

District I
1625 N. French Dr., Hobbs, NM 88240
Phone: (575) 393-6161 Fax: (575) 393-0720
District II
811 S. First St., Artesia, NM 88210
Phone: (575) 748-1283 Fax: (575) 748-9720
District III
1000 Rio Brazos Road, Aztec, NM 87410
Phone: (505) 334-6178 Fax: (505) 334-6170
District IV
1220 S. St. Francis Dr., Santa Fe, NM 87505
Phone: (505) 476-3460 Fax: (505) 476-3462

HOBBS OCD
APR 02 2014
RECEIVED

State of New Mexico
Energy, Minerals & Natural Resources Department
OIL CONSERVATION DIVISION
1220 South St. Francis Dr.
Santa Fe, NM 87505

Form C-102
Revised August 1, 2011
Submit one copy to appropriate
District Office
☐ AMENDED REPORT

WELL LOCATION AND ACREAGE DEDICATION PLAT

¹ API Number 30-025-29094	² Pool Code 19190	³ Pool Name DRINKARD
⁴ Property Code 2682	⁵ Property Name H.T. MATTERN NCT-B	⁶ Well Number 23
⁷ OGRID No. 4323	⁸ Operator Name CHEVRON U.S.A. INC.	⁹ Elevation 3485'

¹⁰ Surface Location

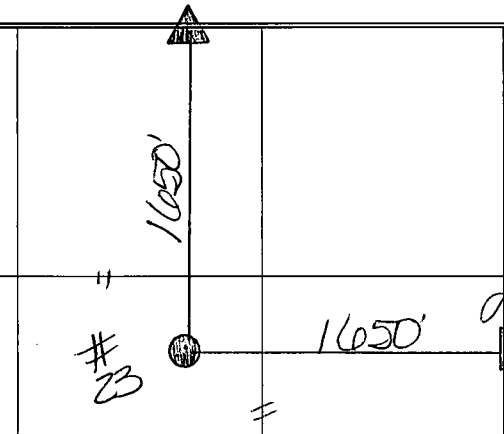
UL or lot no. G	Section 31	Township 21S	Range 37E	Lot Idn	Feet from the 1650	North/South line NORTH	Feet from the 1650	East/West line EAST	County LEA
--------------------	---------------	-----------------	--------------	---------	-----------------------	---------------------------	-----------------------	------------------------	---------------

¹¹ Bottom Hole Location If Different From Surface

UL or lot no.	Section	Township	Range	Lot Idn	Feet from the	North/South line	Feet from the	East/West line	County
---------------	---------	----------	-------	---------	---------------	------------------	---------------	----------------	--------

¹² Dedicated Acres 40	¹³ Joint or Infill	¹⁴ Consolidation Code	¹⁵ Order No.
-------------------------------------	-------------------------------	----------------------------------	-------------------------

No allowable will be assigned to this completion until all interests have been consolidated or a non-standard unit has been approved by the division.

¹⁶		<p>¹⁷ OPERATOR CERTIFICATION</p> <p>I hereby certify that the information contained herein is true and complete to the best of my knowledge and belief, and that this organization either owns a working interest or unleased mineral interest in the land including the proposed bottom hole location or has a right to drill this well at this location pursuant to a contract with an owner of such a mineral or working interest, or to a voluntary pooling agreement or a compulsory pooling order heretofore entered by the division.</p> <p>Signature: <i>Denise Pinkerton</i> Date: 03/31/2014</p> <p>DENISE PINKERTON REGULATORY SPECIALIST Printed Name</p> <p>leakejd@chevron.com E-mail Address</p>
		<p>¹⁸ SURVEYOR CERTIFICATION</p> <p>I hereby certify that the well location shown on this plat was plotted from field notes of actual surveys made by me or under my supervision, and that the same is true and correct to the best of my belief.</p> <p>Date of Survey</p> <p>Signature and Seal of Professional Surveyor:</p> <p>Certificate Number</p>

APR 24 2014

District I
1625 N. French Dr., Hobbs, NM 88240
Phone: (575) 393-6161 Fax: (575) 393-0720
District II
811 S. First St., Artesia, NM 88210
Phone: (575) 748-1283 Fax: (575) 748-9720
District III
1000 Rio Brazos Road, Aztec, NM 87410
Phone: (505) 334-6178 Fax: (505) 334-6170
District IV
1220 S. St. Francis Dr., Santa Fe, NM 87505
Phone: (505) 476-3460 Fax: (505) 476-3462

HOBBS OCD
APR 02 2014
RECEIVED

State of New Mexico
Energy, Minerals & Natural Resources Department
OIL CONSERVATION DIVISION
1220 South St. Francis Dr.
Santa Fe, NM 87505

Form C-102
Revised August 1, 2011
Submit one copy to appropriate
District Office
☐ AMENDED REPORT

WELL LOCATION AND ACREAGE DEDICATION PLAT

¹ API Number 30-025-29094	² Pool Code 06660	³ Pool Name BLINEBRY OIL & GAS
⁴ Property Code	⁵ Property Name H.T. MATTERN NCT-B	⁶ Well Number 23
⁷ OGRID No. 4323	⁸ Operator Name CHEVRON U.S.A. INC.	⁹ Elevation 3485'

¹⁰ Surface Location

UL or lot no.	Section	Township	Range	Lot Idn	Feet from the	North/South line	Feet from the	East/West line	County
G	31	21S	37E		1650	NORTH	1650	EAST	LEA

¹¹ Bottom Hole Location If Different From Surface

UL or lot no.	Section	Township	Range	Lot Idn	Feet from the	North/South line	Feet from the	East/West line	County
---------------	---------	----------	-------	---------	---------------	------------------	---------------	----------------	--------

¹² Dedicated Acres 40	¹³ Joint or Infill	¹⁴ Consolidation Code	¹⁵ Order No.
-------------------------------------	-------------------------------	----------------------------------	-------------------------

No allowable will be assigned to this completion until all interests have been consolidated or a non-standard unit has been approved by the division.

	<p>¹⁷ OPERATOR CERTIFICATION</p> <p><i>I hereby certify that the information contained herein is true and complete to the best of my knowledge and belief, and that this organization either owns a working interest or unleased mineral interest in the land including the proposed bottom hole location or has a right to drill this well at this location pursuant to a contract with an owner of such a mineral or working interest, or to a voluntary pooling agreement or a compulsory pooling order heretofore entered by the division.</i></p> <p>Signature: <u>[Signature]</u> Date: <u>03/31/2014</u></p> <p>Printed Name: <u>DENISE PINKERTON</u> Title: <u>REGULATORY SPECIALIST</u></p> <p>E-mail Address: <u>leakejd@chevron.com</u></p>
	<p>¹⁸ SURVEYOR CERTIFICATION</p> <p><i>I hereby certify that the well location shown on this plat was plotted from field notes of actual surveys made by me or under my supervision, and that the same is true and correct to the best of my belief.</i></p> <p>Date of Survey: _____</p> <p>Signature and Seal of Professional Surveyor: _____</p> <p>Certificate Number: _____</p>

Proposed **Wellbore Diagram**

Location:
1650' FNL & 1650' FEL
Section: 31
Township: 21S
Range: 37E Unit: G
County: Lea State: NM

Elevations:
GL: 3485'
KB:
DF:

Well ID Info:
Chevno: FM2854
API No: 30-025-29094
L5/L6: U415000
Spud Date: 1/23/85
Compl. Date: 2/25/85

Surf. Csg: 11-3/4", 42#, H-40
Set: @ 398' w/275 sx cmt
Size of hole: 14-3/4"
Circ: Yes **TOC:** Surface
TOC By: Circulated 94 sxs

Interm. Csg: 8-5/8", 32# & 24#, K-55
Set: @ 2720' w/750 sx cmt
Size of hole: 11"
Circ: Yes **TOC:** Surface
TOC By: Circulated 134 sxs

TOC @ 2747'

DV Tool @ 4066'

Proposed Blinebry Perfs

5480-84	2 spf
5493-96	2 spf
5503-18	2 spf
5528-36	2 spf
5551-55	2 spf
5578-86	2 spf
5624-33	2 spf
5639-46	2 spf
5660-75	2 spf
5683-88	2 spf
5696-07	2 spf
5807-24	2 spf
5883-92	2 spf
5911-19	2 spf
5931-47	3 spf
5959-65	3 spf
5970-76	3 spf
5991-97	3 spf

Drinkard Oil - Open

6570', 6572', 6574', 6580', 6584',
6587', 6606', 6607', 6620', 6622',
6630', 6634', 6638' w/1 JHPF.

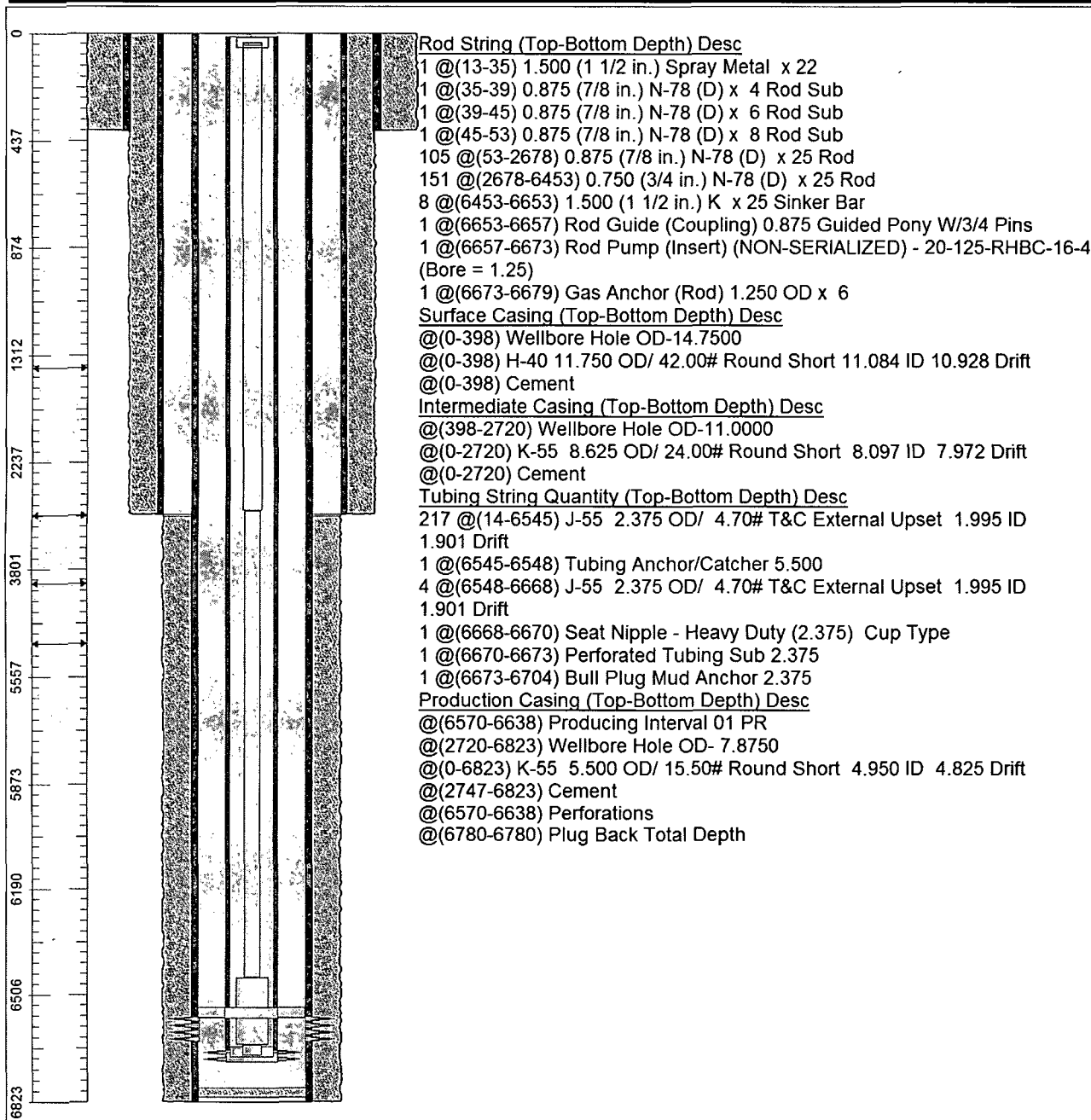
Prod. Csg: 5-1/2", 15.5#, K-55
Set: @ 6823' w/1200 sx cmt
Size of hole: 7-7/8"
Circ: No **TOC:** 2747'
TOC By: Temperature Survey

PBTD: 6780'
TD: 6824'

Updated: 3/19/13

Chevron U.S.A. Inc. Wellbore Diagram : MATB23

Lease: OEU EUNICE FMT		Well No.: MATTERN H T /NCT-B/ 23		Field: DRINKARD	
Location: 1650FNL1650FEL		Sec.: N/A		Blk:	Survey: N/A
County: Lea	St.: New Mexico	Refno: FM2854		API: 3002529094	Cost Center: UCU415000
Section: 31		Township: 021 S			Range: 037 E
Current Status: ACTIVE				Dead Man Anchors Test Date: 02/21/2014	
Directions:					



Ground Elevation (MSL): 3485.00	Spud Date: 01/23/1985	Compl. Date: 02/25/1985
Well Depth Datum: Kelly Bushing	Elevation (MSL): 0.00	Correction Factor: 13.00
Last Updated by: jackssl		Date: 01/05/2009