

Submit 1 Copy To Appropriate District  
Office  
District I - (575) 393-6161  
1625 N. French Dr., Hobbs, NM 88240  
District II - (575) 748-1283  
811 S. First St., Artesia, NM 88210  
District III - (505) 334-6178  
1000 Rio Brazos Rd., Aztec, NM 87410  
District IV - (505) 476-3460  
1220 S. St. Francis Dr., Santa Fe, NM 87505

State of New Mexico  
Energy, Minerals and Natural Resources

Form C-103  
Revised August 1, 2011

OIL CONSERVATION DIVISION  
1220 South St. Francis Dr.  
Santa Fe, NM 87505

HOBBS OCD

APR 11 2014

WELL API NO. 30-025-25720
5. Indicate Type of Lease STATE <input checked="" type="checkbox"/> FEE <input type="checkbox"/>
6. State Oil & Gas Lease No.
7. Lease Name or Unit Agreement Name CENTRAL VACUUM UNIT
8. Well Number 45
9. OGRID Number 4323
10. Pool name or Wildcat VACUUM G/B SAN ANDRES
11. Elevation (Show whether DR, RKB, RT, GR, etc.) 3,977' (GL)

SUNDRY NOTICES AND REPORTS ON WELLS  
(DO NOT USE THIS FORM FOR PROPOSALS TO DRILL OR TO DEEPEN OR PLUG BACK TO A DIFFERENT RESERVOIR. USE "APPLICATION FOR PERMIT" (FORM C-101) FOR SUCH PROPOSALS.)

1. Type of Well: Oil Well ☒ Gas Well ☒ Other INJECTOR

2. Name of Operator  
CHEVRON U.S.A INC.

3. Address of Operator  
15 SMITH ROAD, MIDLAND, TEXAS 79705

4. Well Location  
Unit Letter C : 121 feet from the NORTH line and 2475 feet from the WEST line  
Section 31 Township 17-S Range 35-E NMPM County LEA

12. Check Appropriate Box to Indicate Nature of Notice, Report or Other Data

NOTICE OF INTENTION TO:

PERFORM REMEDIAL WORK ☐ PLUG AND ABANDON ☒  
TEMPORARILY ABANDON ☐ CHANGE PLANS ☐  
PULL OR ALTER CASING ☐ MULTIPLE COMPL ☐  
DOWNHOLE COMMINGLE ☐

OTHER: ☐

SUBSEQUENT REPORT OF:

REMEDIAL WORK ☐ ALTERING CASING ☐  
COMMENCE DRILLING OPNS. ☐ P AND A ☐  
CASING/CEMENT JOB ☐

OTHER: ☐

13. Describe proposed or completed operations. (Clearly state all pertinent details, and give pertinent dates, including estimated date of starting any proposed work). SEE RULE 19.15.7.14 NMAC. For Multiple Completions: Attach wellbore diagram of proposed completion or recompletion.

Chevron USA intends to PA the above well as follows: This well was down for MIT failure and was rigged up on 3/23/14 to run a liner and restore the mechanical integrity of the wellbore. It was discovered that the casing was parted from 595 - 610'. The wellbore is beyond repair and P&A operations are underway. Contacted NMOCD and spoke to Maxey Brown, Verbal Approval was given to proceed as follows: Attached wellbore diagram.

1. TIH with 2-3/8" workstring (bent joint, orange-peeled bottom with 1/4" slits) and wash down to 3900'. Contact engineer and NMOCD if we can't reach 3900'.
2. At 3900', establish circulation and spot 235 sks Class C neat cement, flush lines and TOH to surface. Shut in and allow cement to cure.
3. TIH and tag TOC. Confirm depth with NMOCD.
4. Continue spotting cement to surface.
5. ND wellhead and install dryhole cap.
6. Notify NMOCD and production when finished.
7. RDMO pulling unit and surface equipment.

Spud Date:

Rig Release Date:

I hereby certify that the information above is true and complete to the best of my knowledge and belief.

SIGNATURE Cindy Herrera-Murillo TITLE PERMITTING SPECIALIST DATE 04/11/2014

Type or print name CINDY HERRERA-MURILLO E-mail address: Cherreramurillo@chevron.com PHONE: 575-263-0431

For State Use Only  
APPROVED BY: Maxey Brown TITLE Dist. Supervisor DATE 4/16/2014

Conditions of Approval (if any):

APR 16 2014

Current Wellbore Diagram  
CVU 45

Created: 03/02/06 By: C. A. Irle  
Updated: 08/17/07 By: PTBP  
Updated: 03/24/08 By: Cayce  
Updated: 08/23/12 By: PTBP  
Lease: Central Vacuum Unit  
Field: Vacuum Grayburg-San Andres  
Surf. Loc.: 121' FNL & 2,475' FWL  
Bot. Loc.:  
County: Lea St.: NM  
Status: Active Injection Well

Well #: 45 St. Lse: B-1334  
API: 30-025-25720  
CHEVNO: EP8890  
Unit Ltr.: C Section: 31  
TSHP/Rng: S-17 E-35  
Unit Ltr.: Section:  
TSHP/Rng:  
Directions: Buckeye, NM

Surface Casing

Size: 8 5/8"  
Wt., Grd.: 24#  
Depth: 387  
Sxs Cmt: 425  
Circulate: Yes  
TOC: Surface  
Hole Size: 12 1/4"

Prior casing leak 582-614 (2010)

Prior casing leak 595-628 (2012)

**Parted casing from 595-610'**

KB: 3,987  
DF: 3986'  
GL: 3,977  
Ini. Spud: 02/09/78  
Ini. Comp.: 03/03/78

History

3/3/78 Ini Comp: Perf 2 jspf 4422, 28, 40, 52, 60, 74, 84, 4506, 17, 95, 4623, 31, 41, 50, 61, 67, 74, 84, 95, 4708, 18, 26, RBD 4756, pkr 4603, acid 3600 gls 15% NE 400# RS, RBP 4603, pkr 4354, acid 3000 gls 15% NE 300# RS, pkr 4377.  
10/20/81 Replace Tubing  
9/1/94 Acid: CO 4783, acid 3000 gls 15% HCl, CO 4783, pkr 4346.  
11/98 Pressure increase to 2000 psig water, 1850 CO2.  
4/9/05 CTCQ: Tbg lining peeled so stop.  
8/23/05 MIT Repair: Replace 8 5/8" wellhead, CO 4783, acid perfs from 4422-4726 w/6000 gals acid & 4000# RS in 3 stages. pkr @ 4335'. PU 80 jts 2-3/8" IPC tbg to 2532'.  
12/7/06 WAG conversion. Pull Vertilog and CBL. Log from 4335-surface. Run new tubing.  
9/12/07: Tag TD @ 4781'  
12/6/07-1/4/08 Add perfs & acidize: Perfs 4390-4602. Pmp 6000 gals 15% acid fr 4390-4766. TIH to tag bad csg @ 4756. Mill thru @ 4756. Fell thru to 4783. TIH w/2 3/8" tbg. EOT @ 4328. Set pkr @ 4328.  
8/31/10-10/30/10 Set plugs to replace WH. Tag @ 4,674'. CO to 4,783'. Set packer at 4,310', frac well with 75,000# sand w/ 2,300 bbls water. Avg treating pressure 5,511#, Max pressure 8,525#, Avg rate 17.9 BPM. CO to 4,783' - lost BHA in hole. Isolate csg leak from 582-614', spot cmt from 710-340'. DO cmt, pressure test, not holding. Re-squeeze w/ 25 sx. DO cmt, test to 320# for 15 min, no loss. Set packer @ 4,321'. MIT Test.  
7/13/12-8/13/12 Isolate csg leak from 595-628. squeeze w/ 26 sx. DO cmt, pressure test, did not hold. Squeeze w/ 7 bbls cmt. DO cmt, pressure test, held. MIT Test.

2-3/8" Fibertlined Injection Tubing (136 jts.)

**Redbeds on top of fish  
TOF @ 3,990'**

Mule Shoe & 1 jt tubing

Sand on top of packer

Production Casing

Size: 4 1/2"  
Wt., Grd.: 10.5#  
Depth: 4,800'  
Sxs Cmt: 2,200  
Circulate: Yes; 300 sks  
TOC: surface  
Hole Size: 7 7/8"

PBTD: 4,777  
TD: 4,800

Arrowset Inj. Pkr. w/ On-Off Tool (1.43" PN) @ 4,312'

Bad CSG from 4,345 -60 & 4,615.  
Perfs: 4390-4766

Fish in the hole: 2-3/8" Tubing f 4,777-85'  
3-1/8" XO f 4,785-86'  
3-7/8" Cone Buster Mill f 4,786-88'

Wellbore Diagram  
CVU 45

Created: 03/02/06 By: C. A. Irle  
Updated: 08/17/07 By: PTBP  
Updated: 03/24/08 By: Cayce  
Updated: 08/23/12 By: PTBP  
Lease: Central Vacuum Unit  
Field: Vacuum Grayburg-San Andres  
Surf. Loc.: 121' FNL & 2,475' FWL  
Bot. Loc.:  
County: Lea St.: NM  
Status: Active Injection Well

Well #: 45 St. Lse: B-1334  
API: 30-025-25720  
CHEVNO: EP8890  
Unit Ltr.: C Section: 31  
TSHP/Rng: S-17 E-35  
Unit Ltr.: Section:  
TSHP/Rng:  
Directions: Buckeye, NM

Surface Casing

Size: 8 5/8"  
Wt., Grd.: 24#  
Depth: 387  
Sxs Cmt: 425  
Circulate: Yes  
TOC: Surface  
Hole Size: 12 1/4"

Prior casing leak 582-614 (2010)  
Prior casing leak 595-628 (2012)

**Parted casing from 595-610'**

KB: 3,987  
DF: 3986'  
GL: 3,977  
Ini. Spud: 02/09/78  
Ini. Comp.: 03/03/78

History

3/3/78 Ini Comp: Perf 2 jsf 4422, 28, 40, 52, 60, 74, 84, 4506, 17, 95, 4623, 31, 41, 50, 61, 67, 74, 84, 95, 4708, 18, 26, RBD 4756, pkr 4603, acid 3600 gls 15% NE 400# RS, RBP 4603, pkr 4354, acid 3000 gls 15% NE 300# RS, pkr 4377.  
10/20/81 Replace Tubing  
9/1/94 Acid: CO 4783, acid 3000 gls 15% HCl, CO 4783, pkr 4346.  
11/98 Pressure increase to 2000 psig water, 1850 CO2.  
4/9/05 CTCQ: Tbg lining peeled so stop.  
8/23/05 MIT Repair: Replace 8 5/8" wellhead, CO 4783, acid perfs from 4422-4726 w/6000 gals acid & 4000# RS in 3 stages, pkr @ 4335'. PU 80 jts 2-3/8" IPC tbg to 2532'.  
12/7/06 WAG conversion Pull Vertilog and CBL. Log from 4335-surface. Run new tubing.  
9/12/07 Tag TD @ 4781'  
12/6/07-1/4/08 Add perfs & acidize: Perfs 4390-4602. Pmp 6000 gals 15% acid fr 4390-4766. TIH to tag bad csg @ 4756. Mill thru @ 4756. Fell thru to 4783. TIH w/2 3/8" tbg. EOT @ 4328. Set pkr @ 4328.  
8/31/10-10/30/10 Set plugs to replace WH. Tag @ 4,674'. CO to 4,783'. Set packer at 4,310', frac well with 75,000# sand w/ 2,300 bbls water. Avg treating pressure 5,511#. Max pressure 8,525#. Avg rate 17.9 BPM. CO to 4,783' - lost BHA in hole. Isolate csg leak from 582-614', spot cmt from 710-340'. DO cmt, pressure test, not holding. Re-squeeze w/ 25 sx. DO cmt, test to 320# for 15 min, no loss. Set packer @ 4,321'. MIT Test.  
7/13/12-8/13/12 Isolate csg leak from 595-628. squeeze w/ 26 sx. DO cmt, pressure test, did not hold. Squeeze w/ 7 bbls cmt. DO

2-3/8" Fiberlined Injection Tubing (136 jts.)

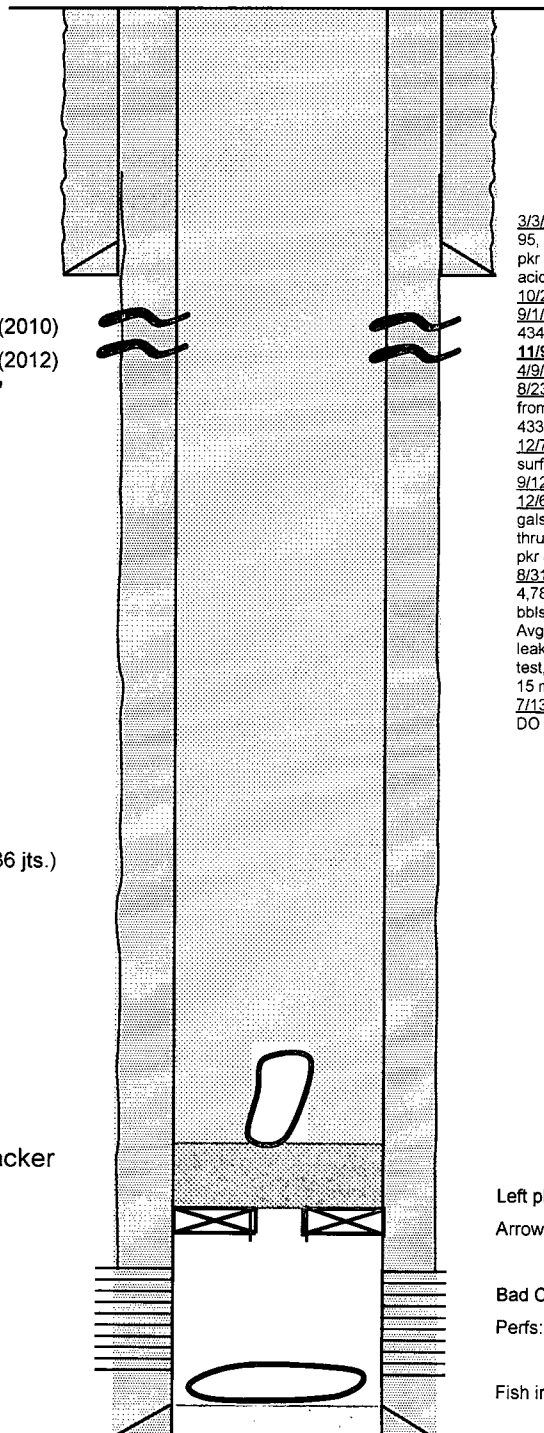
Redbeds on top of fish  
TOF @ 3,990'

Mule Shoe & 1 jt tubing

Sand on top of packer

Production Casing

Size: 4 1/2"  
Wt., Grd.: 10.5#  
Depth: 4,800'  
Sxs Cmt: 2,200  
Circulate: Yes; 300 sks  
TOC: surface  
Hole Size: 7 7/8"



Left plug in the packer

Arrowset Inj. Pkr. w/ On-Off Tool (1.43" PN) @ 4,312'

Bad CSG from 4,345 -60 & 4,615-

Perfs: 4390-4766

Fish in the hole: 2-3/8" Tubing f 4,777-85'

3-1/8" XO f 4,785-86'

3-7/8" Cone Buster Mill f 4,786-88'

PBTD: 4,777  
TD: 4,800