

District J
1625 N. French Dr., Hobbs, NM 88240
Phone: (505) 393-6161 Fax: (505) 393-9720

District II
311 S. First St., Artesia, NM 88210
Phone: (505) 748-1283 Fax: (505) 748-9720

District III
1000 Rio Brazos Road, Aztec, NM 87410
Phone: (505) 334-6178 Fax: (505) 334-6178

District IV
1220 S. St. Francis Dr., Santa Fe, NM 87505
Phone: (505) 476-3460 Fax: (505) 476-3462

-0720
HOBBS OGD

State of New Mexico
Oil, Minerals & Natural Resources Department
OIL CONSERVATION DIVISION
1220 South St. Francis Dr.
Santa Fe, NM 87505

Form C-102
Revised August 1, 2011
Submit one copy to appropriate
District Office

☐ AMENDED REPORT

MAY 05 2014

RECEIVED

WELL LOCATION AND ACREAGE DEDICATION PLAT

¹ API Number 30-025-41829	² Pool Code 96715	³ Pool Name WC-025 6-08.5253209L; BS
⁴ Property Code 313193	⁵ Property Name LIPPIZZAN 4 FED	⁶ Well Number 1H
⁷ OGRID No. 6137	⁸ Operator Name DEVON ENERGY PRODUCTION COMPANY, L.P.	⁹ Elevation 3475.5

¹⁰ Surface Location

UL or lot no.	Section	Township	Range	Lot Idn	Feet from the	North/South line	Feet from the	East/West line	County
4	4	25 S	32 E		200	NORTH	660	WEST	LEA

" Bottom Hole Location If Different From Surface

UL or lot no.	Section	Township	Range	Lot Idn	Feet from the	North/South line	Feet from the	East/West line	County
M	4	25 S	32 E		330	SOUTH	660	WEST	LEA

¹² Dedicated Acres 160.26	¹³ Joint or Infill	¹⁴ Consolidation Code	¹⁵ Order No. Oil 5-1-2014 15220
---	-------------------------------	----------------------------------	--

ADD
5-1-14

No allowable will be assigned to this completion until all interests have been consolidated or a non-standard unit has been approved by the division.

Seet ^{ing} yard

17 OPERATOR CERTIFICATION

I hereby certify that the information contained herein is true and complete to the best of my knowledge and belief, and that this organization either owns a working interest or unleased mineral interest in the land including the proposed bottom hole location or has a right to drill this well at this location pursuant to a contract with an owner of such a mineral or working interest, or to a voluntary pooling agreement or a compulsory pooling order heretofore entered by an division.

Trina C. Couch, Regulatory Associate

Printed Name
trina.couch@dyn.com

E-mail Address

¹⁸SURVEYOR CERTIFICATION

I hereby certify that the well location shown on this plat was plotted from field notes of actual surveys made by me, or under my supervision, and that the same is true and correct to the best of my belief.

OCTOBER 29, 2013

Date of Survey _____

Signature and Seal of Professional Surveyor:

Signature and Seal of Professional Surveyor:

Certificate Number: EILMON F. JARAMILLO, PLS 12797

SURVEY NO. 2383

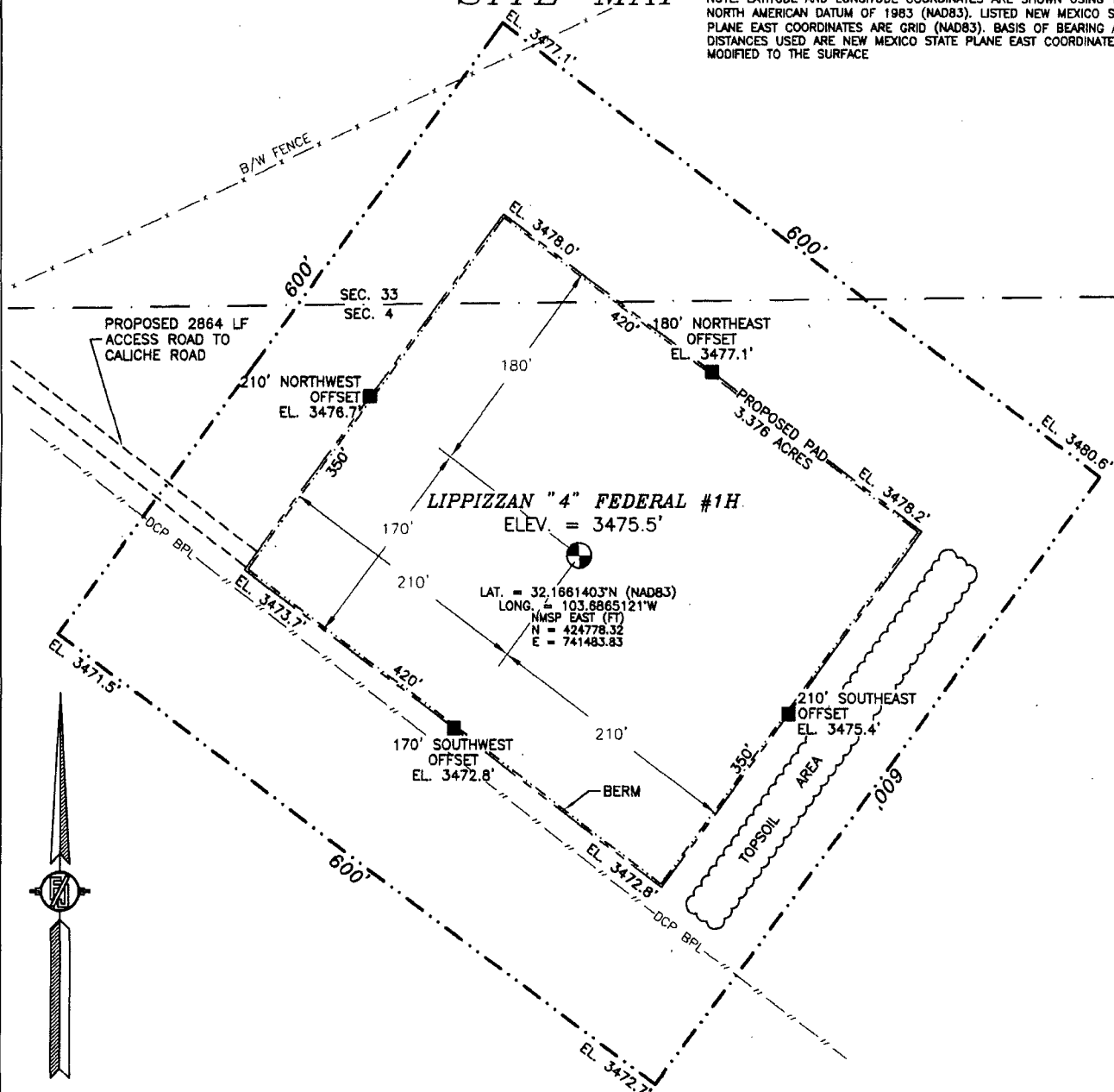
MAY 13 2014

PM

SECTION 4, TOWNSHIP 25 SOUTH, RANGE 32 EAST, N.M.P.M.
LEA COUNTY, STATE OF NEW MEXICO

SITE MAP

NOTE: LATITUDE AND LONGITUDE COORDINATES ARE SHOWN USING THE NORTH AMERICAN DATUM OF 1983 (NAD83). LISTED NEW MEXICO STATE PLANE EAST COORDINATES ARE GRID (NAD83). BASIS OF BEARING AND DISTANCES USED ARE NEW MEXICO STATE PLANE EAST COORDINATES MODIFIED TO THE SURFACE



DEVON ENERGY PRODUCTION COMPANY, L.P.
LIPPIZZAN "4" FEDERAL #1H
LOCATED 200 FT. FROM THE NORTH LINE
AND 660 FT. FROM THE WEST LINE OF
SECTION 4, TOWNSHIP 25 SOUTH,
RANGE 32 EAST, N.M.P.M.
LEA COUNTY, STATE OF NEW MEXICO

OCTOBER 29, 2013

SURVEY NO. 2383

MADRON SURVEYING, INC. 301 SOUTH CANAL CARLSBAD, NEW MEXICO
(575) 234-3341

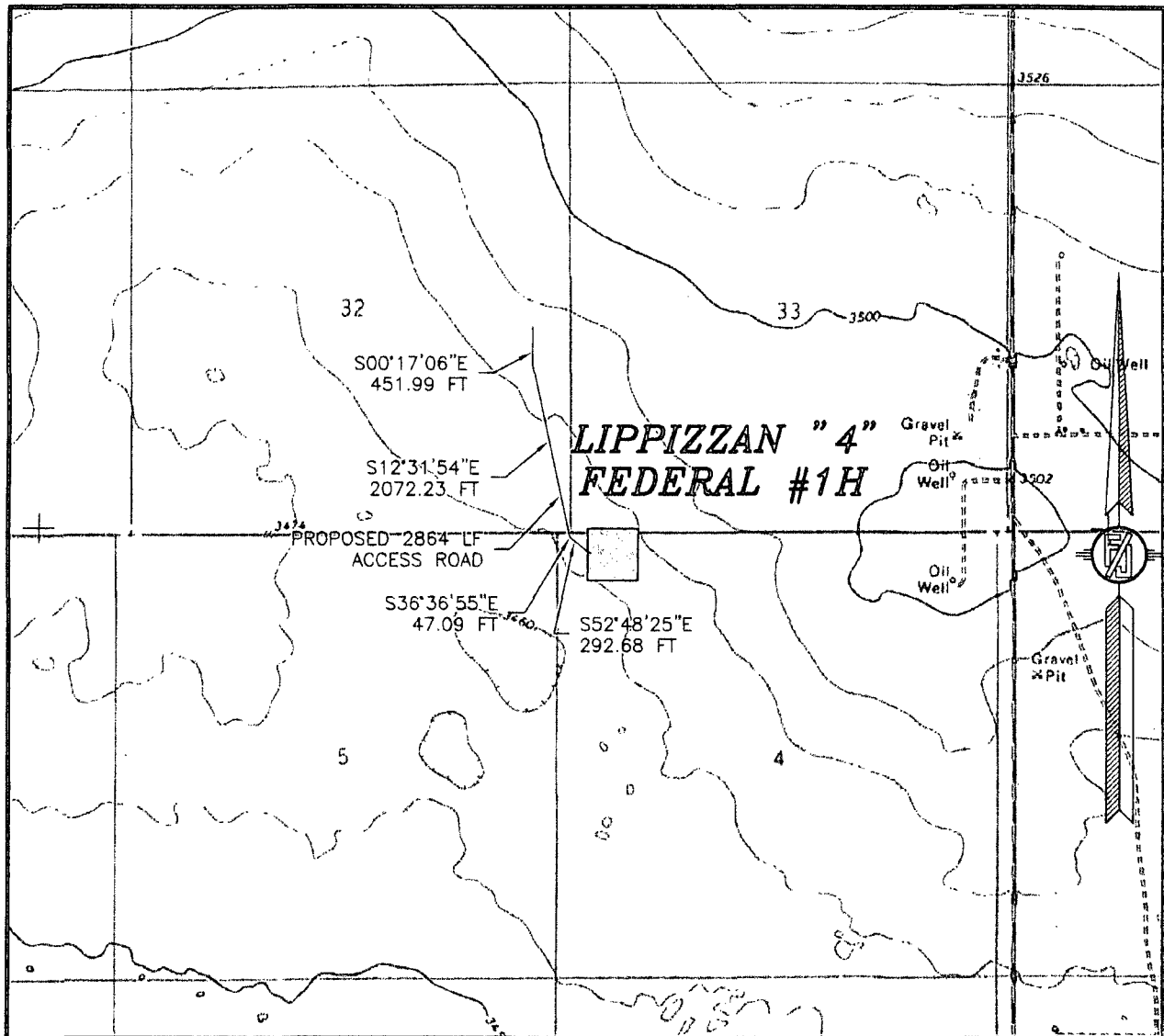
0 12 60 120 240

SCALE 1" = 120'

DIRECTIONS TO LOCATION

FROM STATE HIGHWAY 128 AND PAVED CR 1 (ORLA ROAD) GO SOUTH ON CR 1 2.4 MILES, TURN RIGHT ON CALICHE ROAD AND GO WEST 1.0 MILES, TURN LEFT AND GO SOUTH 0.55 MILES WHERE ROAD TURNS RIGHT, TURN RIGHT AND GO 499', TURN LEFT AND FOLLOW PROPOSED ROAD SURVEY FLAGS SOUTH 452', THEN SOUTHEAST FOR 2412' TO THE SOUTHWEST CORNER OF PROPOSED PAD FOR THIS LOCATION.

SECTION 4, TOWNSHIP 25 SOUTH, RANGE 32 EAST, N.M.P.M.
LEA COUNTY, STATE OF NEW MEXICO
LOCATION VERIFICATION MAP



USGS QUAD MAP:
PADUCA BREAKS NW

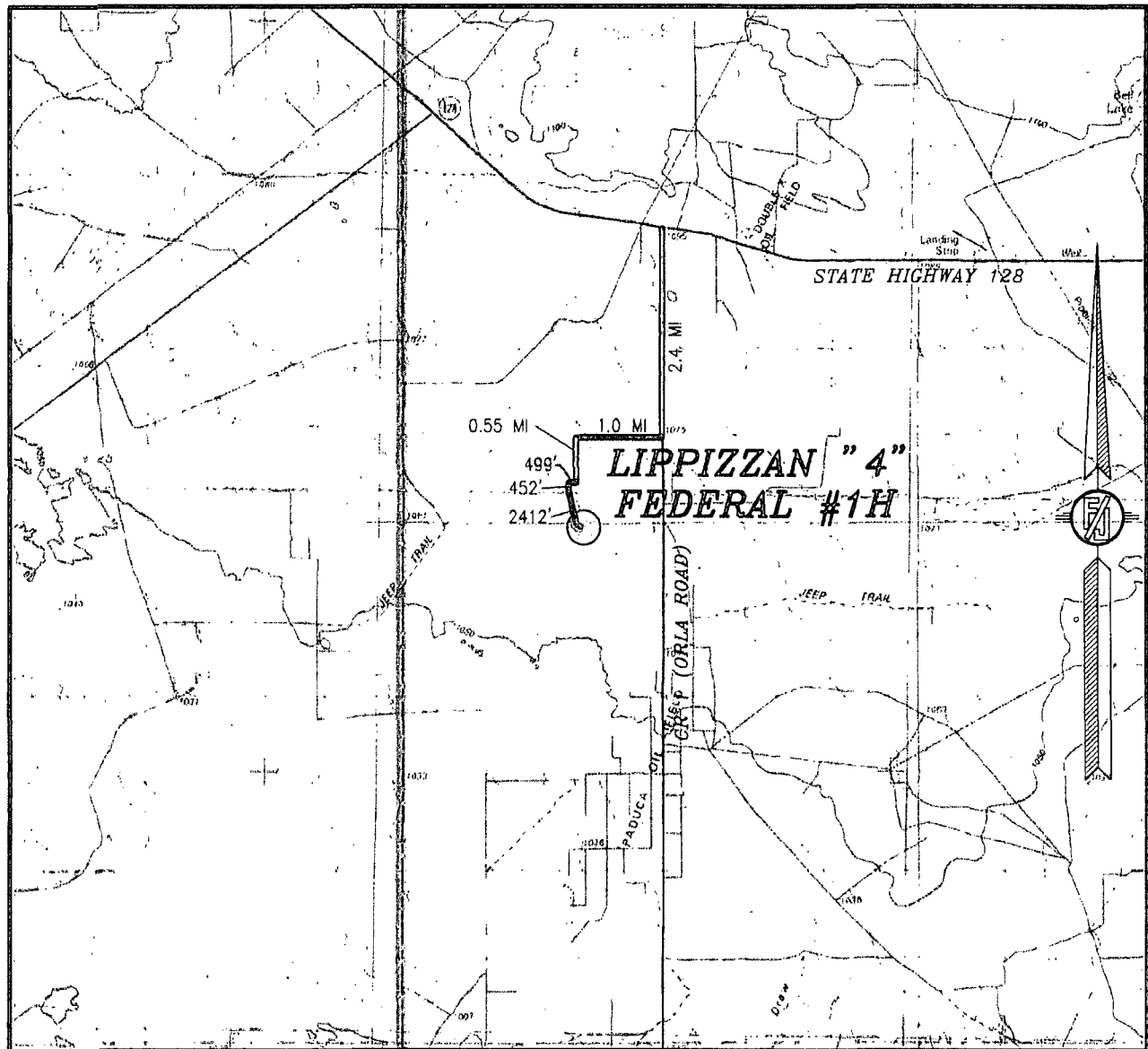
NOT TO SCALE

DEVON ENERGY PRODUCTION COMPANY, L.P.
LIPPIZZAN "4" FEDERAL #1H
LOCATED 200 FT. FROM THE NORTH LINE
AND 660 FT. FROM THE WEST LINE OF
SECTION 4, TOWNSHIP 25 SOUTH,
RANGE 32 EAST, N.M.P.M.
LEA COUNTY, STATE OF NEW MEXICO

OCTOBER 29, 2013

MADRON SURVEYING, INC. 301 SOUTH CANAL (575) 234-3341 SURVEY NO. 2383 CARLSBAD, NEW MEXICO

SECTION 4, TOWNSHIP 25 SOUTH, RANGE 32 EAST, N.M.P.M.
LEA COUNTY, STATE OF NEW MEXICO
VICINITY MAP



NOT TO SCALE

DEVON ENERGY PRODUCTION COMPANY, L.P.

LIPPIZZAN "4" FEDERAL #1H

LOCATED 200 FT. FROM THE NORTH LINE
AND 660 FT. FROM THE WEST LINE OF
SECTION 4, TOWNSHIP 25 SOUTH,
RANGE 32 EAST, N.M.P.M.
LEA COUNTY, STATE OF NEW MEXICO

OCTOBER 29, 2013

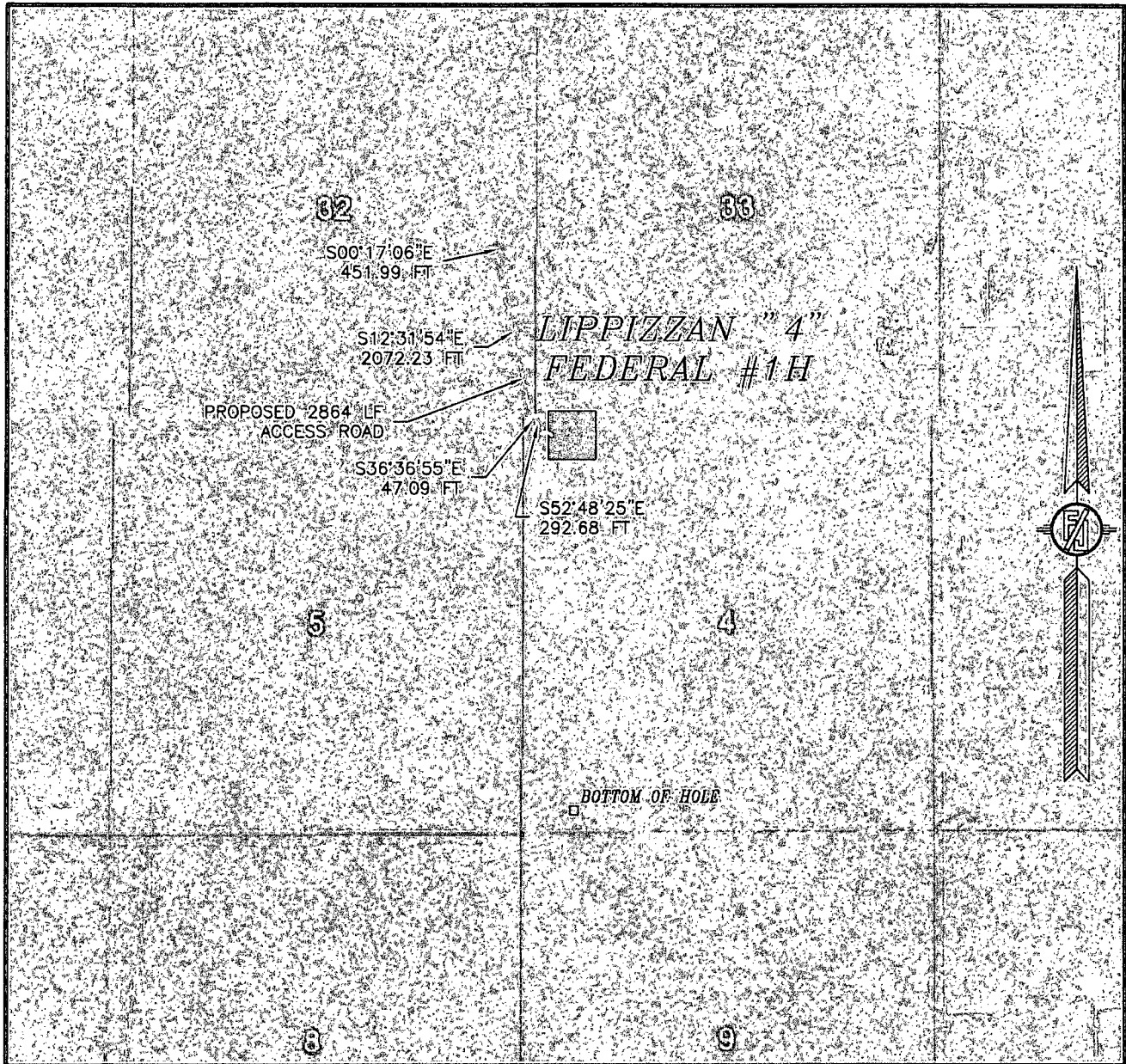
DIRECTIONS TO LOCATION

FROM STATE HIGHWAY 128 AND PAVED CR 1 (ORLA ROAD) GO SOUTH ON CR 1 2.4 MILES, TURN RIGHT ON CALICHE ROAD AND GO WEST 1.0 MILES, TURN LEFT AND GO SOUTH 0.55 MILES WHERE ROAD TURNS RIGHT, TURN RIGHT AND GO 499', TURN LEFT AND FOLLOW PROPOSED ROAD SURVEY FLAGS SOUTH 452', THEN SOUTHEAST FOR 2412' TO THE SOUTHWEST CORNER OF PROPOSED PAD FOR THIS LOCATION.

MADRON SURVEYING, INC. 301 SOUTH CANAL
(575) 234-3341

SURVEY NO. 2383
CARLSBAD, NEW MEXICO

SECTION 4, TOWNSHIP 25 SOUTH, RANGE 32 EAST, N.M.P.M.
LEA COUNTY, STATE OF NEW MEXICO
AERIAL PHOTO



NOT TO SCALE
AERIAL PHOTO:
GOOGLE EARTH
MARCH 2012

DEVON ENERGY PRODUCTION COMPANY, L.P.

LIPPIZZAN "4" FEDERAL #1H

LOCATED 200 FT. FROM THE NORTH LINE
AND 660 FT. FROM THE WEST LINE OF
SECTION 4, TOWNSHIP 25 SOUTH,
RANGE 32 EAST, N.M.P.M.
LEA COUNTY, STATE OF NEW MEXICO

OCTOBER 29, 2013

SURVEY NO. 2383

MADRON SURVEYING, INC. 301 SOUTH CANAL CARLSBAD, NEW MEXICO
(575) 234-3341

