

State of New Mexico

MAY 09 2014

## DISTRICT I

1025 N. FRENCH DR., HOBBS, NM 88240

Energy, Minerals and Natural Resources Department

Form C-102

## DISTRICT II

1301 W. GRAND AVENUE, ARTESIA, NM 88210

## OIL CONSERVATION DIVISION

1220 SOUTH ST. FRANCIS DR.

Santa Fe, New Mexico 87505

RECEIVED

Revised October 12, 2005  
Submit to Appropriate District OfficeState Lease - 4 Copies  
Fee Lease - 3 Copies

## DISTRICT III

1000 Rio Brazos Rd., Aztec, NM 87410

## DISTRICT IV

1220 S. ST. FRANCIS DR., SANTA FE, NM 87505

## WELL LOCATION AND ACREAGE DEDICATION PLAT

☐ AMENDED REPORT

API Number <b>30-025-41837</b>	Pool Code <b>50350</b>	Pool Name <b>Penrose Kelly Grayburg</b>
Property Code <b>2634</b>	Property Name <b>C.L. HARDY</b>	Well Number <b>9</b>
OGRID No. <b>4323</b>	Operator Name <b>CHEVRON USA INC.</b>	Elevation <b>3494'</b>

## Surface Location

UL or lot No.	Section	Township	Range	Lot Idn	Feet from the	North/South line	Feet from the	East/West line	County
K	20	21-S	37-E		1730	SOUTH	2310	WEST	LEA

## Bottom Hole Location If Different From Surface

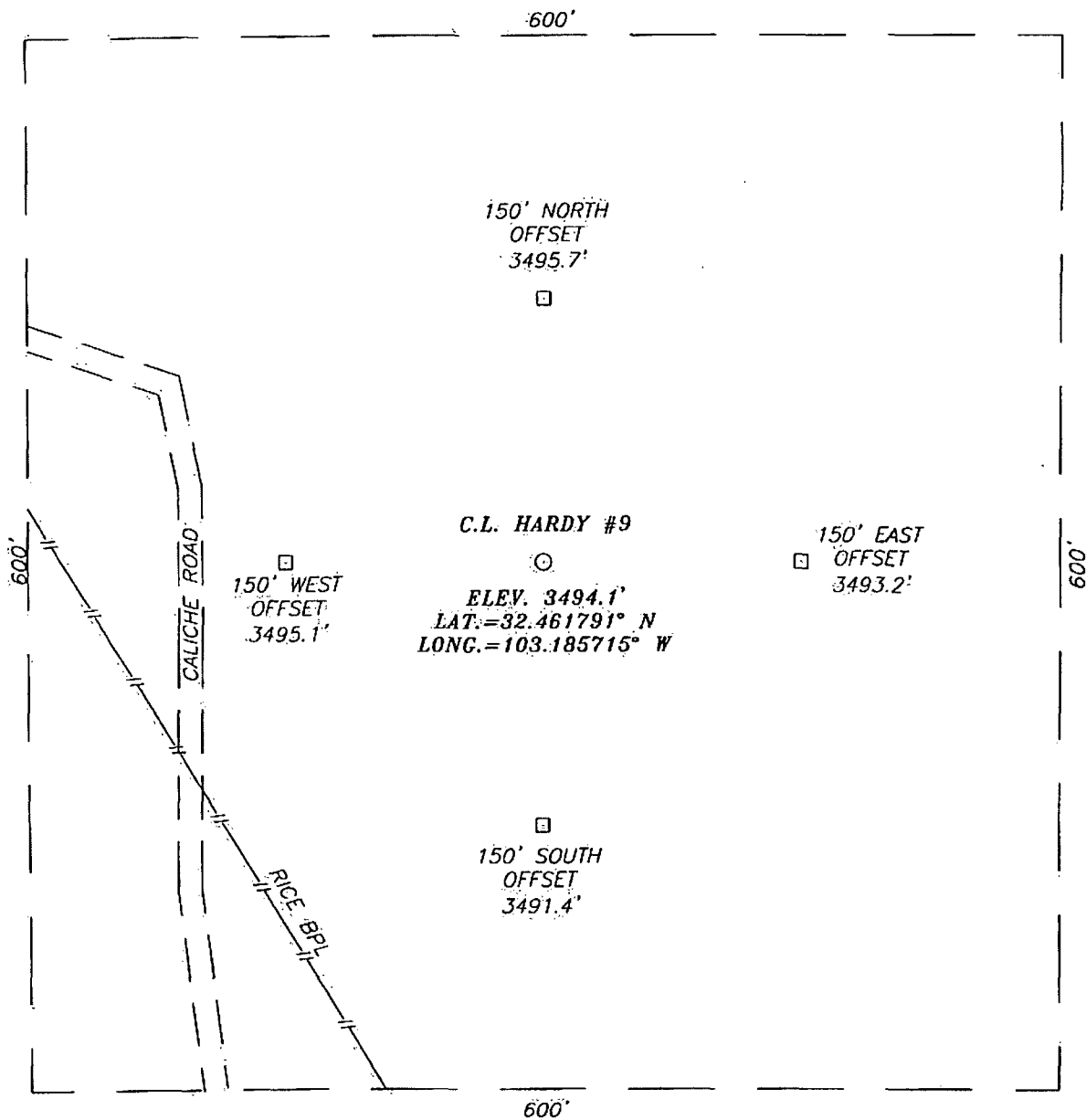
UL or lot No.	Section	Township	Range	Lot Idn	Feet from the	North/South line	Feet from the	East/West line	County
Dedicated Acres <b>40</b>	Joint or Infill	Consolidation Code	Order No.						

NO ALLOWABLE WILL BE ASSIGNED TO THIS COMPLETION UNTIL ALL INTERESTS HAVE BEEN CONSOLIDATED  
OR A NON-STANDARD UNIT HAS BEEN APPROVED BY THE DIVISION

<p>GEODETIC COORDINATES NAD 27 NME</p> <p>Y=533616.1 N X=853971.2 E</p> <p>LAT.=32.461791° N LONG.=103.185715° W</p>	<p><b>OPERATOR CERTIFICATION</b></p> <p>I hereby certify that the information herein is true and complete to the best of my knowledge and belief, and that this organization either owns a working interest or unleased mineral interest in the land including the proposed bottom hole location or has a right to drill this well at this location pursuant to a contract with an owner of such mineral or working interest, or to a voluntary pooling agreement or a compulsory pooling order heretofore entered by the division.</p> <p><i>Ronald J. Eidson</i> 05/08/14 Signature Date <b>RONALD J. EIDSON</b> Printed Name</p>
	<p><b>SURVEYOR CERTIFICATION</b></p> <p>I hereby certify that the well location shown on this plat was plotted from field notes of actual surveys made by me or under my supervision, and that the same is true and correct to the best of my belief.</p> <p><i>Ronald J. Eidson</i> Signature &amp; Seal of Professional Surveyor Date Surveyed 5/30/08 Professional Surveyor</p>
	<p>Certificate No. <b>RONALD EIDSON 3239</b></p>

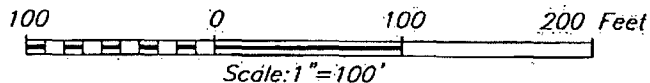
MAY 14 1

SECTION 29, TOWNSHIP 21 SOUTH, RANGE 37 EAST, N.M.P.M.,  
LEA COUNTY, NEW MEXICO



DIRECTIONS TO LOCATION

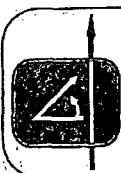
FROM INTERSECTION ST. HWY. #8 AND CO. RD. #E33 (TURNER), GO NORTH ON CO. RD. #E33 APPROX. 1.15 MILES. TURN LEFT AND GO WEST APPROX. 0.64 MILES. TURN RIGHT AND NORTH APPROX. 0.2 MILES. THIS LOCATION IS APPROX. 210 FEET TO THE EAST.



CHEVRON USA INC.

C.L. HARDY #9 WELL  
LOCATED 1730 FEET FROM THE SOUTH LINE  
AND 2310 FEET FROM THE WEST LINE OF SECTION 20,  
TOWNSHIP 21 SOUTH, RANGE 37 EAST, N.M.P.M.,  
LEA COUNTY, NEW MEXICO.

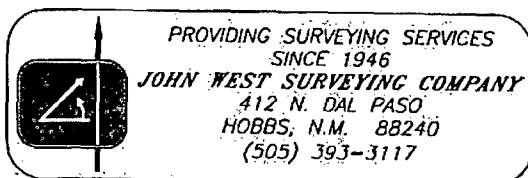
Survey Date: 7/21/08	Sheet 1 of 1 Sheets
W.O. Number: 08.11.1150	Dr By: LA
Date: 7/29/08	08111150
	Scale: 1"=100'



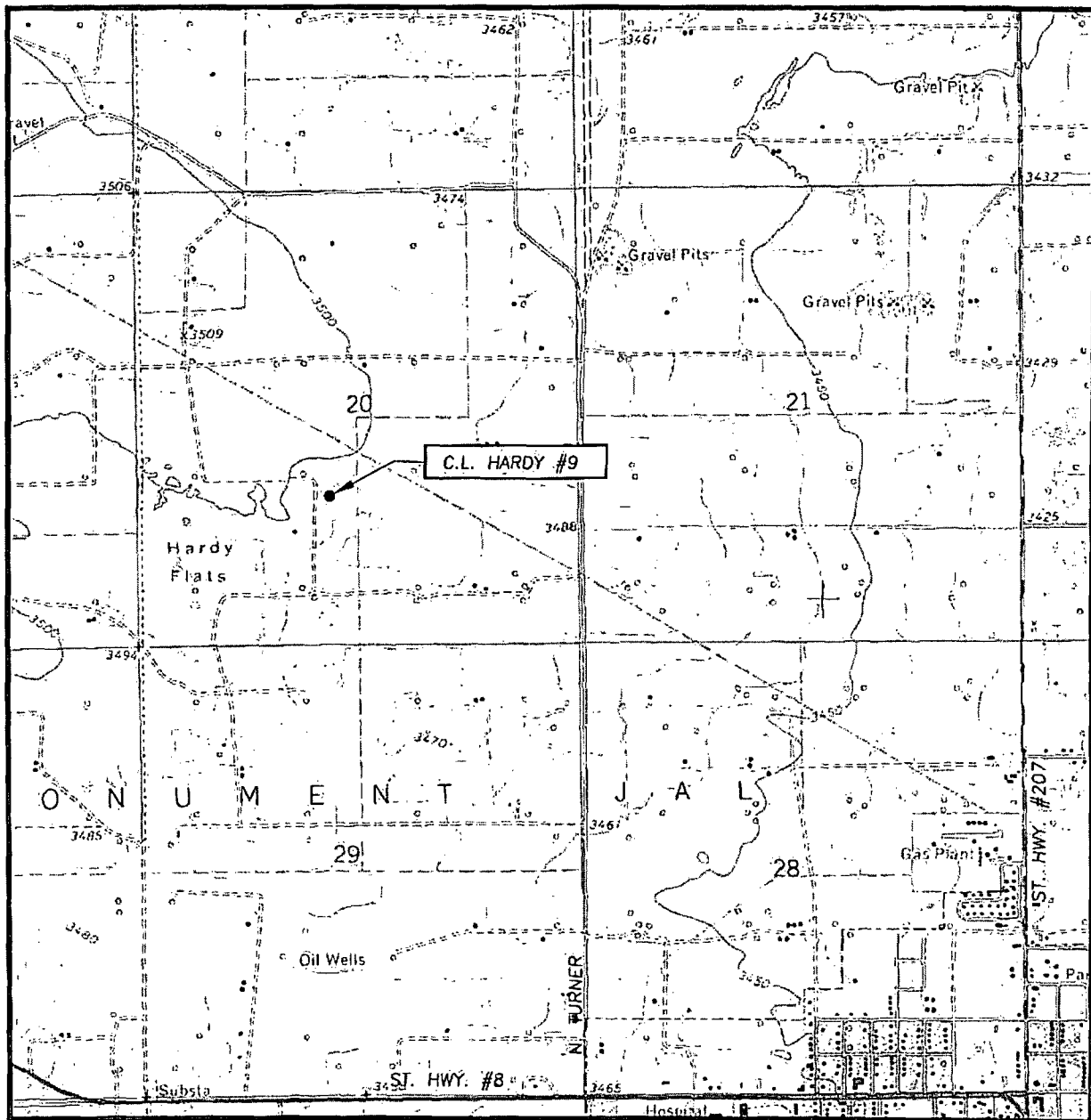
PROVIDING SURVEYING SERVICES  
SINCE 1946  
JOHN WEST SURVEYING COMPANY  
412 N. DAL PASO  
HOBBS, N.M. 88240  
(505) 393-3117

[illegible]

SEC. 20 TWP. 21-S RGE. 37-E  
SURVEY \_\_\_\_\_ N.M.P.M. \_\_\_\_\_  
COUNTY LEA STATE NEW MEXICO  
DESCRIPTION 1730' FSL & 2310' FWL  
ELEVATION 3494  
OPERATOR CHEVRON U.S.A. INC.  
LEASE C.L. HARDY



# LOCATION VERIFICATION MAP



SCALE: 1" = 2000'

CONTOUR INTERVAL:  
EUNICE, N.M. - 10'

SEC. 20 TWP. 21-S RGE. 37-E

SURVEY N.M.P.M.

COUNTY LEA STATE NEW MEXICO

DESCRIPTION 1730' FSL & 2310' FWL

ELEVATION 3494'

OPERATOR CHEVRON USA INC.

LEASE C.L. HARDY

U.S.G.S. TOPOGRAPHIC MAP  
EUNICE, N.M.

