

District I
1625 N. French Dr., Hobbs, NM 88240
Phone: (575) 393-6161 Fax: (575) 393-6100
District II
811 S. First St., Artesia, NM 88210
Phone: (575) 748-1283 Fax: (575) 748-9720
District III
1000 Rio Brazos Road, Aztec, NM 87410
Phone: (505) 334-6178 Fax: (505) 334-6170
District IV
1220 S. St. Francis Dr., Santa Fe, NM 87505
Phone: (505) 476-3460 Fax: (505) 476-3462

HOBBS OCD

MAY 19 2014

RECEIVED

State of New Mexico
Energy, Minerals & Natural Resources Department
OIL CONSERVATION DIVISION
1220 South St. Francis Dr.
Santa Fe, NM 87505

Form C-102
Revised August 1, 2011
Submit one copy to appropriate
District Office

☐ AMENDED REPORT

WELL LOCATION AND ACREAGE DEDICATION PLAT

¹ API Number 30-025-41853		² Pool Code 97922	³ Prod No. WC-025 G-06 52234214; B5
⁴ Property Code 30863	⁵ Property Name GAUCHO UNIT		⁶ Well Number 16H
⁷ OGRID No. 6137	⁸ Operator Name DEVON ENERGY PRODUCTION COMPANY, L.P.		⁹ Elevation 3446.9

¹⁰ Surface Location

UL or lot no.	Section	Township	Range	Lot Idn	Feet from the	North/South line	Feet from the	East/West line	County
P	19	22 S	34 E		200	SOUTH	670	EAST	LEA

¹¹ Bottom Hole Location If Different From Surface

UL or lot no.	Section	Township	Range	Lot Idn	Feet from the	North/South line	Feet from the	East/West line	County
A	19	22 S	34 E		330	NORTH	660	EAST	LEA

¹² Dedicated Acres 160	¹³ Joint or Infill	¹⁴ Consolidation Code	¹⁵ Order No.
---	-------------------------------	----------------------------------	-------------------------

No allowable will be assigned to this completion until all interests have been consolidated or a non-standard unit has been approved by the division.

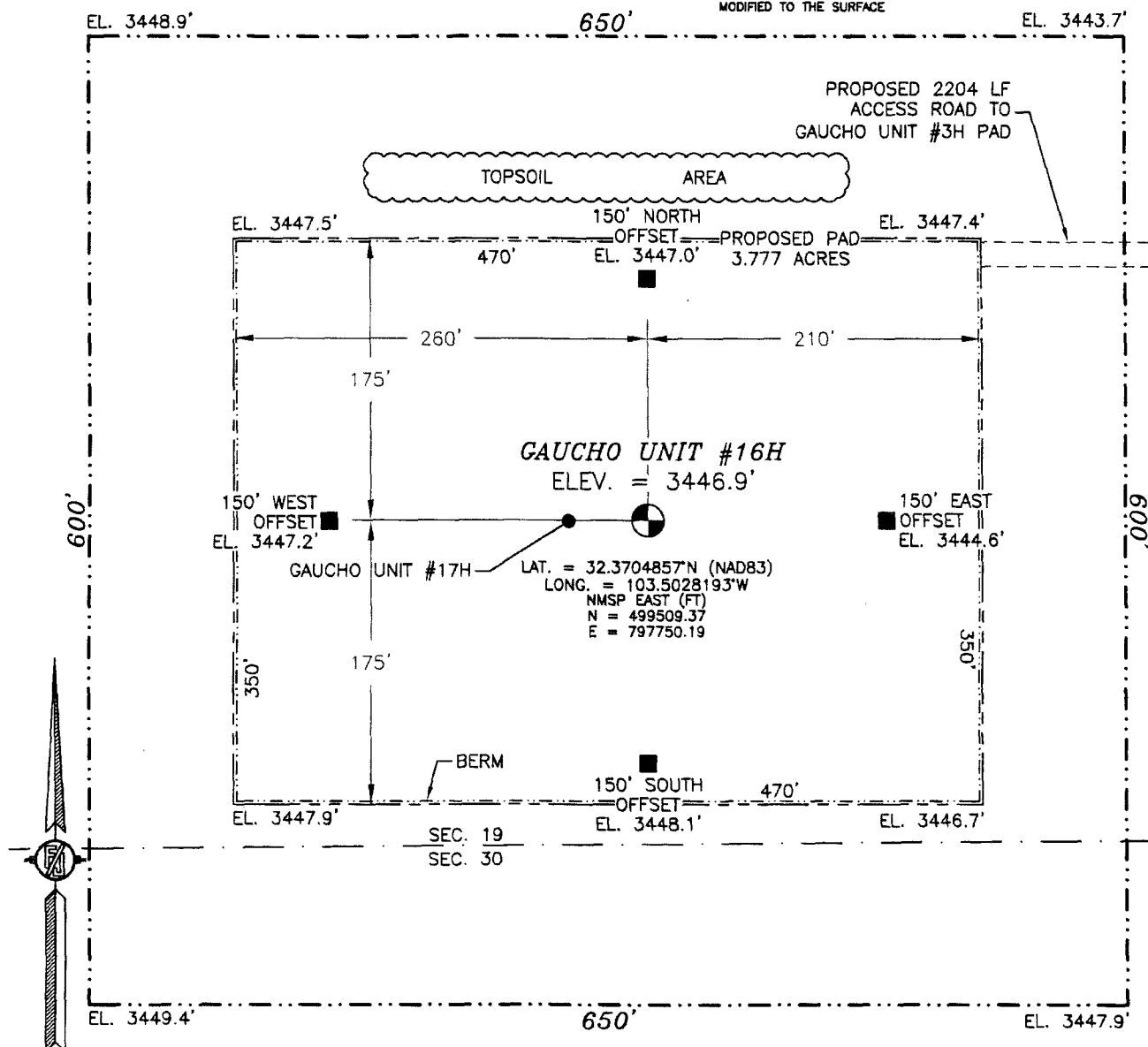
<p>N89°24'38"E 2619.32 FT</p> <p>NW CORNER SEC. 19 LAT. = 32.3844151°N LONG. = 103.5175887°W</p> <p>NMSP EAST (FT) N = 504541.86 E = 793151.52</p> <p>LOT 1</p> <p>LOT 2</p> <p>NOTE: LATITUDE AND LONGITUDE COORDINATES ARE SHOWN USING THE NORTH AMERICAN DATUM OF 1983 (NAD83). LISTED NEW MEXICO STATE PLANE EAST COORDINATES ARE GRID (NAD83). BASIS OF BEARING AND DISTANCES USED ARE NEW MEXICO STATE PLANE EAST COORDINATES MODIFIED TO THE SURFACE.</p> <p>LOT 3</p> <p>SW CORNER SEC. 19 LAT. = 32.3699312°N LONG. = 103.5175204°W</p> <p>NMSP EAST (FT) N = 499272.72 E = 793212.80</p> <p>589°32'14"W 2604.85 FT</p>		<p>N89°24'38"E 2619.32 FT</p> <p>NE CORNER SEC. 19 LAT. = 32.3844523°N LONG. = 103.5006223°W</p> <p>NMSP EAST (FT) N = 504595.75 E = 798388.98</p> <p>660'</p> <p>330'</p> <p>BOTTOM OF HOLE</p> <p>BOTTOM OF HOLE LAT. = 32.3835421°N LONG. = 103.5027859°W</p> <p>NMSP EAST (FT) N = 504259.48 E = 797729.82</p> <p>E O CORNER SEC. 19 LAT. = 32.3771965°N LONG. = 103.5006384°W</p> <p>NMSP EAST (FT) N = 501956.01 E = 798404.55</p> <p>GAUCHO UNIT #16H ELEV. = 3446.9' LAT. = 32.3704857°N (NAD83) LONG. = 103.5028193°W</p> <p>NMSP EAST (FT) N = 499509.37 E = 797750.19</p> <p>200'</p> <p>670'</p> <p>589°32'14"W 2604.35 FT</p>		<p>17 OPERATOR CERTIFICATION I hereby certify that the information contained herein is true and complete to the best of my knowledge and belief, and that this organization either owns a working interest or unleased mineral interest in the land including the proposed bottom hole location or has a right to drill this well at this location pursuant to a contract with an owner of such a mineral or working interest, or to a voluntary pooling agreement or a compulsory pooling order heretofore entered by the division.</p> <p><i>D. H. Cook</i> 7/25/2013 Signature Date</p> <p>David H. Cook Regulatory Specialist Printed Name</p> <p>david.cook@dm.com E-mail Address</p> <p>18 SURVEYOR CERTIFICATION I hereby certify that the well location shown on this plat was plotted from field notes of actual surveys made by me or under my supervision, and that the same is true and correct to the best of my belief.</p> <p>JULY 19, 2013 Date of Survey</p> <p><i>[Signature]</i> Signature and Seal of Professional Surveyor</p> <p>Certificate Number: 12797 SURVEY NO. 2028</p>
--	--	--	--	--

MAY 20 2014

pm

SECTION 19, TOWNSHIP 22 SOUTH, RANGE 34 EAST, N.M.P.M.
LEA COUNTY, STATE OF NEW MEXICO
SITE MAP

NOTE: LATITUDE AND LONGITUDE COORDINATES ARE SHOWN USING THE NORTH AMERICAN DATUM OF 1983 (NAD83). LISTED NEW MEXICO STATE PLANE EAST COORDINATES ARE GRID (NAD83). BASIS OF BEARING AND DISTANCES USED ARE NEW MEXICO STATE PLANE EAST COORDINATES MODIFIED TO THE SURFACE



010 50 100 200

SCALE 1" = 100'

DIRECTIONS TO LOCATION

FROM THE INTERSECTION OF STATE HIGHWAY 128 AND DELAWARE BASIN ROAD GO NORTH AND EAST ON DELAWARE BASIN ROAD APPROX. 9.5 MILES TO A LEASE ROAD ON LEFT (NORTH) TURN NORTH ON LEASE ROAD GO APPROX. 3.4 MILES TO EXISTING PAD ON LEFT (WEST) AT THE MIDDLE SOUTH EDGE OF PAD IS A ROAD LATH WITH RED AND WHITE FLAGGING, GO SOUTH 100' TO A ROAD LATH PI RIGHT, GO RIGHT (WEST) FOLLOW ROAD LATHS APPROX. 0.4 MILES TO LOCATIONS.

DEVON ENERGY PRODUCTION COMPANY, L.P.

GAUCHO UNIT #16H

LOCATED 200 FT. FROM THE SOUTH LINE
AND 670 FT. FROM THE EAST LINE OF

SECTION 19, TOWNSHIP 22 SOUTH,
RANGE 34 EAST, N.M.P.M.

LEA COUNTY, STATE OF NEW MEXICO

JULY 19, 2013

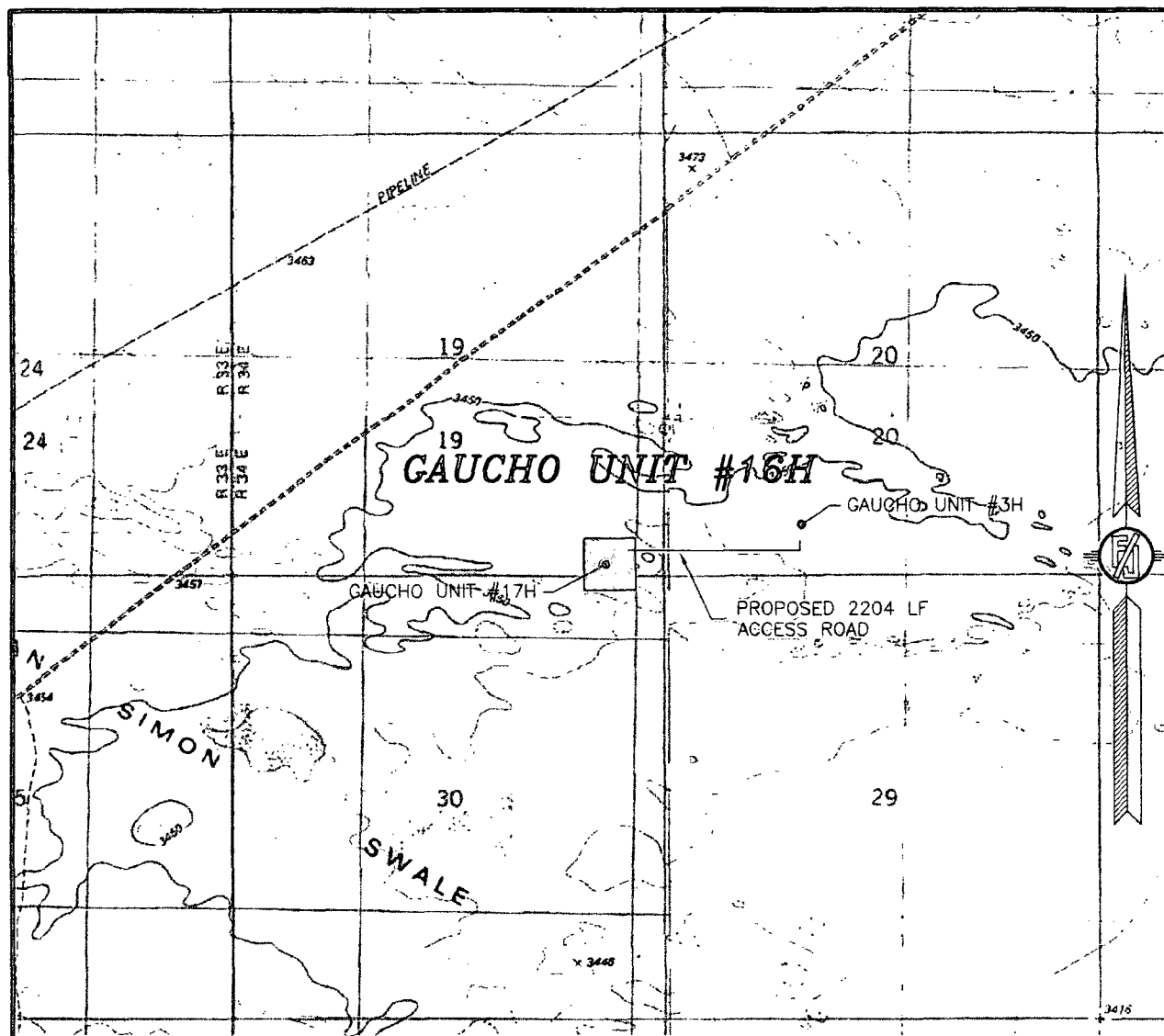
SURVEY NO. 2028

MADRON SURVEYING, INC.

301 SOUTH CANAL
(575) 234-3341

CARLSBAD, NEW MEXICO

SECTION 19, TOWNSHIP 22 SOUTH, RANGE 34 EAST, N.M.P.M.
LEA COUNTY, STATE OF NEW MEXICO
LOCATION VERIFICATION MAP



USGS QUAD MAP:
SAN SIMON RANCH

NOT TO SCALE

DEVON ENERGY PRODUCTION COMPANY, L.P.

GAUCHO UNIT #16H

LOCATED 200 FT. FROM THE SOUTH LINE
AND 670 FT. FROM THE EAST LINE OF
SECTION 19, TOWNSHIP 22 SOUTH,
RANGE 34 EAST, N.M.P.M.
LEA COUNTY, STATE OF NEW MEXICO

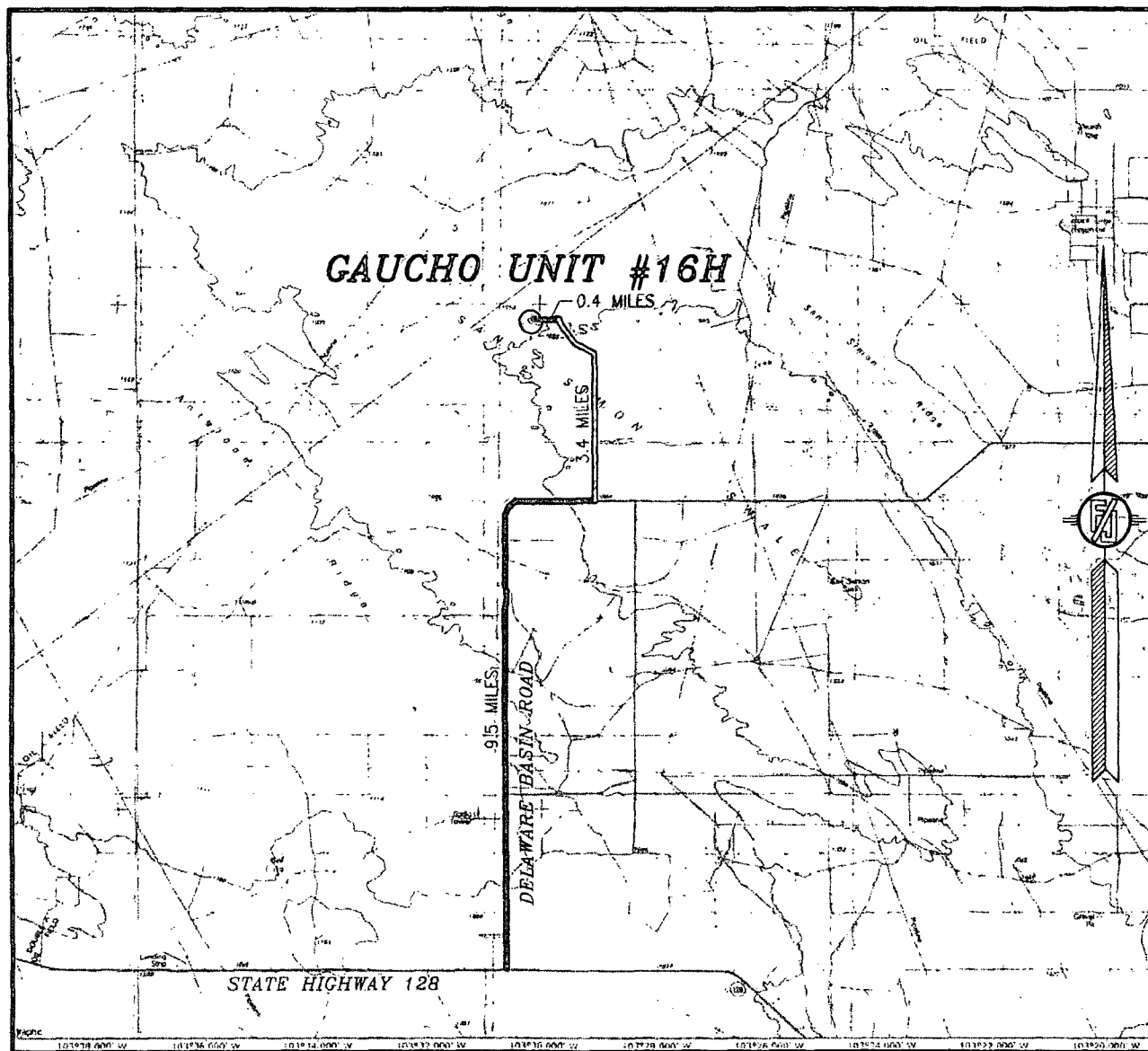
JULY 19, 2013

SURVEY NO. 2028

MADRON SURVEYING, INC. 301 SOUTH CANAL
(575) 234-3341

CARLSBAD, NEW MEXICO

SECTION 19, TOWNSHIP 22 SOUTH, RANGE 34 EAST, N.M.P.M.
LEA COUNTY, STATE OF NEW MEXICO
VICINITY MAP



NOT TO SCALE

DEVON ENERGY PRODUCTION COMPANY, L.P.

GAUCHO UNIT #16H

LOCATED 200 FT. FROM THE SOUTH LINE
AND 670 FT. FROM THE EAST LINE OF
SECTION 19, TOWNSHIP 22 SOUTH,
RANGE 34 EAST, N.M.P.M.
LEA COUNTY, STATE OF NEW MEXICO

JULY 19, 2013

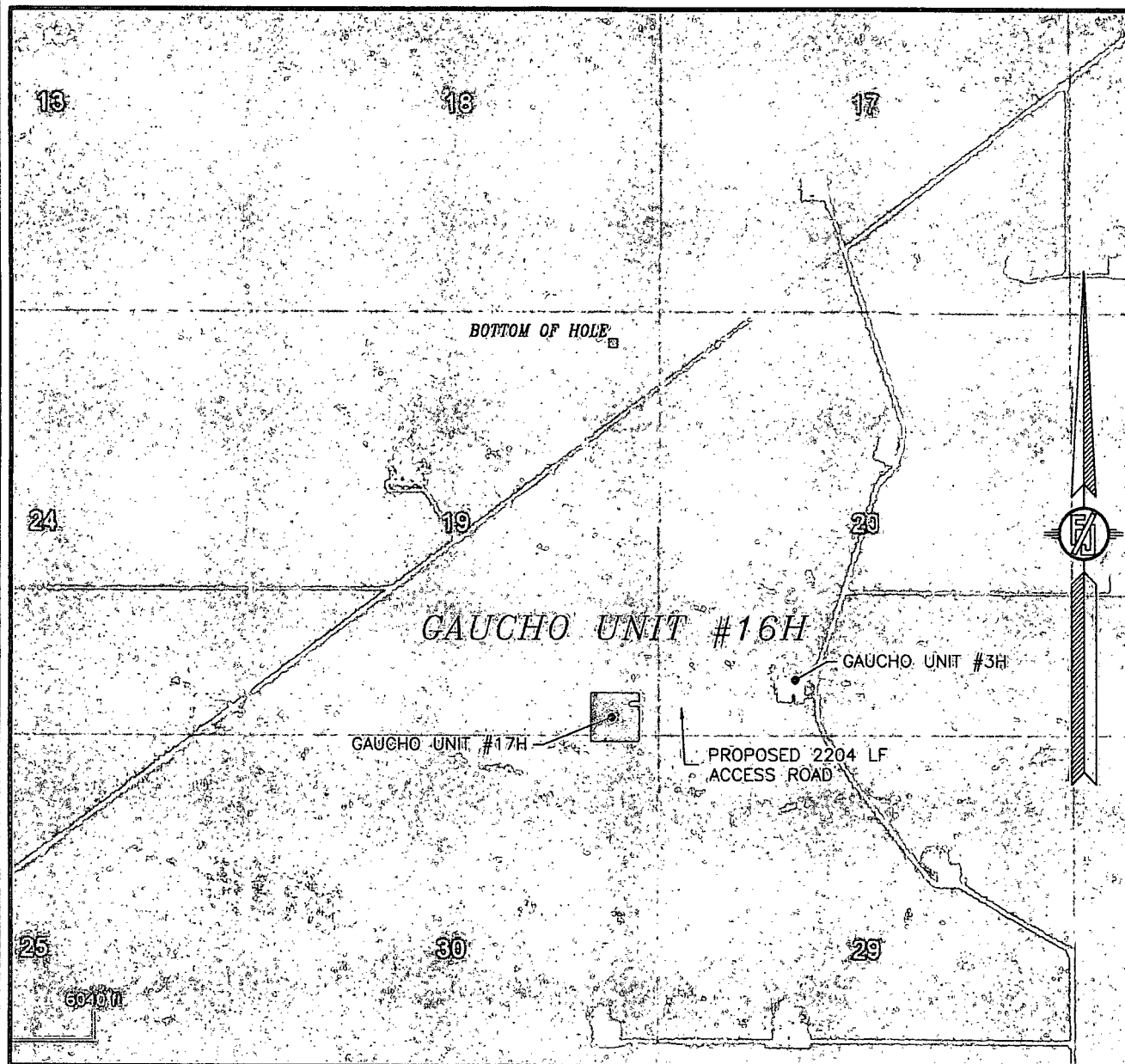
DIRECTIONS TO LOCATION

FROM THE INTERSECTION OF STATE HIGHWAY 128 AND DELAWARE BASIN ROAD GO NORTH AND EAST ON DELAWARE BASIN ROAD APPROX. 9.5 MILES TO A LEASE ROAD ON LEFT (NORTH) TURN NORTH ON LEASE ROAD GO APPROX. 3.4 MILES TO EXISTING PAD ON LEFT (WEST) AT THE MIDDLE SOUTH EDGE OF PAD IS A ROAD LATH WITH RED AND WHITE FLAGGING, GO SOUTH 100' TO A ROAD LATH PI RIGHT, GO RIGHT (WEST) FOLLOW ROAD LATHS APPROX. 0.4 MILES TO LOCATIONS.

SURVEY NO. 2028

MADRON SURVEYING, INC. 301 SOUTH CANAL (575) 234-3341 CARLSBAD, NEW MEXICO

SECTION 19, TOWNSHIP 22 SOUTH, RANGE 34 EAST, N.M.P.M.
LEA COUNTY, STATE OF NEW MEXICO
AERIAL PHOTO



NOT TO SCALE
AERIAL PHOTO:
GOOGLE EARTH
MARCH 2012

DEVON ENERGY PRODUCTION COMPANY, L.P.

GAUCHO UNIT #16H

LOCATED 200 FT. FROM THE SOUTH LINE
AND 670 FT. FROM THE EAST LINE OF
SECTION 19, TOWNSHIP 22 SOUTH,
RANGE 34 EAST, N.M.P.M.
LEA COUNTY, STATE OF NEW MEXICO

JULY 19, 2013

SURVEY NO. 2028

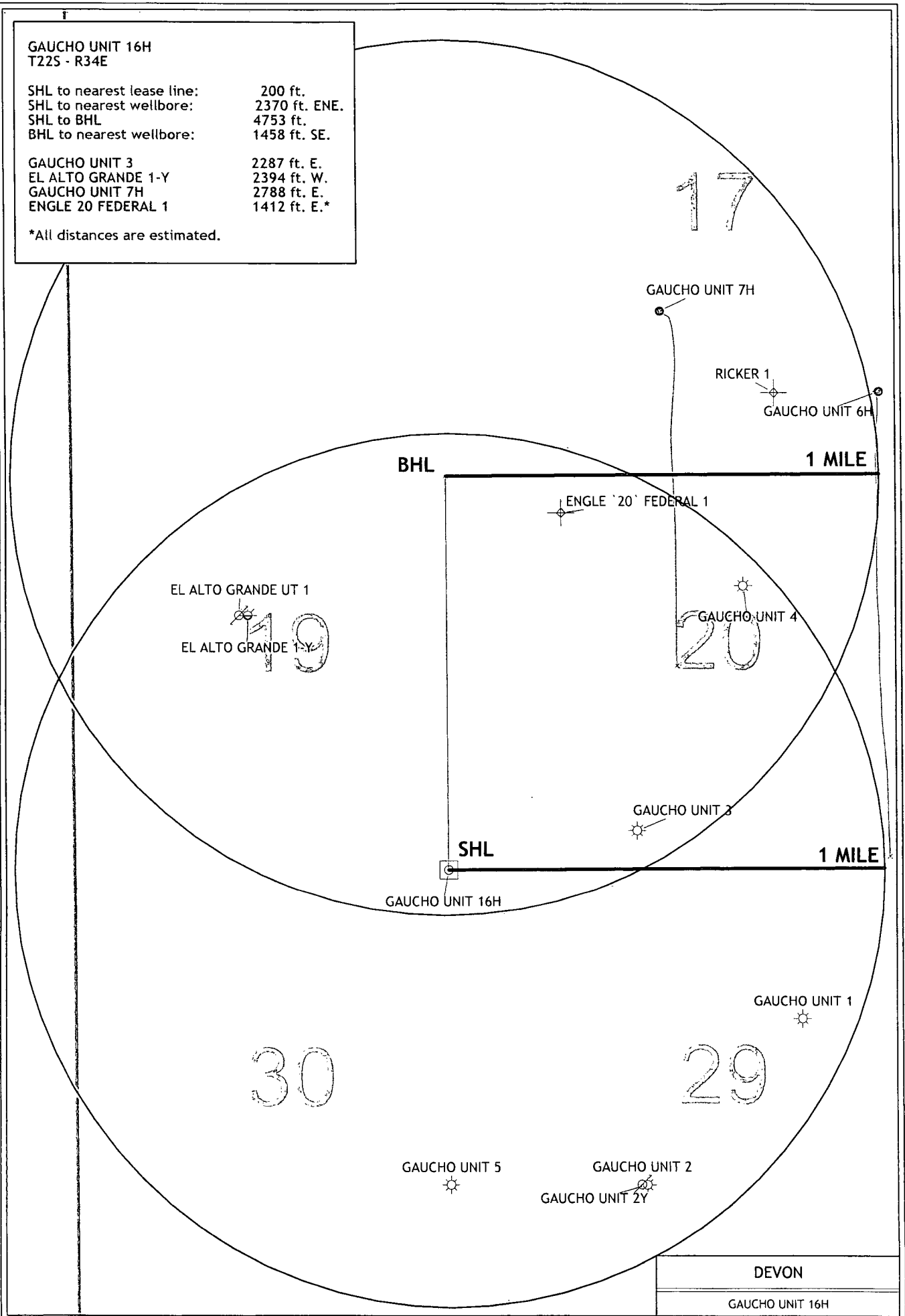
MADRON SURVEYING, INC. 301 SOUTH CANAL CARLSBAD, NEW MEXICO
(575) 234-3341

GAUCHO UNIT 16H
T22S - R34E

SHL to nearest lease line: 200 ft.
SHL to nearest wellbore: 2370 ft. ENE.
SHL to BHL 4753 ft.
BHL to nearest wellbore: 1458 ft. SE.

GAUCHO UNIT 3 2287 ft. E.
EL ALTO GRANDE 1-Y 2394 ft. W.
GAUCHO UNIT 7H 2788 ft. E.
ENGLE 20 FEDERAL 1 1412 ft. E.*

*All distances are estimated.



DEVON

GAUCHO UNIT 16H