

Submit 1 Copy To Appropriate District Office

District I - (575) 393-6161
1625 N. French Dr., Hobbs, NM 88240
District II - (575) 748-1283
811 S. First St., Artesia, NM 88210
District III - (505) 334-6178
1000 Rio Brazos Rd., Aztec, NM 87410
District IV - (505) 476-3460
1220 S. St. Francis Dr., Santa Fe, NM 87505

State of New Mexico
Energy, Minerals and Natural Resources

HOBBS OCD

MAY 19 2014

RECEIVED

OIL CONSERVATION DIVISION
1220 South St. Francis Dr.
Santa Fe, NM 87505

Form C-103
Revised July 18, 2013

WELL API NO. 30-025-06629
5. Indicate Type of Lease STATE <input checked="" type="checkbox"/> FEE <input type="checkbox"/>
6. State Oil & Gas Lease No. BO-1557
7. Lease Name or Unit Agreement Name West Blinbry Drinkard Unit (WBDU) / 37346
8. Well Number 061
9. OGRID Number 873
10. Pool name or Wildcat Eunice; B-T-D, North (22900)

SUNDRY NOTICES AND REPORTS ON WELLS (DO NOT USE THIS FORM FOR PROPOSALS TO DRILL OR TO DEEPEN OR PLUG BACK TO A DIFFERENT RESERVOIR. USE "APPLICATION FOR PERMIT" (FORM C-101) FOR SUCH PROPOSALS.)	
1. Type of Well: Oil Well <input checked="" type="checkbox"/> Gas Well <input type="checkbox"/> Other <input type="checkbox"/>	
2. Name of Operator Apache Corporation	
3. Address of Operator 303 Veterans Airpark Lane, Suite 1000 Midland, TX 79705	
4. Well Location Unit Letter <u>D</u> : <u>660</u> feet from the <u>North</u> line and <u>660</u> feet from the <u>West</u> line Section <u>16</u> Township <u>21S</u> Range <u>37E</u> NMPM County <u>Lea</u>	
11. Elevation (Show whether DR, RKB, RT, GR, etc.) 3499' GL	

12. Check Appropriate Box to Indicate Nature of Notice, Report or Other Data

NOTICE OF INTENTION TO:

PERFORM REMEDIAL WORK ☐ PLUG AND ABANDON ☐
TEMPORARILY ABANDON ☐ CHANGE PLANS ☐
PULL OR ALTER CASING ☐ MULTIPLE COMPL ☐
DOWNHOLE COMMINGLE ☐
CLOSED-LOOP SYSTEM ☐
OTHER: CONVERT TO INJECTION ☒

SUBSEQUENT REPORT OF:

REMEDIAL WORK ☐ ALTERING CASING ☐
COMMENCE DRILLING OPNS. ☐ P AND A ☐
CASING/CEMENT JOB ☐
OTHER: ☐

13. Describe proposed or completed operations. (Clearly state all pertinent details, and give pertinent dates, including estimated date of starting any proposed work). SEE RULE 19.15.7.14 NMAC. For Multiple Completions: Attach wellbore diagram of proposed completion or recompletion.

Apache intends to convert this well to injection, per the attached procedure. Order WFX-913 was issued on 6/28/2013, R-12981.

Spud Date:

6/6/1949

Rig Release Date:

7/27/1949

I hereby certify that the information above is true and complete to the best of my knowledge and belief.

SIGNATURE

Reesa Fisher

TITLE Sr. Staff Reg Analyst

DATE 5/15/2014

Type or print name Reesa Fisher

E-mail address: Reesa.Fisher@apachecorp.com

PHONE: (432) 818-1062

For State Use Only

APPROVED BY:

[Signature]

TITLE

Petroleum Engineer

DATE

05/22/14

Conditions of Approval (if any)

MAY 22 2014

WBDU 61 (API: 30-025-06629) Proposed Procedure

Retrieve Permanent Packer, Deepen Well, Run Liner, and Convert Well to Injection in the Drinkard Formation

May 14, 2014

Day 1: MIRU SR. POOH and LD pump and rods. ND WH and NU BOPs. POOH and LD 2-3/8" production tubing.

Day 2: PU & RIH w/ bit on 2-7/8" work string, RIH to top of permanent packer @ +/-6661', circulate clean (circulate LCM to establish circulation as necessary) and POOH

Day 3: PU & RIH w/ washover shoe and wash pipe on 2-7/8" work string to +/-6661'. Attempt to wash over/cut over and retrieve packer

Day 4: Cont. to attempt to wash over/cut over and retrieve packer

Day 5: Wash over/cut over and retrieve packer, POOH

Day 6: PU & RIH w/ bit on 2-7/8" work string. Clean well out to TD @ +/-6690', circulate LCM as necessary

Day 7: Cont. to clean well out to TD @ +/-6690', circulate LCM as necessary. Drill well out to new TD @ +/-6800', circulate LCM as necessary

Day 8: Cont. to drill well out to new TD @ +/-6800', circulate LCM as necessary. Circulate wellbore clean and POOH and LD 2-7/8" work string

Day 9: MIRU WL, run GR/CNL/CBL/CCL log from PBTD to surface, POOH. Send logs to Midland

Day 10: RU casing crew and equipment and RIH with 4-1/2" 11.6 lb/ft flush joint casing with float collar and float shoe to +/- 6800'

RU cementers, perform single stage cement job to surface consisting of 20 bbl fresh water flush, 40 bbl seal bond LCM spacer, and 150 sacks of Class C cement + additives (weight 13.2 ppg, yield 1.60 cf/sack, volume 42 bbls, 50% excess slurry). Displace with 105 bbls fresh water (confirm all volumes)

Day 11: WOC

Day 12: RIH w/ 3-3/4" bit on 2-3/8" work string. Drill out float collar and cement to +/- 6785'. Circulate clean. POOH

Day 13: MIRU WL and RIH w/ GR/CBL/CCL, log well from TD to surface, POOH

PU and RIH w/ 3-3/8" TAGs loaded with SDP charges and perforate the Drinkard @ 4 SPF, 90 deg phasing (estimated 70', 280 shots), POOH

PU and RIH w/ treating packer on 2-3/8" work string

Day 14: Cont. RIH w/ treating packer on 2-3/8" work string. Set packer @ +/-6550'

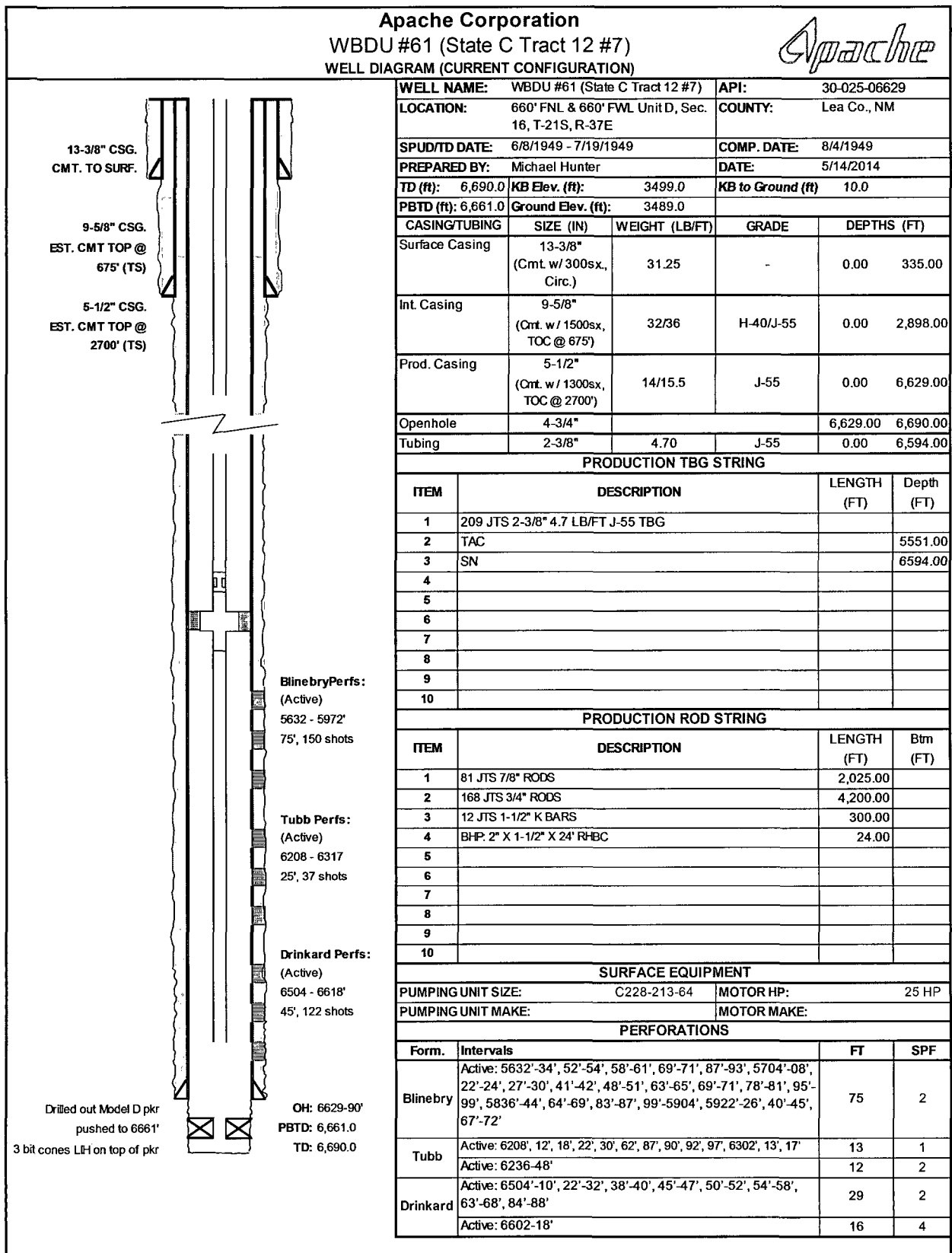
MIRU acidizers. Acidize the Drinkard w/10,000 gals 15% HCl and rock salt in 3 equal stages @ +/- 8 BPM. Release packer. Wash out salt. POOH

Day 15: PU and RIH with 4-1/2" injection packer with 2-3/8" IPC tubing subs, upper and lower profile nipples, and on/off tool on 2-3/8" work string. Set packer @ +/-6550'. Release on/off tool and pressure test casing to 500 psi. POOH and LD 2-3/8" work string

Day 16: PU & RIH w/2-3/8" IPC injection tubing and on/off tool. Circulate packer fluid and latch onto packer with on/off tool. ND BOPs and NU WH. Pressure test casing to 500 psi. RDMO SR

Day 17: Perform MIT test for NM OCD. Place well on injection

Current Wellbore Diagram



Proposed Wellbore Diagram

