

Submit 1 Copy To Appropriate District  
Office  
District I - (575) 393-6161  
1625 N. French Dr., Hobbs, NM 88240  
District II - (575) 748-1283  
811 S. First St., Artesia, NM 88210  
District III - (505) 334-6178  
1000 Rio Brazos Rd., Aztec, NM 87410  
District IV - (505) 476-3460  
1220 S. St. Francis Dr., Santa Fe, NM  
87505

State of New Mexico

Energy, Minerals and Natural Resources

Form C-103

Revised July 18, 2013

HOBBS OGD

MAY 22 2014

RECEIVED

OIL CONSERVATION DIVISION

1220 South St. Francis Dr.  
Santa Fe, NM 87505

WELL API NO. 30-025-32810
5. Indicate Type of Lease STATE <input checked="" type="checkbox"/> FEE <input type="checkbox"/>
6. State Oil & Gas Lease No.
7. Lease Name or Unit Agreement Name CENTRAL VACUUM UNIT
8. Well Number 244
9. OGRID Number 4323
10. Pool name or Wildcat VACUUM; GRAYBURG SAN ANDRES

SUNDRY NOTICES AND REPORTS ON WELLS (DO NOT USE THIS FORM FOR PROPOSALS TO DRILL OR TO DEEPEN OR PLUG BACK TO A DIFFERENT RESERVOIR. USE "APPLICATION FOR PERMIT" (FORM C-101) FOR SUCH PROPOSALS.)	
1. Type of Well: Oil Well <input checked="" type="checkbox"/> Gas Well <input type="checkbox"/> Other INJECTOR	
2. Name of Operator CHEVRON U.S.A. INC.	
3. Address of Operator 15 SMITH ROAD, MIDLAND, TEXAS 79705	
4. Well Location Unit Letter: B 10 feet from NORTH line and 1930 feet from the EAST line Section 6 Township 18S Range 35E NMPM County LEA	
11. Elevation (Show whether DR, RKB, RT, GR, etc.)	

12. Check Appropriate Box to Indicate Nature of Notice, Report or Other Data

NOTICE OF INTENTION TO:

PERFORM REMEDIAL WORK ☐ PLUG AND ABANDON ☐  
TEMPORARILY ABANDON ☐ CHANGE PLANS ☐  
PULL OR ALTER CASING ☐ MULTIPLE COMPL ☐  
DOWNHOLE COMMINGLE ☐  
CLOSED-LOOP SYSTEM ☐  
OTHER:

SUBSEQUENT REPORT OF:

REMEDIAL WORK ☐ ALTERING CASING ☐  
COMMENCE DRILLING OPNS. ☐ P AND A ☐  
CASING/CEMENT JOB ☐  
OTHER: MECHANICAL INTEGRITY TEST = REPAIRS

13. Describe proposed or completed operations. (Clearly state all pertinent details, and give pertinent dates, including estimated date of starting any proposed work). SEE RULE 19.15.7.14 NMAC. For Multiple Completions: Attach wellbore diagram of proposed completion or recompletion.

PLEASE FIND ATTACHED, REPORTS FOR WORK DONE FROM 04/11/2014 THROUGH 04/24/2014.

04/24/2014: RAN CHART FOR NMOCD. PRESS TO 50 PSI FOR 32 MINUTES. (ORIGINAL CHART & COPY OF CHART ATTACHED).

PKR SET @ 4203'

Spud Date:

Rig Release Date:

I hereby certify that the information above is true and complete to the best of my knowledge and belief.

SIGNATURE

*Denise Pinkerton*

TITLE REGULATORY SPECIALIST

DATE 05/19/2014

Type or print name DENISE PINKERTON

E-mail address: [leakejd@chevron.com](mailto:leakejd@chevron.com)

PHONE: 432-687-7375

For State Use Only

APPROVED BY:

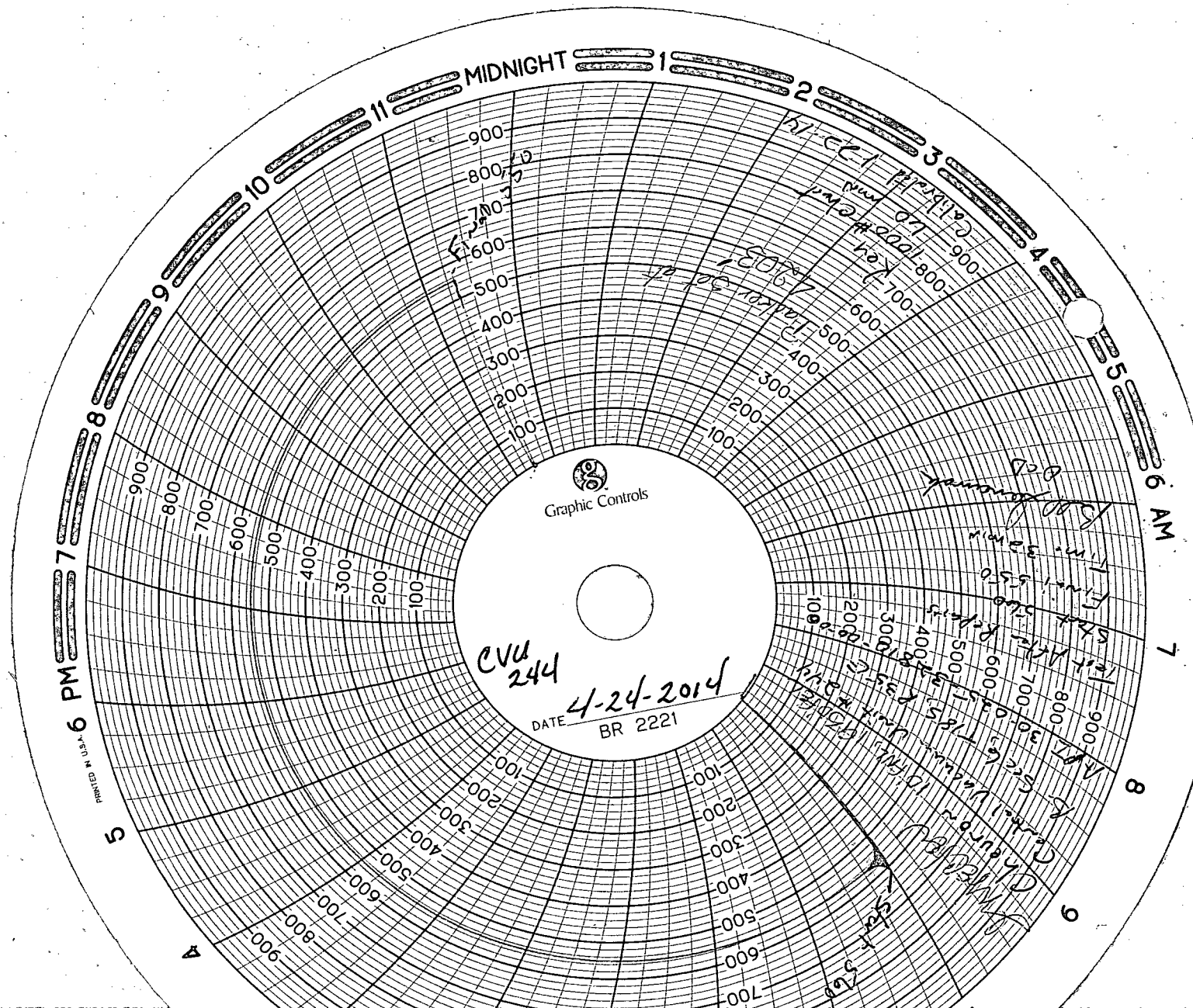
*Bill Snamah*

TITLE Staff Manager

DATE 5/23/2014

Conditions of Approval (if any):

MAY 27 2014





# Summary Report

Major Rig Work Over (MRWO)  
Mechanical Integrity Test  
Job Start Date: 4/11/2014  
Job End Date: 4/24/2014

Well Name CENTRAL VACUUM UNIT 244		Lease Central Vacuum Unit	Field Name Vacuum	Business Unit Mid-Continent	
Ground Elevation (ft) 3,973.00	Original RKB (ft) 3,987.00	Current RKB Elevation		Mud Line Elevation (ft)	Water Depth (ft)

Report Start Date: 4/11/2014

Com

Spot in rig and drilling equipment to kill well.

Pumped 36 BBLs of 10# Brine, shut down pump well had 0 PSI.

RU slick line truck and RIH with a 1.5" plug at 4223 FT to isolate the tubing. POOH and RD slick line. SIWFN

Report Start Date: 4/12/2014

Com

No activity on well.

Report Start Date: 4/13/2014

Com

No activity on well.

Report Start Date: 4/14/2014

Com

No activity on well.

Had high winds shut down operations.

No activity on well.

Report Start Date: 4/15/2014

Com

NO ACTIVITY ON WELL

CREW TRAVEL

ZERO PSI ON TBG. & CSG. FUNCTION TEST BOP. CALLIPERED 2 7/8" TBG ELEVATORS. ND CO2 TREE, NUBOP. CLOSED TBG RAMS, TEST PIPE RAMS AGAINST TBG HANGER. 500 HIGH/250 LOW. GOOD TEST.

MADE ATTEMPT TO RELEASE O/O TOOL FROM PACKER. PU ON TUBING AND HAD A DIRECT PULL OF 65K ON WEIGHT INDICATOR WITH 11" STRETCH. WORKED WITH TUBING AT DIFFERENT INCRIMENTS TO ATTEMPT TO RELEASE O/O TOOL, NO LUCK. POSSIBLE STUCK PIPE. CALLED REMEDIAL ENGINEER TO DISCUSS. AGREED TO CALL WIRELINE TO FREE POINT TBG.

WAIT ON ROTARY WIRELINE TO FREE POINT TBG.

MIRU ROTARY WIRELINE, FREE POINT TUBING FROM SURFACE TO 4208'. ROTARY IS INDICATING THAT TUBING IS FREE TO PACKER.

RIH W/ 1 - 9/16" GUN TO SHOOT 4 HOLES W/ 1.8 GRAM SHOT. ROH W/ TOOLS, ALL 4 SHOTS FIRED. ATTEMPT TO CIRCULATE DOWN TUBING W/ 1500 PSI. (NO LUCK). TRIED TO PUMP DOWN BACK SIDE W/ 500 PSI, NO LUCK. LOOSING PSI TO POSSIBLE CASING LEAK. CALLED REMEDIAL ENGINEER EVAN ASIRE TO DISCUSS. AGREED TO TRY AGAIN WITH A STRONGER SHOT. ROTARY TO GET A 3.2 GRAM SHOT WITH A MECHANICAL DECENTRALIZER FROM ODESSA, TX. WILL RUN FIRST THING WED. MORNING.

CREW TRAVEL

NO ACTIVITY ON WELL.

Report Start Date: 4/16/2014

Com

NO ACTIVITY ON WELL

CREW TRAVEL

TUBING PSI (0), CSG PSI (SMALL BLOW.), PRESSURE TESTED TUBING TO 700 PSI, NO LOSS. PRESSURE TEST CASING TO 500 PSI, BLED DOWN IN LESS THAN 2 MINS. RIH W/ 1 9/16" GUN W/ MECH. DE-CENTRALIZER. ENCOUNTERED PARAFFIN @ 90'. WORKED WITH TOOLS AND ONLY WENT DOWN 10'. CAME OUT OF THE HOLE WITH TOOLS. PU AND RIH W/ 1 9/16" CHESEL TOOL W/ 2 WEIGHT BARS (20'). WORKED FROM 90' TO 105', COULD NOT GO THRU.

BROUGHT IN 250' OF RODS. CALLIPERED ROD ELEVATORS. RAN RODS INSIDE TUBING W/ 1 5/8" PARAFFIN KNIFE FROM SURFACE TO 250'. MOST OF HEAVY PARAFFIN CONCENTRATED @ 90' TO 150' FROM SURFACE. TOH W/ RODS AND PARAFFIN KNIFE.

PU 1 9/16" GUN W/ MECH. DECENTRALIZER AND MADE ANOTHER ATTEMPT TO GO DOWN TUBING. HIT PARAFFIN AT 100' FROM SURFACE. WORKED WITH TOOLS TO PUSH DOWN, NO LUCK. ROH W/ TOOLS AND LAYED DOWN. CALLED REMEDIAL ENGINEER TO DISCUSS THAT MECH DECENTRALIZER WAS DRAGGING GUN AGAINST ID OF PIPE AND BALLING UP PARAFFIN.. AGREED TO LEAVE OUT MECH. DECENTRALIZER AND RUN TOOLS WITH MAGNET DECENTRALIZER.

PU RODS AND TIH W/ 1 5/8" PARAFFIN KNIFE AND CLEAN FROM SURFACE TO 250'. WORK AREA A GOOD 30 MINS. TOH LAYED DOWN RODS AND PARAFFIN KNIFE.

PU 1 9/16" GUN W/ MAGNET DECENTRALIZER TO PERF. HOLES IN TUBING @ 4163', 10' FROM TOP COLLAR OF 2 JT ABOVE PKR. ROH W/ TOOLS AND LAYED DOWN. ALL 4 SHOTS FIRED.

ATTEMPT TO CIRCULATE DOWN BACKSIDE & PRESSURED UP TO 500 PSI. DID NOT SEE ANY RETURNS ON TBG SIDE. STARTED TO PUMP DOWN TUBING, PSI CLIMBED TO 1500 PSI, STOPPED PUMPING AND NOTICED VERY LITTLE RETURNS AS PRESSURE WAS COMING DOWN AT REVERSE PIT. PRESSURED UP AGAIN TO 1500 PSI, AND SAW SAME RESULTS. KEPT PRESSURING UP TO 1500 PSI AND SURGING FLUID BACK TO PIT TO SEE IF WE COULD BREAK SOMETHING LOOSE AROUND PERF. HOLES. (NO LUCK). CALLED ENGINEER TO DISCUSS. DECISION WAS MADE TO PULL BLANKEN PLUG FROM WELL TO SEE IF WE COULD RELEASE PKR ASSEMBLY.

NOTE: CO2 TREE WAS PICKED BY ACME TRUCKING TO BE SERVICED BY VETCO GRAY..

MIRU ARCHER WIRELINE, RIH TO RETRIEVE 1.5" "F" BLANKEN PLUG. PARAFFIN @ 100' - 175'. ROH W/ BLANKEN PLUG AND TOOLS. RD ARCHER WIRELINE



# Summary Report

Major Rig Work Over (MRWO)  
Mechanical Integrity Test  
Job Start Date: 4/11/2014  
Job End Date: 4/24/2014

Well Name CENTRAL VACUUM UNIT 244		Lease Central Vacuum Unit	Field Name Vacuum	Business Unit Mid-Continent	
Ground Elevation (ft) 3,973.00	Original RKB (ft) 3,987.00	Current RKB Elevation		Mud Line Elevation (ft)	Water Depth (ft)

Com

CALLIPERED TUBING ELEVATORS. LATCHED ON TO TUBING AND ATTEMPTED TO RELEASE PKR ASSEMBLY. PACKER WOULD NOT RELEASE. WORKED WITH TUBING UP AND DOWN FOR A WHILE. TRIED TO RELEASE PKR AGAIN, NO LUCK. CONTINUE TO WORK TUBING UP AND DOWN PULLING UP TO 63K. (36K OVER WEIGHT OF PIPE). TRIED TO RELEASE PKR ASSEMBLY, TUBING CAME UP AROUND 6" TO 8" PUTTING TUBING HANGER ON UPPER SECTION OF BOP. PKR DID NOT RELEASE. WENT AHEAD AND SET TUBING HANGER BACK IN TUBING HEAD. CALL REMEDIAL ENGINEER TO LET HIM KNOW. WILL CONTINUE TO WORK WITH TUBING IN THE MORNING.

CREW TRAVEL

NO ACTIVITY ON WELL

Report Start Date: 4/17/2014

Com

NO ACTIVITY ON WELL

CREW TRAVEL

JSA, TGSM, DISCUSSED CO2 ISSUES, STRUCK PIPE. CALLIPERED 2 7/8" ELEVATORS. NEW RELIEF OPERATOR, DISCUSSED CHEVRON WAY, SWA, IFO. CASING 200 PSI, TUBING HAD 950 PSI. BLED WELL DOWN, PUMPED 40 BBLS DOWN TBG, WELL WENT ON VACUUM.

NUBOP (ANNULAR) FOR SECONDARY WELL CONTROL. FUNCTION TEST. (GOOD). TESTED ANNULAR AGAINST TUBING HANGER, 500 HIGH/ 250 LOW. GOOD TEST

CONTINUE TO WORK WITH TBG/PKR UP & DOWN, PULLED 65K ( 38K OVER TBG WEIGHT). TUBING CAME UP ANOTHER 6" AND HUNG UP. CONTINUED TO WORK TBG/ PKR SOME MORE, PKR CAME LOOSE.. WELL STARTED TO FLOW UP CASING, CAME BACK DOWN WITH TUBING HANGER..

CONNECTED REVERSE UNIT LINE TO TUBING. PUMPED 90 BBLS TO SEE IF WE COULD CIRCULATE. NO LUCK (CHARGED FORMATION). OPENED CASING TO FLOWBACK TANK AND BLED CASING DOWN TO ZERO.

TOH W/ 15 JTS, 1ST JT PULLED, DRAGGED UP HOLE AROUND 60K BREAKING LOOSE TO STRING WEIGHT AT THE END OF TUBING.. THE REMAINING 14 JTS PULLED UP FAIRLY EASY.

ATTEMPT TO CIRCULATE AGAIN. GOT GOOD CIRCULATION OF 10# BRINE ALL AROUND. CIRCULATED 130 BBLS. WELL DEAD ON CSG & TBG.

CONTINUE TOH AND LAYING DOWN WITH 2 7/8" J-55 FIBERLINE INJ STRING. JT #24 (784'), JTS 56 - 65 (1802' - 2089') , FULL OF IRON SULFIDE AND SCALE AROUND OUTSIDE OF BODY OF TUBING. . JTS 131 & 132, SHOTS DID PENETRATE THRU TUBING. IRON SULFIDE AND SCALE HAD US PLUGGED UP. TALLY PRODUCTION TBG & OFFLOAD FROM RACKS. MI 2 7/8" L-80 WORKSTRING, TALLY.

TOTAL JTS PULLED FROM WELL = 132 J-55 2 7/8" FIBERLINE TUBING AND 5.5" ARROWSET PKR. PKR SETTING BY TUBING TALLY @ 4223.53 (TOP OF PKR), 4232.88 (BTM OF PKR)

RIH W/ RBP TO TEST BLIND RAMS 500 HIGH/250 LOW. GOOD TEST.

PUMPED 60 BBLS 10# BRINE DOWN CASING. PU 4 3/4" MTB, XO, & 48 JTS 2 7/8" L-80 TO PUT EOB @ 1536'.

CREW TRAVEL

NO ACTIVITY ON WELL

Report Start Date: 4/18/2014

Com

NO ACTIVITY ON WELL

CREW TRAVEL

JSA, TGSM, DISCUSSED HAND INJURY, WEEKLY DRILLS.

CONTINUE TO PU 97 JTS TO TAG FILL @ 4540' WITH 10' IN OF JT #145. LAYED DOWN JT. RIG POWER SWIVEL, INSTALLED STRIPPER HEAD.

CLEANOUT FROM 4540' TO 4796 (PBTD). RATE 3.5 BPM, 500 PSI. BIT TORQUED UP FROM 800 TO 1200 FT LBS AS WE DRILLED OUT IRON SULFIDE AND SCALE THRU 256' SECTION.

CIRCULATE HOLE CLEAN TWICE BOTTOMS UP (200 BBLS) THEN DISPLACE WITH 100 BBLS CLEAN 10 # BRINE

R/D POWER SWIVEL, PULLED 20 JTS TO PUT BIT ABOVE PERFS @ 4215'. FIRST 10 JTS PULLED, HAD DRAG OF 10K TO 15K OVER STRING WEIGHT , THEREAFTER TUBING PULLED FREE. SECURED WELL. SDFD

CREW TRAVEL

NO ACTIVITY ON WELL

Report Start Date: 4/19/2014

Com

Well shut in- No activity on location

Report Start Date: 4/20/2014

Com

Well shut in- No activity on location

Report Start Date: 4/21/2014

Com

Well shut in- No activity on location

Report Start Date: 4/22/2014

Com

No activity on well

Crew travel to location

Pre-tour safety meeting and JSA review



# Summary Report

Job Start Date: 4/23/2014  
Job End Date: 4/24/2014

Well Name CENTRAL VACUUM UNIT 244		Lease Central Vacuum Unit	Field Name Vacuum	Business Unit Mid-Continent	
Ground Elevation (ft) 3,973.00	Original RKB (ft) 3,987.00	Current RKB Elevation		Mud Line Elevation (ft)	Water Depth (ft)

Com
Tubing Pressure 200 psi, Casing Pressure 0 psi Pump 25 bbls BW down tubing. Caliper 2 7/8" tubing elevators  TOH with 133 jts and Bit to surface  Remove stripping head  TIH with 4.5" RBP, 5.5" HD packer, and 133 Joints WS  Set RBP @4196' Set packer @ 4119'  Test RBP below packer to 500# for 5 minutes-Good  Test above packer to 550# for 20 minutes- Good  No leak identified  TOH with WS from 4196' to surface. Lay down packer and RBP. TIH with 10 stands from derrick TOH laying down 10 stands  Move out Work string Move tubing to pipe rack Tally 140 Joints of new 2 7/8" fiberlined tubing  SDFD, secured well  CREW TRAVEL FROM LOCATION  WELL SHUT IN- NO ACTIVITY ON LOCATION  Report Start Date: 4/23/2014
Com
Well Shut in-No activity on location  Crew travel to location  Pre-tour safety meeting and JSA review.  CHECK PRESSURE: CP 0 PSI Caliper 2 7/8" Elevator  TIH with: Pump out plug sub 2.5" 1.95" 0.5' Packer NP AS1X (7K) 4.625" 1.95" 7.5' ON/OFF Tool 4.5" 1.5" 1.5' XO 3.5" 2.144" 0.75' 131 Joints of 2 7/8" 2.875" 2.144" 4172' 6.5# J55 fiberlined tubing 1 Pup Jt 6' Tubing 2.875" 2.144" 6.15' Transition Nipple 2.875" 2.144" 0.8'  Set depth 4203.47'  **Note: 1.5 " Profile nipple type (F)**  Load tubing and Set packer at 4203' with 10 compressions. Pretest Casing against packer to 575 psi for 40 min. No pressure loss  Circulate 114 bbls packer fluid  Tubing hanger had wrong rubber element causing it to have too much play between the top plate and rubber seal  Crew travel from location  Tubing hanger had wrong rubber element causing it to have too much play between the top plate and rubber seal  Well Shut in- No activity on location  Report Start Date: 4/24/2014
Com
Well Shut in-No activity on location  Crew travel to location



# Summary Report

Major Rig Work Over (MRWO)  
Mechanical Integrity Test  
Job Start Date: 4/11/2014  
Job End Date: 4/24/2014

Well Name CENTRAL VACUUM UNIT 244		Lease Central Vacuum Unit	Field Name Vacuum	Business Unit Mid-Continent	
Ground Elevation (ft) 3,973.00	Original RKB (ft) 3,987.00	Current RKB Elevation		Mud Line Elevation (ft)	Water Depth (ft)

Com

Pre-tour safety meeting and JSA review.  
Caliper 2 7/8" elevator

Land tubing.  
Rig down floor and steps

Nipple down BOP

Install CO2 tree and test seals on wellhead to 3000 psi for 5 minutes

Wait on OCD for 30 minutes to do MIT

Test tubing to 2700 psi until pump out plug came loose.

For MIT pumped up to 560psi and hold for 32 minutes. Had a drop of 10 psi for a final pressure of 550 psi.

Test was approved by OCD (BILL SONNAMAKER)

Derrick laid down at 10:20.  
All equipment rig down by 11:00

\*\*RIG RELEASED AT 11:00\*\*\*\*