

Submit 1 Copy To Appropriate District
Office
District I - (575) 393-6161
1625 N. French Dr., Hobbs, NM 88240
District II - (575) 748-1283
811 S. First St., Artesia, NM 88210
District III - (505) 334-6178
1000 Rio Brazos Rd., Aztec, NM 87410
District IV - (505) 476-3460
1220 S. St. Francis Dr., Santa Fe, NM
87505

State of New Mexico
Energy, Minerals and Natural Resources

Form C-103
Revised July 18, 2013

OIL CONSERVATION DIVISION

HOBBS OCD 1220 South St. Francis Dr.
Santa Fe, NM 87505

MAY 22 2014

SUNDRY NOTICES AND REPORTS ON WELLS (DO NOT USE THIS FORM FOR PROPOSALS TO DRILL OR TO DEEPEN OR PLUG BACK TO A DIFFERENT RESERVOIR. USE "APPLICATION FOR PERMIT" (FORM C-101) FOR SUCH PROPOSALS.)		WELL API NO. 30-025-38140
1. Type of Well: Oil Well <input type="checkbox"/> Gas Well <input type="checkbox"/> Other SWD		5. Indicate Type of Lease STATE <input checked="" type="checkbox"/> FEE <input type="checkbox"/>
2. Name of Operator CHEVRON U.S.A. INC.		6. State Oil & Gas Lease No.
3. Address of Operator 15 SMITH ROAD, MIDLAND, TEXAS 79705		7. Lease Name or Unit Agreement Name NEW MEXICO "O" STATE
4. Well Location Unit Letter: J 1885 feet from SOUTH line and 1978 feet from the EAST line Section 36 Township 17S Range 34E NMPM County LEA		8. Well Number 40
11. Elevation (Show whether DR, RKB, RT, GR, etc.) 3994' GL		9. OGRID Number 4323
		10. Pool name or Wildcat SWD; DEVONIAN

12. Check Appropriate Box to Indicate Nature of Notice, Report or Other Data

NOTICE OF INTENTION TO:

PERFORM REMEDIAL WORK ☐ PLUG AND ABANDON ☐
TEMPORARILY ABANDON ☐ CHANGE PLANS ☐
PULL OR ALTER CASING ☐ MULTIPLE COMPL ☐
DOWNHOLE COMMINGLE ☐
CLOSED-LOOP SYSTEM ☐
OTHER:

SUBSEQUENT REPORT OF:

REMEDIAL WORK ☐ ALTERING CASING ☐
COMMENCE DRILLING OPNS. ☐ P AND A ☐
CASING/CEMENT JOB ☐
OTHER: FISHING REPORT W/CHART

13. Describe proposed or completed operations. (Clearly state all pertinent details, and give pertinent dates, including estimated date of starting any proposed work). SEE RULE 19.15.7.14 NMAC. For Multiple Completions: Attach wellbore diagram of proposed completion or recompletion.

PLEASE FIND ATTACHED, THE REPORTS FOR WORK DONE FROM 01/07/2014 THROUGH 04/03/2014.

04/02/2014: RAN CHART FOR NMOCD. RPRESS TO 50 PSI FOR 30 MINUTES.

Spud Date:

Rig Release Date:

I hereby certify that the information above is true and complete to the best of my knowledge and belief.

SIGNATURE Denise Pinkerton TITLE REGULATORY SPECIALIST

DATE 05/19/2014

Type or print name DENISE PINKERTON

E-mail address: leakejd@chevron.com

PHONE: 432-687-7375

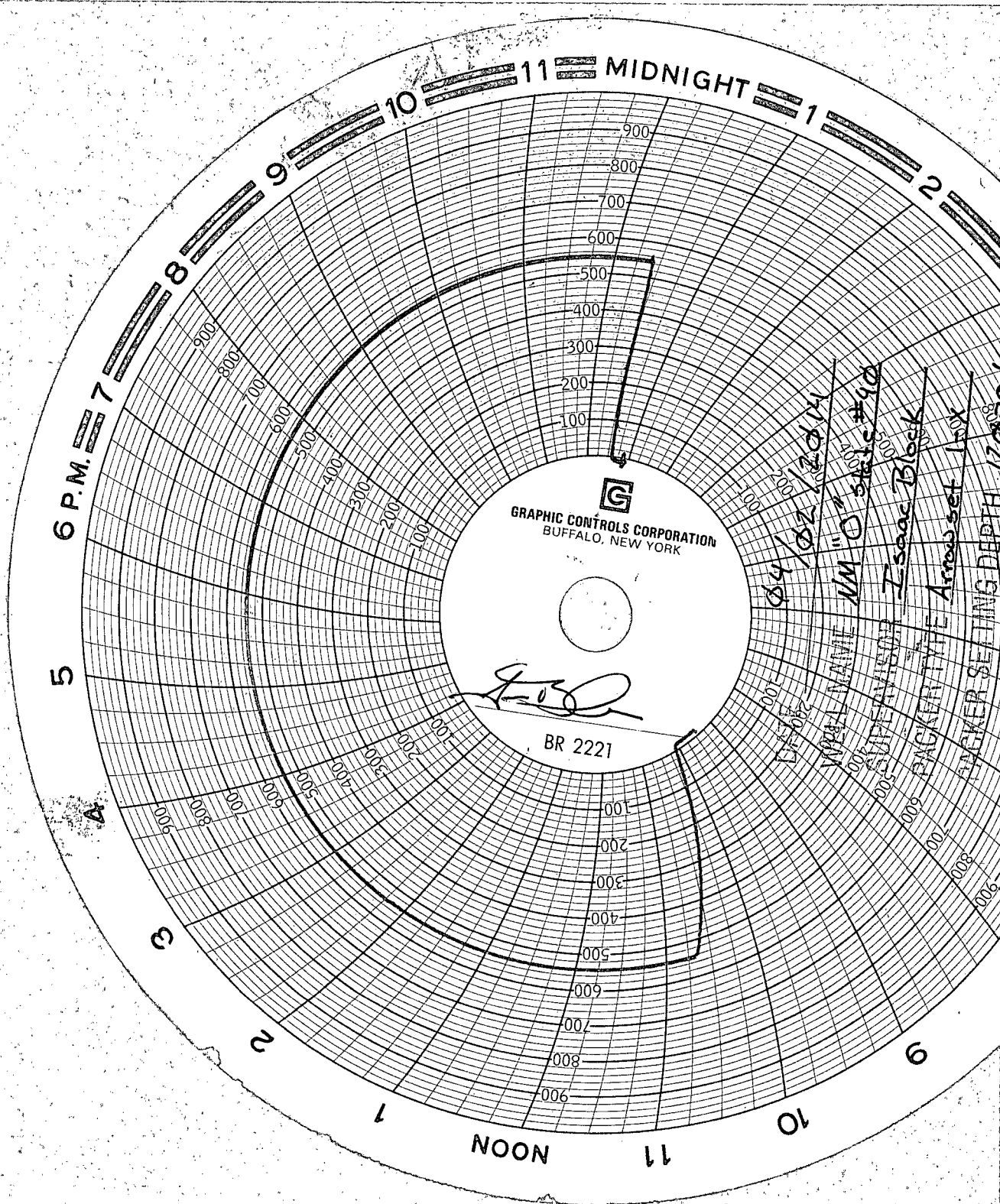
For State Use Only

APPROVED BY: Bill Lewamake TITLE Staff Manager

DATE 5/23/2014

Conditions of Approval (if any):

MAY 27 2014



GRAPHIC CONTROLS CORPORATION
BUFFALO, NEW YORK

BR 2221

04/02/2014
WELL NAME 1M O' STS #90
SUPERVISOR Isaac Black
PACKER TYPE Amos set 100
PACKER SETTING DEPTH 12000



Summary Report

Major Rig Work Over (MRWO)

Fishing

Job Start Date: 1/7/2014

Job End Date: 4/3/2014

Well Name NEW MEXICO 'O' STATE NCT-1 040		Lease New Mexico 'O' State NCT-1	Field Name Vacuum	Business Unit Mid-Continent	
Ground Elevation (ft) 3,394.00	Original RKB (ft) 3,419.00	Current RKB Elevation 3,419.00, <elvdttmstart>		Mud Line Elevation (ft)	Water Depth (ft)

Report Start Date: 1/7/2014

Com

WELL SHUT IN, NO OPERATIONS

CREW TRAVEL TO LOCATION

JSA WITH CREW AND ALL ASSOCIATED VENDORS.

SPOT IN PULLING UNIT AND RIG UP.

SPOT IN AND RIG UP REVERSE UNIT, PITS, TANKS, AND PREPARE LOCATION FOR WORK. LOCATION IS LOCATED IN A HEAVY OIL FIELD TRAFFIC AREA. SET UP BARRICADES AND SIGNS FOR ISOLATION FROM TRAFFIC.

ND WELL HEAD INJECTION RISER, AND INSTALL BLANKING FLANGE ON TREE. SHUT IN WELL.

CREW TRAVEL HOME.

WELL SHUT IN, NO OPERATIONS.

Report Start Date: 1/8/2014

Com

WELL SHUT IN, NO OPERATIONS

CREW TRAVEL TO LOCATION

JSA

INSTALL FLANGE, RIG UP ARCHER SLICK LINE UNIT

RIH W BAILER, TAG PBTD (20' OF FILL), STROKE BAILER (RECOVER SAMPLE FROM BAILER FOR CHEMICAL COMPANY).

RIH W BHP GUAGES, ***UNABLE TO FIND FLUID LEVEL. RECORDED BHP EVERY THOUSAND FEET FROM SURFACE TO PBTD.

RIH INSTALL PLUG IN 2.81" PN. LOAD TBG W FRESH WATER FOR SEATING.

PRESSURE TEST TBG (COMMUNICATION ESTABLISHED TO ANNULUS). CIRCULATED TBG AND ANNULUS. MIT FROM SURFACE TREE TO PKR/PLUG (GOOD TEST TO 600 PSI). RELEASE PSI. SHUT WELL IN.

CREW TRAVEL HOME

WELL SHUT IN, NO OPERATIONS

Report Start Date: 1/9/2014

Com

WELL SHUT IN

CREW TRAVEL TO LOCATION

JSA

PRESSURE TEST TREE (ALL VALVES)

INSTALL CHECK VALVE IN TUBING HANGER (2ND BARRIER)

NDWH

NUBOP

PREP RIG FOR POOH, SET IN LAYDOWN MACHINE AND RACKS, SHUT WELL IN

CREW TRAVEL HOME

WELL SHUT IN, NO OPERATIONS

Report Start Date: 1/10/2014

Com

WELL SHUT IN, NO OPERATIONS

CREW TRAVEL HOME

JSA

TUBING LINE INSPECTION PRIOR TO PULLING HEAVY WEIGHT (GOOD TBG LINE)

UNLOAD AND RIG UP EXPRESS CASING CREW SLIPS/TONGS/ELEVATORS (ALL TESTED AND CERTIFIED).

ATTEMPTED TO GET OFF ON/OFF TOOL PULLING UP TO 200,000# (SIX LINE-TIED BACK), (NIPPLE AND COLLAR BELOW TUBING HANGER DID NOT ALLOW CLEARANCE TO SET SLIPS BELOW TO SET TBG ON TO REMOVE HANGER). SHUT WELL IN. SHUT DOWN FOR THE NIGHT

PREPARE LOCATION AND TOOLS FOR CHEMICAL CUTTING TUBING TOMORROW. (HIGH WINDS PREVENTED CUTTING TODAY).

CREW TRAVEL HOME

WELL SHUT IN, NO OPERATIONS

Report Start Date: 1/11/2014

Com

WELL SHUT IN, NO OPERATIONS

CREW TRAVEL TO LOCATION

JSA

RIG UP WIRE LINE

CUT TBG W CHEMICAL CUTTER @ 12,045', TBG NOT FREE

FREE POINT (TBG STUCK 10,300')

CUT TBG @ 10,250'

RIG DOWN WIRE LINE



Summary Report

Major Rig Work Over (MRWO)

Fishing

Job Start Date: 1/7/2014

Job End Date: 4/3/2014

Well Name NEW MEXICO 'O' STATE NCT-1 040	Lease New Mexico 'O' State NCT-1	Field Name Vacuum	Business Unit Mid-Continent
Ground Elevation (ft) 3,394.00	Original RKB (ft) 3,419.00	Current RKB Elevation 3,419.00, <elvdttmstart>	Mud Line Elevation (ft) Water Depth (ft)

Com
RIG UP EXPRESS CASING CREW
POOH TBG HANGER, 1-6'X4.5" SUB, 1,4'X4.5" SUB, 1 JT.
CREW TRAVEL HOME
WELL SHUT IN, NO OPERATIONS
Report Start Date: 1/12/2014
Com
WELL SHUT IN, NO OPERATIONS
Report Start Date: 1/13/2014
Com
WELL SHUT IN, NO OPERATIONS
CREW TRAVEL TO LOCATION
JSA
POOH LAYING DOWN 4.5" INJECTION STRING (150 JTS), SHUT WELL IN
CREW TRAVEL HOME
WELL SHUT IN, NO OPERATION
Report Start Date: 1/14/2014
Com
WELL SHUT IN, NO OPERATIONS.
CREW TRAVEL HOME
JSA
POOH LAYING DOWN REMAINING INJECTION TUBING (322 JTS). HEAVY SCALE STARTING 800' +/- ABOVE CUT (9,450' +/-)
CREW TRAVEL HOME
WELL SHUT IN, NO OPERATIONS
Report Start Date: 1/15/2014
Com
WELL SHUT IN, NO OPERATIONS
CREW TRAVEL TO LOCATION
JSA
CHANGE BOP TBG RAMS FROM 4.5" TO 2.875"
TEST BOP W RBP (GOOD TEST)
FORKLIFT MOVED OFF 4.5" TBG FOR EMI INSPECTION, OFFLOAD 2.875" 7.90# PH-6 P-110 WORK STRING 13,300'.
PICK UP AND MAKE UP BHA. 6" FLAT BOTTOM MILL, 4.75" JARS, 4-4.75" DRILL COLLARS, ACCEL, XO.
PICK AND RIH WITH 50 JTS WORK STRING. SHUT WELL IN
CREW TRAVEL HOME
WELL SHUT IN, NO OPERATIONS
Report Start Date: 1/16/2014
Com
WELL SHUT IN, NO OPERATIONS
CREW TRAVEL TO LOCATION
JSA
FINISH RIH W MILL AND BHA, TAG TOP OF FISH @ 10,045'
RIG UP STRIPPER HEAD
RIG UP POWER SWIVEL
REVERSE CIRCULATE WELL BORE CLEAN, SHUT WELL IN
WELL SHUT IN, NO OPERATIONS
Report Start Date: 1/17/2014
Com
WELL SHUT IN
CREW TRAVEL TO LOCATION.
JSA
CIRC WELLBORE (FLUID LEVEL FELL 4000' OVERNIGHT/150 BBL TO LOAD)
DRESS TOP OF FISH (MILLED 6", HEAVY METAL SHAVINGS IN RETURNS)
RD STRIPPER HEAD
RD POWER SWIVEL
POOH, LAYDOWN MILL
ASSEMBLE BHA, START RIH.
CREW TRAVEL HOME.



Summary Report

Major Rig Work Over (MRWO)

Fishing

Job Start Date: 1/7/2014

Job End Date: 4/3/2014

Well Name NEW MEXICO 'O' STATE NCT-1 040		Lease New Mexico 'O' State NCT-1	Field Name Vacuum	Business Unit Mid-Continent	
Ground Elevation (ft) 3,394.00	Original RKB (ft) 3,419.00	Current RKB Elevation 3,419.00, <elvdttmstart>		Mud Line Elevation (ft)	Water Depth (ft)

	Com
WELL SHUT IN, NO OPERATIONS.	
Report Start Date: 1/18/2014	
	Com
WELL SHUT IN, NO OPERATIONS. CREW OFF	
Report Start Date: 1/19/2014	
	Com
WELL SHUT IN, NO OPERATIONS. CREW OFF	
Report Start Date: 1/20/2014	
	Com
no work performed	
crew travel	
review jsa's, check well for pressure, no pressure, check tubing elevators for correct size, and document in dog house	
continue in hole with BHA overshot 5 7/8 x 4 3/4 x 2 5/8, x-over 4 9/16 x 2 1/4, bumper sub 4 13/16 x 2 1/4, x-over 4 3/4 x 2 1/4, jars 4 13/16 x 2 1/4, (4) 4 13/16 x 2 1/4 drill collars, accelerator 4 9/16 x 2 1/4, x-over 4 13/16 x 2 1/4 (total length of BHA is 161.14') and 3 26 jts of workstring, tag fish 10249'	
latch onto fish, tubing weight 72 points going up and 68 points going down, start jarring on fish at 10248', start pulling 40 over and jarred to 50 over, slack off and lay down top joint and hook up kelly hose and attempt to pump down tubing and out cut pipe, took 15 bbls to catch pressure on tubing, good blow out casing, well started circ, pumped 600 bbls, at 3.5 bbls per minute, secure well note: no scale in returns,	
crew travel	
no work performed	
Report Start Date: 1/21/2014	
	Com
WELL SHUT IN, NO ACTIVITY	
CREW TRAVEL TO LOCATION.	
PRE-JOB SAFETY MTG- REVIEW JSAs, TENET #1, HAZARD WHEEL, E-COLORS, MYSPACE 360.	
CHECK WELL PRESSURE - WELL ON VACUUM	
P/U PWR SWVL AND SWAP OUT ELEVATORS.	
UNLATCH F/FISH AND TOO H F/10249' RACKING BACK PH-110 2-7/8" TBG.	
CREW LUNCH, REVIEW JSAs & WELL CONTROL.	
CONT TO TOO H RACKING BACK 163 STNDS PH-110 2-7/8" TBG, AND DCs. L/D BHA REMOVING OVERSHOT BUMPER SUB AND ACCELERATOR.	
SHUT DOWN WELL AND SHUT IN.	
CREW TRAVEL FROM LOCATION	
WELL SHUT IN, NO ACTIVITY.	
Report Start Date: 1/22/2014	
	Com
WELL SHUT IN, NO ACTIVITY	
CREW TRAVEL TO LOCATION	
PRE-JOB SAFETY MTG - REVIEW JSAs, TENET #2, HAZARD ID, E-COLORS, MYSPACE 360, WELL CONTROL, CALIPER ELEVATORS.	
CHECK PRESSURE = 0# PSI / ON SLIGHT VACUUM.	
OFFLOAD AND INSPECT 6" WASHPIPE / HANDLING TOOLS	
VERIFIED CERTIFICATIONS FOR ELEVATORS AND SLIPS.	
MOVE IN AND R/U CSG CREW AND EQUIP.	
P/U BHA:	
XO SUB - 4-9/16" X 2-1/4" - 1.20'	
ACCELERATOR - 4-13/16" X 2-1/4" - 11.52'	
(4) DC - 4-13/16" X 2-1/4" - 30.00'	
(3) DC - 4-13/16" X 2-1/4" - 31.00'	
(2) DC - 4-13/16" X 2-1/4" - 31.85'	
(1) DC - 4-13/16" X 2-1/4" - 31.15'	
JARS - 4-13/16" X 2-1/4" - 12.30'	
TOP SUB BUSHING - 4-9/16" X 6" X 2-5/16" - 2.09'	
(6) 6" WASHPIPE - 6" X 5-1/4" - 31.22'	
(5) 6" WASHPIPE - 6" X 5-1/4" - 31.45'	
(4) 6" WASHPIPE - 6" X 5-1/4" - 32.00'	
(3) 6" WASHPIPE - 6" X 5-1/4" - 30.62'	
(2) 6" WASHPIPE - 6" X 5-1/4" - 31.71'	
(1) 6" WASHPIPE - 6" X 5-1/4" - 31.12'	
6" CUTRITE SHOE - 6" SOD X 5-1/4" SID - 3.28'	
TOTAL LENGTH - 342.51'	
RIH W/ 316 JTS OF 2-7/8" PH-6 TBG WS T/10141'. SECURE WELL AND SHUT DOWN.	



Summary Report

Major Rig Work Over (MRWO)

Fishing

Job Start Date: 1/7/2014

Job End Date: 4/3/2014

Well Name NEW MEXICO 'O' STATE NCT-1 040	Lease New Mexico 'O' State NCT-1	Field Name Vacuum	Business Unit Mid-Continent
Ground Elevation (ft) 3,394.00	Original RKB (ft) 3,419.00	Current RKB Elevation 3,419.00, <elvdttmstart>	Mud Line Elevation (ft) Water Depth (ft)

Com
CREW TRAVEL FROM LOCATION.
WELL SHUT IN, NO ACTIVITY.
Report Start Date: 1/23/2014
Com
WELL SHUT IN, NO OPERATIONS
CREW TRAVEL TO LOCATION
JSA
LOAD WELLBORE WITH 145 BBL WATER (CCR)
WASH DOWN (TOP OF FISH OF 10,250' WASHED DOWN AROUND 4.5" TBG TO 10,438') ****(CCR RATE OF 4 BPM WITH 2 BPM RETURNS, 50% FLUID LOSS INTO WELL).
CREW LUNCH AND REST, VISIT JSA
RIG DOWN STRIPPER HEADS
RIG DOWN POWER SWIVEL
START POOH WITH WORK STING.
HAND OVER TO NIGHT CREW
TOH FROM 10438' TO SURFACE AND LD BHA
XO SUB - 4-9/16" X 2-1/4" - 1.20' ACCELERATOR - 4-13/16" X 2-1/4" - 11.52' (4) DC - 4-13/16" X 2-1/4" - 30.00' (3) DC - 4-13/16" X 2-1/4" - 31.00' (2) DC - 4-13/16" X 2-1/4" - 31.85' (1) DC - 4-13/16" X 2-1/4" - 31.15' JARS - 4-13/16" X 2-1/4" - 12.30' TOP SUB BUSHING - 4-9/16" X 6" X 2-5/16" - 2.09' (6) 6" WASHPIPE - 6" X 5-1/4" - 31.22' (5) 6" WASHPIPE - 6" X 5-1/4" - 31.45' (4) 6" WASHPIPE - 6" X 5-1/4" - 32.00' (3) 6" WASHPIPE - 6" X 5-1/4" - 30.62' (2) 6" WASHPIPE - 6" X 5-1/4" - 31.71' (1) 6" WASHPIPE - 6" X 5-1/4" - 31.12' 6" CUTRITE SHOE - 6" SOD X 5-1/4" SID - 3.28'
TOTAL LENGTH - 342.51'
PU FISHING BHA
Report Start Date: 1/24/2014
Com
CONT TO PU BHA XO SUB - 4-13/16" X 2-1/4" - 1.20' ACCELERATOR - 4-9/16" X 2-1/4" - 11.52' (4) DC - 4-13/16" X 2-1/4" - 30.00' (3) DC - 4-13/16" X 2-1/4" - 31.00' (2) DC - 4-13/16" X 2-1/4" - 31.85' (1) DC - 4-13/16" X 2-1/4" - 31.15' JARS - 4-13/16" X 2-1/4" - 12.30' XO 4-3/4"X2-1/4" - 1.17' BUMPER SUB - 4-13/16X2-1/4 - 6.15' XO - 4-9-16X2-1/4 - 1.20' TOP BUSHING - .97' UPPER EXT. - 5-3/4"X4-3/4"-2.75 O.S. - 5-3/4"X4-3/4"-1.56'
165.23' TOTAL
TIH W/ FISHING BHA TO 4210' W/ 130JTS OF 2 7/8" TUBING
HANDOVER TO DAY CREW
FINISH RIH W WORK STRING TO TOF.
LATCH ON TO FISH @ 10,249'. JAR FISH MULTIPLE TIMES (30K OVER TO 55K OVER).
RIG UP WIRE LINE FOR FREE POINT.
10,330' 100% FREE, 10,430' 90' FREE, 10,450' 70% FREE, 10,600' 50% FREE, 10,800' STUCK.
ESTABLISH CIRCULATION CONVENTIONAL, RETURNS PRODUCED HEAVY SCALE.
RIG UP CUDD ACID PUMP TRUCKS
INSTALL PH-6 P-110 2.875" SUBS.
ESTABLISH CIRCULATION. DOWN TBG, OUT LOWER CUT, AND RETURN UP ANNULUS.



Summary Report

Major Rig Work Over (MRWO)

Fishing

Job Start Date: 1/7/2014

Job End Date: 4/3/2014

Well Name NEW MEXICO 'O' STATE NCT-1 040		Lease New Mexico 'O' State NCT-1	Field Name Vacuum	Business Unit Mid-Continent	
Ground Elevation (ft) 3,394.00	Original RKB (ft) 3,419.00	Current RKB Elevation 3,419.00, <elvdttmstart>		Mud Line Elevation (ft)	Water Depth (ft)

Com

FINISH RIG UP FOR CUDD ACID AND SWAP OUT SUBS ON RIG FLOOR FROM L-80 TO PH-6

CONT ACID JOB
TEST LINES TO 8500PSI
PUMP WATER TILL RETURNS COME BACK CLEAN 1905BBLS
SHUT DOWN
PUMP ACID 84 BBLS
DISPLACE W/ 68BBLS OF FRSH WATER
LET ACID SPEND FOR 4 HRS

JAR ON FISH WHILE PUMPING WATER TO CLEAN UP WELL

Report Start Date: 1/25/2014

Com

RAN OUT OF WATER AND FILLED UP BLOW DOWN TANK, LETTING TRUCKS CATCH UP BEFORE RESUME PUMPING

CONT ACID JOB
TEST LINES TO 8500PSI
PUMP WATER TILL RETURNS COME BACK CLEAN 1905BBLS
SHUT DOWN
PUMP ACID 84 BBLS
DISPLACE W/ 68BBLS OF FRSH WATER
LET ACID SPEND FOR 4 HRS

JAR ON FISH WHILE PUMPING WATER TO CLEAN UP WELL

LET ACID SPENT
RD CUDD
R/U PRO WELL TESTING

CHECK WELL = 0# PSI.

PUMPED 200 BBLS H2O @5 BPM REACHED 400 PSI / PUMPED 60 BBLS H2O DWN TUBING

HELD JSA AND R/U WIRELINE UNIT.

RAN FREE PT TOOL, DISCOVERED OVERSHOT WAS NOT LATCHED ONTO FISH MADE SEVERAL PASSES, TOO H F/10249' AND R/D WIRELINE

CREW REST/LUNCH, REVIEWED JSAs.

SWITCH OUT TOOLS AND BEGIN TOO H F/10249 L/D 2 JTS 2-7/8" PH-6 AND RACKING BACK 162 STANDS OF TBG AND DCs, L/D BHA TO INSPECT THE OVERSHOT AND L/D GRAPPLE.

SAFETY MEETING

MAKE UP FISHING BHA
DETAILS:
X-OVER 4-9/16" X 2-1/4" - 1.20'
ACCELERATOR 4-13/16" X 2-1/4" - 11.52'
DC (4) 4-13/16" X 2-1/4" - 30.0'
DC (3) 4-13/16" X 2-1/4" - 31.0'
DC (2) 4-13/16" X 2-1/4" - 31.85'
DC (1) 4-13/16" X 2-1/4" - 31.15'
JARS 4-13/16" X 2-1/4" - 12.30'
BUMPER SUB 4-13/16" X 2-1/4" - 6.15'
X-OVER 4-9/16" X 2-1/4" - 1.27'
OVERSHOT 5-3/4" X 2-5/16" X 4-3/4" FN - 3.60

TOTAL LENGTH - 160.04'

TIH W/ 327JTS OF 2 7/8" WS FROM SURFACE TO TOP OF FISH @10138'

Report Start Date: 1/26/2014

Com

CONT TIH W/ 2 7/8" WS TO TOP OF FISH @10138'

CREW LUNCH

RIG UP WIRELINE

RIH W/ FREEPOINT TOOL AND DETERMINED TO BE FREE AT 11000' (FROM STRETCH), BEST POINT TO BACK OFF DETERMINED TO BE 10,834'
RIH W/ BACKOFF TOOL AND BACKED OFF @10834'

RIG DOWN WIRELINE

REVIEW JSAs, TENET #6, HAZARD ID,
E-COLORS, MYSPACE 360, WELL CONTROL, CALIPER ELEVATORS

BEGIN POOH W/FISH F/10835'. L/D 2JTS OF 2-7/8" PH6 TBG, RACK BACK 161 STNDS,

CREW LUNCH, REVIEW JSA,



Summary Report

Major Rig Work Over (MRWO)

Fishing

Job Start Date: 1/7/2014

Job End Date: 4/3/2014

Well Name NEW MEXICO 'O' STATE NCT-1 040		Lease New Mexico 'O' State NCT-1	Field Name Vacuum	Business Unit Mid-Continent	
Ground Elevation (ft) 3,394.00	Original RKB (ft) 3,419.00	Current RKB Elevation 3,419.00, <elvdttmstart>		Mud Line Elevation (ft)	Water Depth (ft)

Com

RIG UP CASING CREW EQUIPMENT

CONT. TO POOH, RACK BACK 1 STND THEN L/D BHA AND FISH - 1 PIECE AND 18 JTS OF 4-1/2" TBG = 586.28'
TBG WAS EXTREMELY PITTED W/LARGE AREAS ON SOME JTS OF IPC EXPOSED. LG DIAMETER HOLE IN TBG JT LOCATED @ APPRX. 10675'
TOP OF NEW FISH @ 10835'

MAKE AND PICK UP NEW FISHING BHA: DETAILS:

X-OVER 4-9/16" X 2-1/4" - 1.20'
ACCELERATOR 4-7/16" X 1-15/16" - 9.62'
DC (4) 4-13/16" X 2-1/4" - 30.0'
DC (3) 4-13/16" X 2-1/4" - 31.0'
DC (2) 4-13/16" X 2-1/4" - 31.85'
DC (1) 4-13/16" X 2-1/4" - 31.15'
JARS 4-7/16" X 1-15/16" - 6.70'
TOP BUSHING 4-9/16" X 6" X 2-5/16" - 2.09'
(6) 6" WASHPIPE - 6" X 5-1/4" - 31.22'
(5) 6" WASHPIPE - 6" X 5-1/4" - 31.45'
(4) 6" WASHPIPE - 6" X 5-1/4" - 32.00'
(3) 6" WASHPIPE - 6" X 5-1/4" - 30.62'
(2) 6" WASHPIPE - 6" X 5-1/4" - 31.71'
(1) 6" WASHPIPE - 6" X 5-1/4" - 31.12'
6" CUTRITE SHOE - 6" SOD X 5-1/4" SID - 4.06'

TOTAL LENGTH - 335.79'

SAFETY MEETING AND JSA REVIEW

TIH W/ BHA ON 2 7/8" WS FROM SURFACE TO TOP OF FISH @ 10835'

RIG UP PRO WELL MANIFOLD TO FLOW BACK TANK

CONT TIH TO TOP OF FISH

RU WELL FOAM UNIT AND PU POWER SWIVEL

Report Start Date: 1/27/2014

Com

BREAK CIRC WITH WELL FOAM UNIT

TAG @ 10837', WASH OVER FISH FROM 10835' (TOP OF FISH) TO 11021' WITH FOAM UNIT

REVIEW JSAs, TENET #7, HAZARD ID, E-COLORS, MYSPACE 360, WELL CONTROL, CALIPER ELEVATORS.

CIRCULATE CLEAN AND PUMPED 40 BBLS H2O DWN TBG TO KILL WELL.

L/D 1 JT 2-7/8" PH6 TBG R/D PWR SWVL AND REMOVE STRIPPER HEAD.

BEGIN TO TOH AND RACK BACK 44 STNDS (88 JTS) OF 2-7/8 PH6 TBG.

CREW LUNCH AND JSA REVIEW.

CONT. TOH W/RACKING BACK REMAINING 128 STNDS (256 JTS) OF 2-7/8" PH6 TBG.

L/D BHA AND P/U TOOLS.

P/U BHA.

DETAILS:

X-OVER 4-9/16" X 2-1/4" - 1.20'
DC (4) 4-13/16" X 2-1/4" - 30.0'
DC (3) 4-13/16" X 2-1/4" - 31.0'
DC (2) 4-13/16" X 2-1/4" - 31.85'
DC (1) 4-13/16" X 2-1/4" - 31.15'
ACCELERATOR 4-7/16" X 1-15/16" - 9.62"
JARS 4-7/16" X 1-15/16" - 6.70'
X-OVER 3-1/2" FHP X 3-1/2" IFB" - 1.27'
BUMPER SUB 4-13/16" X 2-1/4" - 6.15'
X-OVER 4-3/4" X 2-1/4" - 1.21'
OVERSHOT 5-3/4" X 5-1/8" X 3-5/8" FN - 3.85' (P/U 5-3/4" OS W/4-3/4" SPIRAL GRAPPLE & CONTROL W/STOP.)

TOTAL LENGTH - 154'

NO WEAR ON SHOE

RIH W/10 STNDS (20 JTS) OF 2-7/8" PH6 T/791.38. CREW CHANGE

SAFETY MEETING AND JSA REVIEW

TIH FROM 791.38 TO 10835' W/ CURRENT BHA ON 2 7/8" WS TO LATCH ONTO FISH

TIE BACK DRILL LINE TO DEAD MAN, WATER LINES TO COOL BRAKES ON RIG FROZE.

Report Start Date: 1/28/2014



Summary Report

Major Rig Work Over (MRWO)

Fishing

Job Start Date: 1/7/2014

Job End Date: 4/3/2014

Well Name NEW MEXICO 'O' STATE NCT-1 040		Lease New Mexico 'O' State NCT-1	Field Name Vacuum	Business Unit Mid-Continent	
Ground Elevation (ft) 3,394.00	Original RKB (ft) 3,419.00	Current RKB Elevation 3,419.00, <elvdttmstart>		Mud Line Elevation (ft)	Water Depth (ft)

Com

CONT TO TIH TO 10,835' 172STDS(344JTS)
TAG FISH 12' HIGH @10833', CANNOT LATCH ONTO FISH, IT WAS DETERMEND THAT THE GRAPPLE MAY BE TO LARGE AND SMALLER GRAPPLE WILL BE NEEDED TO RETRIEVE FISH

TOOH W/ 2 7/8" WS AND BHA SAME, TEMPERATURE DROPPED TO 11DEG WITH A WIND CHILL OF -5, WORK IN 30MIN INTERVALS

REVIEW JSAs, TENET #8, HAZARD ID, E-COLORS, MYSPACE 360, WELL CONTROL, CALIPER ELEVATORS

CONT TO TOH W/2-7/8" PH6 WS F/8699' RACKING BACK 139 STNDS (278 JTS) AND L/D BHA.

CREW REST TO WARM UP/ REVIEW JSAs

EXTREME COLD TEMP / 10 deg

CONT TOOH RACKING BACK REMAINING STNDS.

L/D DCs (4) AND BHA.

CREW LUNCH / REVIEW JSAs

P/U BHA.

DETAILS:

X-OVER 4-9/16" X 2-1/4" - 1.20'

DC (4) 4-13/16" X 2-1/4" - 30.0'

DC (3) 4-13/16" X 2-1/4" - 31.0'

DC (2) 4-13/16" X 2-1/4" - 31.85'

DC (1) 4-13/16" X 2-1/4" - 31.15

ACCELERATOR 4-7/16" X 1-15/16" - 9.62"

JARS 4-7/16" X 1-15/16" - 6.70'

X-OVER 3-1/2" FHP X 3-1/2" IFB" - 1.27'

BUMPER SUB 4-13/16" X 2-1/4" - 6.15'

X-OVER 4-3/4" X 2-1/4" - 1.21'

OVERSHOT 5-3/4" X 5-1/8" X 3-5/8" FN - 3.85' (P/U 5-3/4" OS W/4-5/8" SPIRAL GRAPPLE & CONTROL W/STOP.)

TOTAL LENGTH - 154'

TIH W/BHA AND 172 STNDS (344 JTS) 2-7/8" PH6 TBG.

CREW REST TO WARM UP/ REVIEW JSAs

EXTREME COLD TEMP / 29 deg

CONT RIH W/REMAINING 80 STNDS (160 JTS) OF 2-7/8" PH6 WS T/10833'

REVIEW JSAs, TENET #8, HAZARD ID, E-COLORS, MYSPACE 360, WELL CONTROL, CALIPER ELEVATORS

CONT TO TIH TO @10833'

ATTEMPT TO LATCH ONTO FISH BUT FAILED, PICK UP 10 TO 12 POINTS OVER AND LOOSE FISH, MADE AN ATTEMPT TO MILL ON FISH W/ GRAPPLE ASS. BUT HAD NO CHANGE WHEN TRYING TO LATCH UP AGAIN

TOH W/ BHA TO PICK UP SMALLER 4 1/2" GRAPPLE TO RETREIVE FISH

Report Start Date: 1/29/2014

Com

CONT TOH W/ 344 JTS OF 2 7/8" WS TO LD 4 5/8" GRAPPLE

BREAKOUT OVERSHOT TO CHANGE OUT GRAPPLE, (OVERSHOT WOULD NOT COME APART/WAIT ON NEW OVERSHOT TO BE BROUGHT OUT)

CREW CHANGE OUT AND PTSM - REVIEW JSAs, TENET #9, HAZARD ID, E-COLORS, MYSPACE 360, WELL CONTROL, CALIPER ELEVATORS.

MAKE UP BHA:

DETAILS:

X-OVER 4-9/16" X 2-1/4" - 1.20'

DC (4) 4-13/16" X 2-1/4" - 30.0'

DC (3) 4-13/16" X 2-1/4" - 31.0'

DC (2) 4-13/16" X 2-1/4" - 31.85'

DC (1) 4-13/16" X 2-1/4" - 31.15

ACCELERATOR 4-7/16" X 1-15/16" - 9.62"

JARS 4-7/16" X 1-15/16" - 6.70'

X-OVER 3-1/2" FHP X 3-1/2" IFB" - 1.27'

BUMPER SUB 4-13/16" X 2-1/4" - 6.15'

X-OVER 4-3/4" X 2-1/4" - 1.21'

OVERSHOT 5-3/4" X 5-1/8" X 3-5/8" FN - 3.85' (P/U 5-3/4" OS W/4-1/2" SPIRAL GRAPPLE.)

TTL - 154'

TIH W/BHA/2-7/8" PH6 WS / (2) 6' SUBS / (1) 4' SUB TO SPACE OUT AND ATTEMPT TO ENGAGE FISH @ 10833'

ATTEMPT TO ENGAGE FISH - UNSUCCESSFUL

BEGIN TO TOH W/WS, RACKED BACK 60 STNDS (120 JTS). OVERSHOT @7225'. CREW CHANGE.

SAFETY MEETING AND JSA REVIEW

TOOH FROM 7225' TO SURFACE, 112 STDS, TO LDFISHING BHA

R/U WIRELINE



Summary Report

Major Rig Work Over (MRWO)

Fishing

Job Start Date: 1/7/2014

Job End Date: 4/3/2014

Well Name NEW MEXICO 'O' STATE NCT-1 040	Lease New Mexico 'O' State NCT-1	Field Name Vacuum	Business Unit Mid-Continent
Ground Elevation (ft) 3,394.00	Original RKB (ft) 3,419.00	Current RKB Elevation 3,419.00, <elvdttmstart>	Mud Line Elevation (ft) Water Depth (ft)

Com

RIH WITH 3 5/8" JET CUTTER TO CUT 4 1/2" TUBING @11007'

Report Start Date: 1/30/2014

Com

RIH W/ JET CUTTER ON WIRELINE TO CUT 4 1/2" TUBING @11007', FIRST ATTEMPT FAILED DUE TO BLASTING CAP FAILURE, POOH TO FIX CUTTER, SECOND ATTEMPT FAILED TO FIRE, THIRD ATTEMPT SUCCESSFUL, WHILE ABSERVING CCL GIH IT WAS DETERMINED THAT 7" CSG IS POSSIBLY BAD FROM 10,000' DOWN, WHEN TRYING TO READ FOR THE CUT W/ THE CCL WE COULD NOT GET BELOW THE CUT, POSSIBLE FILL OR PIPE SHIFT NOT ALLOWING THE TOOL TO PASS LOWER THAT 11007'

RIG DOWN WIRELINE

PU BHA
X-OVER 4-9/16" X 2-1/4" - 1.20'
ACCELERATOR 4-7/16" X 1-15/16" - 9.62'
DC (4) 4-13/16" X 2-1/4" - 30.0'
DC (3) 4-13/16" X 2-1/4" - 31.0'
DC (2) 4-13/16" X 2-1/4" - 31.85'
DC (1) 4-13/16" X 2-1/4" - 31.15'
JARS 4-7/16" X 1-15/16" - 6.70'
X-OVER 3-1/2" FHP X 3-1/2" IFB" - 1.27'
BUMPER SUB 4-13/16" X 2-1/4" - 6.15'
X-OVER 4-3/4" X 2-1/4" - 1.21'
X-OVER 4-9/16"X2-5/16"-1.07'
X-OVER 4-1/4"X1"-1.13'
BIT SUB 3-1/8"X1-1/2"-2.01'
SPEAR STOP 5-1/4"X1"-1.19'
SPEAR 3-1/4"X1"-2.03'

RIH

TAG FISH (79K PULL WEIGHT), STING INTO FISH (82K PULL WEIGHT).

CREW SHUT DOWN FOR LUNCH AND REST

POOH STANDING BACK WORKSTRING

LD BHA SAME AND RU CSG CREW TO BREAK OUT 174' OF 4 1/2" TUBING, TUBING IS VERY PITTED W/ SOME HOLES, FLARED END FROM JET CUTTER MEASURING 5 1/2"

SAFETY MEETING/JSA REVIEW AND HADOVER

CONT TO LD 4 1/2" TB W/ CSG CREW

PU BHA AND TIH TO TOP OF FISH @11007' WITH 2 7/8" WS
X-OVER 4-9/16" X 2-1/4" - 1.20'
ACCELERATOR 4-7/16" X 2-1/4" - 9.62'
DC (4) 4-13/16" X 2-1/4" - 30.0'
DC (3) 4-13/16" X 2-1/4" - 31.0'
DC (2) 4-13/16" X 2-1/4" - 31.85'
DC (1) 4-13/16" X 2-1/4" - 31.15'
JARS 4-7/16"X1-5/16"-6.70'
DRESS OFF MIL-2.75'
(6) 6" WASHPIPE - 6" X 5-1/4" - 31.22'
(5) 6" WASHPIPE - 6" X 5-1/4" - 31.45'
(4) 6" WASHPIPE - 6" X 5-1/4" - 32.00'
(3) 6" WASHPIPE - 6" X 5-1/4" - 30.62'
(2) 6" WASHPIPE - 6" X 5-1/4" - 31.71'
(1) 6" WASHPIPE - 6" X 5-1/4" - 31.12'
6" CUTRITE SHOE - 6" SOD X SID - 3.05'

TOTAL LENGTH - 335.44'

KB-15'

TOTAL-350.44

TIH W/ 2 7/8" WS TO TOP OF FISH @11007'

Report Start Date: 1/31/2014

Com

TIH W/ SAME BHA ON 2 7/8" WS TO WASH OVER FISH

SHUTDOWN FOR CREW REST AND LUNCH, WIND PICKED UP SO WAITED FOR WIND TO DIE DOWN

RU POWER SWIVEL/STRIPPER HEAD

ATTEMPT TO BREAK CIRC. W/ AIR FOAM UNIT

RIG DOWN POWER SWIVEL

RIG DOWN STRIPPER HEAD

START POOH, SHUT DOWN DUE TO HIGH WINDS

SHUT DOWN FOR 2 HOURS DUE TO HIGH WINDS. WENT OVER SAFETY SCENARIOS AND HAZARDS HUNTS.



Summary Report

Major Rig Work Over (MRWO)

Fishing

Job Start Date: 1/7/2014

Job End Date: 4/3/2014

Well Name NEW MEXICO 'O' STATE NCT-1 040	Lease New Mexico 'O' State NCT-1	Field Name Vacuum	Business Unit Mid-Continent
Ground Elevation (ft) 3,394.00	Original RKB (ft) 3,419.00	Current RKB Elevation 3,419.00, <elvdttmstart>	Mud Line Elevation (ft) Water Depth (ft)

Com
CONTINUE PULL OUT OF THE WELL.
CREW TRAVEL HOME
NO OPERATIONS, CREWS OFF TILL MONDAY FOR REST.
Report Start Date: 2/1/2014
Com
WELL SHUT IN FOR CREWS WEEK END OFF
Report Start Date: 2/2/2014
Com
WELL SHUT IN FOR CREWS WEEK END OFF
Report Start Date: 2/3/2014
Com
WELL SHUT IN, NO OPERATIONS
CREW TRAVEL TO LOCATION
JSA
CREW STAND BY FOR ICE TO THAW FROM DERRICK. TEMPERATURE DID NOT RISE. RELEASE CREW FOR THE DAY.
CREW TRAVEL HOME
WELL SHUT IN, NO OPERATIONS
Report Start Date: 2/4/2014
Com
WELL SHUT IN, NO ACTIVITY DUE TO INCLIMATE WINTER WEATHER (ICE).
DAY CREW TRAVEL TO LOCATION
JSA
WAIT TIME FOR CLOUDS TO BURN OFF AND TEMPERATURE TO RISE AND MELT ICE OFF DERRICK.
JSA-INSPECT DERRICK FOR ICE, AND POOH OPERATIONS.
POOH
LAID DOWN FISH BHA
PU & SET PKR, EXCHANGE 2.875" TBG RAMS WITH 2.375", TEST TBG RAMS WITH PEAK RBP. 500 PSI - GOOD TEST, LD PKR
TIH W/ 37JTS 2.373" TBG & MS
PU & SET PKR, EXCHANGE 2.375" TBG RAMS WITH 2.875", TEST TBG RAMS WITH PEAK RBP. 500 PSI - GOOD TEST, LD PKR
TIH W/ 2.875" WS, SECURE WELL
SAFETY MEETING/JSA REVIEW AND HADOVER
TIH W/ TAPERED WS TO 5,500'
MU STRIPPER RUBBER, RU FOAM AIR UNIT, INST CHECK VALVE
PUMP W/ FOAM UNIT TO BREAK CIRCULATION, CIRC BU
TIH W/ TAPERED WS
Report Start Date: 2/5/2014
Com
TIH W/ TAPERED WS, STOP @ 12,930'
RU STRIPPER HEAD
RIG UP POWER SWIVEL.
FOAM AIR UNIT ATTEMPT TO BREAK CIRCULATION W/ FOAM UNIT.
SAFETY MEETING/JSA REVIEW AND HADOVER
FLOW BACK MANIFOLD FROZE SOLID DUE TO TEMPERATURE BEING 25 DEG F. PRO WIRELINE FLOW BACK DELIVERED REPLACEMENT MANIFOLD.
BROKE CIRCULATION WITH WELLFOAM AIR UNIT.
WASH SCALE OUT OF 4.5" TUBING WHILE ROTATING AND CC WITH FOAM AIR UNIT.
CIRCULATE BOTTOMS UP WITH FOAM AIR UNIT.
RIG UP PETROPLEX ACID CREW.
PUMPED 1,000 GALLON 15% HCL ACID (8GAL/1MGAL HIGH TEMPERATURE CORROSION INHIBITOR). SPOTTED ACID FROM 12,045' TO 10,980'.
RIG DOWN ACID CREW.
START POOH WITH WORK STRING. (LAID DOWN 11 JTS 2.875", STOOD BACK 15 STANDS 2.875" EOT 10,762') 316 JTS TBG LEFT IN WELL.
HAND OVER TO NIGHT CREW, SAFETY MEETING/JSA REVIEW AND HADOVER
TOH W/ TAPERED WS TIKING PERIODIC BREAKS FOR CREW DUE TO COLD WEATHER
Report Start Date: 2/6/2014
Com
SET PKR, SWAP 2.875" RAMS FOR 2.375" & PT SAME, PT GOOD
PULL PKR & TOH WHILE LD 2.375" TBG



Summary Report

Major Rig Work Over (MRWO)

Fishing

Job Start Date: 1/7/2014

Job End Date: 4/3/2014

Well Name NEW MEXICO 'O' STATE NCT-1 040	Lease New Mexico 'O' State NCT-1	Field Name Vacuum	Business Unit Mid-Continent
Ground Elevation (ft) 3,394.00	Original RKB (ft) 3,419.00	Current RKB Elevation 3,419.00, <elvdttmstart>	Mud Line Elevation (ft) Water Depth (ft)

Com

INSTALL RBP AT SURFACE.

TEST BLINDS TO 500 PSI (GOOD)

SWAP RAMS FROM 2.375" TO 2.875".

TEST RAMS TO 500 PSI (GOOD)

RETRIEVE RBP.

START TIH W/ FISHING ASSY (SPEAR, STOP, SUB XO,XO, BUMPER, JARS, 4EA 4.75" DRILL COLLARS, ACCELERATOR & XO)

HAND OVER FROM NIGHT TOUR TO DAY TOUR.

JSA RIH/FISH OPR.

CONTINUE RIH. TIE BACK TBG LINE.

SHUT DOWN FOR LUNCH AND CREW REST.

TBG WEIGHT UP (74K), TBG WEIGHT DOWN (68K). SIT DOWN ON FISH WITH 4 PTS. SPEAR INTO FISH 11,007' (BHA AND 350 JTS TBG), PULL INTO FISH. START JARRING AT 120K WORKING UP IN JAR WEIGHT TO 175K. WEIGHT RELEASED ON LAST JAR AT 175K THEN DROPPED TO 86K (12K HEAVY) PULLING UP. SET SLIPS TO BREAK OFF TBG, LOST 12K FROM STRING (BACK TO OWIR). GO DOWN TO ATTEMPT TO TAG OR SPEAR. UNABLE TO PICK UP ANY MORE WEIGHT.

START POOH, STANDING BACK WORK STRING IN THE DERRICK. (PUMP 60 BBL FRESH WATER DOWN 2.875" ANNULUS WHILE POOH, BROKE CIRCULATION WITH 60 BBL. HAVENT BEEN ABLE TO CIRC WELL WITH WATER SINCE JAN 23 2014 / 14 DAYS). 290 JTS LEFT IN HOLE, SPEAR DEPTH 9,140'.

WHILE CHANGING TO DOUBLE LINE PULL, TBG LINE WAS PINCHED 2' FROM THE END. SLIP AND CUT 2' OFF.

HAND OVER FROM DAY TOUR TO NIGHT TOUR.

CONTINUE REPAIRS TO TBG LINE (SLIP & CUT)

TOH W/ FISHING ASSY

Report Start Date: 2/7/2014

Com

TOH W/ FISHING ASSY

LD FISHING BHA, REMOVE SPEAR FROM 4.5"

RU CSG CREW, TOH & LD 4.5" CSG, RECOVERED 20' SECTION, 2JTS & 4.5' SECTION, RD CSG CREW

RU CSG CREW TO RUN WASHPIPE, START TIH W/ WASHPIPE ASSY (6" SOD & SID SHOE W/ CUTRITE ON LIP, 6JTS 6" WASHPIPE, DRESS OFF MILL SUB, JARS, 4JTS DC, ACC SUB & XO)

HANDOVER TO DAY CREW

JSA

KEY REPLACED DRILL LINE, KEY POLICY IS TO CHANGE OUT DRILL LINE WITH NEW LINE WHEN LINE HAS 6 MONTHS OF EXPOSURE.

RESUME RUNNING IN THE WELL. (170 JTS 2.875", 5,693') (FLUID LEVEL OF 150').

DISPLACE WELL BORE WITH FOAM AIR.

BOP STARTED LEAKING HYDRAULIC FLUID, LEAK ON BLIND RAMS. SHUT WELL IN, BLOW DOWN FOAM AIR.

REPAIR BOPE

HAND OVER TO NIGHT TOUR.

BREAK CIRCULATION & CIRC BU

TIH W/ WASHPIPE ASSY TO 11,095'

PU POWER SWIVEL, BREAK CIRCULATION W/ FOAM UNIT

Report Start Date: 2/8/2014

Com

BREAK CIRC W/ FOAM UNIT

WASH OVER FISH, TAG TOF 11,283' (W/ DRESS MILL @ 11,095')

DRESS TOP OF FISH 3' (11,095'-11,908')

NEW TOF 11,908'.

CIRCULATE CLEAN WITH FOAM AIR UNIT

LAID DOWN POWER SWIVEL.

LD 7JTS, START TOH W/ WASHPIPE ASSY

HANDOVER W/ DAY TOUR

JSA

POOH STANDING BACK WORK STRING.

BREAK AND LAY DOWN BHA, EXPRESS SERVICES CSG CREW BROKE WASH PIPE.

RIG UP ROTARY WIRELINE.

RIH W/ SINKER BARS, TAGGED @ 11,269', POOH. **TOP OF FISH @ 11,098', TAGGED FILL BRIDGE OFF AREA @ 11,269'.

RIG DOWN ROTARY WIRE LINE.

PICK UP AND MAKE UP FISH BHA, SPEAR, STOP, BIT SUB, XO, XO, BUMPER SUB, XO, JARS, 4 DRILL COLLARS, ACCEL, XO, TBG.

START RIH W 2.875" WORK STRING. XX STANDS



Summary Report

Major Rig Work Over (MRWO)

Fishing

Job Start Date: 1/7/2014

Job End Date: 4/3/2014

Well Name NEW MEXICO 'O' STATE NCT-1 040		Lease New Mexico 'O' State NCT-1	Field Name Vacuum	Business Unit Mid-Continent	
Ground Elevation (ft) 3,394.00	Original RKB (ft) 3,419.00	Current RKB Elevation 3,419.00, <elvdttmstart>		Mud Line Elevation (ft)	Water Depth (ft)

Com

HAND OVER TO NIGHT TOUR, PJSM FOR THE NIGHTS OPERATIONS

TIH W/ FISHING BHA

TAG TOF @ 11,095', STRING WT 70K, SET SPEAR & PU TO 85K TO CONFIRM SPEAR ENGAGEMENT, SET JARS W/ 20K & PU TO ACTIVATE JARS TO 100K, 110K, 120K, 130K UNABLE TO ACTIVATE JARS (KEY RIG PUSHER IS ON LOCATION)

Report Start Date: 2/9/2014

Com

STRING WT 70K PU WT 74K, SET JARS W/ 20K & PU TO ACTIVATE JARS TO 100K, 110K, 120K, 130K UNABLE TO ACTIVATE JARS, CONTINUE PROCESS (KEY RIG PUSHER IS ON LOCATION), JARS ATIVATED @ 140K, JAR FISH 32 LICKS, LOST WT, WT SHOWING 80K, LD TOP JT & PU, WT SHOWING 74K, PU JT & ATTEMPT TO SPEAR FISH, WAS ABLE TO RESPEAR FISH BUT FISH RELEASES @ 85K

START POOH

HANDOVER W/ DAY TOUR

JSA

POOH

BRK DWN BHA, LAID DOWN. ALL BHA.

LAID DOWN FISH, 25' STUB (W SPEAR IN IT), 8 JTS, 20' STUB. (HEAVY PITTING AND LARGE HOLES IN TBG, TBG PLUGGED WITH PLASTIC AND SCALE, RECOVERED 303.94, NEW TOF 11,402', 643' LEFT TO RECOVER TO NEXT FISH)(BROKE OUT FISH WITH EXPRESS CSG CREW)

BRK LUNCH

MAKE UP WASH PIPE/DRESSER MILL BUSHING (EXPRESS CSG CREW),

XO- 4 9/16"X2 1/4"X1.20'

JOHNSON ACCEL 4 1/4"X1 11/16"X9.65'

4 DRILL COLLARS 4 3/4"X2 1/4"X124.00'

4 3/4" SLB JARS 4 3/4"X2 11/16"X12.47'

BUSHING/DRESS MILL 6"X1"X2.75'

8 JTS 6" WASH PIPE 6"X5 1/2"X251.40'

1 6" SHOE 6"X5 1/2"X4.06', (BHA 405.53')

RIH W 2.875" WORK STRING, STOPPED AT 6,000'

RIG UP STRIPPER HEAD

BREAK CIRCULATION WITH FOAM AIR UNIT.

CONTINUE RIH

HAND OVER TO NIGHT TOUR

TIH W/ WASHPIPE ASSY, TAGGED HIGH @ 11,353', PU WT 72K

RU PS & BREAK CIRCULATION WITH FOAM UNIT ABOVE FISH

STARTED ROTATING PIPE, MADE 5' PAST TOF, PS TQ UP & WOULD NOT ROTATE, ATTEMPT TO WORK PIPE WITH NO PROGRESS, GAINED 8PTS ON PU WT & 300PSI CIRCULATING PRESSURE, LD TOP JT & CONFIRMED PU, KILL TBG, LD PS

TOH W/ WASHPIPE ASSY, WT INDICATORS SHOWS WE'RE DRAGGING 6PTS

Report Start Date: 2/10/2014

Com

TOH W/ WASHPIPE ASSY, WT INDICATORS SHOWS WE'RE DRAGGING 6PTS, FOG CAME IN & ICED OVER THE TBG BOARD & DERRICK MAKING IT HAZARDOUS TO CONTINUE.

TEMPRATURES TO REMAIN IN THE MID 20'S FOR REST OF THE EVENING, RELEASED CREW, CREW TRAVEL FROM LOCATION

WELL SHUT IN DUE TO WEATHER NO ACTIVITY

HAND OVER

JSA

STAND BY FOR THREE HOURS TO SEE IF THE WEATHER CLEARED. WEATHER DIDNT IMPROVE. RELEASED ALL SERVIES FOR THE DAY.

NO ACTIVITIES, WELL SHUT IN

PJSM FOR THE NIGHTS OPERATIONS AND DEALING WITH ADVERSE WEATHER CONDITIONS

INSPECTED DERRICK BEFORE BEGINING OPERATIONS, 1/4" ICE ON TBG BOARD & 1/2" OR THICKER ABOVE, SHUT DOWN OPERATIONS. TBG ON VACUUM & ANNULUS DEAD

NO ACTIVITIES, WELL SHUT IN

ICE IN DERRICK

Report Start Date: 2/11/2014

Com

WELL SHUT IN, NO OPERATIONS FOR NIGHT CREW (ICE IN THE DERRICK).

WELL SHUT IN, NO OPERATIONS FOR DAY CREW (ICE IN THE DERRICK).

PJSM FOR THE DAYS OPERATIONS

TOH W/ WASHPIPE ASSY TIED BACK TO REDUCE SPEED, DRAG WT REDUCED TO 2PTS

LD FISHING BHA

Report Start Date: 2/12/2014



Summary Report

Major Rig Work Over (MRWO)

Fishing

Job Start Date: 1/7/2014

Job End Date: 4/3/2014

Well Name NEW MEXICO 'O' STATE NCT-1 040		Lease New Mexico 'O' State NCT-1	Field Name Vacuum	Business Unit Mid-Continent	
Ground Elevation (ft) 3,394.00	Original RKB (ft) 3,419.00	Current RKB Elevation 3,419.00, <elvdttmstart>		Mud Line Elevation (ft)	Water Depth (ft)

Com

LD 8JTS WASHPIPE, NO FISH & NO NOTICEABLE DAMAGE TO SHOE, CONFER W/ ENGINEER TO RUN SAME ASSY W/ 6JTS OF WP

MAKE UP WASH PIPE/DRESSER MILL BUSHING (EXPRESS CSG CREW),

XO- 4 9/16"X2 1/4"X1.20'

JOHNSON ACCE,L 4 1/4"X1 11/16"X9.65'

4 DRILL COLLAR,S 4 3/4"X2 1/4"X124.00'

4 1/4" SLB JARS, DRESS FF MILL & 6" SOD/SID SHOE W/ CUTRITE

UNABLE TO TRIP PIPE FROM DERRICK DUE TO ICE ACCUMULATION, PU 30JTS FROM PIPE RACKS AS KS

NO OPERATIONS DUE TO ICE ACCUMULATION ON DERRICK.

HAND OVER TO DAY CREW.

JSA

LAID DOWN 2.875" KILL STRING ON THE RACK.

BROKE AND LAID DOWN FISH BHA.

RIG UP EXPRESS CASING CREW.

PICKED UP AND INSTALLED 5'X6" SHOE WITH CUTRITE FACE, 6 JTS 6" WASH PIPE, BUSHING WITH DRESS OFF MILL ON BOTTOM, XO- 4 9/16"X2 1/4"X1.20'

JOHNSON ACCE,L 4 1/4"X1 11/16"X9.65'

4 DRILL COLLAR,S 4 3/4"X2 1/4"X124.00'

4 1/4" SLB JARS, DRESS FF MILL & 6" SOD/SID SHOE W/ CUTRITE (BHA 342.25', BHA+KBC+CHECK VALVES=359.25')

LUNCH BREAK

RIH WITH 5,760' 2.875" WORK STRING

DISPLACE WELLBORE FLUID WITH FOAM AIR. 1100 SCF AT 1,700 PSI.

CONTINUE RIH W WORK STRING.

HAND OVER TO NIGHT CREW

PJSM WITH CREW TO COVER THE NIGHTS OPERATIONS

TIH W/ WASHPIPE ASSY TO JT 351, 11,227'

PU PS & JT 352, BREAK CIRCULATION W/ FOAM AIR UNIT

WASH DOWN FROM 11,227' TO 11,351', STARTED TAKING WT @ 11,351', STILL ABLE TO MAKE HOLE

Report Start Date: 2/13/2014

Com

CONTINUE TO WORK DOWN WASHPIPE, TAGGED TOF @ 11,391' (tagged 8' high) +/- W/ WASHPIPE, AVG TQ 1,800-2,100PSI DURING WASDOWN, WASH PIPE DEPTH TO 11588'

start milling on top of fish at 11391 cut to 11396(TOP OF NEW FISH) (MILLED 5 ft)

kill foam with 60 bbl fresh water

lay down power swevel , CHANGE OUT TUBING ELEBVATORS AND CHECK FOR CORRECT SIZE AND DOCUMENT IN DOGHOUSE, start out of hole with 5'X6" SHOE WITH CUTRITE FACE, 6 JTS 6" WASH PIPE, BUSHING WITH DRESS OFF MILL ON BOTTOM, XO- 4 9/16"X2 1/4"X1.20'

JOHNSON ACCE,L 4 1/4"X1 11/16"X9.65'

4 DRILL COLLAR,S 4 3/4"X2 1/4"X124.00'

4 1/4" SLB JARS, DRESS FF MILL & 6" SOD/SID SHOE W/ CUTRITE (BHA 342.25', BHA+KBC+CHECK VALVES=359.25') on363 ph p100 tubing 363 jts

(NOTE: didn't see any drag coming off bottom)

PJSM WITH CREW FOR THE NIGHTS OPERATIONS, HANDOVER FROM DAY TOUR

CONTINUE TOH W/ WASHPIPE ASSY

LD WASPIPE ASSY BHA, DRESS OFF MILL HAD MINIMAL SIGNS OF WEAR, SHOE HAS VIRTUALLY NO WEAR VISABLE & CUTRITE STILL GOOD

PU FISHING BHA, SPEAR, STOP SUB, BIT SUB, XO, XO BUMPER SUB, XO, JARS, 4EA 4-3/4" DC, ACCELERATOR, & XO

TIH W FISHING / SPEAR ASSY

Report Start Date: 2/14/2014

Com

TIH W FISHING / SPEAR ASSY

PU JT# 363 FROM CATWALK, PU WT 68K, TAG TOF @ 11,390', STACK 10PTS ON TBG, PU TO 105K & FIS BROKE FREE, PU WT 76K

TOH W/ FISHING ASSY, SHOWING 8PTS OVER STRING WT

HAND OVER

JSA

POOH STANDING BACK WORK STRING IN THE DERRICK.

BROKE DOWN AND LAID DOWN BHA. RECOVERED 1-4' STUB, 2 JTS, 1 4' STUB (ALL 4.5" TBG, TBG QUALITY APPEARS TO BE BETTER). NEW TOF 11,461'

LUNCH BREAK FOR CREW

JSA



Summary Report

Major Rig Work Over (MRWO)

Fishing

Job Start Date: 1/7/2014

Job End Date: 4/3/2014

Well Name NEW MEXICO 'O' STATE NCT-1 040		Lease New Mexico 'O' State NCT-1	Field Name Vacuum	Business Unit Mid-Continent	
Ground Elevation (ft) 3,394.00	Original RKB (ft) 3,419.00	Current RKB Elevation 3,419.00, <elvdttmstart>		Mud Line Elevation (ft)	Water Depth (ft)

Com					
PICK UP AND MAKE UP SPEAR BHA, 3."X1"X6' SPEAR 3 1/8"X1"X1.19' XO 3 1/8"X1 11/16"X6.87' DRILL COLLAR (SPEAR EXTENSION) 3 1/8"X1"X.93' XO 3 1/8"X1"1.19 STOP 3 1/8"X1.5"X5.2' BIT SUB 4 1/4"X1X1.13' 4 9/16"X2.313"X1.21' XO 4 3/4"X2.250"X6.15' BUMPER SUB 3 1/2"X2 1/4"X1.27' XO 4 7/16"X1.938"X12.47' JARS 4-4 13/16"X2.25"X124' DRILL COLLARS 4 9/16"X2.250"X9.65' ACCEL 3.5"X2.25"X1.20' XO 2.875" P-110 PH-5 TUBING WORK STRING					
START RIH WITH WORK STRING.					
CREW HANDOVER, PJSM WITH CREW FOR THE NIGHTS OPERATIONS					
TIH W/ FISHING ASSY					
INSTALL LINE WT INDICATOR, TAG FISH @ 11,465', STAB INTO FISH W/ 10K STACK OUT, ATTEMPT TO TURN PIPE & RELEASE ON OFF TOOL, PU & ACTIVATE JARS, SPEAR SLIPPED FROM FISH, STACK OUT 10K ON FISH, JAR FISH					
Report Start Date: 2/15/2014					
Com					
ATTEMPT TO TURN PIPE & RELEASE ON OFF TOOL SECOND TIME, PU & ACTIVATE JARS, SPEAR SLIPPED FROM FISH, STACK OUT 10K ON FISH, JAR FISH, SPEAR WOULD NOT STAY LATCHED IN FISH CONTINUOUSLY PULLING OUT					
TOH W/ FISHING ASSY					
LD FISHING BHA					
REDRESS SPEAR W/ NEW GRAPPLE, MU FISHING ASSY, TIH W/ 20 STANDS KS, SECURE WELL & SD FOR WEEKEND					
CREW TRAVEL FROM LOCATION					
WELL SHUT IN, NO OPERATION FOR REMAINING WEEK END.					
Report Start Date: 2/16/2014					
Com					
WELL SHUT IN NO ACTIVITY					
Report Start Date: 2/17/2014					
Com					
WELL SHUT IN, NO OPERATIONS					
CREW TRAVEL TO LOCATION					
JSA					
LAID DOWN BHA					
R&R SPEAR GRAPPLE FROM 3.947" TO 4.010"					
PICK UP AND MAKE UP SPEAR BHA, 3."X1"X6' SPEAR (4.010" SPEAR GRAP) 3 1/8"X1"X1.19' XO 3 1/8"X1 11/16"X6.87' DRILL COLLAR (SPEAR EXTENSION) 3 1/8"X1"X.93' XO 3 1/8"X1"1.19 STOP 3 1/8"X1.5"X5.2' BIT SUB 4 1/4"X1X1.13' 4 9/16"X2.313"X1.21' XO 4 3/4"X2.250"X6.15' BUMPER SUB 3 1/2"X2 1/4"X1.27' XO 4 7/16"X1.938"X12.47' JARS 4-4 13/16"X2.25"X124' DRILL COLLARS 4 9/16"X2.250"X9.65' ACCEL 3.5"X2.25"X1.20' XO 2.875" P-110 PH-5 TUBING WORK STRING					
RIH W 2.875" WORK STRING					
CREW SHUT DOWN FOR LUNCH					
JSA					
FINISH RIH WITH 365 JTS					
365 JTS 2.875" WORK STRING, PRE-LATCH WEIGHTS 72K UP/66K DOWN, JAR FREE WITH 10 POINTS HANGING, PULLED TO NEXT COLLAR, LAID DOWN TBG, WEIGHT INDICATOR SHOWED ORIGINAL WEIGHT,					
POOH WITH 50 STANDS					



Summary Report

Major Rig Work Over (MRWO)

Fishing

Job Start Date: 1/7/2014

Job End Date: 4/3/2014

Well Name NEW MEXICO 'O' STATE NCT-1 040		Lease New Mexico 'O' State NCT-1	Field Name Vacuum	Business Unit Mid-Continent	
Ground Elevation (ft) 3,394.00	Original RKB (ft) 3,419.00	Current RKB Elevation 3,419.00, <elvdttmstart>		Mud Line Elevation (ft)	Water Depth (ft)

Com

PJSM OR THE NIGHTS OPERATIONS

TOH W/ FISHING ASSY

LD FISHING BHA

PREP EQUIPMENT TO RIH W/ TAPERED STRING ASSY

SWAP 2-7/8" RAMS FOR 2-3/8" RAMS, SET PKR & PT RAMS 250PSI LOW & 500PSI HIGH, UNSET & PULL PKR

Report Start Date: 2/18/2014

Com

MU NOTCHED COLLAR TO 2-3/8" TBG ASSY, PU 20JTS TOTAL (614')

SWAP 2-3/8" RAMS FOR 2-7/8" RAMS, SET PKR & PT RAMS 250PSI LOW & 500PSI HIGH, UNSET & PULL PKR

TIH W/ TAPERED WS ASSY TO 5,500', INST CHECK

RIG UP STRIPPER HEAD

BREAK CIRCULATION W/ FOAM UNIT

JSA

HAND OVER TO DAY CREW

CONTINUE TO RIH. TO TOP OF FISH @ 11,461'

RIG UP POWER SWIVEL

TRIED TO ROTATE DOWN INTO 4.5" TBG. ROTATED WITH SWIVEL AND CIRCULATING WITH FOAM AIR UNIT, MADE 4' FROM 11,461' TO 11,465' (STOPPED MAKING HOLE).

RIG DOWN POWER SWIVEL

JSA

CIRCULATE BOTTOMS UP AND CONFIRM WELL BORE WAS CLEAR OF PLASTIC DEBRIS.

SHUT DOWN FOR LUNCH

START POOH

RIG DOWN STRIPPER HEAD

HAND OVER TO NIGHT CREW

POOH AND STAND BACK 2 7/8" TUBING.

POOH 1 JT 2 3/8" TUBING, RIH 32A TENSION PKR ON 2 3/8" TO +/- 25', CHANGE OUT PIPE RAMS TO 2 3/8". TEST RAMS TO 250 PSI LOW, 500 PSI HIGH. L/D PKR.

POOH AND L/D 2 3/8" TUBING. NOTCHED COLLAR HAD NO TEETH.

CLOSE BLIND RAMS, CHANGE OUT PIPE RAMS TO 2 7/8". P/U AND RIH 32A TENSION PKR ON 2 7/8" JT TO +/- 25'. TEST RAMS TO 250 LOW, 500 HIGH.

P/U 6"X 5 1/4" SHOE, 8 JTS 6" 22.8#/FT WASH PIPE, WASH PIPE BUSHING WITH DRESS OFF MILL ON BOTTOM, 4 13/16"X 2 1/16 SLB JARS, 4- 4 3/4" DC, 4 1/4" ACCELERATOR SUB, 2 7/8" XO. TOTAL BHA=406.66'

Report Start Date: 2/19/2014

Com

MU NOTCHED COLLAR TO 2-3/8" TBG ASSY, PU 20JTS TOTAL (614')

SWAP 2-3/8" RAMS FOR 2-7/8" RAMS, SET PKR & PT RAMS 250PSI LOW & 500PSI HIGH, UNSET & PULL PKR

TIH W/ TAPERED WS ASSY TO 5,500', INST CHECK

RIG UP STRIPPER HEAD

BREAK CIRCULATION W/ FOAM UNIT

JSA

HAND OVER TO DAY CREW

CONTINUE TO RIH. TO TOP OF FISH @ 11,461'

RIG UP POWER SWIVEL

TRIED TO ROTATE DOWN INTO 4.5" TBG. ROTATED WITH SWIVEL AND CIRCULATING WITH FOAM AIR UNIT, MADE 4' FROM 11,461' TO 11,465' (STOPPED MAKING HOLE).

RIG DOWN POWER SWIVEL

JSA

CIRCULATE BOTTOMS UP AND CONFIRM WELL BORE WAS CLEAR OF PLASTIC DEBRIS.

SHUT DOWN FOR LUNCH

START POOH

RIG DOWN STRIPPER HEAD

HAND OVER TO NIGHT CREW

POOH AND STAND BACK 2 7/8" TUBING.

POOH 1 JT 2 3/8" TUBING, RIH 32A TENSION PKR ON 2 3/8" TO +/- 25', CHANGE OUT PIPE RAMS TO 2 3/8". TEST RAMS TO 250 PSI LOW, 500 PSI HIGH. L/D PKR.

POOH AND L/D 2 3/8" TUBING. NOTCHED COLLAR HAD NO TEETH.



Summary Report

Major Rig Work Over (MRWO)

Fishing

Job Start Date: 1/7/2014

Job End Date: 4/3/2014

Well Name NEW MEXICO 'O' STATE NCT-1 040		Lease New Mexico 'O' State NCT-1	Field Name Vacuum	Business Unit Mid-Continent	
Ground Elevation (ft) 3,394.00	Original RKB (ft) 3,419.00	Current RKB Elevation 3,419.00, <elvdttmstart>		Mud Line Elevation (ft)	Water Depth (ft)

Com

CLOSE BLIND RAMS, CHANGE OUT PIPE RAMS TO 2 7/8". P/U AND RIH 32A TENSION PKR ON 2 7/8" JT TO +/- 25'. TEST RAMS TO 250 LOW, 500 HIGH.

P/U 6"X 5 1/4" SHOE, 8 JTS 6" 22.8#/FT WASH PIPE, WASH PIPE BUSHING WITH DRESS OFF MILL ON BOTTOM, 4 13/16"X 2 1/16 SLB JARS, 4- 4 3/4" DC, 4 1/4" ACCELERATOR SUB, 2 7/8" XO. TOTAL BHA=406.66'

Report Start Date: 2/20/2014

Com

DRESS OFF TOF 3'

POWER SWIVEL BROKE DOWN, RIG DOWN POWER SWIVEL.

PULL UP ABOVE TOF WITH SHOE

CIRCULATE WELLBORE CLEAN WITH FOAM AIR.

RIG UP REPLACEMENT POWER SWIVEL. 11,726' SHOE DEPTH

RIH TO TOF WHILE ROTATING AND CIRCULATING WITH FOAM AIR UNIT.

DRESS OFF 1' AND STOPPED MAKIND HOLE. TOF 11,465'

RIG DOWN POWER SWIVEL.

PULL ABOVE TOF

CIRC WELLBORE CLEAN WITH FOAM AIR UNIT.

LAID DOWN TOP 30 JOINTS, SECURE WELL HEAD. SHUT DOWN DUE TO HIGH WINDS.

WELL SHUT IN DUE TO HIGH WINDS. NO OPERATIONS TILL NIGHT TOUR.

HAND OVER TO NIGHT CREW

WELL SHUT IN DUE TO HIGH WINDS. NO OPERATIONS TILL WINDS DIE DOWN.

JSA

PULL 150 STAND OUT OF THE HOLE. STANDING BACK WORK STRING IN THE DERRICK.

Report Start Date: 2/21/2014

Com

POOH L/D WASH PIPE ASSEMBLY.

SPOT IN AND R/U WIRE LINE.

RIH WITH GAUGE RING. TAGGED FISH @11499'. UNABLE TO GET INTO 4.5 TUBING. POOH GUAGE RING.

RIG DOWN WIRELINE TRUCK.

RUN 30 STAND KILL STRING

HAND OVER RIG TO DAY CREW, PJSM, JSA.

JSA

POOH 30 STAND KILL STRING.

PICK UP AND MAKE UP SPEAR BHA,

3."X1"X6' SPEAR

3 1/8"X1"X1.19' XO

2-3 1/8"X1 11/16"X7' EA. DRILL COLLAR (SPEAR EXTENSION)

3 1/8"X1"X.93' XO

3 1/8"X1"1.19 STOP

3 1/8"X1.5"X5.2' BIT SUB

4 1/4"X1X1.13'

4 9/16"X2.313"X1.21' XO

4 3/4"X2.250"X6.15' BUMPER SUB

3 1/2"X2 1/4"X1.27' XO

4 7/16"X1.938"X12.47' JARS

4-4 13/16"X2.25"X124' DRILL COLLARS

4 9/16"X2.250"X9.65' ACCEL

3.5"X2.25"X1.20' XO

2.875" P-110 PH-6 TUBING WORK STRING

TIH WITH 2.875" WORK STRING.

SHUT DOWN FOR CREW LUNCH.

FINISH RIH W WORK STRING. TAGGED FISH WITH SPEAR. 10' IN ON JT # 365.

PUSH SPEAR INTO FISH 19', SPEAR REPEATEDLY PULLED FREE WITH 20 POINTS PULLED INTO SPEAR.

PULL SPEAR OUT OF FISH, LAY DOWN JOINT.

RIG DOWN PULLING UNIT. DUE TO RIG MAT AND T-SEAL CRACKING OUT AND COLLAPSING.

STAND BY WHILE WAITING ON REPLACEMENT T-SEAL AND RIG MAT.

Report Start Date: 2/22/2014

Com

NPT DUE TO RIG MAT AND T-SEAL CRACKING OUT AND COLLAPSING.

POOH AND STAND BACK 60 STANDS OF 2 7/8" W/S.



Summary Report

Major Rig Work Over (MRWO)

Fishing

Job Start Date: 1/7/2014

Job End Date: 4/3/2014

Well Name NEW MEXICO 'O' STATE NCT-1 040		Lease New Mexico 'O' State NCT-1	Field Name Vacuum	Business Unit Mid-Continent	
Ground Elevation (ft) 3,394.00	Original RKB (ft) 3,419.00	Current RKB Elevation 3,419.00, <elvdttmstart>		Mud Line Elevation (ft)	Water Depth (ft)

Com

HAND OVER RIG TO DAY CREW.

FINISH POOH.

BROKE OUT AND LAID DOWN FISH BHA. RECOVERED 10.5' OF SPLIT TBG.

SHUT DOWN FOR LUNCH.

P/U 6"X 5 1/4" SHOE, WASH PIPE BUSHING WITH DRESS OFF MILL(WITH INSERTS BELOW STARBIDE) ON BOTTOM, 4 13/16"X 2 1/16 SLB JARS, 4- 4 3/4" DC, 4 1/4" ACCELERATOR SUB, 2 7/8" XO.

RUN IN HOLE WITH 2.875" WORK STRING.

HAND OVER RIG TO NIGHT CREW.

PJSM, JSA

TIH 43 JTS TO TOF @ 11,497'.

R/U POWER SWIVEL

R/U STRIPPER HEAD.

ATTEMPT TO BREAK CIRCULATION BY REVERSE CIRCULATION. PUMPED 415 BBLS FRESH WATER. UNABLE TO BREAK CIRCULATION.

BREAK CIRCULATION WITH FOAM UNIT @ 1700 PSI.

Report Start Date: 2/23/2014

Com

ATTEMPT TO BREAK CIRCULATION WHILE JUST ABOVE FISH USING FOAM UNIT. UNSUCCESSFUL.

POOH TO +/- 8,500' TO BREAK CIRCULATION WITH FOAM UNIT.

HAND OVER TO DAY CREW.

JSA

BREAK CURCULATION WITH FOAM AIR UNIT.

RIH, TAG FISH @ 11,497'

RIG UP POWER SWIVEL.

CUT WITH SHOE AND DRESS OFF WITH MILL FROM 11,497'-11,502' (5'). HEAVY TOURQUE FOR FIRST TWO FEET. AVG TOURQUE 2,100 PSI WITH 1-2 PTS DOWN ON FISH.

HAND OVER TO NIGHT CREW

JSA, PJSM.

CUT WITH SHOE AND DRESS OFF WITH MILL FROM 11,502'- 11507' (5'). AVG TOURQUE 2,300 PSI WITH 1-2 PTS DOWN ON FISH.

Report Start Date: 2/24/2014

Com

CUT WITH SHOE AND DRESS OFF WITH MILL FROM 11507'- 11508' (1'). AVG TOURQUE 2,300 PSI WITH 1-2 PTS DOWN ON FISH.

REPLACE RUBBER IN STRIPPER HEAD.

CIRCULATE DEBRIS FROM WELL BORE.

HAND OVER RIG TO DAY CREW.

JSA

POOH STANDING BACK WORK STRING IN THE DERRICK

SHUT DOWN FOR LUNCH

JSA

BROKE OUT AND LAID DOWN BHA (HEAVY SCARING ON OD OF SHOE, MILL HALF WAY WORN OUT +/-, NO FISH IN SHOE)

SET RBP AT SURFACE FOR BOP R&R

NIPPLE DOWN BOP DUE TO REPEATED HYD LEAKS.

NU UP NEW BOP (7 1/16"X5K, BLIND/2.875" RAMS/ANNULAR)

TEST RBP (BLINDS AND RAMS) GOOD TEST

PULL AND LAYDOWN RBP

HAND OVER TO NIGHT CREW

PJSM, JSA

P/U 5 3/4" BOX TAP W/6" OD SEGMENT #7 F.N. 1' 4 3/4" X 2

XO- 4 3/4" X 2 1/4"

BUMPER SUB- 4 3/4 X 2 1/4"

XO- 4 5/8" X 2 3/16"

4 - 4 3/4" DC

XO- 4 9/16" X 2 1/8"

TIH BHA ON 2 7/8" W/S

Report Start Date: 2/25/2014

Com

TIH BHA ON 2 7/8" W/S TO 11503'

PUMP 100 BBLS FRESH WATER DOWN TUBING.



Summary Report

Major Rig Work Over (MRWO)

Fishing

Job Start Date: 1/7/2014

Job End Date: 4/3/2014

Well Name NEW MEXICO 'O' STATE NCT-1 040		Lease New Mexico 'O' State NCT-1	Field Name Vacuum	Business Unit Mid-Continent	
Ground Elevation (ft) 3,394.00	Original RKB (ft) 3,419.00	Current RKB Elevation 3,419.00, <elvdttmstart>		Mud Line Elevation (ft)	Water Depth (ft)

Com

SPOT IN AND R/U WIRE LINE UNIT. RIH WITH CAMERA.

HANDOVER RIG TO DAY CREW

PJSM, JSA

SPACE OUT TBG.

ATTEMPT TO RIH TO TOF WITH A DOWN HOLE CAMERA (MULTIPLE ATTEMPTS), UNABLE TO GET TO TOF DUE TO A TBG THREAD PROTECTOR CHUNK OF PLASTIC. PUMP WATER AT HIGHER RATES TO PUMP DOWN PLASTIC (UNSUCCESSFUL).

RIH W 1.90" GUAGE RING, JUNK BASKET #5, CCL, AND THREE SINKER BARS. RIH AND FORCE PLASTIC OUT OF BOTTOM OF TBG.

RIH WITH DOWN HOLE CAMERA. (TO MANY OBSTRUCTIONS OF PLASTIC IN TBG TO GET TO FISH WITH CAMERA, TRIED PUMPING MORE TURBULANT FLOW UP TO 4 BPM ALSO). POOH

HAND OVER TO NIGHT CREW.

PJSM, JSA

R/D WIRE LINE UNIT

R/U POWER SWIVEL, LATCH ONTO FISH WITH BOX TAP AND ROTATE WITH POWER SWIVEL.

R/D POWER SWIVEL, P/U 2 7/8" ELEVATORS.

PULL ON FISH TO 110,000 LBS. BOX TAP RELEASED FISH. TOH AND STAND BACK W/S.

Report Start Date: 2/26/2014

Com

NPT TIME DUE TO HIGH WINDS AND WET/ICY CONDITIONS.

HAND OVER TO DAY CREW

JSA

START POOH WITH WORK STING, STANDING BACK WORK STRING IN THE DERRICK.

POWER TONGS STIFF ARM BROKE OFF OF MOUNT. (CALLED FOR A WELDER, TRI-GAS METER FOR HOT WORK PERMIT).

LUNCH BREAK

HOT WORK AND JSA FOR WELDER

WELDER CUT OFF, REPAIRED, AND INSTALLED DAMAGED STIFF ARM ASSEMBLY FOR POWER TONGS.

FINISH POOH

HANDOVER RIG TO NIGHT CREW. PJSM, JSA

P/U BHA WASH PIPE ASSEMBLY,

6" SHOE W/ 4 1/2" ID

6 JTS 6" WASH PIPE

6" WASH PIPE EXT W/2 ROWS OF DIAMONDS

2 JTS WASH PIPE

DRESS OFF MILL

JARS

4 - 4 3/4" DC

ACCELERATOR

XO

TOTAL BHA - 410.36'

TIH WITH WASH PIPE ASSEMBLY ON 2 7/8" W/S TO 5980'.

R/U STRIPPER HEAD

BREAK CIRCULATION USING FOAM UNIT AT 1500 PSI.

CONTINUE TO TIH FROM 5980' TO TOF.

Report Start Date: 2/27/2014

Com

TIH FROM 5980' TO 11500'.

R/U POWER SWIVEL

BREAK CIRCULATION WITH FOAM UNIT.

WASH DOWN AROUND TUBING @11508', ENCOUNTERED TIGHT SPOTS AND DRESSED OFF. CONTINUE TO WASH DOWN TO 11544'.

HAND OVER TO NIGHT CREW.

JSA

WASH DOWN AROUND 4.5" TUBING FISH. MAX SHOE DEPTH 11,766', MAX BUSHING DEPTH 11,518'. (WASHED DOWN 248'+/-). ONCE BUSHING WAS ON TOP OF FISH, WE ENGAGED FISH WITH BUSHING ROUGHLY TO JAM FISH IN WASH PIPE. CONTINUED THIS TILL WE HAD MINIMAL TOURQUE. KILL TUBING WITH WATER.

RIG DOWN POWER SWIVEL.

START POOH OPERATIONS.

TURN OVER RIG TO NIGHT CREW, PJSM, JSA

TOH AND STAND BACK 2 7/8" W/S



Summary Report

Major Rig Work Over (MRWO)

Fishing

Job Start Date: 1/7/2014

Job End Date: 4/3/2014

Well Name NEW MEXICO 'O' STATE NCT-1 040	Lease New Mexico 'O' State NCT-1	Field Name Vacuum	Business Unit Mid-Continent
Ground Elevation (ft) 3,394.00	Original RKB (ft) 3,419.00	Current RKB Elevation 3,419.00, <elvdttmstart>	Mud Line Elevation (ft) Water Depth (ft)

Com

L/D WASH PIPE ASSEMBLY, NO FISH CAUGHT (WASH PIPE HAD HEAVY SCARING ON OD, CUT-RITE IN SHOE WAS WORN, DIAMONDS WERE WORN)

Report Start Date: 2/28/2014

Com

BREAK FOR LUNCH

P/U FISHING BHA
5 3/4" OS W/ 4 3/8" GRPL
1' FN 4 3/4" X 2 11/16"

XO
BUMPER SUB
XO
JARS
4 - 4 3/4" DC
ACCELERATOR
XO

TOTAL BHA- 160.90'

TIH WITH BHA ON 2 7/8" W/S TO 11188'.

HAND OVER RIG TO DAY CREW

JSA

FINISH TIH WITH OVERSHOT.

PRE-LATCH WEIGHTS (74K UP, 68K DOWN) LATCH OVERSHOT ONTO 4.5" TBG FISH.

JAR FISH. STARTED JARRING WITH 20 PTS PULLED INTO IT, WORKING UP TO 30 PTS PULLED.

RIG UP ROTARY WIRE LINE TRUCK.

ATTEMPT TO RIH WITH BACK OF TOOL. UNABLE TO GET INTO TOF AT 11,508'.

JAR FISH. JARRING WITH 30K OVER STRING WEIGHT. FISH STARTED PULLING UP HOLE (DRAGGING IN SCALE). RECIPROCATED FISH REPEATEDLY WHILE PUMPING 150 BBL FRESH WATER DOWN ANNULUS. EVENTUALLY FREEING UP FISH. EXTRA 16 PTS TBG WEIGHT

RIG DOWN WIRE LINE TRUCK.

START POOH OPERATIONS.

HAND WELL OVER TO NIGHT CREW. PJSM, JSA.

POOH AND STAND BACK 2 7/8" W/S.

L/D OVER SHOT BHA. CALIPER ELEVATORS TO 4 1/2", CHANGE OUT SLIPS AND TUBING TONGS. POOH AND L/D 15 1/2 JTS (498.77') OF 4 1/2" TUBING FISH. TUBING BADLY DAMAGED. FINAL JT SHOWS ORIGINAL CHEMICAL CUT.

P/U WASH PIPE ASSEMBLY

SHOE W/5" ID + ROWS OF DIAMONDS
EXTENSION W/ 3 ROWS OF DIAMONDS
2 JTS 6" WASH PIPE
DRIVE BUSHING F.N. 1.32 4 5/8" X 2 3/8"
JARS
4 - 4 3/4" DC
ACCELERATOR
XO

TOTAL BHA - 221.93'

Report Start Date: 3/1/2014

Com

CONTINUE TO P/U WASH PIPE ASSEMBLY

SHOE W/5" ID + ROWS OF DIAMONDS
EXTENSION W/ 3 ROWS OF DIAMONDS
2 JTS 6" WASH PIPE
DRIVE BUSHING F.N. 1.32 4 5/8" X 2 3/8"
JARS
4 - 4 3/4" DC
ACCELERATOR
XO

TOTAL BHA - 221.93'

TIH TO +/- 6039' SHUT IN WELL, SDON.

WELL SHUT IN AND RIG SHUT DOWN FOR WEEKEND.

Report Start Date: 3/2/2014



Summary Report

Major Rig Work Over (MRWO)

Fishing

Job Start Date: 1/7/2014

Job End Date: 4/3/2014

Well Name NEW MEXICO 'O' STATE NCT-1 040		Lease New Mexico 'O' State NCT-1	Field Name Vacuum	Business Unit Mid-Continent	
Ground Elevation (ft) 3,394.00	Original RKB (ft) 3,419.00	Current RKB Elevation 3,419.00, <elvdttmstart>		Mud Line Elevation (ft)	Water Depth (ft)

Com					
NO ACTIVITY ON WELL SITE					
Report Start Date: 3/3/2014					
Com					
WELL SHUT IN NO ACTIVITY					
JSA					
RIG UP STRIPPER HEAD					
CIRCULATE WELL BORE WITH FOAM AIR UNIT.					
CONTINUE RIH TO 11,758'.					
RIG UP POWER SWIVEL					
WASH DOWN WITH SHOE, FOAM AIR, AND SWIVEL FROM 11,758'-11,944'. BECAME STUCK, THEN FREE'D UP, PLUGGED OFF TBG.					
RIG DOWN POWER SWIVEL					
START POOH.					
HAND OVER RIG TO NIGHT CREW, PJSM, JSA					
POOH, W/S WAS STUCK. RIH WITH 1 JT. FREED TUBING. POOH TO +/- 6000' AND STAND BACK W/S.					
Report Start Date: 3/4/2014					
Com					
POOH TO +/- 6000', BREAK CIRCULATION USING FOAM AIR UNIT @ 1500 PSI.					
TIH WITH WASH PIPE ASSEMBLY TO 11851'.					
R/U POWER SWIVEL					
BREAK CIRCULATION WITH FOAM AIR UNIT @ 1500 PSI.					
HAND OVER RIG TO DAY CREW					
JSA					
CONTINUE RIH WHILE ROTATING AND CIRCULATING WITH FOAM AIR UNIT. DRESSED OFF TOP OF FISH AT 12,045' (4.5" TBG). CONTINUE RIH TO TOP OF PACKER AT 12,089', PACKER APPEARED TO BE MOVING DOWN HOLE (TORQUE WAS NOT ERRATIC).					
KILL TUBING WITH WATER.					
RIG DOWN POWER SWIVEL.					
START POOH STANDING TUBING BACK IN THE DERRICK.					
HAND OVER TO NIGHT CREW					
JSA					
POH W/ WP BHA					
LD BHA ASSY					
Report Start Date: 3/5/2014					
Com					
LD WP ASSY, SHOE SHOWS SIGNS OF WEAR ON NOSE & ID, RD CSG CREW					
MU SPEAR BHA, 4.010" GRAPPLE ON SPEAR, 7' EXT, TBG STOP, BUMPER SUB, JARS, 4EA DC, ACCELERATOR, BHA TOTAL LENGTH 172'					
TIH W/ SPEAR ASSY INST CHECK VALVE @ 6,000'					
HAND OVER TO DAY CREW					
JSA					
RIH WITH 5 STANDS, SHUT DOWN DUE TO HIGH WINDS AND HIGHER GUSTS.					
WELL SHUT IN/NO OPERATIONS DUE TO HIGH WIND.					
HAND OVER TO NIGHT CREW					
JSA					
TIH W/ SPEAR ASSY					
MU PS & PUMP W/ AIRFOAM UNIT TO MOVE DEBRIS IN FRONT OF SPEAR, SEMMED TO ENTER FISH +/- 12,078', FELT WHAT APPEARED TO BE BUMPER SUB EXTEND 3 TIMES WHEN ENTERING FISH, ENTERED FISH 10' TO AVOID PUSHING INTO OPEN HOLE, PU ON FISH & OBSERVED 6-8K PTS OF DRAG WHEN PU, CONFERRED WITH DAY WSM & SLB FISHING HAND TO NOT TURN ASSY DUE TO THE POSSIBILITY OF RELEASING GRAPPLE & LOSING FISH, LD PS					
TOH W/ SPEAR ASSY, WT INDICATOR SHOWS 18PT DRAG POH					
Report Start Date: 3/6/2014					
Com					
TOH W/ FISHING ASSY, REMAINED TIED BACK TO LIMIT SPEED DUE TO DRAG, DRAG TAPERED OFF AFTER 15 STANDS, 21 STANDS FROM SURFACE STARTED TO SEE FLUID COMING UP ANNULUS, PUMPED 20BBLS FW & PUT WELL ON VACUUME, PULLED 9 STANDS STARTED SEEING FLOW AGAIN, RIG IS 12 STANDS FROM SURFACE					
PUMP 50BBLS FW, MONITOR WELL, WELL LOST VACUUME AFTER 10 MIN AND STARTED BLOWING, CONFERRED WITH DAY SUPERVISOR AND CAME UP W/ PLAN FORWARD TO PUMP 150BBLS BW TO ENSURE WELL IS DEAD BEFORE GETTING TO BHA					
WELL SHUT IN, WAIT FOR BW TO BE DELIVERED TO LOCATION, MONITOR WELL PSI, PRESSURE BUILT TO 150PSI TBG & 200PSI CSG					
HAND OVER TO DAY CREW					
JSA					



Summary Report

Major Rig Work Over (MRWO)

Fishing

Job Start Date: 1/7/2014

Job End Date: 4/3/2014

Well Name NEW MEXICO 'O' STATE NCT-1 040		Lease New Mexico 'O' State NCT-1	Field Name Vacuum	Business Unit Mid-Continent	
Ground Elevation (ft) 3,394.00	Original RKB (ft) 3,419.00	Current RKB Elevation 3,419.00, <elvdttmstart>		Mud Line Elevation (ft)	Water Depth (ft)

Com
BLOW DOWN WELL.
POOH AND LAID DOWN BHA, RECOVERED 2.5 JTS 4.5" TBG, AND PACKER ***ALL FISH RECOVERED (PACKER SLIPS WERE DIMISHED WITH CORROSION)
LOADED EXCESS EQUIPMENT AND HAD HAULED OFF. RELEASED (FLOW BACK MANIFOLD, AIR FOAM UNIT, ALL NIGHT CREWS, CASING CREW EQUIPMENT).
CREW TRAVEL HOME
WELL SHUT IN, NO OPERATIONS
Report Start Date: 3/7/2014
Com
Well shut in, no activity.
Crew travel to location
JSA
Rig up Baker Hughes wire line truck
Made gauge ring run from surface with 5.90" ring. Sat down at shoe 12,135'. (open hole was drilled with 6 1/8" bit). POOH.
Logged 7" wellbore with Baker Hughes Micro Verti-Log tool. Bad casing from 10,000' +/- to 12,135'. Several areas of bad casing between 6,000' and 10,000'. (Baker analyst will email logs to Mr. Holland in Midland for review and top of the liner depth).
RIH set Peak Completions Composit Bridge Plug at 12,100'. POOH, SWH SDFN.
Crew travel home.
Well shut in, no activity.
Report Start Date: 3/8/2014
Com
WELL SHUT IN NO ACTIVITY
CREW TRAVEL TO LOCATION
PJSM FOR THE DAYS OPERATIONS WITH CREW & WL EMPLOYEES
MU DUMP BAILER ASSY TO WL, MIX CMT & LOAD BAILER, RIH & BAIL CMT ON TOP OF PLUG SET @ 12,100' (+/- 7' CMT), POH W/ BAILER & LD SAME
MU & RIH W/ PEAK COMPLETIONS CBP & SET @ 12,090'. POH W/ SETTING ASSY
MU DUMP BAILER ASSY TO WL, MIX CMT & LOAD BAILER, RIH & BAIL CMT ON TOP OF PLUG SET @ 12,090' (+/- 7' CMT), POH W/ BAILER & LD SAME
RD WL EQUIPMENT
MU DUAL RUN PKR / RBP ASSY, TIH TO 2,700', WIND PICKED UP AND CAUSED UNSAFE CONDITIONS, SECURE WELL & SDFN
CREW TRAVEL FROM LOCATION
WELL SHUT IN NO ACTIVITY
Report Start Date: 3/9/2014
Com
WELL SHUT IN, NO ACTIVITY
Report Start Date: 3/10/2014
Com
Well shut in, no operations
Crew travel to location.
JSA
Finish RIH with 2.875" work string. 323 jts.
Set Peak Completion RBP @ 9,998' (20 pts pack off).
Set Peak Completion PKR @ 9,957' (20 pts compression).
Test tubing and annulus (good test to 500 psi each), release pressure and pressure up multiple time on annulus (no leak).
Release PKR and RBP.
Ttest well bore from surface to PBTD 12,082' (good test to 500 psi).
Start POOH, SWH SDFN
Crew travel home.
Well shut in, no operation.
Report Start Date: 3/11/2014
Com
WELL SHUT IN NO ACTIVITY
CREW TRAVEL TO LOCATION
Tenant #1, E-COLORS. Hazard of the day.Focus on job.
Discussed Stop Work Authority (SWA). SSE. Crush Point.
House keeping.
PREP LOCATION FOR LINER RUN, OFFLOAD & TALLY TBG



Summary Report

Major Rig Work Over (MRWO)

Fishing

Job Start Date: 1/7/2014

Job End Date: 4/3/2014

Well Name NEW MEXICO 'O' STATE NCT-1 040		Lease New Mexico 'O' State NCT-1	Field Name Vacuum	Business Unit Mid-Continent	
Ground Elevation (ft) 3,394.00	Original RKB (ft) 3,419.00	Current RKB Elevation 3,419.00, <elvdttmstart>		Mud Line Elevation (ft)	Water Depth (ft)

Com

CREW TRAVEL FROM LOCATION

WELL SHUT IN NO ACTIVITY

Report Start Date: 3/12/2014

Com

WELL SHUT IN NO ACTIVITY

CREW TRAVEL TO LOCATION

Tenant #2, E-COLORS. Hazard of the day.Focus on job.
Discussed Stop Work Authority (SWA). SSE. Crush Point.
House keeping.

CLEAN, DRIFT & INSPECT CSG & TREADS

PJSM TO PU / MU & TIH W/ LINER ASSY

PU / MU 5.5" LINER ASSY, (FLOAT SHOE, 2JTS 5.5" CSG, FLOAT COLLAR, 47JTS 5.5" CSG, LINER TOP PKR ASSY TOOL), TIH ON 2-7/8" TBG, SECURE WELL & SDFN

CREW TRAVEL FROM LOCATION

WELL SHUT IN NO ACTIVITY

Report Start Date: 3/13/2014

Com

WELL SHUT IN NO ACTIVITY

CREW TRAVEL TO LOCATION

Tenant #3, E-COLORS. Hazard of the day.Focus on job.
Discussed Stop Work Authority (SWA). SSE. Crush Point.
House keeping.

TIH W/ LINER ASSY, RUNNING RABBIT THROUGH EACH STAND, FILL PIPE EVERY 30 STANDS

CIRC HOLE TO EXPEL AIR IN WB

DROP 1.5" ALUMINUM BALL, RU TO SET TOOL, PUMP BALL ON SEAT TO SET SLIPS, SHEAR @ 1,800PSI, SET DOWN RELEASED TBG FROM TOOL, (PBR @ 9,953', PACKER @ 9,961', HANGER @ 9,964', XO, 47JTS 5.5" 17# L80 HUNTING THREAD CASING, LANDING COLLAR, FLOAT COLLAR, 2JTS 5.5" 17# L80 HUNTING THREAD CSG & FLOAT SHOE @ 12,079') SECURE WELL & SDFN

CREW TRAVEL FROM LOCATION

Report Start Date: 3/14/2014

Com

WELL SHUT IN NO ACTIVITY

CREW TRAVEL TO LOCATION

Tenant #4, E-COLORS. Hazard of the day.Focus on job.
Discussed Stop Work Authority (SWA). SSE. Crush Point.
House keeping.

PREP LOCATION FOR CEMENT JOB

RU CEMENTERS ON LOCATION

CEMNT LINER AS PER PROCEDURE

PT LINES TO 5,000PSI

SHEAR BALL SEAT @ 3,200PSI

PUMP 20BBLS SPACER & ENSURED RETURNS

PUMP 30BBLS TOTAL CEMENT (110 SACKS CLASS H, .30 CFR-2 W/O FOAMER, .30 HALAD (R32).

WASH UP CEMENTERS EQUIPMENT

DISPLACE CMT

DROP PLUG & PUMP TO SEAT, ON SEAT @ 52BBLS, RELEASED WIPER PLUG @ 1,750PSI

PUMP WIPER PLUG, ON SEAT @ 100.5BBLS, PRESSURE UP TO 2,000PSI & HOLD 5MIN

RELEASED TBG PSI & RECOVERED 0.5BBLS FW

SET WEATHERFORD PACKER AS PER WEATHERFORD HAND ON LOCATION, PT ANNULUS TO 500PSI, PT GOOD, UNSTING TBG FROM LINER RUNNING TOOL

REVERSE CIRCULATE THROUGH TBG @ 2BPM & 480PSI ON ANNULUS, CMT TO SURFACE @ 55BBLS, RECOVERED 4.5BBLS CMT TOTAL, CIRCULATE TBG CLEAN

RD CEMENTERS

TOH WITH TBG, SECURE WELL & SDFN

CREW TRAVEL FROM LOCATION

WELL SHUT IN NO ACTIVITY

Report Start Date: 3/15/2014

Com

WELL SHUT IN NO ACTIVITY

Report Start Date: 3/16/2014

Com



Summary Report

Major Rig Work Over (MRWO)

Fishing

Job Start Date: 1/7/2014

Job End Date: 4/3/2014

Well Name NEW MEXICO 'O' STATE NCT-1 040	Lease New Mexico 'O' State NCT-1	Field Name Vacuum	Business Unit Mid-Continent
Ground Elevation (ft) 3,394.00	Original RKB (ft) 3,419.00	Current RKB Elevation 3,419.00, <elvdttmstart>	Mud Line Elevation (ft) Water Depth (ft)

Report Start Date: 3/17/2014

Com

WELL SHUT IN NO ACTIVITY

CREW TRAVEL TO LOCATION

Tenant #7, E-COLORS. Hazard of the day. Focus on job.
Discussed Stop Work Authority (SWA). SSE. Crush Point.
House keeping.

TOH W/ LINER RUNNING ASSY

MU & TIH W/ CO ASSY (4.75" CONE BUSTER MILL & 6EA 3.5" DC), TAGGED HIGH @ 11,962' (XO & FLOAT COLLAR SET @ 11,987')

PT WELL TO 500PSI BEFORE MILLING OUT FLOATS, PT GOOD

MU PS & MILL TO TOP OF FLOAT SHOE @ 11,987', MILLED TO JT COLLAR @ 12,002'

CIRCULATE HOLE CLEAN, HAD NO METAL IN RETURNS DURING CIRCULATION BUT DID RECOVER RUBBER

LAY DOWN 6JTS, SECURE WELL & SDFN

CREW TRAVEL FROM LOCATION

WELL SHUT IN NO ACTIVITY

Report Start Date: 3/18/2014

Com

Well shut in, no operation.

Crew travel to location.

JSA

RIH to 12,003'.

RUPS

RU Stripper Head.

Drill cement/float/2 jts shoe/guide shoe/two composite plugs from 12,003' to 12,119'. Lost circulation and fell through at 12,119'.

Pumped water till we regained circulation. for 50 bbl.

Continue RIH while rotating to 12, 230'+/-.

Circulate wellbore clean.

RDPS

Pull EOT to 12,000'.

Crew return to yard.

Well shut in, no activity.

Report Start Date: 3/19/2014

Com

Well shut in, no activity.

Crew travel to location.

JSA

TIH with tbg, EOT @ 12,230'.

RU Petroplex acid unit.

Pump 1,000 gallons 15% HCL w 3x Corrosion Inhibitor. Pumped into openhole and over displaced with 100 bbl 10# Brine.

RD Petroplex acid unit.

Start POOH laying down work string. Started dragging 15 pts over string weight.

Crew shut down for lunch.

TIH with EOT @ 12,230'

Start POOH standing back work string. Started dragging 15 pts over string weight.

Bull head 250 bbl fresh water down annulus. SWH SDFN

Crew travel home.

Well shut in, no activity.

Report Start Date: 3/20/2014

Com

Well shut in, no operations.

Crew travel to location

JSA

WHPSI Vac, TIH from liner top to end of liner shoe 12,100'.

POOH laying down work string (very minimal drag in liner). laid down 354 jts on racks. SWH SDFN

Crew travel home.

Well shut in, no operations.

Report Start Date: 3/21/2014



Summary Report

Major Rig Work Over (MRWO)

Fishing

Job Start Date: 1/7/2014

Job End Date: 4/3/2014

Well Name NEW MEXICO 'O' STATE NCT-1 040		Lease New Mexico 'O' State NCT-1	Field Name Vacuum	Business Unit Mid-Continent	
Ground Elevation (ft) 3,394.00	Original RKB (ft) 3,419.00	Current RKB Elevation 3,419.00, <elvdttmstart>		Mud Line Elevation (ft)	Water Depth (ft)

Com					
Well shut in, no operations					
Crew travel to location.					
JSA					
WHPSI Vac, Finish POOH laying down work string and drill BHA					
RU Archer Wireline					
Trip 4.625" Gauge ring and junk basket with GR/CC					
Pumped 150 bbl 10# brine down casing.					
Pulled 700 lbs over string weight while in 5.5" liner, no drag in 7". POOH with wireline.					
Pumped 250 bbl 10# brine, SWH SDFN.					
Crew travel home from location.					
Well shut in, no activity.					
Report Start Date: 3/22/2014					
Com					
Well shut in, no activity.					
Crew travel to location.					
JSA					
WHPSI Vac, Pump 150 bbl 10# brine down csg.					
TRIP WL 4.625" Gauge Ring to 12,100' (no drag).					
TIH w Inj Pkr and BHA (wireline set, slow burn charge in Baker 20 setting tool), set Pkr @ 12,075', pull up/tag, POOH.					
2.31F Gudgeon with plug inplace,					
5.5"X2.875" Arrow Set 10 K ASI-X,					
2.875"X6' Sub,					
2.31F Inline Profile Nipple,					
2.875"X6' Sub,					
2.31R Inline Profile Nipple,					
2.875" Wireline Re-entry Guide. (all items are Nickle Plated with Plastic coating Internal). (Pkr would not enter liner top with out fluid movement down, had to pump water, then packer would enter liner top).					
RDWL					
Offload workover string from racks, load Inj string onto racks. SWH, SDFWE ****4.5"X3.5" cross over had damaged seal area, sent into Tuboscope Midland for inspection and repair.					
Well shut in, no activities.					
Report Start Date: 3/23/2014					
Com					
Well shut in.					
Report Start Date: 3/24/2014					
Com					
Well shut in, no activities.					
Crew travel to location.					
JSA					
WHPSI 0 psi, CSG cleaning crew cleaned tubing pins and boxes, (82 good/2 bad jts of 3.5" IPC, 390 good/54 bad jts 4.5" IPC)					
Make up overshot and 5 jts 3.5" IPC while hydrotesting to 6,500 psi (below the slips) (plastic coating being chipped off by hydrotesting tools)					
Laid down string, SWH SDFN.					
Crew travel home.					
Well shut in, no activities.					
Report Start Date: 3/25/2014					
Com					
Well shut in no activities					
Crew travel to location					
JSA					
Check well pressure 0 psi.					
Calibrate 3 1/2" slip type elevators					
HPJSM with Express and Key crew on running casing					
Calibrate tongs to pick up 3 1/2" IPC tubing					
TIH with:					
On-off Tool [length 1.45' OD 4.5" ID 2.5"]					
2 7/8" Pin* 3 1/2" CS hydril box [0.85' OD 3.92" ID 2.4"]					
20 joints of 3.5" IPC tubing					



Summary Report

Major Rig Work Over (MRWO)

Fishing

Job Start Date: 1/7/2014

Job End Date: 4/3/2014

Well Name NEW MEXICO 'O' STATE NCT-1 040		Lease New Mexico 'O' State NCT-1	Field Name Vacuum	Business Unit Mid-Continent	
Ground Elevation (ft) 3,394.00	Original RKB (ft) 3,419.00	Current RKB Elevation 3,419.00, <elvdttmstart>		Mud Line Elevation (ft)	Water Depth (ft)

Com					
Test pipe ram to: 250 psi low and hold for 5 minutes 500 psi high and hold 5 minutes					
Continue TIH with 51 joints to 2149.45'					
Crew travel					
Wait on 3.5 x 4.5 crossover sub					
Well shut in					
Report Start Date: 3/26/2014					
Com					
Well shut in					
Crew travel to location					
Pre tour safety meeting and JSA					
Wait on 3.5 x 4.5 crossover sub					
Crew travel					
Wait on 3.5 x 4.5 crossover sub					
Well shut in					
Report Start Date: 3/27/2014					
Com					
Well shut in					
Crew travel to location					
Pre tour safety meeting and JSA					
Caliper crossover and prepare to run tubing					
HPJSM for running tubing					
Run one more joints of 3.5" IPC for a total of 72 joints to 2179.63 ft.					
Run 1.03 ft 3 1/2 CS Pin x 4 1/2 CSHydril box Crossover Sub (OD 4 15/16" ID 2 7/8")					
Run 1 joints of 4.5" tubing to 2211'					
Test 4.5" pipe rams to:					
250 psi low for 5 minutes- Good 500 psi high for 5 minutes- Good					
Run 8 jts of 4.5" tubing to 2452'					
Wait on weather. Wind at 12 mph with windgust about 20 mph					
Install stabbing board.					
Conitnue runing 4.5" tubing to 2662'					
Crew break for lunch. Review JSA					
Repair tubing tongs					
Continue running 4.5" tubing to 6955.31'					
165 joints of 4.5" tubing in hole (4771.80')					
Crew travel from location					
Well shut in					
Report Start Date: 3/28/2014					
Com					
Well shut in, no activities.					
Crew travel to location.					
JSA					
Pump 60 bbl fresh water down casing.					
Continue RIH with injection string. RIH 159 jts (total 396 jts). (EOT-11,549')(Tagged liner lightly at 9,974', rotated tubing and continued into the well) Casing crew tongs blew a hydraulic hose. SDFN, SWI					
Crew travel home.					
Well shut in, no operations.					
Report Start Date: 3/29/2014					
Com					
NO ACTIVITY					



Summary Report

Major Rig Work Over (MRWO)

Fishing

Job Start Date: 1/7/2014

Job End Date: 4/3/2014

Well Name NEW MEXICO 'O' STATE NCT-1 040		Lease New Mexico 'O' State NCT-1	Field Name Vacuum	Business Unit Mid-Continent	
Ground Elevation (ft) 3,394.00	Original RKB (ft) 3,419.00	Current RKB Elevation 3,419.00, <elvdttmstart>		Mud Line Elevation (ft)	Water Depth (ft)

Com

CREW TRAVEL

SAFETY MTG, REVIEW JSA'S AND TENET #9, CALIPER 4 1/2" ELEVATORS.

WAITED ON CSG CREW (EXPRESS) CHECK WELL PRESSURE=0#, CHANGE OUT HYDRAULIC HOSE FROM TUBING TONGS

BOP DRILL, PU 15 JTS 4 1/2" 12.75# TBG TO 11,978' EOT

OFF LOAD WELL HEAD TREE AND HANGER.

PIN TO PIN SUB NOT WITH EQUIPMENT THAT WAS OFF LOADED.

CALLED CHUCK GORDON WITH GE, PIN TO PIN SUB WAS NEVER PICK UP WITH TREE AND HANGER AT BEGINNING OF JOB
LOCATED PIN TO PIN SUB ON LOCATION. PLASTIC COATING CHIPPED. AND PITTING ON THREADS,
CALLED LOCAL MACHINE SHOT AND HAVE A 4 1/2" PIN BTS-8 X 4 1/2" PIN TSHP-SR BUILT AND COATED.

SHUT IN WELL AND SHUT DOWN

DISCUSS DRILLS

CREW TRAVEL

WAITING ON 4 1/2" BTS-8 X 4 1/2" TSHP-SR SUB TO BE BUILT AND COATED.

NO ACTIVITY

Report Start Date: 3/30/2014

Com

Well shut in- No activity on location

Report Start Date: 3/31/2014

Com

Well shut in, no activity.

Crew travel to location.

JSA

RIH with final 5 joints 4.5" 12.75# tbg.

Latch onto pkr pulled 15k up and sat 15k down. String weight 120k.

Circulate Baker recommended pkr fluid around well bore (conventionally)(mixed in fresh water).

Calculate space out, install subs (below top joint), and new double pin below hanger. Attempted to latch onto pkr (unable to latch), swapped out a shorter joint for a longer joint, SWH, SDFN

Crew travel home.

Well shut in, no activity.

Report Start Date: 4/1/2014

Com

WELL SHUT-IN NO ACTIVITY

CREW TRAVEL TO LOCATION

JSA REVIEW/SAFETY MTG

OPEN VALVES/RAM, SICP 0 PSI, SITP 0 PSI, INSPECT ELEVATOR AND LIFTING DEVICE
TIH HOLE WITH 3-1/2 TBG ATTEMPT TO LATCH ON TO ON & OFF TOOL.

TOH AND UNSCREW TBG HANGER, LAY-DOWN TBG HANGER.

RIG-UP REVERSE UNIT PUMP, CC HOLE WITH PKR FLUID, 180 BBL CIRCULATE WITH 3 BPM. HOLE CIRCULATE WITH 2 BOTTOMS-UP.

TIH AND LATCH ONTO ON/OFF TOOL PULL 15-20 POINT ABOVE 130K. TBG IS FULL LATCHED ONTO ON/OFF TOOL.

NOTE

PULL WEIGHT IS 120K DOWN AND 130K UP

SPACE-UP AND LAND TBG.HANGER

CREW REST FOR LUNCH

INITIAL MIT TEST, PRESSURE-UP WELL TO 500 PSI, HOLD FOR 30 MINUTES BOTH TBG,CSG & ON/OFF TOOL HOLD.

MEASURE PIN AROUND 7.5" FLANGE; 6 PINS MEASURED @ 4" IN AND 5" OUT

INSTALLED BPV,RIG-DOWN RIG FLOOR, N/D BOP AND RELEASE BOP.

N/U TREE ON WELL

TREE CONFIGURATION:

FROM BOTTOM; LATCH 7-1/16" BY 4-1/16" 5000 PSI WITH RX-46 SS GASKET ONTO 7-1/16" WELL HEAD, ON-TOP OF THE 7-1/16" TREE FLANGE IS 4-1/16" 5000 PSI GATE VALVE, THEN ANOTHER 4-1/16" 5000 PSI GATE VALVE, 5000 PSI RATING 4-1/16" (T) WITH 5000 PSI CHECK VALVE, ANOTHER 4-1/16" 5000 SPI GATE VALVE AND 5000 PSI 4-1/16" SWAB VALVE AT THE VERY TOP.

****NOTE***

ALL VALVES API # 6A-0656

MODEL: M EXPANDING GATE VALVE.



Summary Report

Major Rig Work Over (MRWO)

Fishing

Job Start Date: 1/7/2014

Job End Date: 4/3/2014

Well Name NEW MEXICO 'O' STATE NCT-1 040		Lease New Mexico 'O' State NCT-1	Field Name Vacuum	Business Unit Mid-Continent	
Ground Elevation (ft) 3,394.00	Original RKB (ft) 3,419.00	Current RKB Elevation 3,419.00, <elvdttmstart>		Mud Line Elevation (ft)	Water Depth (ft)

Com

LOAD WELLHEAD SEAL WITH HYDRAULIC FLUID, PRESSURE-UP 7.5" WELLHEAD FLANGE TO 5000 PSI, HOLD FOR 15 MINUTES. SEAL TEST GOOD.

CREW TRAVEL OFF LOCATION

WELL SHUT-IN NO ACTIVITY

Report Start Date: 4/2/2014

Com

WELL SHUT-IN NO ACTIVITY

CREW TRAVEL TO LOCATION

JSA REVIEW/SAFETY MTG

OPEN VALVES/RAM SICP 0 PSI, SITP 0 PSI
REMOVE BPV, INSTALL TWO CHECK VALVE.

RIG-UP TESTER, TEST TREE TO 5000 PSI, HOLD FOR 15 MINUTES, RIG-DOWN TESTER

PRESSURE-UP TBG TO 2500 PSI AND HOLD FOR 15 MINUTES

RIG-UP SLICK LINE AND RIH, PUNCH HOLE ON BLANKING PLUG, ROH WITH SLICK LINE CHANGE-OUT TOOL, RIH AND GRAB FISH PLUG.

RIG-DOWN SLICK LINE UNIT

****CHART MIT TEST****

CONNECT PRESSURE CHART EQUIPMENT,PRESSURE-UP WELL TO 550 PSI AND HOLD FOR 35 MINUTES. BLEED DOWN PRESSURE.

*****NOTE*****

STATE OCD REP. WILLIAM BILL SONNAMAKER WAVE INSPECTION @ 10:15AM ON 4/2/2014.

PHONE NUMBER: 575-370-3182.

TEST CHART SIGNED AND DELIVER TO; RIMY ALVARADO, BUCKEYE FMT OA @ 2:30 PM ON 4/2/2014.

RELEASE RENTER EQUIPMENTS, HAUL UNUSED NEW PIPES OFF LOCATION, RETURN PIPES TO 1788 FOR CREDIT.

...WELL SHUT-IN AND SECURE FOR THE NIGHT

CREW TRAVEL OFF LOCATION

Report Start Date: 4/3/2014

Com

WELL SUT IN NO ACTIVITY

CREW TRAVEL TO LOCATION

Tenant #3, E-COLORS. Hazard of the day.Focus on job.
Discussed Stop Work Authority (SWA). SSE. Crush Point.
House keeping.

RD PULLING UNIT & MOVE OFF LOCATION