

District I
1625 N. French Dr., Hobbs, NM 88241
Phone: (505) 393-6161 Fax: (505) 393-0720
District II
811 S. First St., Artesia, NM 88210
Phone: (505) 748-1283 Fax: (505) 748-0720
District III
1000 Rio Brazos Road, Aztec, NM 87410
Phone: (505) 334-6178 Fax: (505) 334-6170
District IV
1220 S. St. Francis Dr., Santa Fe, NM 87505
Phone: (505) 476-3460 Fax: (505) 476-3462

HOBBS OCD
MAY 27 2014
RECEIVED

State of New Mexico
Energy, Minerals & Natural Resources Department
OIL CONSERVATION DIVISION
1220 South St. Francis Dr.
Santa Fe, NM 87505

Form C-102
Revised August 1, 2011
Submit one copy to appropriate
District Office

☐ AMENDED REPORT

WELL LOCATION AND ACREAGE DEDICATION PLAT

| | | | |
|--|--|--|---|
| ¹ API Number 30-025-41864 | | ² Pool Code 96341 | ³ Pool Name CINTA ROJA, DELAWARE |
| ⁴ Property Code 319900 | ⁵ Property Name SWEETNESS 30 STATE FED COM | | ⁶ Well Number 1H |
| ⁷ OGRID No. 6137 | ⁸ Operator Name DEVON ENERGY PRODUCTION COMPANY, L.P. | | ⁹ Elevation 3422.6 |

¹⁰ Surface Location

| UL or lot no. | Section | Township | Range | Lot Idn | Feet from the | North/South line | Feet from the | East/West line | County |
|---------------|-----------|-------------|-------------|---------|---------------|------------------|---------------|----------------|------------|
| G | 30 | 23 S | 35 E | | 1650 | NORTH | 1887 | EAST | LEA |

¹¹ Bottom Hole Location If Different From Surface

| UL or lot no. | Section | Township | Range | Lot Idn | Feet from the | North/South line | Feet from the | East/West line | County |
|---------------|-----------|-------------|-------------|---------|---------------|------------------|---------------|----------------|------------|
| O | 31 | 23 S | 35 E | | 330 | SOUTH | 1887 | EAST | LEA |

| | | | |
|---|-------------------------------|----------------------------------|-------------------------|
| ¹² Dedicated Acres 280 | ¹³ Joint or Infill | ¹⁴ Consolidation Code | ¹⁵ Order No. |
|---|-------------------------------|----------------------------------|-------------------------|

No allowable will be assigned to this completion until all interests have been consolidated or a non-standard unit has been approved by the division.

PP: 1650 FNL & 1887 FEL

¹⁷ OPERATOR CERTIFICATION

I hereby certify that the information contained herein is true and complete to the best of my knowledge and belief, and that this organization either owns a working interest or unleased mineral interest in the land including the proposed bottom hole location or has a right to drill this well at this location pursuant to a contract with an owner of such a mineral or working interest, or to a voluntary pooling agreement or a compulsory pooling order heretofore entered by the division.

[Signature] **2/13/2014**
Signature Date
David H. Cook Regulatory Specialist
Printed Name
david.cook@dmv.com
E-mail Address

¹⁸ SURVEYOR CERTIFICATION

I hereby certify that the well location shown on this plat was plotted from field notes of actual surveys made by me or under my supervision, and that the same is true and correct to the best of my belief.

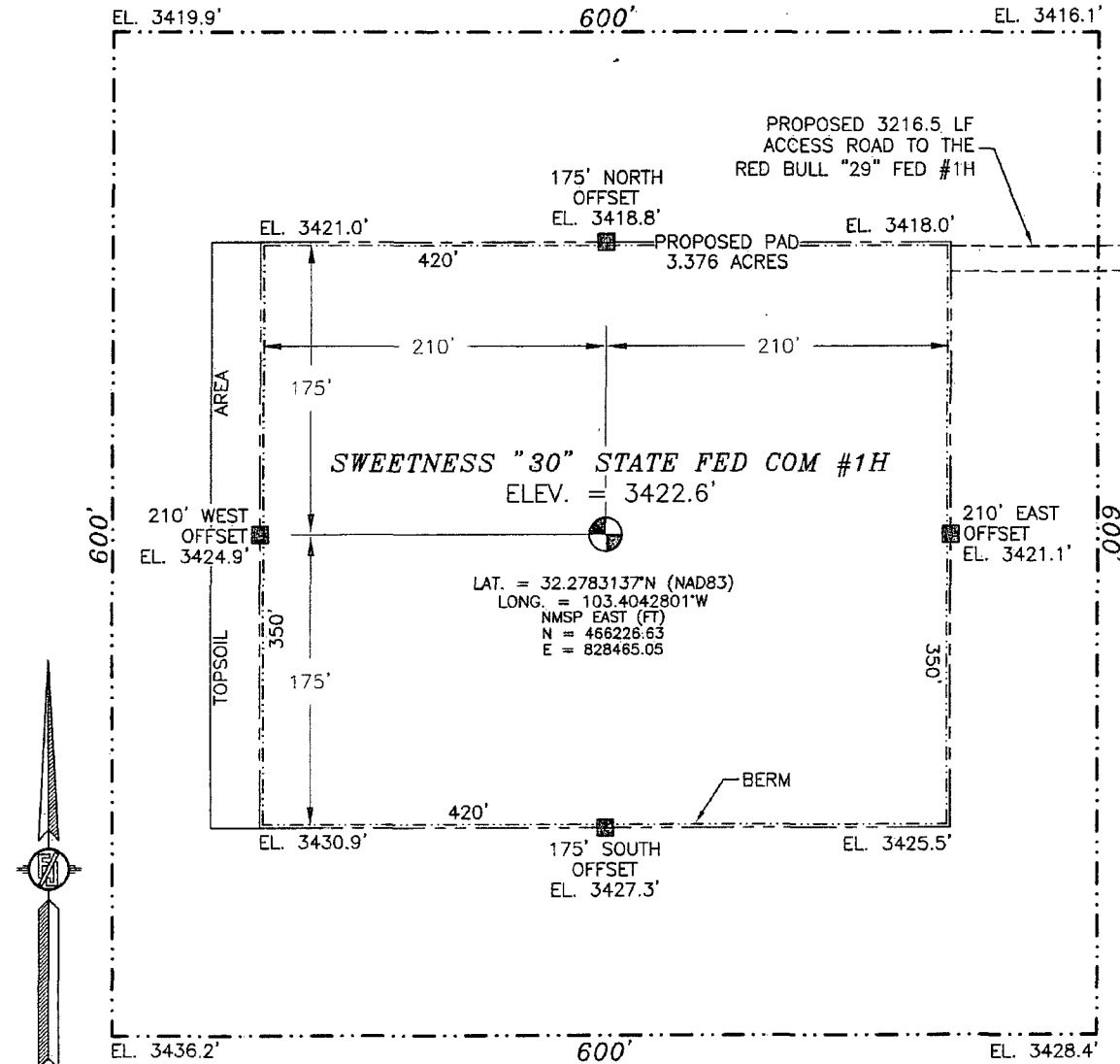
JANUARY 11, 2014
Date of Survey
[Signature]
Signature and Seal of Professional Surveyor
Certificate Number: **EDMON F. JARAMILLO, PLS 12797**
SURVEY NO. 2550

MAY 27 2014

pm.

SECTION 30, TOWNSHIP 23 SOUTH, RANGE 35 EAST, N.M.P.M.
LEA COUNTY, STATE OF NEW MEXICO
SITE MAP

NOTE: LATITUDE AND LONGITUDE COORDINATES ARE SHOWN USING THE NORTH AMERICAN DATUM OF 1983 (NAD83). LISTED NEW MEXICO STATE PLANE EAST COORDINATES ARE GRID (NAD83). BASIS OF BEARING AND DISTANCES USED ARE NEW MEXICO STATE PLANE EAST COORDINATES MODIFIED TO THE SURFACE



010 50 100 200

SCALE 1" = 100'

DIRECTIONS TO LOCATION

FROM THE INTERSECTION OF CR 21 (DELAWARE BASIN ROAD) AND ANTELOPE ROAD GO EAST ON CR 21 APPROX. 4.2 MILES TO A LEASE ROAD ON RIGHT (SOUTH), GO SOUTH ON LEASE ROAD APPROX. 3.0 MILES, TURN RIGHT (WEST) AT FRAC POND. GO WEST APPROX. 1.0 MILES TO AN EXISTING PAD, AT SOUTHEAST CORNER OF PAD FOLLOW ROAD LATHS 3216.5' TO LOCATION.

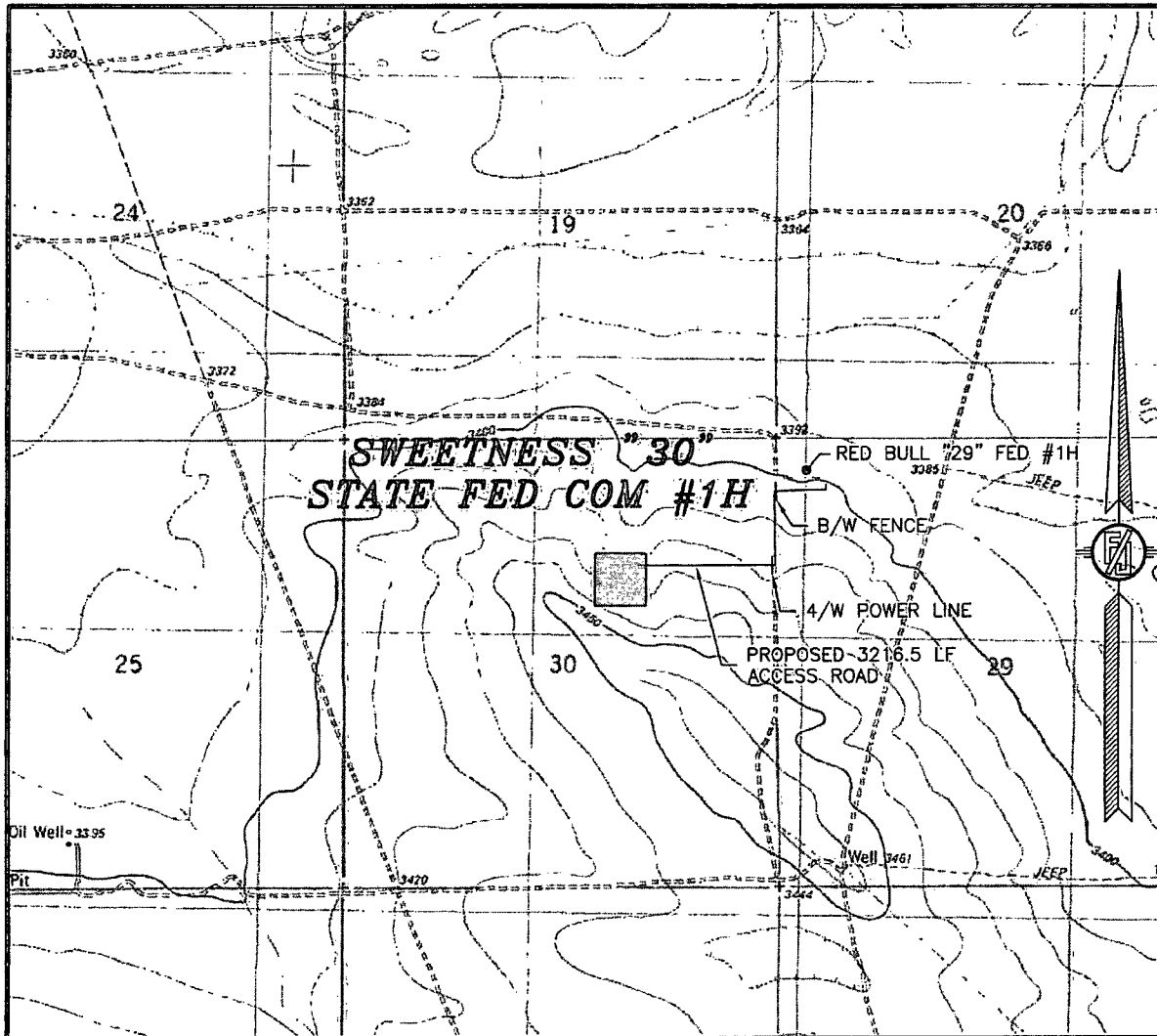
DEVON ENERGY PRODUCTION COMPANY, L.P.
SWEETNESS "30" STATE FED COM #1H
LOCATED 1650 FT. FROM THE NORTH LINE
AND 1887 FT. FROM THE EAST LINE OF
SECTION 30, TOWNSHIP 23 SOUTH,
RANGE 35 EAST, N.M.P.M.
LEA COUNTY, STATE OF NEW MEXICO

JANUARY 11, 2014

SURVEY NO. 2550

MADRON SURVEYING, INC. 301 SOUTH CANAL (575) 234-3341 CARLSBAD, NEW MEXICO

SECTION 30, TOWNSHIP 23 SOUTH, RANGE 35 EAST, N.M.P.M.
LEA COUNTY, STATE OF NEW MEXICO
LOCATION VERIFICATION MAP



USGS QUAD MAP:
SAN SIMON SINK

NOT TO SCALE

DEVON ENERGY PRODUCTION COMPANY, L.P.
SWEETNESS "30" STATE FED COM #1H
LOCATED 1650 FT. FROM THE NORTH LINE
AND 1887 FT. FROM THE EAST LINE OF
SECTION 30, TOWNSHIP 23 SOUTH,
RANGE 35 EAST, N.M.P.M.
LEA COUNTY, STATE OF NEW MEXICO

JANUARY 11, 2014

MADRON SURVEYING, INC. 301 SOUTH CANAL (575) 234-3341 CARLSBAD, NEW MEXICO SURVEY NO. 2550

SWEETNESS "30"
STATE FED COM #1H

CR 21 (DELAWARE BASIN)

4.2 MILES

5.0 MILES

1.0 MILES

3216.5'

Antelope Road

Simon Ridge

Sweetness Sink

Pipeline

Gravel Pit

Ochoa

1044

1077

1050

1065

1072

1079

1085

1092

1099

1106

1113

1120

1127

1134

1141

1148

1155

1162

1169

1176

1183

1190

1197

1204

1211

1218

1225

1232

1239

1246

1253

1260

1267

1274

1281

1288

1295

1302

1309

1316

1323

1330

1337

1344

1351

1358

1365

1372

1379

1386

1393

1400

1407

1414

1421

1428

1435

1442

1449

1456

1463

1470

1477

1484

1491

1498

1505

1512

1519

1526

1533

1540

1547

1554

1561

1568

1575

1582

1589

1596

1603

1610

1617

1624

1631

1638

1645

1652

1659

1666

1673

1680

1687

1694

1701

1708

1715

1722

1729

1736

1743

1750

1757

1764

1771

1778

1785

1792

1799

1806

1813

1820

1827

1834

1841

1848

1855

1862

1869

1876

1883

1890

1897

1904

1911

1918

1925

1932

1939

1946

1953

1960

1967

1974

1981

1988

1995

2002

2009

2016

2023

2030

2037

2044

2051

2058

2065

2072

2079

2086

2093

2100

2107

2114

2121

2128

2135

2142

2149

2156

2163

2170

2177

2184

2191

2198

2205

2212

2219

2226

2233

2240

2247

2254

2261

2268

2275

2282

2289

2296

2303

2310

2317

2324

2331

2338

2345

2352

2359

2366

2373

2380

2387

2394

2401

2408

2415

2422

2429

2436

2443

2450

2457

2464

2471

2478

2485

2492

2499

2506

2513

2520

2527

2534

2541

2548

2555

2562

2569

2576

2583

2590

2597

2604

2611

2618

2625

2632

2639

2646

2653

2660

2667

2674

2681

2688

2695

2702

2709

2716

2723

2730

2737

2744

2751

2758

2765

2772

2779

2786

2793

2800

2807

2814

2821

2828

2835

2842

2849

2856

2863

2870

2877

2884

2891

2898

2905

2912

2919

2926

2933

2940

2947

2954

2961

2968

2975

2982

2989

2996

3003

3010

3017

3024

3031

3038

3045

3052

3059

3066

3073

3080

3087

3094

3101

3108

3115

3122

3129

3136

3143

3150

3157

3164

3171

3178

3185

3192

3199

3206

3213

3220

3227

3234

3241

3248

3255

3262

3269

3276

3283

3290

3297

3304

3311

3318

3325

3332

3339

3346

3353

3360

3367

3374

3381

3388

3395

3402

3409

3416

3423

3430

3437

3444

3451

3458

3465

3472

3479

3486

3493

3500

3507

3514

3521

3528

3535

3542

3549

3556

3563

3570

3577

3584

3591

3598

3605

3612

3619

3626

3633

3640

3647

3654

3661

3668

3675

3682

3689

3696

3703

3710

3717

3724

3731

3738

3745

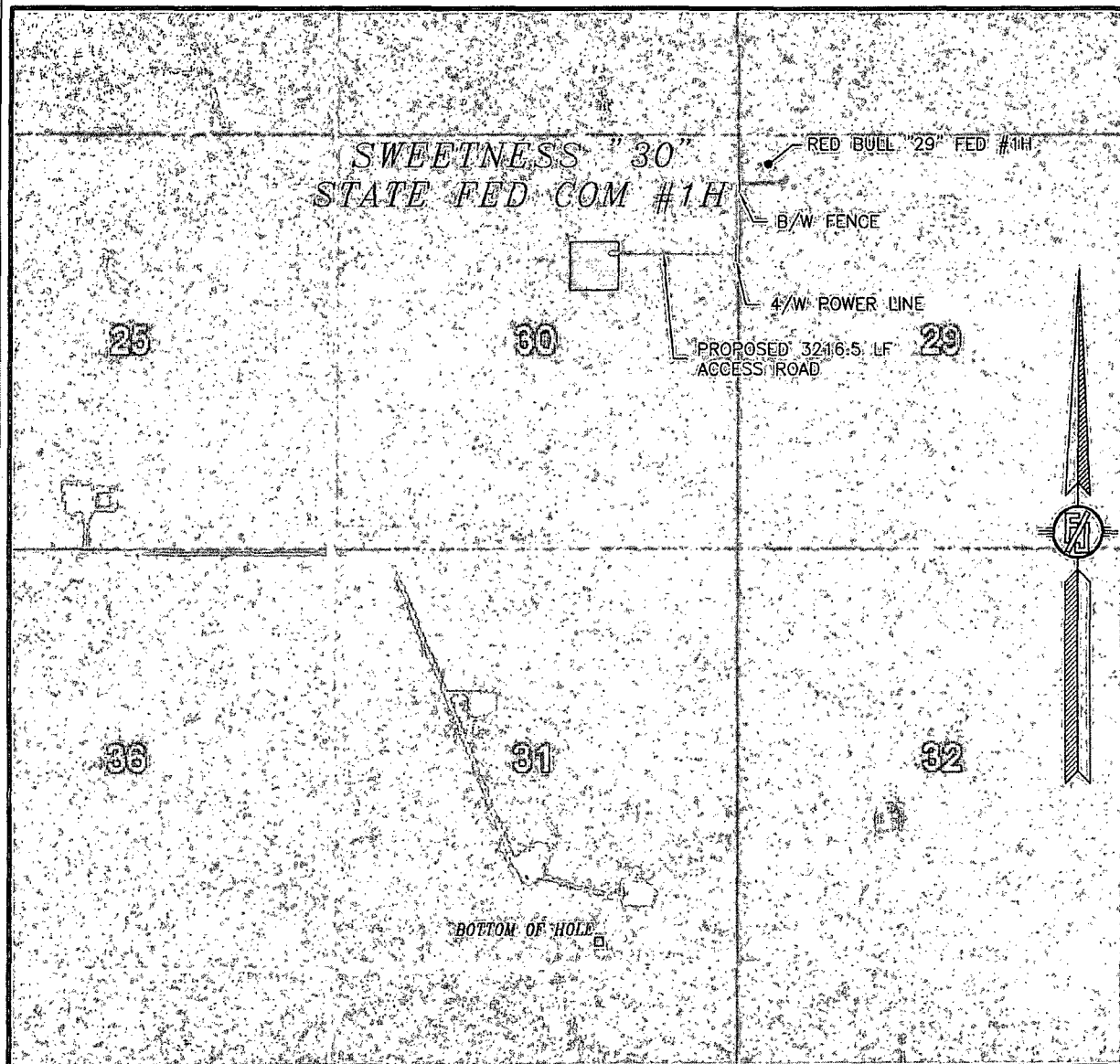
3

DIRECTIONS TO LOCATION
FROM THE INTERSECTION OF CR 21 (DELAWARE BASIN ROAD) AND ANTELOPE ROAD GO EAST ON CR 21 APPROX. 4.2 MILES TO A LEASE ROAD ON RIGHT (SOUTH), GO SOUTH ON LEASE ROAD APPROX. 3.0 MILES, TURN RIGHT (WEST) AT FRAC POND. GO WEST APPROX. 1.0 MILES TO AN EXISTING PAD, AT SOUTHEAST CORNER OF PAD FOLLOW ROAD LATHS 3216.5' TO LOCATION.

SURVEY NO. 2550

MADRON SURVEYING, INC. 301 SOUTH CANAL (575) 234-3341 CARLSBAD, NEW MEXICO

SECTION 30, TOWNSHIP 23 SOUTH, RANGE 35 EAST, N.M.P.M.
LEA COUNTY, STATE OF NEW MEXICO
AERIAL PHOTO



NOT TO SCALE
AERIAL PHOTO:
GOOGLE EARTH
MARCH 2012

DEVON ENERGY PRODUCTION COMPANY, L.P.
SWEETNESS "30" STATE FED COM #1H
LOCATED 1650 FT. FROM THE NORTH LINE
AND 1887 FT. FROM THE EAST LINE OF
SECTION 30, TOWNSHIP 23 SOUTH,
RANGE 35 EAST, N.M.P.M.
LEA COUNTY, STATE OF NEW MEXICO

JANUARY 11, 2014

SURVEY NO. 2550

MADRON SURVEYING, INC. 301 SOUTH CANAL (575) 234-3341 CARLSBAD, NEW MEXICO

