

DISTRICT I
1625 N. French Dr., Hobbs, NM 88240
Phone (505) 393-6161 Fax: (505) 393-0720

DISTRICT II
611 S. First St., Artesia, NM 88210
Phone (505) 748-1253 Fax: (505) 748-9720

DISTRICT III
1000 Rio Brazos Rd., Aztec, NM 87410
Phone (505) 834-6176 Fax: (505) 834-6170

DISTRICT IV
1820 S. St. Francis Dr., Santa Fe, NM 87505
Phone (505) 476-3460 Fax: (505) 476-3462

State of New Mexico
Energy, Minerals and Natural Resources Department

OIL CONSERVATION DIVISION

1220 South St. Francis Dr.
Santa Fe, New Mexico 87505

Form C-102

Revised August 1, 2011

HOBBS OGD

Submit one copy to appropriate
District Office

MAY 29 2014

WELL LOCATION AND ACREAGE DEDICATION PLAT RECEIVED AMENDED REPORT

API Number 30-025 - 41857	Pool Code 55 610	Pool Name SCHARB Wildcat; Bone Spring
Property Code	Property Name TEAL 12 STATE	Well Number 1H
GRID No. 215099	Operator Name CIMAREX ENERGY CO.	Elevation 3958

Surface Location

UL or lot No.	Section	Township	Range	Lot Idn	USat from the	North/South line	USat from the	East/West line	County
M	12	19 S	34 E		330	SOUTH	660	WEST	LEA

Bottom Hole Location If Different From Surface

UL or lot No.	Section	Township	Range	Lot Idn	USat from the	North/South line	USat from the	East/West line	County
D	12	19 S	34 E		330	NORTH	660	WEST	LEA

Dedicated Acres 160	Joint or Infill	Consolidation Code	Order No.
------------------------	-----------------	--------------------	-----------

NO ALLOWABLE WILL BE ASSIGNED TO THIS COMPLETION UNTIL ALL INTERESTS HAVE BEEN CONSOLIDATED
OR A NON-STANDARD UNIT HAS BEEN APPROVED BY THE DIVISION

<p>N: 612896.2 E: 790840.4 (NAD83)</p> <p>660'</p> <p>330'</p> <p>B.H.</p>	<p>N: 812896.5 E: 793495.5 (NAD83)</p> <p>PROPOSED BOTTOM HOLE LOCATION</p> <p>Lat - N 32°40'52.35" Long - W 103°31'12.93" NMSPEC- N 612513.1 E 791503.1 (NAD-83)</p>	<p>N: 812896.5 E: 796127.2 (NAD83)</p>	<p>OPERATOR CERTIFICATION</p> <p>I hereby certify that the information contained herein is true and complete to the best of my knowledge and belief, and that this organization either owns a working interest or unleased mineral interest in the land including the proposed bottom hole location or has a right to drill this well at this location pursuant to a contract with an owner of such a mineral or working interest, or to a voluntary pooling agreement or a compulsory pooling order heretofore entered by the division.</p> <p><i>Aricka Easterling</i> 5/22/14 Signature Date</p> <p>Aricka Easterling Printed Name aeasterling@cimarex.com Email Address</p>
<p>N: 607857.9 E: 790896.8 (NAD83)</p> <p>660'</p> <p>330'</p> <p>S.L.</p>	<p>N: 607894.3 E: 791544.0 (NAD-83)</p> <p>SURFACE LOCATION</p> <p>Lat - N 32°40'06.65" Long - W 103°31'12.87" NMSPEC- N 607894.3 E 791544.0 (NAD-83)</p>	<p>N: 607810.4 E: 796170.3 (NAD83)</p>	<p>SURVEYOR CERTIFICATION</p> <p>I hereby certify that the well location shown on this plat was plotted from field notes of actual surveys made by me or under my supervision and that the same is true and correct to the best of my belief.</p> <p>OCT 29 2013</p> <p>Date Surveyed</p> <p>Signature of Professional Surveyor</p> <p>Certificate No. 7977</p> <p>Scale: 1" = 1000'</p> <p>WO Num.: 29645</p>

MAY 29 2014

Drilling 12-1/4" hole
below 13 3/8" Casing

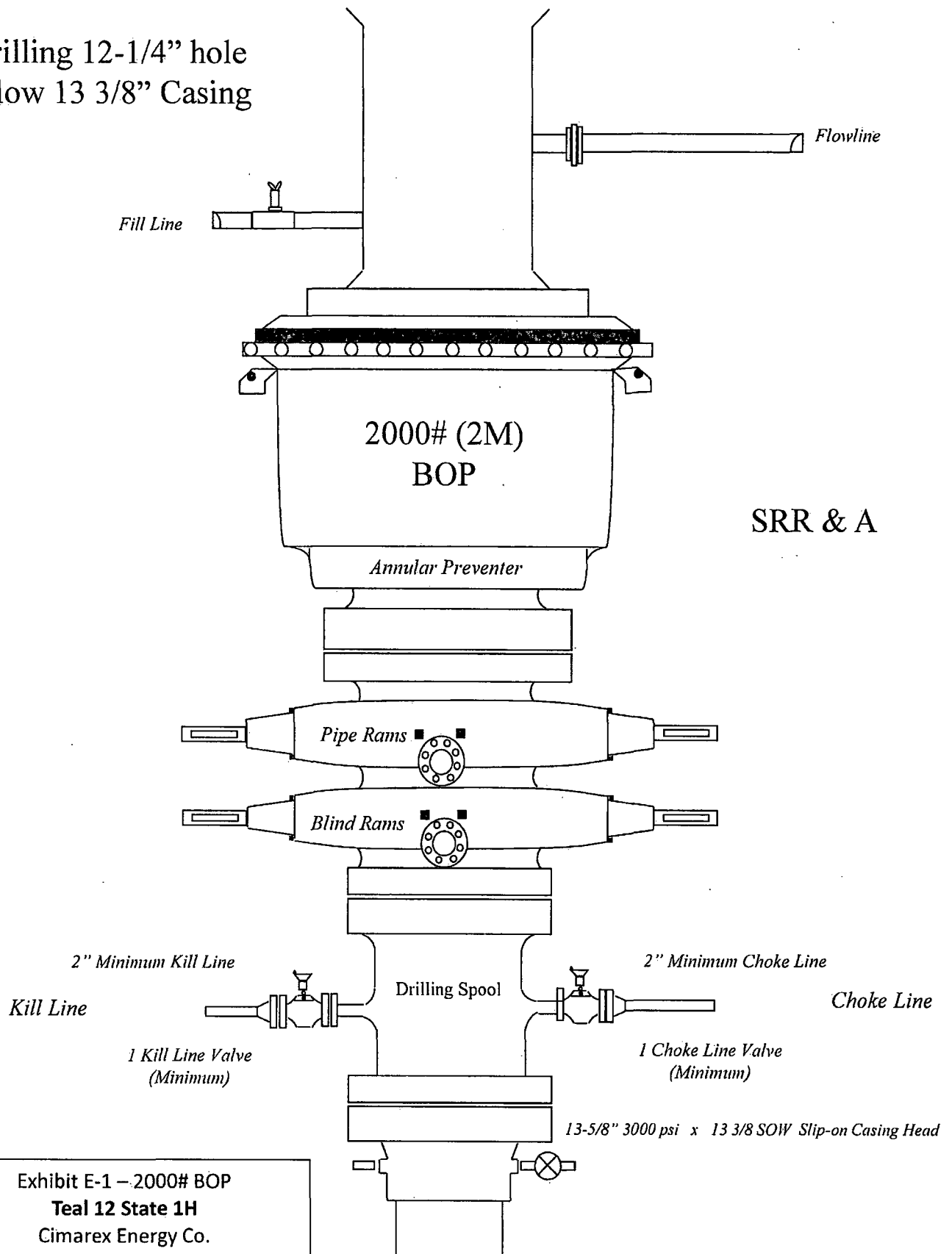
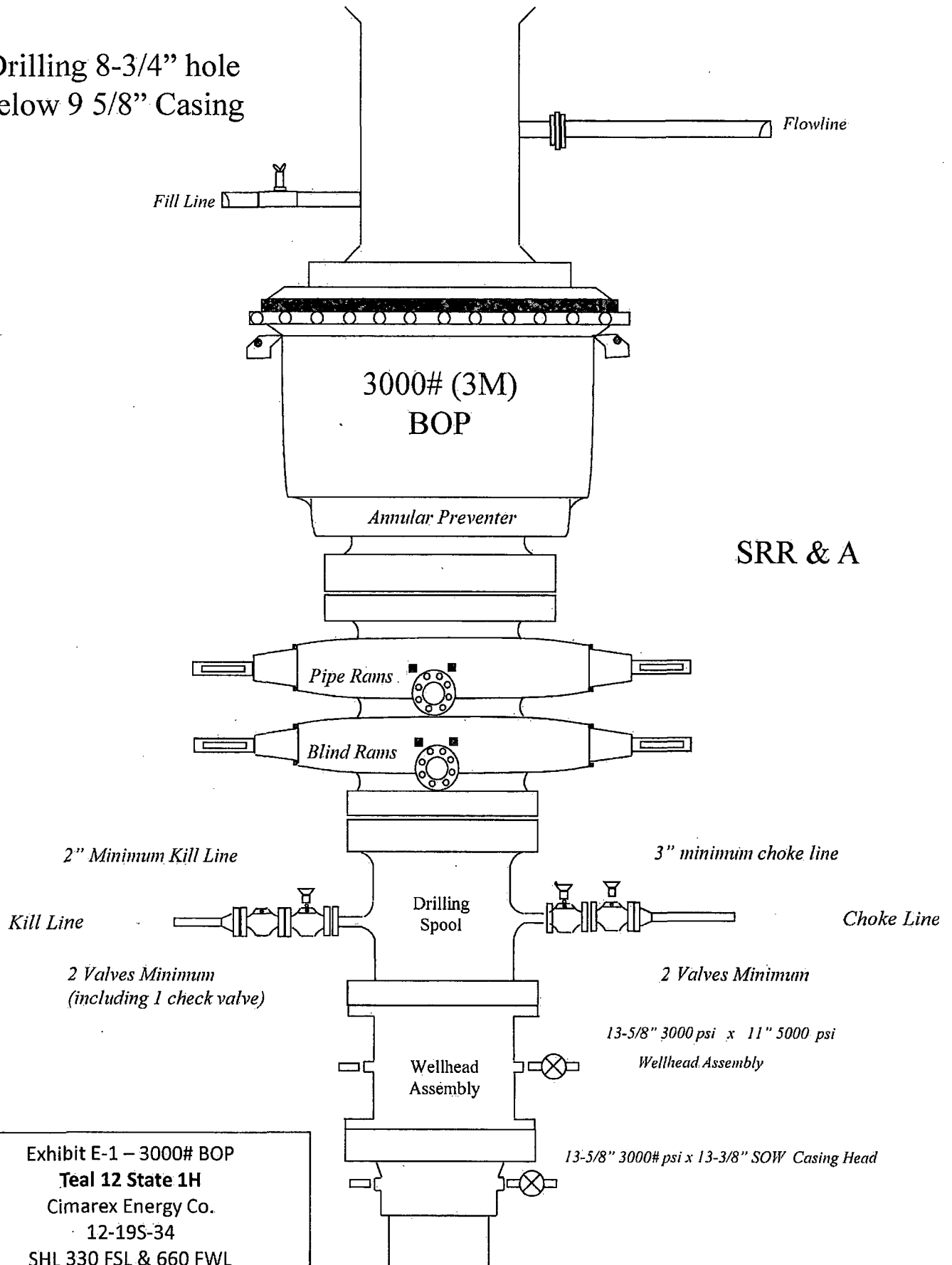


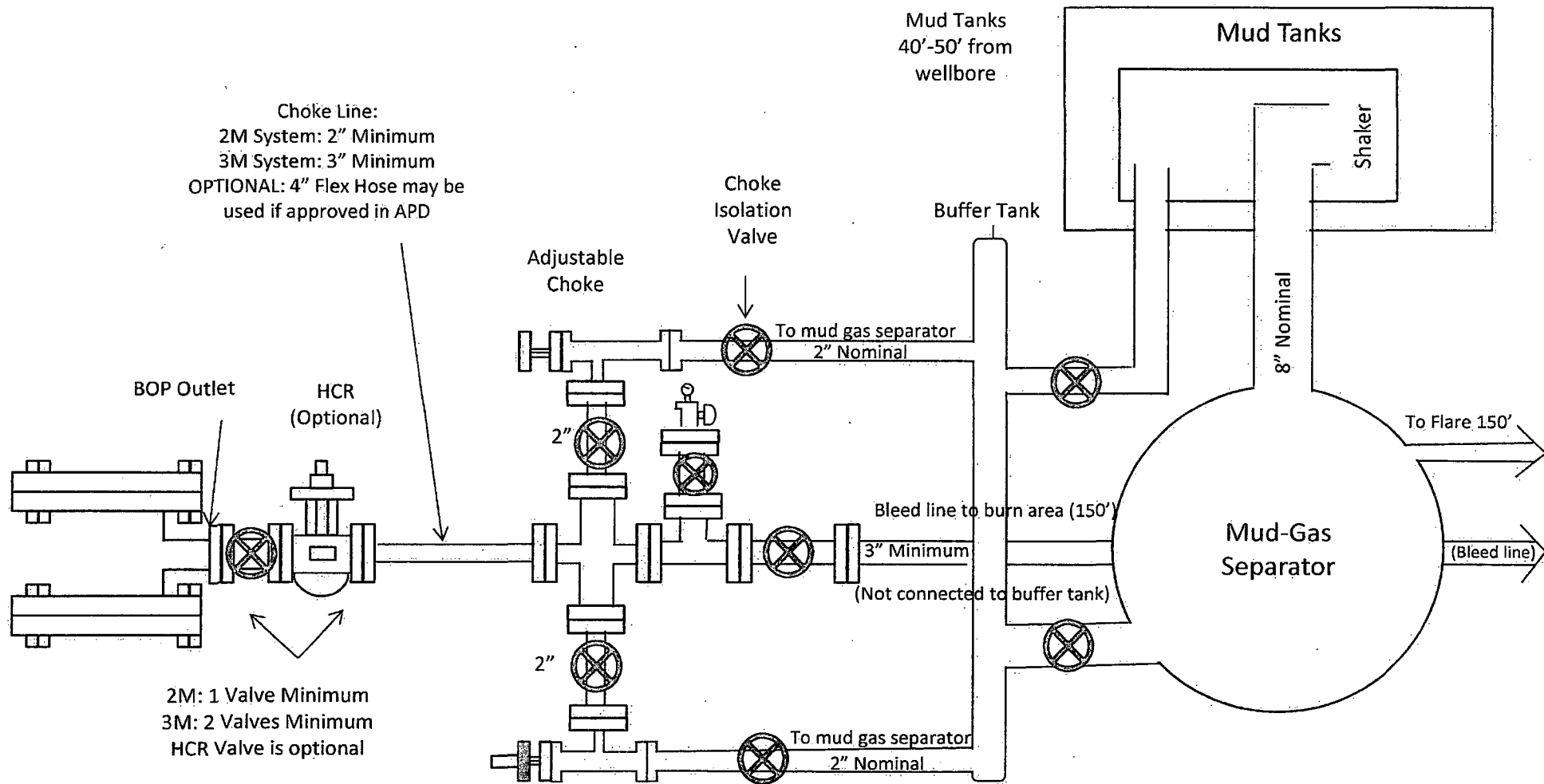
Exhibit E-1 – 2000# BOP
Teal 12 State 1H
Cimarex Energy Co.
12-19S-34
SHL 330 FSL & 660 FWL
BHL 330 FNL & 660 FWL
Lea County, NM

Drilling 8-3/4" hole
below 9 5/8" Casing



SRR & A

Exhibit E-1 – 3000# BOP
Teal 12 State 1H
Cimarex Energy Co.
12-19S-34
SHL 330 FSL & 660 FWL
BHL 330 FNL & 660 FWL
Lea County, NM



Drilling Operations Choke Manifold 2M/3M Service

Exhibit E-1 – Choke Manifold Diagram
Teal 12 State 1H
Cimarex Energy Co.
12-19S-34
SHL 330 FSL & 660 FWL
BHL 330 FNL & 660 FWL
Lea County, NM