

DISTRICT I
1625 N. French Dr., Hobbs, NM 88240
Phone: (575) 393-6161 Fax: (575) 393-6162

DISTRICT II
811 S. First St., Artesia, NM 88210
Phone: (575) 748-1283 Fax: (575) 748-9720

DISTRICT III
1000 Rio Brizos Road, Aztec, NM 87410
Phone: (505) 334-6178 Fax: (505) 334-6170

DISTRICT IV
1220 S. St. Francis Dr., Santa Fe, NM 87505
Phone: (505) 476-3460 Fax: (505) 476-3460

HOBBS OCD

MAY 21 2014

RECEIVED

State of New Mexico
Energy, Minerals & Natural Resources Department
OIL CONSERVATION DIVISION
1220 South St. Francis Dr.
Santa Fe, New Mexico 87505

Form C-102
Revised August 1, 2011
Submit one copy to appropriate
District Office

AMENDED REPORT

WELL LOCATION AND ACREAGE DEDICATION PLAT

API Number 30-025-41882	Pool Code	Pool Name Gem; Bone Spring
Property Code 313263	Property Name FEDERAL 30	Well Number 3H
OGRID No. 258462	Operator Name NADEL AND GUSSMAN HEYCO, LLC	Elevation 3600'

Surface Location

UL or lot No.	Section	Township	Range	Lot Idn	Feet from the	North/South line	Feet from the	East/West line	County
A	30	19-S	33-E		330	NORTH	710	EAST	LEA

Bottom Hole Location If Different From Surface

UL or lot No.	Section	Township	Range	Lot Idn	Feet from the	North/South line	Feet from the	East/West line	County
P	30	19-S	33-E		330	SOUTH	510	EAST	LEA

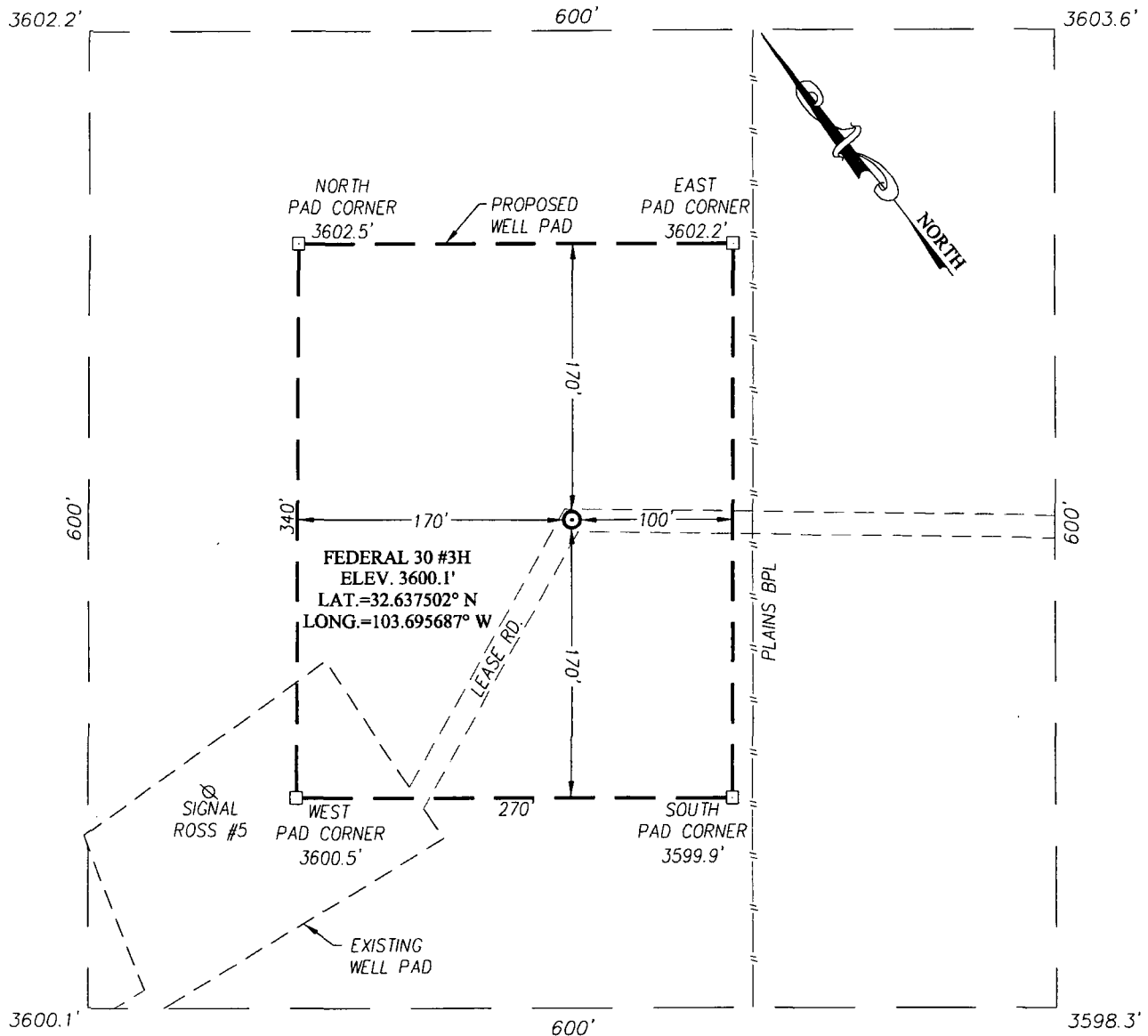
Dedicated Acres 160	Joint or Infill	Consolidation Code	Order No.
-------------------------------	-----------------	--------------------	-----------

NO ALLOWABLE WILL BE ASSIGNED TO THIS COMPLETION UNTIL ALL INTERESTS HAVE BEEN CONSOLIDATED OR A NON-STANDARD UNIT HAS BEEN APPROVED BY THE DIVISION

<p>40.94 AC. 2</p> <p>40.81 AC. 3</p> <p>40.69 AC. 4</p> <p>40.56 AC.</p>	<p>3602.2'</p> <p>3600.1'</p> <p>3603.6'</p> <p>3598.3'</p> <p>600'</p> <p>600'</p> <p>DETAIL</p>	<p>A</p> <p>B</p> <p>330'</p> <p>710'</p> <p>SEE DETAIL</p> <p>GRID. AZ. = 177°16'55"</p> <p>HORIZ. DIST. = 4628.3'</p> <p>510'</p> <p>B.H.</p> <p>330'</p> <p>C</p> <p>D</p>	<p>OPERATOR CERTIFICATION</p> <p>I hereby certify that the information herein is true and complete to the best of my knowledge and belief, and that this organization either owns a working interest or unleased mineral interest in the land including the proposed bottom hole location or has a right to drill this well at this location pursuant to a contract with an owner of such mineral or working interest, or to a voluntary pooling agreement or a compulsory pooling order heretofore entered by the division.</p> <p><i>Jason Goss</i> 1/10/13 Signature Date Jason Goss Printed Name jgoss@naguss.com E-mail Address</p> <p>SURVEYOR CERTIFICATION</p> <p>I hereby certify that the well location shown on this plat was plotted from field notes of actual surveys made by me or under my supervision, and that the same is true and correct to the best of my belief.</p> <p>DECEMBER 3, 2012</p> <p>Date of Survey Signature & Seal of Professional Surveyor: <i>Ronald J. Eidson</i> 12/10/2012 Certificate Number... Gary O. Eidson 12641 Ronald J. Eidson 3239 AF JWSC W.O.: 12.11.1987</p>
	<p>GEODETIC COORDINATES NAD 27 NME</p> <p>SURFACE LOCATION Y=596223.8 N X=696288.9 E</p> <p>LAT.=32.637502° N LONG.=103.695687° W</p> <p>BOTTOM HOLE LOCATION Y=591601.8 N X=696508.2 E</p> <p>CORNER COORDINATES TABLE A - Y=596550.5 N, X=695677.1 E B - Y=596557.5 N, X=696997.4 E C - Y=591267.1 N, X=695698.2 E D - Y=591274.9 N, X=697019.4 E</p>		

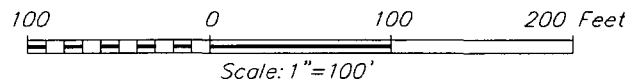
JUN 02 2014

SECTION 30, TOWNSHIP 19 SOUTH, RANGE 33 EAST, N.M.P.M.
LEA COUNTY **NEW MEXICO**



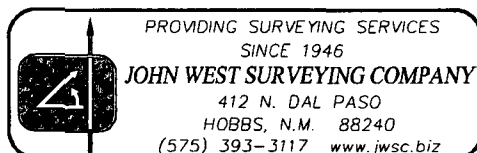
DIRECTIONS TO LOCATION

FROM THE INTERSECTION OF CO. RD. #31 (MALJAMAR) AND CO. RD. L-126 (DRY LAKE RD.) GO EAST ON LEASE ROAD APPROX. 5.1 MILES. TURN RIGHT AND GO SOUTHEAST APPROX. 1.55 MILES. TURN RIGHT AND GO SOUTHWEST APPROX. 0.2 MILES. TURN LEFT AT "Y" AND GO APPROX. 450 FEET SOUTH. TURN LEFT AND GO EAST APPROX. 800 FEET TO THE P&A PAD AND THIS LOCATION.



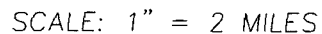
NADEL AND GUSSMAN HEYCO, LLC

FEDERAL 30 #3H WELL
 LOCATED 330 FEET FROM THE NORTH LINE
 AND 710 FEET FROM THE EAST LINE OF SECTION 30,
 TOWNSHIP 19 SOUTH, RANGE 33 EAST, N.M.P.M.,
 LEA COUNTY, NEW MEXICO

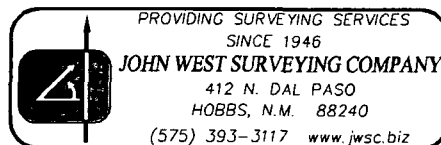


Survey Date: 12/3/12	CAD Date: 12/7/12	Drawn By: AF
W.O. No.: 12111987	Rev: .	Rel. W.O.: .
Sheet 1 of 1		

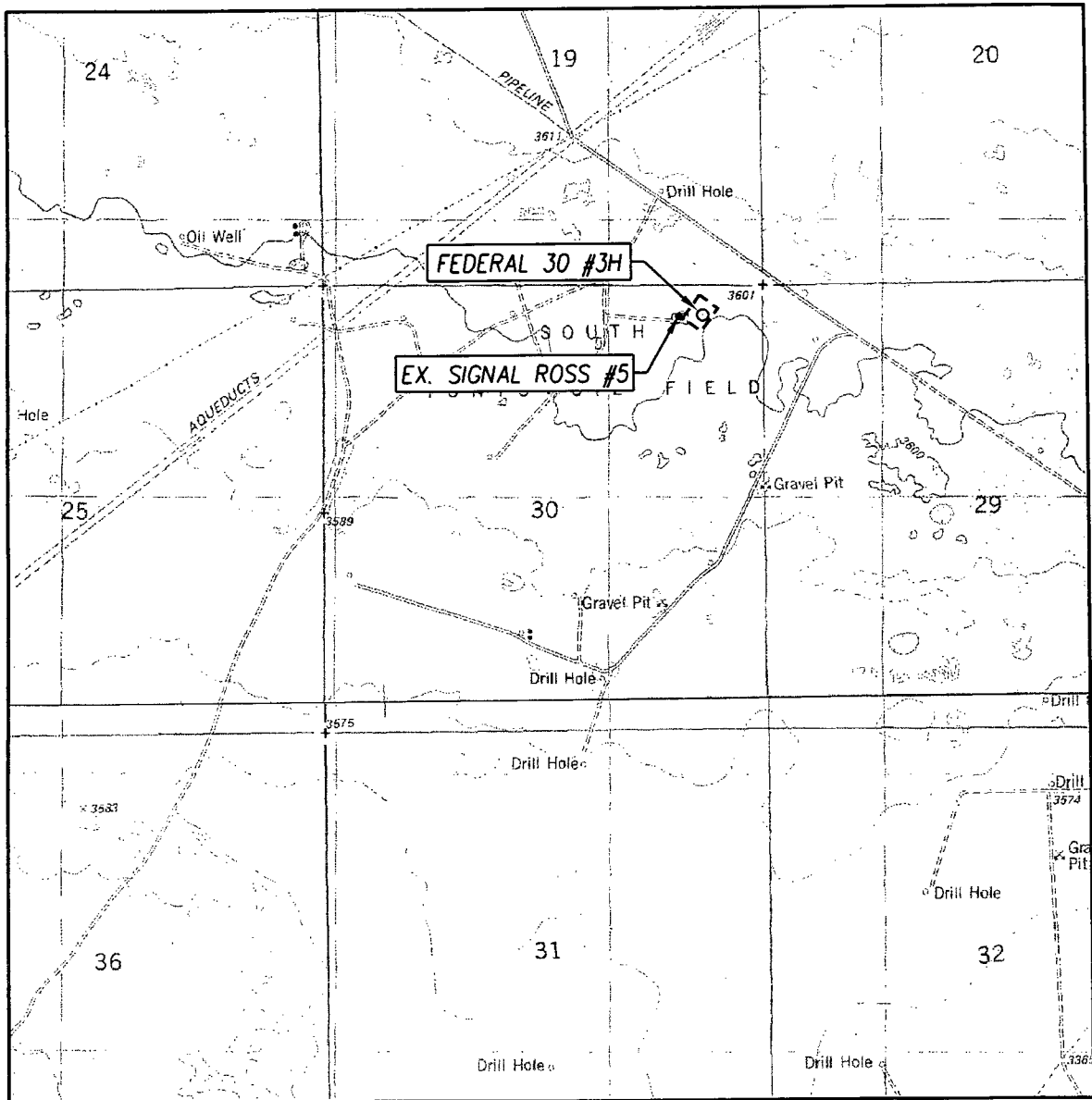
NORTH



LEASE _____ FEDERAL 30



LOCATION VERIFICATION MAP



SCALE: 1" = 2000'

CONTOUR INTERVAL:
LAGUNA GATUNA NW, N.M. - 10'

SEC. 30 TWP. 19-S RGE. 33-E

SURVEY _____ N.M.P.M.

COUNTY LEA STATE NEW MEXICO

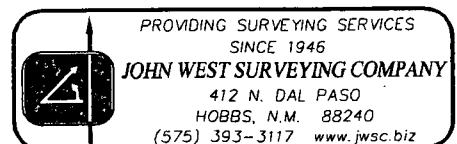
DESCRIPTION 330' FNL & 710' FEL

ELEVATION 3600'

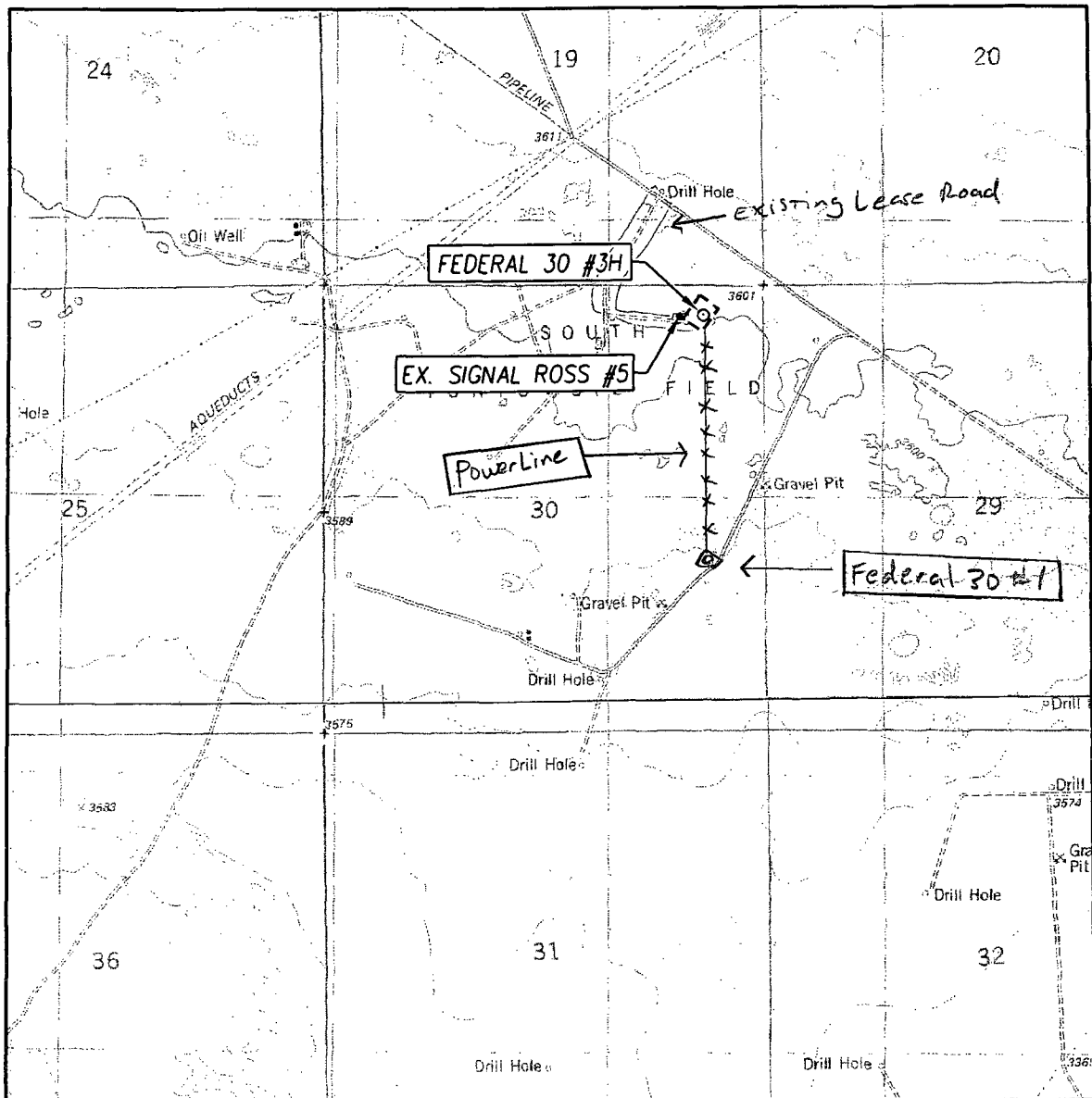
OPERATOR NADEL AND GUSSMAN HEYCO, LLC

LEASE FEDERAL 30

U.S.G.S. TOPOGRAPHIC MAP
LAGUNA GATUNA NW, N.M.



LOCATION VERIFICATION MAP



SCALE: 1" = 2000'

CONTOUR INTERVAL:
LAGUNA GATUNA NW, N.M. - 10'

SEC. 30 TWP. 19-S RGE. 33-E

SURVEY N.M.P.M.

COUNTY LEA STATE NEW MEXICO

DESCRIPTION 330' FNL & 710' FEL

ELEVATION 3600'

OPERATOR NADEL AND GUSSMAN HEYCO, LLC

LEASE FEDERAL 30

U.S.G.S. TOPOGRAPHIC MAP

LAGUNA GATUNA NW, N.M.

