

DISTRICT I
1625 N. French Dr., Hobbs, NM 88240
Phone: (505) 393-6161 Fax: (505) 393-0720
DISTRICT II
811 S. First St., Artesia, NM 88210
Phone: (505) 334-6178 Fax: (505) 748-9720
DISTRICT III
1000 Rio Brazos Road, Aztec, NM 87410
Phone: (505) 334-6178 Fax: (505) 334-6170
DISTRICT IV
1220 S. St. Francis Dr., Santa Fe, NM 87505
Phone: (505) 476-3460 Fax: (505) 476-3462

HOBBS OCD

MAY 12 2014

RECEIVED

State of New Mexico
Energy, Minerals & Natural Resources Department
OIL CONSERVATION DIVISION
1220 South St. Francis Dr.
Santa Fe, New Mexico 87505

Form C-102
Revised August 1, 2011
Submit one copy to appropriate
District Office

AMENDED REPORT

WELL LOCATION AND ACREAGE DEDICATION PLAT

API Number 30-025-40888	Pool Code 44500	Pool Name Maljamar; Yeso, West
Property Code 39256	Property Name PAN HEAD FEE	Well Number 4H
OGRID No. 229137	Operator Name COG OPERATING, LLC	Elevation 4163

Surface Location

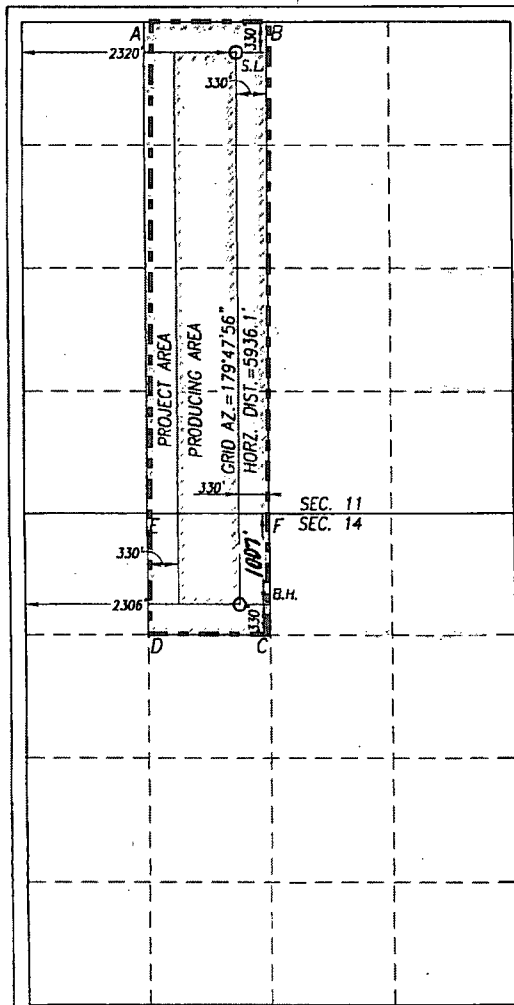
UL or lot No.	Section	Township	Range	Lot Idn	Feet from the	North/South line	Feet from the	East/West line	County
C	11	17-S	32-E		330	NORTH	2320	WEST	LEA

Bottom Hole Location If Different From Surface

UL or lot No.	Section	Township	Range	Lot Idn	Feet from the	North/South line	Feet from the	East/West line	County
C	14	17-S	32-E		1007	NORTH	2306	WEST	LEA

Dedicated Acres 200	Joint or Infill	Consolidation Code	Order No.
------------------------	-----------------	--------------------	-----------

NO ALLOWABLE WILL BE ASSIGNED TO THIS COMPLETION UNTIL ALL INTERESTS HAVE BEEN CONSOLIDATED OR A NON-STANDARD UNIT HAS BEEN APPROVED BY THE DIVISION



GEODETIC COORDINATES
NAD 27 NME

SURFACE LOCATION
Y=675386.6 N
X=682929.8 E

LAT.=32.855303° N
LONG.=103.737636° W

BOTTOM HOLE LOCATION
Y=669452.1 N
X=682950.5 E

CORNER COORDINATES TABLE

A - Y=675712.2 N, X=681927.0 E
B - Y=675717.9 N, X=683245.7 E
C - Y=669123.4 N, X=683282.9 E
D - Y=669118.6 N, X=681964.8 E
E - Y=670432.4 N, X=681956.0 E
F - Y=670431.5 N, X=683273.3 E

OPERATOR CERTIFICATION

I hereby certify that the information herein is true and complete to the best of my knowledge and belief, and that this organization either owns a working interest or unleased mineral interest in the land including the proposed bottom hole location or has a right to drill this well at this location pursuant to a contract with an owner of such mineral or working interest, or to a voluntary pooling agreement or a compulsory pooling order heretofore entered by the division.

C. Jackson 4/30/14
Signature Date

Chasity Jackson
Printed Name
cjackson@concho.com
E-mail Address

SURVEYOR CERTIFICATION

I hereby certify that the well location shown on this plat was plotted from field notes of actual surveys made by me or under my supervision, and that the same is true and correct to the best of my belief.

OCTOBER 11, 2012

Date of Survey
Signature & Seal of Professional Surveyor:

Ronald J. Eidson
RONALD J. EIDSON
NEW MEXICO
3239
Certificate No. 12641
Gary G. Eidson
Ronald J. Eidson 3239
BKL REL W.O. 12/1/13 JWSC W.O. 13.13.0519

JUN 09 2014