

DISTRICT I
1625 N. FRENCH DR., HOBBS, NM 88240
Phone: (575) 393-6161 Fax: (575) 393-0720

DISTRICT II
811 S. FIRST ST., ARTESIA, NM 88210
Phone: (575) 748-1283 Fax: (575) 748-1220

DISTRICT III
1000 RIO BRAZOS RD., AZTEC, NM 87410
Phone: (505) 334-6178 Fax: (505) 334-6170

DISTRICT IV
1220 S. ST. FRANCIS DR., SANTA FE, NM 87505
Phone: (505) 476-3460 Fax: (505) 476-3462

State of New Mexico
Energy, Minerals & Natural Resources Department
CONSERVATION DIVISION
1220 SOUTH ST. FRANCIS DR.
Santa Fe, New Mexico 87505

Form C-102
Revised August 1, 2011
Submit one copy to appropriate
District Office

☐ AMENDED REPORT

LOCATION AND ACREAGE DEDICATION PLAT

| | | |
|------------------------------------|---|--------------------------------------|
| API Number 30-025- 41910 | Pool Code 49490 | Pool Name Paduca; Delaware, North |
| Property Code 313358 | Property Name CORVO FEDERAL | Well Number 2H |
| OGRID No. 217955 | Operator Name COG PRODUCTION, LLC | Elevation 3491.6 |

Surface Location

| UL or lot No. | Section | Township | Range | Lot Idn | Feet from the | North/South line | Feet from the | East/West line | County |
|---------------|---------|----------|-------|---------|---------------|------------------|---------------|----------------|--------|
| B | 32 | 24-S | 32-E | | 190 | NORTH | 2370 | EAST | LEA |

Bottom Hole Location If Different From Surface

| UL or lot No. | Section | Township | Range | Lot Idn | Feet from the | North/South line | Feet from the | East/West line | County |
|---------------|---------|----------|-------|---------|---------------|------------------|---------------|----------------|--------|
| B | 29 | 24-S | 32-E | | 330 | NORTH | 2180 | EAST | LEA |

| | | | |
|------------------------|-----------------|--------------------|-----------|
| Dedicated Acres 160 | Joint or Infill | Consolidation Code | Order No. |
|------------------------|-----------------|--------------------|-----------|

NO ALLOWABLE WILL BE ASSIGNED TO THIS COMPLETION UNTIL ALL INTERESTS HAVE BEEN CONSOLIDATED
OR A NON-STANDARD UNIT HAS BEEN APPROVED BY THE DIVISION

| | | |
|--|--|---|
| <p>NAD 27 <u>PROPOSED BOTTOM HOLE LOCATION</u> Y=435126.0 N X=697541.9 E LAT.=32.194666° N LONG.=103.694743° W</p> <p>NAD 27 <u>SURFACE LOCATION</u> Y=429982.2 N X=697389.9 E LAT.=32.180529° N LONG.=103.695333° W</p> | | <p>OPERATOR CERTIFICATION</p> <p>I hereby certify that the information herein is true and complete to the best of my knowledge and belief, and that this organization either owns a working interest or unleased mineral interest in the land including the proposed bottom hole location or has a right to drill this well at this location pursuant to a contract with an owner of such mineral or working interest, or to a voluntary pooling agreement or a compulsory pooling order heretofore entered by the division.</p> <p><i>Melanie J Parker</i> 3/26/14 Signature Date Printed Name mparker@concho.com E-mail Address</p> <p>SURVEYOR CERTIFICATION</p> <p>I hereby certify that the well location shown on this plat was plotted from field notes of actual surveys made by me or under my supervision, and that the same is true and correct to the best of my belief.</p> <p>JANUARY 31, 2014 Date of Survey</p> <p>Signature & Seal of Professional Surveyor</p> <p></p> <p>Certificate No. CHAD HARCROW 17777 W.O. # 13-921 DRAWN BY: SP</p> |
|--|--|---|

JUN 17 2014

NEW MEXICO



FILE: 13-921

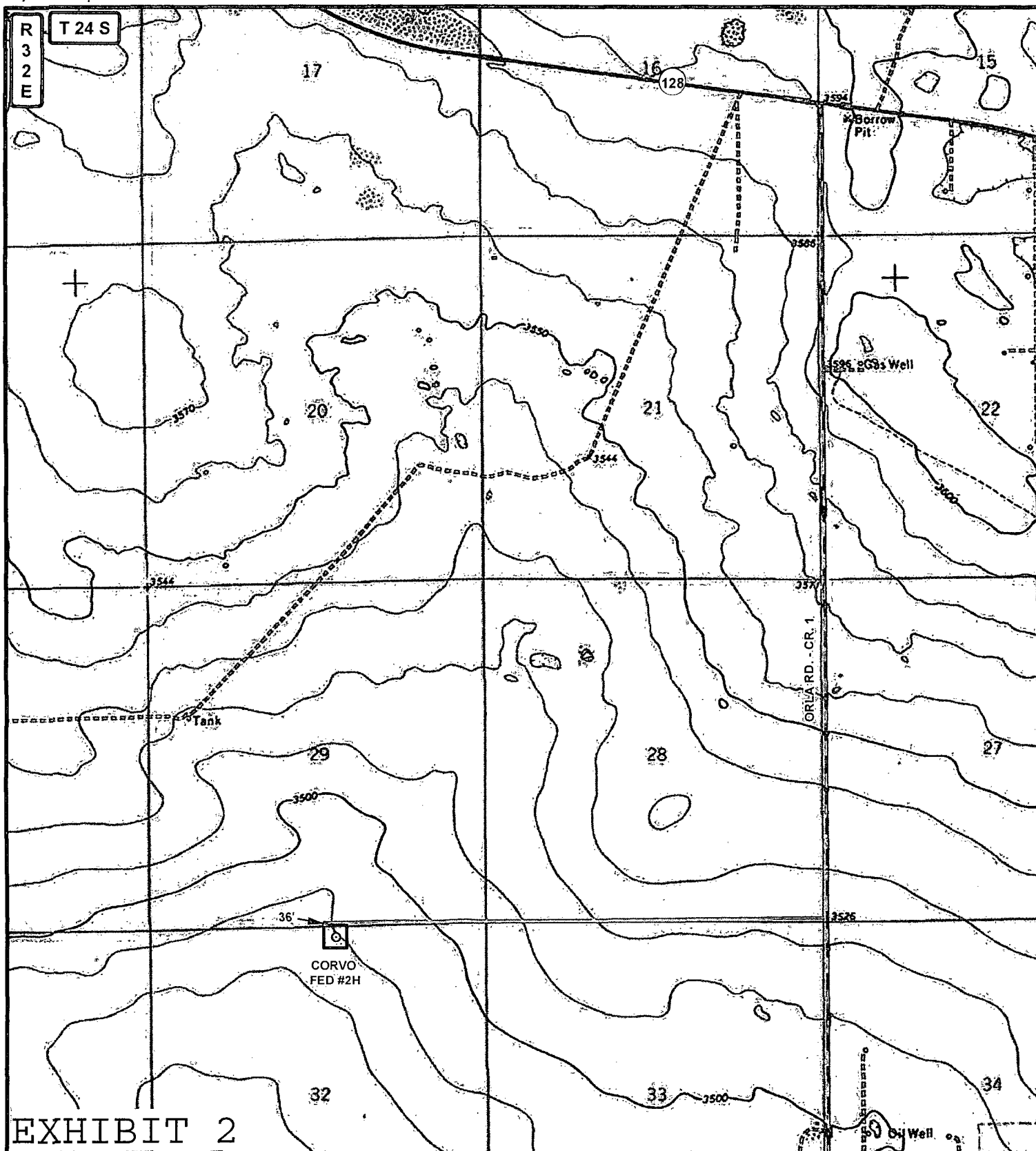


EXHIBIT 2

LEGEND

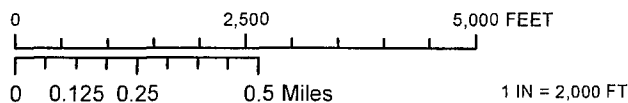
- WELL
- WELLPAD
- EXISTING ROAD
- PROPOSED ROAD

WELL NAME: CORVO FED #2H

SEC: 32 TWP: 24 S. RGE: 32 E. ELEVATION: 3491.6'

STATE: NEW MEXICO COUNTY: LEA 190' FNL & 2370' FEL

W.O. # 13-921 LEASE: CORVO FED SURVEY: N.M.P.M



LOCATION MAP IMAGERY 02/04/2014 S.P.



COG PRODUCTION, LLC

HARCROW SURVEYING, LLC
1107 WATSON, ARTESIA N.M. 88210
PH: (575) 513-2570 FAX: (575) 746-2158
chad_harcrow77@yahoo.com



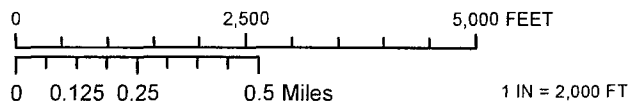


LEGEND

- WELL
- WELLPAD
- EXISTING ROAD
- PROPOSED ROAD

WELL NAME: CORVO FED #2H

SEC: 32 TWP: 24 S. RGE: 32 E. ELEVATION: 3491.6'
 STATE: NEW MEXICO COUNTY: LEA 190' FNL & 2370' FEL
 W.O. # 13-921 LEASE: CORVO FED SURVEY: N.M.P.M



LOCATION MAP IMAGERY 02/04/2014 SP.

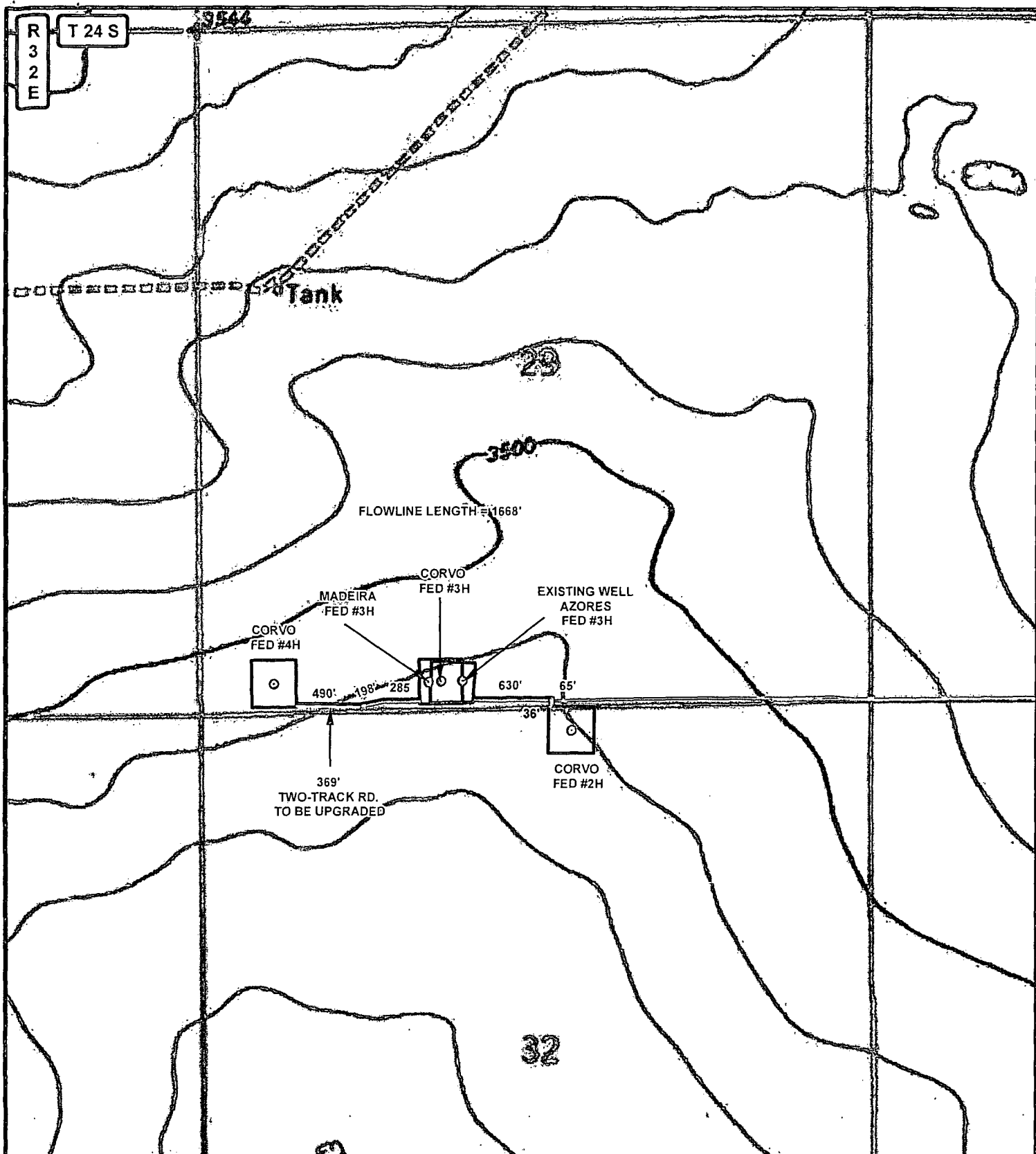


CONCHO

COG PRODUCTION, LLC

HARCROW SURVEYING, LLC
 1107 WATSON, ARTESIA N.M. 88210
 PH: (575) 513-2570 FAX: (575) 746-2158
 chad_harcrow77@yahoo.com





LEGEND

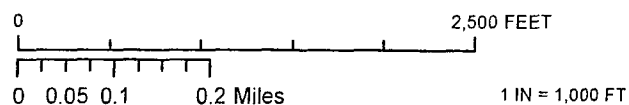
- WELL
- WELLPAD
- EXISTING ROAD
- PROPOSED ROAD
- TWO-TRACK ROAD
- FLOWLINE

CORVO FED #2H, 3H, 4H FLOWLINE

SEC: 29 TWP: 24 S. RGE: 32 E. LENGTH: 1668'

STATE: NEW MEXICO COUNTY: LEA

W.O. # 14-250 LEASE: CORVO FED SURVEY: N.M.P.M



FLOWLINE MAP TOPO 03/26/2014 S.P.



COG PRODUCTION, LLC

HARCROW SURVEYING, LLC
1107 WATSON, ARTESIA N.M. 88210
PH: (575) 313-2570 FAX: (575) 746-2156
chad_harcrow77@yahoo.com



R
3
2
E

T 24 S

20

21

30

29

28

FLOWLINE LENGTH=1668'

MADEIRA
FED #3H

CORVO
FED #3H

EXISTING WELL
AZORES
FED #3H

CORVO
FED #4H

490' 498' 285'

630' 65'

369'
TWO-TRACK RD.
TO BE UPGRADED

CORVO
FED #2H

32

33

31

LEGEND

○ WELL

□ WELLPAD

— EXISTING ROAD

— PROPOSED ROAD

--- TWO-TRACK ROAD

— FLOWLINE

CORVO FED #2H,3H,4H FLOWLINE

SEC: 29 TWP: 24 S. RGE: 32 E. LENGTH: 1668'

STATE: NEW MEXICO COUNTY: LEA

W.O. # 14-250 LEASE: CORVO FED SURVEY: N.M.P.M

0 2,500 FEET

0 0.05 0.1 0.2 Miles

1 IN = 1,000 FT

FLOWLINE MAP

MAGERY

03/26/2014

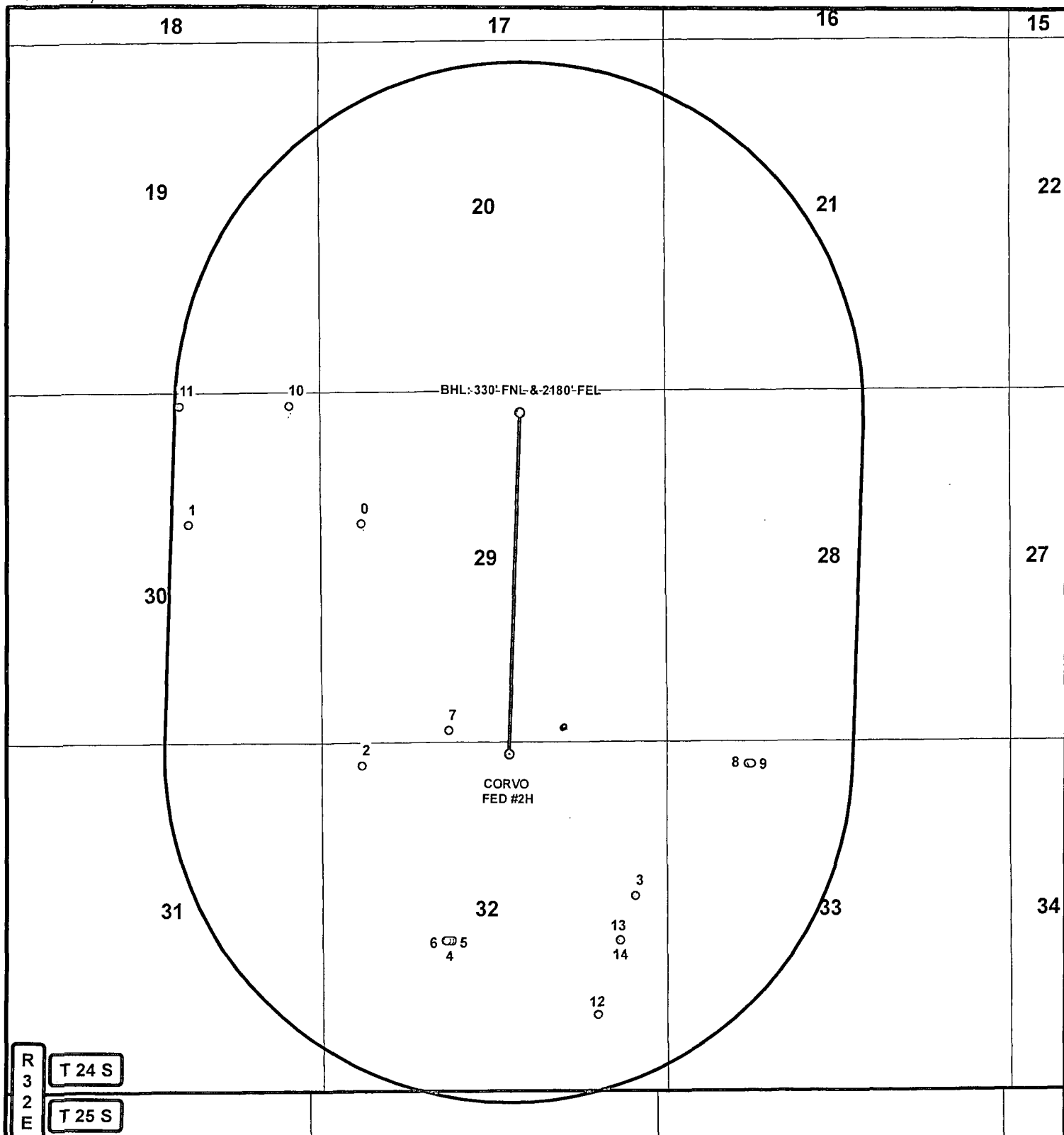
S.P.



COG PRODUCTION, LLC

HARCROW SURVEYING, LLC
1107 WATSON, ARTESIA N.M. 88210
PH (575) 313-2570 FAX (575) 746-2158
chad_harcrow77@yahoo.com





DATA FOR "WELLS WITHIN 1 MI." IS TAKEN FROM THE NEW MEXICO EMNRD WEBSITE. THE DATA HAS BEEN UPDATED THROUGH DECEMBER 2013.

LEGEND

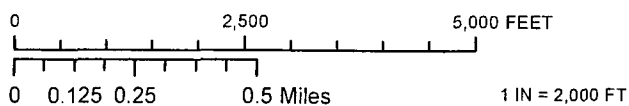
- WELL
- BOTTOMHOLE
- WELLS WITHIN 1 MI.
- 1 MI. BUFFER

WELL NAME: CORVO FED #2H

SEC: 32 TWP: 24 S. RGE: 32 E. ELEVATION: 3491.6'

STATE: NEW MEXICO COUNTY: LEA 190' FNL & 2370' FEL

W.O. # 13-921 LEASE: CORVO FED SURVEY: N.M.P.M



1 MILE MAP

02/05/2014

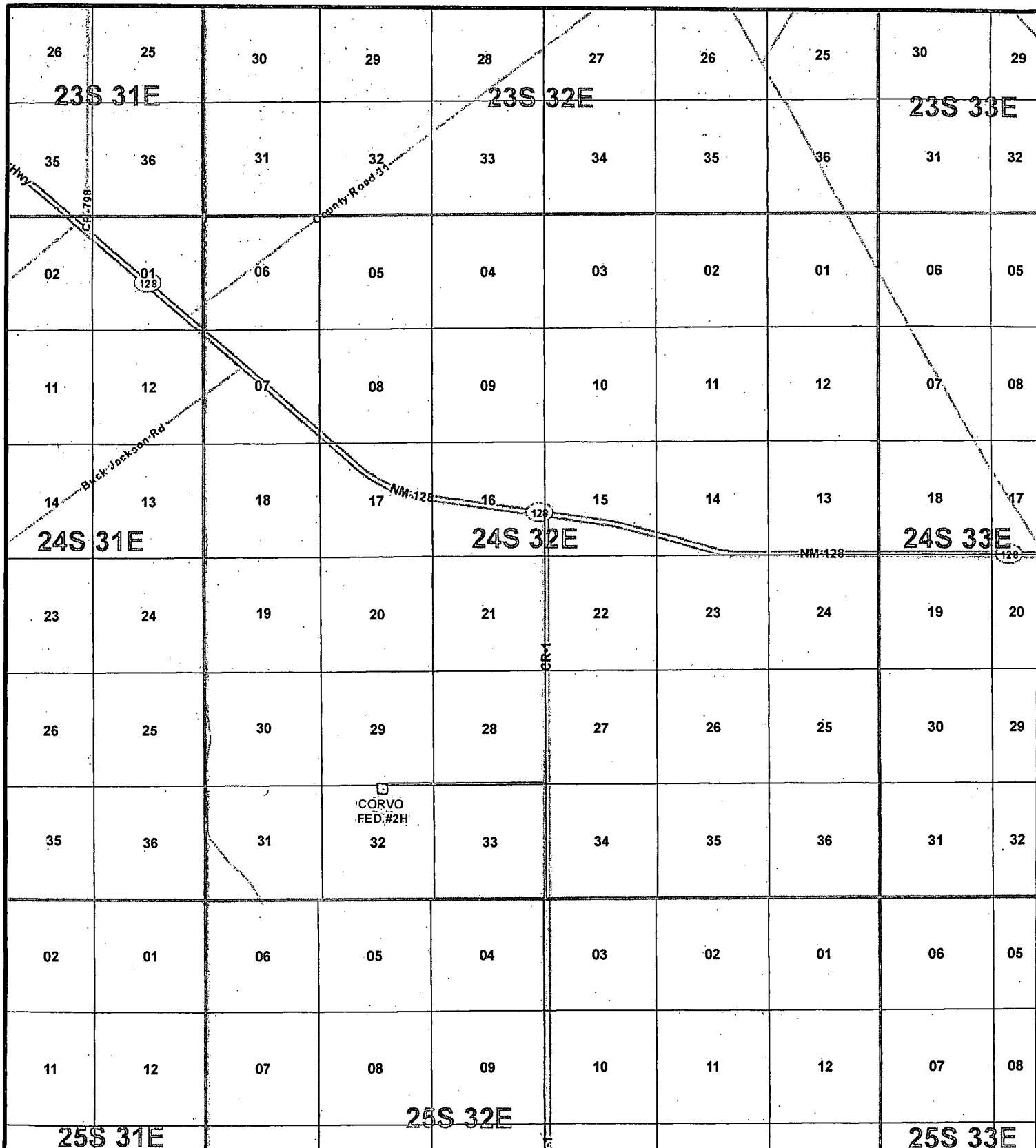
S.P.



COG PRODUCTION, LLC

HARCROW SURVEYING, LLC
1107 WATSON, ARTESIA N.M. 88210
PH: (575) 513-2370 FAX: (575) 746-2158
chad_harcrow77@yahoo.com





LEGEND

○ WELL

□ WELLPAD

— EXISTING ROAD

— PROPOSED ROAD

WELL NAME: CORVO FED #2H

SEC: 32 TWP: 24 S. RGE: 32 E. ELEVATION: 3491.6'

STATE: NEW MEXICO COUNTY: LEA 190' FNL & 2370' FEL

W.O. # 13-921 LEASE: CORVO FED SURVEY: N.M.P.M

0 2,500 5,000 7,500 10,000 12,500 15,000 FEET

0 0.4 0.8 1.6 Miles

1 IN = 6,000 FT

VICINITY MAP

02/04/2014

S.P.

CONCHO

COG PRODUCTION, LLC

HARCROW SURVEYING, LLC
1107 WATSON, ARTESIA N.M. 88210
PH: (575) 513-2570 FAX: (575) 746-2158
chad_harcrow77@yahoo.com

