

District I  
1625 N. Hobbs Dr., Hobbs, NM 88240  
Phone: (575) 393-6161 Fax: (575) 393-9720  
District II  
311 S. First St., Artesia, NM 88210  
Phone: (505) 748-1283 Fax: (575) 748-9720  
District III  
1000 Rio Brazos Road, Aztec, NM 87410  
Phone: (505) 334-6178 Fax: (505) 334-6170  
District IV  
1220 S. St. Francis Dr., Santa Fe, NM 87505  
Phone: (505) 476-3460 Fax: (505) 476-3462

State of New Mexico  
Energy, Minerals & Natural Resources Department  
OIL CONSERVATION DIVISION  
1220 South St. Francis Dr.  
Santa Fe, NM 87505

Form C-102  
Revised August 1, 2011  
Submit one copy to appropriate  
District Office

RECEIVED

☐ AMENDED REPORT

WELL LOCATION AND ACREAGE DEDICATION PLAT

<sup>1</sup> API Number <b>70-025-41913</b>	<sup>2</sup> Pool Code <b>14865</b>	<sup>3</sup> Pool Name <b>CRUZ</b> Bone Spring
<sup>4</sup> Property Code <b>313357</b>	<sup>5</sup> Property Name <b>HORNED VIPER 20 FED COM</b>	
<sup>6</sup> Well Number <b>1H</b>	<sup>7</sup> Elevation <b>3707.0</b>	
<sup>8</sup> OGRID No. <b>6137</b>	<sup>9</sup> Operator Name <b>DEVON ENERGY PRODUCTION COMPANY, L.P.</b>	

<sup>10</sup> Surface Location

UL or lot no.	Section	Township	Range	Lot Idn	Feet from the	North/South line	Feet from the	East/West line	County
N	20	23 S	33 E		200	SOUTH	1350	WEST	LEA

<sup>11</sup> Bottom Hole Location If Different From Surface

UL or lot no.	Section	Township	Range	Lot Idn	Feet from the	North/South line	Feet from the	East/West line	County
C	20	23 S	33 E		330	NORTH	1980	WEST	LEA

<sup>12</sup> Dedicated Acres	<sup>13</sup> Joint or Infill	<sup>14</sup> Consolidation Code	<sup>15</sup> Order No.
160			

No allowable will be assigned to this completion until all interests have been consolidated or a non-standard unit has been approved by the division.

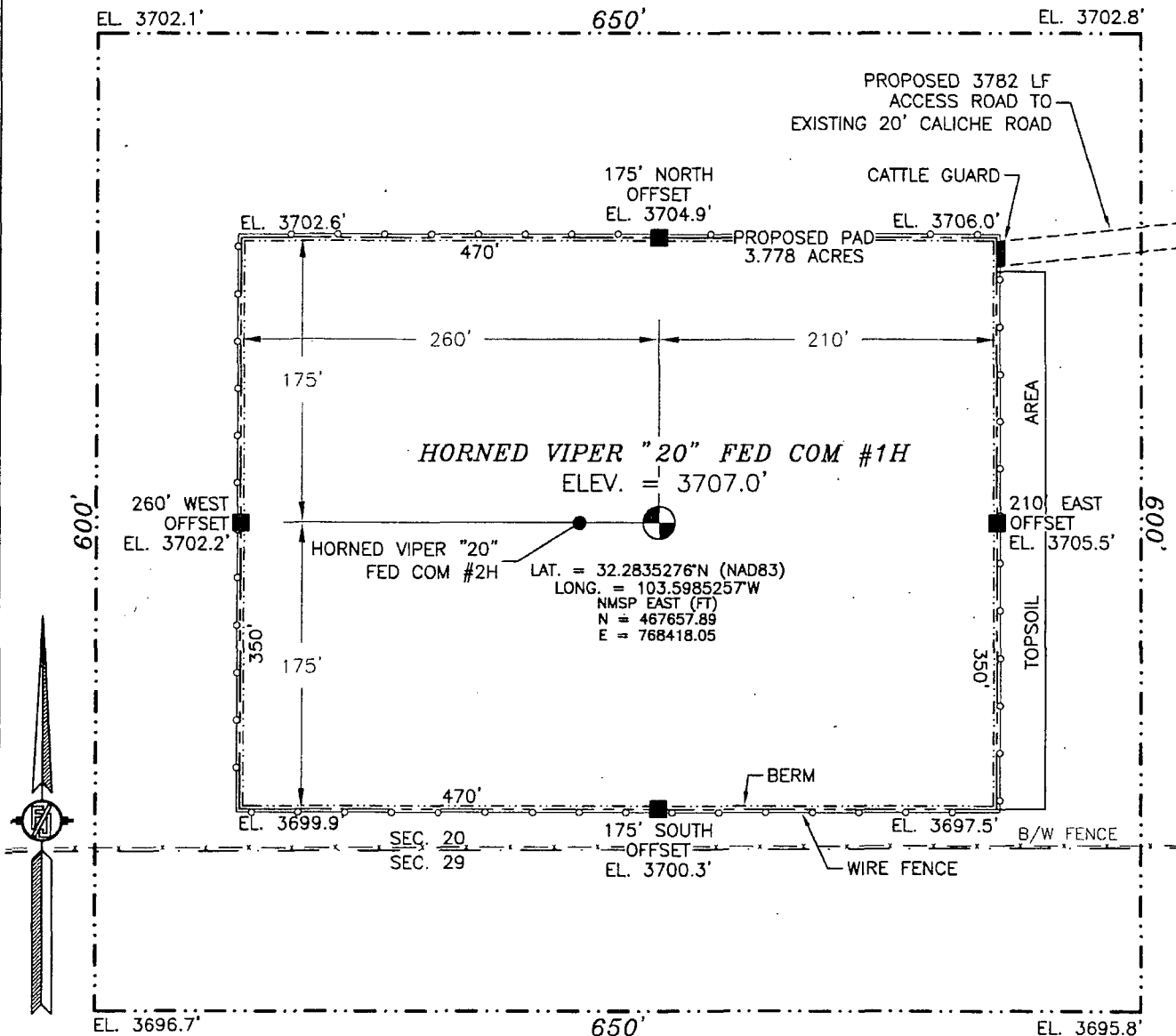
<p>N89°43'04"E 2637.90 FT</p> <p>N89°46'10"E 2642.55 FT</p> <p>NW CORNER SEC. 20 LAT. = 32.2975067°N LONG. = 103.6029014°W NMSP EAST (FT) N = 472734.22 E = 767031.14</p> <p>W Q CORNER SEC. 20 LAT. = 32.2902467°N LONG. = 103.6028970°W NMSP EAST (FT) N = 470093.05 E = 767050.51</p> <p>SW CORNER SEC. 20 LAT. = 32.2829883°N LONG. = 103.6028929°W NMSP EAST (FT) N = 467452.47 E = 767069.77</p> <p>1350'</p>		<p>N Q CORNER SEC. 20 LAT. = 32.2974928°N LONG. = 103.5943663°W NMSP EAST (FT) N = 472747.23 E = 769668.47</p> <p>NE CORNER SEC. 20 LAT. = 32.2974724°N LONG. = 103.5858160°W NMSP EAST (FT) N = 472758.13 E = 772310.54</p> <p>E Q CORNER SEC. 20 LAT. = 32.2902115°N LONG. = 103.5858143°W NMSP EAST (FT) N = 470116.64 E = 772329.48</p> <p>SE CORNER SEC. 20 LAT. = 32.2829532°N LONG. = 103.5858118°W NMSP EAST (FT) N = 467476.09 E = 772348.65</p>		<p><sup>17</sup> OPERATOR CERTIFICATION</p> <p>I hereby certify that the information contained herein is true and complete to the best of my knowledge and belief, and that this organization either owns a working interest or released mineral interest in the land including the proposed bottom hole location or has a right to drill this well at this location pursuant to a contract with an owner of such a mineral or working interest, or to a voluntary pooling agreement or a compulsory pooling order heretofore entered by the division.</p> <p><i>[Signature]</i> 1/7/2014 Signature Date David Cook, Regulatory Specialist Printed Name david.cook@dmv.com E-mail Address</p> <p><sup>18</sup> SURVEYOR CERTIFICATION</p> <p>I hereby certify that the well location shown on this plat was plotted from field notes of actual surveys made by me or under my supervision, and that the same is true and correct to the best of my belief.</p> <p>DECEMBER 16, 2013 Date of Survey <i>[Signature]</i> Signature and Seal of Professional Surveyor Certificate Number: FLEMING AND RAYMOND, PLS 12797 SURVEY NO. 2136B</p>
---------------------------------------------------------------------------------------------------------------------------------------------------------------------------------------------------------------------------------------------------------------------------------------------------------------------------------------------------------------------------------------------------------------------------------------------------------------------------------	--	-------------------------------------------------------------------------------------------------------------------------------------------------------------------------------------------------------------------------------------------------------------------------------------------------------------------------------------------------------------------------------------------------------------------------------------------------------------------------------------------------------------------------------------------	--	-----------------------------------------------------------------------------------------------------------------------------------------------------------------------------------------------------------------------------------------------------------------------------------------------------------------------------------------------------------------------------------------------------------------------------------------------------------------------------------------------------------------------------------------------------------------------------------------------------------------------------------------------------------------------------------------------------------------------------------------------------------------------------------------------------------------------------------------------------------------------------------------------------------------------------------------------------------------------------------------------------------------------------------------------------------------------------------------------------------------------------------------------------------------------------------

PP: 200 FSL i 1350 FWL

JUN 17 2014

SECTION 20, TOWNSHIP 23 SOUTH, RANGE 33 EAST, N.M.P.M.  
LEA COUNTY, STATE OF NEW MEXICO  
**SITE MAP**

NOTE: LATITUDE AND LONGITUDE COORDINATES ARE SHOWN USING THE NORTH AMERICAN DATUM OF 1983 (NAD83). LISTED NEW MEXICO STATE PLANE EAST COORDINATES ARE GRID (NAD83). BASIS OF BEARING AND DISTANCES USED ARE NEW MEXICO STATE PLANE EAST COORDINATES MODIFIED TO THE SURFACE



010 50 100 200  
SCALE 1" = 100'

**DIRECTIONS TO LOCATION**

FROM STATE HIGHWAY 128 AND CR 21 (DELAWARE BASIN) GO NORTH ON CR 21 6.1 MILES. TURN LEFT ON CALICHE ROAD AND GO WEST 4.4 MILES. TURN LEFT ON CALICHE ROAD AND GO SOUTH 0.9 MILES. TURN RIGHT ON 2-TRACK ROAD AND GO WEST 564' AND FOLLOW PROPOSED ROAD SURVEY FLAGS WEST 3218' TO THE NORTHEAST CORNER OF PROPOSED PAD FOR THIS LOCATION.

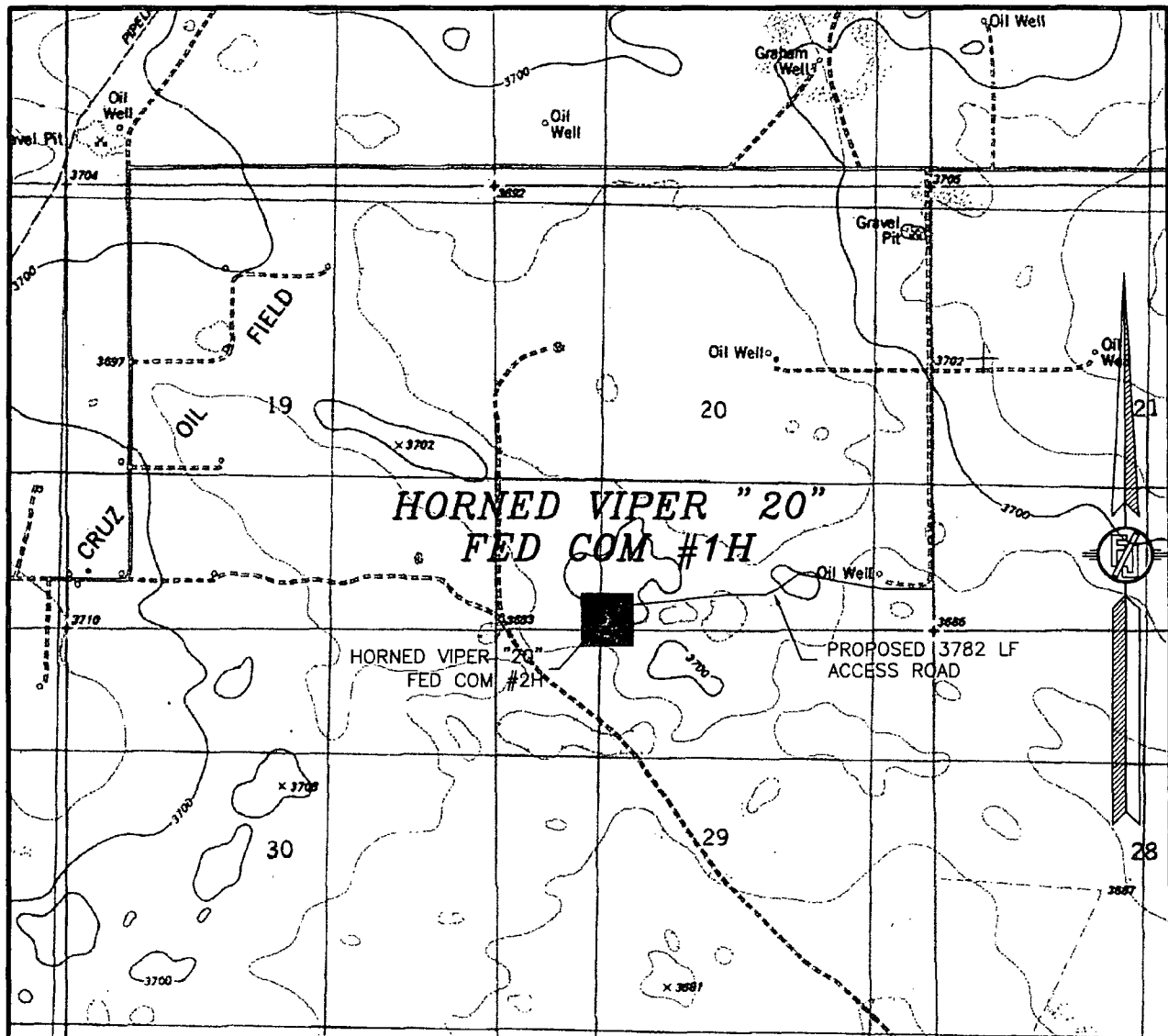
DEVON ENERGY PRODUCTION COMPANY, L.P.  
**HORNED VIPER "20" FED COM #1H**  
LOCATED 200. FT. FROM THE SOUTH LINE  
AND 1350 FT. FROM THE WEST LINE OF  
SECTION 20, TOWNSHIP 23 SOUTH,  
RANGE 33 EAST, N.M.P.M.  
LEA COUNTY, STATE OF NEW MEXICO

DECEMBER 16, 2013

SURVEY NO. 2136B

MADRON SURVEYING, INC. 301 SOUTH CANAL CARLSBAD, NEW MEXICO  
(575) 234-3341

SECTION 20, TOWNSHIP 23 SOUTH, RANGE 33 EAST, N.M.P.M.  
LEA COUNTY, STATE OF NEW MEXICO  
LOCATION VERIFICATION MAP



USGS QUAD MAP:  
TIP TOP WELLS

NOT TO SCALE

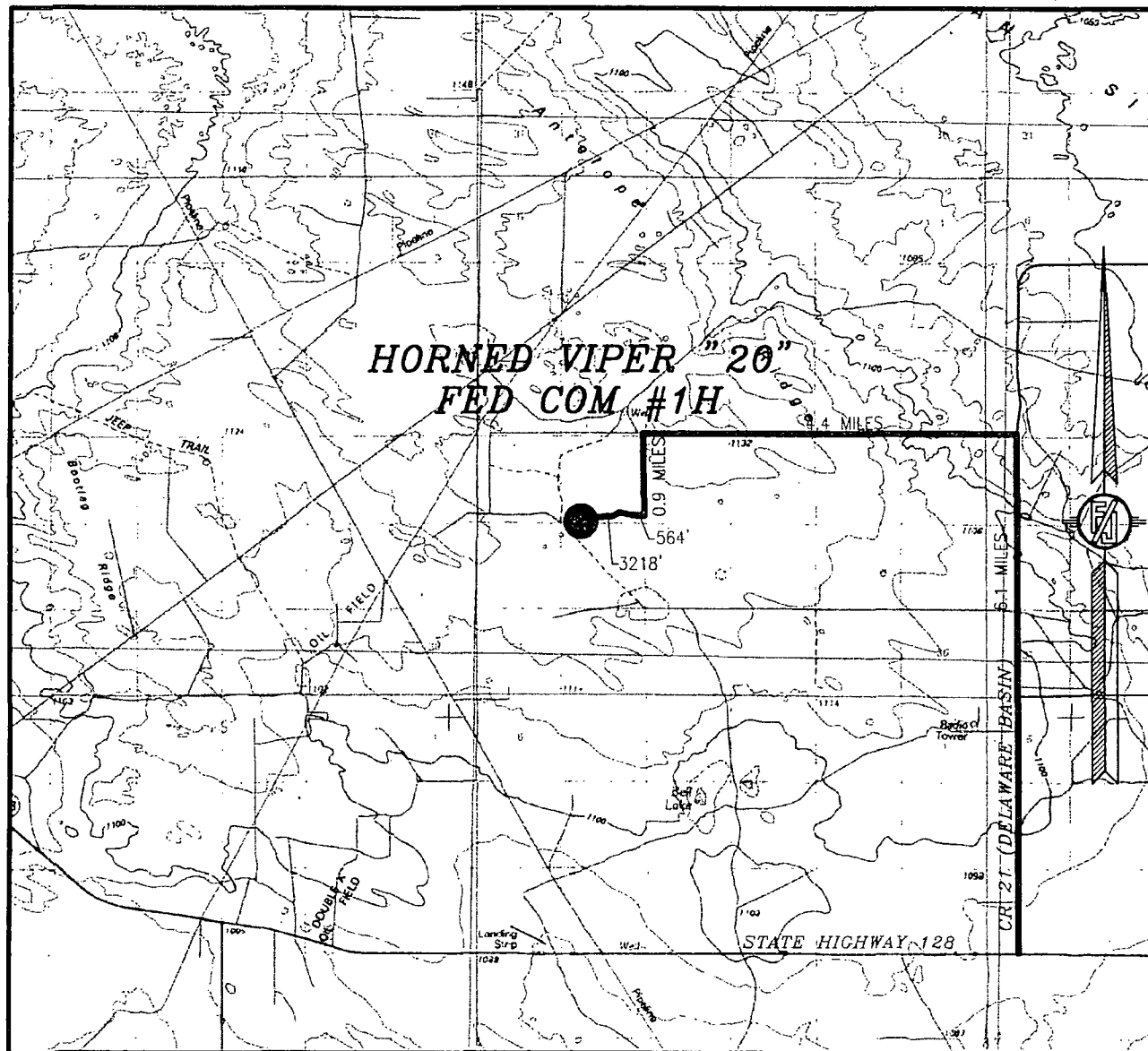
DEVON ENERGY PRODUCTION COMPANY, L.P.  
**HORNER VIPER "20" FED COM #1H**  
LOCATED 200 FT. FROM THE SOUTH LINE  
AND 1350 FT. FROM THE WEST LINE OF  
SECTION 20, TOWNSHIP 23 SOUTH,  
RANGE 33 EAST, N.M.P.M.  
LEA COUNTY, STATE OF NEW MEXICO

DECEMBER 16, 2013

SURVEY NO. 2136B

MADRON SURVEYING, INC. 301 SOUTH CANAL (575) 234-3341 CARLSBAD, NEW MEXICO

SECTION 20, TOWNSHIP 23 SOUTH, RANGE 33 EAST, N.M.P.M.  
LEA COUNTY, STATE OF NEW MEXICO  
VICINITY MAP



NOT TO SCALE

DEVON ENERGY PRODUCTION COMPANY, L.P.

**HORNED VIPER "20" FED COM #1H**

LOCATED 200 FT. FROM THE SOUTH LINE  
AND 1350 FT. FROM THE WEST LINE OF  
SECTION 20, TOWNSHIP 23 SOUTH,  
RANGE 33 EAST, N.M.P.M.  
LEA COUNTY, STATE OF NEW MEXICO

**DIRECTIONS TO LOCATION**

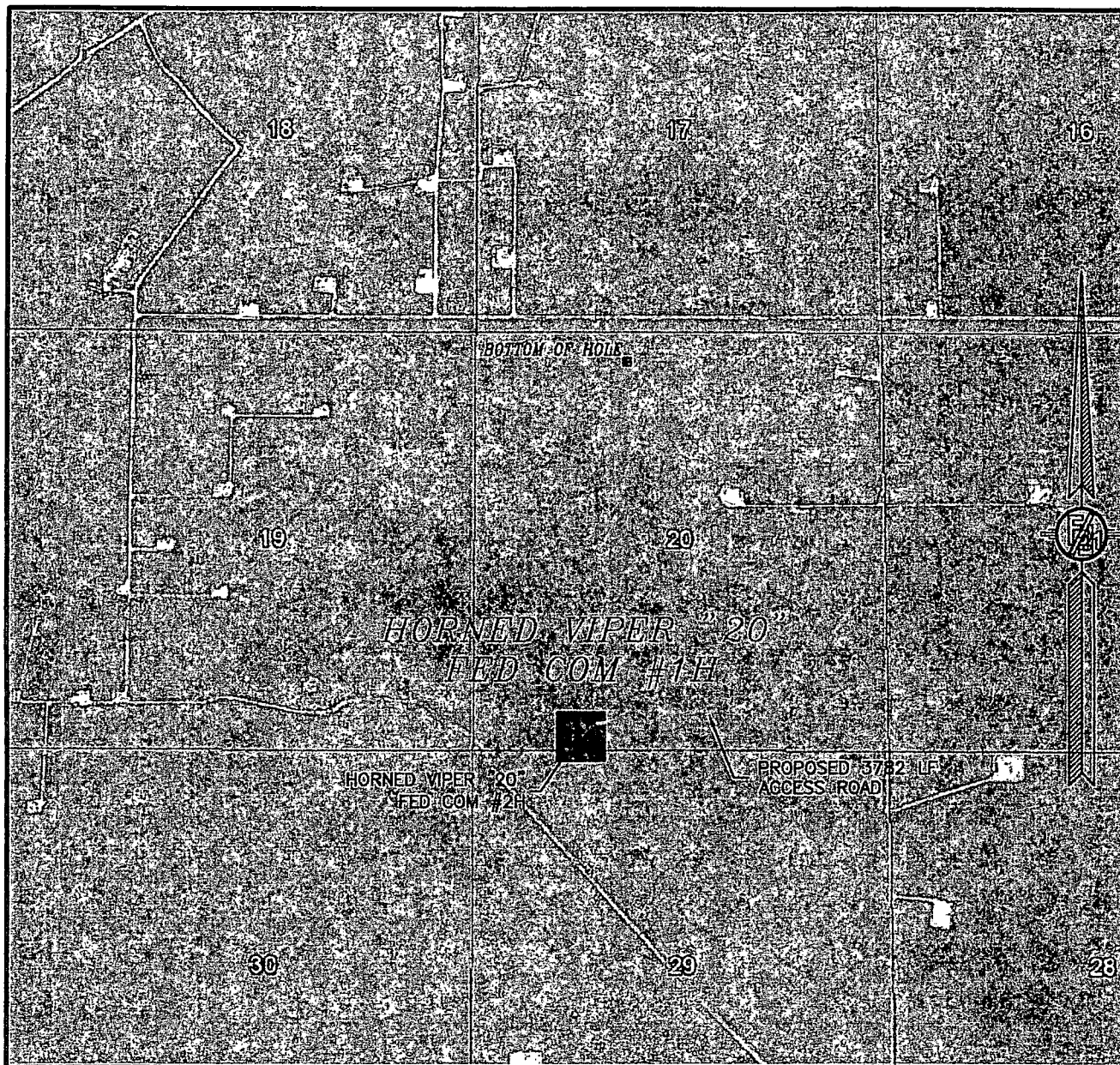
FROM STATE HIGHWAY 128 AND CR 21 (DELAWARE BASIN) GO NORTH  
ON CR 21 6.1 MILES, TURN LEFT ON CALICHE ROAD AND GO WEST  
4.4 MILES, TURN LEFT ON CALICHE ROAD AND GO SOUTH 0.9 MILES,  
TURN RIGHT ON 2-TRACK ROAD AND GO WEST 564' AND FOLLOW  
PROPOSED ROAD SURVEY FLAGS WEST 3218' TO THE NORTHEAST  
CORNER OF PROPOSED PAD FOR THIS LOCATION.

DECEMBER 16, 2013

MADRON SURVEYING, INC. 301 SOUTH CANAL  
(575) 234-3341

SURVEY NO. 2136B  
CARLSBAD, NEW MEXICO

SECTION 20, TOWNSHIP 23 SOUTH, RANGE 33 EAST, N.M.P.M.  
LEA COUNTY, STATE OF NEW MEXICO  
**AERIAL PHOTO**



NOT TO SCALE  
AERIAL PHOTO:  
GOOGLE EARTH  
MARCH 2012

DEVON ENERGY PRODUCTION COMPANY, L.P.  
**HORNE VIPER "20" FED COM #1H**  
LOCATED 200 FT. FROM THE SOUTH LINE  
AND 1350 FT. FROM THE WEST LINE OF  
SECTION 20, TOWNSHIP 23 SOUTH,  
RANGE 33 EAST, N.M.P.M.  
LEA COUNTY, STATE OF NEW MEXICO

DECEMBER 16, 2013

SURVEY NO. 2136B

MADRON SURVEYING, INC. 301 SOUTH CANAL CARLSBAD, NEW MEXICO  
(575) 234-3341

