

District I
1625 N. French Dr., Hobbs, NM 88240
Phone: (575) 393-6161 Fax: (575) 393-0720
District II
811 S. First St., Artesia, NM 88210
Phone: (575) 748-1283 Fax: (575) 748-1270
District III
1000 Rio Brazos Road, Aztec, NM 87410
Phone: (505) 334-6178 Fax: (505) 334-6170
District IV
1220 S. St. Francis Dr., Santa Fe, NM 87505
Phone: (505) 476-3460 Fax: (505) 476-3462

State of New Mexico
Energy, Minerals & Natural Resources Department
OIL CONSERVATION DIVISION
1220 South St. Francis Dr.
Santa Fe, NM 87505

Form C-102
Revised August 1, 2011
Submit one copy to appropriate
District Office
☐ AMENDED REPORT

WELL LOCATION AND ACREAGE DEDICATION PLAT

¹ API Number 30-025-41914		² Pool Code 14865	³ Pool Name CRUZ BONE SPRING
⁴ Property Code 313357	⁵ Property Name HORNED VIPER 20 FEDERAL		⁶ Well Number 2H
⁷ OGRID No. 6137	⁸ Operator Name DEVON ENERGY PRODUCTION COMPANY, L.P.		⁹ Elevation 3706.8

¹⁰ Surface Location

UL or lot no.	Section	Township	Range	Lot Idn	Feet from the	North/South line	Feet from the	East/West line	County
M	20	23 S	33 E		200	SOUTH	1300	WEST	LEA

¹¹ Bottom Hole Location If Different From Surface

UL or lot no.	Section	Township	Range	Lot Idn	Feet from the	North/South line	Feet from the	East/West line	County
D	20	23 S	33 E		330	NORTH	660	WEST	LEA

¹² Dedicated Acres 160	¹³ Joint or Infill	¹⁴ Consolidation Code	¹⁵ Order No.
---	-------------------------------	----------------------------------	-------------------------

No allowable will be assigned to this completion until all interests have been consolidated or a non-standard unit has been approved by the division.

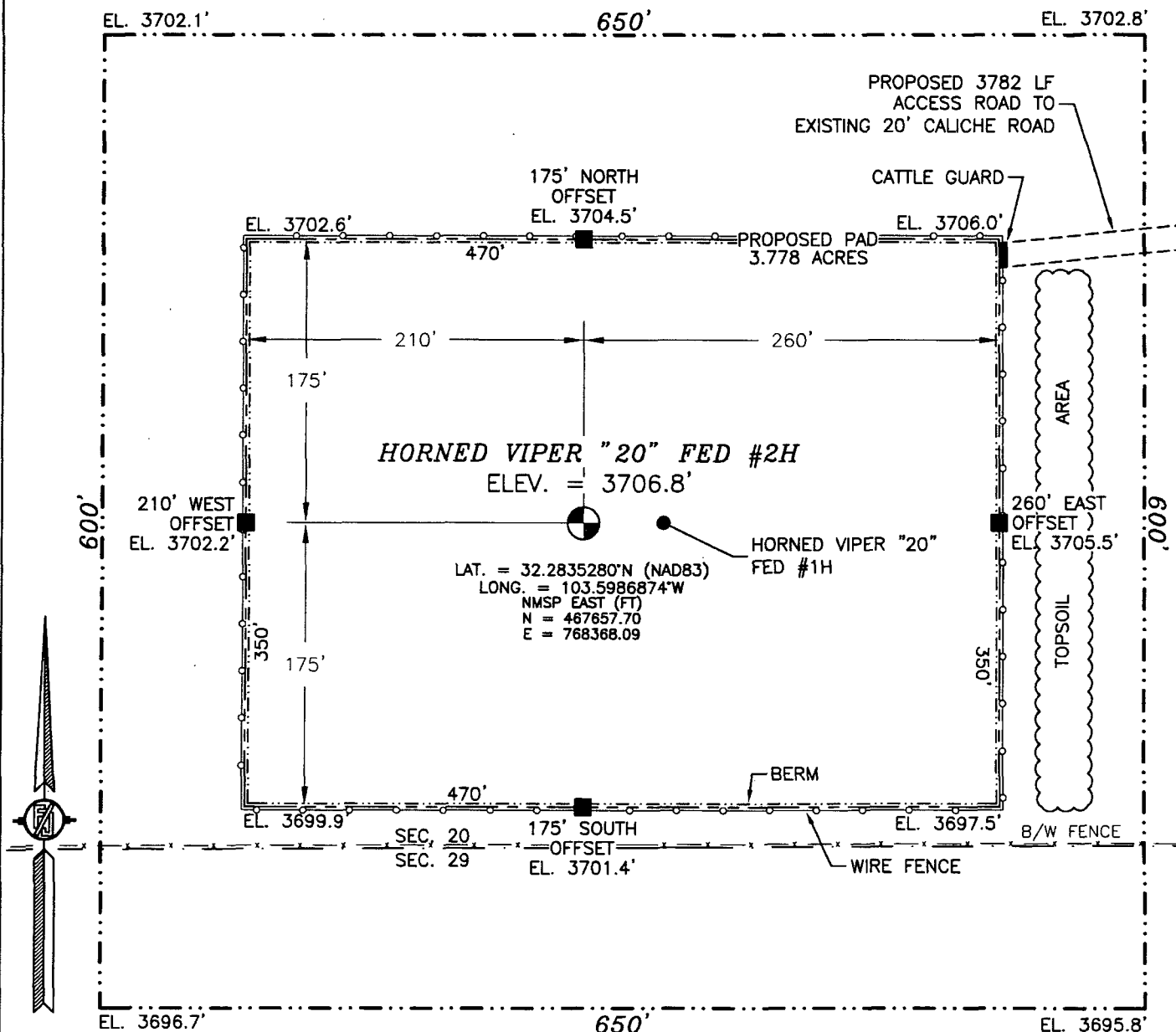
<p>N89°43'04"E 2637.90 FT</p> <p>NW CORNER SEC. 20 LAT. = 32.2975067°N LONG. = 103.6029014°W</p> <p>NMSP EAST (FT) N = 472734.22 E = 767031.14</p> <p>660'</p> <p>330'</p> <p>BOTTOM OF HOLE</p> <p>BOTTOM OF HOLE LAT. = 32.2965947°N LONG. = 103.6007751°W</p> <p>NMSP EAST (FT) N = 472406.30 E = 767690.44</p> <p>W Q CORNER SEC. 20 LAT. = 32.2902467°N LONG. = 103.6028970°W</p> <p>NMSP EAST (FT) N = 470093.05 E = 767050.51</p> <p>HORNED VIPER "20" FED #2H ELEV. = 3706.8' LAT. = 32.2835280°N (NAD83) LONG. = 103.5986874°W</p> <p>NMSP EAST (FT) N = 467657.70 E = 768368.09</p> <p>SURFACE LOCATION</p> <p>SW CORNER SEC. 20 LAT. = 32.2829883°N LONG. = 103.6028929°W</p> <p>NMSP EAST (FT) N = 467452.47 E = 767069.77</p> <p>1300'</p> <p>S89°46'09"W 2638.73 FT</p>		<p>N89°46'10"E 2642.55 FT</p> <p>N Q CORNER SEC. 20 LAT. = 32.2974928°N LONG. = 103.5943663°W</p> <p>NMSP EAST (FT) N = 472747.23 E = 769668.47</p> <p>NE CORNER SEC. 20 LAT. = 32.2974724°N LONG. = 103.5858160°W</p> <p>NMSP EAST (FT) N = 472758.13 E = 772310.54</p> <p>E Q CORNER SEC. 20 LAT. = 32.2902115°N LONG. = 103.5858143°W</p> <p>NMSP EAST (FT) N = 470116.64 E = 772329.48</p> <p>NOTE: LATITUDE AND LONGITUDE COORDINATES ARE SHOWN USING THE NORTH AMERICAN DATUM OF 1983 (NAD83). LISTED NEW MEXICO STATE PLANE EAST COORDINATES ARE GRID (NAD83). BASIS OF BEARING AND DISTANCES USED ARE NEW MEXICO STATE PLANE EAST COORDINATES MODIFIED TO THE SURFACE.</p> <p>S Q CORNER SEC. 20 LAT. = 32.2829673°N LONG. = 103.5943565°W</p> <p>NMSP EAST (FT) N = 467463.10 E = 769707.93</p> <p>SE CORNER SEC. 20 LAT. = 32.2829532°N LONG. = 103.5858118°W</p> <p>NMSP EAST (FT) N = 467476.09 E = 772348.65</p> <p>S89°43'06"W 2641.30 FT</p>	<p>17 OPERATOR CERTIFICATION I hereby certify that the information contained herein is true and complete to the best of my knowledge and belief, and that this organization either owns a working interest or unleased mineral interest in the land including the proposed bottom hole location or has a right to drill this well at this location pursuant to a contract with an owner of such a mineral or working interest, or to a voluntary pooling agreement or a compulsory pooling order heretofore entered by the division.</p> <p><i>[Signature]</i> 11/18/2013 Signature Date</p> <p>David H. Cook Regulatory Specialist Printed Name</p> <p>david.cook@dv.com E-mail Address</p> <p>18 SURVEYOR CERTIFICATION I hereby certify that the well location shown on this plat was plotted from field notes of actual surveys made by me or under my supervision, and that the same is true and correct to the best of my belief. NOVEMBER 5, 2013</p> <p>Date of Survey 12797</p> <p><i>[Signature]</i> Signature and Seal of Professional Surveyor</p> <p>Certificate Number: FILMON F. JARAMILLO, PLS 12797 SURVEY NO. 2137A</p>
---	--	---	---

PP: 200 FSL & 1300 FWL

JUN 17 2014

SECTION 20, TOWNSHIP 23 SOUTH, RANGE 33 EAST, N.M.P.M.
LEA COUNTY, STATE OF NEW MEXICO
SITE MAP

NOTE: LATITUDE AND LONGITUDE COORDINATES ARE SHOWN USING THE NORTH AMERICAN DATUM OF 1983 (NAD83). LISTED NEW MEXICO STATE PLANE EAST COORDINATES ARE GRID (NAD83). BASIS OF BEARING AND DISTANCES USED ARE NEW MEXICO STATE PLANE EAST COORDINATES MODIFIED TO THE SURFACE



0 10 50 100 200

SCALE 1" = 100'
DIRECTIONS TO LOCATION

FROM STATE HIGHWAY 128 AND CR 21 (DELAWARE BASIN) GO NORTH ON CR 21 6.1 MILES, TURN LEFT ON CALICHE ROAD AND GO WEST 4.4 MILES, TURN LEFT ON CALICHE ROAD AND GO SOUTH 0.9 MILES, TURN RIGHT ON 2-TRACK ROAD AND GO WEST 564' AND FOLLOW PROPOSED ROAD SURVEY FLAGS WEST 3218' TO THE NORTHEAST CORNER OF PROPOSED PAD FOR THIS LOCATION.

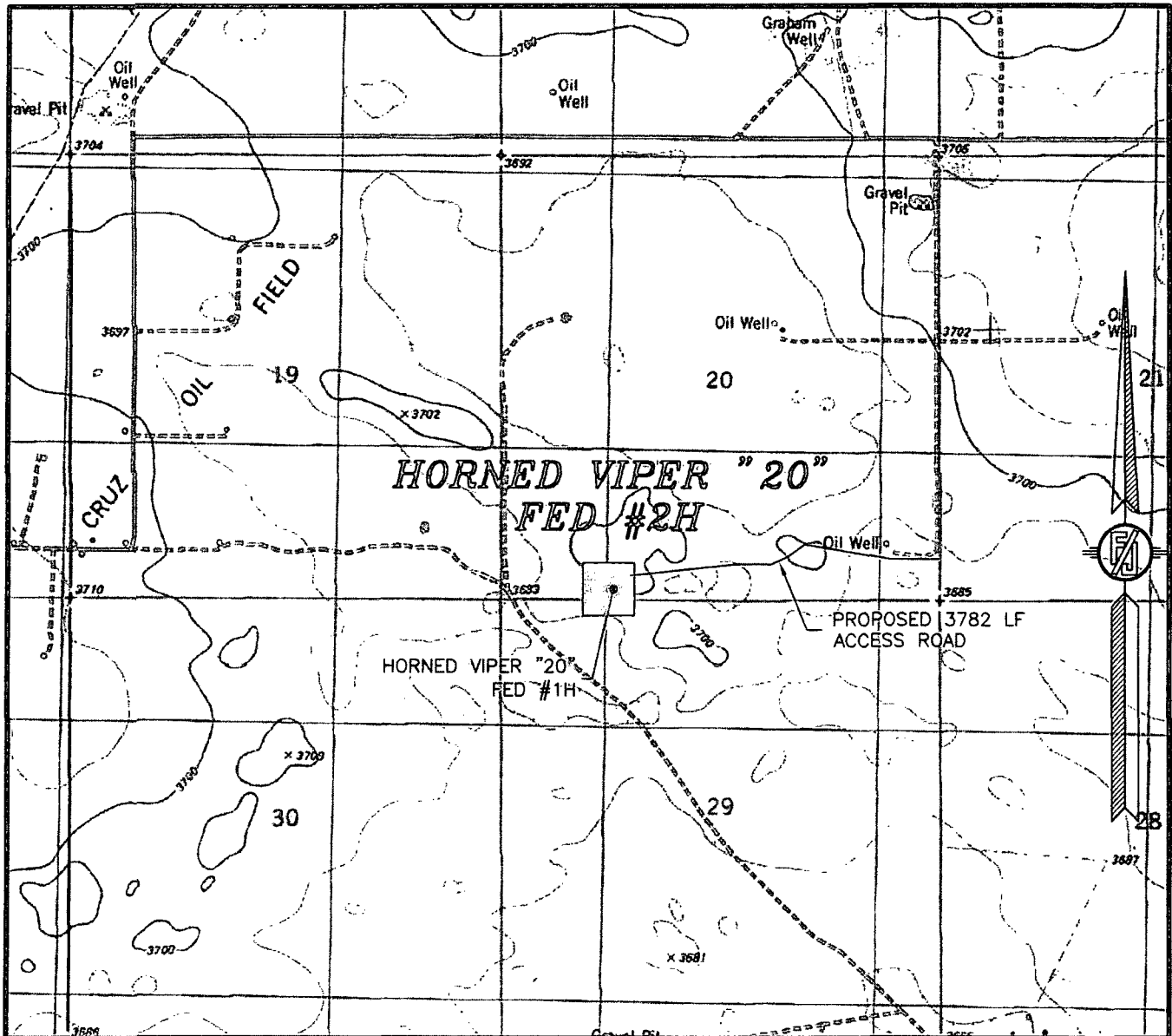
DEVON ENERGY PRODUCTION COMPANY, L.P.
HORNED VIPER "20" FED #2H
LOCATED 200 FT. FROM THE SOUTH LINE
AND 1300 FT. FROM THE WEST LINE OF
SECTION 20, TOWNSHIP 23 SOUTH,
RANGE 33 EAST, N.M.P.M.
LEA COUNTY, STATE OF NEW MEXICO

NOVEMBER 5, 2013

SURVEY NO. 2137A

MADRON SURVEYING, INC. 301 SOUTH CANAL (575) 234-3341 CARLSBAD, NEW MEXICO

SECTION 20, TOWNSHIP 23 SOUTH, RANGE 33 EAST, N.M.P.M.
LEA COUNTY, STATE OF NEW MEXICO
LOCATION VERIFICATION MAP



USGS QUAD MAP:
TIP TOP WELLS

NOT TO SCALE

DEVON ENERGY PRODUCTION COMPANY, L.P.

HORNED VIPER "20" FED #2H

LOCATED 200 FT. FROM THE SOUTH LINE

AND 1300 FT. FROM THE WEST LINE OF

SECTION 20, TOWNSHIP 23 SOUTH,

RANGE 33 EAST, N.M.P.M.

LEA COUNTY, STATE OF NEW MEXICO

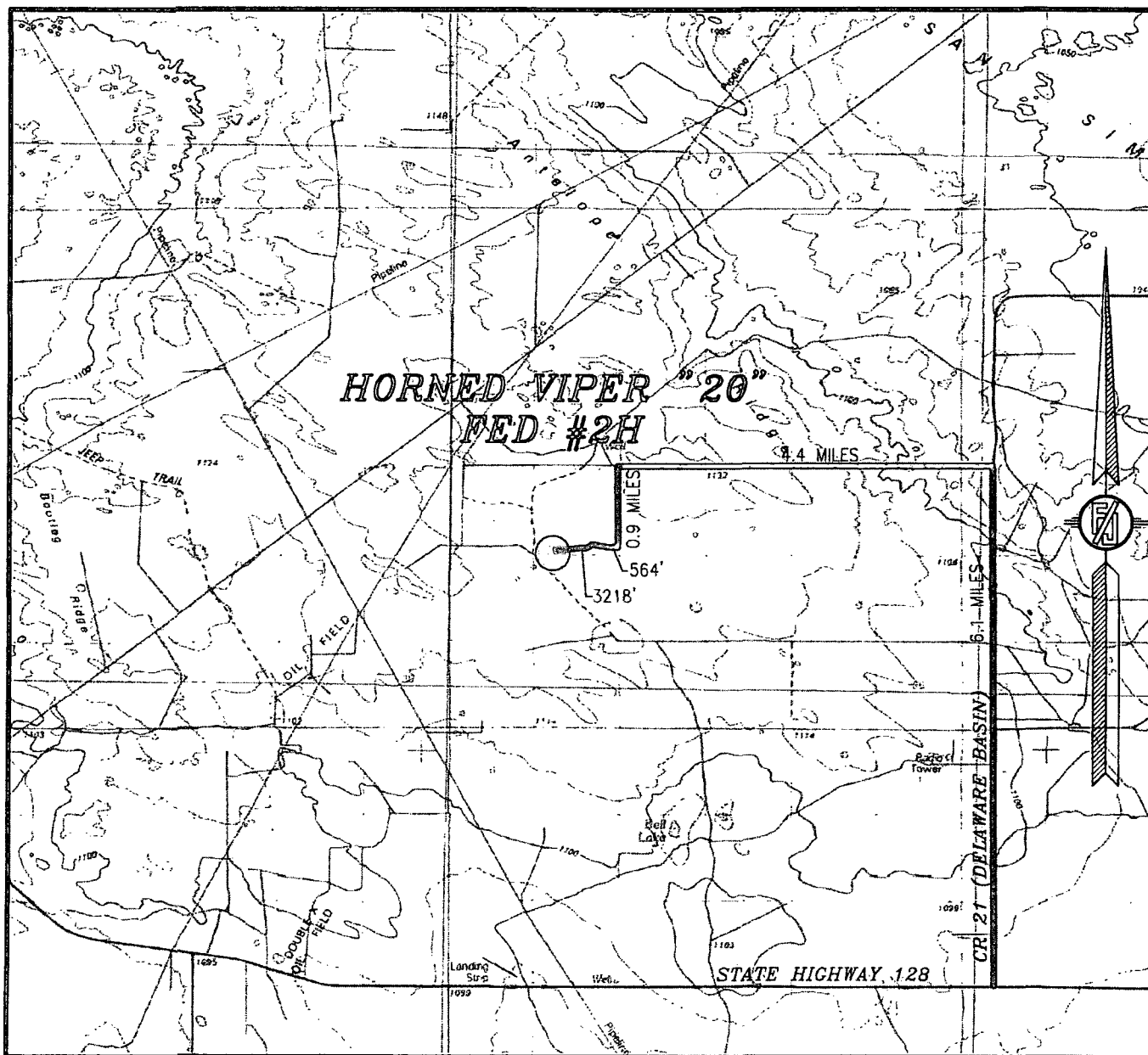
NOVEMBER 5, 2013

SURVEY NO. 2137A

MADRON SURVEYING, INC. 301 SOUTH CANAL
(575) 234-3341

CARLSBAD, NEW MEXICO

SECTION 20, TOWNSHIP 23 SOUTH, RANGE 33 EAST, N.M.P.M.
LEA COUNTY, STATE OF NEW MEXICO
VICINITY MAP



NOT TO SCALE

DEVON ENERGY PRODUCTION COMPANY, L.P.

HORNED VIPER "20" FED #2H
LOCATED 200 FT. FROM THE SOUTH LINE
AND 1300 FT. FROM THE WEST LINE OF
SECTION 20, TOWNSHIP 23 SOUTH,
RANGE 33 EAST, N.M.P.M.
LEA COUNTY, STATE OF NEW MEXICO

DIRECTIONS TO LOCATION

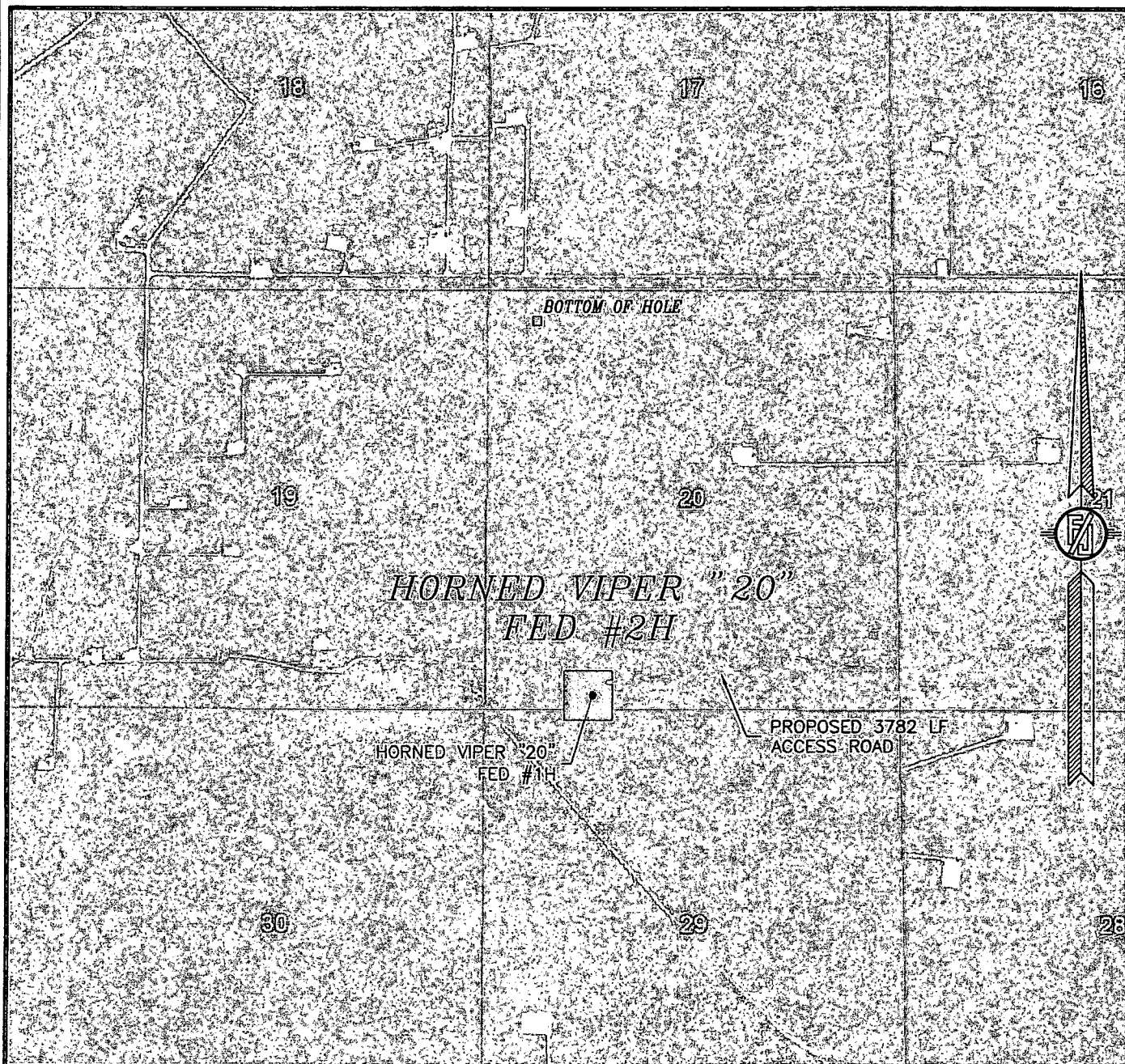
FROM STATE HIGHWAY 128 AND CR 21 (DELAWARE BASIN) GO NORTH
ON CR 21 6.1 MILES, TURN LEFT ON CALICHE ROAD AND GO WEST
4.4 MILES, TURN LEFT ON CALICHE ROAD AND GO SOUTH 0.9 MILES,
TURN RIGHT ON 2-TRACK ROAD AND GO WEST 564' AND FOLLOW
PROPOSED ROAD SURVEY FLAGS WEST 3218' TO THE NORTHEAST
CORNER OF PROPOSED PAD FOR THIS LOCATION.

NOVEMBER 5, 2013

MADRON SURVEYING, INC. 301 SOUTH CANAL
(575) 234-3341

SURVEY NO. 2137A
CARLSBAD, NEW MEXICO

SECTION 20, TOWNSHIP 23 SOUTH, RANGE 33 EAST, N.M.P.M.
LEA COUNTY, STATE OF NEW MEXICO
AERIAL PHOTO



NOT TO SCALE
AERIAL PHOTO:
GOOGLE EARTH
MARCH 2012

DEVON ENERGY PRODUCTION COMPANY, L.P.

HORNER VIPER "20" FED #2H

LOCATED 200 FT. FROM THE SOUTH LINE
AND 1300 FT. FROM THE WEST LINE OF
SECTION 20, TOWNSHIP 23 SOUTH,
RANGE 33 EAST, N.M.P.M.
LEA COUNTY, STATE OF NEW MEXICO

NOVEMBER 5, 2013

SURVEY NO. 2137A

MADRON SURVEYING, INC. 301 SOUTH CANAL (575) 234-3341 CARLSBAD, NEW MEXICO

