

District I  
1625 N. French Dr., Hobbs, NM 88240  
Phone: (575) 393-6161 Fax: (575) 393-0720  
District II  
811 S. First St., Artesia, NM 88210  
Phone: (575) 748-1283 Fax: (575) 748-9720  
District III  
1000 Rio Brazos Road, Aztec, NM 87410  
Phone: (505) 334-6178 Fax: (505) 334-6170  
District IV  
1220 S. St. Francis Dr., Santa Fe, NM 87505  
Phone: (505) 476-3460 Fax: (505) 476-3462

State of New Mexico

HOBBBS Energy, Minerals & Natural Resources Department

OIL CONSERVATION DIVISION

1220 South St. Francis Dr.

Santa Fe, NM 87505

Form C-102

Revised August 1, 2011

Submit one copy to appropriate

District Office

☐ AMENDED REPORT

JUN 20 2014

RECEIVED

WELL LOCATION AND ACREAGE DEDICATION PLAT

<sup>1</sup> API Number 30-025-41933	<sup>2</sup> Pool Code 50510	<sup>3</sup> Pool Name Querecho Plains Bone Spring
<sup>4</sup> Property Code 3313386	<sup>5</sup> Property Name QUERECHO 28 OB FEDERAL COM	<sup>6</sup> Well Number 1H
<sup>7</sup> OGRID No. 14744	<sup>8</sup> Operator Name MEWBOURNE OIL COMPANY	<sup>9</sup> Elevation 3714'

<sup>10</sup> Surface Location

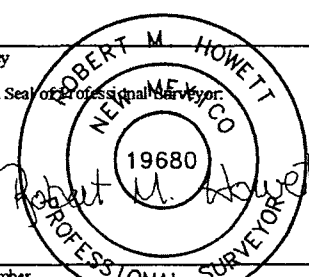
UL or lot no.	Section	Township	Range	Lot Idn	Feet from the	North/South line	Feet from the	East/West line	County
0	28	18-S	32-E		170	SOUTH	1420	EAST	LEA

<sup>11</sup> Bottom Hole Location If Different From Surface

UL or lot no.	Section	Township	Range	Lot Idn	Feet from the	North/South line	Feet from the	East/West line	County
B	28	18-S	32-E		330	NORTH	2310	EAST	LEA

<sup>12</sup> Dedicated Acres 160	<sup>13</sup> Joint or Infill	<sup>14</sup> Consolidation Code	<sup>15</sup> Order No.
--------------------------------------	-------------------------------	----------------------------------	-------------------------

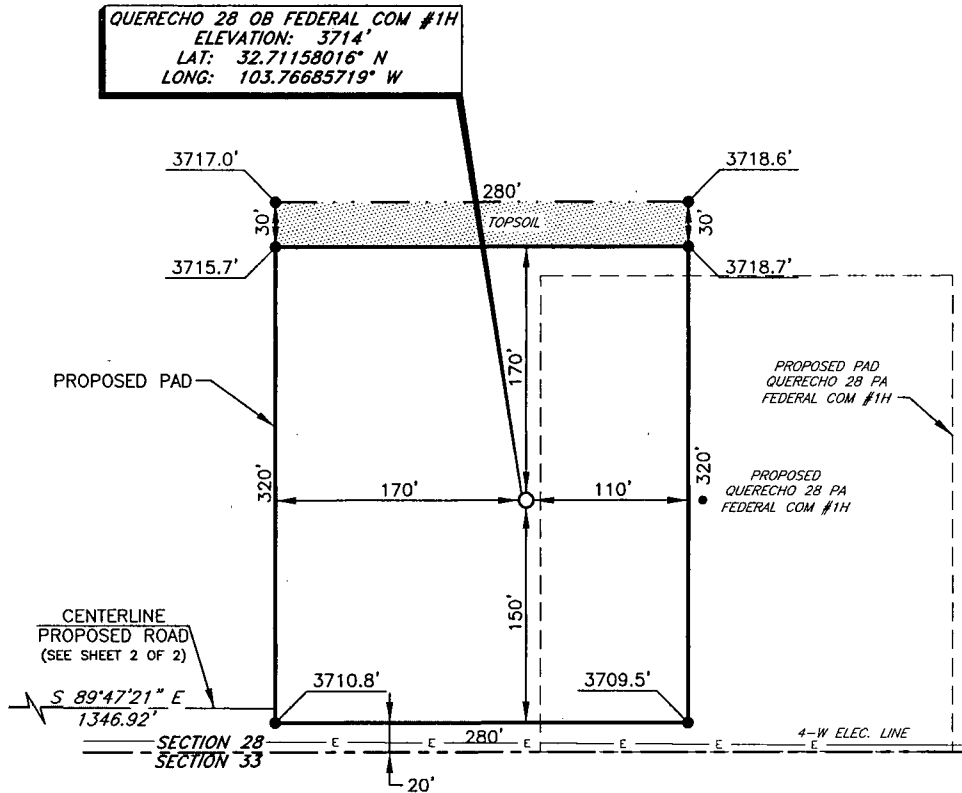
No allowable will be assigned to this completion until all interests have been consolidated or a non-standard unit has been approved by the division.

<p><sup>16</sup></p> <p>Project Area</p> <p>Producing Area</p> <p>GEODETIC DATA NAD 27 GRID - NM EAST SURFACE LOCATION N 625049.3 E 674236. LAT: 32° 11' 58.016" N LONG: 105° 56' 57.19" W</p> <p>CORNER DATA NAD 27 GRID - NM EAST A: FND BC 913 N 622869.6 - E 670383.8 B: FND BC 913 N 625513.3 - E 670370.6 C: FND BC 913 N 628151.4 - E 670355.2 D: FND BC 913 N 628155.7 - E 672986.7 E: FND BC 913 N 628158.0 - E 675622.0 F: FND BC 913 N 625520.3 - E 675640.2 G: FND BC 913 N 622882.8 - E 675656.9 H: FND BC 913 N 622876.4 - E 673020.9</p>	<p><sup>17</sup> OPERATOR CERTIFICATION</p> <p>I hereby certify that the information contained herein is true and complete to the best of my knowledge and belief, and that this organization either owns a working interest or unleased mineral interest in the land including the proposed bottom hole location or has a right to drill this well at this location pursuant to a contract with an owner of such a mineral or working interest, or to a voluntary pooling agreement or a compulsory pooling order heretofore entered by the division.</p> <p>Signature: <u>Bradley Bishop</u> 11-22-13 Date</p> <p>Printed Name: <u>BRADLEY BISHOP</u></p> <p>E-mail Address:</p> <p><sup>18</sup> SURVEYOR CERTIFICATION</p> <p>I hereby certify that the well location shown on this plat was plotted from field notes of actual surveys made by me or under my supervision, and that the same is true and correct to the best of my belief.</p> <p>9/4/13 Date of Survey</p> <p>Signature and Seal of Professional Surveyor: </p> <p>19680 Certificate Number</p> <p>REVISED: WELL NAME 11/18/13</p>
---	---

JUN 24 2014

## MEWBOURNE OIL COMPANY

Querecho 28 OB Federal Com #1H  
 (170' FSL & 1420' FEL)  
 Section 28, T-18-S, R-32-E,  
 N. M. P. M., Lea Co., New Mexico

DIRECTIONS TO LOCATION

From the intersection of St. Hwy. #529 and CR-126A (Maljamar):

Go South on CR-126A approx. 7.9 mile to a lease road.

Turn left and go East approx. 2.6 mile.

Turn left and go Northeast approx. 0.3 mile to a "T".

Turn left at "T" go Northwest approx. 0.3 mile to a "Y".

Stay right at "Y" and go Northeast approx. 0.3 mile.

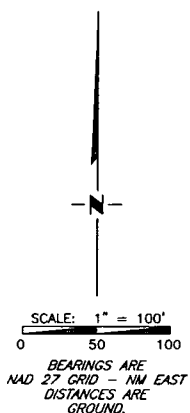
Turn left and go North approx. 0.3 mile to a "T".

Turn left and go West approx 0.8 mile to a "T".

Turn right and go North winding Northwest approx. 0.7 mile to a "T".

Turn right and go East through an existing pad approx. 0.1 mile to road survey.

Follow road survey East approx. 0.3 mile to this location.



Copyright 2012 - All Rights Reserved

1	WELL NAME	11/18
NO.	REVISION	DATE
JOB NO.:	LS130389	
DWG. NO.:	130389PAD	

PROSPERITY CONSULTANTS, LLC



2251 Double Creek Drive, Suite 602, Round Rock, Texas 78664

© (512) 992-2087 f (512) 251-2518

SCALE: 1" = 100'

DATE: 9/4/13

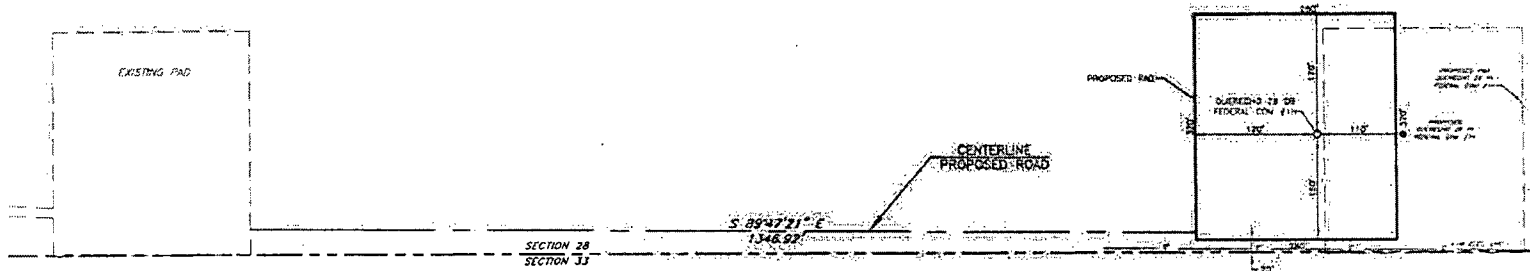
SURVEYED BY: BK/IE

DRAWN BY: AF

APPROVED BY: LWB

SHEET : 1 OF 2

MEWBOURNE OIL COMPANY  
 Proposed Road For  
 Querecho 28 OB Federal Com #1H  
 (170' FSL & 1420' FEL)  
 Section 28, T-18-S, R-32-E,  
 N. M. P. M., Lea Co., New Mexico



Copyright 2012 - All Rights Reserved

SCALE: 1" = 200'  
 DATE: 9/4/13  
 SURVEYED BY: BK/E  
 DRAWN BY: AF  
 APPROVED BY: LWB  
 SHEET : 2 OF 2

PROPERTY CONSULTANTS, LLC



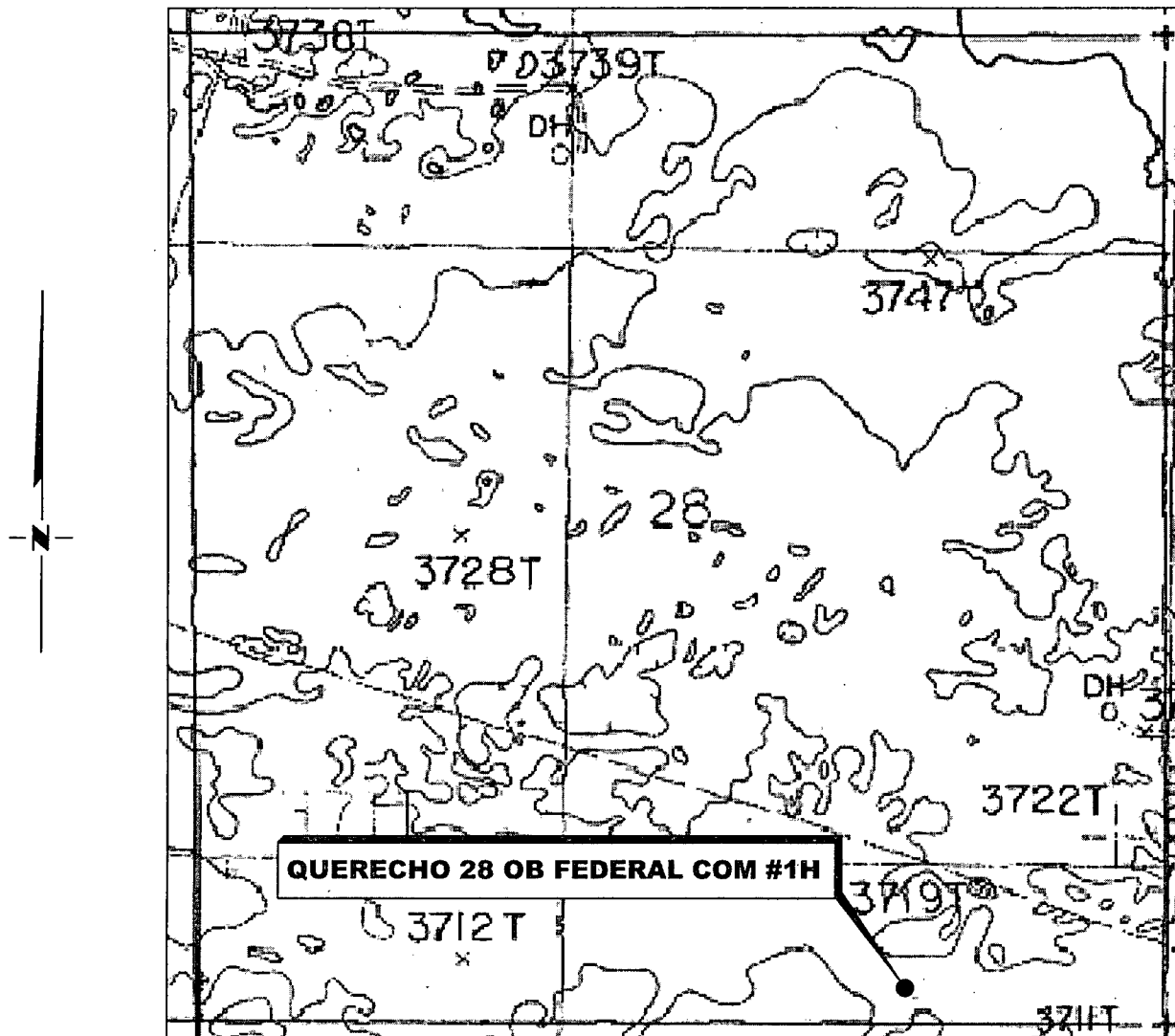
1	WELL NAME	11/18
NO.	REVISION	DATE
JOB NO.	LS130389	
DWG. NO.	130389PAD2	

7251 Double Creek Drive, Suite 607, Round Rock, Texas 78664

615121 993-2087 / 615121 251-2515

# LOCATION VERIFICATION MAP

Exhibit 3B



*SECTION 28, TWP. 18 SOUTH, RGE. 32 EAST,  
N. M. P. M., LEA COUNTY, NEW MEXICO*

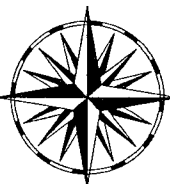
OPERATOR: Mewbourne Oil Company  
LEASE: Querecho 28 OB Federal Com  
WELL NO.: 1H  
ELEVATION: 3714'

LOCATION: 170' FSL & 1420' FEL  
CONTOUR INTERVAL: 10'  
USGS TOPO. SOURCE MAP:  
Greenwood Lake, NM (Prov. Ed. 1985)

Copyright 2012 - All Rights Reserved

1	WELL NAME	11/18
NO.	REVISION	DATE
JOB NO.: LS130389		
DWG. NO.: 130389LVM		

PROSPERITY CONSULTANTS, LLC



2251 Double Creek Drive, Suite 602, Round Rock, Texas 78664

o (512) 992-2087 f (512) 251-2518

SCALE: 1" = 1000'

DATE: 9/4/13

SURVEYED BY: BK/IE

DRAWN BY: AF

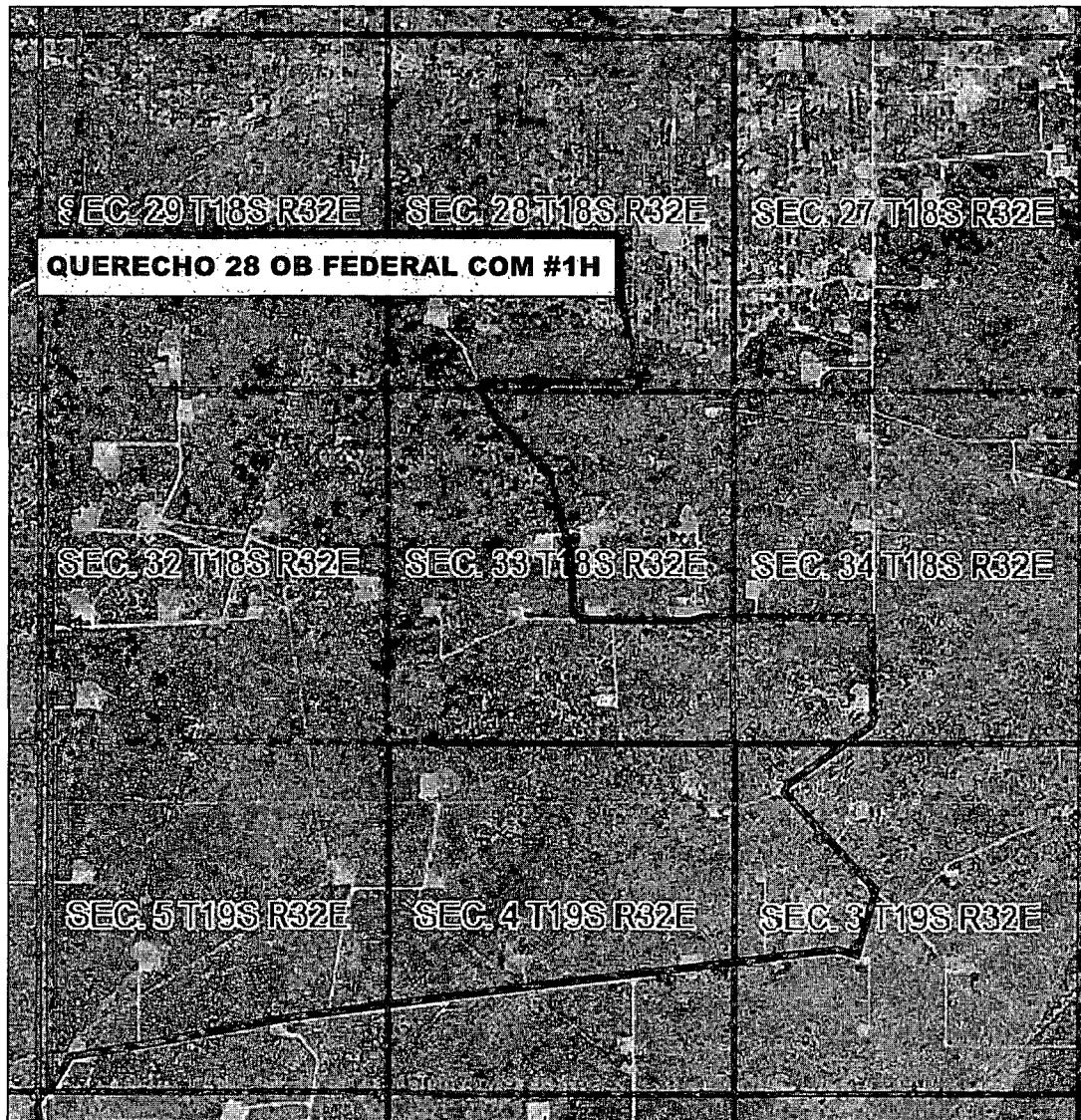
APPROVED BY: LWB

SHEET : 1 OF 1

# VICINITY MAP

NOT TO SCALE

Exhibit 3C



*SECTION 28, TWP. 18 SOUTH, RGE. 32 EAST,  
N. M. P. M., LEA COUNTY, NEW MEXICO*

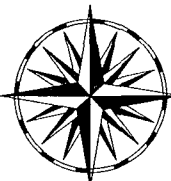
OPERATOR: Mewbourne Oil Company  
LEASE: Querecho 28 OB Federal Com  
WELL NO.: 1H

LOCATION: 170' FSL & 1420' FEL  
ELEVATION: 3714'

Copyright 2012 - All Rights Reserved

1	WELL NAME	11/18
NO.	REVISION	DATE
JOB NO.: LS130389		
DWG. NO.: 130389VM		

PROSPERITY CONSULTANTS, LLC



2251 Double Creek Drive, Suite 602, Round Rock, Texas 78664

o (512) 992-2087 f (512) 251-2518

SCALE: N.T.S.
DATE: 9/4/13
SURVEYED BY: BK/IE
DRAWN BY: AF
APPROVED BY: LWB
SHEET : 1 OF 1

Exhibit 3D

SESW

SWSE

Querecho 28 OB Flow Line

Querecho 28 OB Flow Line

NENW

NWNE

Google Earth  
Earth Point

© 1996

Imagery Date: 3/2/2012 32°42'40.76"N 103°46'17.99"W elev: 3715 ft eye alt: 5832 ft

- Drilling (Well Start)
- × Abandoned Location (Permit)
- ✱ Gas Well
- Oil Well
- ✱ Oil and Gas Well
- Other (Observation, etc)
- ✱ Injection Well
- Suspended
- ✱ Plugged Gas Well
- ✱ Plugged Oil Well
- ✱ Plugged Oil and Gas
- ✱ Dry Hole (No Shows)
- ✱ Dry Hole w/Gas Show
- ✱ Dry Hole w/Oil Show
- ✱ Dry Hole w/Oil and Gas Show

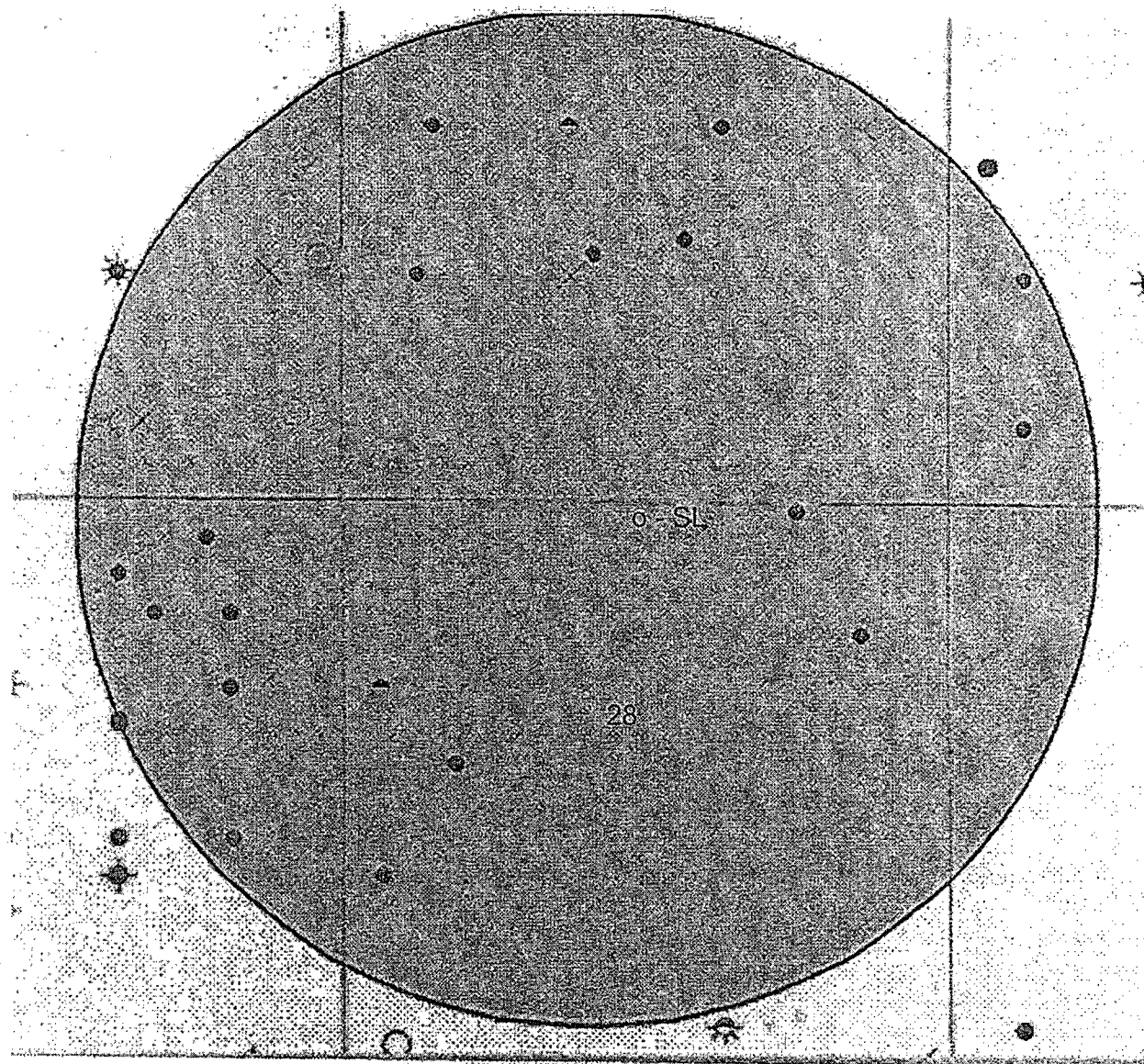


Exhibit "4" - SL - Querecho 28 OB Federal #1H, 170' FSL & 1420' FEL, Sec. 28 T18S R32E

- Drilling (Well Start)
- × Abandoned Location (Permit)
- ✱ Gas Well
- Oil Well
- ✱ Oil and Gas Well
- Other (Observation, etc)
- Injection Well
- Suspended
- ✱ Plugged Gas Well
- ✱ Plugged Oil Well
- ✱ Plugged Oil and Gas
- Dry Hole (No Shows)
- ✱ Dry Hole w/Gas Show
- ✱ Dry Hole w/Oil Show
- ✱ Dry Hole w/Oil and Gas Show

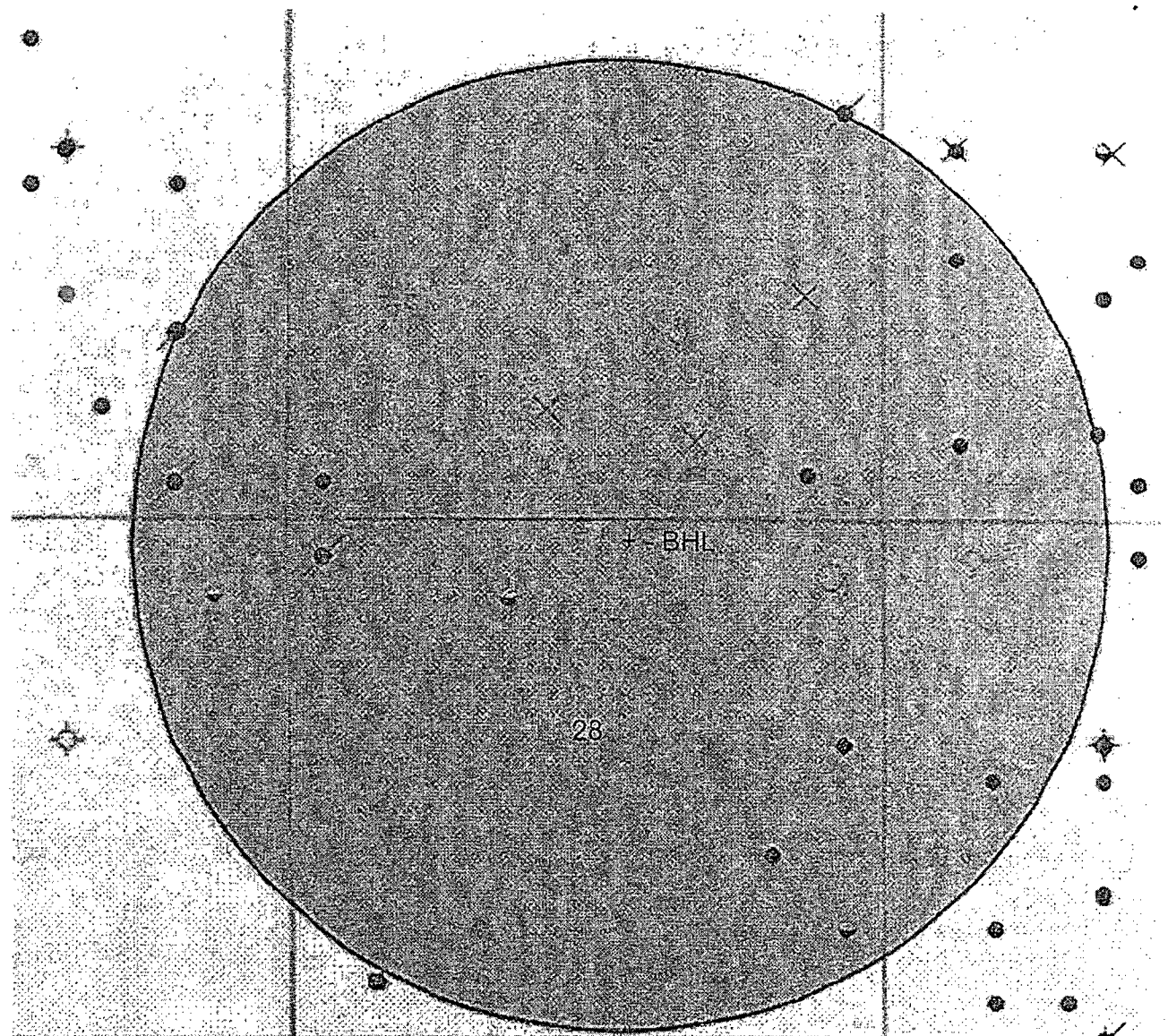


Exhibit "4A" - BHL - Querecho 28 OB Federal #1H - 330' FNL & 2310' FEL, Sec. 28 T18S R32E