

# Exhibit A-1

District I  
1025 N. French Dr., Hobbs, NM 88240  
Phone: (575) 293-6161 Fax: (575) 393-0720  
District II  
811 S. First St., Artesia, NM 88210  
Phone: (575) 748-1283 Fax: (575) 748-0720  
District III  
1000 Rio Brazos Road, Aztec, NM 87410  
Phone: (505) 334-6178 Fax: (505) 334-6179  
District IV  
1220 S. St. Francis Dr., Santa Fe, NM 87505  
Phone: (505) 476-3460 Fax: (505) 476-3461

State of New Mexico

Form C-102

**HOBBS OGD** Energy, Minerals & Natural Resources Department  
OIL CONSERVATION DIVISION

Revised August 1, 2011

Submit one copy to appropriate  
District Office

1220 South St. Francis Dr.  
Santa Fe, NM 87505

☐ AMENDED REPORT

**RECEIVED**

## WELL LOCATION AND ACREAGE DEDICATION PLAT

1 API Number <b>30-025-41934</b>		2 Pool Code <b>5150</b>		3 Pool Name <b>BELL LAKE, BONE SPRING, NORTH</b>	
4 Property Code <b>313385</b>		5 Property Name <b>BRININSTOOL 24 23 33 USA</b>			6 Well Number <b>III</b>
7 OGRID No. <b>4323</b>		8 Operator Name <b>CHEVRON U.S.A. INC.</b>			9 Elevation <b>3610'</b>

### 10 Surface Location

UL or lot no.	Section	Township	Range	Lot Idn	Feet from the	North/South line	Feet from the	East/West line	County
D	24	23 SOUTH	33 EAST, N.M.P.M.		150'	NORTH	400'	WEST	LEA

### 11 Bottom Hole Location If Different From Surface

UL or lot no.	Section	Township	Range	Lot Idn	Feet from the	North/South line	Feet from the	East/West line	County
M	24	23 SOUTH	33 EAST, N.M.P.M.		330'	SOUTH	400'	WEST	LEA

12 Dedicated Acres <b>160</b>	13 Joint or Infill	14 Consolidation Code	15 Order No.
----------------------------------	--------------------	-----------------------	--------------

No allowable will be assigned to this completion until all interests have been consolidated or a non-standard unit has been approved by the division.

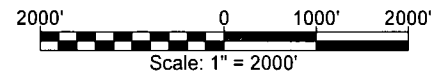
	<b>BRININSTOOL 24 23 33 USA 1H</b> X= 747.350 NAD 27 Y= 472.638 LAT. 32.296861 LONG. 103.532837 X= 788.534 NAD83 Y= 472.698 LAT. 32.296985 LONG. 103.533318 ELEVATION -3510' NAVD 83	<b>17 OPERATOR CERTIFICATION</b> I hereby certify that the information contained herein is true and complete to the best of my knowledge and belief, and that this organization either owns a working interest or undivided mineral interest in the land including the proposed bottom hole location or has a right to drill this well at this location pursuant to a contract with the owner of such a mineral or working interest, or to a voluntary pooling agreement or a compulsory pooling order heretofore entered by the division. <i>Denise P. Kerton</i> 02/20/2014 Signature Date <b>Denise P. Kerton</b> Printed Name <b>Lea Kejd@Chevron.com</b> E-mail Address
	<b>PROPOSED BOTTOM HOLE LOCATION</b> X= 747.387 NAD 27 Y= 467.842 LAT. 32.283676 LONG. 103.532834 X= 788.570 NAD83 Y= 467.901 LAT. 32.283799 LONG. 103.533314	<b>18 SURVEYOR CERTIFICATION</b> I hereby certify that the well location shown on this plat was plotted from field notes of actual surveys made by me or under my supervision, and that the same is true and correct to the best of my belief. <b>7.9.13</b> Date of Survey <i>[Signature]</i> Signature and Seal of Professional Surveyor <b>Wm. J. Daniel III</b> <b>NEW MEXICO</b> <b>REGISTERED PROFESSIONAL SURVEYOR</b> <b>15078</b> Certificate Number <b>#15078</b>

JUN 24 2014

# Exhibit A-2



VICINITY MAP



**CHEVRON U.S.A. INC.**  
 BRININSTOOL 24 23 33 USA NO. 1H WELL  
 LOCATED 150' FNL AND 400' FWL  
 SECTION 24, T23S-R33E  
 LEA COUNTY, NEW MEXICO



Lafayette New Orleans Houston  
 135 Regency Sq. Lafayette, LA 70508  
 Ph. 337-237-2200 Fax. 337-232-3299  
[www.fenstermaker.com](http://www.fenstermaker.com)

DRAWN BY: BMO

PROJ. MGR.: DBM

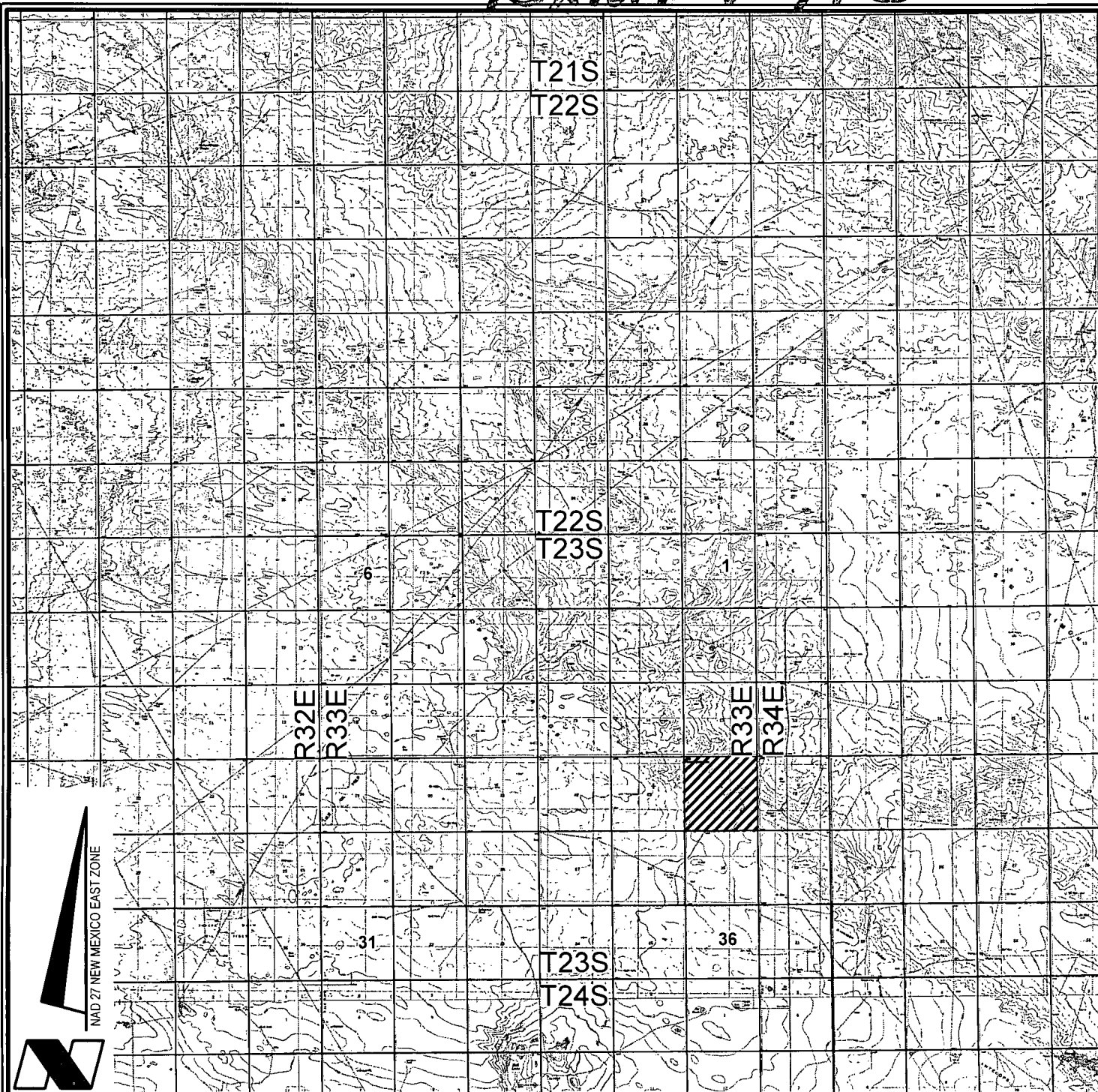
REVISED: 07/03/13 VHV

DATE: APRIL 03, 2013

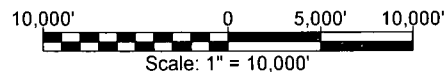
SHEET 1 OF 3 SHEETS

FILENAME: T:\2013\2139593\DWG\CUI\_Brininstool 24 23 33 USA 1H\_APD.dwg

# Exhibit A-3



VICINITY MAP



**CHEVRON U.S.A. INC.**

BRINSTOOL 24 23 33 USA NO. 1H WELL

LOCATED 150' FNL AND 400' FWL

SECTION 24, T23S-R33E

LEA COUNTY, NEW MEXICO



Lafayette New Orleans Houston  
135 Regency Sq. Lafayette, LA 70508  
Ph. 337-237-2200 Fax. 337-232-3299  
[www.fenstermaker.com](http://www.fenstermaker.com)

DRAWN BY: BMO

PROJ. MGR.: DBM

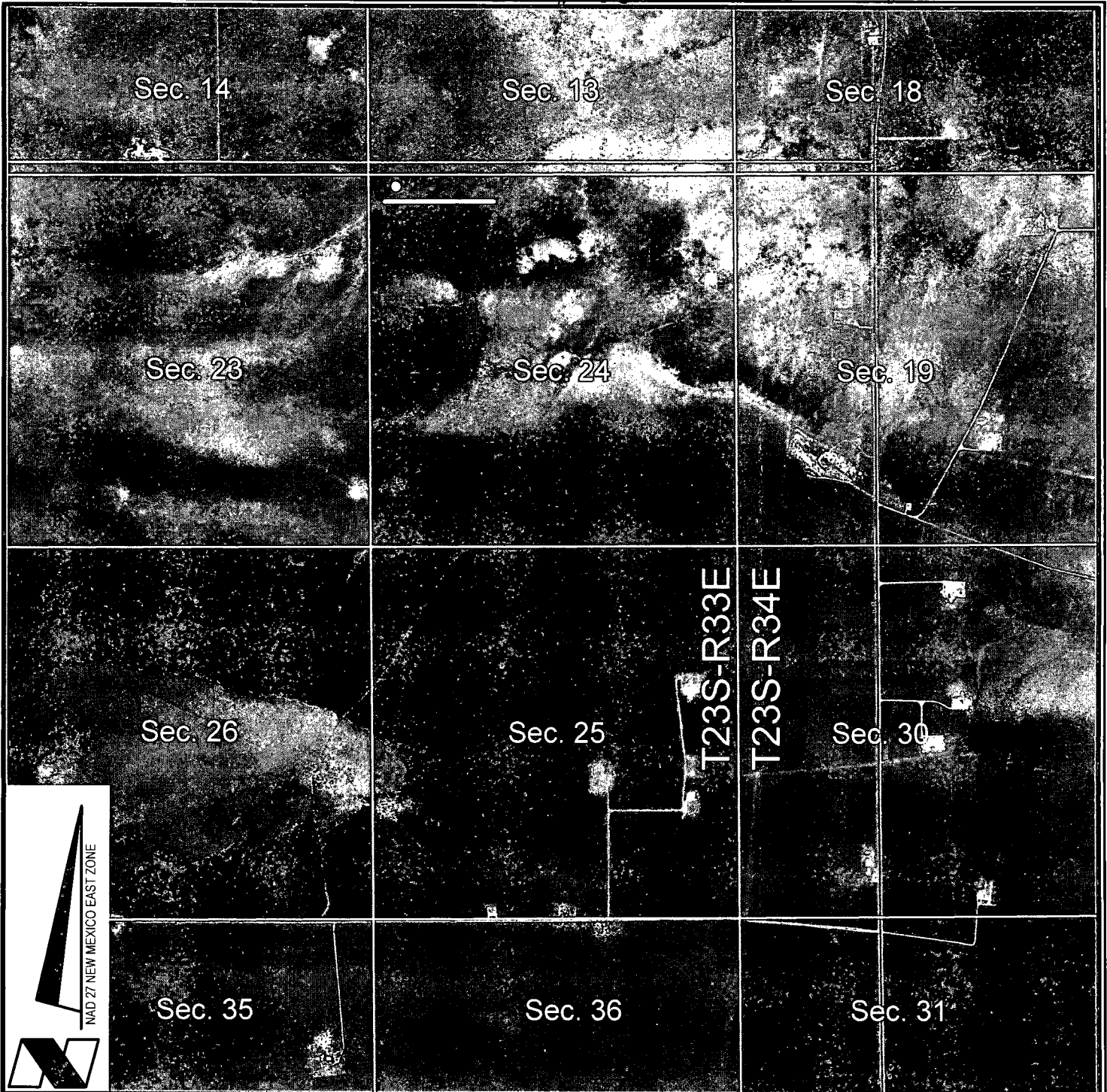
REVISED: 07/03/13 VHV

DATE: APRIL 03, 2013

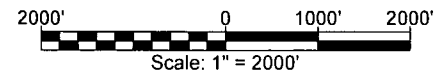
SHEET 2 OF 3 SHEETS




FILENAME: T:\2013\2139593\DWG\CUI\_Brininstool 24 23 33 USA 1H\_APD.dwg

# Exhibit A-4



VICINITY MAP



-  = FEDERAL LAND
-  = FEE LAND
-  = STATE LAND

**CHEVRON U.S.A. INC.**  
**BRINSTOOL 24 23 33 USA NO. 1H WELL**  
 LOCATED 150' FNL AND 400' FWL  
 SECTION 24, T23S-R33E  
 LEA COUNTY, NEW MEXICO



Lafayette New Orleans Houston  
 135 Regency Sq. Lafayette, LA 70508  
 Ph. 337-237-2200 Fax. 337-232-3299  
[www.fenstermaker.com](http://www.fenstermaker.com)

DRAWN BY: BMO

PROJ. MGR.: DBM

REVISED: 07/03/13 VHV

DATE: APRIL 03, 2013

SHEET 3 OF 3 SHEETS

FILENAME: T:\2013\2139593\DWG\CUI\_Brinistool 24 23 33 USA 1H\_APD.dwg



