

District I
1625 N. French Dr., Hobbs, NM 88240
Phone: (575) 393-6161 Fax: (575) 393-0720
District II
811 S. First St., Artesia, NM 88210
Phone: (575) 748-1283 Fax: (575) 748-9720
District III
1000 Rio Brazos Road, Aztec, NM 87410
Phone: (505) 334-6178 Fax: (505) 334-6170
District IV
1220 S. St. Francis Dr., Santa Fe, NM 87505
Phone: (505) 476-3460 Fax: (505) 476-3462

State of New Mexico
Energy, Minerals & Natural Resources Department
OIL CONSERVATION DIVISION
1220 South St. Francis Dr.
Santa Fe, NM 87505

Form C-102
Revised August 1, 2011
Submit one copy to appropriate
District Office
☐ AMENDED REPORT

WELL LOCATION AND ACREAGE DEDICATION PLAT

¹ API Number 30-025-41952	² Pool Code 40470	³ Pool Name ABO
⁴ Property Code 313473	⁵ Property Name MOC 2 STATE	⁶ Well Number 1
⁷ OGRID No. 113315	⁸ Operator Name TEXLAND PETROLEUM, LP	⁹ Elevation 3850

¹⁰ Surface Location									
UL or lot no. E	Section 2	Township T-17-S	Range R-36-E	Lot Idn	Feet from the 2308'	North/South line NORTH	Feet from the 502'	East/West line WEST	County LEA

¹¹ Bottom Hole Location If Different From Surface									
UL or lot no.	Section	Township	Range	Lot Idn	Feet from the	North/South line	Feet from the	East/West line	County
¹² Dedicated Acres 40 ¹³ Joint or Infill ¹⁴ Consolidation Code ¹⁵ Order No.									

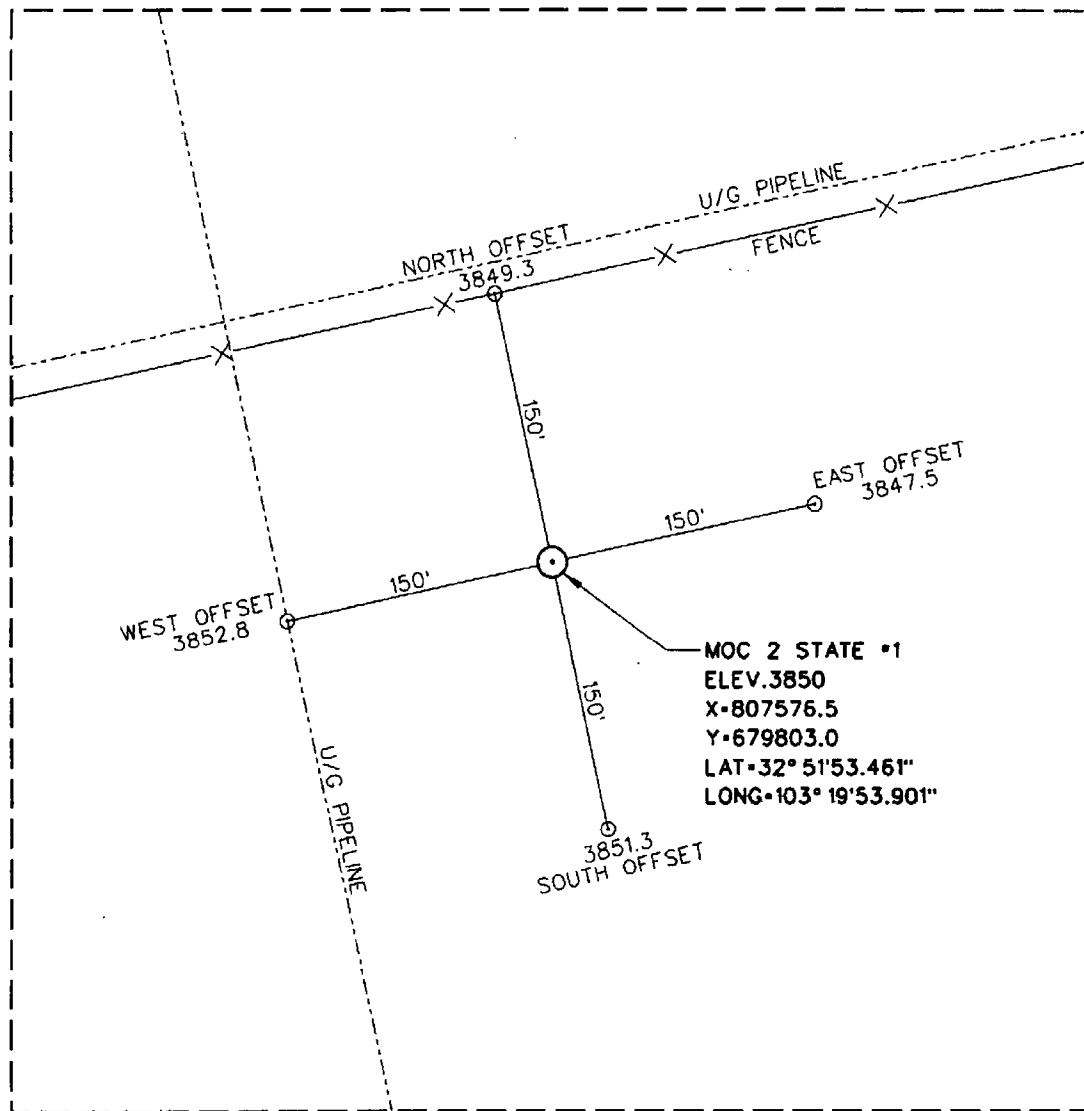
No allowable will be assigned to this completion until all interests have been consolidated or a non-standard unit has been approved by the division.

	SECTION 2	¹⁷ OPERATOR CERTIFICATION <i>I hereby certify that the information contained herein is true and complete to the best of my knowledge and belief, and that this organization either owns a working interest or unleased mineral interest in the land including the proposed bottom hole location or has a right to drill this well at this location pursuant to a contract with an owner of such a mineral or working interest, or to a voluntary pooling agreement or a compulsory pooling order heretofore entered by the division.</i> Signature: <u>Vickie Smith</u> Date: <u>7/10/14</u> Printed Name: <u>Vickie Smith</u> E-mail Address: <u>vsmith@texpetro.com</u>
		¹⁸ SURVEYOR CERTIFICATION <i>I hereby certify that the well location shown on this plat was plotted from field notes of actual surveys made by me or under my supervision, and that the same is true and correct to the best of my belief.</i> Date of Survey: <u>7/2/2014</u> Signature and Seal of Professional Surveyor: <u>Jesse M. Martin</u> Certificate Number 7911 FB-477 PG.20-22

SURVEY DATUM:
HORIZONTAL-NAD27 NEW MEXICO EAST
VERTICAL-NGVD29

7/11 1 4 2014

SECTION 2, TOWNSHIP 17 SOUTH, RANGE 36 EAST, N.M.P.M.
LEA COUNTY, NEW MEXICO



DIRECTIONS TO LOCATION
FROM THE CENTER OF LOVINGTON, NEW MEXICO
TRAVEL SOUTH ALONG STATE HWY. 483 APPROX.
6.0 MILES. TURN LEFT ON CO. RD. 78 AND GO
EAST APPROX. 0.63 MILES. TURN LEFT ON LEASE
ROAD AND GO NORTH 0.5 MILES AND THEN
GO NORTHEAST 0.40 MILES TO LOCATION.

MOC 2 STATE #1
LOCATED 2308 FEET FROM THE NORTH LINE
AND 502 FEET FROM THE WEST LINE OF
SECTION 2, TOWNSHIP 17 SOUTH, RANGE
36 EAST, N.M.P.M.,
LEA COUNTY, NEW MEXICO

SCALE: 1" = 100'	REVISION:	PLAT DATE: 7-3-14
CLIENT: TEXLAND PETROLEUM, LP		
DRAWN BY: B. BURROW	SURVEY DATE: 7-2-14	
SURVEYED BY: J.M. MARTIN	FIELD BOOK: 477, PG. 20-22	
FILE: section3.dgn	FILE NO. 37,812	SHEET NO. 1

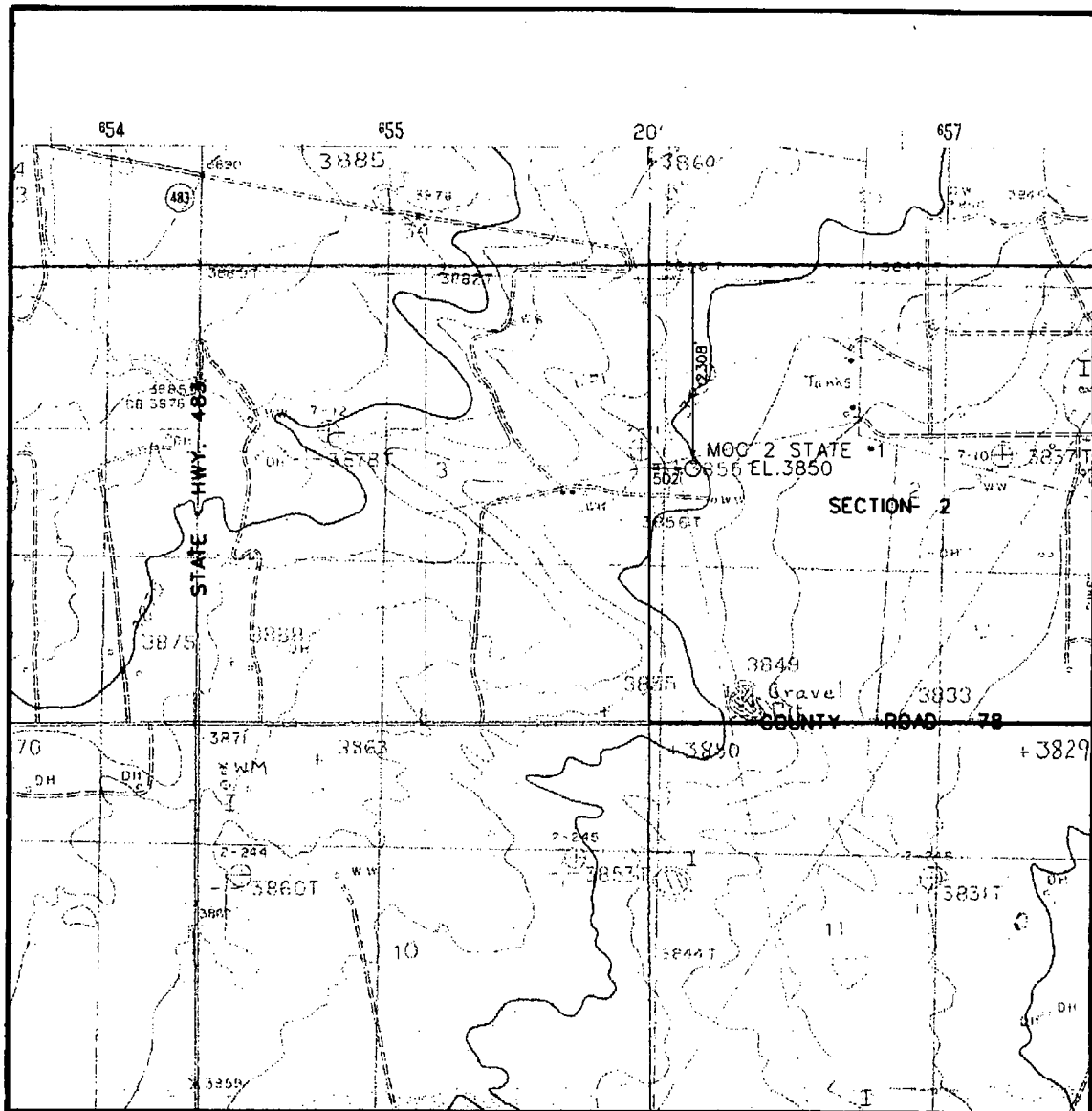


WILSON SURVEYING Co., INC.
Registered Professional Land Surveyors

3330 - 70th Street, Suite 201 - Lubbock, Texas 79413
Office 806.792.4731 Fax 806.792.1546



LOCATION VERIFICATION MAP



Operator: TEXLAND PETROLEUM, L.P. Lease: MOC 2 STATE *1

Description: 2308 FEET FROM THE NORTH LINE AND 502 FEET FROM THE WEST LINE

Section	Township	Range	Survey	County
2	17-S	36-E	N.M.P.M.	LEA



WILSON SURVEYING Co., INC.

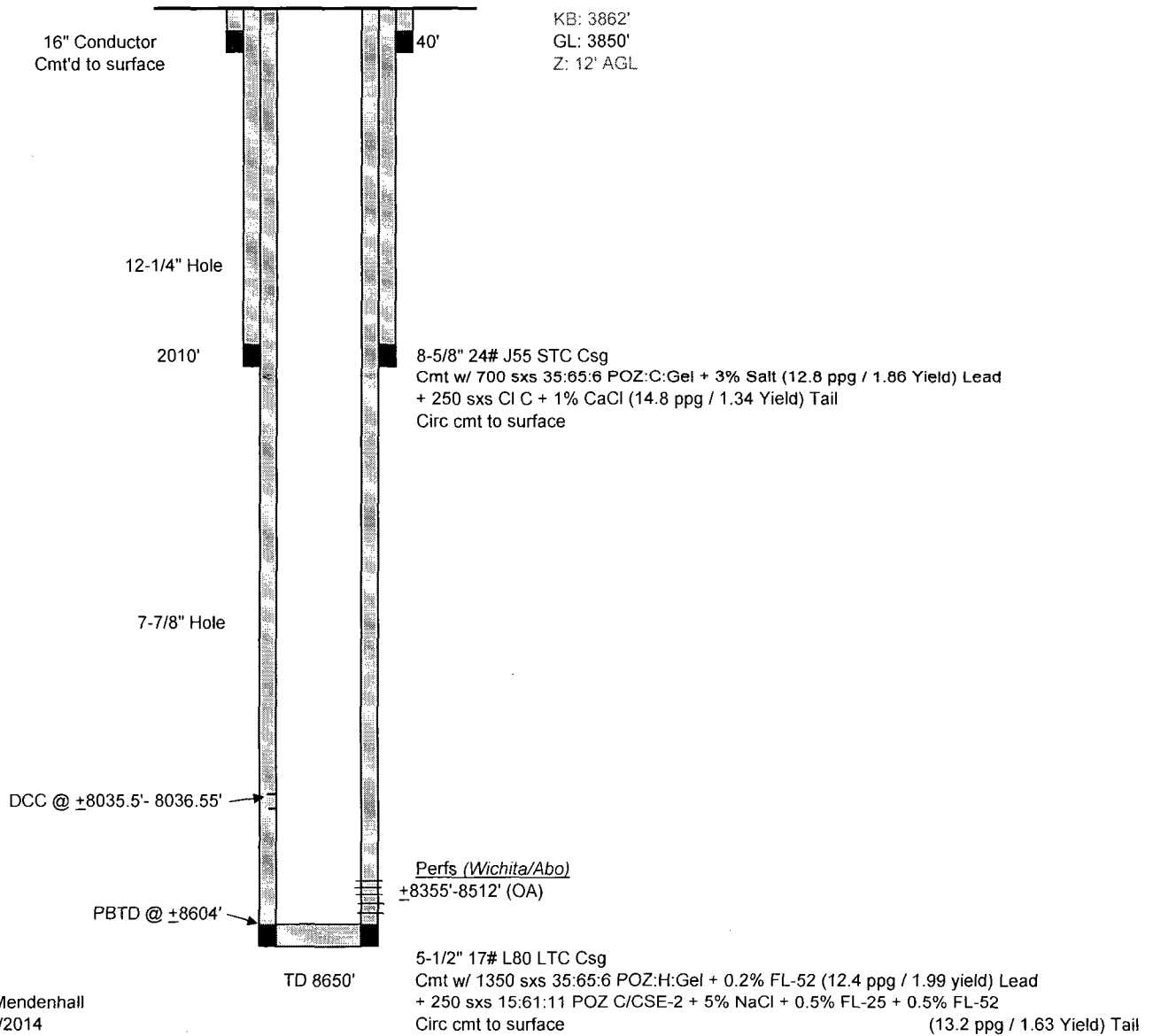
Registered Professional Land Surveyors
Global Positioning System Surveyors

3330 70th ST., SUITE 201 • LUBBOCK, TX. 79413
(806) 792-4731 • FAX (806) 792-1646

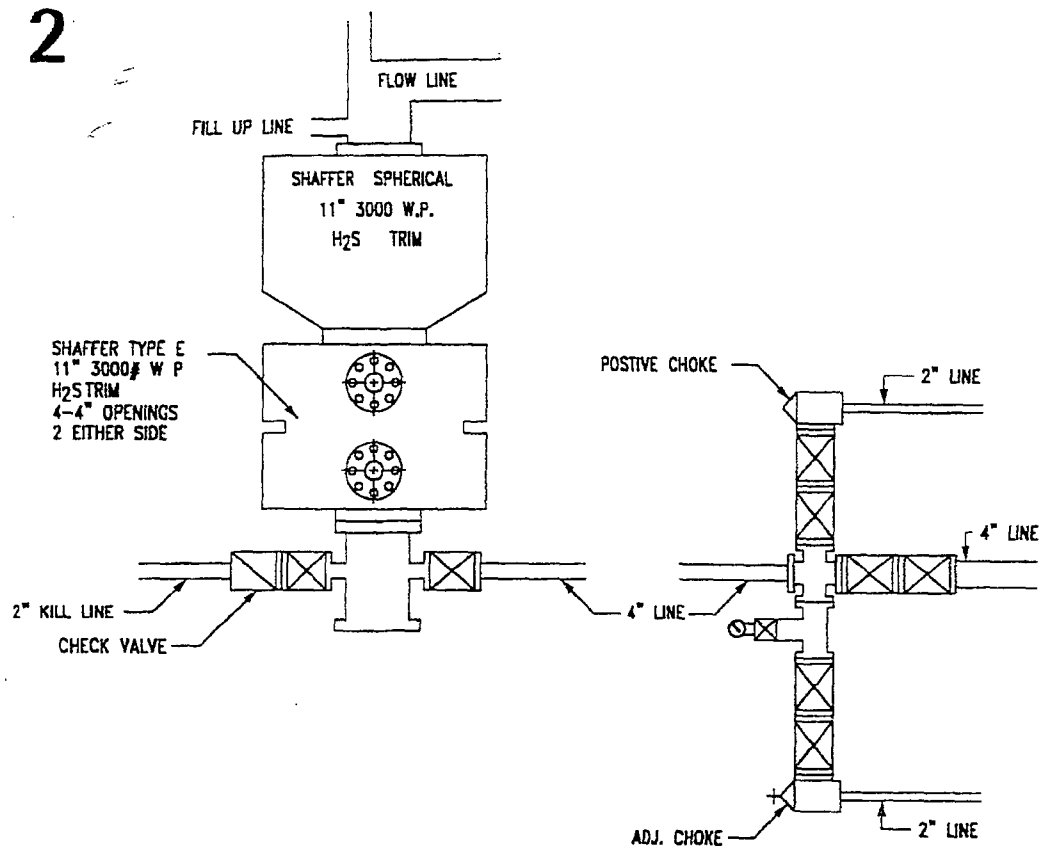


MOC 2 State #1

Proposed Wellbore Schematic

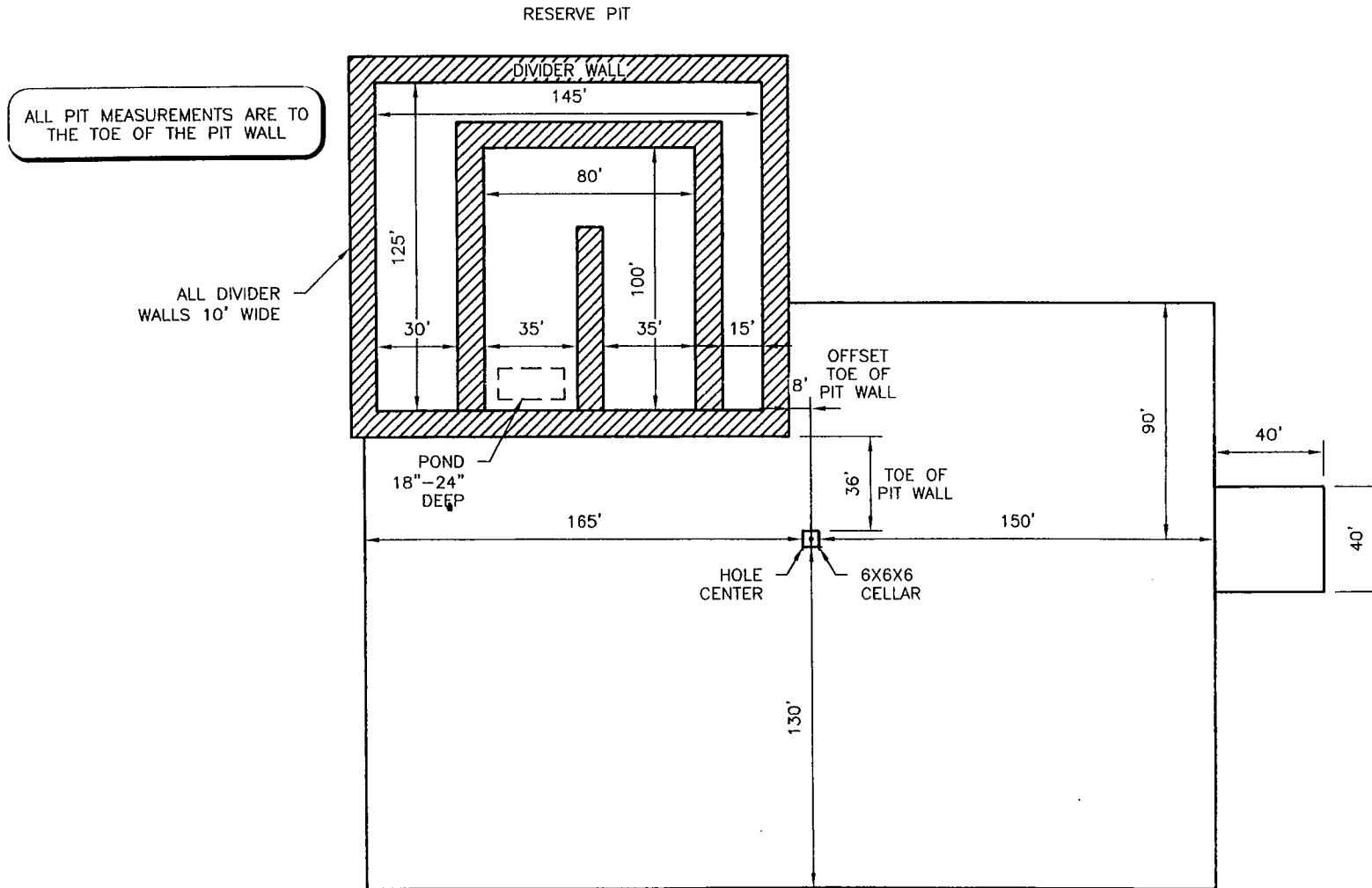
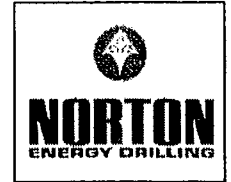


RIG 2





RIG #2 LOCATION PLAT



CLOSED-LOOP SYSTEM DESIGN AND CONSTRUCTION

