

District I  
1625 N. French Dr., Hobbs, NM 88240  
Phone: (575) 393-6161 Fax: (575) 393-0720  
District II  
811 S. First St., Artesia, NM 88210  
Phone: (575) 748-1283 Fax: (575) 748-9720  
District III  
1000 Rio Rancho Road, Aztec, NM 87410  
Phone: (505) 334-6178 Fax: (505) 334-6170  
District IV  
1220 S. St. Francis Dr., Santa Fe, NM 87505  
Phone: (505) 476-3460 Fax: (505) 476-3462

State of New Mexico  
Energy, Minerals & Natural Resources Department  
OIL CONSERVATION DIVISION  
1220 South St. Francis Dr.  
Santa Fe, NM 87505

Form C-102  
Revised August 1, 2011  
Submit one copy to appropriate  
District Office  
☐ AMENDED REPORT

WELL LOCATION AND ACREAGE DEDICATION PLAT

<sup>1</sup> API Number 30-025-41954	<sup>2</sup> Pool Code 40470	<sup>3</sup> Pool Name LOVINGTON ABO
<sup>4</sup> Property Code 40160	<sup>5</sup> Property Name OPL 3 STATE	<sup>6</sup> Well Number 2
<sup>7</sup> OGRID No. 113315	<sup>8</sup> Operator Name TEXLAND PETROLEUM, LP	<sup>9</sup> Elevation 3869

<sup>10</sup> Surface Location

UL or lot no.	Section	Township	Range	Lot Idn	Feet from the	North/South line	Feet from the	East/West line	County
L	3	T-17-S	R-36-E		1650'	SOUTH	990'	WEST	LEA

<sup>11</sup> Bottom Hole Location If Different From Surface

UL or lot no.	Section	Township	Range	Lot Idn	Feet from the	North/South line	Feet from the	East/West line	County

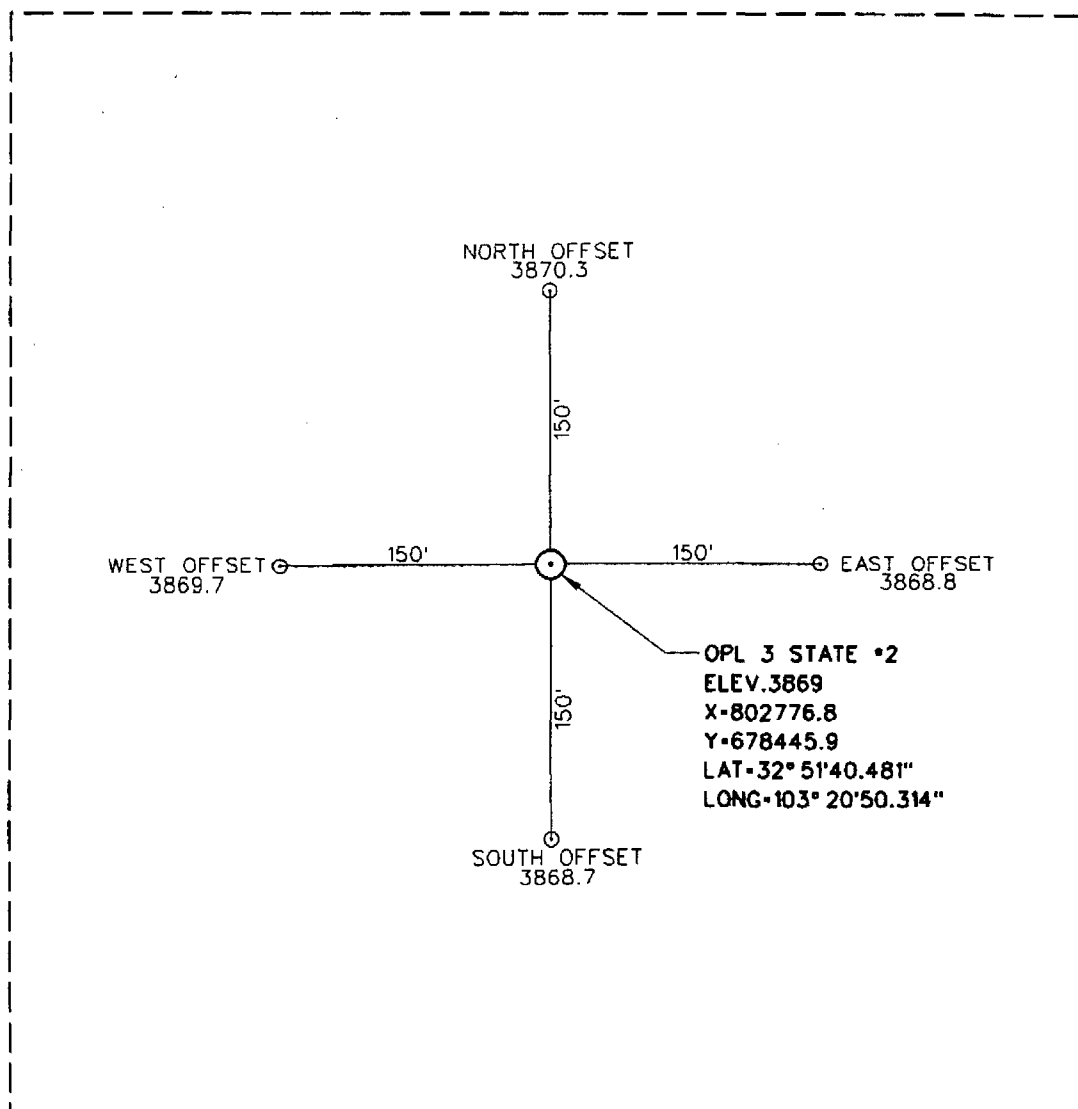
<sup>12</sup> Dedicated Acres 40	<sup>13</sup> Joint or Infill	<sup>14</sup> Consolidation Code	<sup>15</sup> Order No.
-------------------------------------	-------------------------------	----------------------------------	-------------------------

No allowable will be assigned to this completion until all interests have been consolidated or a non-standard unit has been approved by the division.

	<p>SECTION 3</p> <p>OPL 3 STATE No. 2 ELEV. 3869 X-802776.8 Y-678445.9 LAT-32° 51' 40.48" LONG-103° 20' 50.314"</p>	<p><sup>17</sup> OPERATOR CERTIFICATION</p> <p>I hereby certify that the information contained herein is true and complete to the best of my knowledge and belief, and that this organization either owns a working interest or unleased mineral interest in the land including the proposed bottom hole location or has a right to drill this well at this location pursuant to a contract with an owner of such a mineral or working interest, or to a voluntary pooling agreement or a compulsory pooling order heretofore entered by the division.</p> <p><u>Vickie Smith</u> 7/10/14 Signature Date</p> <p><u>Vickie Smith</u> Printed Name</p> <p><u>vsmithe@petro.com</u> E-mail Address</p>
		<p><sup>18</sup> SURVEYOR CERTIFICATION</p> <p>I hereby certify that the well location shown on this plat was plotted from field notes of actual surveys made by me or under my supervision, and that the same is true and correct to the best of my belief.</p> <p>Date of Survey <u>7/10/14</u></p> <p>Signature and Seal of Professional Surveyor:  </p> <p><u>Jesse M. Martin</u> Certificate Number 7911 FB*477 PG. 20-22</p>
		<p>SURVEY DATUM: HORIZONTAL-NAD 27 NEW MEXICO EAST VERTICAL-NGVD 29</p>

JUL 14 2014

SECTION 3, TOWNSHIP 17 SOUTH, RANGE 36 EAST, N.M.P.M.  
LEA COUNTY, NEW MEXICO



**DIRECTIONS TO LOCATION**  
FROM THE CENTER OF LOVINGTON, NEW MEXICO  
TRAVEL SOUTH ALONG STATE HWY. 483 APPROX.  
6.0 MILES. TURN RIGHT ON CO. RD. 78 AND GO  
WEST APPROX. 0.3 MILES, LOCATION IS 330' NORTH.

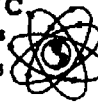
OPL 3 STATE #2  
LOCATED 1650 FEET FROM THE SOUTH LINE  
AND 990 FEET FROM THE WEST LINE OF  
SECTION 3, TOWNSHIP 17 SOUTH, RANGE  
36 EAST, N.M.P.M.,  
LEA COUNTY, NEW MEXICO

SCALE: 1" = 100'	REVISION:	PLAT DATE: 7-3-14
CLIENT: TEXLAND PETROLEUM, LP		
DRAWN BY: B. BURROW	SURVEY DATE: 7-2-14	
SURVEYED BY: J.M. MARTIN	FIELD BOOK: 477, PG. 20-22	
FILE: section3.dgn	FILE NO. 37,811A	SHEET NO. 1

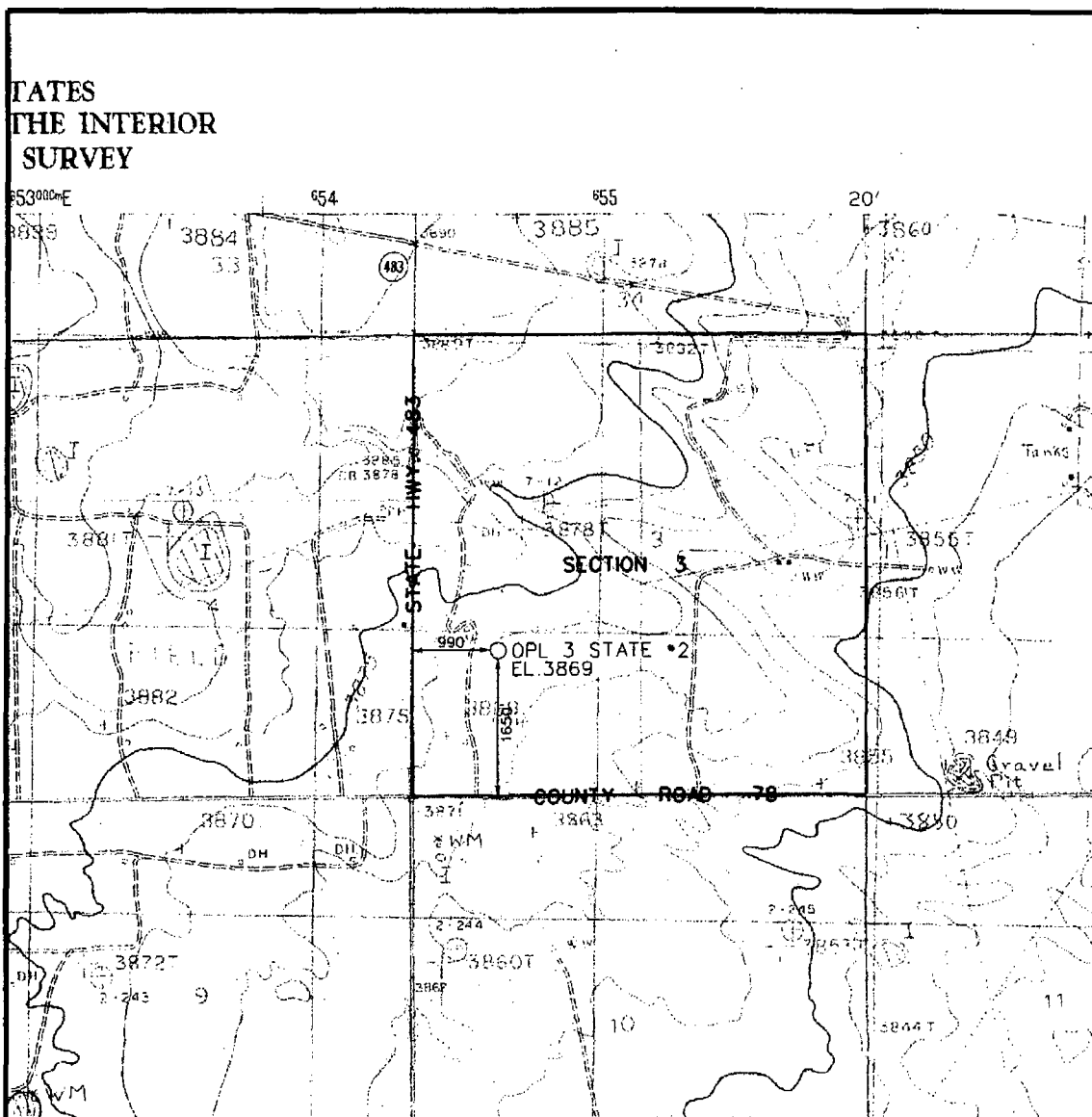


**WILSON SURVEYING Co., INC**  
Registered Professional Land Surveyors

3330 - 70th Street, Suite 201 • Lubbock, Texas 79413  
Office 806.792.4731 Fax 806.792.1646



# LOCATION VERIFICATION MAP



Operator: TEXLAND PETROLEUM, L.P. Lease: OPL 3 STATE \*2

Description 1650 FEET FROM THE SOUTH LINE AND 990 FEET FROM THE WEST LINE.

Section	Township	Range	Survey	County
3	17-S	36-E	N.M.P.M.	LEA



**WILSON SURVEYING Co., INC.**

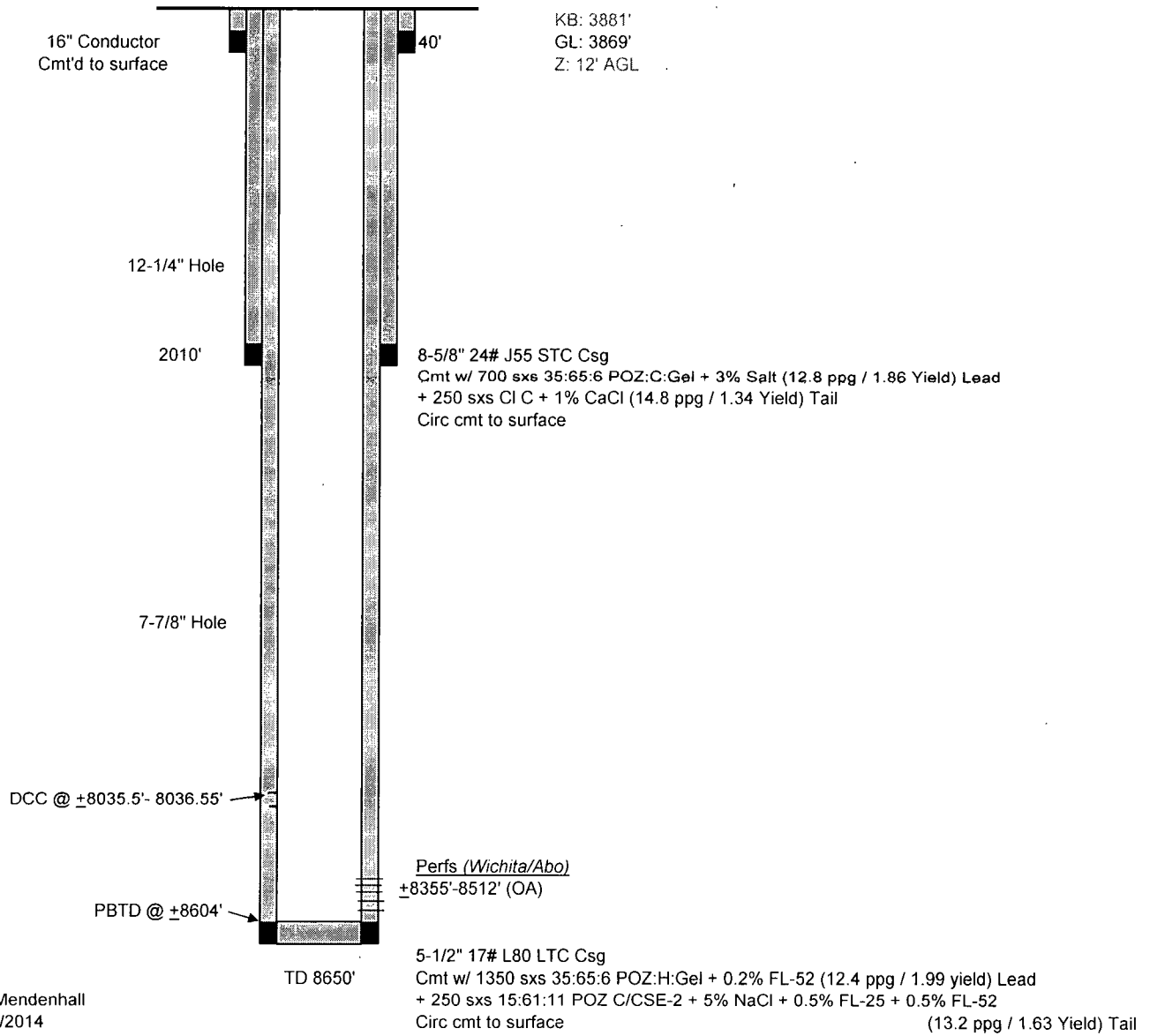
Registered Professional Land Surveyors  
Global Positioning System Surveyors

3330 70th ST., SUITE 201 • LUBBOCK, TX. 79413  
(806) 792-4731 • FAX (806) 792-1646

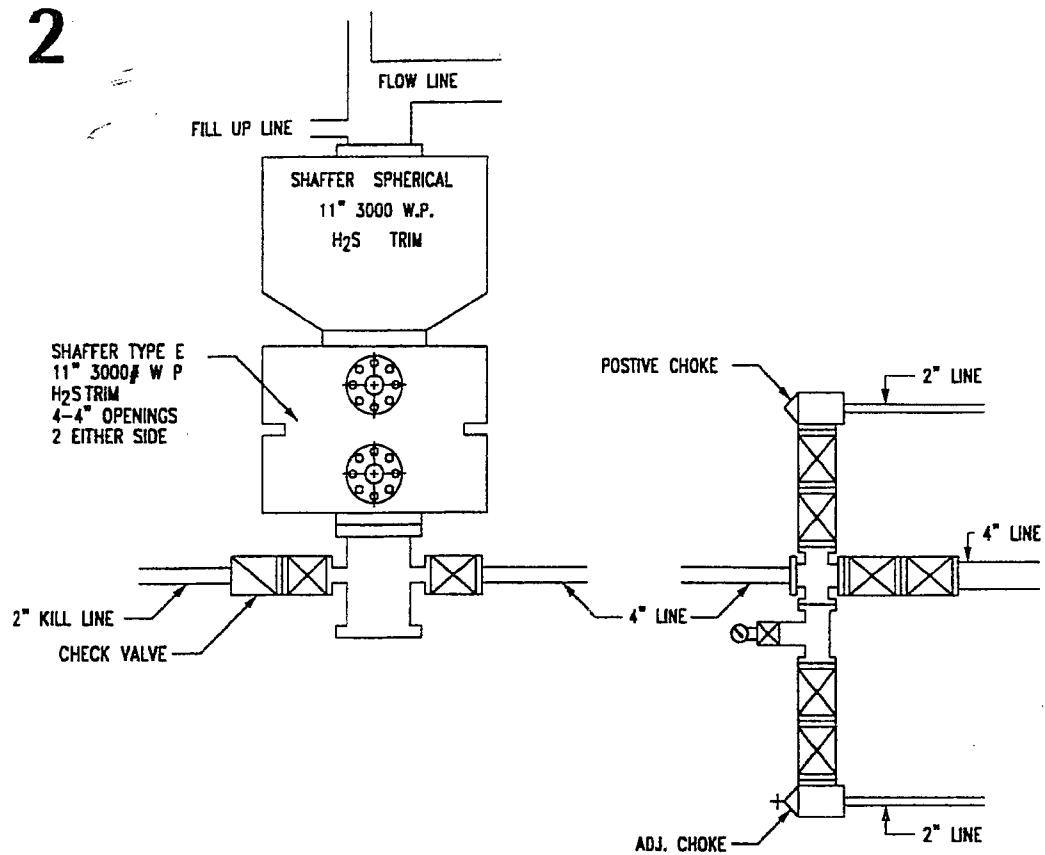


## OPL 3 State #2

### Proposed Wellbore Schematic

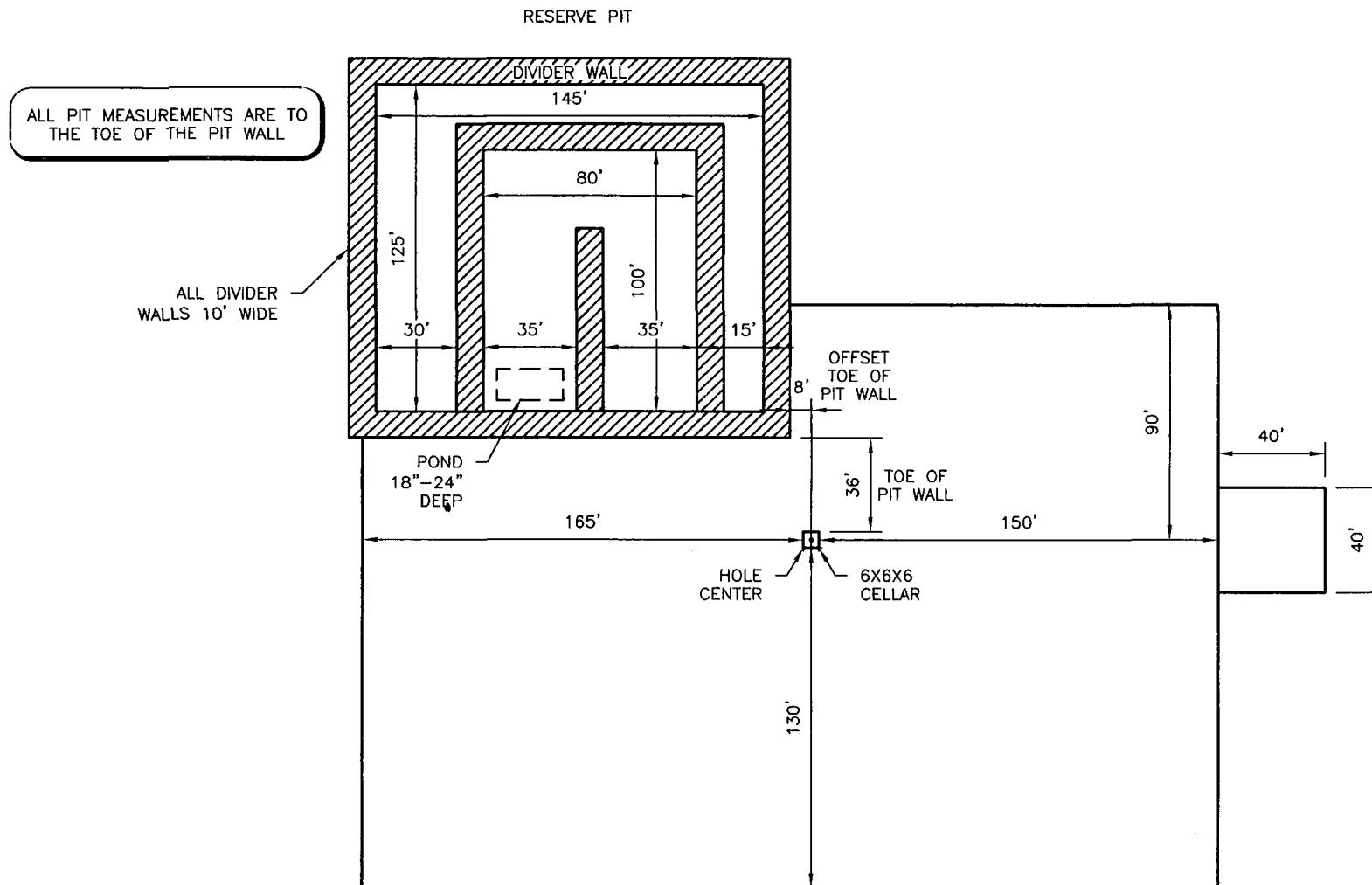
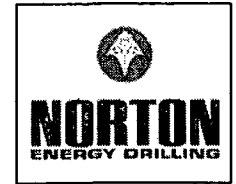


# RIG 2





## RIG #2 LOCATION FLAT



# CLOSED-LOOP SYSTEM DESIGN AND CONSTRUCTION

