

District I
1625 N. French Dr., Hobbs, NM 88240
Phone: (575) 393-6161 Fax: (575) 393-0720
District II
811 S. First St., Artesia, NM 88210
Phone: (575) 748-1283 Fax: (575) 748-9720
District III
1000 Rio Brazos Road, Aztec, NM 87410
Phone: (505) 334-6178 Fax: (505) 334-6170
District IV
1220 S. St. Francis Dr., Santa Fe, NM 87505
Phone: (505) 476-3460 Fax: (505) 476-3462

State of New Mexico
Energy, Minerals & Natural Resources Department
OIL CONSERVATION DIVISION
1220 South St. Francis Dr.
Santa Fe, NM 87505

Form C-102
Revised August 1, 2011
Submit one copy to appropriate
District Office
☐ AMENDED REPORT

WELL LOCATION AND ACREAGE DEDICATION PLAT

¹ API Number 30-025-41955	² Pool Code 40470	³ Pool Name LOVINGTON, ABO
⁴ Property Code 40160	⁵ Property Name OPL 3 STATE	
⁷ OGRID No. 113315	⁸ Operator Name TEXLAND PETROLEUM, LP	⁶ Well Number 3
		⁹ Elevation 3863

¹⁰ Surface Location

UL or lot no.	Section	Township	Range	Lot Idn	Feet from the	North/South line	Feet from the	East/West line	County
H	3	T-17-S	R-36-E		2150'	NORTH	505'	EAST	LEA

¹¹ Bottom Hole Location If Different From Surface

UL or lot no.	Section	Township	Range	Lot Idn	Feet from the	North/South line	Feet from the	East/West line	County

¹² Dedicated Acres 40	¹³ Joint or Infill	¹⁴ Consolidation Code	¹⁵ Order No.
-------------------------------------	-------------------------------	----------------------------------	-------------------------

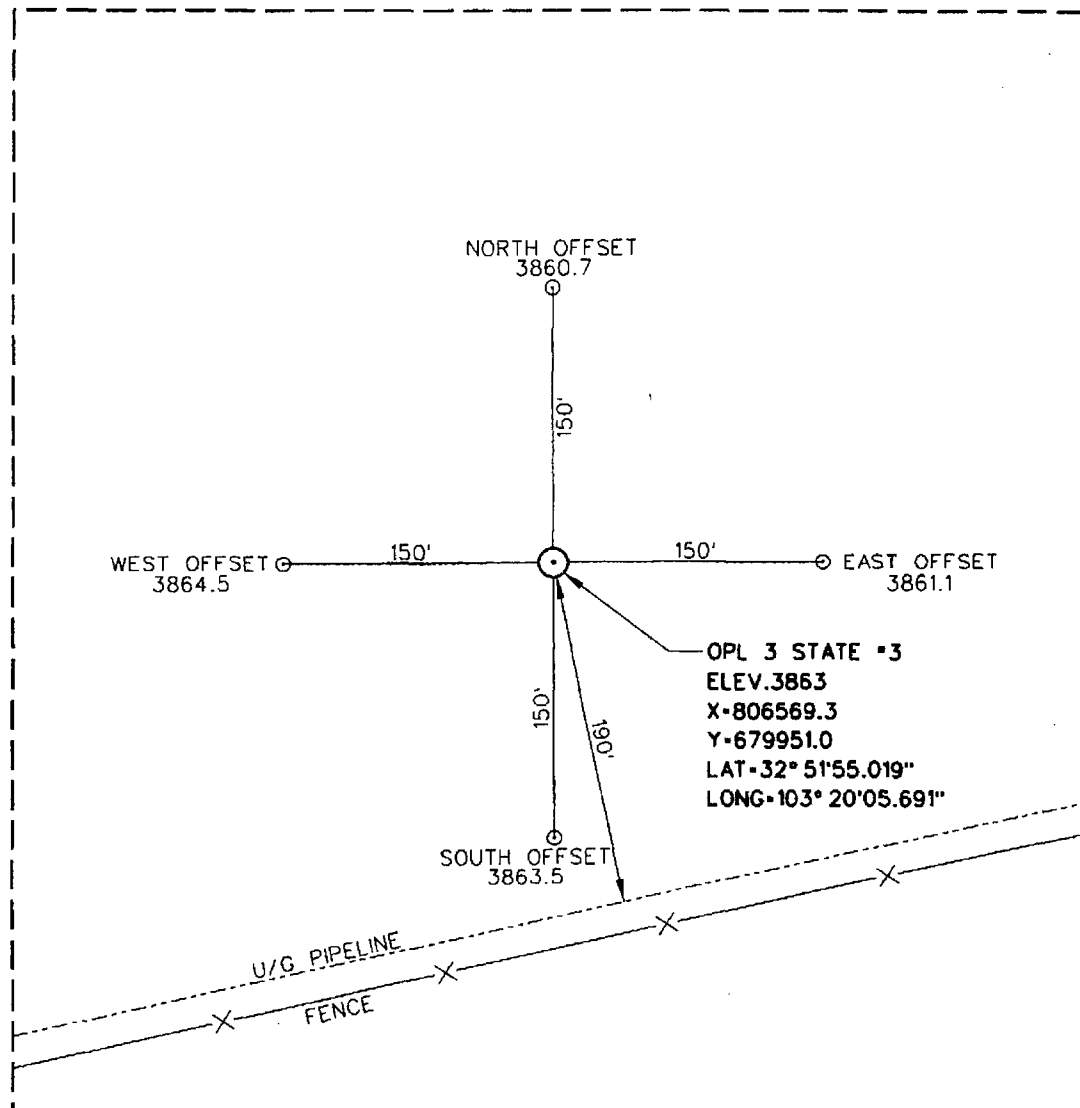
No allowable will be assigned to this completion until all interests have been consolidated or a non-standard unit has been approved by the division.

<p>SECTION 3</p> <p>OPL 3 STATE ELEV-3863 X-806569.3 Y-679951.0 LAT-32° 51' 55.019" LONG-103° 20' 05.691"</p> <p>CP 3 STATE No.2 EL.3858</p> <p>Texland, et al No.3</p> <p>2150'</p> <p>505'</p> <p>805'</p>	<p>¹⁷ OPERATOR CERTIFICATION I hereby certify that the information contained herein is true and complete to the best of my knowledge and belief, and that this organization either owns a working interest or unleased mineral interest in the land including the proposed bottom hole location or has a right to drill this well at this location pursuant to a contract with an owner of such a mineral or working interest, or to a voluntary pooling agreement or a compulsory pooling order heretofore entered by the division.</p> <p>Vickie Smith 7/10/14 Signature Date</p> <p>Vickie Smith Printed Name</p> <p>vsmith@texpetro.com E-mail Address</p>
	<p>¹⁸ SURVEYOR CERTIFICATION I hereby certify that the well location shown on this plat was plotted from field notes of actual surveys made by me or under my supervision, and that the same is true and correct to the best of my belief.</p>
	<p>Date of Survey July 30, 2014</p> <p>Signature and Seal of Professional Surveyor Jesse M. Martin 7911 JUL 14 2014 Certificate Number 7911 FB-477 PG.20-22 37,811B</p>

SURVEY DATUM:
HORIZONTAL-NAD27 NEW MEXICO EAST
VERTICAL-NGVD29

JUL 14 2014

SECTION 3, TOWNSHIP 17 SOUTH, RANGE 36 EAST, N.M.P.M.
LEA COUNTY, NEW MEXICO



DIRECTIONS TO LOCATION
FROM THE CENTER OF LOVINGTON, NEW MEXICO
TRAVEL SOUTH ALONG STATE HWY. 483 APPROX.
6.0 MILES. TURN LEFT ON CO. RD. 78 AND GO
EAST APPROX. 0.63 MILES. TURN LEFT ON LEASE
ROAD AND GO NORTH 0.5 MILES AND THEN
GO NORTHEAST 0.30 MILES. LOCATION ON LEFT.

OPL 3 STATE #3
LOCATED 2150 FEET FROM THE NORTH LINE
AND 505 FEET FROM THE EAST LINE OF
SECTION 3, TOWNSHIP 17 SOUTH, RANGE
36 EAST, N.M.P.M.,
LEA COUNTY, NEW MEXICO

SCALE: 1" = 100'	REVISION:	PLAT DATE: 7-3-14
CLIENT: TEXLAND PETROLEUM, LP		
DRAWN BY: B. BURROW	SURVEY DATE: 7-3-14	
SURVEYED BY: J.M. MARTIN	FIELD BOOK: 477, PG. 20-22	
FILE: section3.dgn	FILE NO. 37,811B	SHEET NO. 1

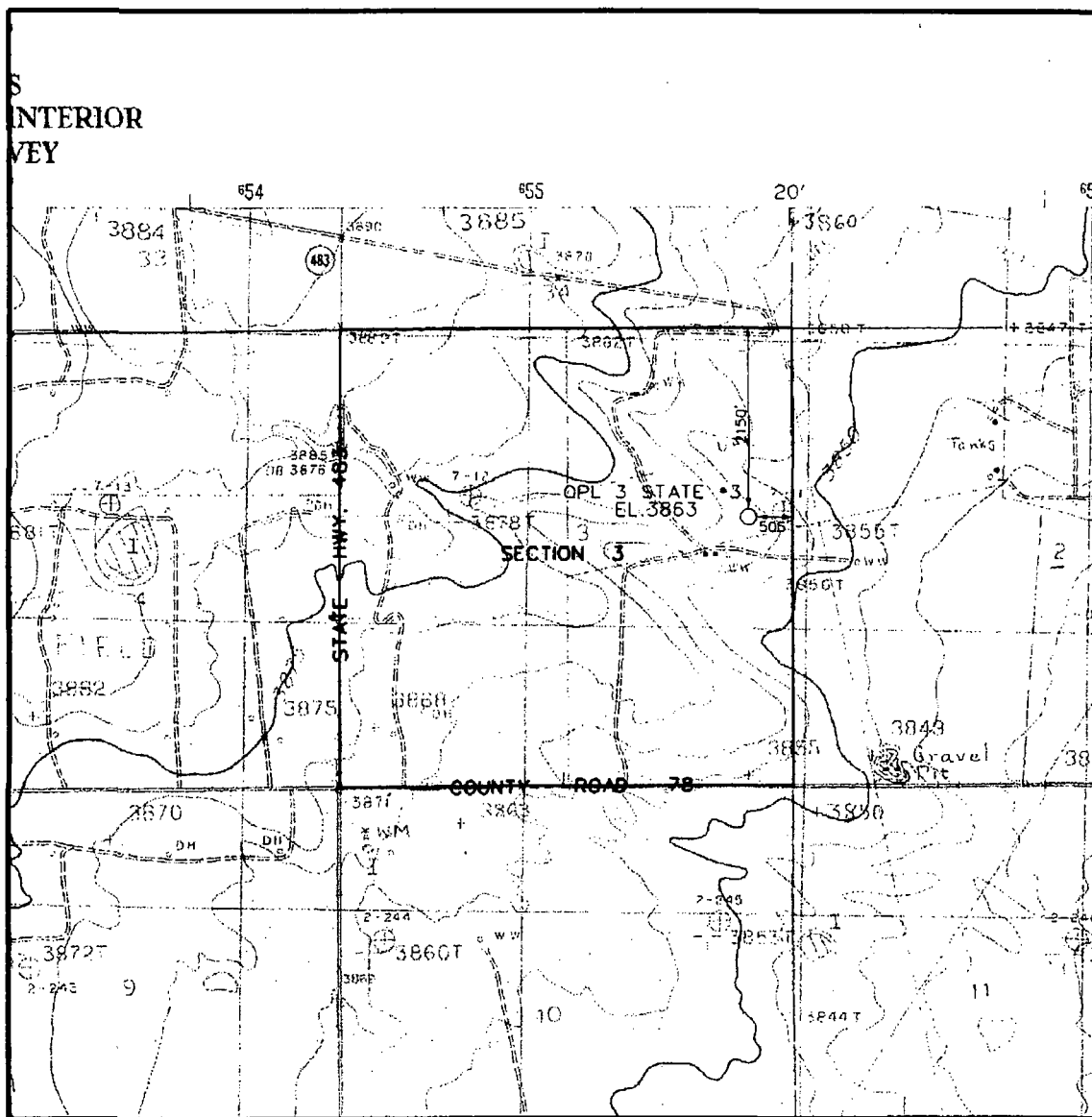


WILSON SURVEYING Co., INC.
Registered Professional Land Surveyors

3330 - 70th Street, Suite 201 • Lubbock, Texas 79413
Office 806.792.4731 Fax 806.792.1646



LOCATION VERIFICATION MAP



Operator: TEXLAND PETROLEUM, L.P. Lease: OPL 3 STATE 3

Description: 2150 FEET FROM THE NORTH LINE AND 505 FEET FROM THE EAST LINE

Section	Township	Range	Survey	County
3	17-S	36-E	N.M.P.M.	LEA



WILSON SURVEYING Co., INC.

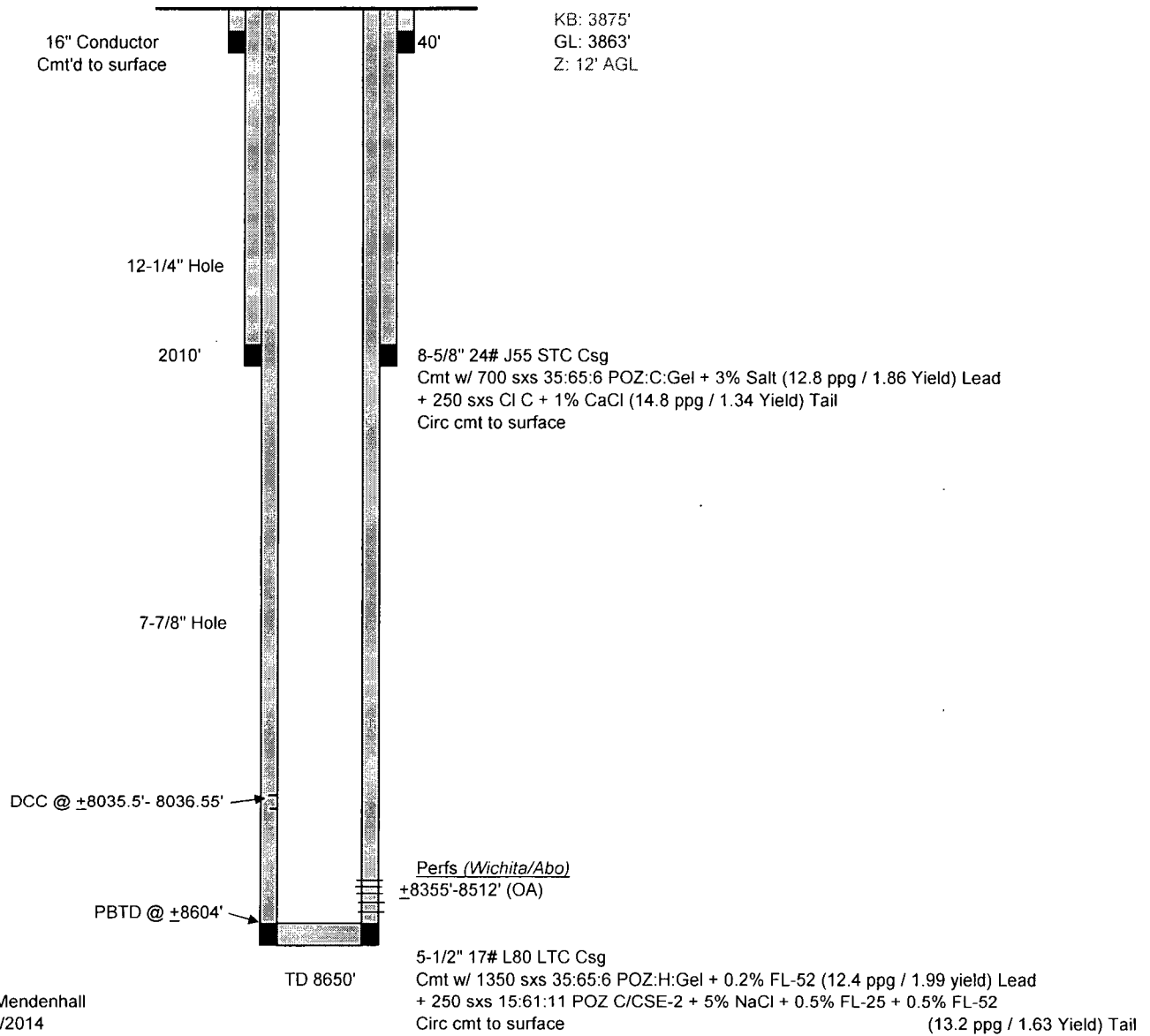
Registered Professional Land Surveyors
Global Positioning System Surveyors

3330 70th ST., SUITE 201 • LUBBOCK, TX. 79413
(806) 792-4731 • FAX (806) 792-1646

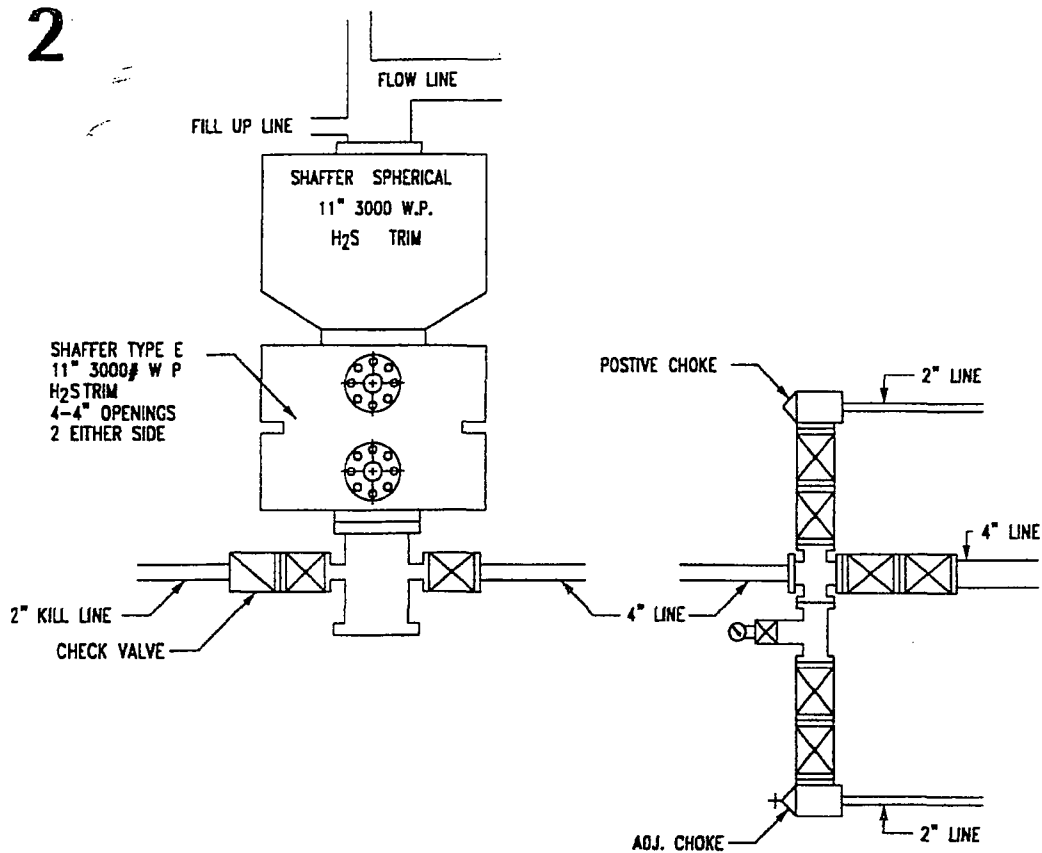


OPL 3 State #3

Proposed Wellbore Schematic



RIG 2



CLOSED-LOOP SYSTEM DESIGN AND CONSTRUCTION

