

District I  
1625 N. French Dr., Hobbs, NM 88240  
Phone: (575) 393-6161 Fax: (575) 393-0720  
District II  
811 S. First St., Artesia, NM 88210  
Phone: (575) 748-1283 Fax: (575) 748-9720  
District III  
1000 Rio Brazos Road, Aztec, NM 87410  
Phone: (505) 334-6178 Fax: (505) 334-6170  
District IV  
1220 S. St. Francis Dr., Santa Fe, NM 87505  
Phone: (505) 476-3460 Fax: (505) 476-3462

State of New Mexico  
Energy, Minerals & Natural Resources Department  
**HOBBS OIL CONSERVATION DIVISION**  
1220 South St. Francis Dr.  
Santa Fe, NM 87505

Form C-102  
Revised August 1, 2011  
Submit one copy to appropriate  
District Office  
☐ AMENDED REPORT

**RECEIVED**  
**WELL LOCATION AND ACREAGE DEDICATION PLAT**

<sup>1</sup> API Number 30-025-	<sup>2</sup> Pool Code 40470	<sup>3</sup> Pool Name LOVINGTON Larchita, ABO
<sup>4</sup> Property Code #373482	<sup>5</sup> Property Name XTO 9 STATE	
<sup>7</sup> OGRJD No. 113315	<sup>6</sup> Operator Name TEXLAND PETROLEUM, LP	<sup>8</sup> Well Number 1
		<sup>9</sup> Elevation 3870

<sup>10</sup> Surface Location									
UL or lot no. B	Section 9	Township T-17-S	Range R-36-E	Lot Idn	Feet from the 150'	North/South line NORTH	Feet from the 2310'	East/West line EAST	County LEA

<sup>11</sup> Bottom Hole Location If Different From Surface									
UL or lot no.	Section	Township	Range	Lot Idn	Feet from the	North/South line	Feet from the	East/West line	County
<sup>12</sup> Dedicated Acres 40 <sup>13</sup> Joint or Infill <sup>14</sup> Consolidation Code <sup>15</sup> Order No.									

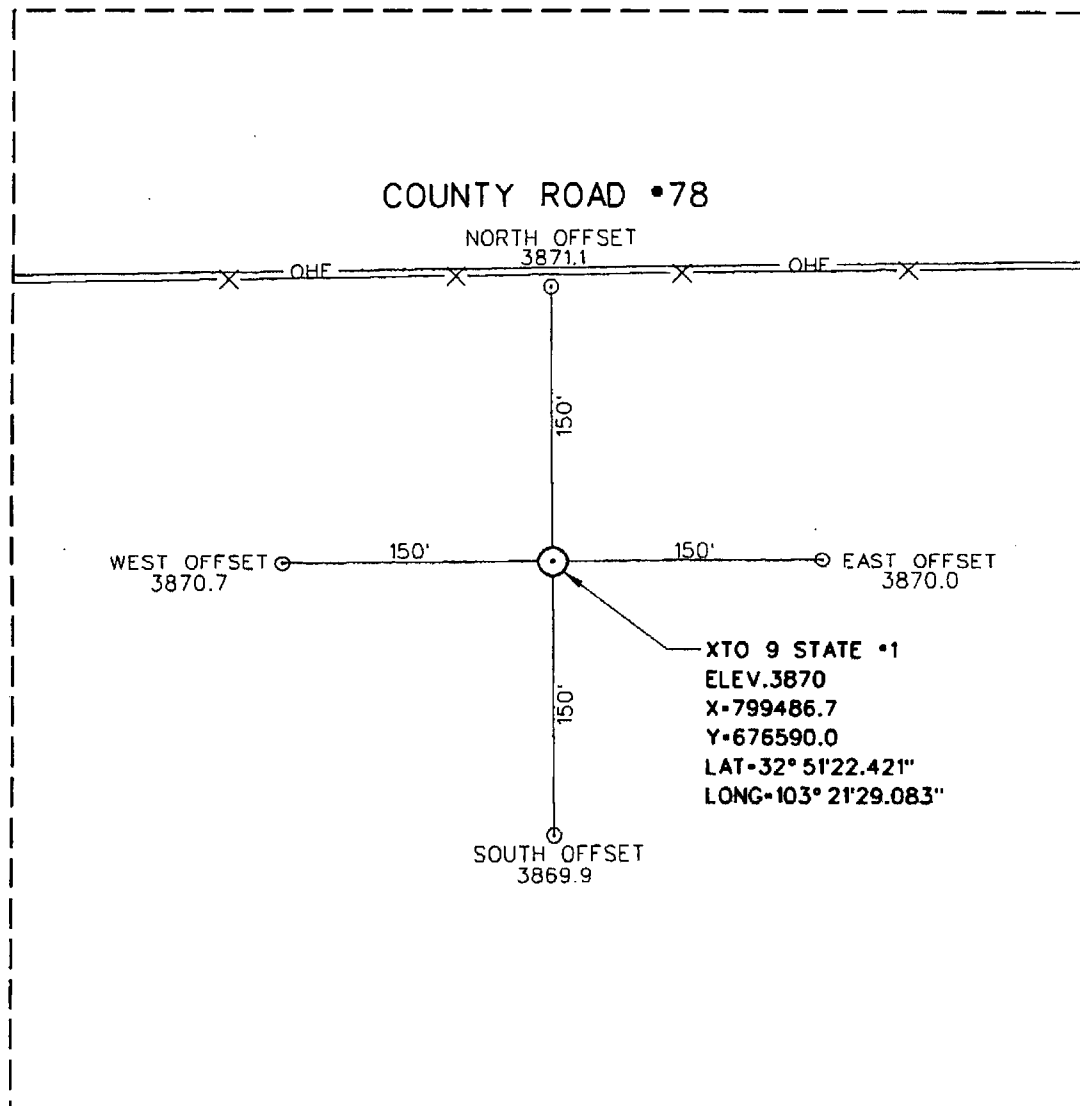
No allowable will be assigned to this completion until all interests have been consolidated or a non-standard unit has been approved by the division.

XTO 9 STATE No.1 ELEV-3870 X-799486.7 Y-676590.0 LAT-32° 51'22.421" LONG-103° 21'29.083"		YP 9 STATE No.1 EL.3870	<sup>17</sup> OPERATOR CERTIFICATION I hereby certify that the information contained herein is true and complete to the best of my knowledge and belief, and that this organization either owns a working interest or unleased mineral interest in the land including the proposed bottom hole location or has a right to drill this well at this location pursuant to a contract with an owner of such a mineral or working interest, or to a voluntary pooling agreement or a compulsory pooling order heretofore entered by the division.
			Signature: <u>Vickie Smith 7/15/14</u> Date: Printed Name: <u>Vickie Smith</u> E-mail Address: <u>usmith@terpetro.com</u>
SECTION 9			<sup>18</sup> SURVEYOR CERTIFICATION I hereby certify that the well location shown on this plat was plotted from field notes of actual surveys made by me or under my supervision, and that the same is true and correct to the best of my belief.
			Date of Survey: <u>7/15/14</u> Signature and Seal of Professional Surveyor: Certificate Number 7011 PG-477 PG.20-22

SURVEY DATUM:  
HORIZONTAL-NAD27 NEW MEXICO EAST  
VERTICAL-NGVD29

JUL 15 2014

SECTION 9, TOWNSHIP 17 SOUTH, RANGE 36 EAST, N.M.P.M.  
LEA COUNTY, NEW MEXICO



**DIRECTIONS TO LOCATION**  
FROM THE CENTER OF LOVINGTON, NEW MEXICO  
TRAVEL SOUTH ALONG STATE HWY. 483 APPROX.  
6.0 MILES. TURN RIGHT ON CO. RD. 78 AND GO  
WEST APPROX. 0.44 MILES, LOCATION IS 150' SOUTH.

XTO 9 STATE #1  
LOCATED 150 FEET FROM THE NORTH LINE  
AND 2310 FEET FROM THE EAST LINE OF  
SECTION 9, TOWNSHIP 17 SOUTH, RANGE  
36 EAST, N.M.P.M.,  
LEA COUNTY, NEW MEXICO

SCALE: 1" = 100'	REVISION:	PLAT DATE: 7-3-14
CLIENT: TEXLAND PETROLEUM, LP		
DRAWN BY: B. BURROW	SURVEY DATE: 7-3-14	
SURVEYED BY: J.M. MARTIN	FIELD BOOK: 477, PG. 20-22	
FILE: section3.dgn	FILE NO. 37,810	SHEET NO. 1

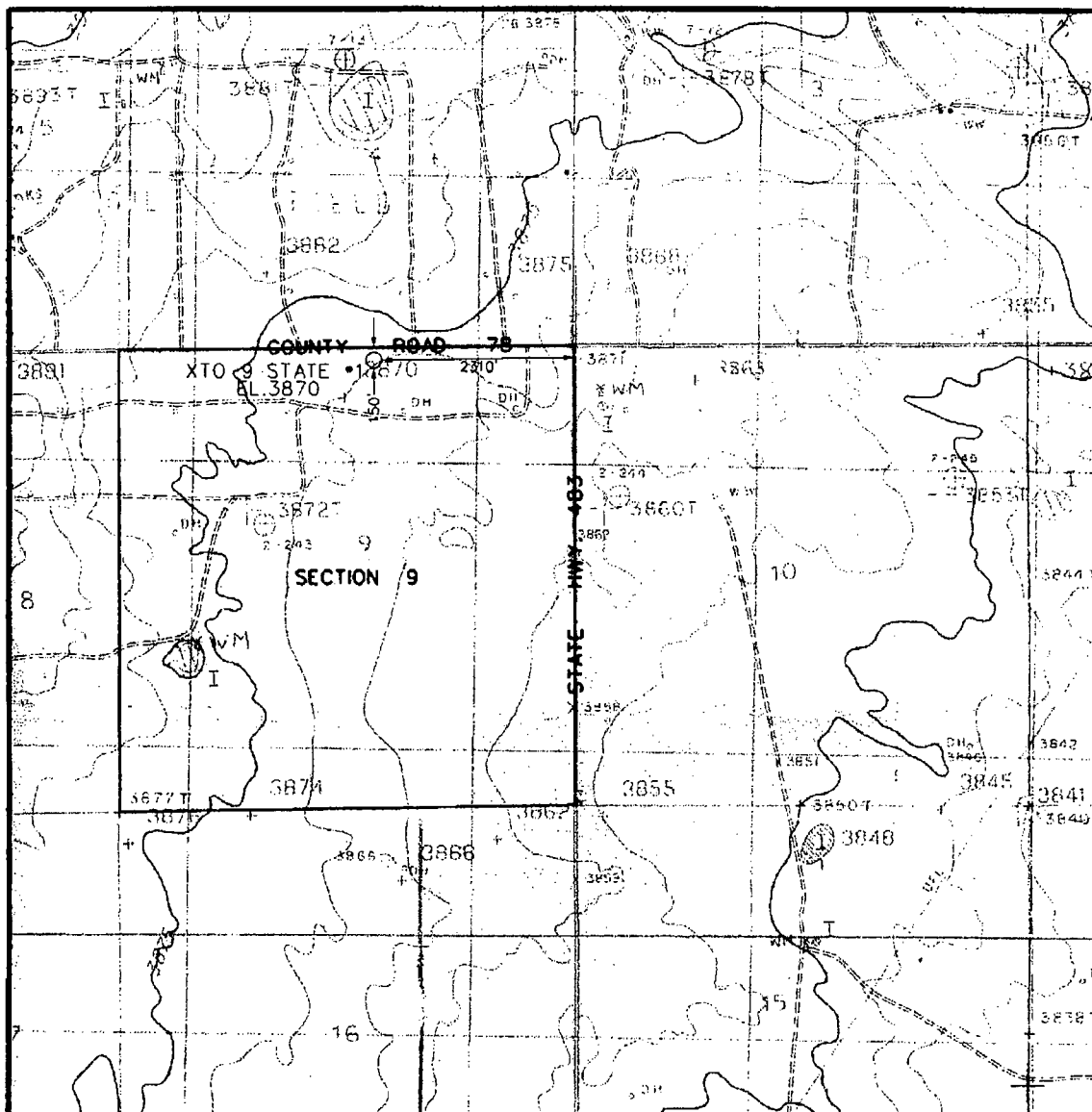


**WILSON SURVEYING Co., INC.**  
Registered Professional Land Surveyors

3330 • 70th Street, Suite 201 • Lubbock, Texas 79413  
Office 806.792.4731 Fax 806.792.1646



# LOCATION VERIFICATION MAP



1" = 2000'

Operator: TEXLAND PETROLEUM, L.P. Lease: XTO 9 STATE #1

Description 150 FEET FROM THE NORTH LINE AND 2310 FEET FROM THE EAST LINE

Section	Township	Range	Survey	County
9	17-S	36-E	N.M.P.M.	LEA

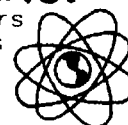


**WILSON SURVEYING Co., INC.**

Registered Professional Land Surveyors  
Global Positioning System Surveyors

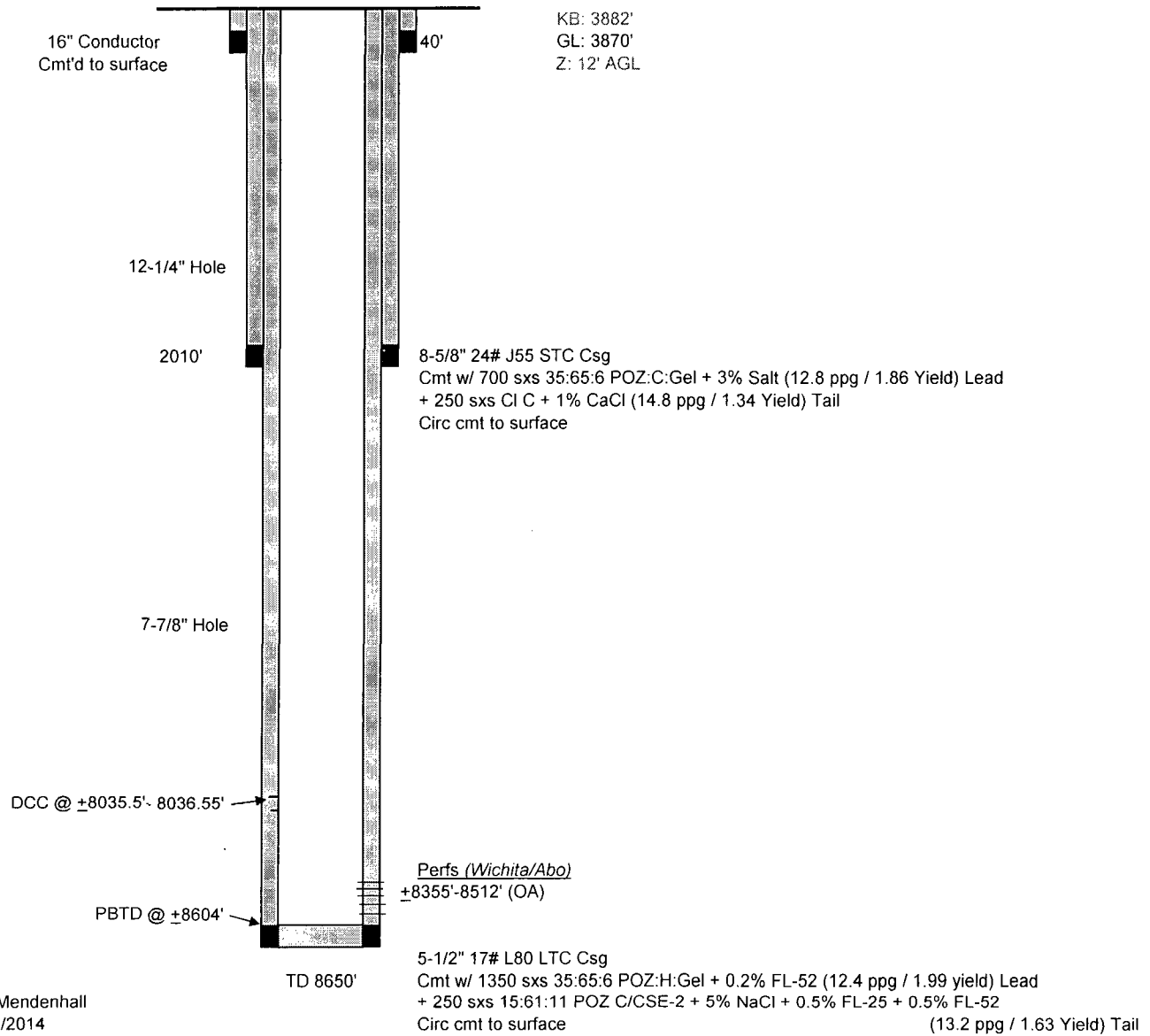
3330 70th ST., SUITE 201 • LUBBOCK, TX. 79413

(806) 792-4731 • FAX (806) 792-1646

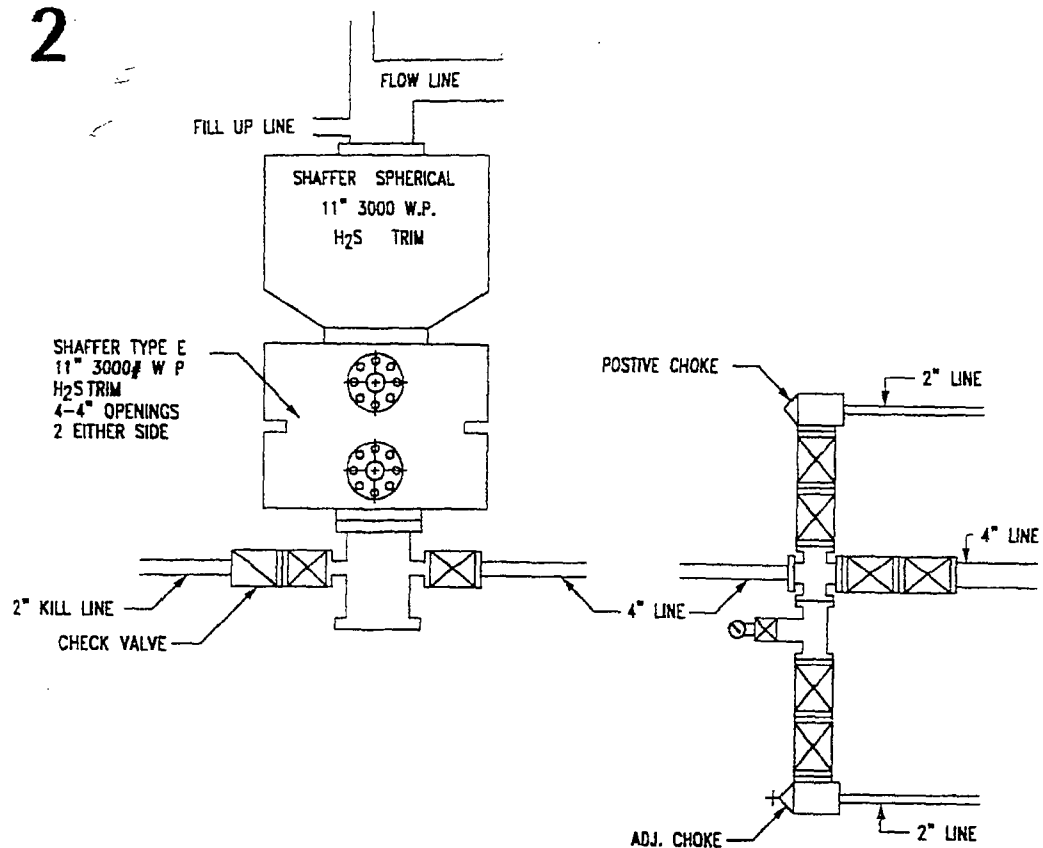


# XTO 9 State #1

## Proposed Wellbore Schematic

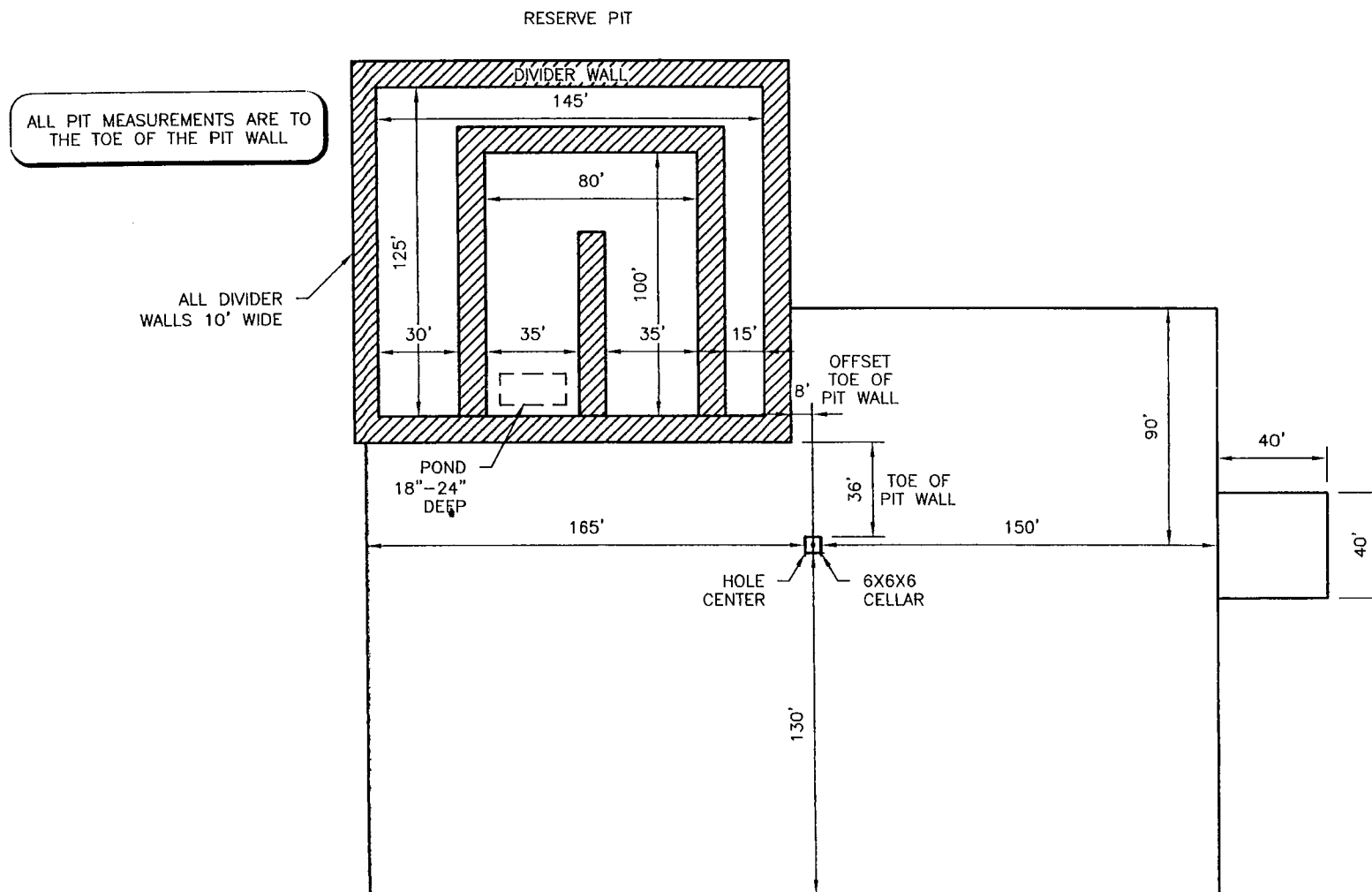
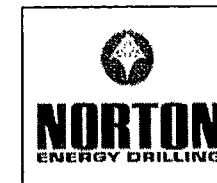


# RIG 2





## RIG #2 LOCATION FLAT



# CLOSED-LOOP SYSTEM DESIGN AND CONSTRUCTION

