

District I  
1625 N. French Dr., Hobbs, NM 88240  
Phone: (575) 393-6161 Fax: (575) 393-0720  
District II  
811 S. First St., Artesia, NM 88210  
Phone: (575) 748-1283 Fax: (575) 748-9720  
District III  
1000 Rio Brazos Road, Aztec, NM 87414  
Phone: (505) 334-6178 Fax: (505) 334-6170  
District IV  
1220 S. St. Francis Dr., Santa Fe, NM 87505  
Phone: (505) 476-3460 Fax: (505) 476-3462

**HOBBS OCB**

**JUL 14 2014**

**RECEIVED**

State of New Mexico

Energy, Minerals & Natural Resources Department

OIL CONSERVATION DIVISION

1220 South St. Francis Dr.

Santa Fe, NM 87505

Form C-102

Revised August 1, 2011

Submit one copy to appropriate

District Office

☒ AMENDED REPORT

**WELL LOCATION AND ACREAGE DEDICATION PLAT**

<sup>1</sup> API Number <b>30-029-41962</b>	<sup>2</sup> Pool Code <b>59900</b>	<sup>3</sup> Pond Name <b>TRIPLE X; BONE SPRING</b>
<sup>4</sup> Property Code <b>313483</b>	<sup>5</sup> Property Name <b>COACHWHIP 26 FEDERAL</b>	
<sup>6</sup> Well Number <b>2H</b>	<sup>7</sup> Operator Name <b>DEVON ENERGY PRODUCTION COMPANY, L.P.</b>	
<sup>8</sup> OGRID No. <b>6137</b>	<sup>9</sup> Elevation <b>3653.1</b>	

**10 Surface Location**

UL or lot no.	Section	Township	Range	Lot Idn	Feet from the	North/South line	Feet from the	East/West line	County
<b>O</b>	<b>26</b>	<b>23 S</b>	<b>33 E</b>		<b>215</b>	<b>SOUTH</b>	<b>1550</b>	<b>EAST</b>	<b>LEA</b>

**11 Bottom Hole Location If Different From Surface**

UL or lot no.	Section	Township	Range	Lot Idn	Feet from the	North/South line	Feet from the	East/West line	County
<b>B</b>	<b>26</b>	<b>23 S</b>	<b>33 E</b>		<b>330</b>	<b>NORTH</b>	<b>1980</b>	<b>EAST</b>	<b>LEA</b>

<sup>12</sup> Dedicated Acres	<sup>13</sup> Joint or Infill	<sup>14</sup> Consolidation Code	<sup>15</sup> Order No.
<b>160</b>			

No allowable will be assigned to this completion until all interests have been consolidated or a non-standard unit has been approved by the division.

<p>N89°43'11"E 2636.06 FT</p> <p>NW CORNER SEC. 26 LAT. = 32.2829270°N LONG. = 103.5516698°W NMSP EAST (FT) N = 467541.76 E = 782900.10</p>		<p>N4 CORNER SEC. 26 LAT. = 32.2829094°N LONG. = 103.5431421°W NMSP EAST (FT) N = 467554.65 E = 785535.61</p>		<p>N89°42'20"E 2637.92 FT</p> <p>BOTTOM OF HOLE LAT. = 32.2819938°N LONG. = 103.5410110°W NMSP EAST (FT) N = 467226.43 E = 786196.65</p>		<p>NE CORNER SEC. 26 LAT. = 32.2828929°N LONG. = 103.5346083°W NMSP EAST (FT) N = 467568.20 E = 788172.97</p>	
<p>W/4 CORNER SEC. 26 LAT. = 32.2757053°N LONG. = 103.5516694°W NMSP EAST (FT) N = 464914.49 E = 782919.36</p>		<p>NOTE: LATITUDE AND LONGITUDE COORDINATES ARE SHOWN USING THE NORTH AMERICAN DATUM OF 1983 (NAD83). LISTED NEW MEXICO STATE PLANE EAST COORDINATES ARE GRID (NAD83). BASIS OF BEARING AND DISTANCES USED ARE NEW MEXICO STATE PLANE EAST COORDINATES MODIFIED TO THE SURFACE.</p>		<p>E/4 CORNER SEC. 26 LAT. = 32.2756427°N LONG. = 103.5346048°W NMSP EAST (FT) N = 464930.59 E = 788193.68</p>			
<p>SW CORNER SEC. 26 LAT. = 32.2684152°N LONG. = 103.5516675°W NMSP EAST (FT) N = 462262.38 E = 782939.28</p>		<p>COACHWHIP "26" FEDERAL #2H ELEV. = 3653.1 LAT. = 32.2689634°N (NAD83) LONG. = 103.5396104°W NMSP EAST (FT) N = 462489.19 E = 786664.57</p>		<p>SE CORNER SEC. 26 LAT. = 32.2683544°N LONG. = 103.5345961°W NMSP EAST (FT) N = 462279.13 E = 788216.11</p>			
<p>S89°49'05"W 2638.95 FT</p>		<p>SURFACE LOCATION S/4 CORNER SEC. 26 SCALED</p>		<p>S89°49'05"W 2638.95 FT</p>			

**17 OPERATOR CERTIFICATION**

I hereby certify that the information contained herein is true and complete to the best of my knowledge and belief, and that this organization either owns a working interest or unleased mineral interest in the land including the proposed bottom hole location or has a right to drill this well at this location pursuant to a contract with an owner of such a mineral or working interest, or to a voluntary pooling agreement or a compulsory pooling order heretofore entered by the division.

*[Signature]* 4/14/2014  
Signature Date

David H. Cook Regulatory Specialist  
Printed Name

david.cook@dvn.com  
E-mail Address

**18 SURVEYOR CERTIFICATION**

I hereby certify that the well location shown on this plat was plotted from field notes of actual surveys made by me or under my supervision, and that the same is true and correct to the best of my belief.

NOVEMBER 26, 2013  
Date of Survey

*[Signature]*  
Signature and Seal of Professional Surveyor

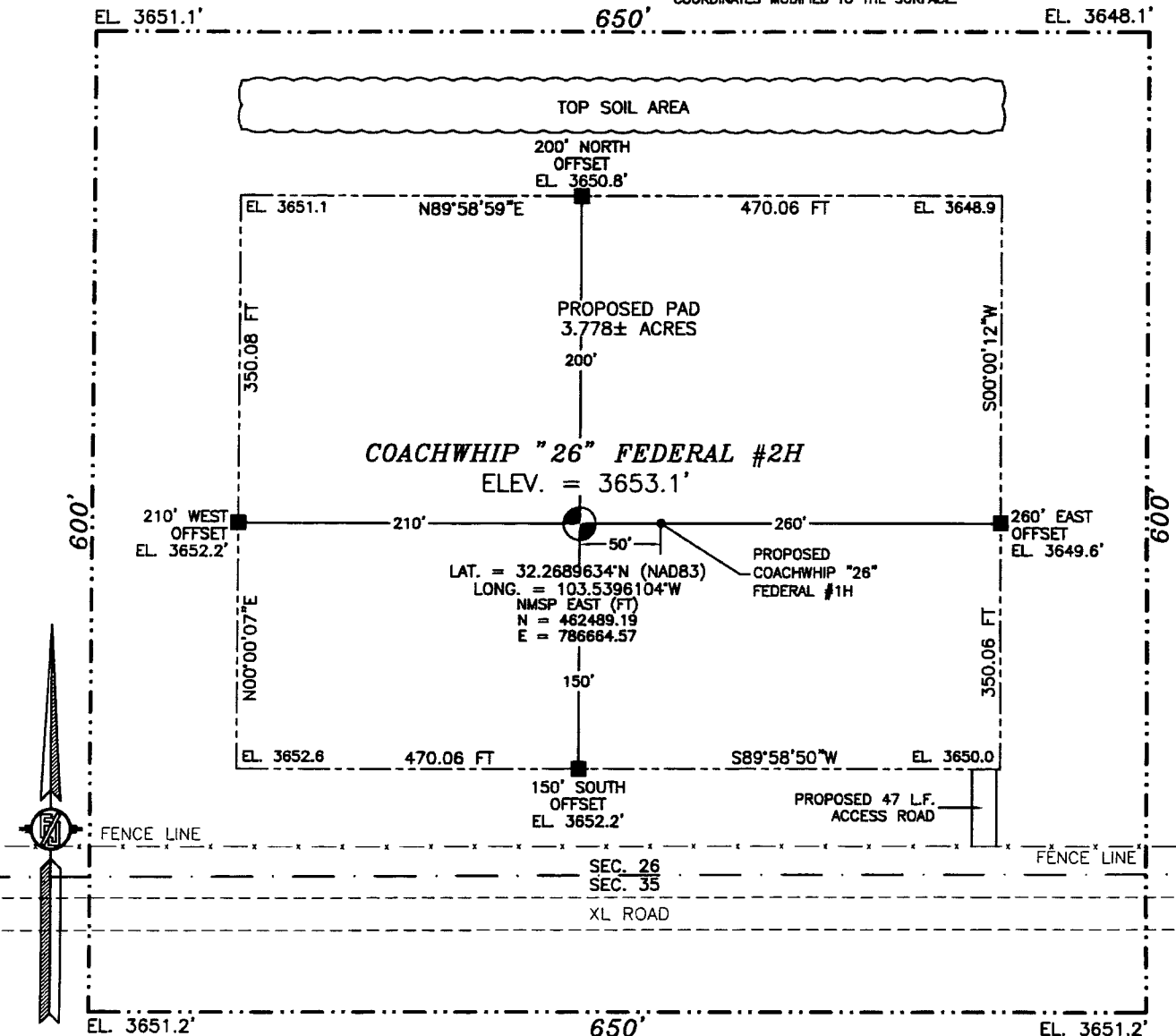
Certificate Number 12797  
PHILIP E. JARAMILLO, PLS 12797  
SURVEY NO. 2298B

PP: 215 FSL & 1550 FEL

**JUL 15 2014**

**SECTION 26, TOWNSHIP 23 SOUTH, RANGE 33 EAST, N.M.P.M.  
LEA COUNTY, STATE OF NEW MEXICO  
SITE MAP**

NOTE: LATITUDE AND LONGITUDE COORDINATES ARE SHOWN USING THE NORTH AMERICAN DATUM OF 1983 (NAD83). LISTED NEW MEXICO STATE PLANE EAST COORDINATES ARE GRID (NAD83). BASIS OF BEARING AND DISTANCES USED ARE NEW MEXICO STATE PLANE EAST COORDINATES MODIFIED TO THE SURFACE.



010 50 100 200  
SCALE 1" = 100'

**DIRECTIONS TO LOCATION**

FROM THE INTERSECTION OF STATE HWY #128 AND DELAWARE BASIN ROAD GO NORTH ON DELAWARE BASIN ROAD APPROX. 3.9 MILES TO XL ROAD ON LEFT (WEST) TURN WEST ON XL ROAD GO APPROX. 1.6 MILES ON RIGHT (NORTH) OF XL ROAD APPROX. 200 FEET IS LOCATION

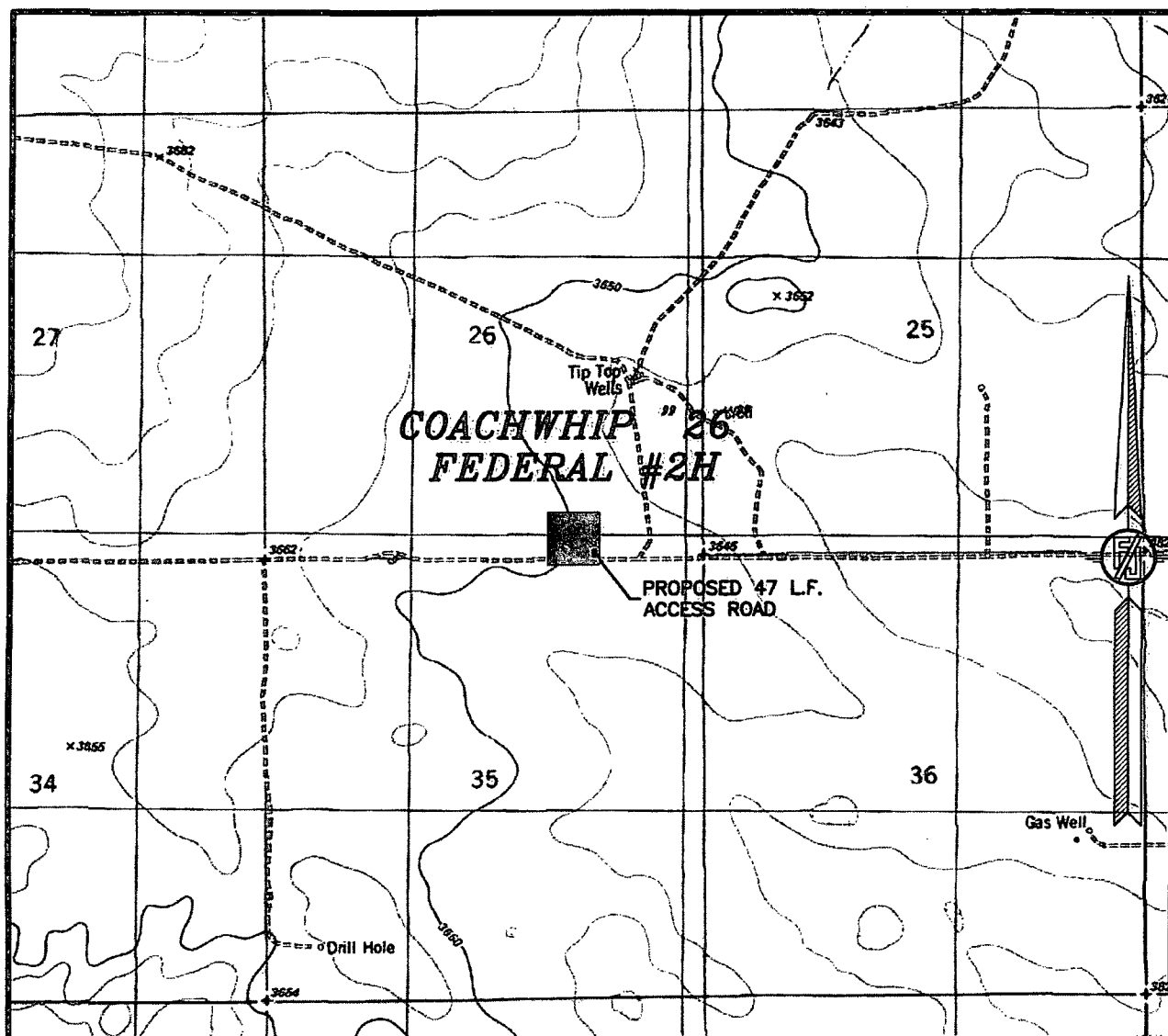
**DEVON ENERGY PRODUCTION COMPANY, L.P.  
COACHWHIP "26" FEDERAL #2H  
LOCATED 215 FT. FROM THE SOUTH LINE  
AND 1550 FT. FROM THE EAST LINE OF  
SECTION 26, TOWNSHIP 23 SOUTH,  
RANGE 33 EAST, N.M.P.M.  
LEA COUNTY, STATE OF NEW MEXICO**

NOVEMBER 26, 2013

SURVEY NO. 2298B

**MADRON SURVEYING, INC.** 301 SOUTH CANAL (575) 234-3341 **CARLSBAD, NEW MEXICO**

SECTION 26, TOWNSHIP 23 SOUTH, RANGE 33 EAST, N.M.P.M.  
LEA COUNTY, STATE OF NEW MEXICO  
LOCATION VERIFICATION MAP



USGS QUAD MAP:  
TIP TOP WELLS

NOT TO SCALE

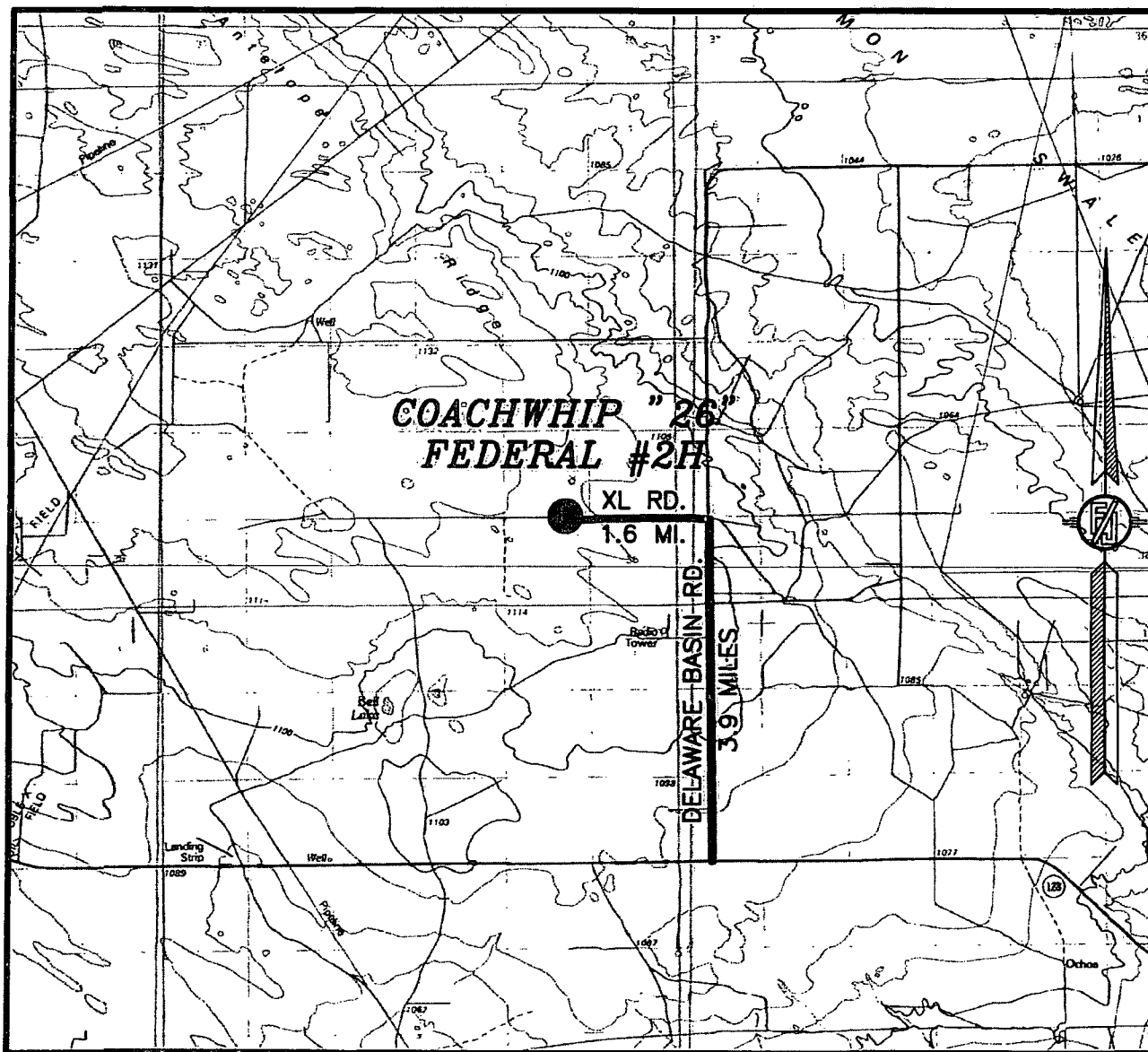
DEVON ENERGY PRODUCTION COMPANY, L.P.  
**COACHWHIP "26" FEDERAL #2H**  
LOCATED 215 FT. FROM THE SOUTH LINE  
AND 1550 FT. FROM THE EAST LINE OF  
SECTION 26, TOWNSHIP 23 SOUTH,  
RANGE 33 EAST, N.M.P.M.  
LEA COUNTY, STATE OF NEW MEXICO

NOVEMBER 26, 2013

SURVEY NO. 2298B

MADRON SURVEYING, INC. 301 SOUTH CANAL (575) 234-3341 CARLSBAD, NEW MEXICO

SECTION 26, TOWNSHIP 23 SOUTH, RANGE 33 EAST, N.M.P.M.  
LEA COUNTY, STATE OF NEW MEXICO  
VICINITY MAP



NOT TO SCALE

**DIRECTIONS TO LOCATION**

FROM THE INTERSECTION OF STATE HWY #128 AND DELAWARE BASIN ROAD GO NORTH ON DELAWARE BASIN ROAD APPROX. 3.9 MILES TO XL ROAD ON LEFT (WEST) TURN WEST ON XL ROAD GO APPROX. 1.6 MILES ON RIGHT (NORTH) OF XL ROAD APPROX. 200 FEET IS LOCATION

**DEVON ENERGY PRODUCTION COMPANY, L.P.**

**COACHWHIP "26" FEDERAL #2H**

LOCATED 215 FT. FROM THE SOUTH LINE  
AND 1550 FT. FROM THE EAST LINE OF  
SECTION 26, TOWNSHIP 23 SOUTH,  
RANGE 33 EAST, N.M.P.M.  
LEA COUNTY, STATE OF NEW MEXICO

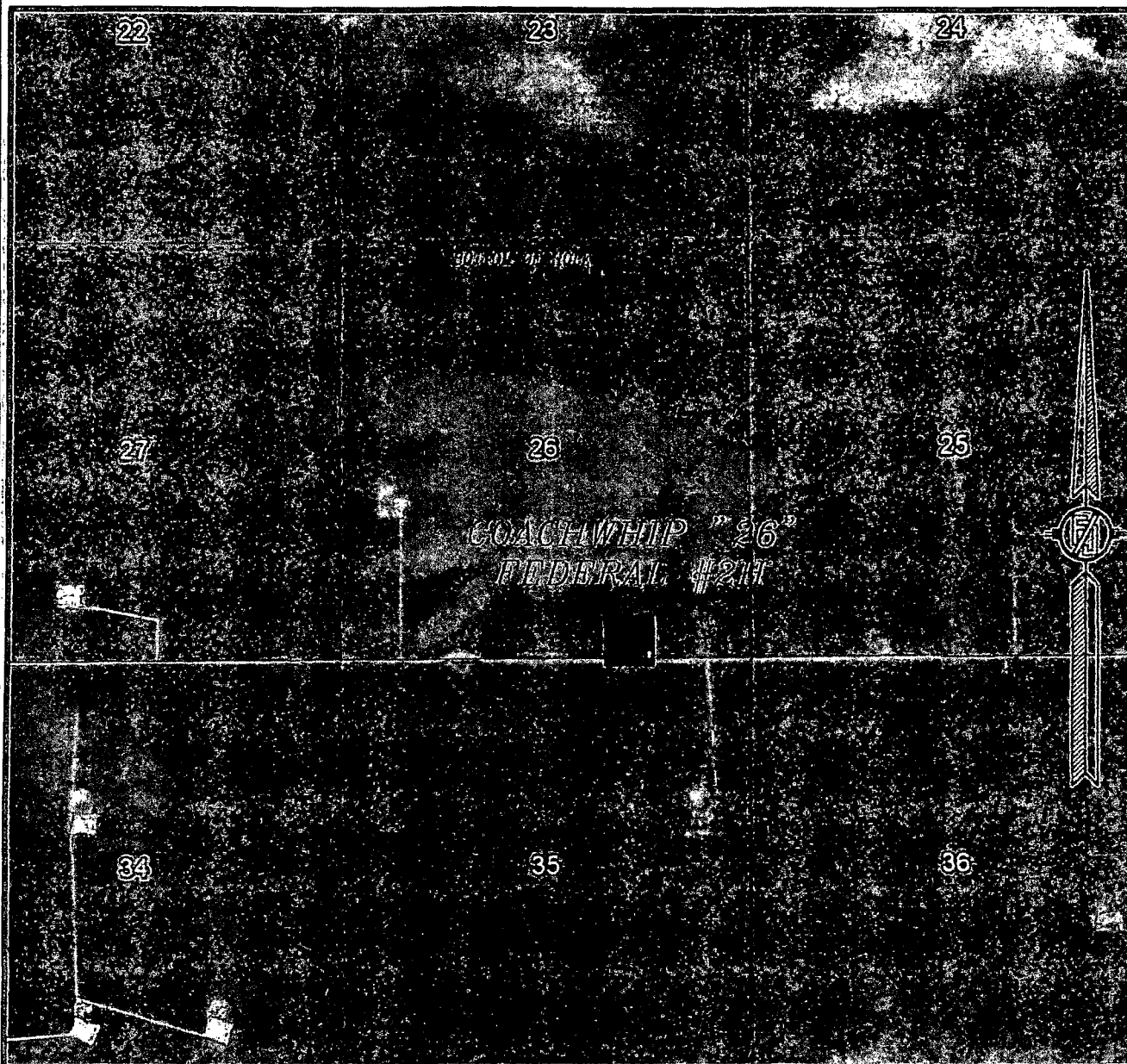
NOVEMBER 26, 2013

**MADRON SURVEYING, INC.**

301 SOUTH CANAL  
(575) 234-3341

SURVEY NO. 2298B  
**CARLSBAD, NEW MEXICO**

SECTION 26, TOWNSHIP 23 SOUTH, RANGE 33 EAST, N.M.P.M.  
LEA COUNTY, STATE OF NEW MEXICO  
AERIAL PHOTO



NOT TO SCALE  
AERIAL PHOTO:  
GOOGLE EARTH  
MARCH 2012

DEVON ENERGY PRODUCTION COMPANY, L.P.  
COACHWHIP "26" FEDERAL #2H  
LOCATED 215 FT. FROM THE SOUTH LINE  
AND 1550 FT. FROM THE EAST LINE OF  
SECTION 26, TOWNSHIP 23 SOUTH,  
RANGE 33 EAST, N.M.P.M.  
LEA COUNTY, STATE OF NEW MEXICO

NOVEMBER 26, 2013

SURVEY NO. 2298B

MADRON SURVEYING, INC. 301 SOUTH CANAL (575) 234-3341 CARLSBAD, NEW MEXICO

Estimated distances to nearest wellbores:

\*From SHL: Bell Lake West 26 1H 3200 ft W  
 \*From BHL: Federal H 1 4980 ft SW

23S 33E

THISTLE UNIT 20H

27

THISTLE UNIT 10

23

24

BHL

1 MILE

26

25

FEDERAL "H" 1

MID BELL LAKE UNIT 1

MARY FED

WILLIAMSON

BELL LAKE WEST 26 1H

COACHWHIP 26 FED 2H

1 MILE

SHL

devon

Coachwhip 26 Fed 2H

1 Mile Radius Map

0 1,932  
FEET

WELL SYMBOLS  
 DRY AND ABANDONED WELL  
 DRY HOLE WITH SHOW OF O&G  
 DRY HOLE WITH OIL SHOW  
 GAS PRODUCING WELL  
 OIL PRODUCING WELL  
 PROPOSED

October 7, 2013

THISTLE UNIT 6

STATE 35 1

TOPHAT AJQ 1

36

35

BELL LAKE