

District I  
1625 N. French Dr., Hobbs, NM 88240  
Phone: (575) 393-6161 Fax: (575) 393-9720  
District II  
811 S. First St., Artesia, NM 88210  
Phone: (575) 748-1283 Fax: (575) 748-9720  
District III  
1000 Rio Brazos Road, Aztec, NM 87410  
Phone: (505) 334-6178 Fax: (505) 334-6170  
District IV  
1220 S. St. Francis Dr., Santa Fe, NM 87505  
Phone: (505) 476-3460 Fax: (505) 476-3462

State of New Mexico  
Energy, Minerals & Natural Resources Department  
OIL CONSERVATION DIVISION  
1220 South St. Francis Dr.  
Santa Fe, NM 87505

HOBBS OCD

Form C-102  
Revised August 1, 2011  
Submit one copy to appropriate  
District Office

JUL 16 2014

☐ AMENDED REPORT

RECEIVED

WELL LOCATION AND ACREAGE DEDICATION PLAT

<sup>1</sup> API Number <b>30-025-41975</b>	<sup>2</sup> Pool Code <b>5150</b>	<sup>3</sup> Pool Name <b>BELL LAKE, BONE SPRING, NORTH</b>
<sup>4</sup> Property Code <b>313495</b>	<sup>5</sup> Property Name <b>HOGNOSE VIPER 23 FED</b>	
<sup>6</sup> OGRID No. <b>6137</b>	<sup>7</sup> Operator Name <b>DEVON ENERGY PRODUCTION COMPANY, L.P.</b>	
		<sup>8</sup> Well Number <b>1H</b>
		<sup>9</sup> Elevation <b>3682.2</b>

<sup>10</sup> Surface Location

UL or lot no.	Section	Township	Range	Lot Idn	Feet from the	North/South line	Feet from the	East/West line	County
<b>M</b>	<b>23</b>	<b>23 S</b>	<b>33 E</b>		<b>200</b>	<b>SOUTH</b>	<b>850</b>	<b>WEST</b>	<b>LEA</b>

<sup>11</sup> Bottom Hole Location If Different From Surface

UL or lot no.	Section	Township	Range	Lot Idn	Feet from the	North/South line	Feet from the	East/West line	County
<b>D</b>	<b>23</b>	<b>23 S</b>	<b>33 E</b>		<b>330</b>	<b>NORTH</b>	<b>660</b>	<b>WEST</b>	<b>LEA</b>

<sup>12</sup> Dedicated Acres	<sup>13</sup> Joint or Infill	<sup>14</sup> Consolidation Code	<sup>15</sup> Order No.
<b>160</b>			

No allowable will be assigned to this completion until all interests have been consolidated or a non-standard unit has been approved by the division.

<p>N89°48'55"E 2638.26 FT</p> <p>NW CORNER SEC. 23 LAT. = 32.2974530°N LONG. = 103.5516745°W</p> <p>NMSP EAST (FT) N = 472826.30 E = 782860.12</p> <p>660'</p> <p>330'</p> <p>BOTTOM OF HOLE</p> <p>BOTTOM OF HOLE LAT. = 32.2965387°N LONG. = 103.5495395°W</p> <p>NMSP EAST (FT) N = 472498.50 E = 783522.27</p> <p>W Q CORNER SEC. 23 LAT. = 32.2901991°N LONG. = 103.5516779°W</p> <p>NMSP EAST (FT) N = 470187.30 E = 782878.31</p> <p>HOGNOSE VIPER "23" FED #1H ELEV. = 3682.2' LAT. = 32.2834711°N (NAD83) LONG. = 103.5489204°W</p> <p>NMSP EAST (FT) N = 467745.91 E = 783748.35</p> <p>SURFACE LOCATION</p> <p>SW CORNER SEC. 23 LAT. = 32.2829270°N LONG. = 103.5516698°W</p> <p>NMSP EAST (FT) N = 467541.76 E = 782900.10</p> <p>S Q CORNER SEC. 23 LAT. = 32.2829093°N LONG. = 103.5431420°W</p> <p>NMSP EAST (FT) N = 467554.62 E = 785535.61</p> <p>SE CORNER SEC. 23 LAT. = 32.2828926°N LONG. = 103.5346083°W</p> <p>NMSP EAST (FT) N = 467568.09 E = 788172.96</p> <p>850'</p> <p>200'</p> <p>S89°43'14"W 2636.07 FT</p> <p>S89°42'27"W 2637.90 FT</p> <p>PP: 200 FNL &amp; 850 FWL</p>		<p>N89°46'55"E 2635.11 FT</p> <p>NE CORNER SEC. 23 LAT. = 32.2973972°N LONG. = 103.5346123°W</p> <p>NMSP EAST (FT) N = 472844.84 E = 788132.42</p> <p>500'26'25"E 2638.97 FT</p> <p>500'26'25"E 2638.97 FT</p> <p>500'26'25"E 2638.97 FT</p> <p>DNF</p>
---	--	---

**17 OPERATOR CERTIFICATION**

I hereby certify that the information contained herein is true and complete to the best of my knowledge and belief, and that this organization either owns a working interest or undivided mineral interest in the land including the proposed bottom hole location or has a right to drill this well at this location pursuant to a contract with an owner of such a mineral or working interest, or to a voluntary pooling agreement or a compulsory pooling order theretofore entered by the Division.

*D. R.* 2/25/2014

Signature Date

**David H. Cook** Regulatory Specialist

Printed Name

[david.cook@dvn.com](mailto:david.cook@dvn.com)

E-mail Address

**18 SURVEYOR CERTIFICATION**

I hereby certify that the well location shown on this plat was plotted from field notes of actual surveys made by me or under my supervision, and that the same is true and correct to the best of my belief.

DECEMBER 1, 2013

Date of Survey

*Armando F. Jaramillo*

Signature and Seal of Professional Surveyor

Certificate Number: **ARMON F. JARAMILLO, PLS 12797**

SURVEY NO. 2401

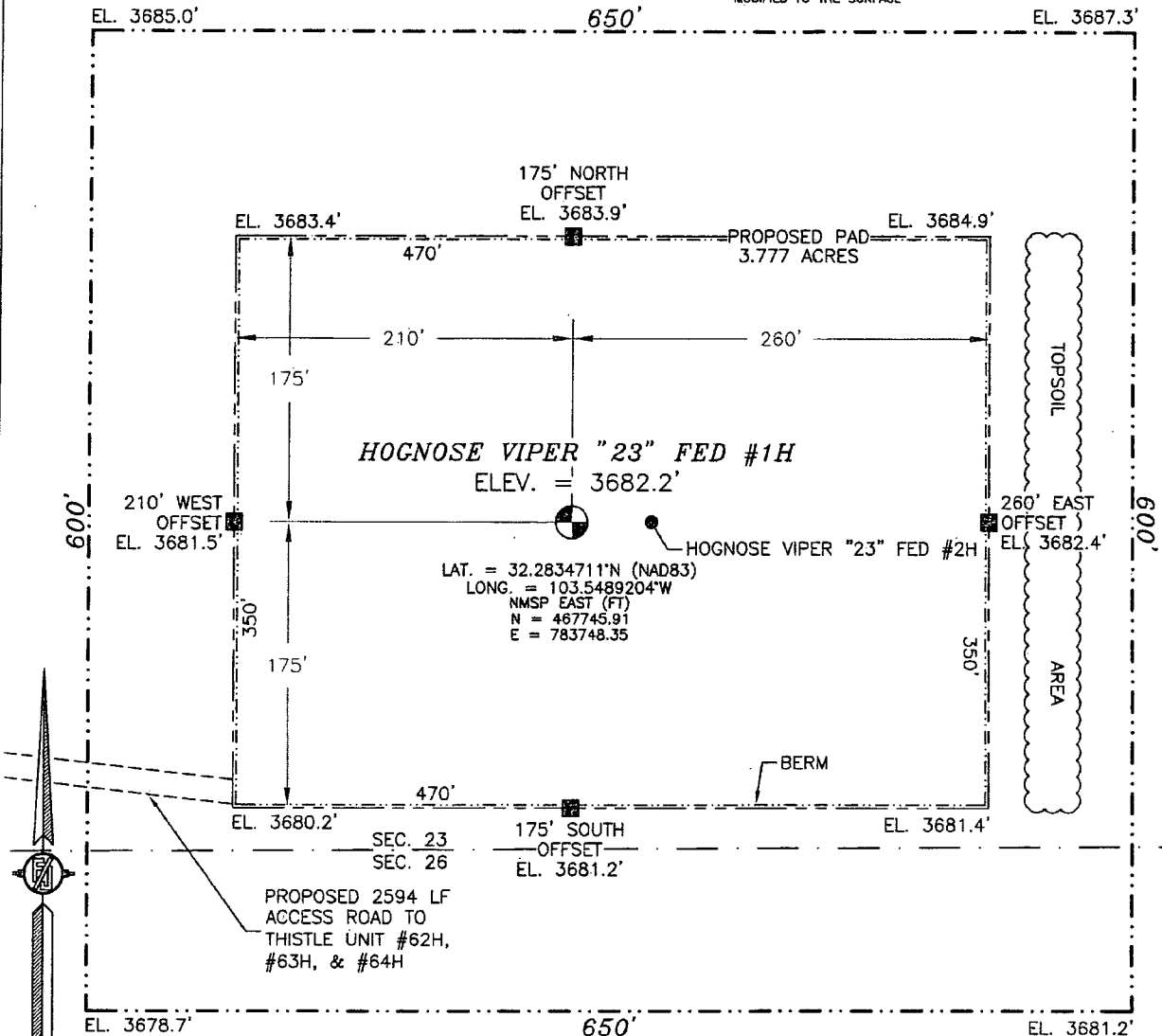
JUL 16 2014

PM.

SECTION 23, TOWNSHIP 23 SOUTH, RANGE 33 EAST, N.M.P.M.  
LEA COUNTY, STATE OF NEW MEXICO

SITE MAP

NOTE: LATITUDE AND LONGITUDE COORDINATES ARE SHOWN USING THE NORTH AMERICAN DATUM OF 1983 (NAD83). LISTED NEW MEXICO STATE PLANE EAST COORDINATES ARE GRID (NAD83). BASIS OF BEARING AND DISTANCES USED ARE NEW MEXICO STATE PLANE EAST COORDINATES MODIFIED TO THE SURFACE



010 50 100 200

SCALE 1" = 100'

DIRECTIONS TO LOCATION

FROM STATE HIGHWAY 128 AND CR 21 (DELAWARE BASIN) GO NORTH ON CR 21 4.0 MILES, TURN LEFT ON PAVED XL ROAD AND GO WEST 3.3 MILES, TURN RIGHT ON CALICHE ROAD AND GO NORTH 0.8 MILES, BEND LEFT AND GO NORTHWEST 0.12 MILES, TURN RIGHT AND GO NORTHEAST 0.25 MILES, BEND RIGHT AND GO EAST 0.45 MILES TO THISTLE UNIT #62H, #63H, & #64H PAD AND FROM SOUTHEAST PAD CORNER FOLLOW PROPOSED ROAD SURVEY FLAGS EAST 2594' TO THE SOUTHWEST CORNER OF PAD FOR THIS LOCATION.

DEVON ENERGY PRODUCTION COMPANY, L.P.

HOGNOSE VIPER "23" FED #1H

LOCATED 200 FT. FROM THE SOUTH LINE

AND 850 FT. FROM THE WEST LINE OF

SECTION 23, TOWNSHIP 23 SOUTH,

RANGE 33 EAST, N.M.P.M.

LEA COUNTY, STATE OF NEW MEXICO

DECEMBER 3, 2013

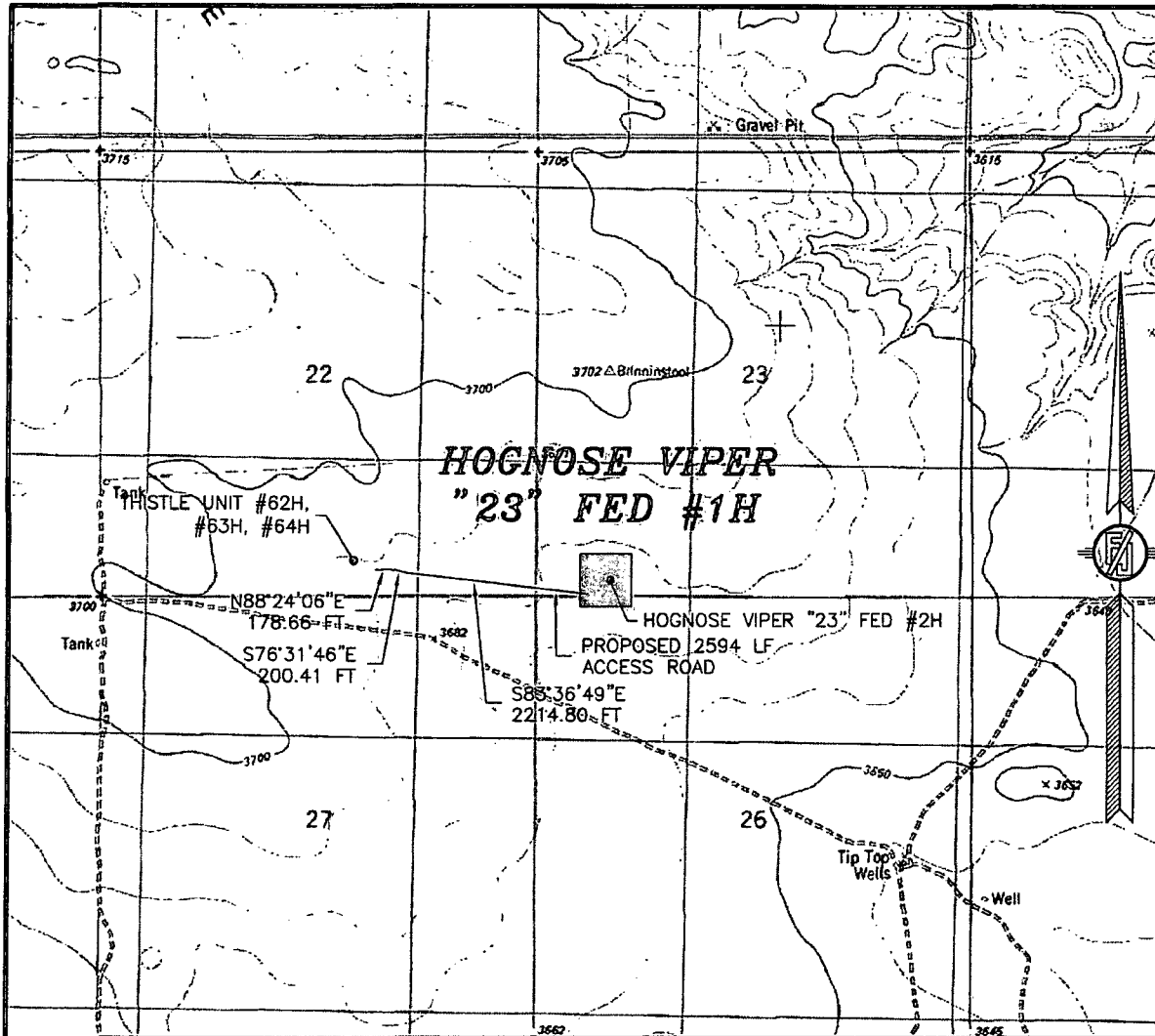
SURVEY NO. 2401

MADRON SURVEYING, INC.

301 SOUTH CANAL  
(575) 234-3341

CARLSBAD, NEW MEXICO

SECTION 23, TOWNSHIP 23 SOUTH, RANGE 33 EAST, N.M.P.M.  
LEA COUNTY, STATE OF NEW MEXICO  
LOCATION VERIFICATION MAP



USGS QUAD MAP:  
TIP TOP WELLS

NOT TO SCALE

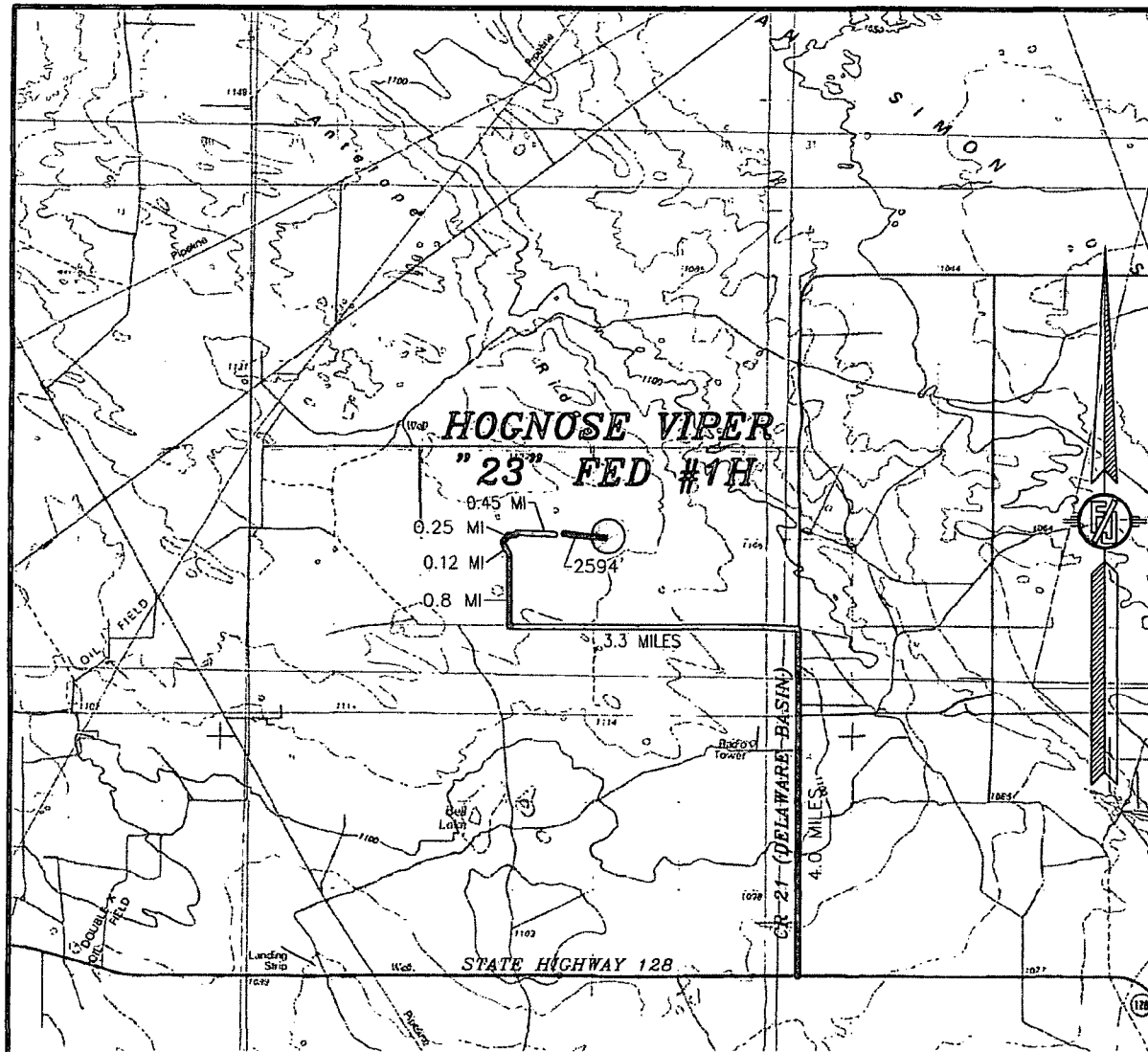
DEVON ENERGY PRODUCTION COMPANY, L.P.  
**HOGNOSE VIPER "23" FED #1H**  
LOCATED 200 FT. FROM THE SOUTH LINE  
AND 850 FT. FROM THE WEST LINE OF  
SECTION 23, TOWNSHIP 23 SOUTH,  
RANGE 33 EAST, N.M.P.M.  
LEA COUNTY, STATE OF NEW MEXICO

DECEMBER 3, 2013

SURVEY NO. 2401

MADRON SURVEYING, INC. 301 SOUTH CANAL (575) 234-3341 CARLSBAD, NEW MEXICO

SECTION 23, TOWNSHIP 23 SOUTH, RANGE 33 EAST, N.M.P.M.  
LEA COUNTY, STATE OF NEW MEXICO  
VICINITY MAP



NOT TO SCALE

DEVON ENERGY PRODUCTION COMPANY, L.P.

**HOGNOSE VIPER "23" FED #1H**  
LOCATED 200 FT. FROM THE SOUTH LINE  
AND 850 FT. FROM THE WEST LINE OF  
SECTION 23, TOWNSHIP 23 SOUTH,  
RANGE 33 EAST, N.M.P.M.  
LEA COUNTY, STATE OF NEW MEXICO

DECEMBER 3, 2013

**DIRECTIONS TO LOCATION**

FROM STATE HIGHWAY 128 AND CR 21 (DELAWARE BASIN) GO NORTH ON CR 21 4.0 MILES, TURN LEFT ON PAVED XL ROAD AND GO WEST 3.3 MILES, TURN RIGHT ON CALICHE ROAD AND GO NORTH 0.8 MILES, BEND LEFT AND GO NORTHWEST 0.12 MILES, TURN RIGHT AND GO NORTHEAST 0.25 MILES, BEND RIGHT AND GO EAST 0.45 MILES TO THISTLE UNIT #62H, #63H, & #64H PAD AND FROM SOUTHEAST PAD CORNER FOLLOW PROPOSED ROAD SURVEY FLAGS EAST 2594' TO THE SOUTHWEST CORNER OF PAD FOR THIS LOCATION.

MADRON SURVEYING, INC. 301 SOUTH CANAL (575) 234-3341 CARLSBAD, NEW MEXICO SURVEY NO. 2401

DECEMBER 3, 2013

SURVEY NO. 2401.

