

HOBBS OCD

JUL 18 2014

District I  
1625 N. French Dr., Hobbs, NM 88240  
Phone: (505) 393-6161 Fax: (505) 393-0720

District II  
811 S. First St., Artesia, NM 88210  
Phone: (505) 748-1253 Fax: (505) 748-9720

District III  
1000 Rio Brazos Road, Aztec, NM 87410  
Phone: (505) 334-6178 Fax: (505) 334-6170

District IV  
1220 S. St. Francis Dr., Santa Fe, NM 87505  
Phone: (505) 476-3460 Fax: (505) 476-3462

State of New Mexico  
Energy, Minerals & Natural Resources Department  
OIL CONSERVATION DIVISION  
1220 South St. Francis Dr.  
Santa Fe, NM 87505

Form C-102  
Revised August 1, 2011  
Submit one copy to appropriate  
District Office

☐ AMENDED REPORT

## WELL LOCATION AND ACREAGE DEDICATION PLAT

<sup>1</sup> API Number <b>30-025-41979</b>	<sup>2</sup> Pool Code <b>9653 97922</b>	<sup>3</sup> Pool Name <b>WC-0256-06 3223421Li</b> Ojo Chiseo West, Bone Springs
<sup>4</sup> Property Code <b>(30963)</b>	<sup>5</sup> Property Name <b>GAUCHO UNIT</b>	
<sup>6</sup> Well Number <b>21H</b>	<sup>7</sup> Operator Name <b>DEVON ENERGY PRODUCTION COMPANY, L.P.</b>	
<sup>8</sup> Elevation <b>3426.9</b>	<sup>9</sup> OGRID No. <b>6137</b>	

<sup>10</sup> Surface Location

UL or lot no.	Section	Township	Range	Lot Idn	Feet from the	North/South line	Feet from the	East/West line	County
<b>N 6</b>	<b>29</b>	<b>22 S</b>	<b>34 E</b>		<b>200</b>	<b>SOUTH</b>	<b>1450</b>	<b>WEST</b>	<b>LEA</b>

<sup>11</sup> Bottom Hole Location If Different From Surface

UL or lot no.	Section	Township	Range	Lot Idn	Feet from the	North/South line	Feet from the	East/West line	County
<b>D</b>	<b>29</b>	<b>22 S</b>	<b>34 E</b>		<b>330</b>	<b>NORTH</b>	<b>660</b>	<b>WEST</b>	<b>LEA</b>

<sup>12</sup> Dedicated Acres	<sup>13</sup> Joint or Infill	<sup>14</sup> Consolidation Code	<sup>15</sup> Order No.
<b>160</b>			

No allowable will be assigned to this completion until all interests have been consolidated or a non-standard unit has been approved by the division.

<p>N89°33'31"E 2632.31 FT</p> <p>NW CORNER SEC. 29 LAT. = 32.3699366°N LONG. = 103.5006503°W NMSP EAST (FT) N = 499314.79 E = 798821.43</p> <p>BOTTOM OF HOLE</p> <p>BOTTOM OF HOLE LAT. = 32.3690283°N LONG. = 103.5006503°W NMSP EAST (FT) N = 498989.46 E = 799082.18</p> <p>W Q CORNER SEC. 29 LAT. = 32.3626804°N LONG. = 103.5006679°W NMSP EAST (FT) N = 496674.30 E = 798436.55</p> <p>GAUCHO UNIT #21H ELEV. = 3426.9 LAT. = 32.3559701°N (NAD83) LONG. = 103.4959873°W NMSP EAST (FT) N = 494244.94 E = 799900.88</p> <p>SURFACE LOCATION</p> <p>S Q CORNER SEC. 29 LAT. = 32.3554204°N LONG. = 103.4921455°W NMSP EAST (FT) N = 494054.25 E = 801088.82</p> <p>SE CORNER SEC. 29 LAT. = 32.3554151°N LONG. = 103.4835984°W NMSP EAST (FT) N = 494073.15 E = 803728.18</p> <p>NOTE: LATITUDE AND LONGITUDE COORDINATES ARE SHOWN USING THE NORTH AMERICAN DATUM OF 1983 (NAD83). LISTED NEW MEXICO STATE PLANE EAST COORDINATES ARE GRID (NAD83). BASIS OF BEARING AND DISTANCES USED ARE NEW MEXICO STATE PLANE EAST COORDINATES MODIFIED TO THE SURFACE.</p>		<p>N89°33'31"E 2632.31 FT</p> <p>NE CORNER SEC. 29 LAT. = 32.3699343°N LONG. = 103.4836025°W NMSP EAST (FT) N = 499355.33 E = 803684.98</p> <p>Signature <i>David H. Cook</i> Date <b>2/24/2014</b></p> <p>Printed Name <b>David H. Cook</b> Regulatory Specialist</p> <p>E-mail Address <b>david.cook@dvn.com</b></p> <p><sup>17</sup> OPERATOR CERTIFICATION I hereby certify that the information contained herein is true and complete to the best of my knowledge and belief, and that this organization either owns a working interest or unleased mineral interest in the land including the proposed bottom hole location or has a right to drill this well at this location pursuant to a contract with an owner of such a mineral or working interest, or to a voluntary pooling agreement or a compulsory pooling order, therefore entered by the division.</p> <p><sup>18</sup> SURVEYOR CERTIFICATION I hereby certify that the well location shown on this plat was plotted from field notes of actual surveys made by me or under my supervision, and that the same is true and correct to the best of my belief.</p> <p>JULY 19 2013 MEXICO Date of Survey <b>12797</b></p> <p>Signature and Seal of Professional Surveyor <i>James Jaramillo</i> Certificate Number <b>12797</b> SURVEY NO. 2134</p>
--	--	---

PP: 200 FSL &amp; 1450 FWL

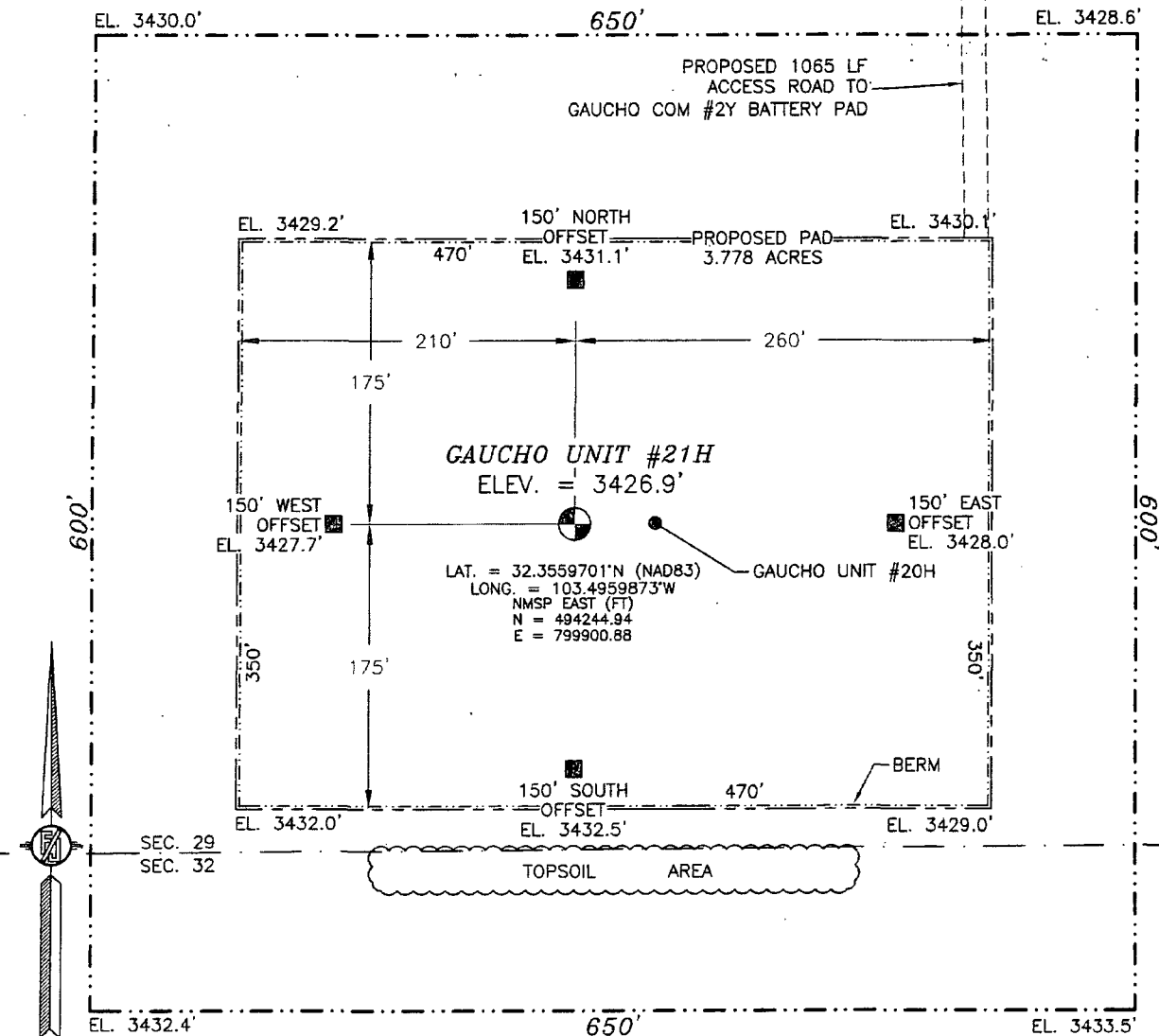
JUL 25 2014

m.

SECTION 29, TOWNSHIP 22 SOUTH, RANGE 34 EAST, N.M.P.M.  
LEA COUNTY, STATE OF NEW MEXICO

SITE MAP

NOTE: LATITUDE AND LONGITUDE COORDINATES ARE SHOWN USING THE NORTH AMERICAN DATUM OF 1983 (NAD83). LISTED NEW MEXICO STATE PLANE EAST COORDINATES ARE GRID (NAD83). BASIS OF BEARING AND DISTANCES USED ARE NEW MEXICO STATE PLANE EAST COORDINATES MODIFIED TO THE SURFACE



010 50 100 200

SCALE 1" = 100'

DIRECTIONS TO LOCATION

FROM THE INTERSECTION OF STATE HIGHWAY 128 AND DELAWARE BASIN ROAD GO NORTH AND EAST ON DELAWARE BASIN ROAD APPROX. 9.5 MILES TO LEASE ROAD ON LEFT (NORTH) TURN NORTH ON LEASE ROAD GO APPROX. 2.3 MILES TO LEASE ROAD ON LEFT (WEST) TURN WEST GO APPROX. 0.65 MILES TO EXISTING DEVON PAD (GAUCHO COM #2Y BATTERY) AT SOUTHWEST CORNER OF PAD A ROAD LATH WITH RED AND WHITE FLAGGING, FOLLOW LATHS SOUTH APPROX. 0.2 MILES TO LOCATION.

DEVON ENERGY PRODUCTION COMPANY, L.P.

GAUCHO UNIT #21H

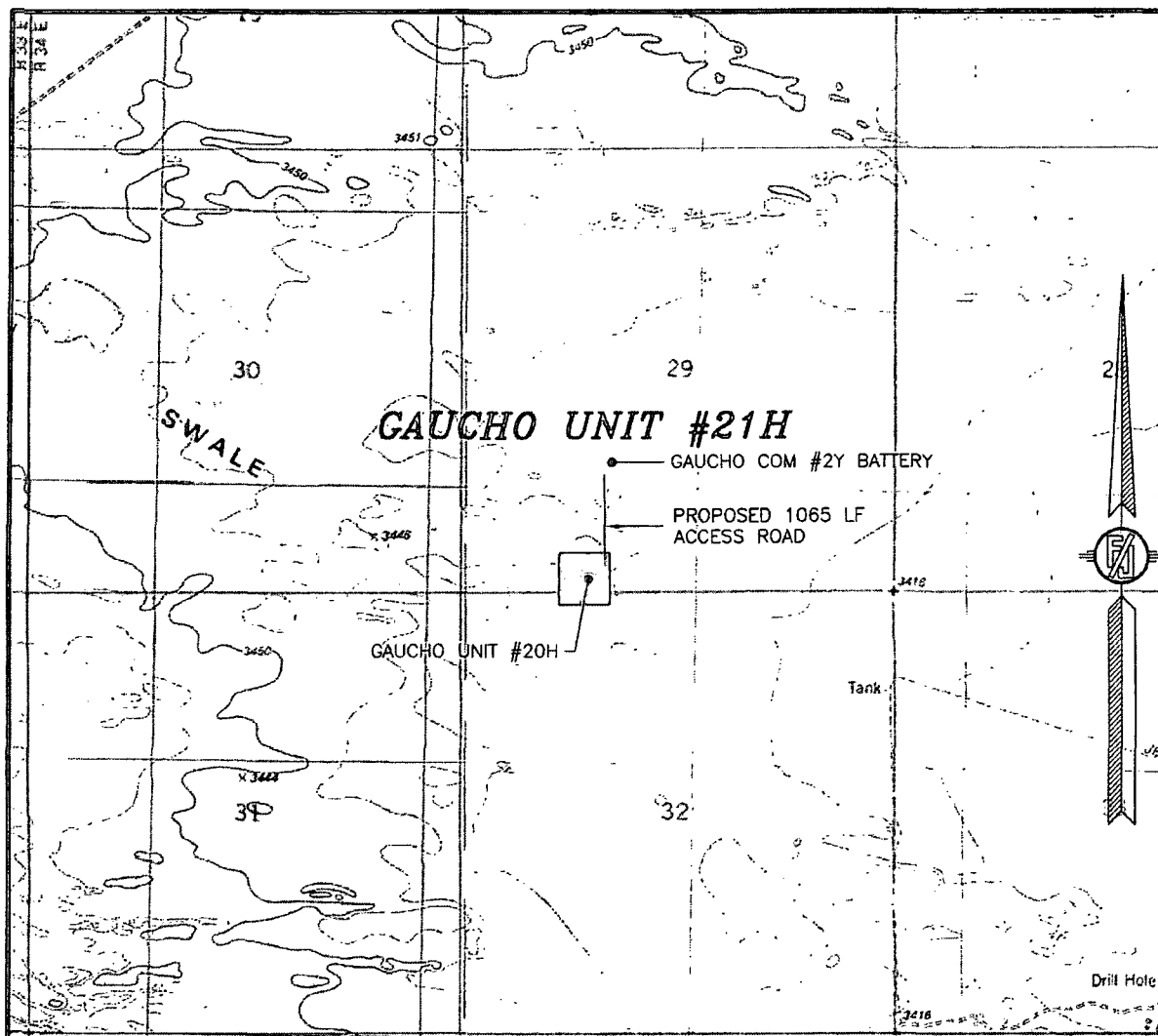
LOCATED 200 FT. FROM THE SOUTH LINE  
AND 1450 FT. FROM THE WEST LINE OF  
SECTION 29, TOWNSHIP 22 SOUTH,  
RANGE 34 EAST, N.M.P.M.  
LEA COUNTY, STATE OF NEW MEXICO

JULY 19, 2013

SURVEY NO. 2134

MADRON SURVEYING, INC. 301 SOUTH CANAL (575) 234-3341 CARLSBAD, NEW MEXICO

SECTION 29, TOWNSHIP 22 SOUTH, RANGE 34 EAST, N.M.P.M.  
LEA COUNTY, STATE OF NEW MEXICO  
LOCATION VERIFICATION MAP



USGS QUAD MAP:  
SAN SIMON RANCH

NOT TO SCALE

DEVON ENERGY PRODUCTION COMPANY, L.P.

**GAUCHO UNIT #21H**

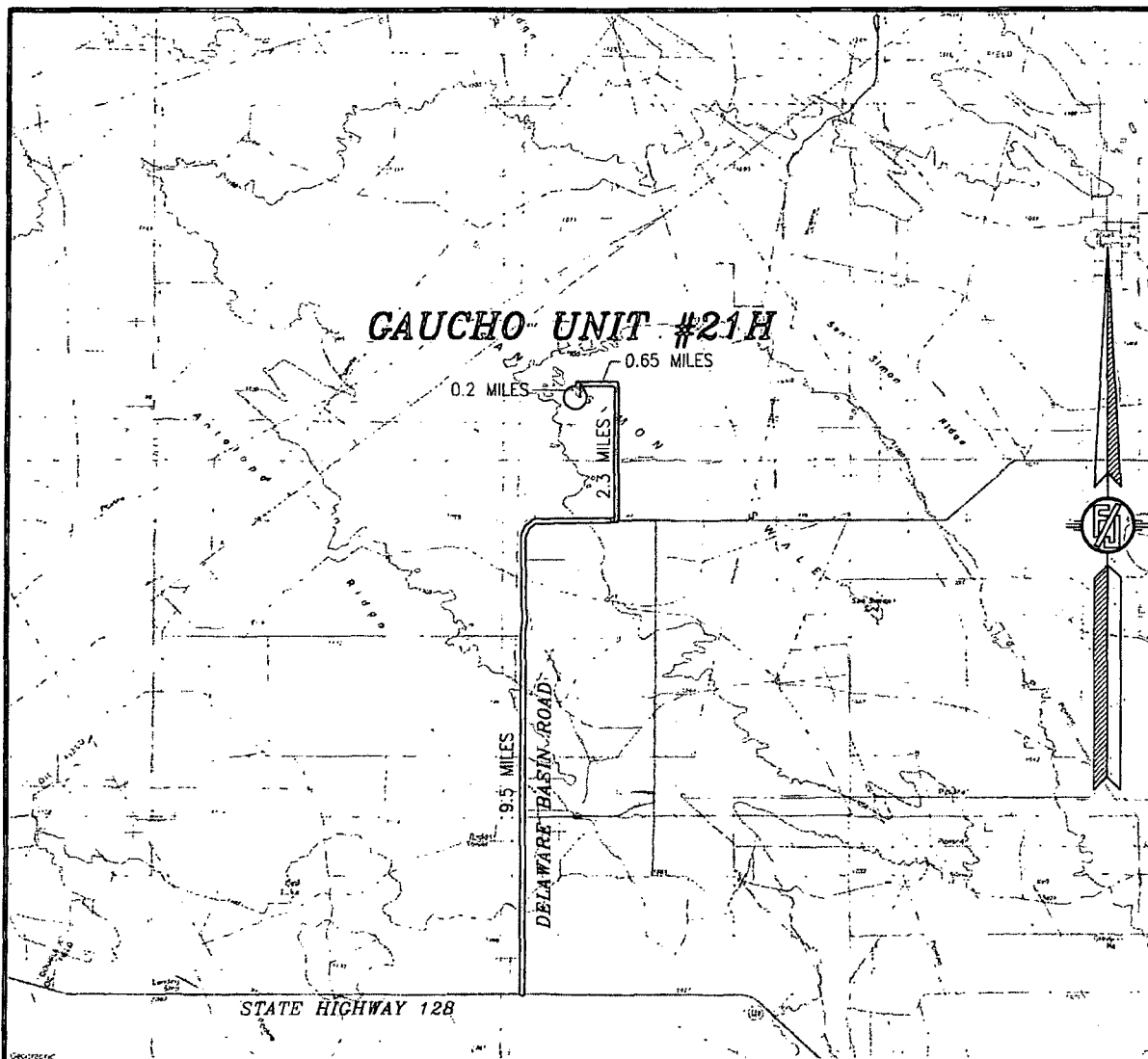
LOCATED 200 FT. FROM THE SOUTH LINE  
AND 1450 FT. FROM THE WEST LINE OF  
SECTION 29, TOWNSHIP 22 SOUTH,  
RANGE 34 EAST, N.M.P.M.  
LEA COUNTY, STATE OF NEW MEXICO

JULY 19, 2013

SURVEY NO. 2134

MADRON SURVEYING, INC. 301 SOUTH CANAL CARLSBAD, NEW MEXICO  
(575) 234-3341

SECTION 29, TOWNSHIP 22 SOUTH, RANGE 34 EAST, N.M.P.M.  
LEA COUNTY, STATE OF NEW MEXICO  
VICINITY MAP



NOT TO SCALE

DEVON ENERGY PRODUCTION COMPANY, L.P.

**GAUCHO UNIT #21H**

LOCATED 200 FT. FROM THE SOUTH LINE  
AND 1450 FT. FROM THE WEST LINE OF  
SECTION 29, TOWNSHIP 22 SOUTH,  
RANGE 34 EAST, N.M.P.M.  
LEA COUNTY, STATE OF NEW MEXICO

JULY 19, 2013

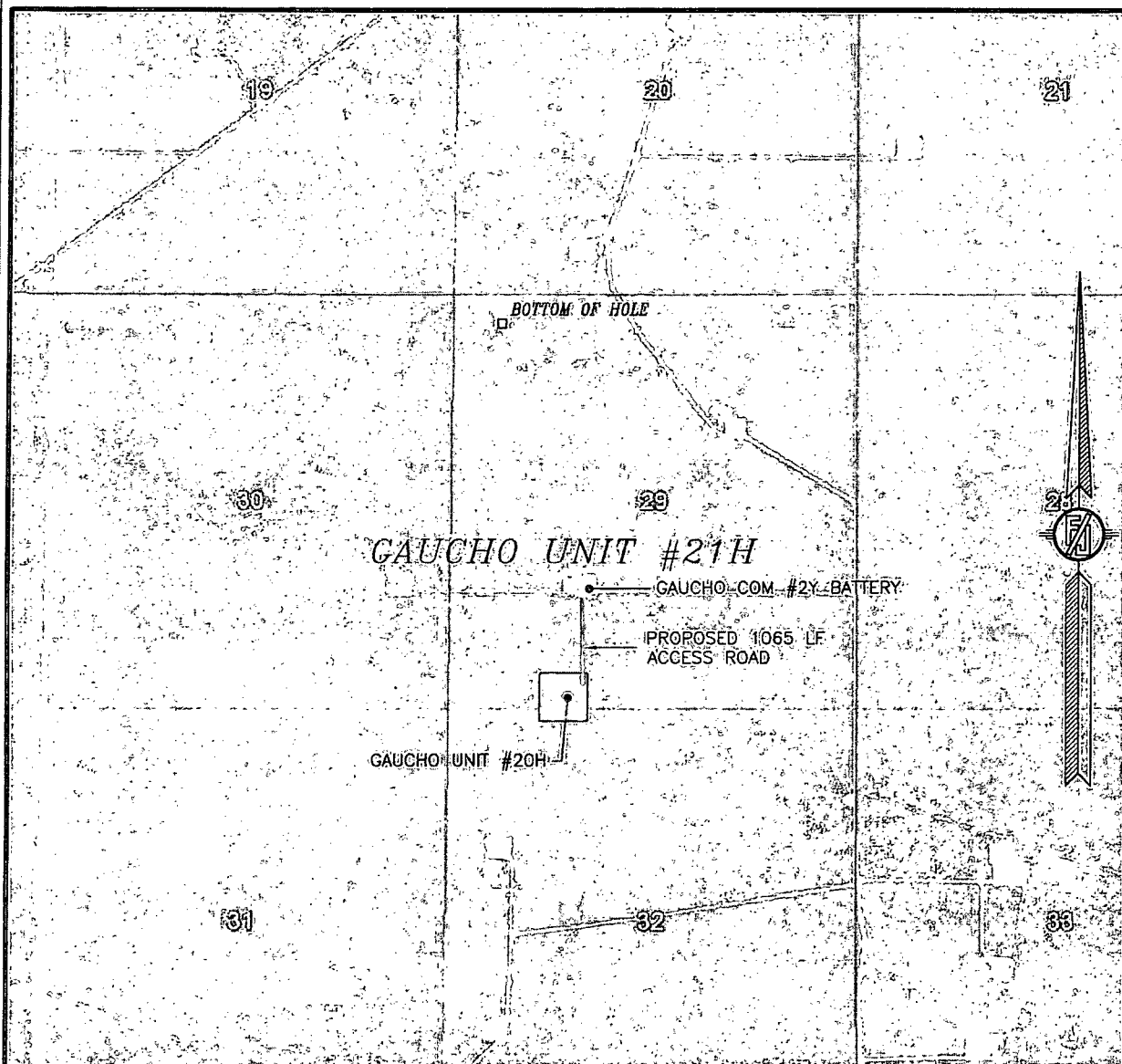
**DIRECTIONS TO LOCATION**

FROM THE INTERSECTION OF STATE HIGHWAY 128 AND DELAWARE BASIN ROAD GO NORTH AND EAST ON DELAWARE BASIN ROAD APPROX. 9.5 MILES TO LEASE ROAD ON LEFT (NORTH) TURN NORTH ON LEASE ROAD GO APPROX. 2.3 MILES TO LEASE ROAD ON LEFT (WEST) TURN WEST GO APPROX. 0.65 MILES TO EXISTING DEVON PAD (GAUCHO COM #2Y BATTERY) AT SOUTHWEST CORNER OF PAD A ROAD LATH WITH RED AND WHITE FLAGGING, FOLLOW LATHS SOUTH APPROX. 0.2 MILES TO LOCATION.

MADRON SURVEYING, INC. 301 SOUTH CANAL (575) 234-3341 CARLSBAD, NEW MEXICO

SURVEY NO. 2134

SECTION 29, TOWNSHIP 22 SOUTH, RANGE 34 EAST, N.M.P.M.  
LEA COUNTY, STATE OF NEW MEXICO  
AERIAL PHOTO



NOT TO SCALE  
AERIAL PHOTO:  
GOOGLE EARTH  
MARCH 2012

DEVON ENERGY PRODUCTION COMPANY, L.P.

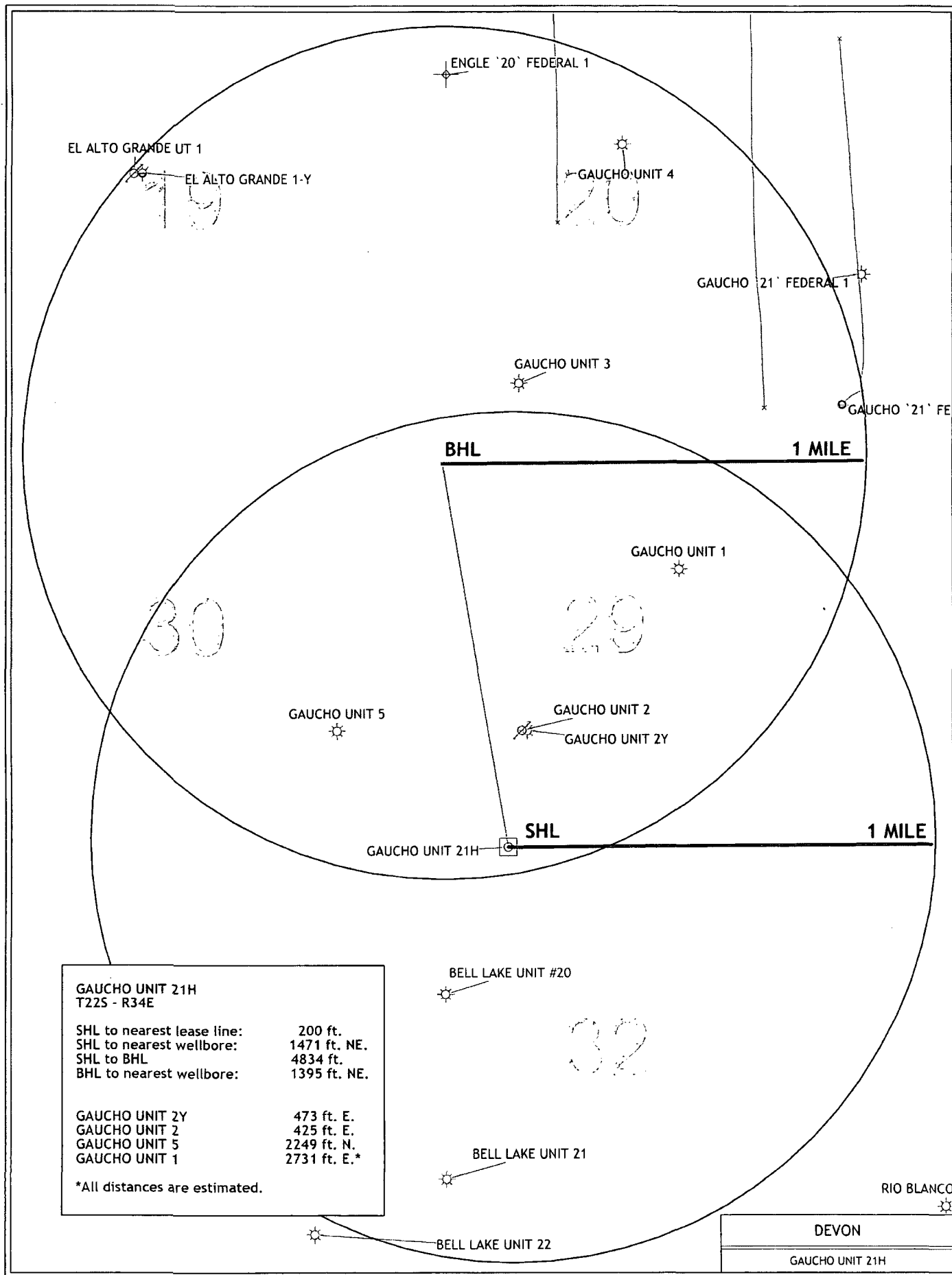
**GAUCHO UNIT #21H**

LOCATED 200 FT. FROM THE SOUTH LINE  
AND 1450 FT. FROM THE WEST LINE OF  
SECTION 29, TOWNSHIP 22 SOUTH,  
RANGE 34 EAST, N.M.P.M.  
LEA COUNTY, STATE OF NEW MEXICO

JULY 19, 2013

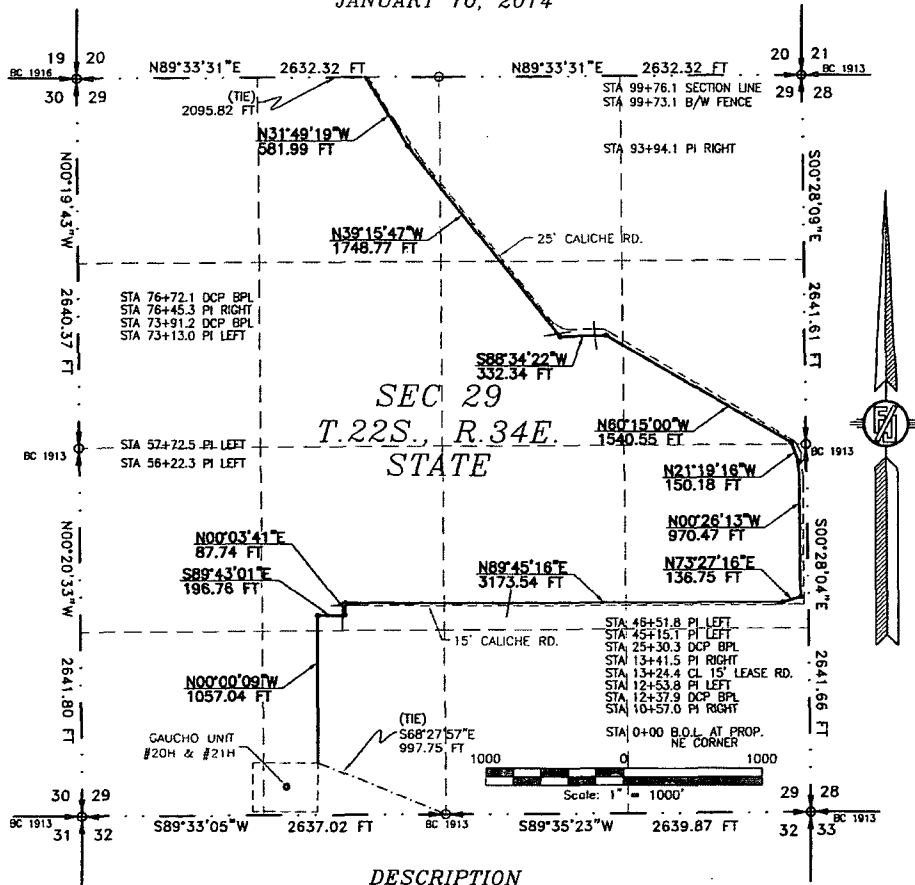
SURVEY NO. 2134

MADRON SURVEYING, INC. 301 SOUTH CANAL (575) 234-3341 CARLSBAD, NEW MEXICO



2-4" POLY FLEX SURFACE FLOW LINES FROM THE GAUCHO UNIT #20H & #21H WELLS TO THE GAUCHO UNIT CENTRAL BATTERY

DEVON ENERGY PRODUCTION COMPANY, L.P.  
CENTERLINE SURVEY OF A PIPELINE CROSSING  
SECTION 29, TOWNSHIP 22 SOUTH, RANGE 34 EAST, N.M.P.M.  
LEA COUNTY, STATE OF NEW MEXICO  
JANUARY 10, 2014



DESCRIPTION

A STRIP OF LAND 30 FEET WIDE CROSSING STATE OF NEW MEXICO LAND IN SECTION 29, TOWNSHIP 22 SOUTH, RANGE 34 EAST, N.M.P.M., LEA COUNTY, STATE OF NEW MEXICO AND BEING 15 FEET EACH SIDE OF THE FOLLOWING DESCRIBED CENTERLINE SURVEY:

BEGINNING AT A POINT WITHIN THE SE/4 SW/4 OF SAID SECTION 29, TOWNSHIP 22 SOUTH, RANGE 34 EAST, N.M.P.M., WHENCE THE SOUTH QUARTER CORNER OF SAID SECTION 29, TOWNSHIP 22 SOUTH, RANGE 34 EAST, N.M.P.M. BEARS S68°27'57"E, A DISTANCE OF 997.75 FEET; THENCE N00°00'09"W A DISTANCE OF 1057.04 FEET TO AN ANGLE POINT OF THE LINE HEREIN DESCRIBED; THENCE S89°43'01"E A DISTANCE OF 196.76 FEET TO AN ANGLE POINT OF THE LINE HEREIN DESCRIBED; THENCE N00°03'41"E A DISTANCE OF 87.74 FEET TO AN ANGLE POINT OF THE LINE HEREIN DESCRIBED; THENCE N89°45'16"E A DISTANCE OF 3173.54 FEET TO AN ANGLE POINT OF THE LINE HEREIN DESCRIBED; THENCE N73°27'16"E A DISTANCE OF 136.75 FEET TO AN ANGLE POINT OF THE LINE HEREIN DESCRIBED; THENCE N00°26'13"W A DISTANCE OF 970.47 FEET TO AN ANGLE POINT OF THE LINE HEREIN DESCRIBED; THENCE N21°19'16"W A DISTANCE OF 150.18 FEET TO AN ANGLE POINT OF THE LINE HEREIN DESCRIBED; THENCE N60°15'00"W A DISTANCE OF 1540.55 FEET TO AN ANGLE POINT OF THE LINE HEREIN DESCRIBED; THENCE S88°34'22"W A DISTANCE OF 332.34 FEET TO AN ANGLE POINT OF THE LINE HEREIN DESCRIBED; THENCE N39°15'47"W A DISTANCE OF 1748.77 FEET TO THE TERMINUS OF THIS CENTERLINE SURVEY, WHENCE THE NORTHWEST CORNER OF SAID SECTION 29, TOWNSHIP 22 SOUTH, RANGE 34 EAST, N.M.P.M. BEARS S89°33'31"W, A DISTANCE OF 2095.82 FEET;

SAID STRIP OF LAND BEING 9976.13 FEET OR 804.62 RODS IN LENGTH, CONTAINING 6.870 ACRES MORE OR LESS AND BEING ALLOCATED BY FORTIES AS FOLLOWS:

SE/4 SW/4	947.14 L.F.	57.40 RODS	0.652 ACRES
NE/4 SW/4	1115.50 L.F.	67.61 RODS	0.768 ACRES
NW/4 SE/4	1318.88 L.F.	79.93 RODS	0.908 ACRES
NE/4 SE/4	2376.84 L.F.	144.05 RODS	1.637 ACRES
SE/4 NE/4	1415.20 L.F.	85.77 RODS	0.975 ACRES
SW/4 NE/4	1163.37 L.F.	70.51 RODS	0.801 ACRES
NW/4 NE/4	686.07 L.F.	41.58 RODS	0.473 ACRES
NE/4 NW/4	953.13 L.F.	57.77 RODS	0.656 ACRES

SURVEYOR CERTIFICATE

I, FILMON F. JARAMILLO, A NEW MEXICO PROFESSIONAL SURVEYOR NO. 12797, HEREBY CERTIFY THAT I HAVE CONDUCTED AND AM RESPONSIBLE FOR THIS SURVEY, THAT THIS SURVEY IS TRUE AND CORRECT TO THE BEST OF MY KNOWLEDGE AND BELIEF, AND THAT THIS SURVEY AND PLAT MEET THE MINIMUM STANDARDS FOR LAND SURVEYING IN THE STATE OF NEW MEXICO.

IN WITNESS WHEREOF, THIS CERTIFICATE IS EXECUTED AT CARLSBAD,

NEW MEXICO, THIS 17 DAY OF JANUARY 2014

MADRON SURVEYING, INC.  
301 SOUTH CANAL  
CARLSBAD, NEW MEXICO 88220  
Phone (575) 234-3341

GENERAL NOTES

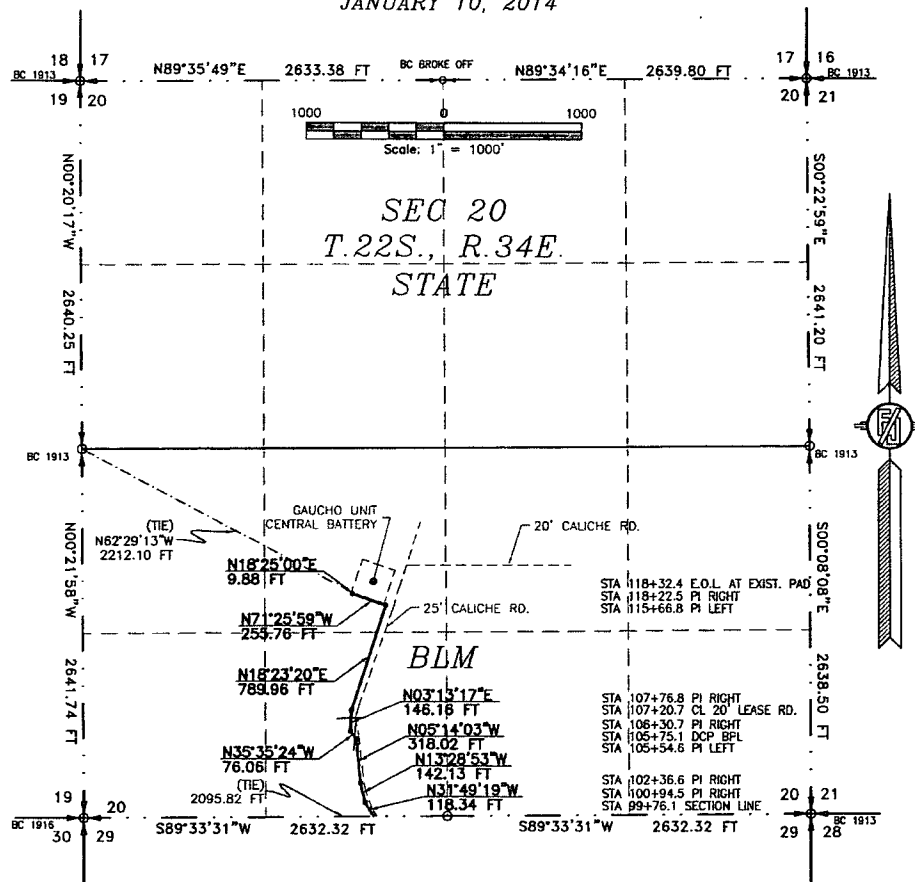
- 1.) THE INTENT OF THIS ROUTE SURVEY IS TO ACQUIRE AN EASEMENT.
- 2.) BASIS OF BEARING IS NMSP EAST MODIFIED TO SURFACE COORDINATES.

SHEET: 1-4

MADRON SURVEYING, INC. 301 SOUTH CANAL (575) 234-3341 CARLSBAD, NEW MEXICO

SURVEY NO. 2583

DEVON ENERGY PRODUCTION COMPANY, L.P.  
CENTERLINE SURVEY OF A PIPELINE CROSSING  
SECTION 20, TOWNSHIP 22 SOUTH, RANGE 34 EAST, N.M.P.M.  
LEA COUNTY, STATE OF NEW MEXICO  
JANUARY 10, 2014



A STRIP OF LAND 30 FEET WIDE CROSSING BUREAU OF LAND MANAGEMENT LAND IN SECTION 20, TOWNSHIP 22 SOUTH, RANGE 34 EAST, N.M.P.M., LEA COUNTY, STATE OF NEW MEXICO AND BEING 15 FEET EACH SIDE OF THE FOLLOWING DESCRIBED CENTERLINE SURVEY:

THENCE N31°49'19"W A DISTANCE OF 118.34 FEET TO AN ANGLE POINT OF THE LINE HEREIN DESCRIBED;  
THENCE N13°28'53"W A DISTANCE OF 142.13 FEET TO AN ANGLE POINT OF THE LINE HEREIN DESCRIBED;  
THENCE N05°14'03"W A DISTANCE OF 318.02 FEET TO AN ANGLE POINT OF THE LINE HEREIN DESCRIBED;  
THENCE N35°35'24"W A DISTANCE OF 76.06 FEET TO AN ANGLE POINT OF THE LINE HEREIN DESCRIBED;  
THENCE N03°13'17"E A DISTANCE OF 146.16 FEET TO AN ANGLE POINT OF THE LINE HEREIN DESCRIBED;  
THENCE N18°23'20"E A DISTANCE OF 789.96 FEET TO AN ANGLE POINT OF THE LINE HEREIN DESCRIBED;  
THENCE N71°25'59"W A DISTANCE OF 255.76 FEET TO AN ANGLE POINT OF THE LINE HEREIN DESCRIBED;  
THENCE N18°25'00"E A DISTANCE OF 9.88 FEET THE TERMINUS OF THIS CENTERLINE SURVEY, WHENCE THE WEST QUARTER CORNER  
OF SAID SECTION 20, TOWNSHIP 22 SOUTH, RANGE 34 EAST, N.M.P.M. BEARS N62°29'13"W, A DISTANCE OF 2212.10 FEET;

SE/4 SW/4	1387.88 L.F.	84.11 RODS	0.956 ACRES
NE/4 SW/4	468.43 L.F.	28.39 RODS	0.323 ACRES

I, FILMON F. JARAMILLO, A NEW MEXICO PROFESSIONAL SURVEYOR NO. 12797, HEREBY CERTIFY THAT I HAVE CONDUCTED AND AM RESPONSIBLE FOR THIS SURVEY, THAT THIS SURVEY IS TRUE AND CORRECT TO THE BEST OF MY KNOWLEDGE AND BELIEF, AND THAT THIS SURVEY AND PLAT MEET THE MINIMUM STANDARDS FOR LAND SURVEYING IN THE STATE OF NEW MEXICO.

NEW MEXICO, THIS 17 DAY OF JANUARY 2014

*SURVEY NO. 2583*

1.) THE INTENT OF THIS ROUTE SURVEY IS TO ACQUIRE AN EASEMENT.

2.) BASIS OF BEARING IS NMSP EAST  
MODIFIED TO SURFACE COORDINATES.

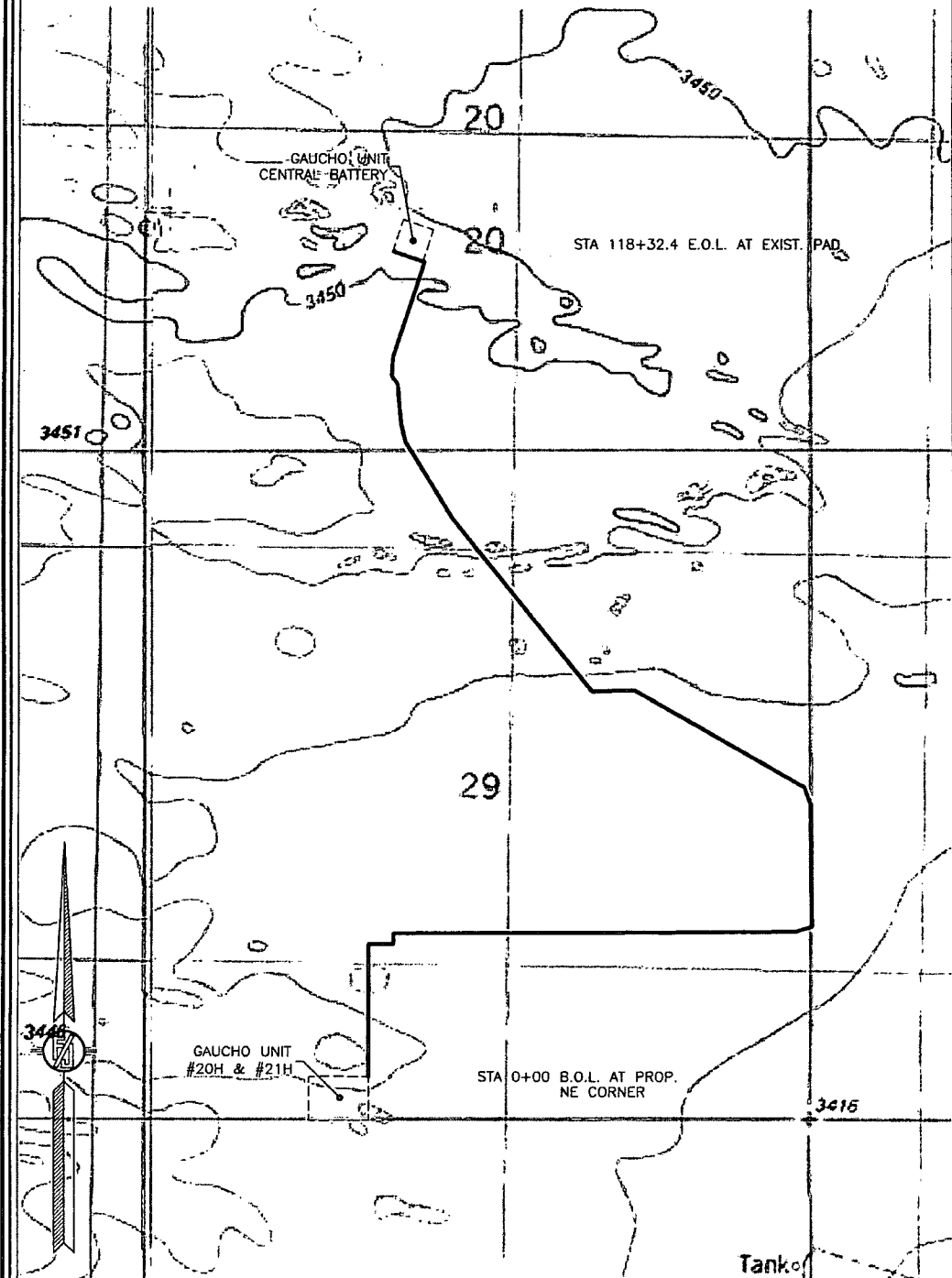
*SHEET: 2-4*

MADRON SURVEYING, (INC. 304 SOUTH CANAL  
(575) 234-3341 CARLSBAD, NEW MEXICO



2-4" POLY FLEX SURFACE FLOW LINES FROM THE GAUCHO UNIT #20H & #21H WELLS TO THE GAUCHO UNIT CENTRAL BATTERY

DEVON ENERGY PRODUCTION COMPANY, L.P.  
CENTERLINE SURVEY OF A PIPELINE CROSSING  
SECTION 29, 20, TOWNSHIP 22 SOUTH, RANGE 34 EAST, N.M.P.M.  
LEA COUNTY, STATE OF NEW MEXICO  
JANUARY 10, 2014



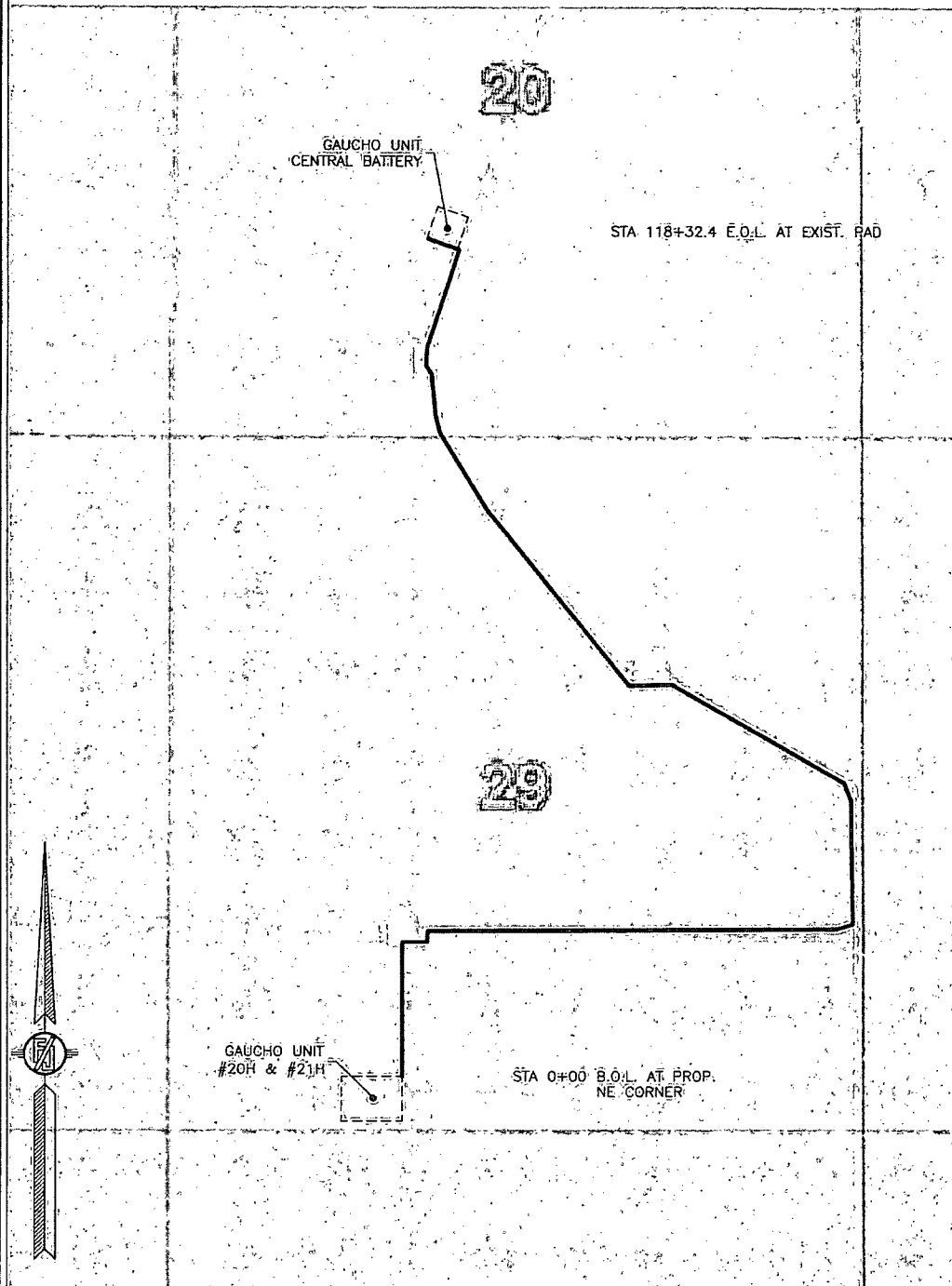
SHEET: 3-4

MADRON SURVEYING, INC. 301 SOUTH CANAL CARLSBAD, NEW MEXICO  
(505) 234-3341

SURVEY NO. 2583

2-4" POLY FLEX SURFACE FLOW LINES FROM THE GAUCHO UNIT #20H & #21H WELLS TO THE GAUCHO UNIT CENTRAL BATTERY

DEVON ENERGY PRODUCTION COMPANY, L.P.  
CENTERLINE SURVEY OF A PIPELINE CROSSING  
SECTION 29, 20, TOWNSHIP 22 SOUTH, RANGE 34 EAST, N.M.P.M.  
LEA COUNTY, STATE OF NEW MEXICO  
JANUARY 10, 2014



SHEET: 4-4

MADRON SURVEYING, INC. 301 SOUTH CANAL CARLSBAD, NEW MEXICO  
(975) 234-3341

SURVEY NO. 2583