

DISTRICT I  
1625 N. French Dr., Hobbs, NM 88240  
Phone: (575) 393-6161 Fax: (575) 393-0720

DISTRICT II  
811 S. First St., Artesia, NM 88210  
Phone: (575) 748-1283 Fax: (575) 748-9722

DISTRICT III  
1000 Rio Brazos Road, Aztec, NM 87410  
Phone: (505) 334-6178 Fax: (505) 334-6170

DISTRICT IV  
1220 S. St. Francis Dr., Santa Fe, NM 87505  
Phone: (505) 476-3460 Fax: (505) 476-3462

HOBBS OCD

JUL 23 2014

RECEIVED

State of New Mexico  
Energy, Minerals & Natural Resources Department

OIL CONSERVATION DIVISION

1220 South St. Francis Dr.  
Santa Fe, New Mexico 87505

Form C-102

Revised August 1, 2011

Submit one copy to appropriate  
District Office

AMENDED REPORT

WELL LOCATION AND ACREAGE DEDICATION PLAT

API Number 30-025- <b>41980</b>	Pool Code 28435	Pool Name GRAMMA RIDGE-BONE SPRING NORTHEAST
Property Code 40096	Property Name GRAMMA 27 STATE	Well Number 3H
OGRID No. 249099	Operator Name CAZA OPERATING, LLC	Elevation 3688'

Surface Location

UL or lot No.	Section	Township	Range	Lot Idn	Feet from the	North/South line	Feet from the	East/West line	County
O	27	21-S	34-E		420	SOUTH	2310	EAST	LEA

Bottom Hole Location If Different From Surface

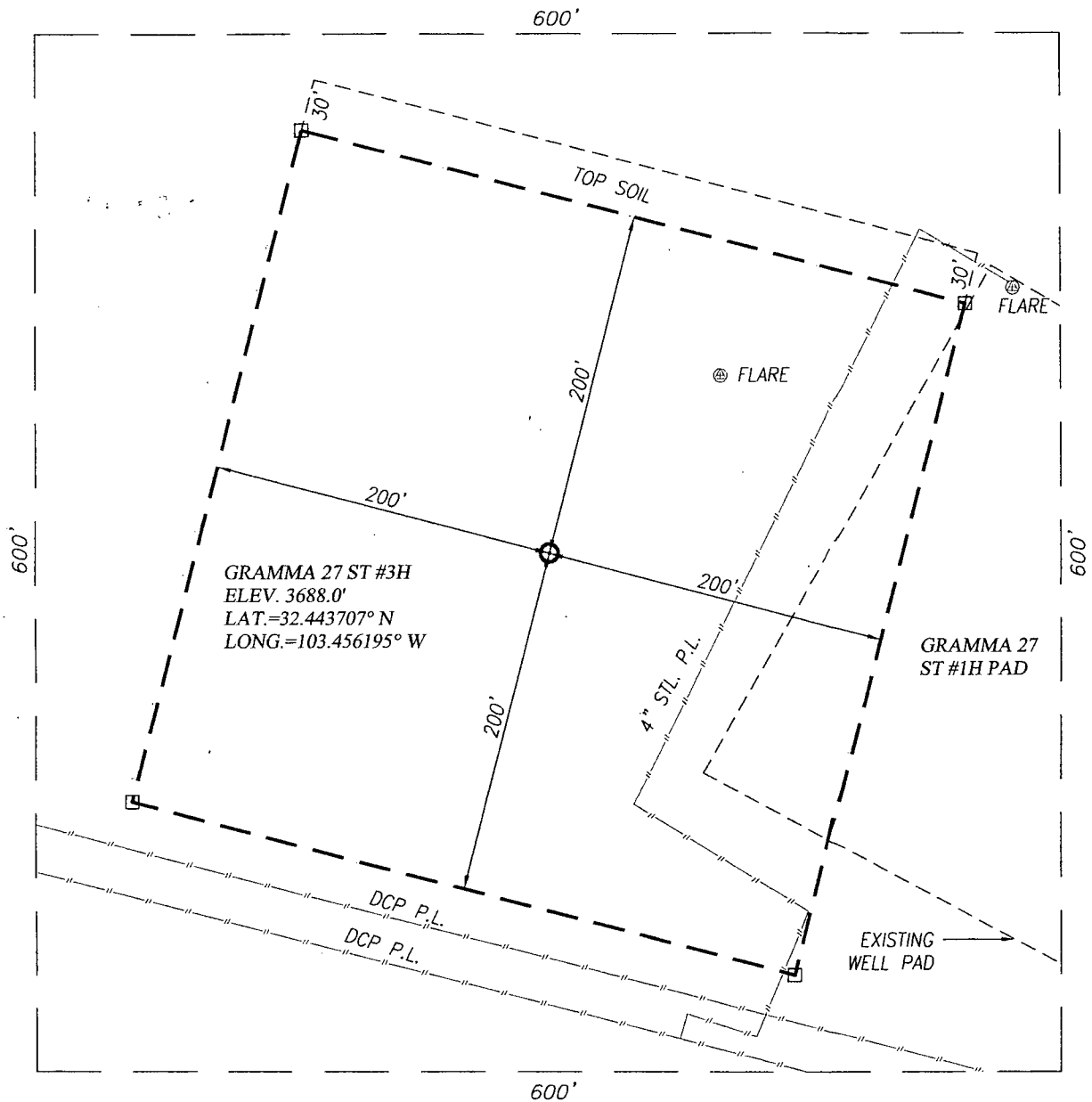
UL or lot No.	Section	Township	Range	Lot Idn	Feet from the	North/South line	Feet from the	East/West line	County
B	27	21-S	34-E		330	NORTH	1980	EAST	LEA

Dedicated Acres <b>160</b>	Joint or Infill	Consolidation Code	Order No.
-------------------------------	-----------------	--------------------	-----------

NO ALLOWABLE WILL BE ASSIGNED TO THIS COMPLETION UNTIL ALL INTERESTS HAVE BEEN CONSOLIDATED OR A NON-STANDARD UNIT HAS BEEN APPROVED BY THE DIVISION

<p>BOTTOM HOLE LOCATION Y= 530780.0 N X= 770885.8 E</p>		<p><b>OPERATOR CERTIFICATION</b></p> <p>I hereby certify that the information herein is true and complete to the best of my knowledge and belief, and that this organization either owns a working interest or unleased mineral interest in the land including the proposed bottom hole location or has a right to drill this well at this location pursuant to a contract with an owner of such mineral or working interest, or to a voluntary pooling agreement or a compulsory pooling order heretofore entered by the division.</p> <p><i>Joe T. Janica</i> Signature Date Joe T. Janica 07/23/14 Printed Name joejanica@valornet.com E-mail Address</p>
<p><b>CORNER COORDINATES TABLE</b></p> <p>A - Y= 531103.1 N, X= 770218.9 E B - Y= 531116.6 N, X= 771540.6 E C - Y= 525834.9 N, X= 771587.6 E D - Y= 525822.3 N, X= 770266.9 E</p>		<p><b>SURVEYOR CERTIFICATION</b></p> <p>I hereby certify that the well location shown on this plat was plotted from field notes of actual surveys made by me or under my supervision, and that the same is true and correct to the best of my belief.</p> <p>JUNE 30, 2014</p> <p>Date of Survey Signature &amp; Seal of Professional Surveyor:  Certificate Number 3239 LSL JWSC W.O.: 14.11.0663</p>
<p><b>GEODETIC COORDINATES</b> NAD 27 NME</p> <p><b>SURFACE LOCATION</b> Y= 526245.4 N X= 770595.2 E</p> <p>LAT.=32.443707° N LONG.=103.456195° W</p> <p>LAT.=32°26'37" N LONG.=103°27'22" W</p>		

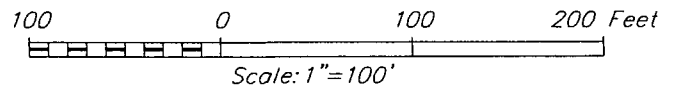
JUL 25 2014



NOTE:  
1) SEE "LOCATION VERIFICATION MAP"  
FOR PROPOSED ROAD LOCATION.

#### DIRECTIONS TO GRAMMA 27 STATE #3H

FROM THE INTERSECTION OF HWY. 176 AND CO. RD. (SAN SIMON RD.) GO WEST ON HWY 176 APPROX. 0.1 MILE, TURN LEFT AND GO SOUTH APPROX 0.1 MILE TURN RIGHT AT Y AND GO SOUTHWEST APPROX. 3.2 MILES, ROAD VEERS LEFT AND GOES SOUTH APPROX 0.5 MILES, TURN RIGHT AND GO WEST APPROX 0.25 MILES TO GRAMMA 27 DT #1H, AND THIS WELL LOCATION.



## CAZA OPERATING, LLC

GRAMMA 27 STATE #3H WELL  
LOCATED 420 FEET FROM THE SOUTH LINE  
AND 2310 FEET FROM THE EAST LINE OF SECTION 27,  
TOWNSHIP 21 SOUTH, RANGE 34 EAST, N.M.P.M.,  
LEA COUNTY, NEW MEXICO



PROVIDING SURVEYING SERVICES  
SINCE 1946  
**JOHN WEST SURVEYING COMPANY**  
412 N. DAL PASO HOBBS, N.M. 88240  
(575) 393-3117 www.jwsc.biz  
TBPLS# 10021000

Survey Date: 6/30/14

CAD Date: 7/8/14

Drawn By: LSL

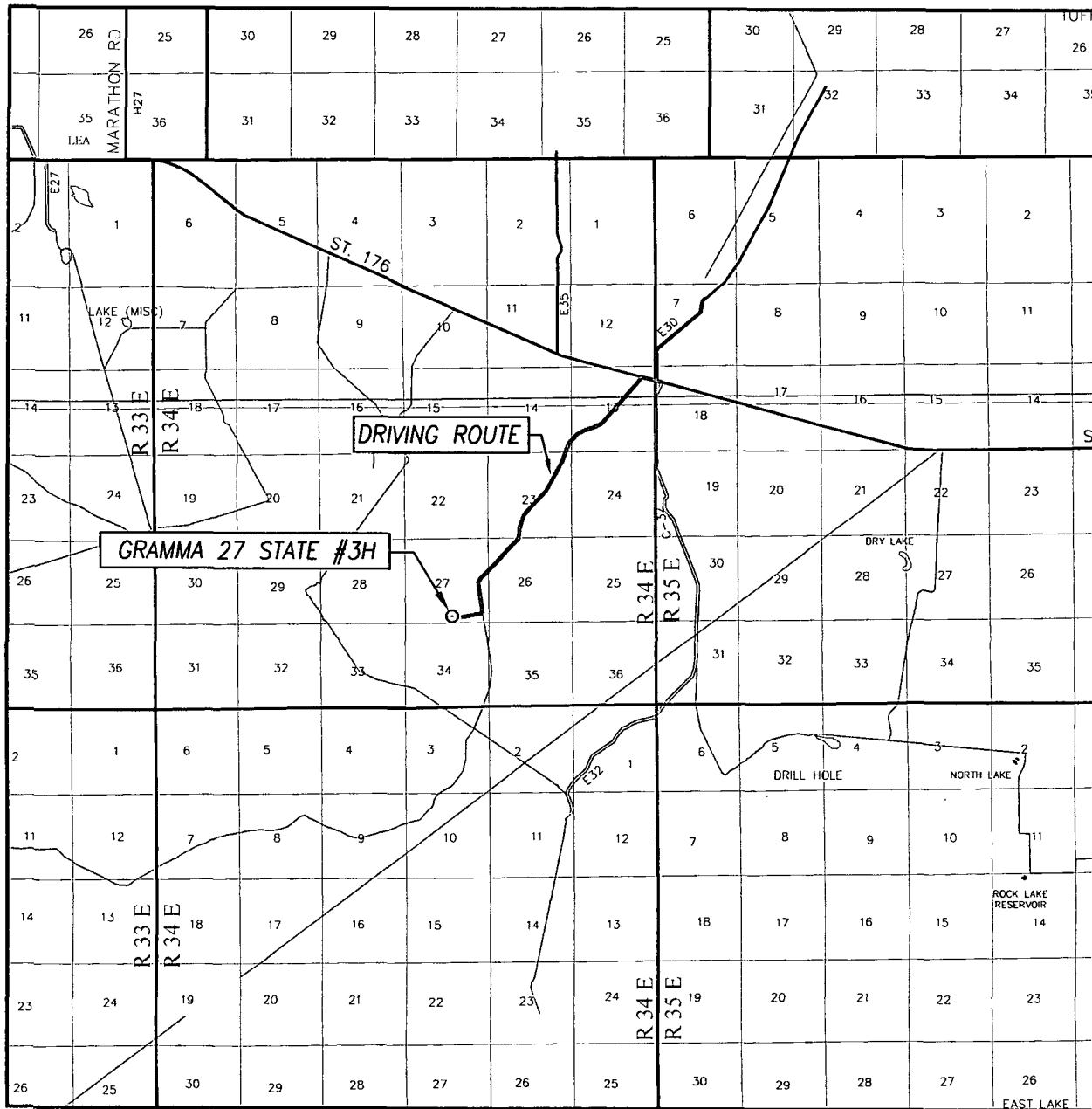
W.O. No.: 14110663

Rev: .

Rel. W.O.:

Sheet 1 of 1

# VICINITY MAP



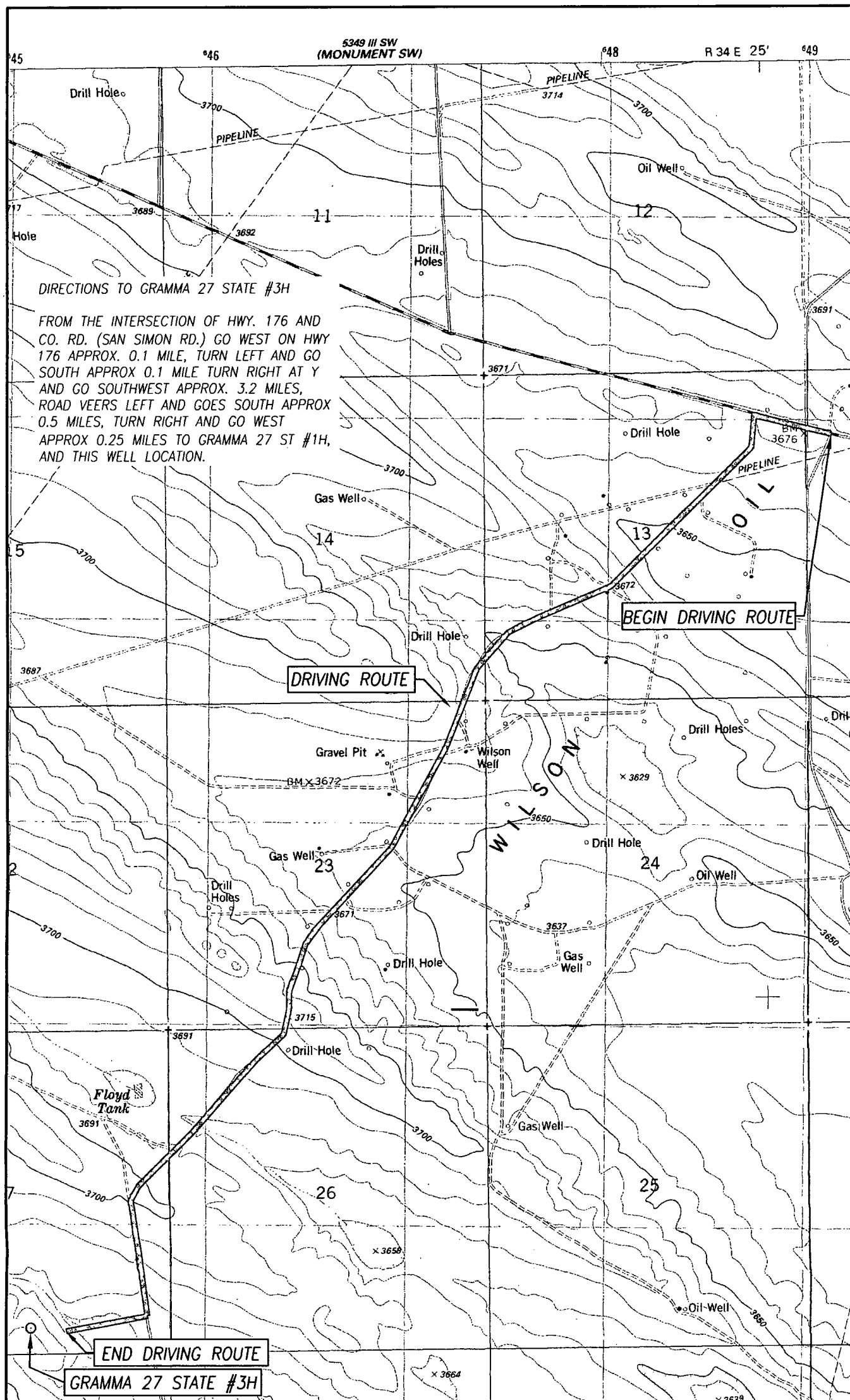
SCALE: 1" = 2 MILES  
DRIVING ROUTE: SEE LOCATION VERIFICATION MAP

SEC. 27 TWP. 21-S RGE. 34-E  
SURVEY N.M.P.M.  
COUNTY LEA STATE NEW MEXICO  
DESCRIPTION 420' FSL & 2310' FEL  
ELEVATION 3688'  
OPERATOR CAZA OPERATING, LLC  
LEASE GRAMMA 27 STATE



PROVIDING SURVEYING SERVICES  
SINCE 1946  
**JOHN WEST SURVEYING COMPANY**  
412 N. DAL PASO HOBBS, N.M. 88240  
(575) 393-3117 [www.jwsc.biz](http://www.jwsc.biz)  
TBPLS# 10021000

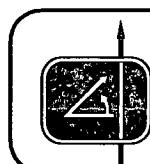
# LOCATION VERIFICATION MAP



SEC. 27 TWP. 21-S RGE. 34-E  
 COUNTY LEA STATE NEW MEXICO  
 DESCRIPTION 420' FSL & 2310' FEL  
 ELEVATION 3688'  
 OPERATOR CAZA OPERATING, LLC  
 LEASE GRAMMA 27 STATE  
 U.S.G.S. TOPOGRAPHIC MAP  
 SAN SIMON RANCH, N.M. SURVEY N.M.P.M.

SCALE: 1" = 2000'

CONTOUR INTERVAL:  
 SAN SIMON RANCH, N.M. - 10'



PROVIDING SURVEYING SERVICES  
 SINCE 1946  
**JOHN WEST SURVEYING COMPANY**  
 412 N. DAL PASO HOBBS, N.M. 88240  
 (575) 393-3117 www.jwsc.biz  
 TBPLS# 10021000