

District I  
1625 N. French Dr., Hobbs, NM 88240  
Phone: (575) 293-6161 Fax: (575) 293-0720  
District II  
311 S. First St., Artesia, NM 88210  
Phone: (575) 748-1283 Fax: (575) 748-0720  
District III  
1000 Rio Brazos Road, Aztec, NM 87410  
Phone: (505) 334-6178 Fax: (505) 334-6170  
District IV  
1220 S. St. Francis Dr., Santa Fe, NM 87505  
Phone: (505) 476-3460 Fax: (505) 476-3462

State of New Mexico  
Energy, Minerals & Natural Resources Department  
OIL CONSERVATION DIVISION  
1220 South St. Francis Dr.  
Santa Fe, NM 87505

Form C-102  
Revised August 1, 2011  
Submit one copy to appropriate  
District Office

JUL 28 2014

RECEIVED

☐ AMENDED REPORT

WELL LOCATION AND ACREAGE DEDICATION PLAT

<sup>1</sup> API Number <b>30-025-41996</b>	<sup>2</sup> Pool Code <b>96715</b>	<sup>3</sup> Pool Name <b>WNC-025 G-05 5253209L; Bone Spring</b>
<sup>4</sup> Property Code <b>300635</b>	<sup>5</sup> Property Name <b>COTTON DRAW UNIT</b>	
<sup>7</sup> OGRID No. <b>6137</b>	<sup>8</sup> Operator Name <b>DEVON ENERGY PRODUCTION COMPANY, L.P.</b>	
		<sup>6</sup> Well Number <b>237H</b>
		<sup>9</sup> Elevation <b>3445.5</b>

<sup>10</sup> Surface Location

UL or lot no.	Section	Township	Range	Lot Idn	Feet from the	North/South line	Feet from the	East/West line	County
<b>M</b>	<b>10</b>	<b>25 S</b>	<b>32 E</b>		<b>200</b>	<b>SOUTH</b>	<b>950</b>	<b>WEST</b>	<b>LEA</b>

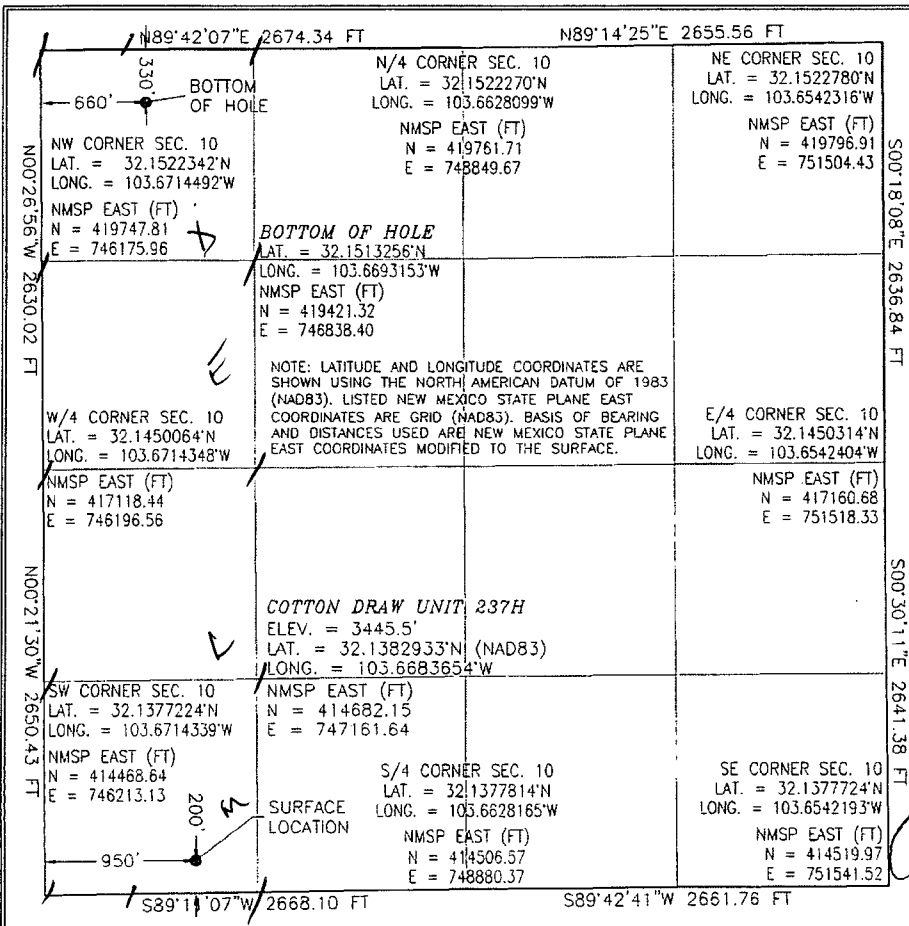
<sup>11</sup> Bottom Hole Location If Different From Surface

UL or lot no.	Section	Township	Range	Lot Idn	Feet from the	North/South line	Feet from the	East/West line	County
<b>D</b>	<b>10</b>	<b>25 S</b>	<b>32 E</b>		<b>330</b>	<b>NORTH</b>	<b>660</b>	<b>WEST</b>	<b>LEA</b>

<sup>12</sup> Dedicated Acres <b>160</b>	<sup>13</sup> Joint or Infill	<sup>14</sup> Consolidation Code	<sup>15</sup> Order No.
---	-------------------------------	----------------------------------	-------------------------

No allowable will be assigned to this completion until all interests have been consolidated or a non-standard unit has been approved by the division.

<p><sup>17</sup> OPERATOR CERTIFICATION</p> <p>I hereby certify that the information contained herein is true and complete to the best of my knowledge and belief, and that this organization either owns a working interest or released mineral interest in the land including the proposed bottom hole location or has a right to drill this well at this location pursuant to a contract with an owner of such a mineral or working interest, or to a voluntary pooling agreement or a compulsory pooling order heretofore entered by the division.</p> <p><i>Patti Riechers</i> 12/17/2013 Signature Date Patti Riechers, Regulatory Specialist Printed Name patti.riechers@dmv.com E-mail Address</p>	
<p><sup>18</sup> SURVEYOR CERTIFICATION</p> <p>I hereby certify that the well location shown on this plat was plotted from field notes of actual surveys made by me or under my supervision, and that the same is true and correct to the best of my belief.</p> <p>DECEMBER 12, 2013 Date of Survey 12797 Signature and Seal of Professional Surveyor Certificate Number: FILIXON F. JARAMILLO, PLS 12797 SURVEY NO. 2140A</p>	

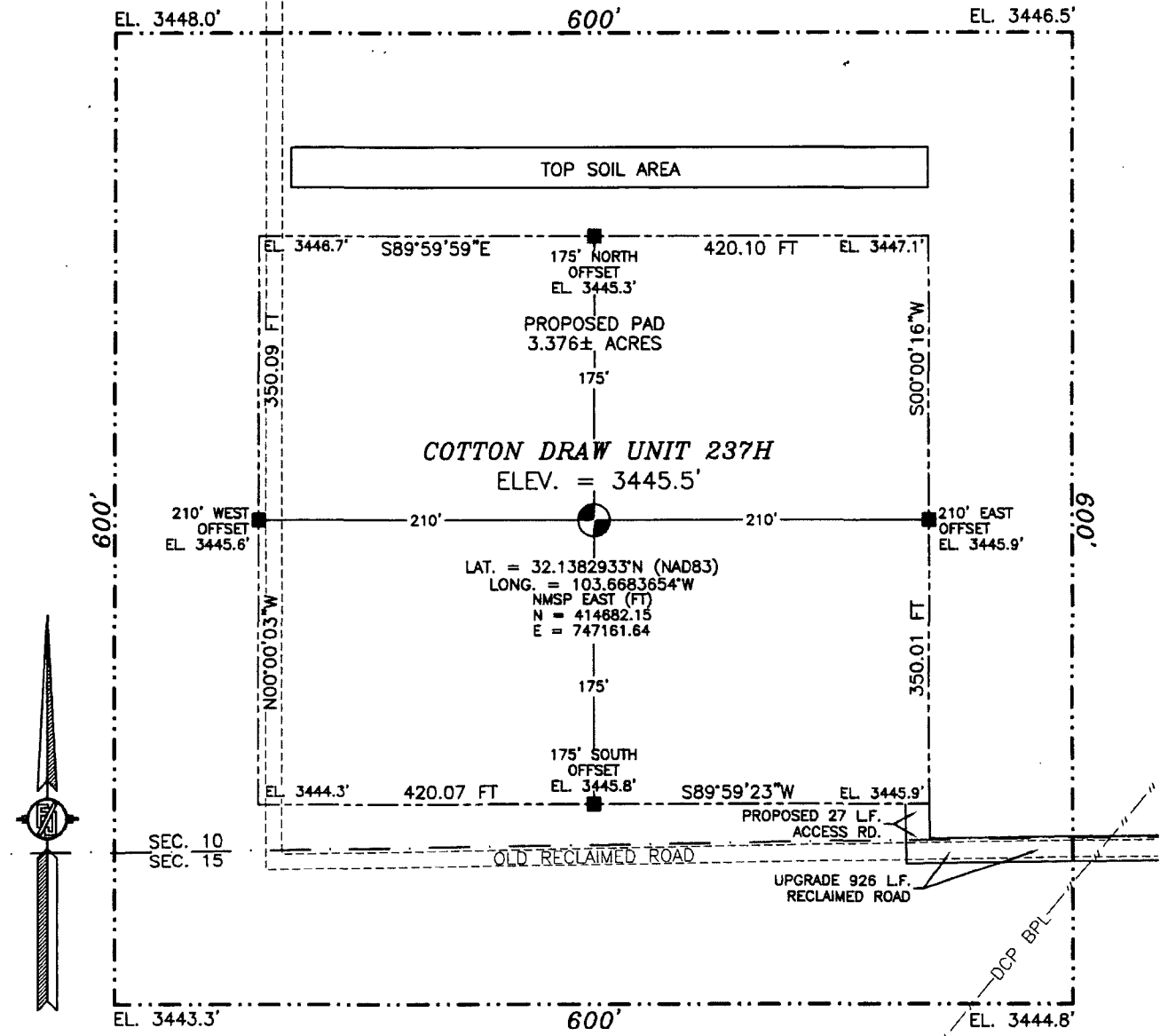


JUL 29 2014

pm.

**SECTION 10, TOWNSHIP 25 SOUTH, RANGE 32 EAST, N.M.P.M.  
LEA COUNTY, STATE OF NEW MEXICO  
SITE MAP**

NOTE: LATITUDE AND LONGITUDE COORDINATES ARE SHOWN USING THE NORTH AMERICAN DATUM OF 1983 (NAD83). LISTED NEW MEXICO STATE PLANE EAST COORDINATES ARE GRID (NAD83). BASIS OF BEARING AND DISTANCES USED ARE NEW MEXICO STATE PLANE EAST COORDINATES MODIFIED TO THE SURFACE.



010 50 100 200  
SCALE 1" = 100'

**DIRECTIONS TO LOCATION**

FROM STATE HWY. 128 AND CR. #1, GO SOUTH ON CR. #1 6.0 MILES, TURN LEFT ON CALICHE ROAD (COTTON DRAW RD.) AND GO EAST 0.4 MILES, TURN LEFT AND GO NORTH 0.4 MILES TO A PROPOSED ROAD SURVEY ON RECLAIMED ROAD AND FOLLOW FLAGS WEST 919' THEN NORTH 27' TO THE SE CORNER OF PROPOSED PAD FOR THIS LOCATION.

**DEVON ENERGY PRODUCTION COMPANY, L.P.  
COTTON DRAW UNIT 237H**

**LOCATED 200 FT. FROM THE SOUTH LINE  
AND 950 FT. FROM THE WEST LINE OF  
SECTION 10, TOWNSHIP 25 SOUTH,  
RANGE 32 EAST, N.M.P.M.  
LEA COUNTY, STATE OF NEW MEXICO**

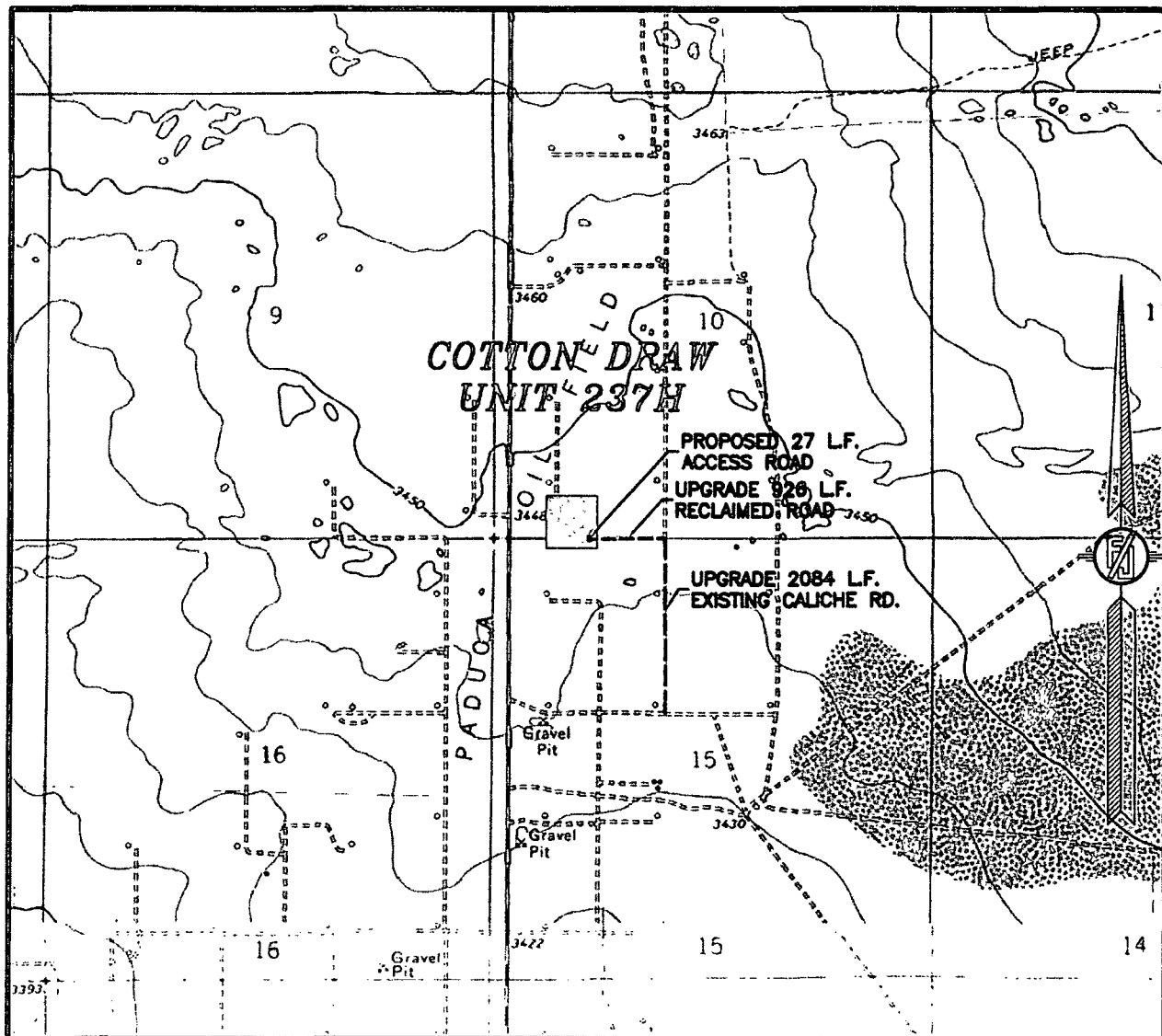
DECEMBER 12, 2013

SURVEY NO. 2140A

MADRON SURVEYING, INC. 301 SOUTH CANAL (575) 234-3341

CARLSBAD, NEW MEXICO

SECTION 10, TOWNSHIP 25 SOUTH, RANGE 32 EAST, N.M.P.M.  
LEA COUNTY, STATE OF NEW MEXICO  
LOCATION VERIFICATION MAP



USGS QUAD MAP:  
PADUCA BREAKS NW

NOT TO SCALE

DEVON ENERGY PRODUCTION COMPANY, L.P.  
COTTON DRAW UNIT 237H  
LOCATED 200 FT. FROM THE SOUTH LINE  
AND 950 FT. FROM THE WEST LINE OF  
SECTION 10, TOWNSHIP 25 SOUTH,  
RANGE 32 EAST, N.M.P.M.  
LEA COUNTY, STATE OF NEW MEXICO

DECEMBER 12, 2013

MADRON SURVEYING, INC. 301 SOUTH CANAL SURVEY NO. 2140A  
(575) 234-3341 CARLSBAD, NEW MEXICO

[illegible]

NOT TO SCALE

FROM STATE HWY. 128 AND CR. #1, GO SOUTH ON CR. #1 6.0 MILES, TURN LEFT ON CALICHE ROAD (COTTON DRAW RD.) AND GO EAST 0.4 MILES, TURN LEFT AND GO NORTH 0.4 MILES TO A PROPOSED ROAD SURVEY ON RECLAIMED ROAD AND FOLLOW FLAGS WEST 919' THEN NORTH 27' TO THE SE CORNER OF PROPOSED PAD FOR THIS LOCATION.

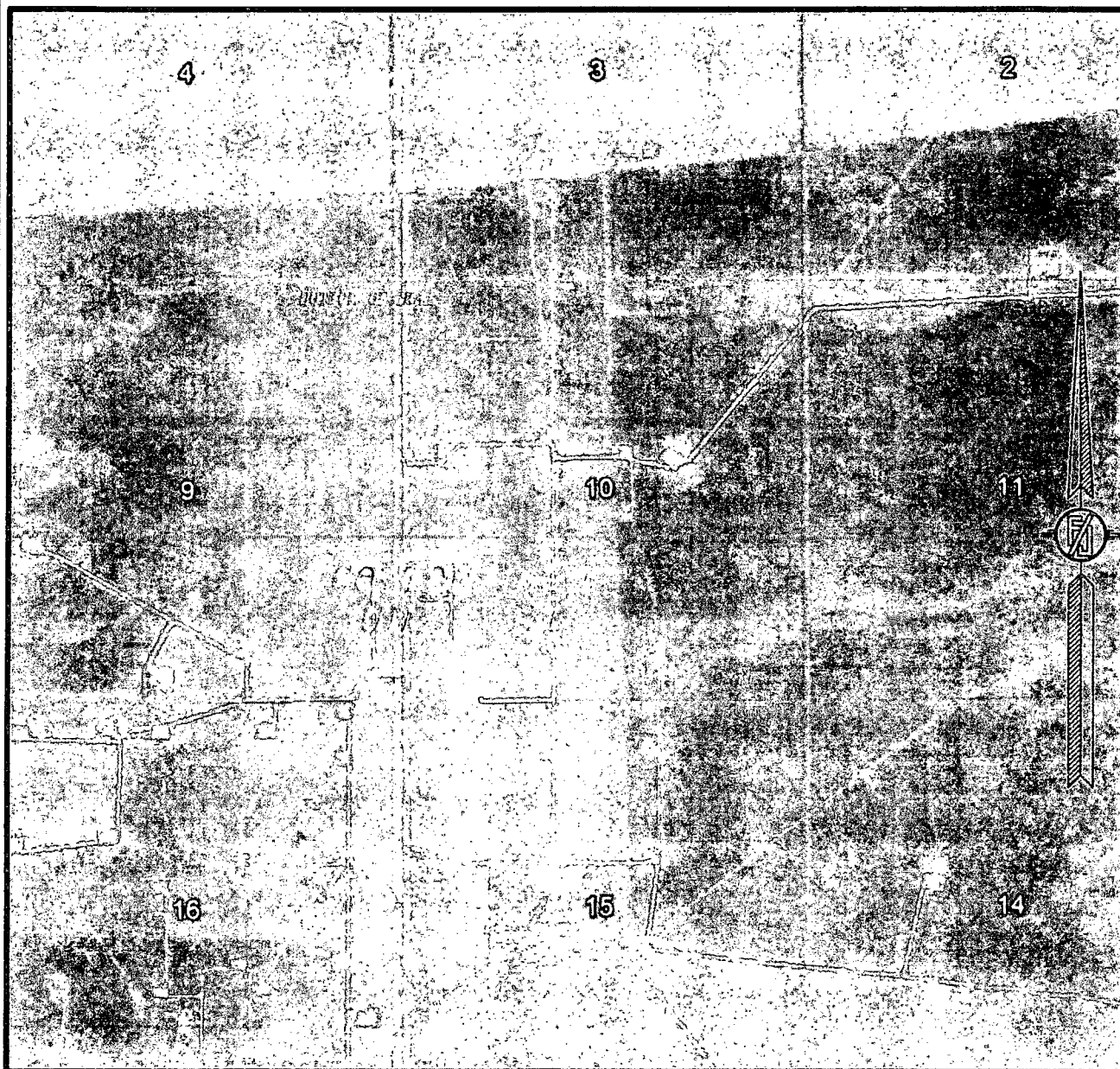
LOCATED 200 FT. FROM THE SOUTH LINE  
AND 950 FT. FROM THE WEST LINE OF  
SECTION 10, TOWNSHIP 25 SOUTH,  
RANGE 32 EAST, N.M.P.M.  
LEA COUNTY, STATE OF NEW MEXICO

DECEMBER 12, 2013

301 SOUTH CANAL  
(575) 234-3341

SURVEY NO. 2140A  
CARLSBAD, NEW MEXICO

SECTION 10, TOWNSHIP 25 SOUTH, RANGE 32 EAST, N.M.P.M.  
LEA COUNTY, STATE OF NEW MEXICO  
AERIAL PHOTO



NOT TO SCALE  
AERIAL PHOTO:  
GOOGLE EARTH  
APRIL 2013

DEVON ENERGY PRODUCTION COMPANY, L.P.  
COTTON DRAW UNIT 237H

LOCATED 200 FT. FROM THE SOUTH LINE  
AND 950 FT. FROM THE WEST LINE OF  
SECTION 10, TOWNSHIP 25 SOUTH,  
RANGE 32 EAST, N.M.P.M.  
LEA COUNTY, STATE OF NEW MEXICO

DECEMBER 12, 2013

SURVEY NO. 2140A

MADRON SURVEYING, INC. 301 SOUTH CANAL (575) 234-3341 CARLSBAD, NEW MEXICO

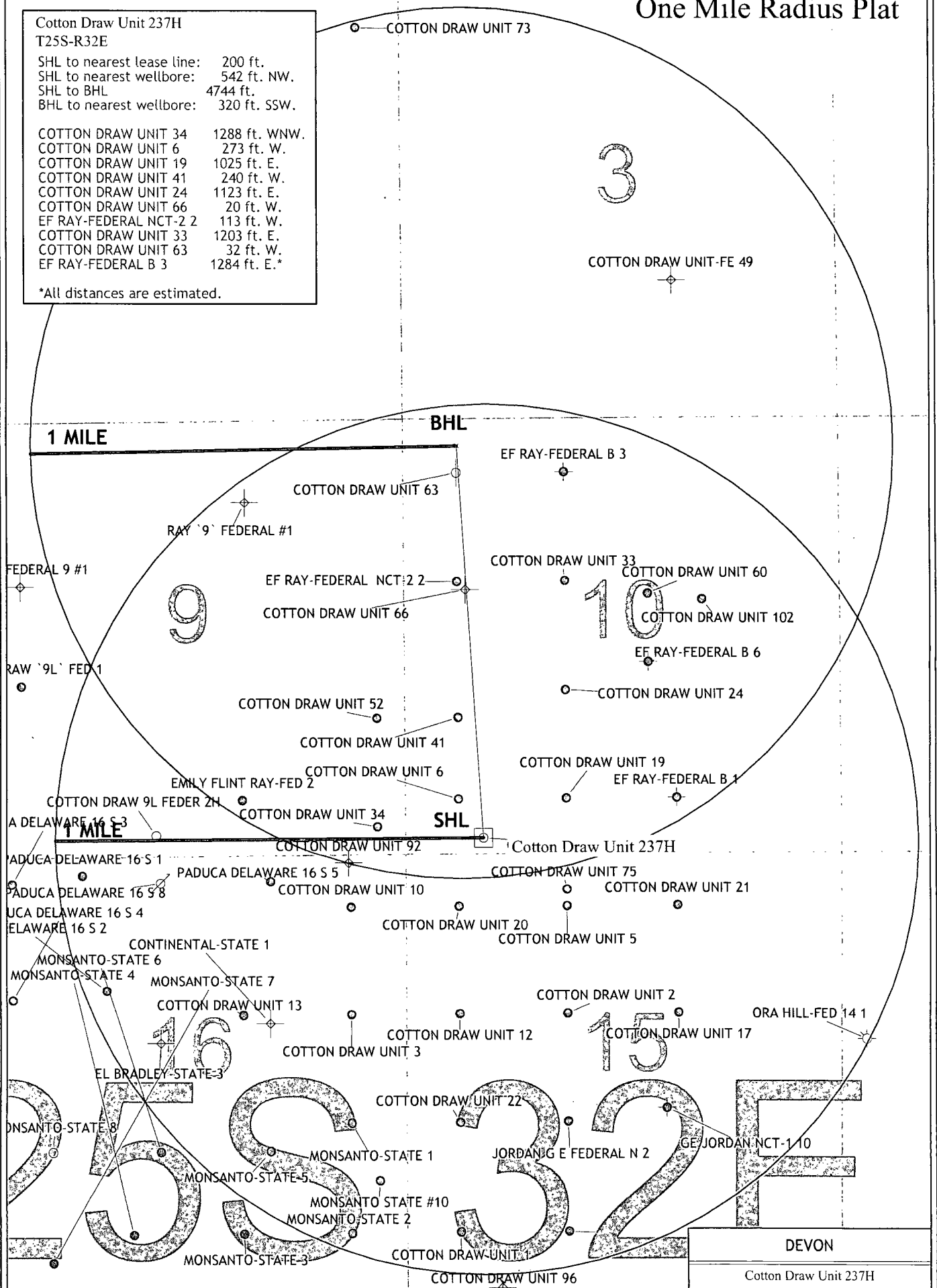
# One Mile Radius Plat

Cotton Draw Unit 237H  
T25S-R32E

SHL to nearest lease line: 200 ft.  
SHL to nearest wellbore: 542 ft. NW.  
SHL to BHL 4744 ft.  
BHL to nearest wellbore: 320 ft. SSW.

COTTON DRAW UNIT 34 1288 ft. WNW.  
COTTON DRAW UNIT 6 273 ft. W.  
COTTON DRAW UNIT 19 1025 ft. E.  
COTTON DRAW UNIT 41 240 ft. W.  
COTTON DRAW UNIT 24 1123 ft. E.  
COTTON DRAW UNIT 66 20 ft. W.  
EF RAY-FEDERAL NCT-2 2 113 ft. W.  
COTTON DRAW UNIT 33 1203 ft. E.  
COTTON DRAW UNIT 63 32 ft. W.  
EF RAY-FEDERAL B 3 1284 ft. E.\*

\*All distances are estimated.



DEVON

Cotton Draw Unit 237H