

District I  
1625 N. French Dr., Hobbs, NM 88240  
Phone: (575) 393-6161 Fax: (575) 393-0720  
District II  
811 S. First St., Artesia, NM 88210  
Phone: (575) 748-1283 Fax: (575) 748-9720  
District III  
1000 Rio Brazos Road, Aztec, NM 87410  
Phone: (505) 334-6178 Fax: (505) 334-6170  
District IV  
1220 S. St. Francis Dr., Santa Fe, NM 87505  
Phone: (505) 476-3460 Fax: (505) 476-3462

State of New Mexico  
Energy, Minerals & Natural Resources Department  
**OIL CONSERVATION DIVISION**  
1220 South St. Francis Dr.  
Santa Fe, NM 87505

Form C-102  
Revised August 1, 2011  
Submit one copy to appropriate  
District Office

☐ AMENDED REPORT

AUG 05 2014

RECEIVED

WELL LOCATION AND ACREAGE DEDICATION PLAT

30-025- <sup>1</sup> API Number <b>42016</b>	<sup>2</sup> Pool Code 57380	Skaggs; Grayburg	<sup>3</sup> Pool Name
<sup>4</sup> Property Code <b>31670</b>	<sup>5</sup> Property Name SEMU		<sup>6</sup> Well Number 244
<sup>7</sup> OGRID No. 217817	<sup>8</sup> Operator Name ConocoPhillips Company		<sup>9</sup> Elevation 3534'

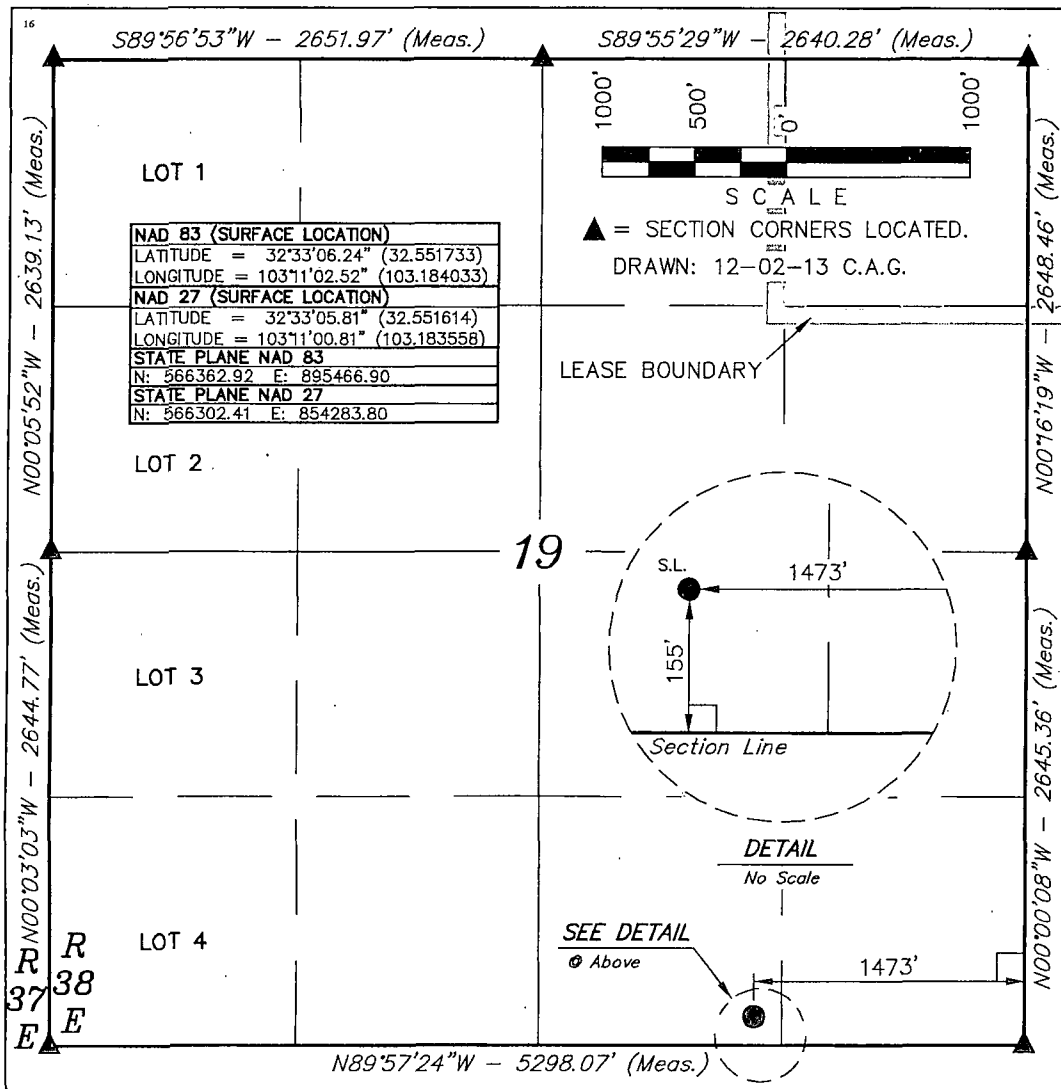
<sup>10</sup>Surface Location

UL or lot no.	Section	Township	Range	Lot Idn	Feet from the	North/South line	Feet from the	East/West line	County
O	19	20 S	38 E		155	SOUTH	1473	EAST	LEA

<sup>11</sup>Bottom Hole Location If Different From Surface

UL or lot no.	Section	Township	Range	Lot Idn	Feet from the	North/South line	Feet from the	East/West line	County
<sup>12</sup> Dedicated Acres 40	<sup>13</sup> Joint or Infill	<sup>14</sup> Consolidation Code	<sup>15</sup> Order No.						

No allowable will be assigned to this completion until all interests have been consolidated or a non-standard unit has been approved by the division.



<sup>17</sup>OPERATOR  
CERTIFICATION

I hereby certify that the information contained herein is true and complete to the best of my knowledge and belief, and that this organization either owns a working interest or unleased mineral interest in the land including the proposed bottom hole location or has a right to drill this well at this location pursuant to a contract with an owner of such a mineral or working interest, or to a voluntary pooling agreement or a compulsory pooling order heretofore entered by the division.

*Susan B. Maunder* 11/6/14  
Signature Date

Susan B. Maunder

Printed Name

Susan.B.Maunder@conocophillips.com

E-mail Address

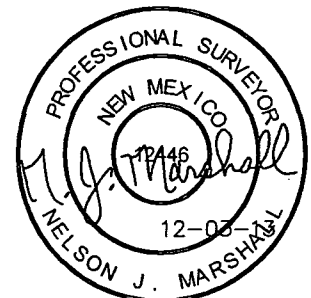
<sup>18</sup>SURVEYOR  
CERTIFICATION

I hereby certify that the well location shown on this plat was plotted from field notes of actual surveys made by me or under my supervision, and that the same is true and correct to the best of my belief.

September 11, 2013

Date of Survey

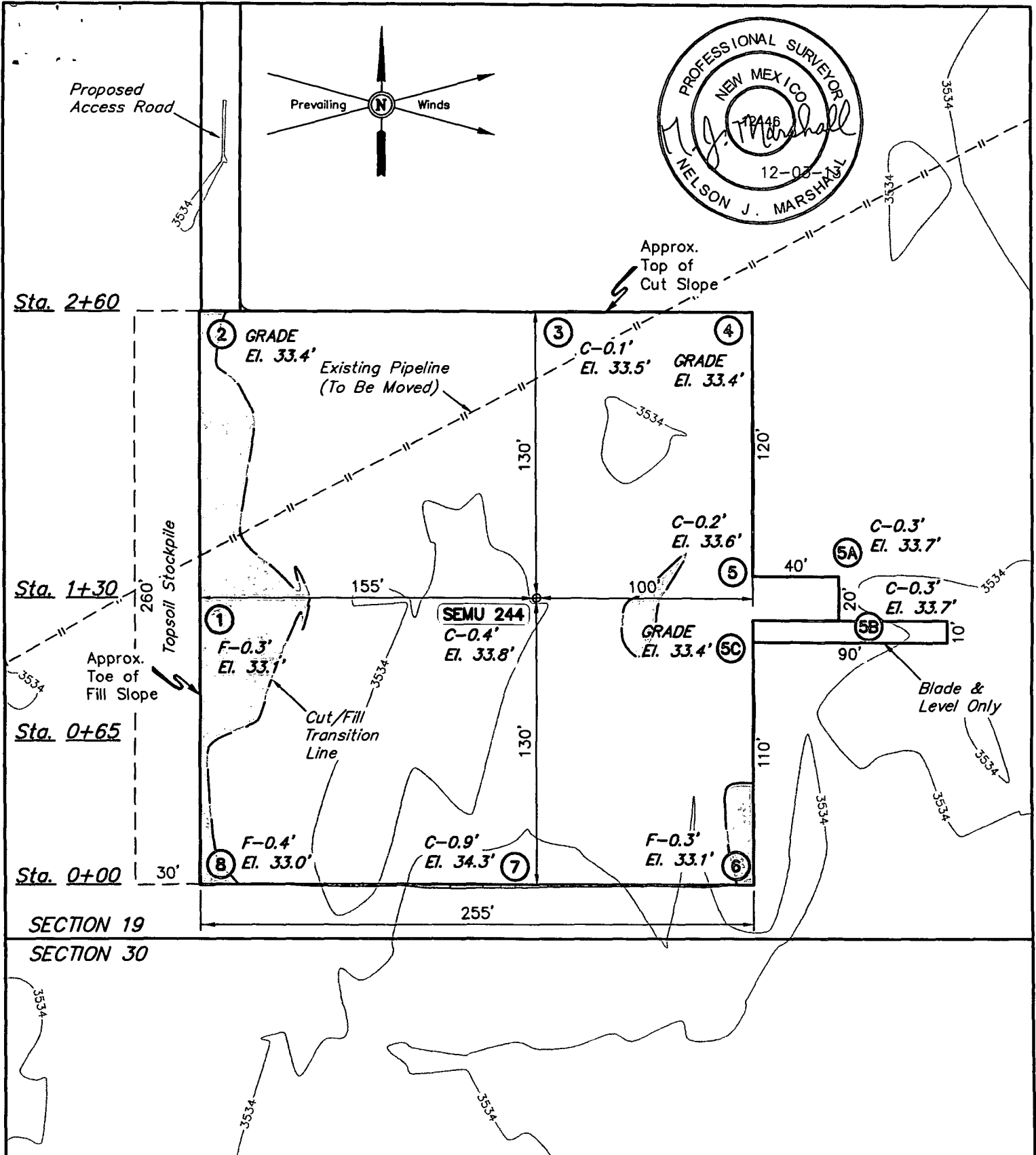
Signature and Seal of Professional Surveyor:



Certificate Number:

AUG 07 2014

Pm.



ELEV. UNGRADED GROUND AT LOC. STAKE = 3533.8' FINISHED GRADE ELEV. AT LOC. STAKE = 3533.4'

**NOTES:**

- Flare pit is to be located a min. of 100' from the well head.
- Construct diversion ditches as needed.
- Underground utilities shown on this sheet are for visualization purposes only, actual locations to be determined prior to construction.

ConocoPhillips

**ConocoPhillips Company**

**SEMU 244**  
**SECTION 19, T20S, R38E, N.M.P.M.**  
**155' FSL 1473' FEL**

DRAWN BY: J.W.

SCALE: 1" = 60'

DATE: 09-17-13

REV: 12-02-13 C.A.G.

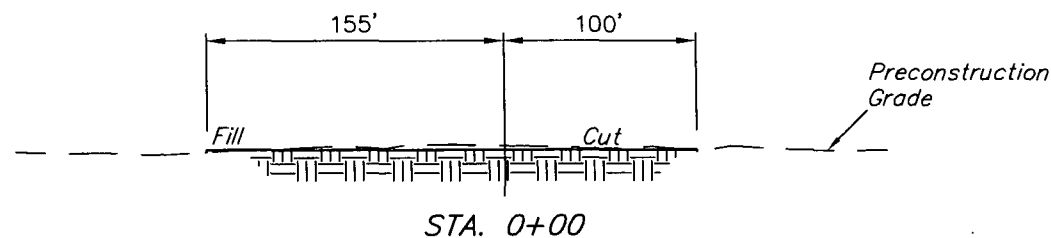
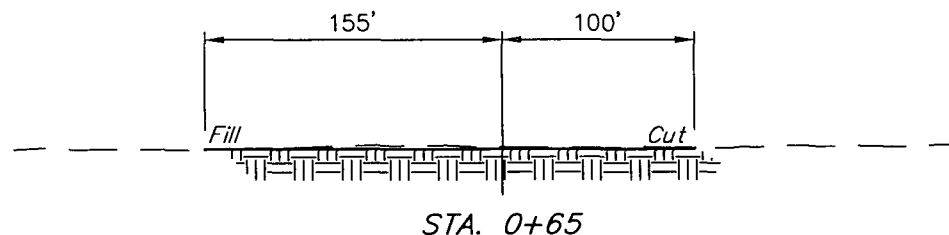
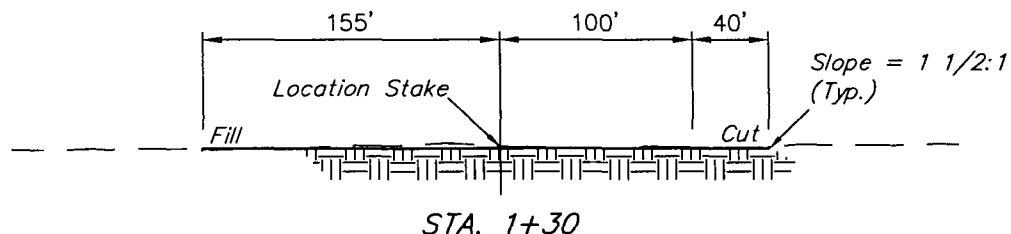
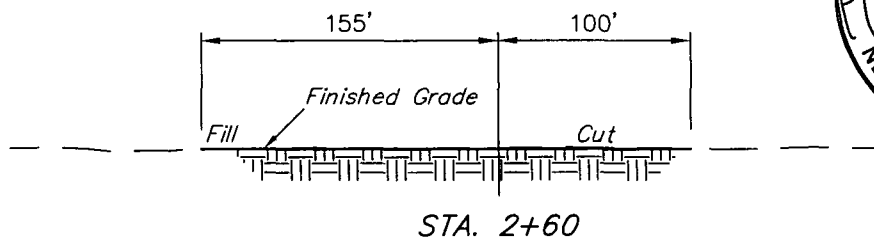


Corporate Office \* 85 South 200 East  
Vernal, UT 84078 \* (435) 789-1017

**LOCATION LAYOUT**

**FIGURE #1**

1" = 40'  
X-Section  
Scale  
1" = 100'



APPROXIMATE EARTHWORK QUANTITIES		APPROXIMATE SURFACE DISTURBANCE AREAS		
(4") TOPSOIL STRIPPING	830 Cu. Yds.		DISTANCE	ACRES
REMAINING LOCATION	250 Cu. Yds.	WELL SITE DISTURBANCE	NA	±1.729
TOTAL CUT	1,080 Cu. Yds.	20' WIDE ACCESS ROAD R-O-W DISTURBANCE	±331.67'	±0.152
FILL	250 Cu. Yds.	6' WIDE PIPELINE R-O-W DISTURBANCE	±4,044.19'	±0.557
EXCESS MATERIAL	830 Cu. Yds.	10' WIDE POWER LINE R-O-W DISTURBANCE	±311.55'	±0.072
TOPSOIL	830 Cu. Yds.	TOTAL SURFACE USE AREA	±4,687.41'	±2.510
EXCESS UNBALANCE (After Interim Rehabilitation)	0 Cu. Yds.			

NOTES:

- Fill quantity includes 5% for compaction.
- Topsoil should not be stripped below finished grade on substructure area.

ConocoPhillips

ConocoPhillips Company

SEMU 244  
SECTION 19, T20S, R38E, N.M.P.M.  
155' FSL 1473' FEL

DRAWN BY: J.W.

SCALE: AS SHOWN

DATE: 09-17-13

REVISED:

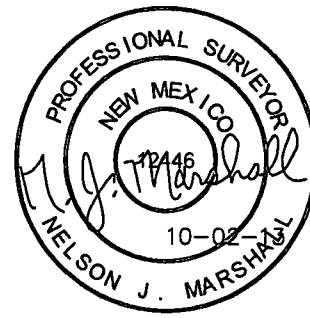
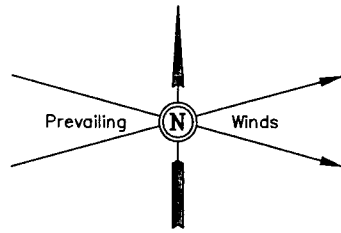


Corporate Office \* 85 South 200 East  
Vernal, UT 84078 \* (435) 789-1017

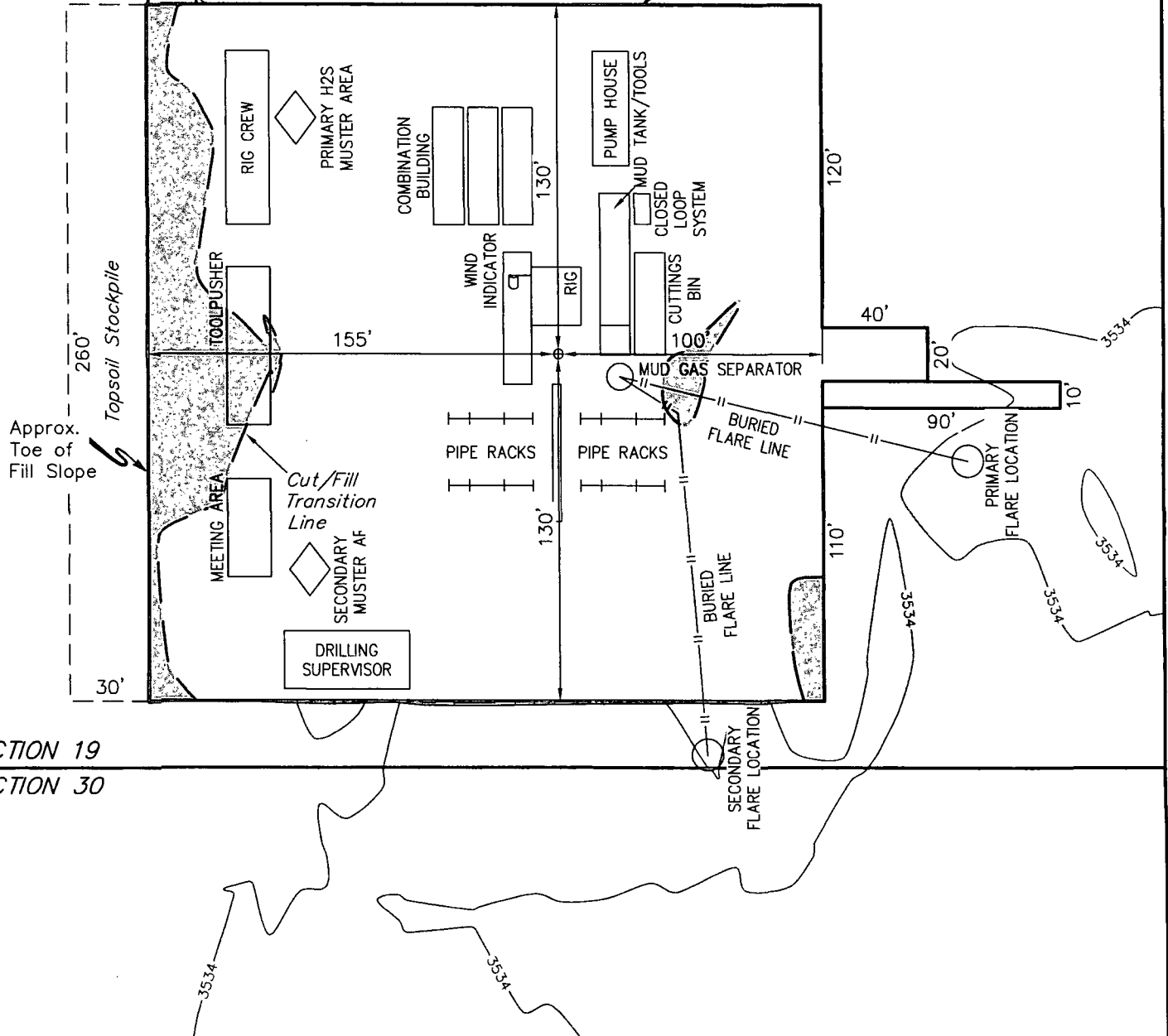
TYPICAL CROSS SECTIONS

FIGURE #2

Proposed Access Road



Approx.  
Top of  
Cut Slope



**NOTES:**

- Flare pit is to be located a min. of 160' from the well head.

ConocoPhillips

**ConocoPhillips Company**

SEMU 244  
SECTION 19, T20S, R38E, N.M.P.M.  
155' FSL 1473' FEL

DRAWN BY: J.W.

SCALE: 1" = 60'

DATE: 09-17-13

REVISED:

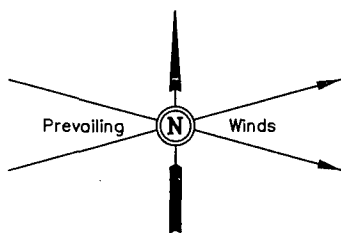


Corporate Office \* 85 South 200 East  
Vernal, UT 84078 \* (435) 789-1017

**TYPICAL RIG LAYOUT**

**FIGURE #3**

Access Road



Approx.  
Top of  
Cut Slope

APPROXIMATE ACREAGE  
UN-RECLAIMED = ± 0.942 ACRES

Well Head ○

Approx.  
Toe of  
Fill Slope

Topsoil Stockpile

Cut/Fill  
Transition  
Line

SECTION 19

SECTION 30

LEGEND:

Reclaimed Area

NOTES:

ConocoPhillips

ConocoPhillips Company

SEMU 244  
SECTION 19, T20S, R38E, N.M.P.M.  
155' FSL 1473' FEL

DRAWN BY: J.W.

SCALE: 1" = 60'

DATE: 09-17-13

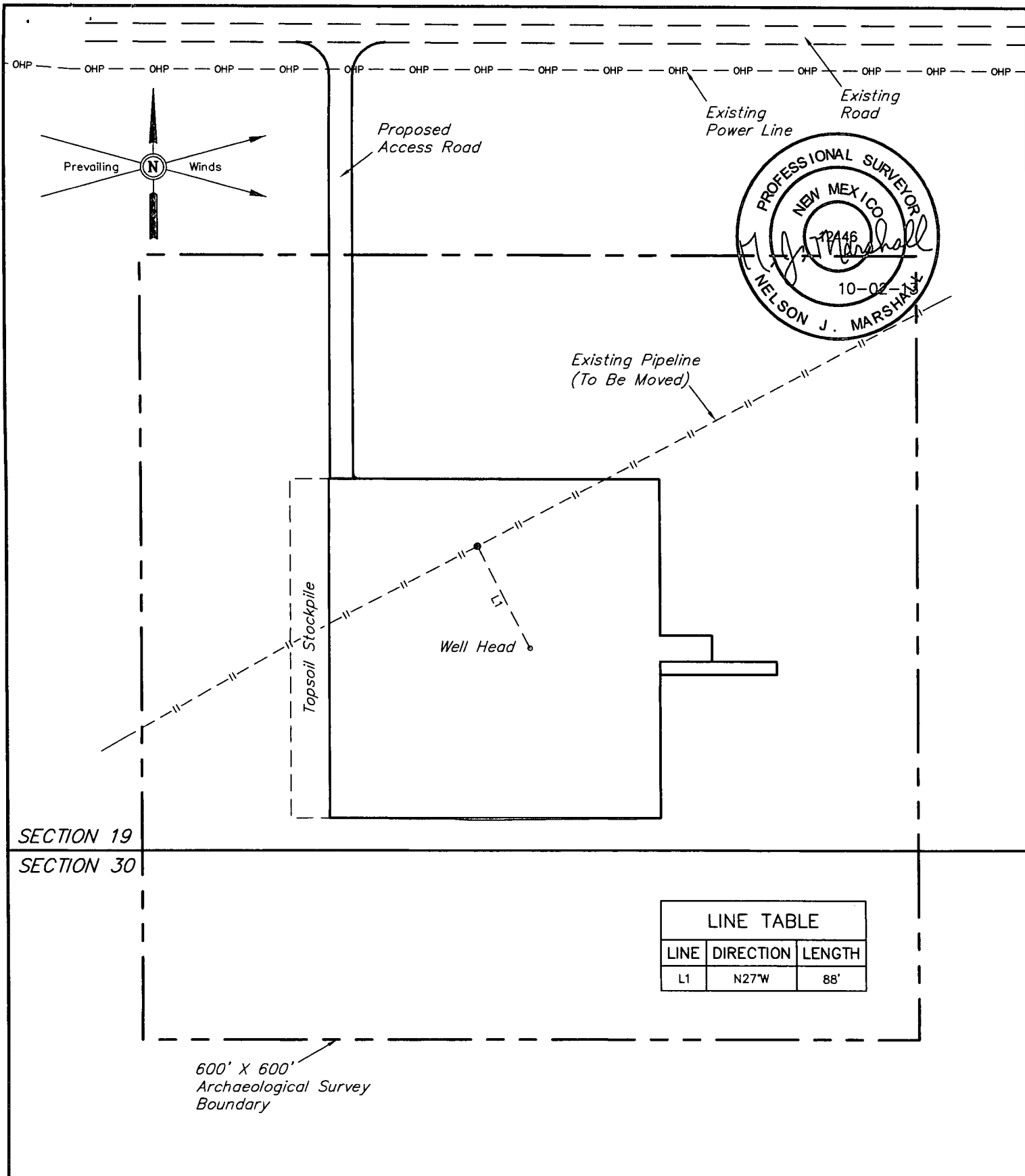
REVISED:



Corporate Office \* 85 South 200 East  
Vernal, UT 84078 \* (435) 789-1017

RECLAMATION DIAGRAM

FIGURE #4



NOTES:

ConocoPhillips

**ConocoPhillips Company**

SEM U 244  
SECTION 19, T20S, R38E, N.M.P.M.  
155' FSL 1473' FEL

DRAWN BY: J.W.

SCALE: 1" = 100'

DATE: 09-17-13

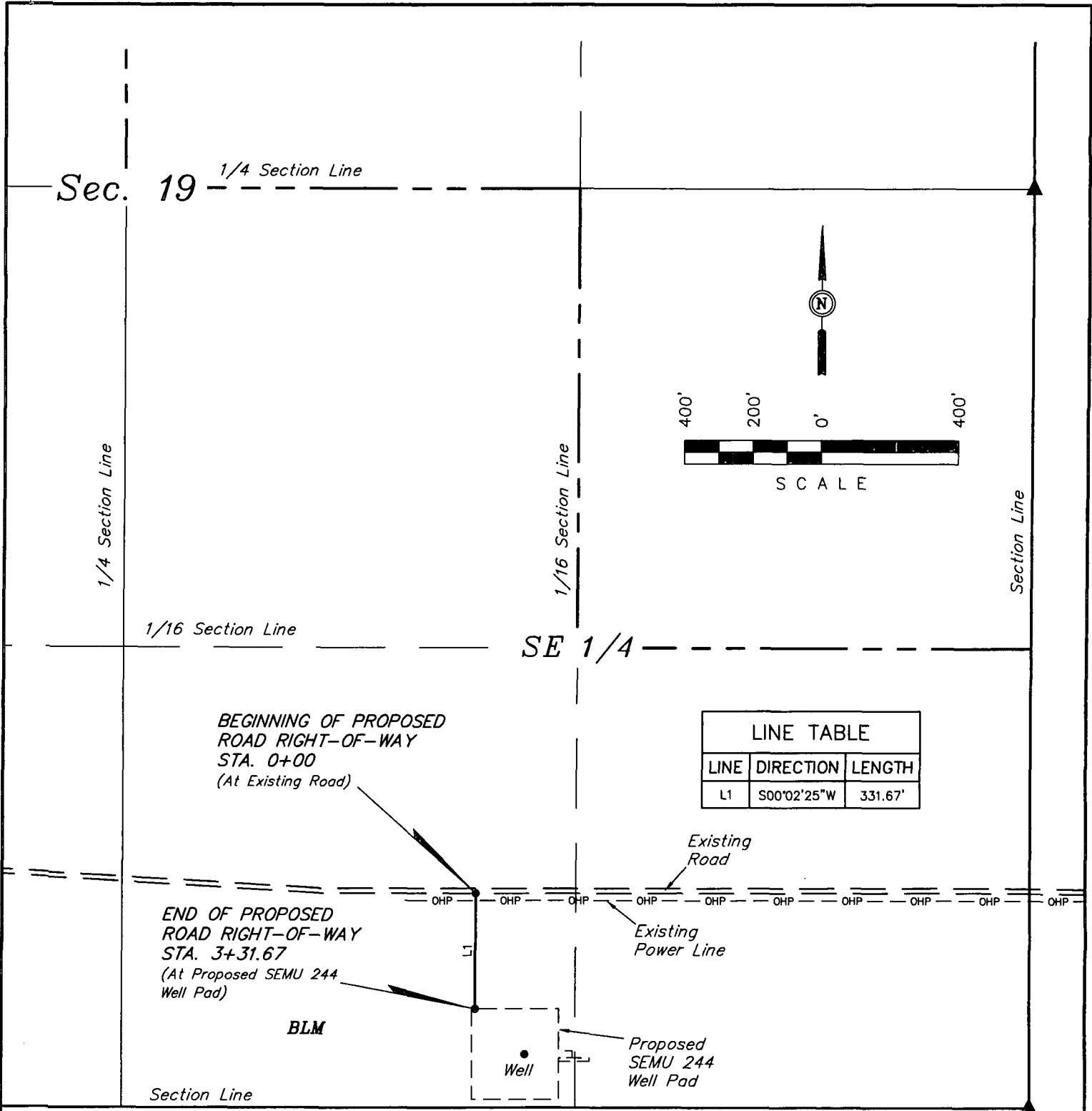
REVISED:

ARCHAEOLOGICAL SURVEY  
BOUNDARY

FIGURE #5



Corporate Office \* 85 South 200 East  
Vernal, UT 84078 \* (435) 789-1017



ROAD RIGHT-OF-WAY DESCRIPTION

A 20' WIDE RIGHT-OF-WAY 10' ON EACH SIDE OF THE FOLLOWING DESCRIBED CENTERLINE.

BEGINNING AT A POINT IN THE SW 1/4 SE 1/4 OF SECTION 19, T20S, R38E, N.M.P.M., WHICH BEARS N69°05'40"W 1731.70' FROM THE SOUTHEAST CORNER OF SAID SECTION 19, THENCE S00°02'25"W 331.67' TO A POINT IN THE SW 1/4 SE 1/4 OF SAID SECTION 19, WHICH BEARS N79°58'01"W 1643.06' FROM THE SOUTHEAST CORNER OF SAID SECTION 19. THE SIDE LINES OF SAID DESCRIBED RIGHT-OF-WAY BEING SHORTENED OR ELONGATED TO MEET THE GRANTOR'S PROPERTY LINES. BASIS OF BEARINGS IS A G.P.S. OBSERVATION. CONTAINS 0.152 ACRES MORE OR LESS.

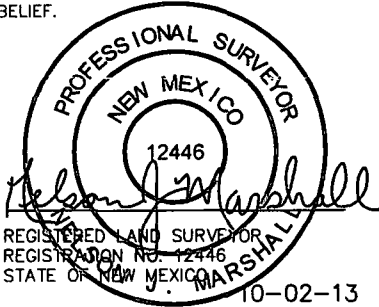
▲ = SECTION CORNERS LOCATED.

BEGINNING OF ROAD STA. 0+00 BEARS N69°05'40"W 1731.70' FROM THE SOUTHEAST CORNER OF SECTION 19, T20S, R38E, N.M.P.M.

END OF ROAD STA. 3+31.67 BEARS N79°58'01"W 1643.06' FROM THE SOUTHEAST CORNER OF SECTION 19, T20S, R38E, N.M.P.M.

CERTIFICATE

THIS IS TO CERTIFY THAT THE ABOVE PLAT WAS PREPARED FROM FIELD NOTES OF ACTUAL SURVEYS MADE BY ME OR UNDER MY SUPERVISION AND THAT THE SAME ARE TRUE AND CORRECT TO THE BEST OF MY KNOWLEDGE AND BELIEF.



RIGHT-OF-WAY LENGTHS			
PROPERTY OWNER	FEET	ACRES	RODS
BLM	331.67	0.152	20.10

NOTES:  
• The maximum grade of existing ground for the proposed access road is ±1%.

ConocoPhillips

ConocoPhillips Company

SEMU 244  
SECTION 19, T20S, R38E, N.M.P.M.  
155' FSL 1473' FEL

DRAWN BY: J.W.      SCALE: 1" = 400'

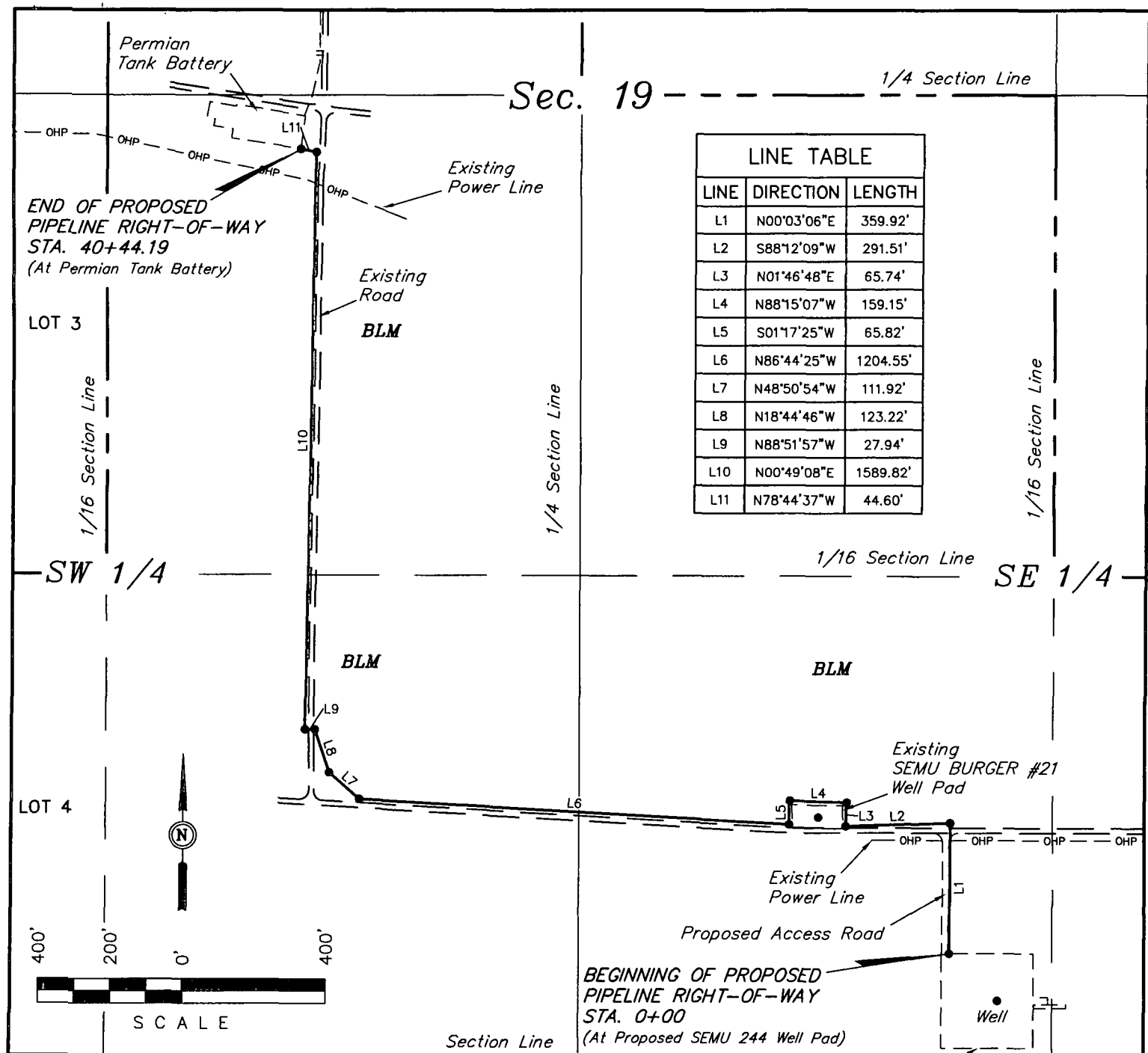
DATE: 09-17-13      REVISED:

ACCESS ROAD R-O-W

FIGURE #6



Corporate Office \* 85 South 200 East  
Vernal, UT 84078 \* (435) 789-1017



### PIPELINE RIGHT-OF-WAY DESCRIPTION

A 6' WIDE RIGHT-OF-WAY 3' ON EACH SIDE OF THE FOLLOWING DESCRIBED CENTERLINE.

BEGINNING AT A POINT IN THE SW 1/4 SE 1/4 OF SECTION 19, T20S, R38E, N.M.P.M., WHICH BEARS N79°53'43"W 1631.23' FROM THE SOUTHEAST CORNER OF SAID SECTION 19, THENCE N00°03'06"E 359.92'; THENCE S88°12'09"W 291.51'; THENCE N01°46'48"E 65.74'; THENCE N88°15'07"W 159.15'; THENCE S01°17'25"W 65.82'; THENCE N86°44'25"W 1204.55'; THENCE N48°50'54"W 111.92'; THENCE N18°44'46"W 123.22'; THENCE N88°51'57"W 27.94'; THENCE N00°49'08"E 1589.82'; THENCE N78°44'37"W 44.60' TO A POINT IN THE NE 1/4 SW 1/4 OF SAID SECTION 19, WHICH BEARS S85°26'01"E 1875.44' FROM THE WEST 1/4 CORNER OF SAID SECTION 19. THE SIDE LINES OF SAID DESCRIBED RIGHT-OF-WAY BEING SHORTENED OR ELONGATED TO MEET THE GRANTOR'S PROPERTY LINES. BASIS OF BEARINGS IS A G.P.S. OBSERVATION. CONTAINS 0.557 ACRES MORE OR LESS.

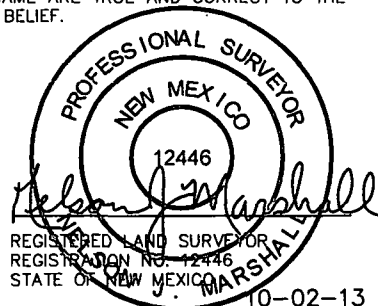
BEGINNING OF PIPELINE STA. 0+00 BEARS N79°53'43"W 1631.23' FROM THE SOUTHEAST CORNER OF SECTION 19, T20S, R38E, N.M.P.M.

END OF PIPELINE STA. 40+44.19 BEARS S85°26'01"E 1875.44' FROM THE WEST 1/4 CORNER OF SECTION 19, T20S, R38E, N.M.P.M.

▲ = SECTION CORNERS LOCATED.

### CERTIFICATE

THIS IS TO CERTIFY THAT THE ABOVE PLAT WAS PREPARED FROM FIELD NOTES OF ACTUAL SURVEYS MADE BY ME OR UNDER MY SUPERVISION AND THAT THE SAME ARE TRUE AND CORRECT TO THE BEST OF MY KNOWLEDGE AND BELIEF.



### RIGHT-OF-WAY LENGTHS

PROPERTY OWNER	FEET	ACRES	RODS
BLM SE 1/4	2486.73	0.342	150.71
BLM SW 1/4	1557.46	0.215	94.39
TOTAL	4044.19	0.557	245.10

### NOTES:

ConocoPhillips

ConocoPhillips Company

SEMU 244  
SECTION 19, T20S, R38E, N.M.P.M.  
155' FSL 1473' FEL

DRAWN BY: J.W.

SCALE: 1" = 400'

DATE: 09-17-13

REVISED:

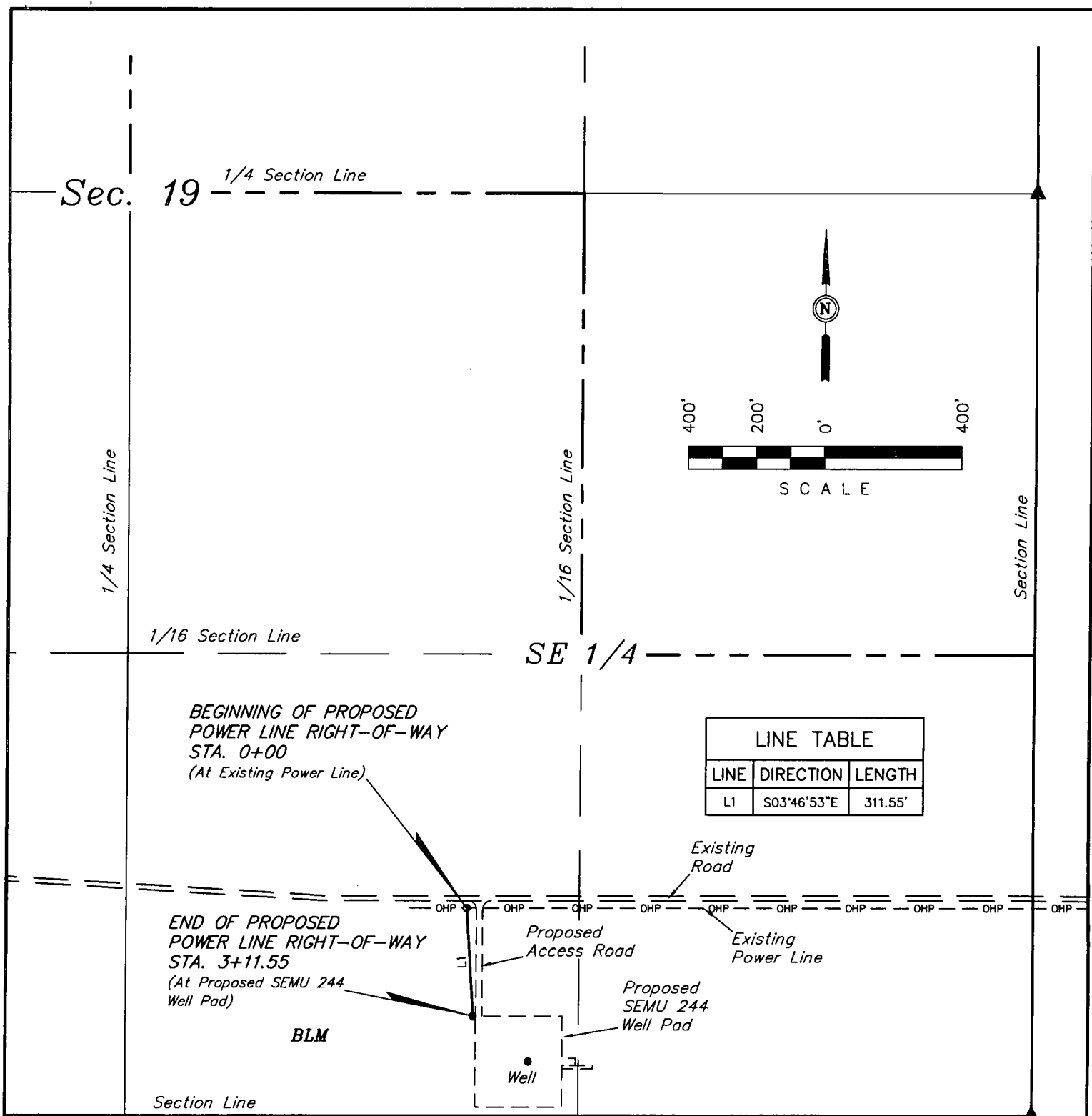


Corporate Office \* 85 South 200 East  
Vernal, UT 84078 \* (435) 789-1017

PIPELINE R-O-W

FIGURE #7

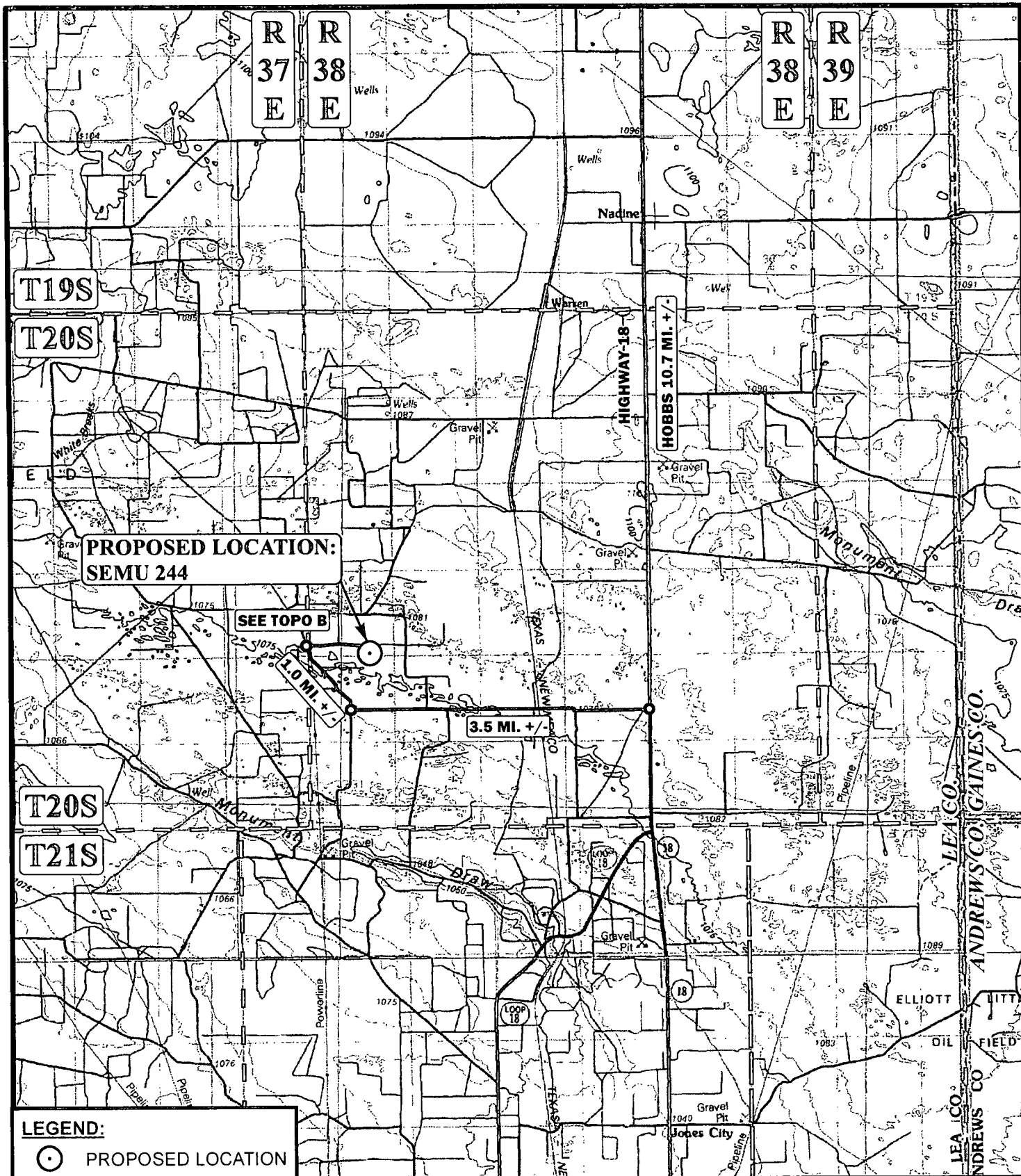




**ConocoPhillips Company**  
**SEMU 244**  
**SECTION 19, T20S, R38E, N.M.P.M.**

BEGINNING AT THE INTERSECTION OF U.S. HIGHWAY 62/U.S. HIGHWAY 180 AND HIGHWAY 18, PROCEED IN A SOUTHERLY DIRECTION FROM HOBBS, NEW MEXICO ALONG HIGHWAY 18 APPROXIMATELY 10.7 MILES TO THE JUNCTION OF THIS ROAD AND AN EXISTING ROAD TO THE WEST; TURN RIGHT AND PROCEED IN A WESTERLY DIRECTION APPROXIMATELY 3.5 MILES TO THE JUNCTION OF THIS ROAD AND AN EXISTING ROAD TO THE NORTH; TURN RIGHT AND PROCEED IN A NORTHERLY, THEN NORTHWESTERLY DIRECTION APPROXIMATELY 1.0 MILES TO THE JUNCTION OF THIS ROAD AND AN EXISTING ROAD TO THE EAST; TURN RIGHT AND PROCEED IN AN EASTERLY DIRECTION APPROXIMATELY 0.7 MILES TO THE BEGINNING OF THE PROPOSED ACCESS TO THE SOUTH; FOLLOW ROAD FLAGS IN A SOUTHERLY DIRECTION APPROXIMATELY 332' TO THE PROPOSED LOCATION.

TOTAL DISTANCE FROM HOBBS, NEW MEXICO TO THE PROPOSED LOCATION IS APPROXIMATELY 16.0 MILES.



**LEGEND:**



PROPOSED LOCATION

SCALE: 1:100,000

REVISED:

DRAWN BY: J.L.H.

DATE DRAWN: 09-18-13



Corporate Office \* 85 South 200 East  
Vernal, UT 84078 \* (435) 789-1017



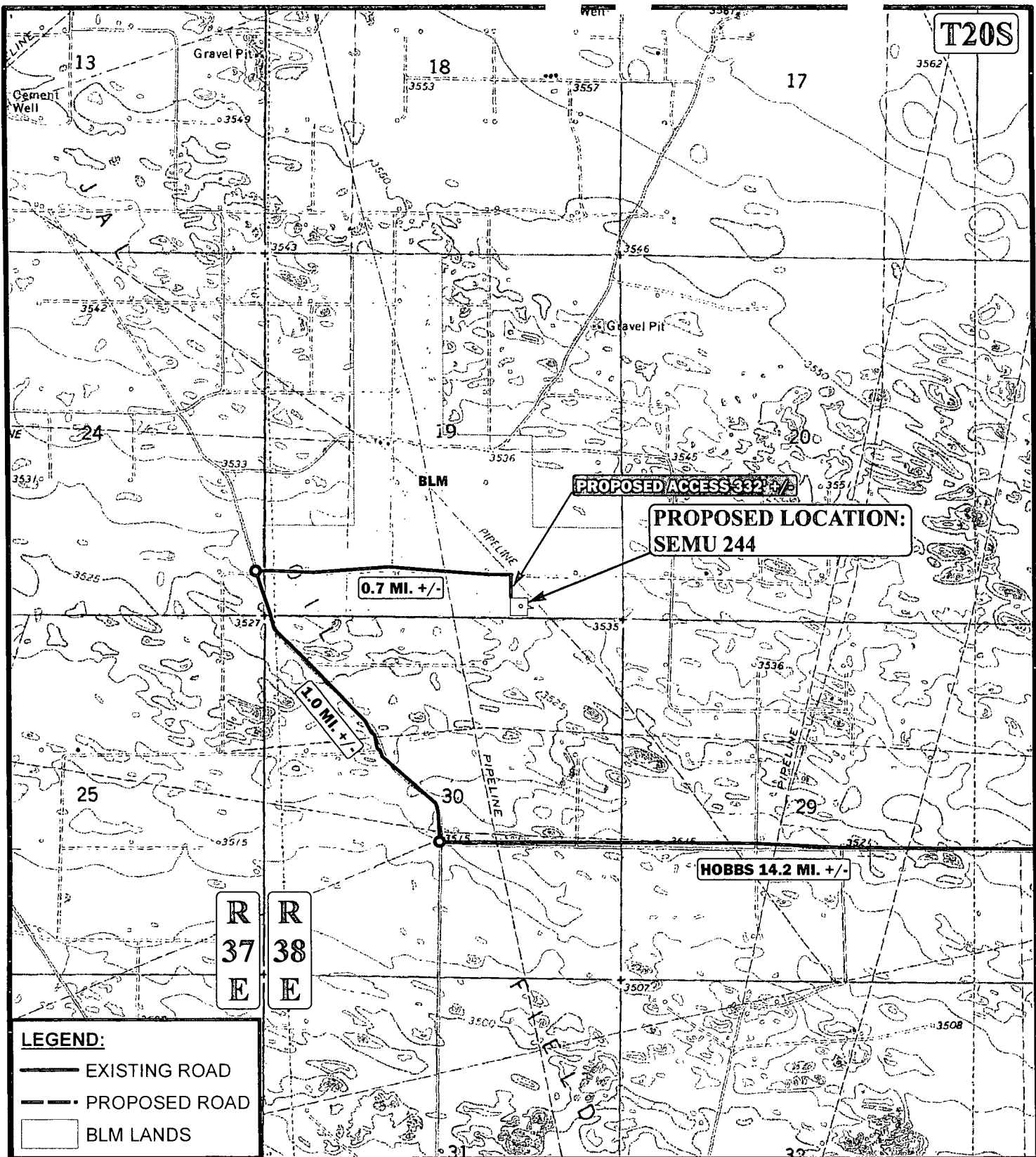
ConocoPhillips

**ConocoPhillips Company**

SEMU 244  
SECTION 19, T20S, R38E, N.M.P.M.  
155' FSL 1473' FEL

**ACCESS ROAD MAP**

**TOPO A**



**LEGEND:**

- EXISTING ROAD
- - - PROPOSED ROAD
- BLM LANDS

\*PARCEL DATA SHOWN HAS BEEN OBTAINED FROM VARIOUS SOURCES AND SHOULD BE USED FOR MAPPING, GRAPHIC AND PLANNING PURPOSES ONLY. NO WARRANTY IS MADE BY UINTEH ENGINEERING & LAND SURVEYING (UELS) FOR ACCURACY OF THE PARCEL DATA.

SCALE: 1" = 2000'

REVISED:

DRAWN BY: J.L.H.

DATE DRAWN: 09-18-13



ConocoPhillips

**ConocoPhillips Company**

SEM U 244  
SECTION 19, T20S, R38E, N.M.P.M.  
155' FSL 1473' FEL

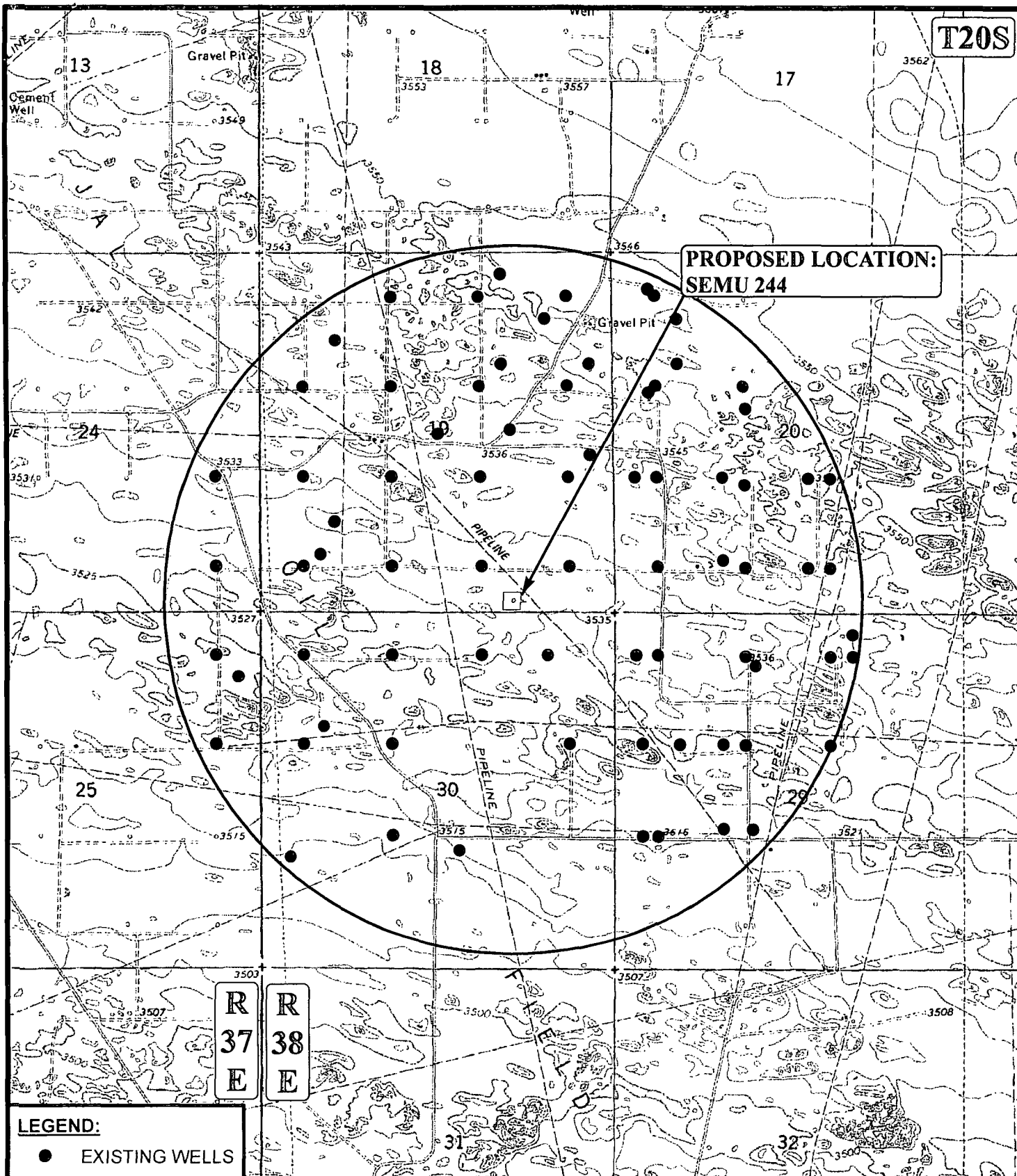


Corporate Office \* 85 South 200 East  
Vernal, UT 84078 \* (435) 789-1017

**ACCESS ROAD MAP**

TOPO B

T20S



**LEGEND:**

- EXISTING WELLS

R  
37  
E

R  
38  
E

SCALE: 1" = 2000'	REVISED:	
DRAWN BY: J.L.H.		
DATE DRAWN: 09-18-13		



ConocoPhillips

ConocoPhillips Company

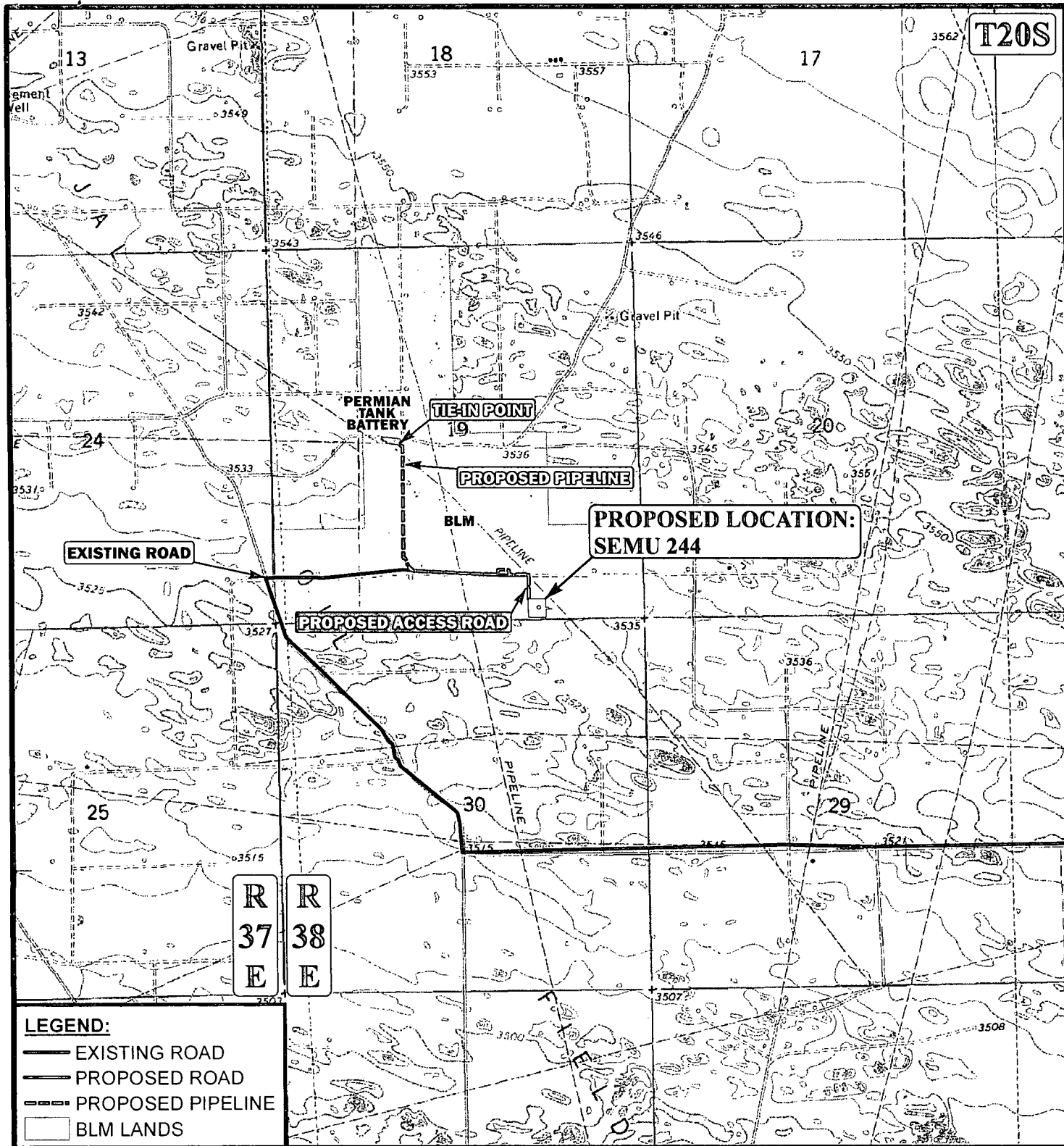
SEMU 244  
SECTION 19, T20S, R38E, N.M.P.M.  
155' FSL 1473' FEL



Corporate Office \* 85 South 200 East  
Vernal, UT 84078 \* (435) 789-1017

**TOPOGRAPHIC MAP**

TOPO C



# **LEGEND:**

- EXISTING ROAD
- PROPOSED ROAD
- PROPOSED PIPELINE
- BLM LANDS

**APPROXIMATE TOTAL PIPELINE DISTANCE 4,044' +/-**

\*PARCEL DATA SHOWN HAS BEEN OBTAINED FROM VARIOUS SOURCES AND SHOULD BE USED FOR MAPPING, GRAPHIC AND PLANNING PURPOSES ONLY. NO WARRANTY IS MADE BY UTAH ENGINEERING & LAND SURVEYING (UELS) FOR ACCURACY OF THE PARCEL DATA.

SCALE: 1" = 2000'  
 DRAWN BY: J.L.H.  
 DATE DRAWN: 09-18-13

REVISED:



ConocoPhillips

**ConocoPhillips Company**

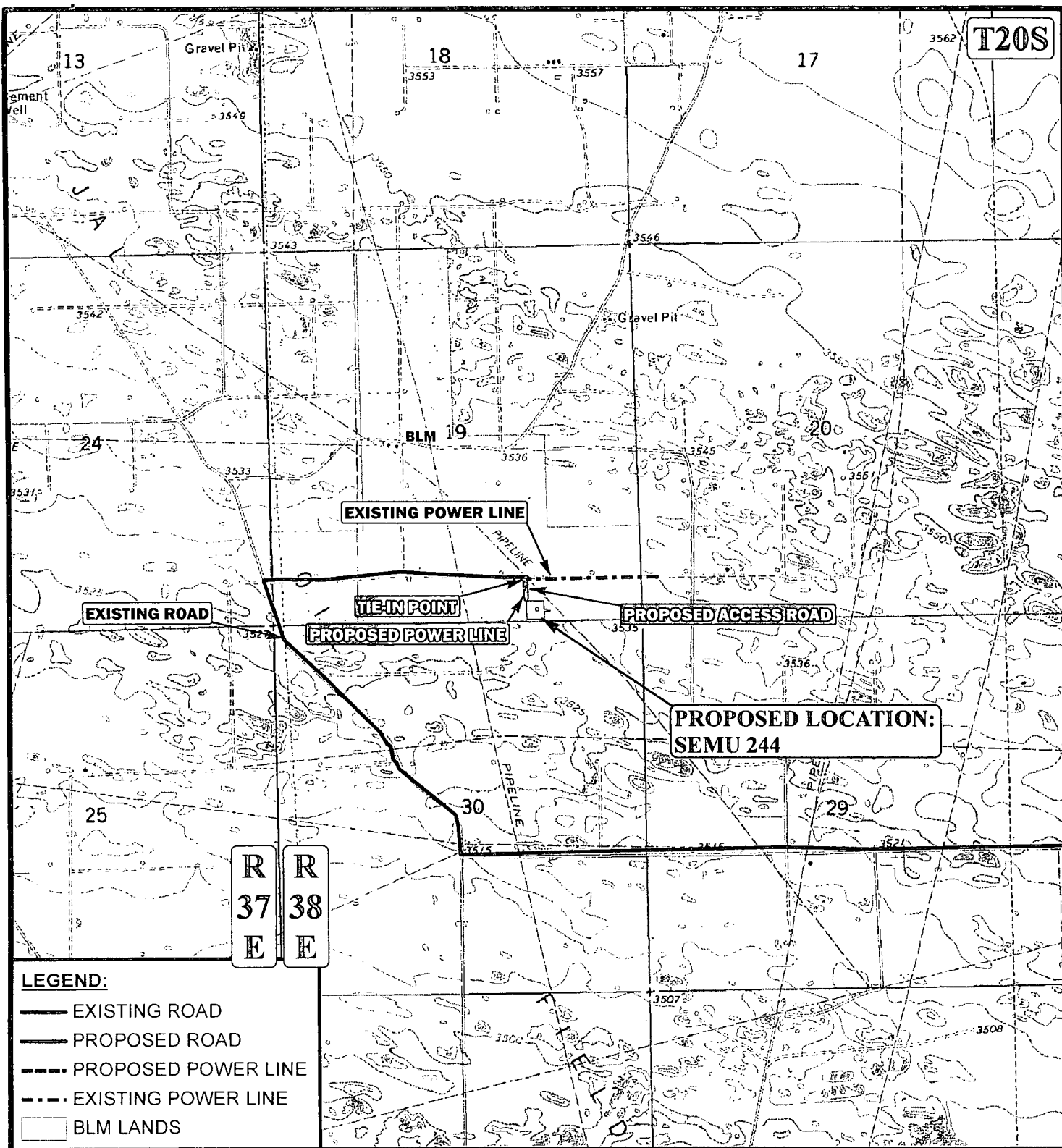
SEM U 244  
 SECTION 19, T20S, R38E, N.M.P.M.  
 155' FSL 1473' FEL



Corporate Office \* 85 South 200 East  
 Vernal, UT 84078 \* (435) 789-1017

**PIPELINE MAP**

TOPO D



**APPROXIMATE TOTAL POWER LINE DISTANCE 312' +/-**

\*PARCEL DATA SHOWN HAS BEEN OBTAINED FROM VARIOUS SOURCES AND SHOULD BE USED FOR MAPPING, GRAPHIC AND PLANNING PURPOSES ONLY. NO WARRANTY IS MADE BY UINTAH ENGINEERING & LAND SURVEYING (UELS) FOR ACCURACY OF THE PARCEL DATA.

SCALE: 1" = 2000'

REVISED:

DRAWN BY: J.L.H.

DATE DRAWN: 09-18-13

N

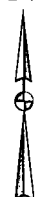
ConocoPhillips

**ConocoPhillips Company**

**SEMU 244**  
SECTION 19, T20S, R38E, N.M.P.M.  
155' FSL 1473' FEL



Corporate Office \* 85 South 200 East  
Vernal, UT 84078 \* (435) 789-1017



**POWER LINE MAP**

**TOPO E**



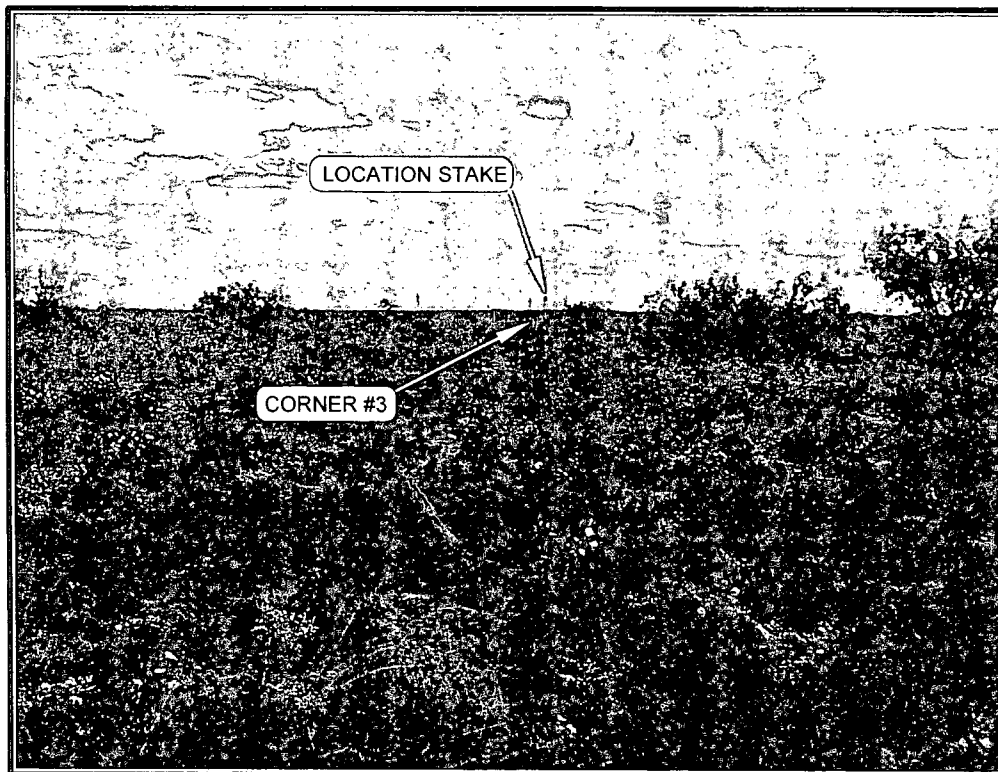


PHOTO: VIEW FROM CORNER #3 TO LOCATION STAKE

CAMERA ANGLE: SOUTHERLY

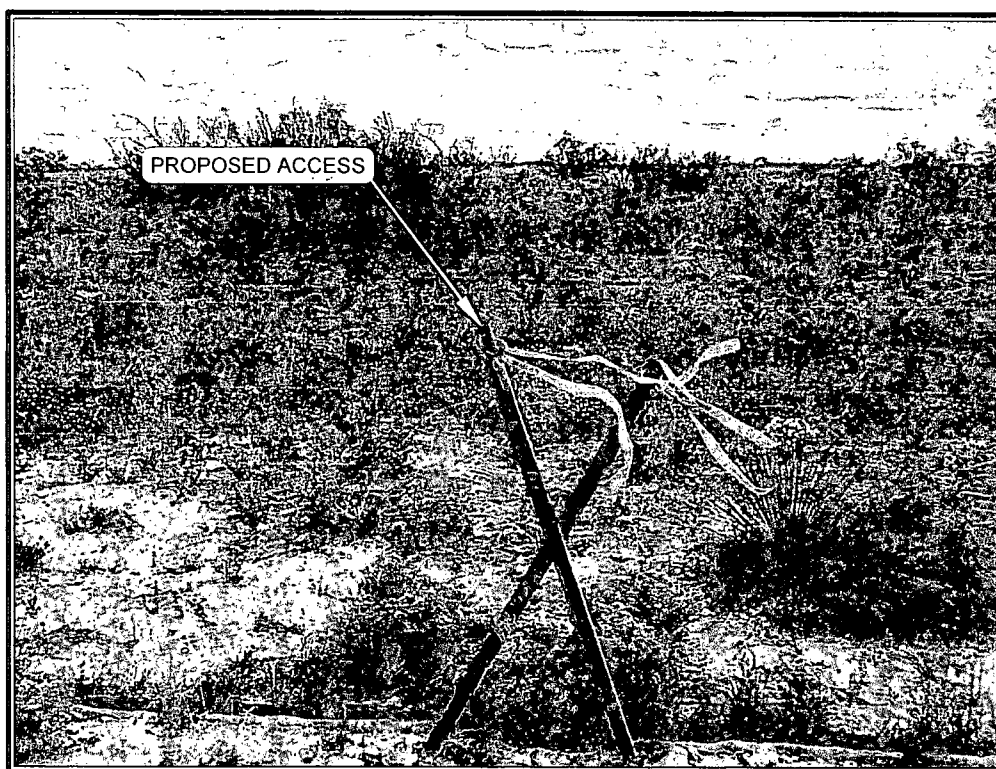


PHOTO: VIEW FROM BEGINNING OF THE PROPOSED ACCESS

CAMERA ANGLE: SOUTHERLY

**NOTES:**

ConocoPhillips

**ConocoPhillips Company**

SEMU 244  
SECTION 19, T20S, R38E, N.M.P.M.  
155' FSL 1473' FEL

TAKEN BY: J.V.

DRAWN BY: J.L.H.

REVISED:

DATE: 09-11-13

DATE: 09-18-13



Corporate Office \* 85 South 200 East  
Vernal, UT 84078 \* (435) 789-1017

**PHOTO SHEET**