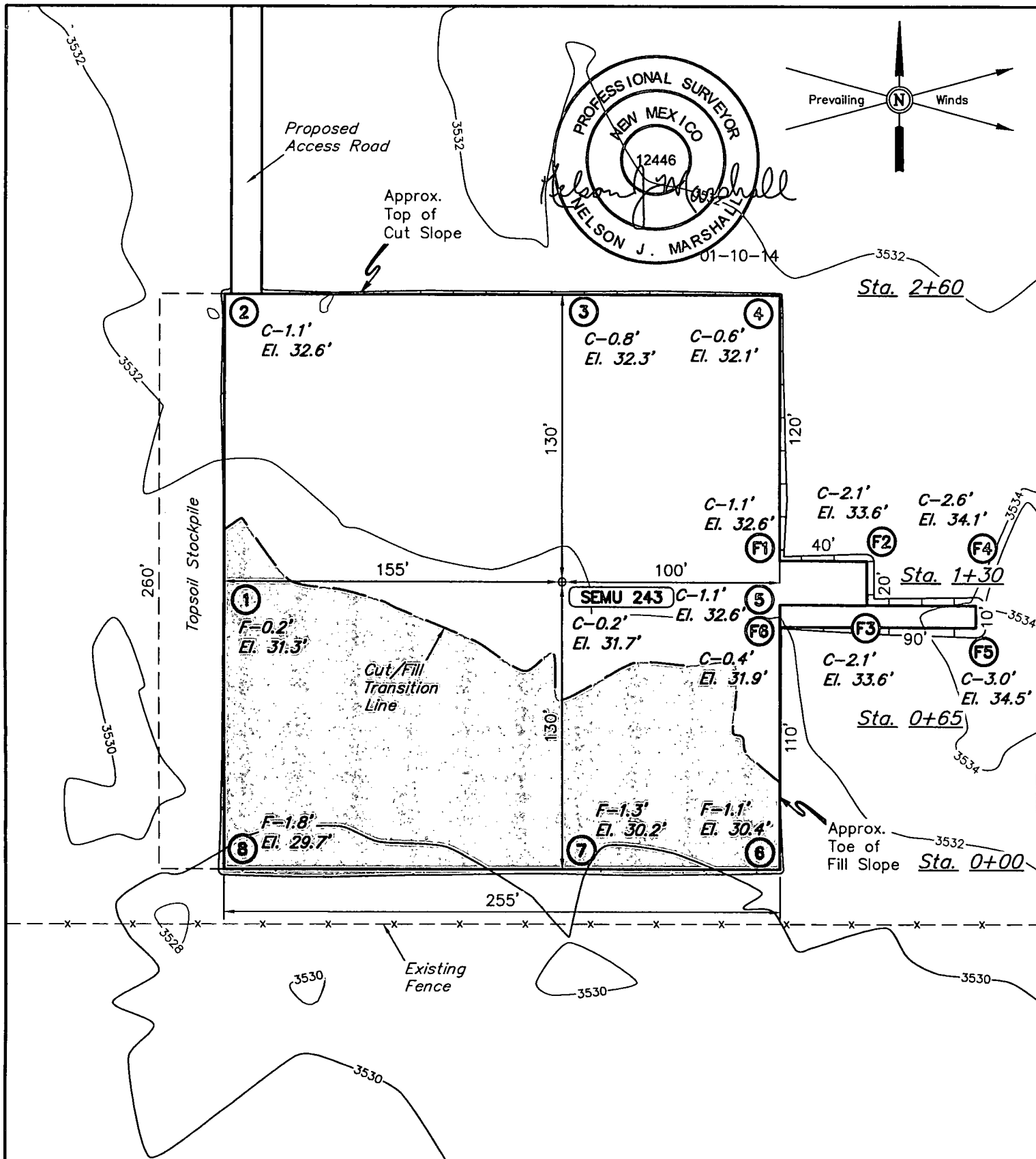


AUG 07 2014



ELEV. UNGRADED GROUND AT LOC. STAKE = 3531.7' FINISHED GRADE ELEV. AT LOC. STAKE = 3531.5'

NOTES:

- Flare pit is to be located a min. of 100' from the well head.
- Underground utilities shown on this sheet are for visualization purposes only, actual locations to be determined prior to construction.
- Construct Diversion Ditches as needed.

ConocoPhillips

ConocoPhillips Company

SEMU 243
SECTION 19, T20S, R38E, N.M.P.M.
150' FSL 2341' FEL

DRAWN BY: S.F.

SCALE: 1" = 60'

DATE: 01-08-14

REVISED:

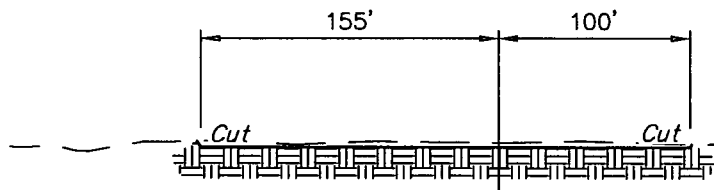
LOCATION LAYOUT

FIGURE #1

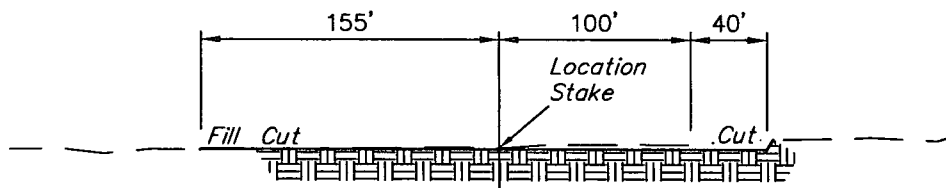


Corporate Office * 85 South 200 East
Vernal, UT 84078 * (435) 789-1017

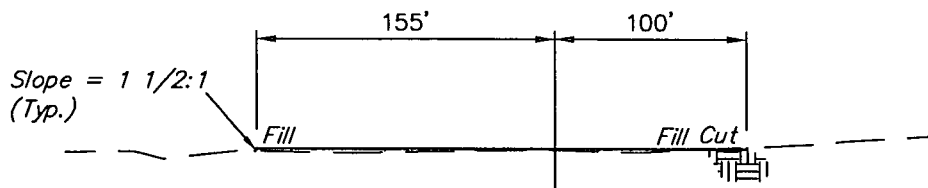
1" = 40'
X-Section
Scale
1" = 100'



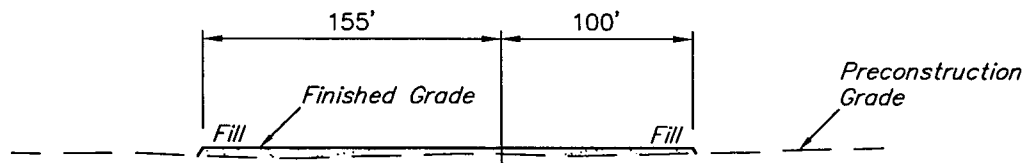
STA. 2+60



STA. 1+30



STA. 0+65



STA. 0+00

APPROXIMATE EARTHWORK QUANTITIES		APPROXIMATE SURFACE DISTURBANCE AREAS		
(3") TOPSOIL STRIPPING	650 Cu. Yds.		DISTANCE	ACRES
REMAINING LOCATION	1,060 Cu. Yds.	WELL SITE DISTURBANCE	NA	±1.613
TOTAL CUT	1,710 Cu. Yds.	ACCESS ROAD DISTURBANCE	±362.79'	±0.167
FILL	1,060 Cu. Yds.	PIPELINE DISTURBANCE	±3037.28'	±0.418
EXCESS MATERIAL	650 Cu. Yds.	POWER LINE DISTURBANCE	±314.77'	±0.072
TOPSOIL	650 Cu. Yds.	TOTAL DISTURBANCE	±3714.84'	±2.270
EXCESS UNBALANCE (After Interim Rehabilitation)	0 Cu. Yds.			

NOTES:

- Fill quantity includes 5% for compaction.
- Topsoil should not be stripped below finished grade on substructure area.

ConocoPhillips

ConocoPhillips Company

SEMU 243
SECTION 19, T20S, R38E, N.M.P.M.
150' FSL 2341' FEL

DRAWN BY: S.F.

SCALE: AS SHOWN

DATE: 01-08-14

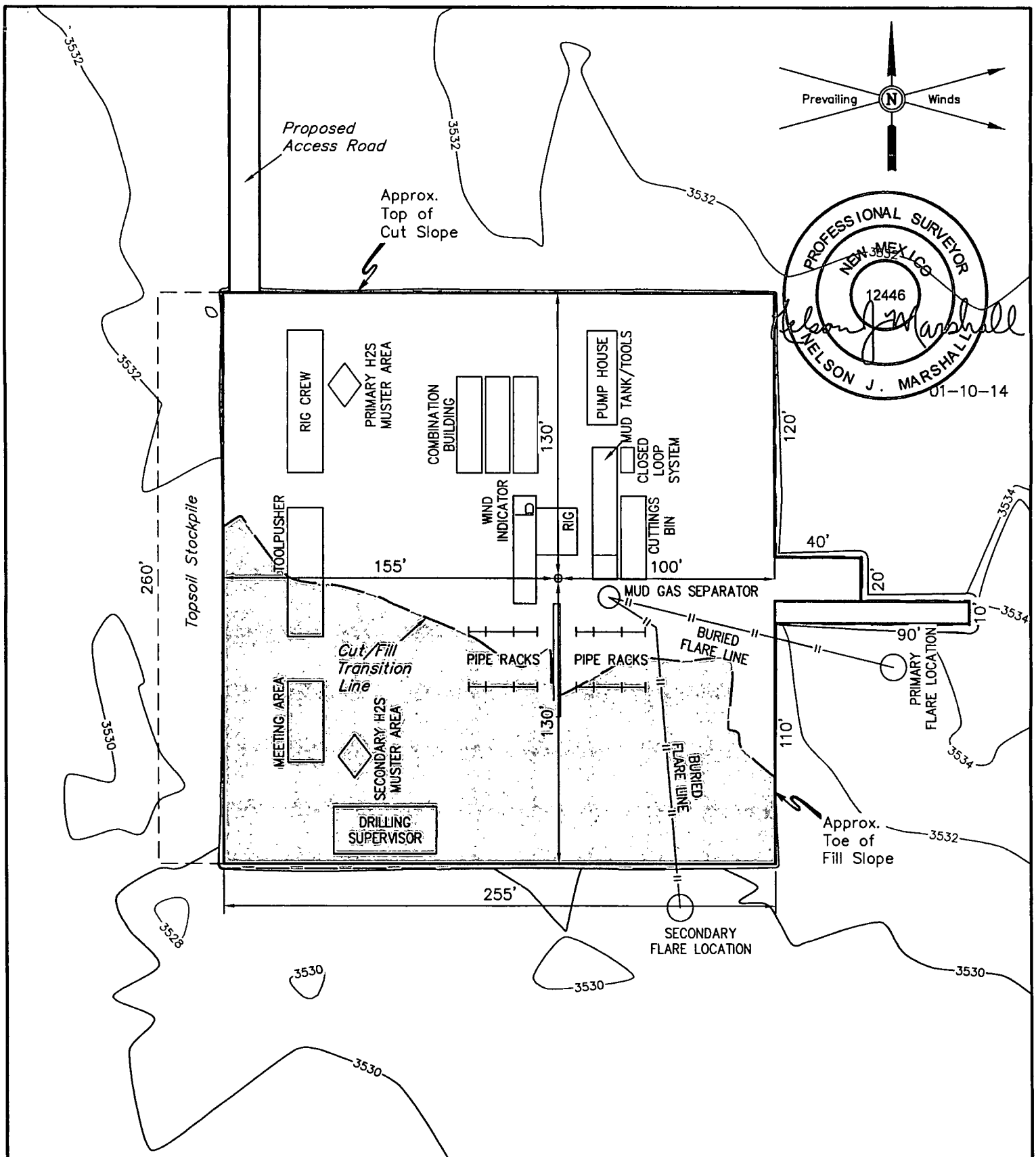
REVISED:



Corporate Office * 85 South 200 East
Vernal, UT 84078 * (435) 789-1017

TYPICAL CROSS SECTIONS

FIGURE #2



NOTES:

- Flare pit is to be located a min. of 160' from the well head.

ConocoPhillips

ConocoPhillips Company

SEMU 243
SECTION 19, T20S, R38E, N.M.P.M.
150' FSL 2341' FEL

DRAWN BY: S.F.

SCALE: 1" = 60'

DATE: 01-08-14

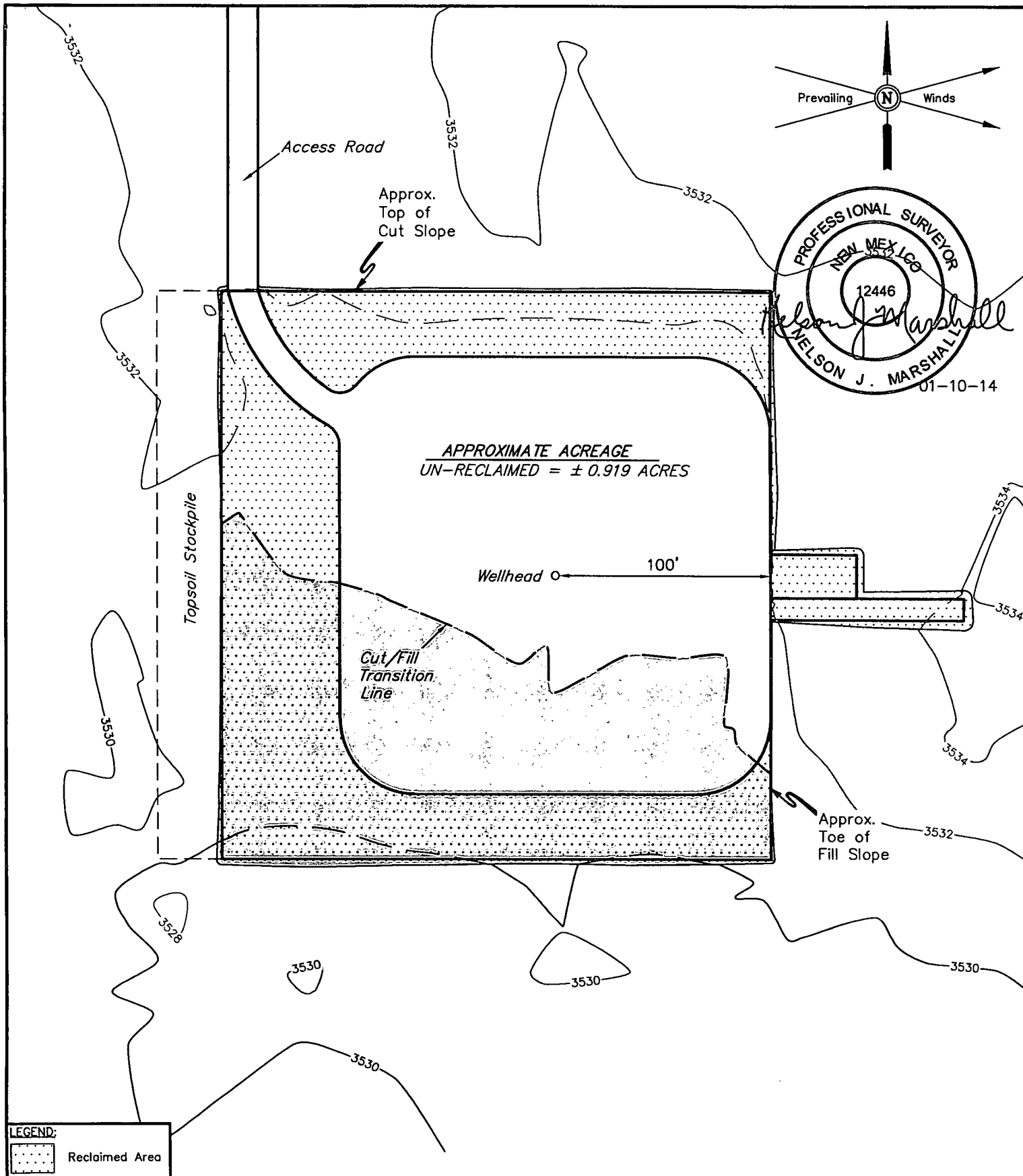
REVISED:

TYPICAL RIG LAYOUT

FIGURE #3



Corporate Office * 85 South 200 East
Vernal, UT 84078 * (435) 789-1017



LEGEND:
Reclaimed Area

NOTES:

ConocoPhillips

ConocoPhillips Company

SEMU 243
SECTION 19, T20S, R38E, N.M.P.M.
150' FSL 2341' FEL

DRAWN BY: S.F.

SCALE: 1" = 60'

DATE: 01-08-14

REVISED:

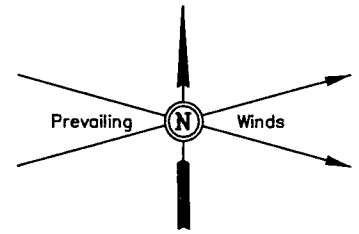


Corporate Office * 85 South 200 East
Vernal, UT 84078 * (435) 789-1017

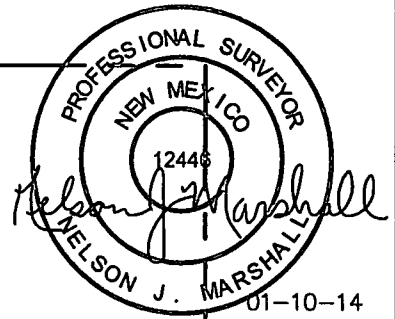
RECLAMATION DIAGRAM

FIGURE #4

*Proposed
Access Road*



LINE TABLE		
LINE	DIRECTION	LENGTH
L1	SOUTH	155'



Wellhead

L1

*Existing
Fence*

*600' X 600'
Archaeological Survey
Boundary*

NOTES:

ConocoPhillips

ConocoPhillips Company

SEMU 243
SECTION 19, T20S, R38E, N.M.P.M.
150' FSL 2341' FEL

DRAWN BY: S.F.

SCALE: 1" = 100'

DATE: 01-08-14

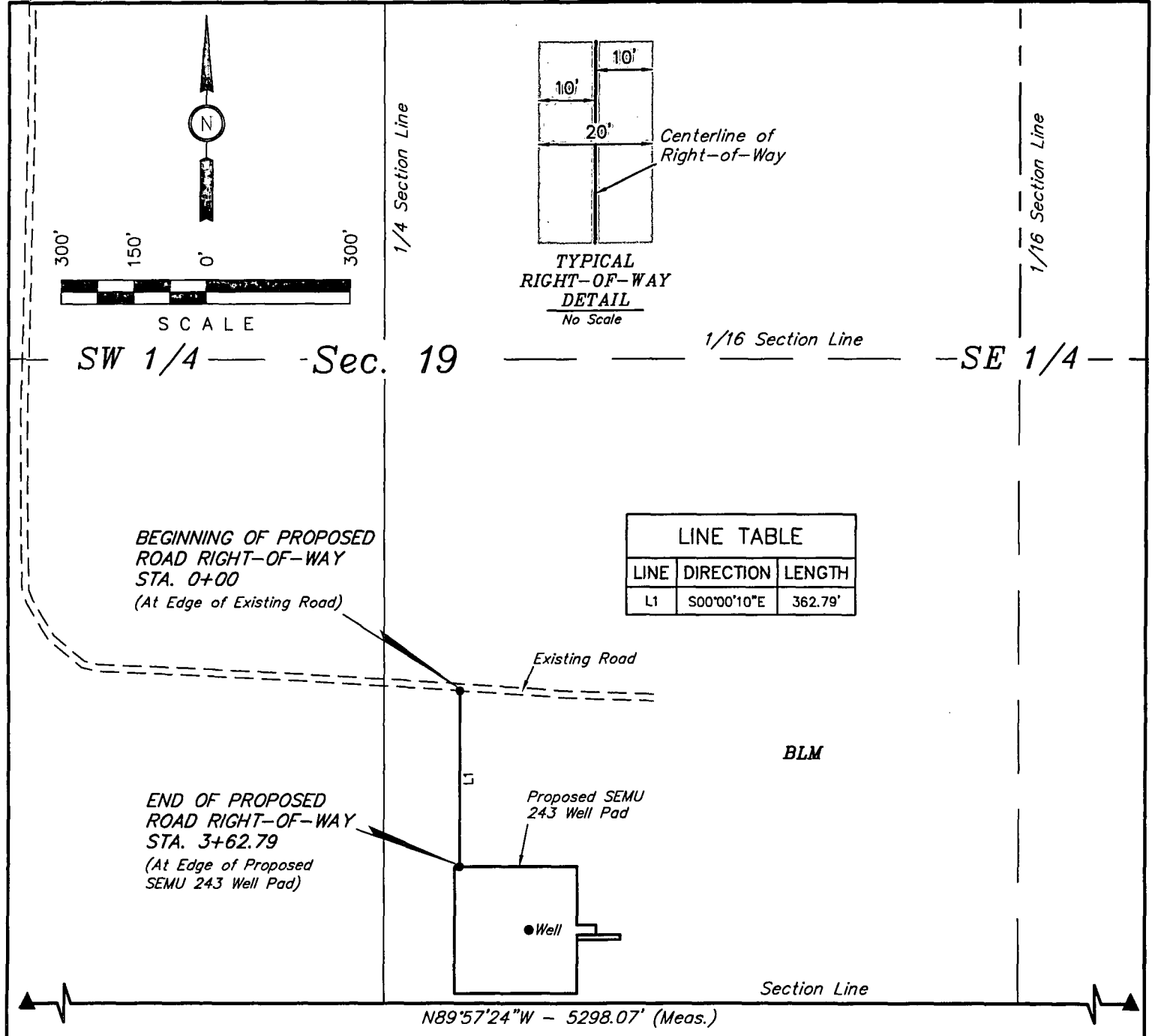
REVISED:

ARCHAEOLOGICAL SURVEY
BOUNDARY

FIGURE #5



Corporate Office * 85 South 200 East
Vernal, UT 84078 * (435) 789-1017



LINE TABLE		
LINE	DIRECTION	LENGTH
L1	S00°00'10"E	362.79'

ROAD RIGHT-OF-WAY DESCRIPTION

A 20' WIDE RIGHT-OF-WAY 10' ON EACH SIDE OF THE FOLLOWING DESCRIBED CENTERLINE.

BEGINNING AT A POINT IN THE SW 1/4 SE 1/4 OF SECTION 19, T20S, R38E, N.M.P.M., WHICH BEARS N75°27'45"W 2568.33' FROM THE SOUTHEAST CORNER OF SAID SECTION 19, THENCE S00°00'10"E 362.79' TO A POINT IN THE SW 1/4 SE 1/4 OF SAID SECTION 19, WHICH BEARS N83°31'51"W 2502.02' FROM THE SOUTHEAST CORNER OF SAID SECTION 19. THE SIDE LINES OF SAID DESCRIBED RIGHT-OF-WAY BEING SHORTENED OR ELONGATED TO MEET THE GRANTOR'S PROPERTY LINES. BASIS OF BEARINGS IS A G.P.S. OBSERVATION. CONTAINS 0.167 ACRES MORE OR LESS.

BEGINNING OF ROAD STA. 0+00 BEARS
N75°27'45"W 2568.33' FROM THE SOUTHEAST
CORNER OF SECTION 19, T20S, R38E, N.M.P.M.

END OF ROAD STA. 3+62.79 BEARS
N83°31'51"W 2502.02' FROM THE SOUTHEAST
CORNER OF SECTION 19, T20S, R38E, N.M.P.M.

RIGHT-OF-WAY LENGTHS			
DESCRIPTION	FEET	ACRES	RODS
BLM SE 1/4	362.79	0.167	21.99

▲ = SECTION CORNERS LOCATED.

CERTIFICATE OF PROFESSIONAL SURVEY

THIS IS TO CERTIFY THAT THE ABOVE PLAT WAS PREPARED FROM FIELD NOTES OF ACTUAL SURVEYS MADE BY ME OR UNDER MY SUPERVISION AND THAT THE SAME ARE TRUE AND CORRECT TO THE BEST OF MY KNOWLEDGE AND BELIEF.

12446

Nelson J. Marshall

REGISTERED LAND SURVEYOR
REGISTRATION NO. 12446
STATE OF NEW MEXICO

01-10-14

NOTES:

ConocoPhillips

ConocoPhillips Company

SEMU 243
SECTION 19, T20S, R38E, N.M.P.M.
LEA, COUNTY, NEW MEXICO

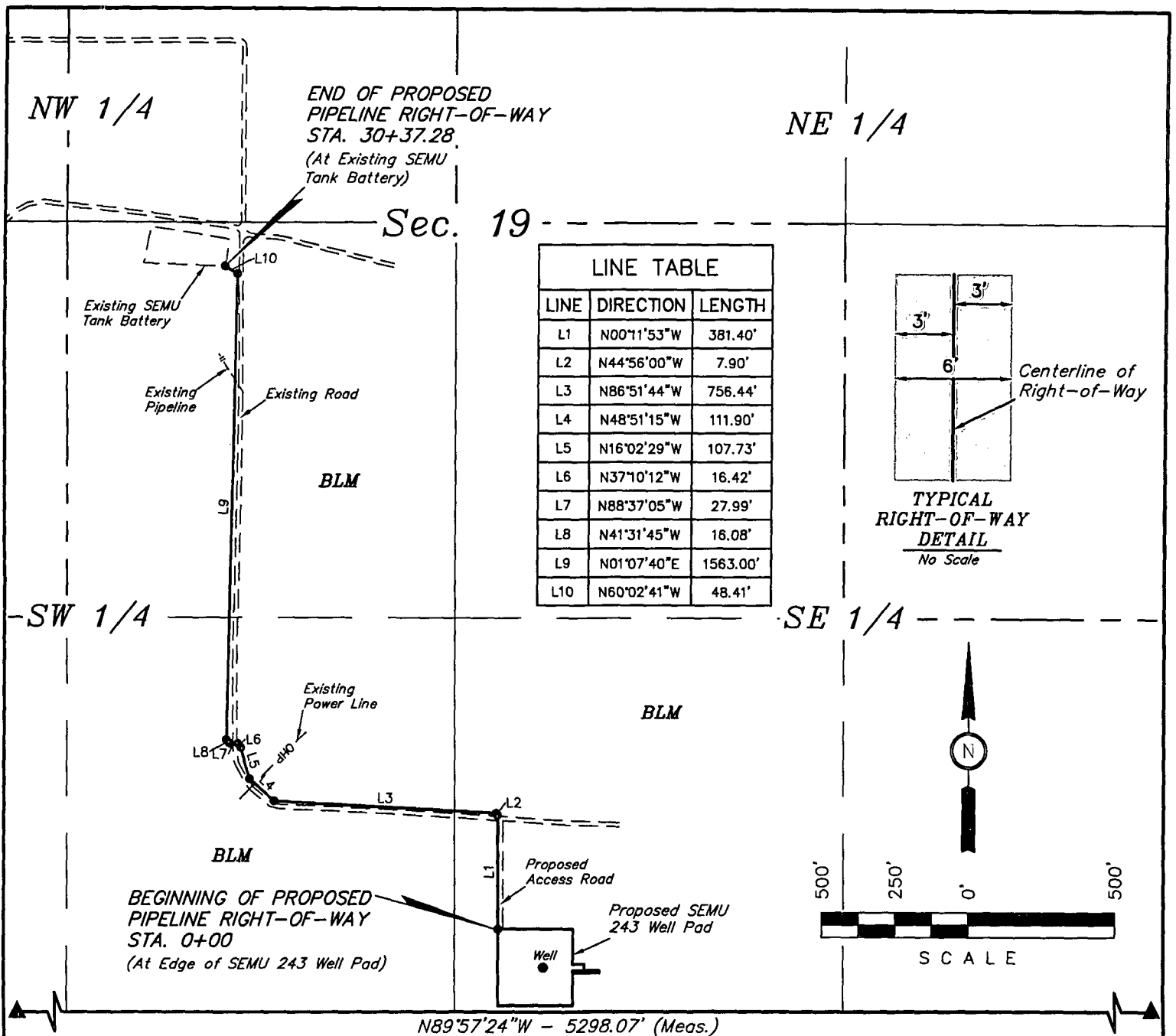
DRAWN BY: S.F. SCALE: 1" = 300'
DATE: 01-08-14 REVISED:

UINTAH
ENGINEERING & LAND SURVEYING

Corporate Office * 85 South 200 East
Vernal, UT 84078 * (435) 789-1017

ACCESS ROAD R-O-W

FIGURE #6



PIPELINE RIGHT-OF-WAY DESCRIPTION

A 6' WIDE RIGHT-OF-WAY 3' ON EACH SIDE OF THE FOLLOWING DESCRIBED CENTERLINE.

BEGINNING AT A POINT IN THE SW 1/4 SE 1/4 OF SECTION 19, T20S, R38E, N.M.P.M., WHICH BEARS N83°33'23"W 2511.74' FROM THE SOUTHEAST CORNER OF SAID SECTION 19, THENCE N00°11'53"W 381.40'; THENCE N44°56'00"W 7.90'; THENCE N86°51'44"W 756.44'; THENCE N48°51'15"W 111.90'; THENCE N16°02'29"W 107.73'; THENCE N37°10'12"W 16.42'; THENCE N88°37'05"W 27.99'; THENCE N41°31'45"W 16.08'; THENCE N01°07'40"E 1563.00'; THENCE N60°02'41"W 48.41' TO A POINT IN THE NE 1/4 SW 1/4 OF SAID SECTION 19, WHICH BEARS N53°55'36"W 4245.95' FROM THE SOUTHEAST CORNER OF SAID SECTION 19. THE SIDE LINES OF SAID DESCRIBED RIGHT-OF-WAY BEING SHORTENED OR ELONGATED TO MEET THE GRANTOR'S PROPERTY LINES. BASIS OF BEARINGS IS A G.P.S. OBSERVATION. CONTAINS 0.418 ACRES MORE OR LESS.

BEGINNING OF PIPELINE STA. 0+00 BEARS N83°33'23"W 2511.74' FROM THE SOUTHEAST CORNER OF SECTION 19, T20S, R38E, N.M.P.M.

END OF PIPELINE STA. 30+37.28 BEARS N53°55'36"W 4245.95' FROM THE SOUTHEAST CORNER OF SECTION 19, T20S, R38E, N.M.P.M.

RIGHT-OF-WAY LENGTHS

DESCRIPTION	FEET	ACRES	RODS
BLM SE 1/4	530.52	0.073	32.15
BLM SW 1/4	2506.76	0.345	151.93

▲ = SECTION CORNERS LOCATED.

NOTES:

ConocoPhillips

ConocoPhillips Company

SEMU 243
SECTION 19, T20S, R38E, N.M.P.M.
LEA, COUNTY, NEW MEXICO

DRAWN BY: S.F.

SCALE: 1" = 500'

DATE: 01-08-14

REVISED:

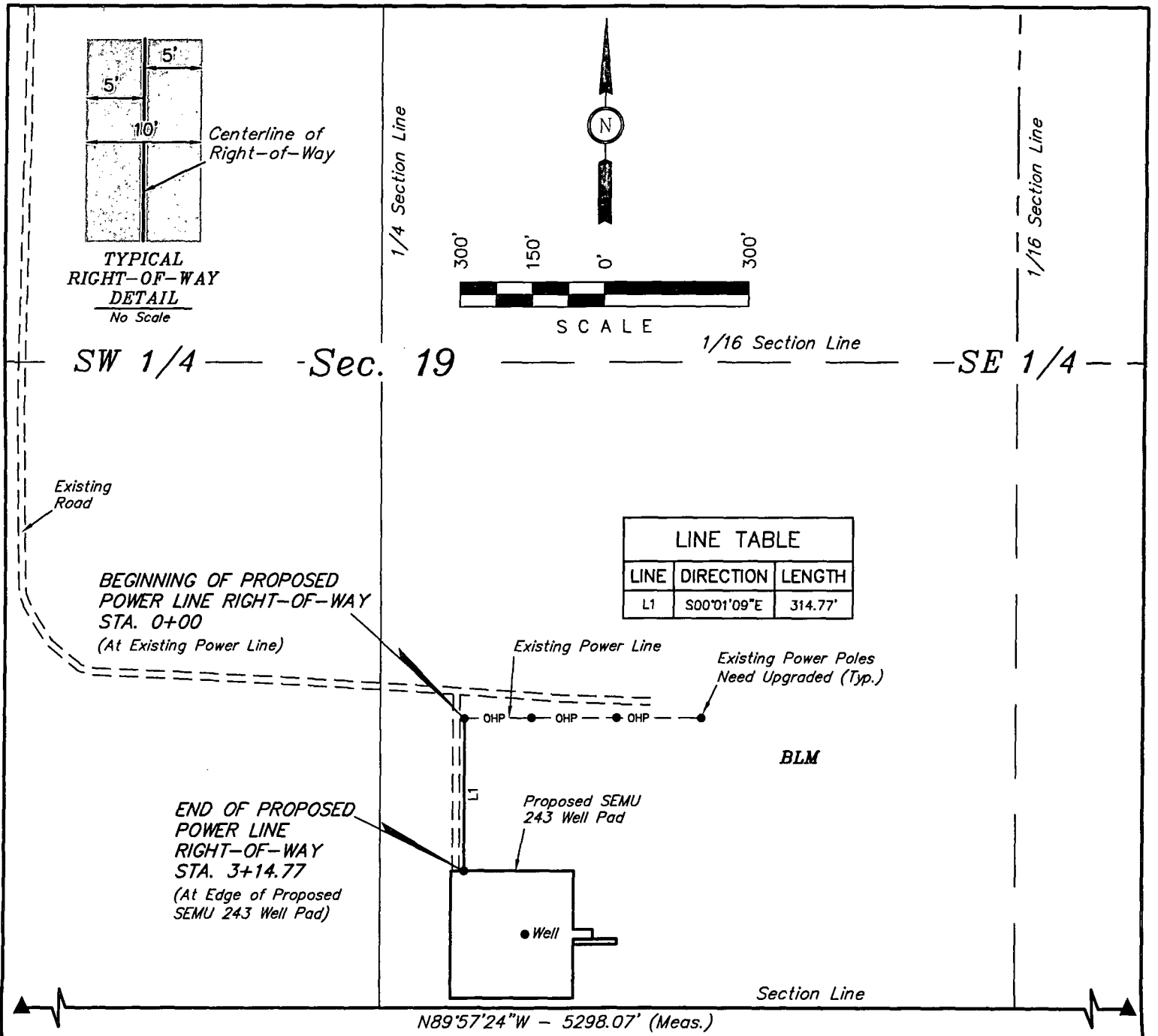
PIPELINE R-O-W

FIGURE #7

UINTAH
ENGINEERING & LAND SURVEYING

Corporate Office * 85 South 200 East
Vernal, UT 84078 * (435) 789-1017

CERTIFICATE OF PROFESSIONAL SURVEY
THIS IS TO CERTIFY THAT THE ABOVE PLAT WAS PREPARED FROM FIELD NOTES OF ACTUAL SURVEYS MADE BY ME OR UNDER MY SUPERVISION AND THAT THE SAME ARE TRUE AND CORRECT TO THE BEST OF MY KNOWLEDGE AND BELIEF.
Nelson J. Marshall
REGISTERED LAND SURVEYOR
REGISTRATION NO. 12446
STATE OF NEW MEXICO
01-10-14



LINE TABLE		
LINE	DIRECTION	LENGTH
L1	S00°01'09"E	314.77'

POWER LINE RIGHT-OF-WAY DESCRIPTION

A 10' WIDE RIGHT-OF-WAY 5' ON EACH SIDE OF THE FOLLOWING DESCRIBED CENTERLINE.

BEGINNING AT A POINT IN THE SW 1/4 SE 1/4 OF SECTION 19, T20S, R38E, N.M.P.M., WHICH BEARS N76°24'56"W 2540.24' FROM THE SOUTHEAST CORNER OF SAID SECTION 19, THENCE S00°01'09"E 314.77' TO A POINT IN THE SW 1/4 SE 1/4 OF SAID SECTION 19, WHICH BEARS N83°29'14"W 2485.11' FROM THE SOUTHEAST CORNER OF SAID SECTION 19. THE SIDE LINES OF SAID DESCRIBED RIGHT-OF-WAY BEING SHORTENED OR ELONGATED TO MEET THE GRANTOR'S PROPERTY LINES. BASIS OF BEARINGS IS A G.P.S. OBSERVATION. CONTAINS 0.072 ACRES MORE OR LESS.

BEGINNING OF POWER LINE STA. 0+00 BEARS N76°24'56"W 2540.24' FROM THE SOUTHEAST CORNER OF SECTION 19, T20S, R38E, N.M.P.M.

END OF POWER LINE STA. 3+14.77 BEARS N83°29'14"W 2485.11' FROM THE SOUTHEAST CORNER OF SECTION 19, T20S, R38E, N.M.P.M.

RIGHT-OF-WAY LENGTHS			
DESCRIPTION	FEET	ACRES	RODS
BLM SE 1/4	314.77	0.072	19.08

▲ = SECTION CORNERS LOCATED.

CERTIFICATE OF PROFESSIONAL SURVEY

THIS IS TO CERTIFY THAT THE ABOVE PLAT WAS PREPARED FROM FIELD NOTES OF ACTUAL SURVEYS MADE BY ME OR UNDER MY SUPERVISION AND THAT THE SAME ARE TRUE AND CORRECT TO THE BEST OF MY KNOWLEDGE AND BELIEF.

12446

Nelson J. Marshall

REGISTERED LAND SURVEYOR
REGISTRATION NO. 12446
STATE OF NEW MEXICO

01-10-14

NOTES:

ConocoPhillips

ConocoPhillips Company

SEMU 243
SECTION 19, T20S, R38E, N.M.P.M.
LEA, COUNTY, NEW MEXICO

DRAWN BY: S.F.

SCALE: 1" = 300'

DATE: 01-08-14

REVISED:

POWER LINE R-O-W

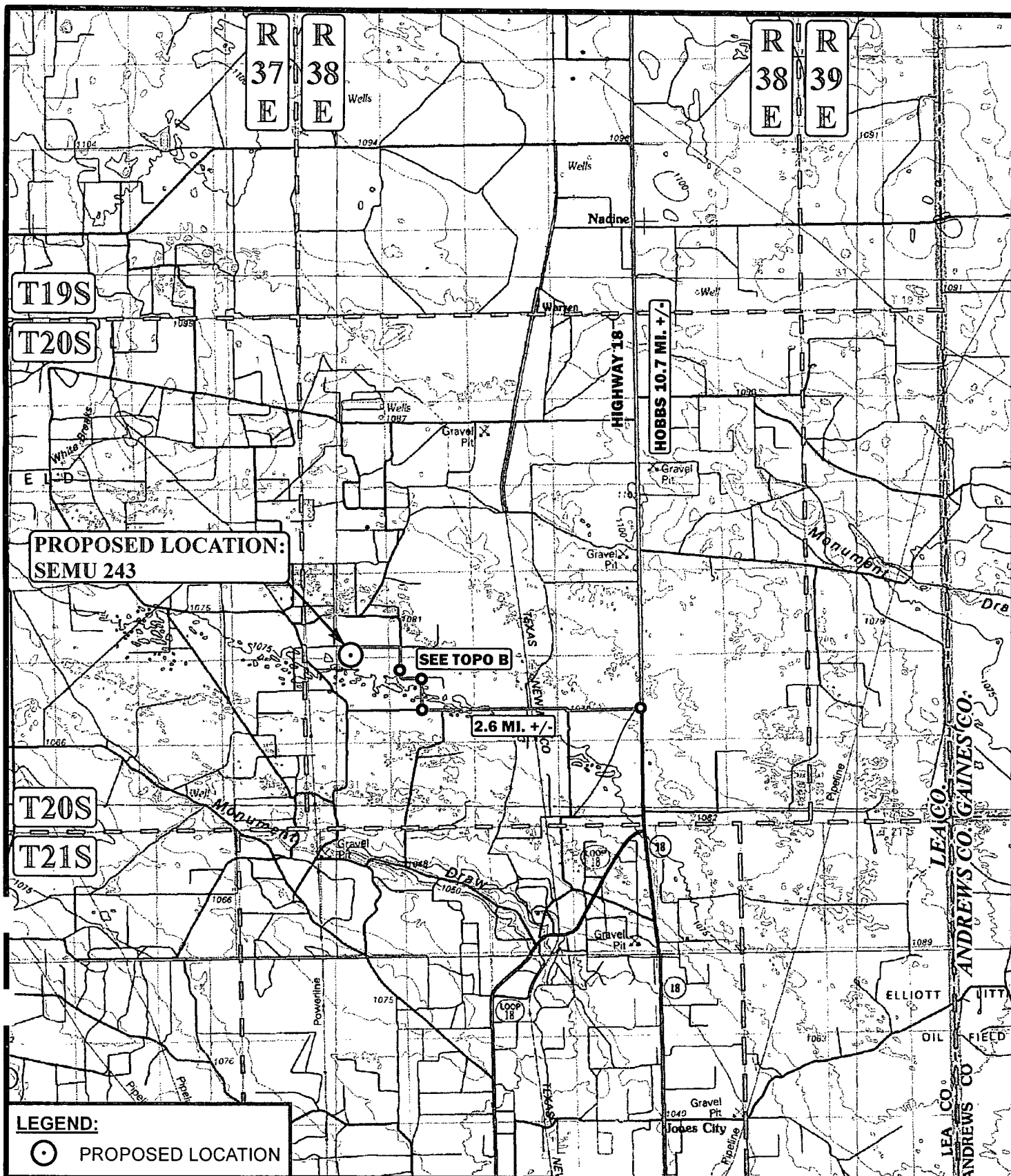
FIGURE #8

Corporate Office * 85 South 200 East
Vernal, UT 84078 * (435) 789-1017

ConocoPhillips Company
SEMU 243
SECTION 19, T20S, R38E, N.M.P.M.

BEGINNING AT THE INTERSECTION OF U.S. HIGHWAY 62/U.S. HIGHWAY 180 AND HIGHWAY 18, PROCEED IN A SOUTHERLY DIRECTION FROM HOBBS, NEW MEXICO ALONG HIGHWAY 18 APPROXIMATELY 10.7 MILES TO THE JUNCTION OF THIS ROAD AND AN EXISTING ROAD TO THE WEST; TURN RIGHT AND PROCEED IN A WESTERLY DIRECTION APPROXIMATELY 2.6 MILES TO THE JUNCTION OF THIS ROAD AND AN EXISTING ROAD TO THE NORTH; TURN RIGHT AND PROCEED IN A NORTHERLY DIRECTION APPROXIMATELY 0.4 MILES TO THE JUNCTION OF THIS ROAD AND AN EXISTING ROAD TO THE WEST; TURN LEFT AND PROCEED IN A WESTERLY, THEN NORTHERLY DIRECTION APPROXIMATELY 0.6 MILES TO THE JUNCTION OF THIS ROAD AND AN EXISTING ROAD TO THE WEST; TURN LEFT AND PROCEED IN AN WESTERLY DIRECTION APPROXIMATELY 0.6 MILES TO THE BEGINNING OF THE PROPOSED ACCESS TO THE SOUTH; FOLLOW ROAD FLAGS IN A SOUTHERY DIRECTION APPROXIMATELY 363' TO THE PROPOSED LOCATION.

TOTAL DISTANCE FROM HOBBS, NEW MEXICO TO THE PROPOSED LOCATION IS APPROXIMATELY 15.0 MILES.



LEGEND:



PROPOSED LOCATION

SCALE: 1:100,000

REVISED:

DRAWN BY: L.S.

DATE DRAWN: 12-19-13

N



ConocoPhillips

ConocoPhillips Company

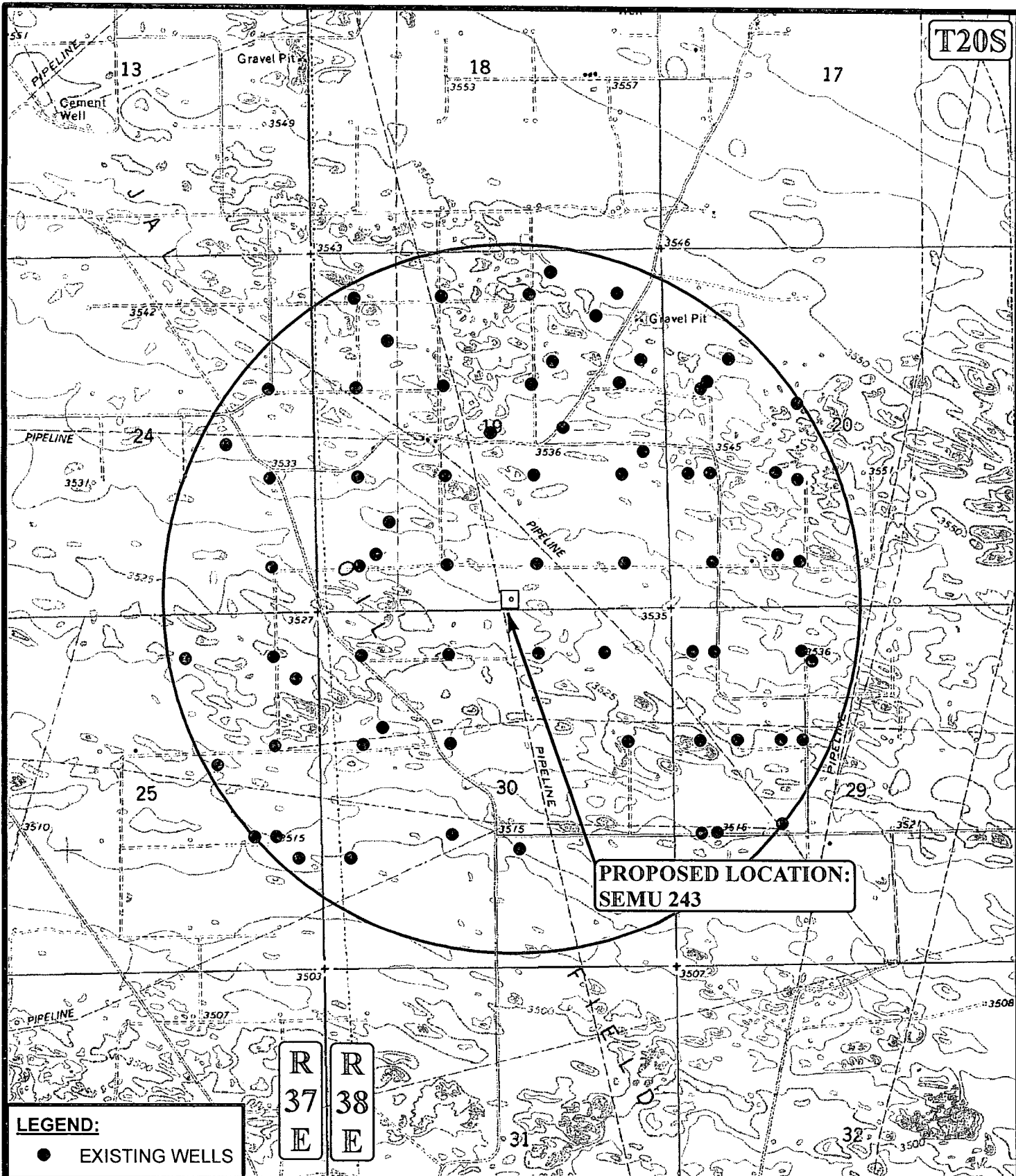
SEMU 243
SECTION 19, T20S, R38E, N.M.P.M.
150' FSL 2341' FEL

ACCESS ROAD MAP

TOPO A



Corporate Office * 85 South 200 East
Vernal, UT 84078 * (435) 789-1017



SCALE: 1" = 2000'

REVISED:

DRAWN BY: L.S.

DATE DRAWN: 12-19-13



ConocoPhillips

ConocoPhillips Company

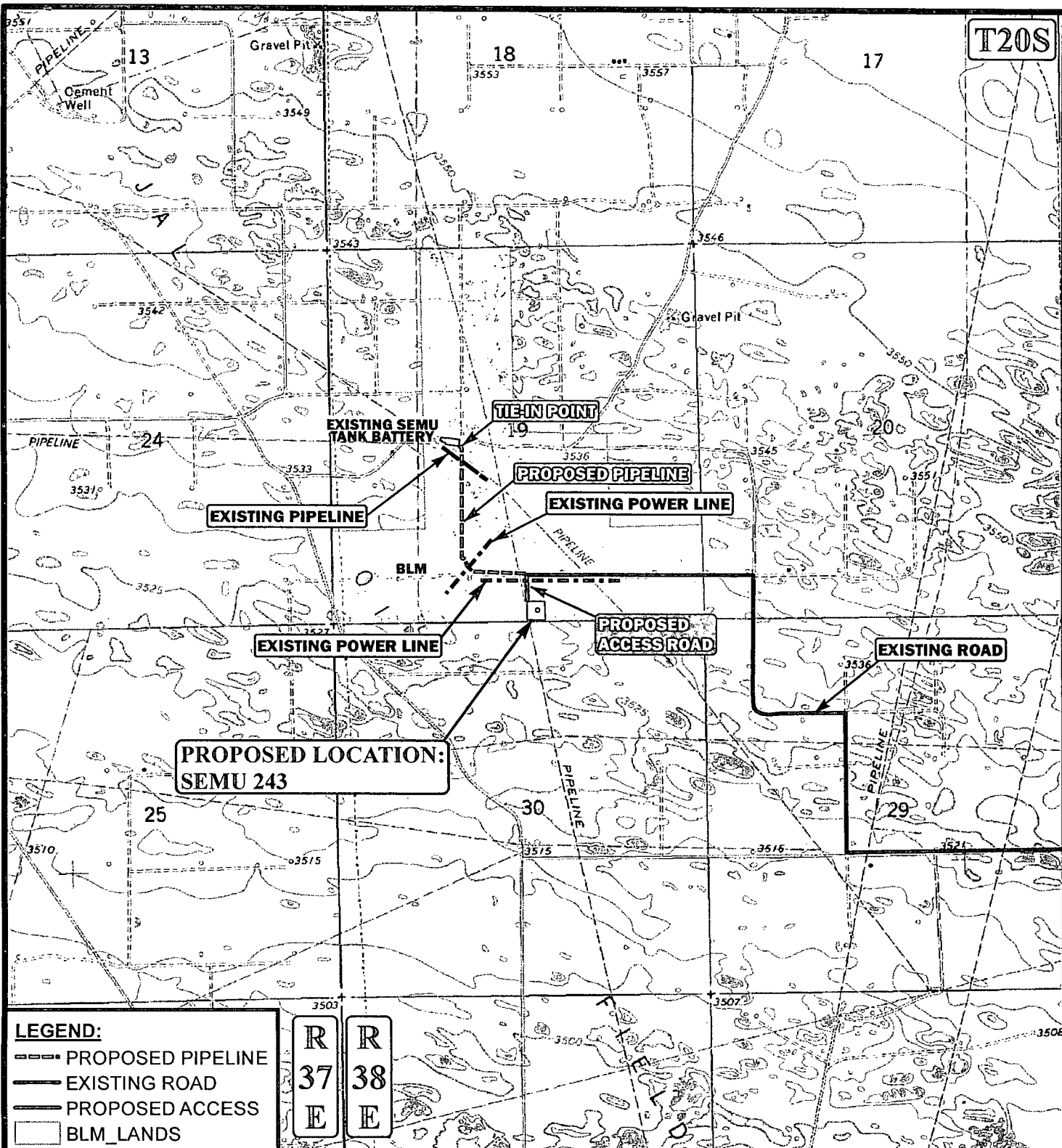
SEMU 243
SECTION 19, T20S, R38E, N.M.P.M.
150' FSL 2341' FEL



Corporate Office * 85 South 200 East
Vernal, UT 84078 * (435) 789-1017

TOPOGRAPHIC MAP

TOPO C



APPROXIMATE TOTAL PIPELINE DISTANCE = 3,037' +/-

*PARCEL DATA SHOWN HAS BEEN OBTAINED FROM VARIOUS SOURCES AND SHOULD BE USED FOR MAPPING, GRAPHIC AND PLANNING PURPOSES ONLY. NO WARRANTY IS MADE BY UINAH ENGINEERING & LAND SURVEYING (UELS) FOR ACCURACY OF THE PARCEL DATA.

SCALE: 1" = 2000'

REVISED:

DRAWN BY: L.S.

DATE DRAWN: 12-19-13



ConocoPhillips

ConocoPhillips Company

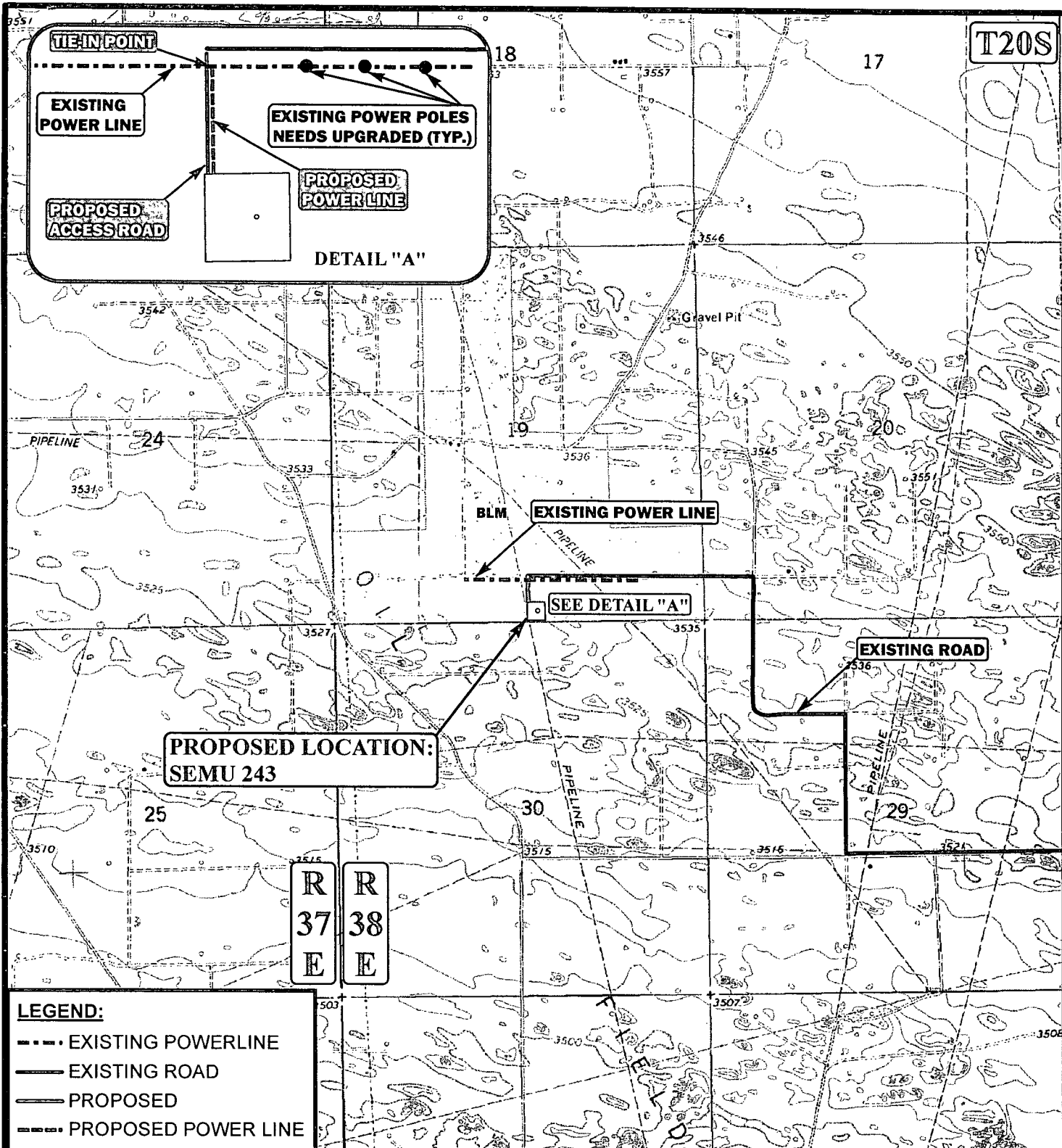
SEMU 243
SECTION 19, T20S, R38E, N.M.P.M.
150' FSL 2341' FEL

PIPELINE MAP

TOPO D



Corporate Office * 85 South 200 East
Vernal, UT 84078 * (435) 789-1017



APPROXIMATE TOTAL POWER LINE DISTANCE = 315' +/-

*PARCEL DATA SHOWN HAS BEEN OBTAINED FROM VARIOUS SOURCES AND SHOULD BE USED FOR MAPPING, GRAPHIC AND PLANNING PURPOSES ONLY. NO WARRANTY IS MADE BY UINTAH ENGINEERING & LAND SURVEYING (UELS) FOR ACCURACY OF THE PARCEL DATA.

SCALE: 1" = 2000'

REVISED:

DRAWN BY: L.S.

DATE DRAWN: 12-19-13



ConocoPhillips

ConocoPhillips Company

SEMU 243
SECTION 19, T20S, R38E, N.M.P.M.
150' FSL 2341' FEL



Corporate Office * 85 South 200 East
Vernal, UT 84078 * (435) 789-1017

POWER LINE MAP

TOPO E

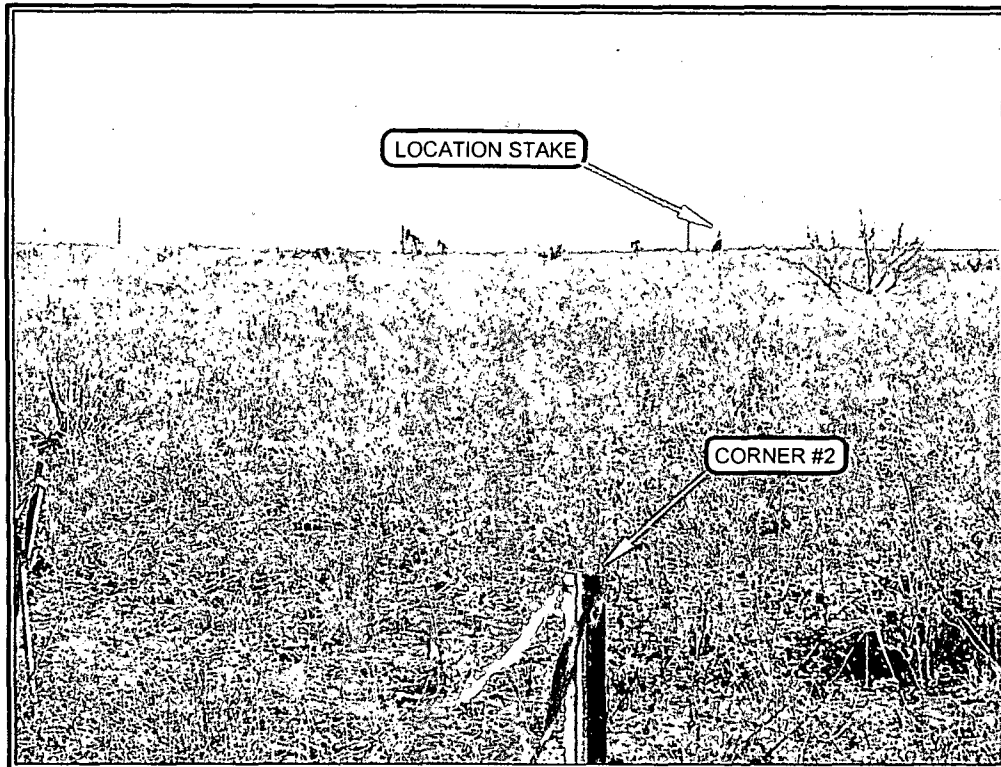


PHOTO: VIEW FROM CORNER #2 TO LOCATION STAKE

CAMERA ANGLE: SOUTHEASTERLY

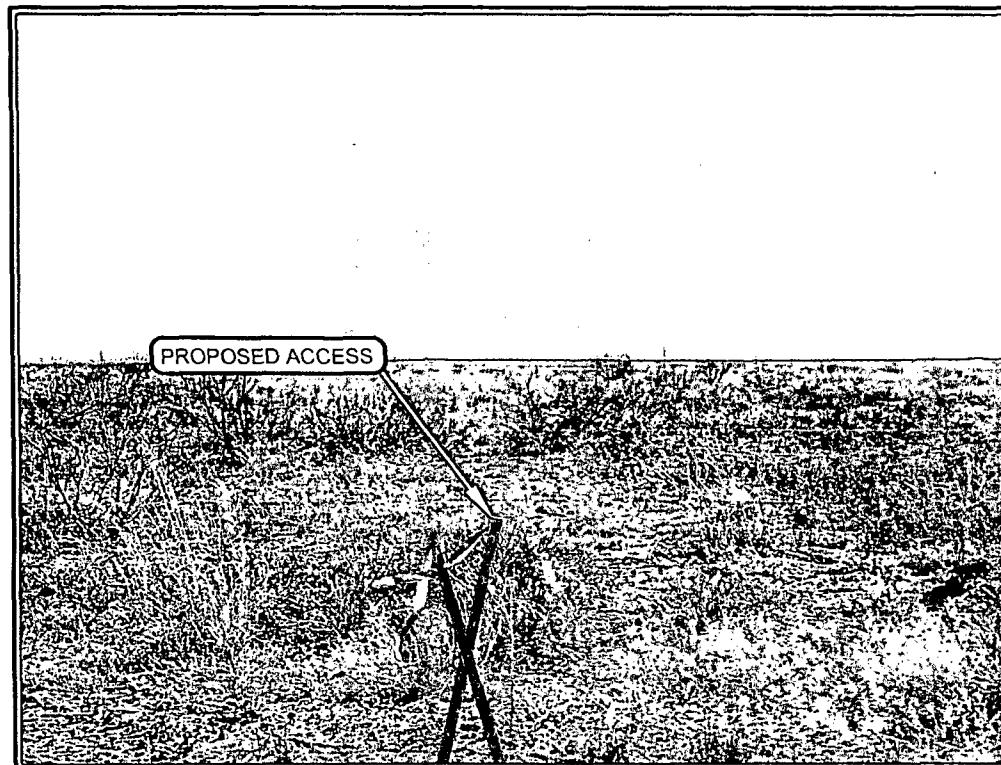


PHOTO: VIEW OF BEGINNIG OF PROPOSED ACCESS ROAD

CAMERA ANGLE: SOUTHERLY

NOTES:

ConocoPhillips

ConocoPhillips Company

SEMU 243
SECTION 19, T20S, R38E, N.M.P.M.
150' FSL 2341' FEL

TAKEN BY: J.V.

DRAWN BY: L.S.

REVISED: 01-28-14 L.S.

DATE: 12-16-13

DATE: 12-19-13



Corporate Office * 85 South 200 East
Vernal, UT 84078 * (435) 789-1017

PHOTO SHEET