

**District I**  
1625 N. French Dr., Hobbs, NM 88240  
Phone: (575) 293-6161 Fax: (575) 293-0720

**District II**  
811 S. First St., Artesia, NM 88210  
Phone: (575) 748-1283 Fax: (575) 748-9720

**District III**  
1000 Rio Brazos Road, Aztec, NM 87410  
Phone: (505) 334-6178 Fax: (505) 334-6170

**District IV**  
1220 S. St. Francis Dr., Santa Fe, NM 87505  
Phone: (505) 476-3460 Fax: (505) 476-3462

State of New Mexico  
Energy, Minerals & Natural Resources Department  
OIL CONSERVATION DIVISION  
1220 South St. Francis Dr.  
Santa Fe, NM 87505

Revised August 1, 2011  
Submit one copy to appropriate  
District Office  
☐ AMENDED REPORT

# WELL LOCATION AND ACREAGE DEDICATION PLAT

<sup>1</sup> API Number 30-025-42030	<sup>2</sup> Pool Code 41440	<sup>3</sup> Pool Name Lusk; Bone Spring
<sup>4</sup> Property Code 313577	<sup>5</sup> Property Name TAYLOR DRAW 7 FED COM	<sup>6</sup> Well Number 2H
<sup>7</sup> OGRID No. 6137	<sup>8</sup> Operator Name DEVON ENERGY PRODUCTION COMPANY, L.P.	<sup>9</sup> Elevation 3612.1

10 Surface Location									
UL or lot no.	Section	Township	Range	Lot Idn	Feet from the	North/South line	Feet from the	East/West line	County
P	7	19 S	32 E		665	SOUTH	375	EAST	LEA

<sup>11</sup> Bottom Hole Location If Different From Surface

U/L or lot no. <b>4</b>	Section <b>7</b>	Township <b>19 S</b>	Range <b>32 E</b>	Lot Idn	Feet from the <b>825</b>	North/South line <b>SOUTH</b>	Feet from the <b>340</b>	East/West line <b>WEST</b>	County <b>LEA</b>
<sup>12</sup> Dedicated Acres <b>160.81</b>	<sup>13</sup> Joint or Infill	<sup>14</sup> Consolidation Code		<sup>15</sup> Order No.					

No allowable will be assigned to this completion until all interests have been consolidated or a non-standard unit has been approved by the division.

N89°53'16"E 2673.43 FT

NW CORNER SEC. 7  
LAT. = 32.6822969°N  
LONG. = 103.8143075°W

NMSP EAST (FT)  
N = 612341.34  
E = 701027.38

LOI 1

W Q CORNER SEC. 7  
LAT. = 32.6750365°N  
LONG. = 103.8142876°W

NMSP EAST (FT)  
N = 609699.93  
E = 701046.45

LOI 3

LOI 4

SW CORNER SEC. 7  
LAT. = 32.6677810°N  
LONG. = 103.8142675°W

NMSP EAST (FT)  
N = 607060.31  
E = 701065.55

S89°52'32"W 2670.94 FT

N89°49'41"E 2643.33 FT

N Q CORNER SEC. 7  
LAT. = 32.6822750°N  
LONG. = 103.8056206°W

NMSP EAST (FT)  
N = 612346.57  
E = 703700.19

NOTE:  
LATITUDE AND LONGITUDE COORDINATES  
ARE SHOWN USING THE NORTH  
AMERICAN DATUM OF 1983 (NAD83).  
LISTED NEW MEXICO STATE PLANE EAST  
COORDINATES ARE GRID (NAD83). BASIS  
OF BEARING AND DISTANCES USED ARE  
NEW MEXICO STATE PLANE EAST  
COORDINATES MODIFIED TO THE  
SURFACE.

TAYLOR DRAW "7" FED COM #2H  
ELEV. = 3612.1'  
LAT. = 32.6695674°N (NAD83)  
LONG. = 103.7982263°W

NMSP EAST (FT)  
N = 607734.75  
E = 705998.56

SE CORNER SEC. 7  
LAT. = 32.6677364°N  
LONG. = 103.7970047°W

NMSP EAST (FT)  
N = 607070.52  
E = 706377.83

S89°54'16"W 2642.58 FT

"OPERATOR CERTIFICATION"

I hereby certify that the information contained herein is true and complete  
to the best of my knowledge and belief, and that this organization either  
owns a working interest or unleased mineral interest in the land including  
the proposed bottom hole location or has a right to drill this well at this  
location pursuant to a contract with an owner of such a mineral or working  
interest, or to a voluntary pooling agreement or a compulsory pooling  
order heretofore entered by the division.

3/25/2014

Signature \_\_\_\_\_ Date \_\_\_\_\_

Linda Good

Printed Name \_\_\_\_\_

linda.good@dvsn.com

E-mail Address \_\_\_\_\_

"SURVEYOR CERTIFICATION"

I hereby certify that the well location shown on this  
plat was plotted from field notes of actual surveys  
made by me or under my supervision, and that the  
same is true and correct to the best of my belief.

MARCH 17, 2014

Date of Survey: 2/9/14

Signature and Seal of Professional Surveyor: \_\_\_\_\_

Certificate Number: FJLIMON F. JARAMILLO. PLS 12797

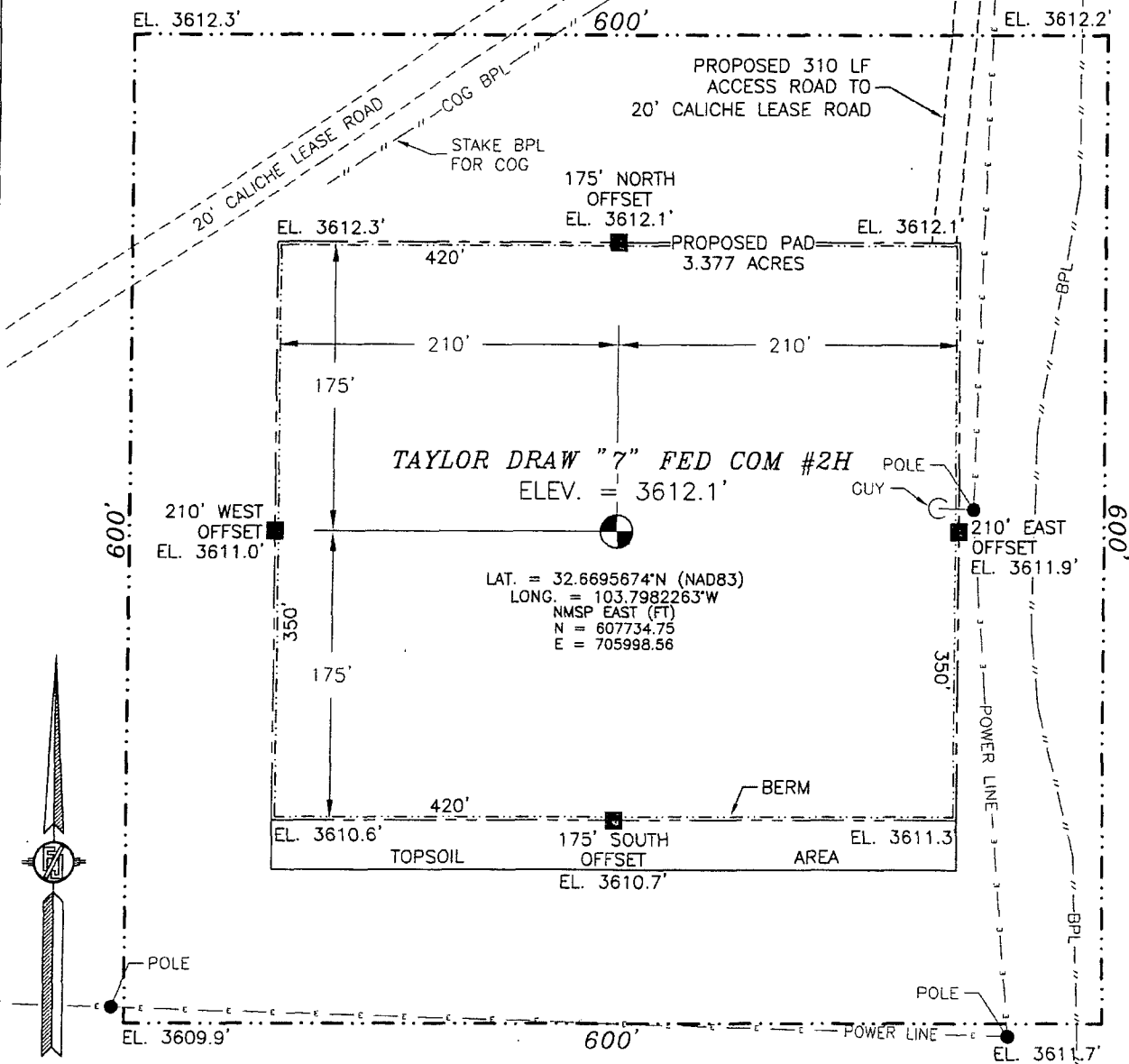
SURVEY NO. 2576B

AUG 08 2014

SECTION 7, TOWNSHIP 19 SOUTH, RANGE 32 EAST, N.M.P.M.  
LEA COUNTY, STATE OF NEW MEXICO

SITE MAP

NOTE: LATITUDE AND LONGITUDE COORDINATES ARE SHOWN USING THE NORTH AMERICAN DATUM OF 1983 (NAD83). LISTED NEW MEXICO STATE PLANE EAST COORDINATES ARE GRID (NAD83). BASIS OF BEARING AND DISTANCES USED ARE NEW MEXICO STATE PLANE EAST COORDINATES MODIFIED TO THE SURFACE



010 50 100 200

SCALE 1" = 100'

DIRECTIONS TO LOCATION

FROM THE INTERSECTION OF CR L126 (MALJAMAR ROAD) AND CR 248 (LUSK PLANT ROAD) GO NORTH ON CR L126 1.5 MILES, TURN LEFT ON CALICHE ROAD OVER CATTLE GUARD ABOUT 325' TO ROAD INTERSECTION ON LEFT (SOUTH). START PROPOSED ROAD, GO SOUTH 310' TO NORTHEAST CORNER OF PAD.

DEVON ENERGY PRODUCTION COMPANY, L.P.

**TAYLOR DRAW "7" FED COM #2H**  
LOCATED 665 FT. FROM THE SOUTH LINE  
AND 375 FT. FROM THE EAST LINE OF  
SECTION 7, TOWNSHIP 19 SOUTH,  
RANGE 32 EAST, N.M.P.M.  
LEA COUNTY, STATE OF NEW MEXICO

MARCH 17, 2014

SURVEY NO. 2576B

MADRON SURVEYING, INC.

301 SOUTH CANAL  
(575) 234-3341

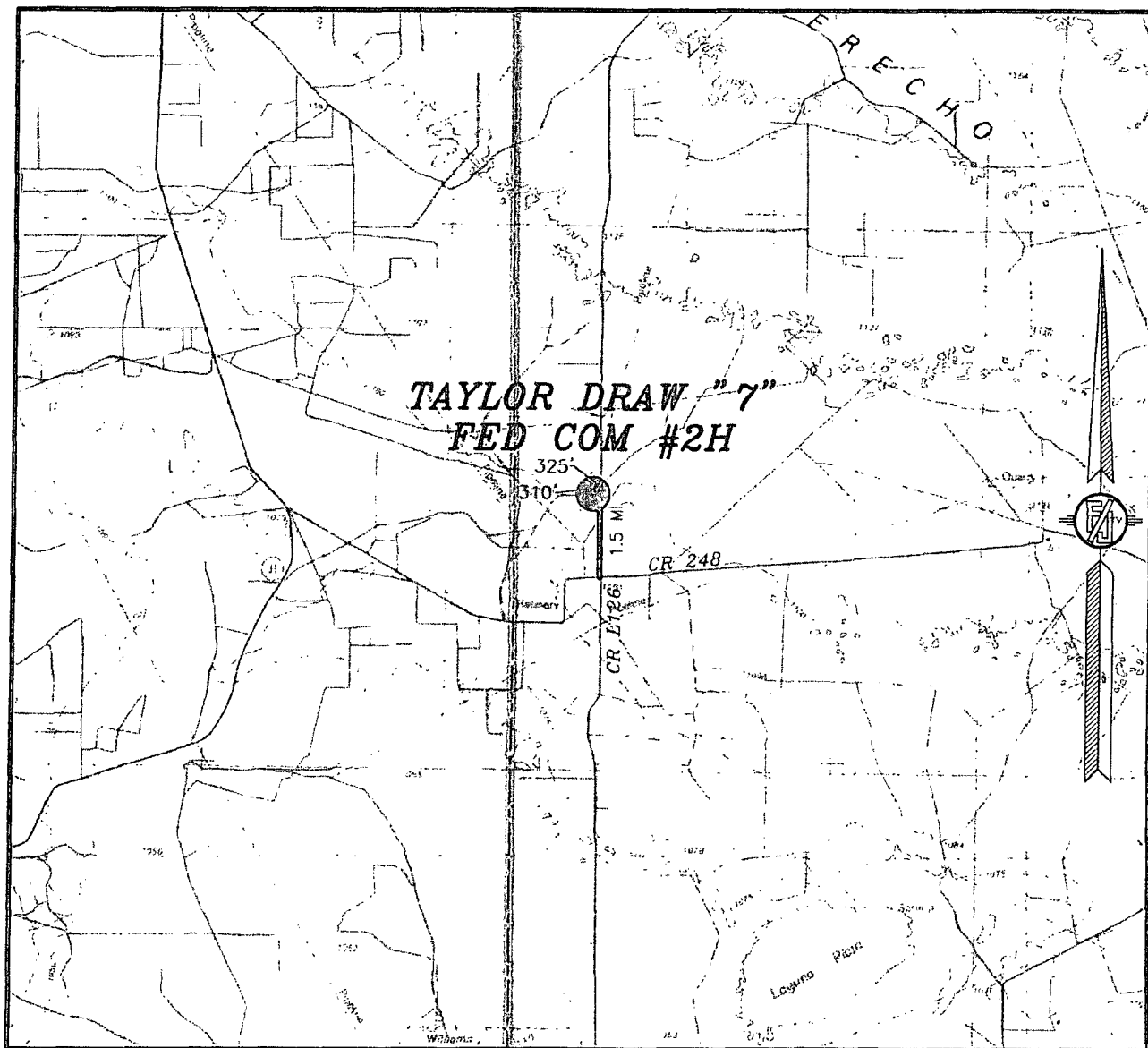
CARLSBAD, NEW MEXICO

NOT TO SCALE

MARCH 17, 2014

MADRON SURVEYING, INC. 301 SOUTH CANAL CARLSBAD, NEW MEXICO  
(575) 234-3341

SECTION 7, TOWNSHIP 19 SOUTH, RANGE 32 EAST, N.M.P.M.  
LEA COUNTY, STATE OF NEW MEXICO  
VICINITY MAP



NOT TO SCALE

DEVON ENERGY PRODUCTION COMPANY, L.P.

**TAYLOR DRAW "7" FED COM #2H**  
LOCATED 665 FT. FROM THE SOUTH LINE  
AND 375 FT. FROM THE EAST LINE OF  
SECTION 7, TOWNSHIP 19 SOUTH,  
RANGE 32 EAST, N.M.P.M.  
LEA COUNTY, STATE OF NEW MEXICO

**DIRECTIONS TO LOCATION**

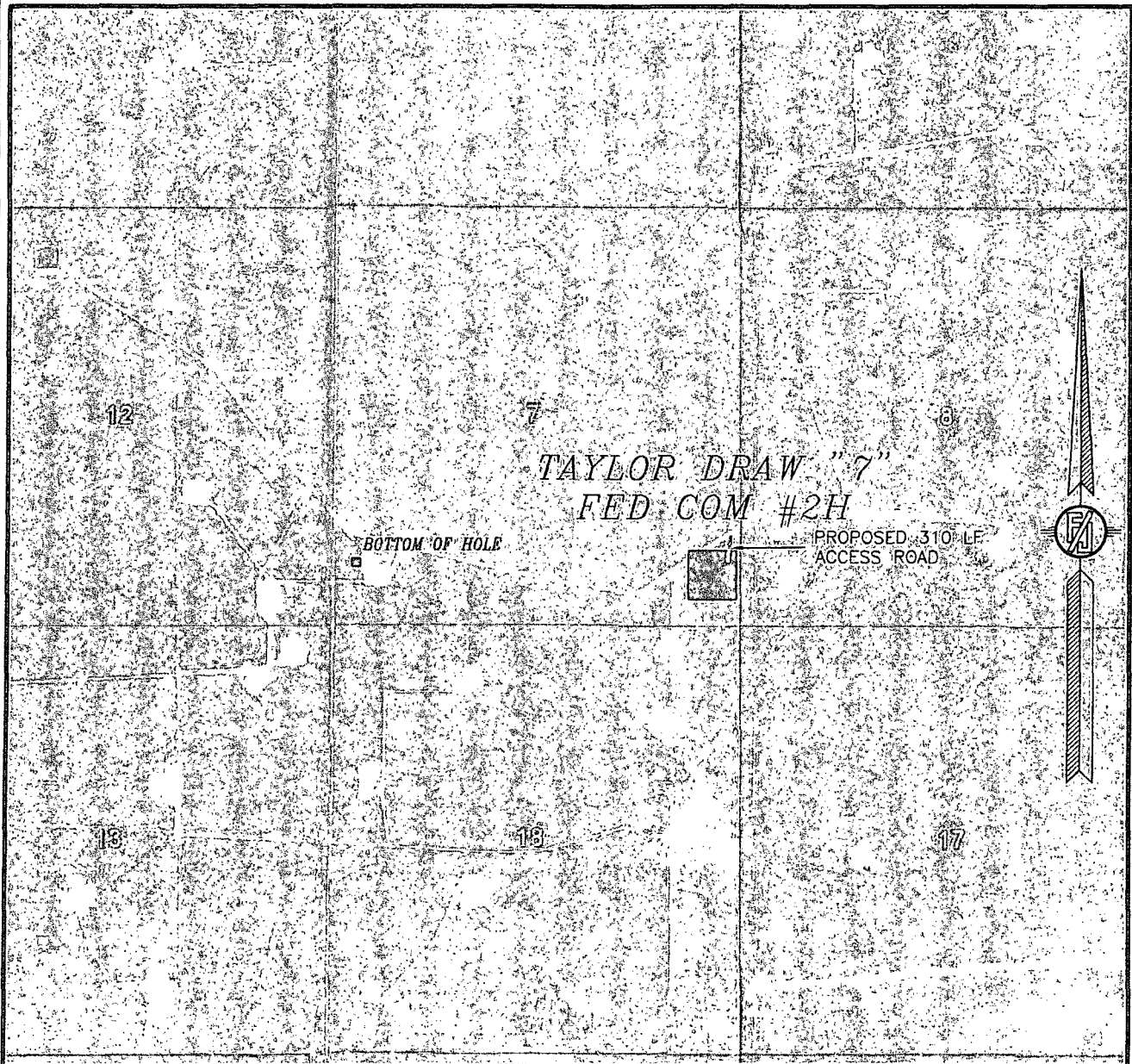
FROM THE INTERSECTION OF CR L126 (MALJAMAR ROAD) AND CR 248 (LUSK PLANT ROAD) GO NORTH ON CR L126 1.5 MILES. TURN LEFT ON CALICHE ROAD OVER CATTLE GUARD ABOUT 325' TO ROAD INTERSECTION ON LEFT (SOUTH). START PROPOSED ROAD, GO SOUTH 310' TO NORTHEAST CORNER OF PAD.

MARCH 17, 2014

MADRON SURVEYING, INC. 301 SOUTH CANAL  
(575) 231-3341

SURVEY NO. 2576B  
CARLSBAD, NEW MEXICO

SECTION 7, TOWNSHIP 19 SOUTH, RANGE 32 EAST, N.M.P.M.  
LEA COUNTY, STATE OF NEW MEXICO  
AERIAL PHOTO



NOT TO SCALE  
AERIAL PHOTO:  
GOOGLE EARTH  
MARCH 2012

DEVON ENERGY PRODUCTION COMPANY, L.P.

**TAYLOR DRAW "7" FED COM #2H**

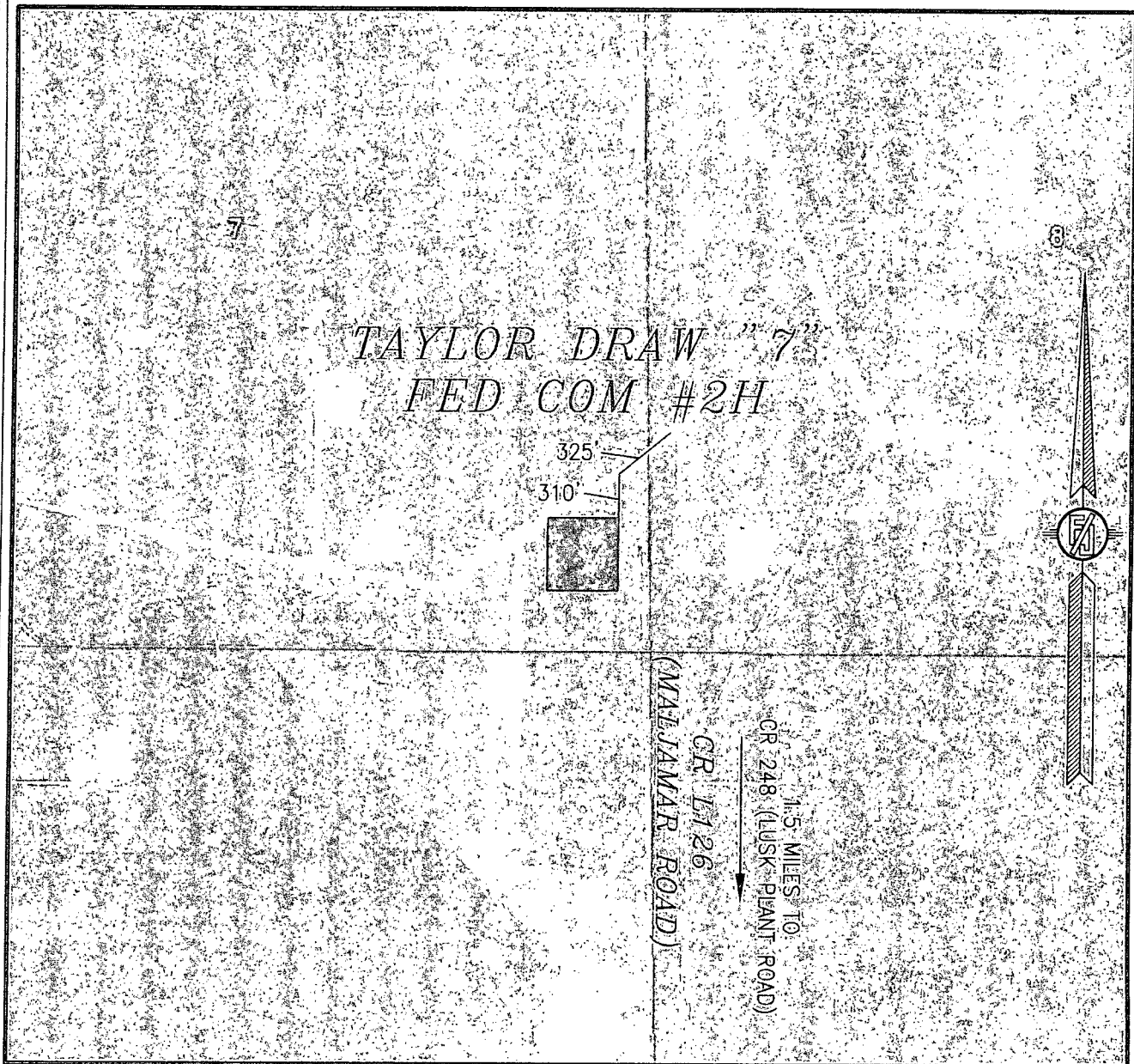
LOCATED 665 FT. FROM THE SOUTH LINE  
AND 375 FT. FROM THE EAST LINE OF  
SECTION 7, TOWNSHIP 19 SOUTH,  
RANGE 32 EAST, N.M.P.M.  
LEA COUNTY, STATE OF NEW MEXICO

MARCH 17, 2014

SURVEY NO. 2576B

MADRON SURVEYING, INC. 301 SOUTH CANAL (575) 234-3341 CARLSBAD, NEW MEXICO

SECTION 7, TOWNSHIP 19 SOUTH, RANGE 32 EAST, N.M.P.M.  
LEA COUNTY, STATE OF NEW MEXICO  
ACCESS AERIAL ROUTE MAP



NOT TO SCALE  
AERIAL PHOTO:  
GOOGLE EARTH  
MARCH 2012

DEVON ENERGY PRODUCTION COMPANY, L.P.

**TAYLOR DRAW "7" FED COM #2H**

LOCATED 665 FT. FROM THE SOUTH LINE  
AND 375 FT. FROM THE EAST LINE OF  
SECTION 7, TOWNSHIP 19 SOUTH,  
RANGE 32 EAST, N.M.P.M.  
LEA COUNTY, STATE OF NEW MEXICO

MARCH 17, 2014

SURVEY NO. 2576B

MADRON SURVEYING, INC. 301 SOUTH CANAL (575) 234-3341 CARLSBAD, NEW MEXICO

