

District I  
1625 N. French Dr., Hobbs, NM 88240  
Phone: (575) 393-6161 Fax: (575) 393-0720  
District II  
811 S. First St., Artesia, NM 88210  
Phone: (575) 748-1283 Fax: (575) 748-9720  
District III  
1000 Rio Brazos Road, Aztec, NM 87410  
Phone: (505) 334-6178 Fax: (505) 334-6170  
District IV  
1220 S. St. Francis Dr., Santa Fe, NM 87505  
Phone: (505) 476-3460 Fax: (505) 476-3462

State of New Mexico  
Energy, Minerals & Natural Resources Department  
OIL CONSERVATION DIVISION  
1220 South St. Francis Dr.  
Santa Fe, NM 87505

HOBBS OCD

JUL 31 2014

RECEIVED

Form C-102  
Revised August 1, 2011  
Submit one copy to appropriate  
District Office

☐ AMENDED REPORT

WELL LOCATION AND ACREAGE DEDICATION PLAT

<sup>1</sup> API Number <b>30-025-42054</b>	<sup>2</sup> Pool Code <b>50930 98044 SWD</b>	<sup>3</sup> Pool Name <b>Devonian- Ellenberger</b> <b>Rattlesnake Flat Delaware</b>
<sup>4</sup> Property Code <b>3135 09</b>	<sup>5</sup> Property Name <b>RATTLESNAKE SWD</b>	<sup>6</sup> Well Number <b>1</b>
<sup>7</sup> OGRID No. <b>6137</b>	<sup>8</sup> Operator Name <b>DEVON ENERGY PRODUCTION COMPANY, L.P.</b>	<sup>9</sup> Elevation <b>3283.4</b>

<sup>10</sup> Surface Location

UL or lot no.	Section	Township	Range	Lot Idn	Feet from the	North/South line	Feet from the	East/West line	County
<b>H</b>	<b>16</b>	<b>26 S</b>	<b>34 E</b>		<b>2260</b>	<b>NORTH</b>	<b>150</b>	<b>EAST</b>	<b>LEA</b>

<sup>11</sup> Bottom Hole Location If Different From Surface

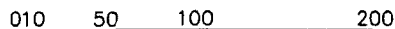
UL or lot no.	Section	Township	Range	Lot Idn	Feet from the	North/South line	Feet from the	East/West line	County
<sup>12</sup> Dedicated Acres <b>40 ac</b>	<sup>13</sup> Joint or Infill	<sup>14</sup> Consolidation Code	<sup>15</sup> Order No.						

No allowable will be assigned to this completion until all interests have been consolidated or a non-standard unit has been approved by the division.

N89°29'36"E 2644.89 FT		N89°29'36"E 2644.89 FT	
NW CORNER SEC. 16 LAT. = 32.0506956°N LONG. = 103.4833738°W NMSP EAST (FT) N = 383217.60 E = 804673.98	N/4 CORNER SEC. 16 SCALED	NE CORNER SEC. 16 LAT. = 32.0507085°N LONG. = 103.4663040°W NMSP EAST (FT) N = 383264.37 E = 809982.75	
W/4 CORNER SEC. 16 LAT. = 32.0434438°N LONG. = 103.4833711°W NMSP EAST (FT) N = 380579.49 E = 804695.60		E/4 CORNER SEC. 16 LAT. = 32.0434531°N LONG. = 103.4662973°W NMSP EAST (FT) N = 380624.94 E = 809985.99	
SW CORNER SEC. 16 LAT. = 32.0361753°N LONG. = 103.4833609°W NMSP EAST (FT) N = 377935.32 E = 804719.56		SE CORNER SEC. 16 LAT. = 32.0361926°N LONG. = 103.4662911°W NMSP EAST (FT) N = 377983.66 E = 810009.13	
S/4 CORNER SEC. 16 LAT. = 32.0361857°N LONG. = 103.4748110°W NMSP EAST (FT) N = 377960.09 E = 807368.98			
NOTE: LATITUDE AND LONGITUDE COORDINATES ARE SHOWN USING THE NORTH AMERICAN DATUM OF 1983 (NAD83). LISTED NEW MEXICO STATE PLANE EAST COORDINATES ARE GRID (NAD83). BASIS OF BEARING AND DISTANCES USED ARE NEW MEXICO STATE PLANE EAST COORDINATES MODIFIED TO THE SURFACE.			
S89°27'52"W 2649.93 FT		S89°29'19"W 2640.66 FT	
N00°28'10"W 2638.60 FT		S00°30'16"E 2639.93 FT	
N00°31'09"W 2644.68 FT		S00°30'07"E 2641.78 FT	
<b>RATTLESNAKE SWD #1</b> ELEV. = 3283.4' LAT. = 32.0444969°N (NAD83) LONG. = 103.4667825°W NMSP EAST (FT) N = 381003.08 E = 809832.60 <b>SURFACE LOCATION</b> 150'			
<b>17 OPERATOR CERTIFICATION</b> I hereby certify that the information contained herein is true and complete to the best of my knowledge and belief, and that this organization either owns a working interest or released mineral interest in the land including the proposed bottom hole location or has a right to drill this well at this location pursuant to a contract with an owner of such a mineral or working interest, or to a voluntary pooling agreement or a compulsory pooling order heretofore entered by the division. <b>Trina C. Couch</b> 7/30/14 Signature Date Trina C. Couch, Regulatory Analyst Printed Name trina.couch@dmn.com E-mail Address			
<b>18 SURVEYOR CERTIFICATION</b> I hereby certify that the well location shown on this plat was plotted from field notes of actual surveys made by me or under my supervision, and that the same are true and correct to the best of my belief. MAX 14/2014 Date of Survey 12797 Signature of Professional Surveyor Certificate Number FLENOCE BARAMILLO, PLS 12797 SURVEY NO. 2918			

AUG 19 2014

NOTE: LATITUDE AND LONGITUDE COORDINATES ARE SHOWN USING THE NORTH AMERICAN DATUM OF 1983 (NAD83). LISTED NEW MEXICO STATE PLANE EAST COORDINATES ARE GRID (NAD83). BASIS OF BEARING AND DISTANCES USED ARE NEW MEXICO STATE PLANE EAST COORDINATES MODIFIED TO THE SURFACE.



SCALE 1" = 100'

### DIRECTIONS TO LOCATION

FROM STATE HWY. 128 AND CR. #2 (BATTLE AXE) GO SOUTH AND WEST ON CR. #2 12.0 MILES, TURN LEFT ON CALICHE ROAD AND GO SOUTH 0.6 MILES, TURN LEFT AND GO EAST 3.0 MILES, TURN RIGHT AND GO SOUTHEAST 1.68 MILES, TURN LEFT ON SANDY TRAIL ROAD AND GO EAST 767' AND THE SOUTHWEST CORNER OF PROPOSED PAD IS NORTH 12'.

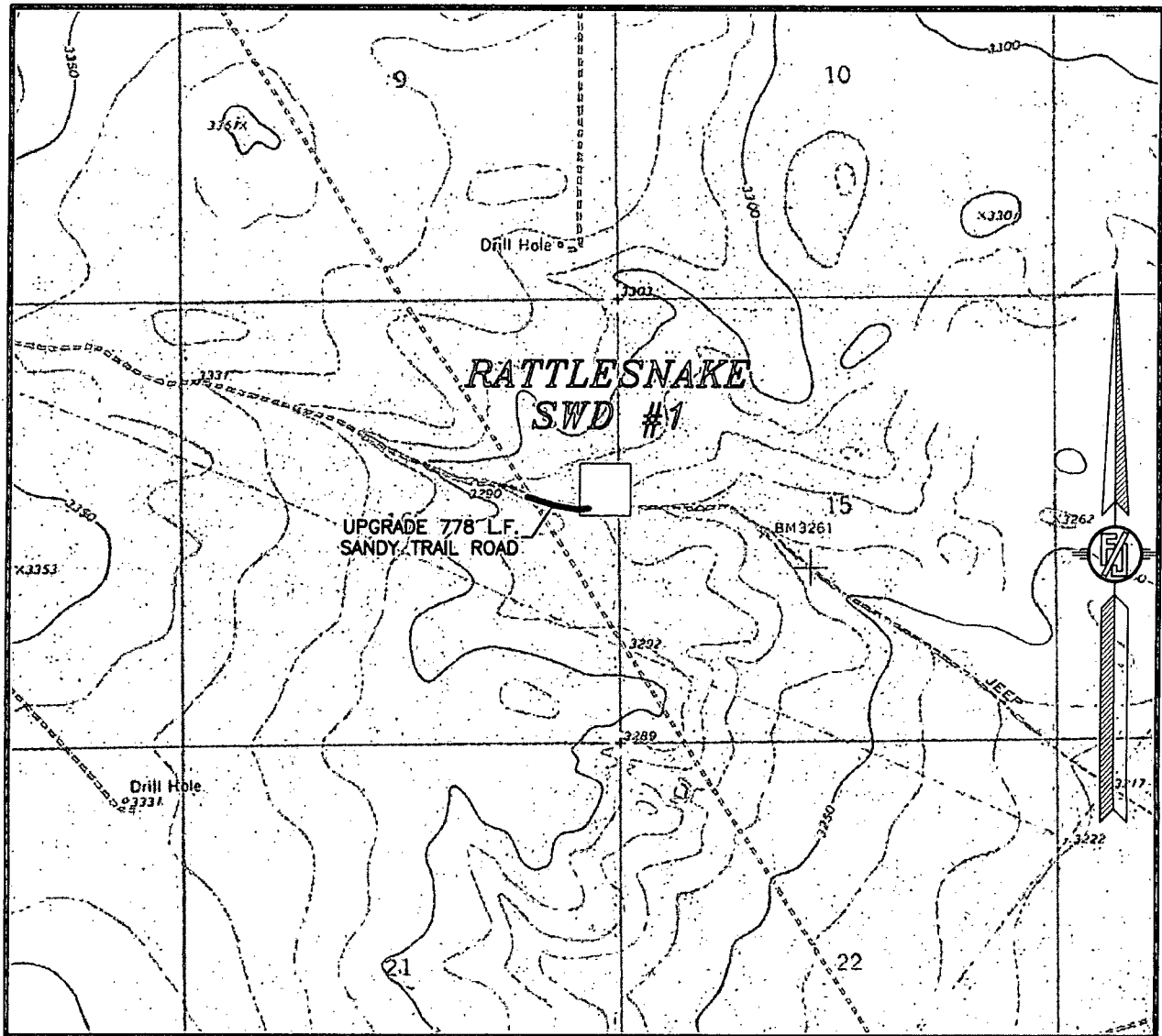
LOCATED 2260 FT. FROM THE NORTH LINE  
AND 150 FT. FROM THE EAST LINE OF  
SECTION 16, TOWNSHIP 26 SOUTH,  
RANGE 34 EAST, N.M.P.M.  
LEA COUNTY, STATE OF NEW MEXICO

MAY 5, 2014

*SURVEY NO. 2918*

MADRON SURVEYING, INC. 301 SOUTH CANAL CARLSBAD, NEW MEXICO  
(575) 234-3341

SECTION 16, TOWNSHIP 26 SOUTH, RANGE 34 EAST, N.M.P.M.  
LEA COUNTY, STATE OF NEW MEXICO  
LOCATION VERIFICATION MAP



USGS QUAD MAP:  
ANDREWS PLACE

NOT TO SCALE

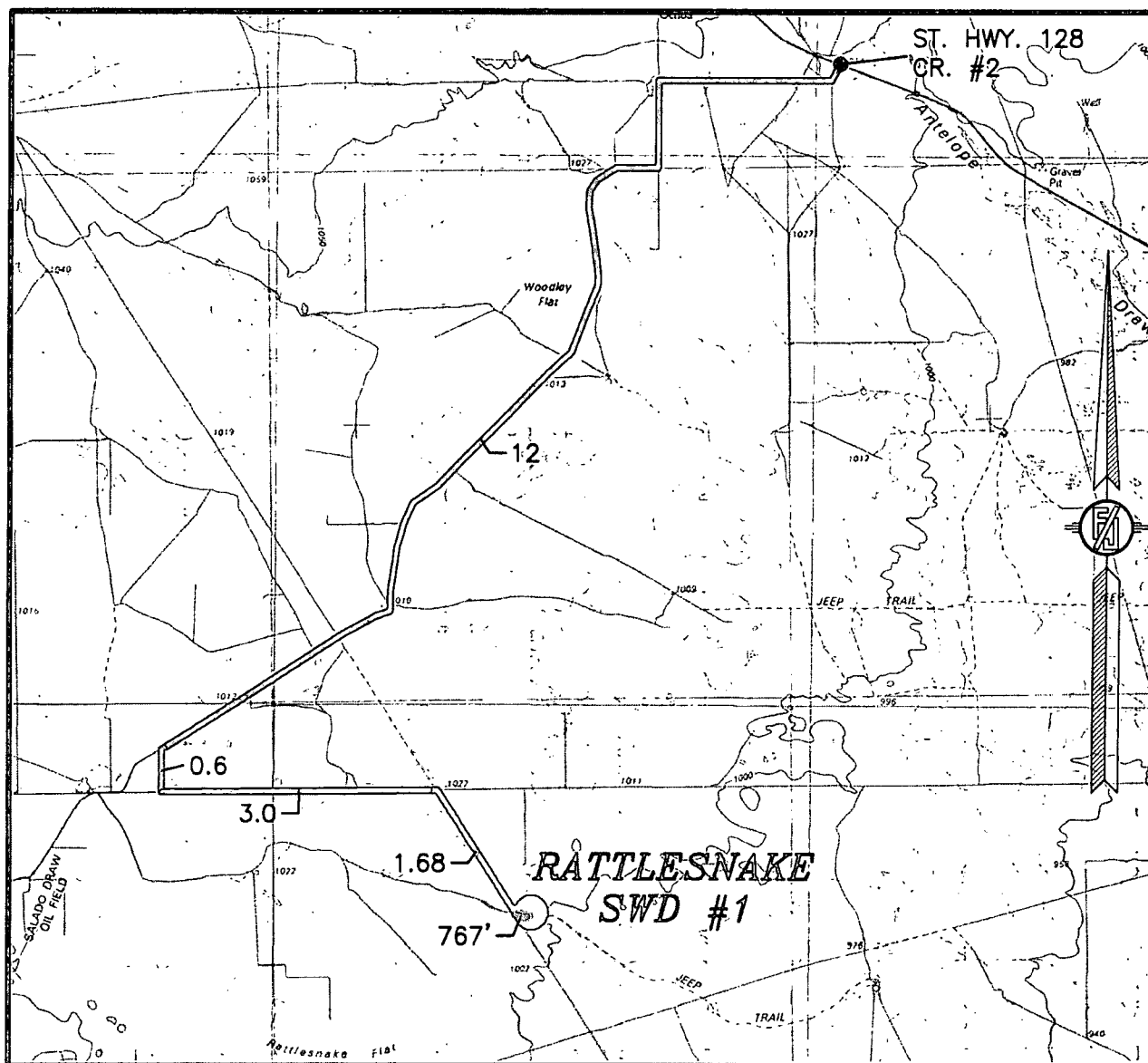
DEVON ENERGY PRODUCTION COMPANY, L.P.  
**RATTLESNAKE SWD #1**  
LOCATED 2260 FT. FROM THE NORTH LINE  
AND 150 FT. FROM THE EAST LINE OF  
SECTION 16, TOWNSHIP 26 SOUTH,  
RANGE 34 EAST, N.M.P.M.  
LEA COUNTY, STATE OF NEW MEXICO

MAY 5, 2014

SURVEY NO. 2918

MADRON SURVEYING, INC. 301 SOUTH CANAL (575) 234-3341 CARLSBAD, NEW MEXICO

SECTION 16, TOWNSHIP 26 SOUTH, RANGE 34 EAST, N.M.P.M.  
LEA COUNTY, STATE OF NEW MEXICO  
VICINITY MAP



DISTANCES IN MILES

NOT TO SCALE

**DIRECTIONS TO LOCATION**

FROM STATE HWY. 128 AND CR. #2 (BATTLE AXE) GO SOUTH AND WEST ON CR. #2 12.0 MILES, TURN LEFT ON CALICHE ROAD AND GO SOUTH 0.6 MILES, TURN LEFT AND GO EAST 3.0 MILES, TURN RIGHT AND GO SOUTHEAST 1.68 MILES, TURN LEFT ON SANDY TRAIL ROAD AND GO EAST 767' AND THE SOUTHWEST CORNER OF PROPOSED PAD IS NORTH 12'.

DEVON ENERGY PRODUCTION COMPANY, L.P.  
**RATTLESNAKE SWD #1**

LOCATED 2260 FT. FROM THE NORTH LINE  
AND 150 FT. FROM THE EAST LINE OF  
SECTION 16, TOWNSHIP 26 SOUTH,  
RANGE 34 EAST, N.M.P.M.  
LEA COUNTY, STATE OF NEW MEXICO

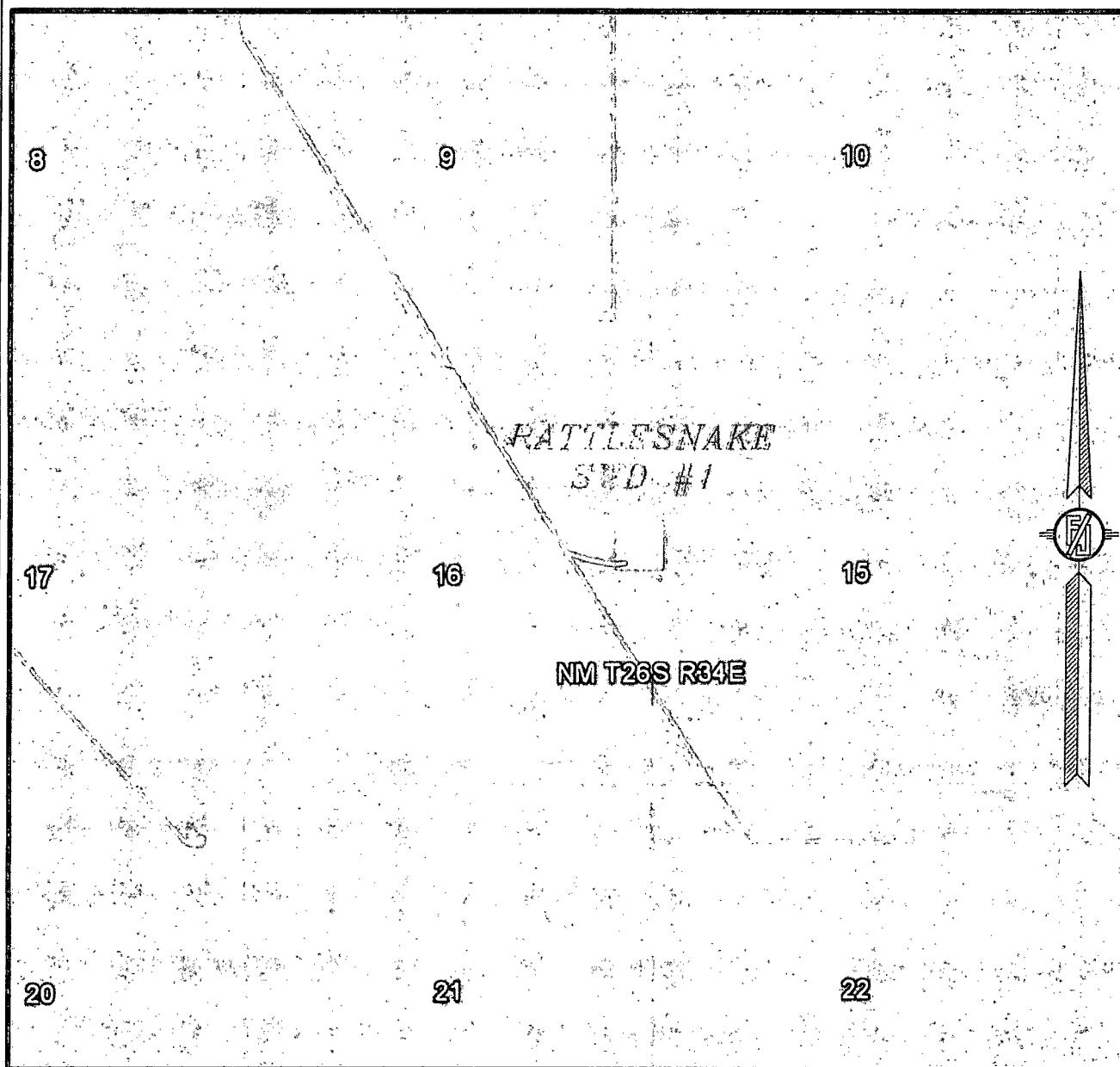
MAY 14, 2014

SURVEY NO. 2918

MADRON SURVEYING, INC. 301 SOUTH CANAL  
(575) 234-3341

CARLSBAD, NEW MEXICO

SECTION 16, TOWNSHIP 26 SOUTH, RANGE 34 EAST, N.M.P.M.  
LEA COUNTY, STATE OF NEW MEXICO  
AERIAL PHOTO



NOT TO SCALE  
AERIAL PHOTO:  
GOOGLE EARTH  
APRIL 2013

DEVON ENERGY PRODUCTION COMPANY, L.P.

**RATTLESNAKE SWD #1**

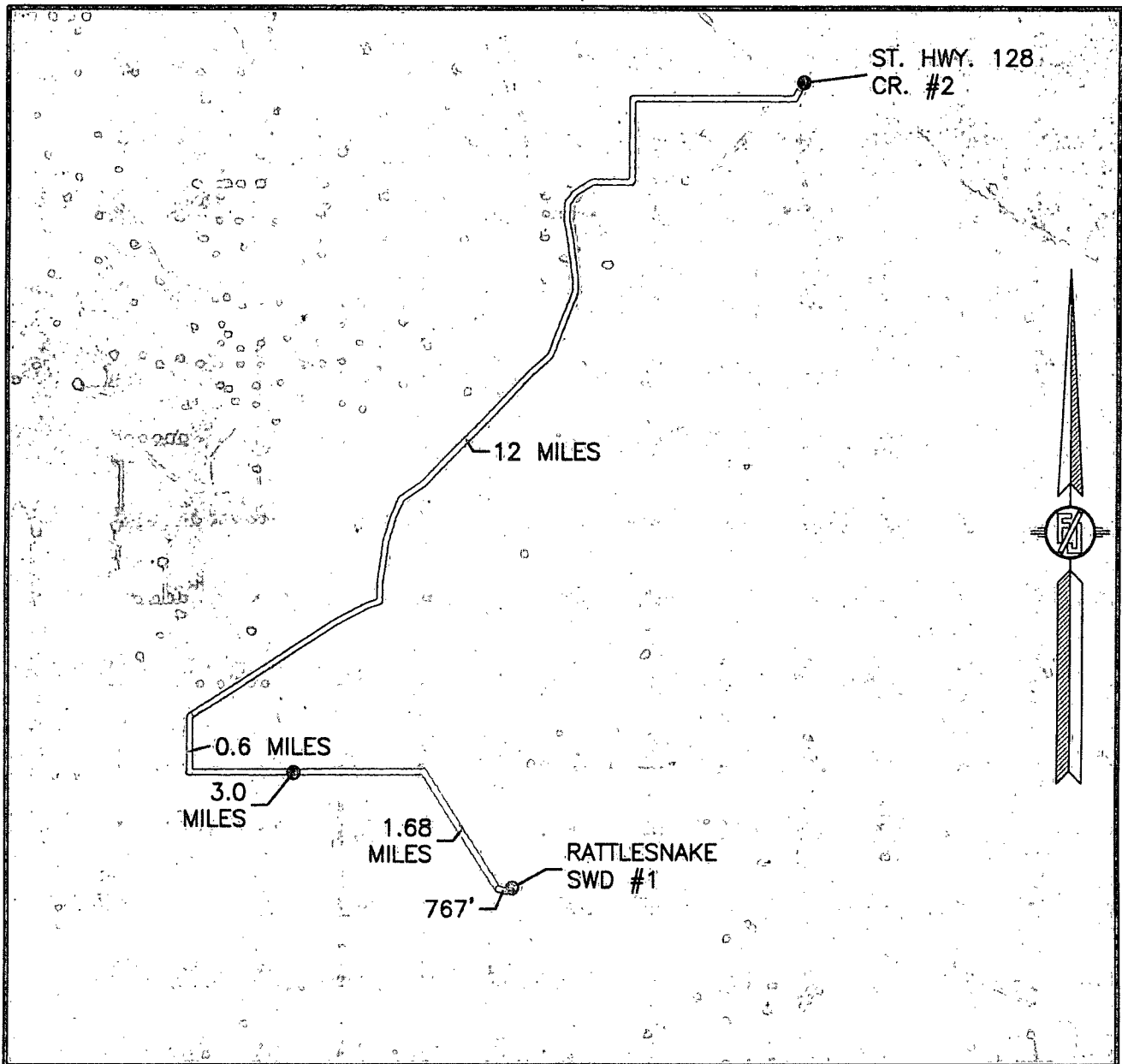
LOCATED 2260 FT. FROM THE NORTH LINE  
AND 150 FT. FROM THE EAST LINE OF  
SECTION 16, TOWNSHIP 26 SOUTH,  
RANGE 34 EAST, N.M.P.M.  
LEA COUNTY, STATE OF NEW MEXICO

MAY 5, 2014

SURVEY NO. 2918

MADRON SURVEYING, INC. 301 SOUTH CANAL (575) 234-3341 CARLSBAD, NEW MEXICO

SECTION 16, TOWNSHIP 26 SOUTH, RANGE 34 EAST, N.M.P.M.  
LEA COUNTY, STATE OF NEW MEXICO  
**AERIAL ACCESS ROUTE MAP**



NOT TO SCALE  
AERIAL PHOTO:  
GOOGLE EARTH  
APRIL 2013

**DEVON ENERGY PRODUCTION COMPANY, L.P.**  
**RATTLESNAKE SWD #1**

LOCATED 2260 FT. FROM THE NORTH LINE  
AND 150 FT. FROM THE EAST LINE OF  
SECTION 16, TOWNSHIP 26 SOUTH,  
RANGE 34 EAST, N.M.P.M.  
LEA COUNTY, STATE OF NEW MEXICO

MAY 5, 2014

SURVEY NO. 2918

MADRON SURVEYING, INC. 301 SOUTH CANAL (575) 234-3341 CARLSBAD, NEW MEXICO