

District I
1625 N. French Dr., Hobbs, NM 88240
Phone: (575) 393-6161 Fax: (575) 393-0720
District II
811 S. First St., Artesia, NM 88210
Phone: (575) 748-1283 Fax: (575) 748-9720
District III
1000 Rio Brazos Road, Aztec, NM 87410
Phone: (505) 334-6178 Fax: (505) 334-6170
District IV
1220 S. St. Francis Dr., Santa Fe, NM 87505
Phone: (505) 476-3460 Fax: (505) 476-3462

State of New Mexico
Energy, Minerals & Natural Resources Department
OIL CONSERVATION DIVISION
1220 South St. Francis Dr.
Santa Fe, NM 87505

Form C-102
Revised August 1, 2011
Submit one copy to appropriate
District Office

☐ AMENDED REPORT

AUG 25 2014

WELL LOCATION AND ACREAGE DEDICATION

¹ API Number 30-025-42070	² Pool Code 61780	³ Pool Name Vacuum; Abo Reef
⁴ Property Code 31158	⁵ Property Name VACUUM ABO UNIT	⁶ Well Number 687
⁷ OGRID No. 217817	⁸ Operator Name ConocoPhillips Company	⁹ Elevation 3913'

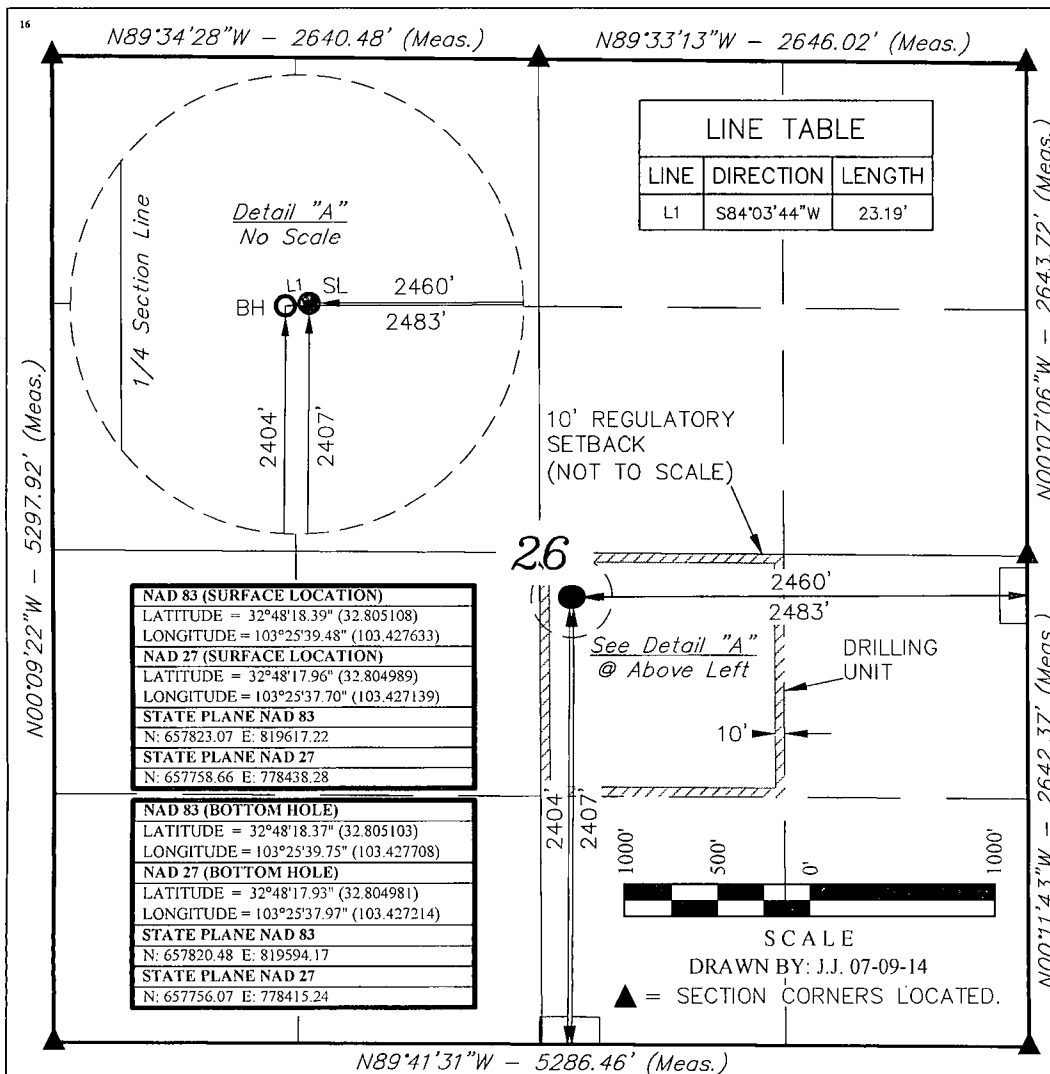
¹⁰ Surface Location

UL or lot no.	Section	Township	Range	Lot Idn	Feet from the	North/South line	Feet from the	East/West line	County
J	26	17S	35E		2407	SOUTH	2460	EAST	LEA

¹¹ Bottom Hole Location If Different From Surface

UL or lot no.	Section	Township	Range	Lot Idn	Feet from the	North/South line	Feet from the	East/West line	County
J	26	17S	35E		2404	SOUTH	2483	EAST	LEA
¹² Dedicated Acres 40		¹³ Joint or Infill		¹⁴ Consolidation Code		¹⁵ Order No.			

No allowable will be assigned to this completion until all interests have been consolidated or a non-standard unit has been approved by the division.



¹⁷ OPERATOR
CERTIFICATION

I hereby certify that the information contained herein is true and complete to the best of my knowledge and belief, and that this organization either owns a working interest or unleased mineral interest in the land including the proposed bottom hole location or has a right to drill this well at this location pursuant to a contract with an owner of such a mineral or working interest, or to a voluntary pooling agreement or a compulsory pooling order heretofore entered by the division.

Susan B. Maunder 8/20/14
Signature Date

Susan B. Maunder

Printed Name

Susan.B.Maunder@cop.com

E-mail Address

¹⁸ SURVEYOR
CERTIFICATION

I hereby certify that the well location shown on this plat was plotted from field notes of actual surveys made by me or under my supervision, and that the same is true and correct to the best of my belief.

July 02, 2014

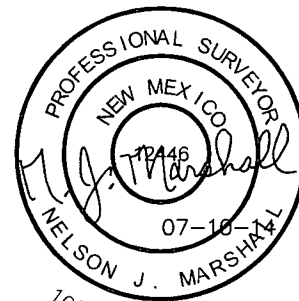
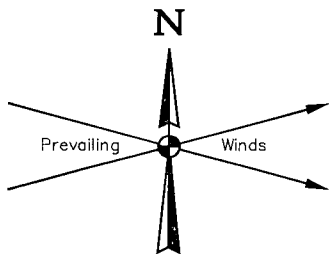
Date of Survey

Signature and Seal of Professional Surveyor:



Certificate Number:

AUG 26 2014

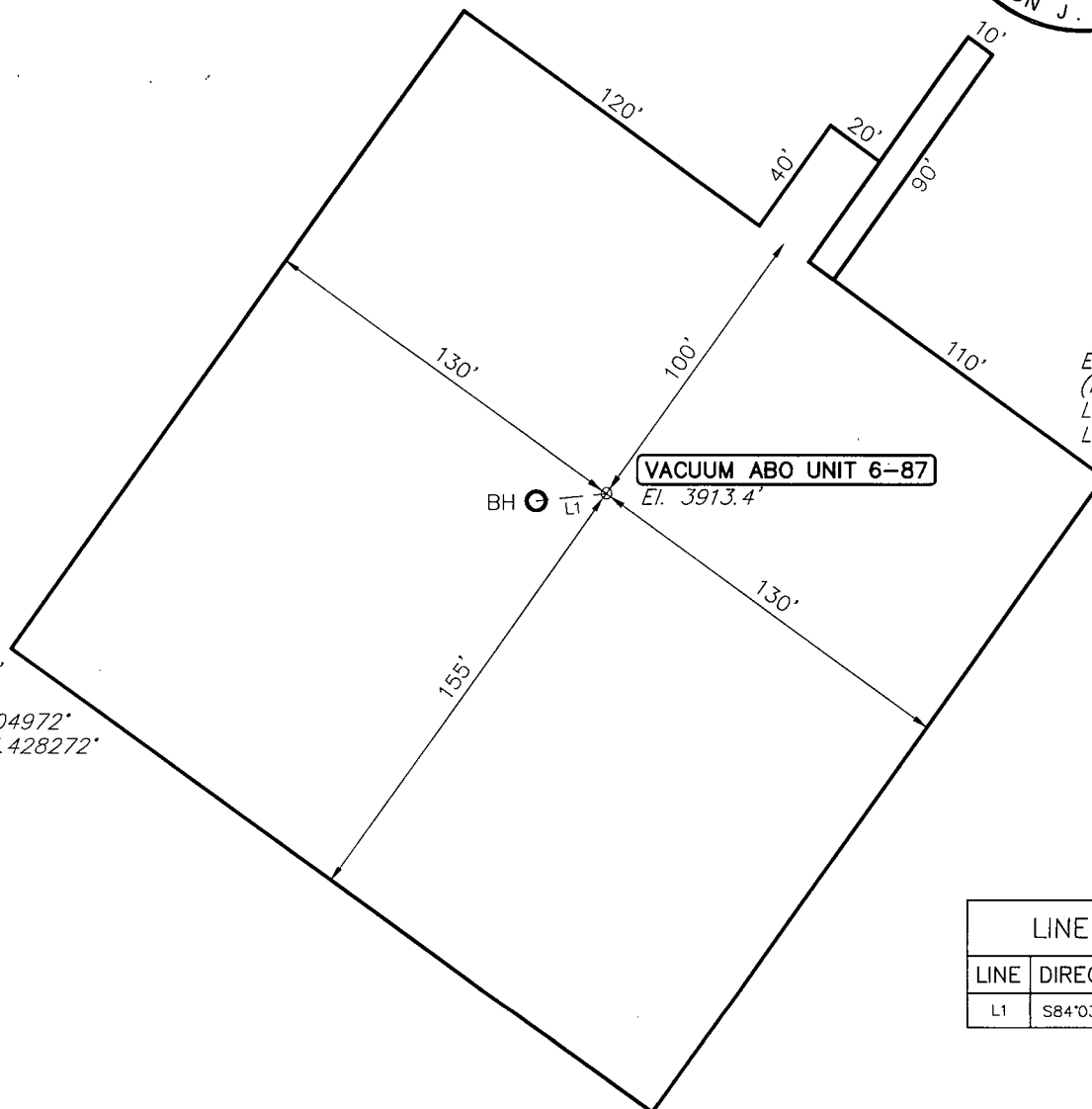


El. 3913.8'
(NAD 83)
Lat: 32.805542°
Long: 103.427789°

El. 3914.0'
(NAD 83)
Lat: 32.805125°
Long: 103.427100°

El. 3911.9'
(NAD 83)
Lat: 32.804972°
Long: 103.428272°

El. 3915.2'
(NAD 83)
Lat: 32.804556°
Long: 103.427586°



LINE TABLE		
LINE	DIRECTION	LENGTH
L1	S84°03'44"W	23.19'

ELEV. UNGRADED GROUND AT LOC. STAKE = 3913.4'

NOTES:

- Flare pit is to be located a min. of 100' from the wellhead.
- Underground utilities shown on this sheet are for visualization purposes only, actual locations to be determined prior to construction.

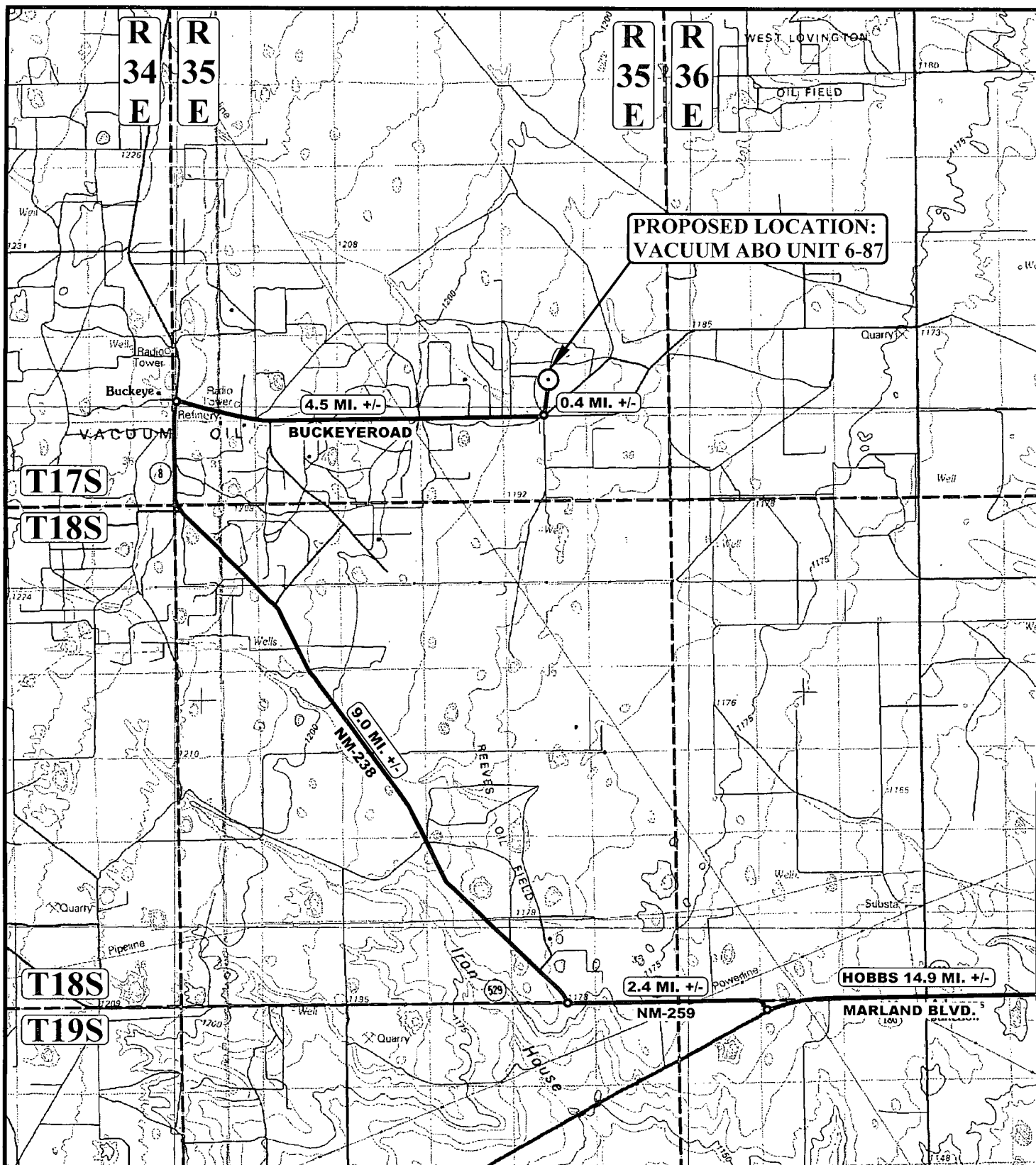
ConocoPhillips Company

**VACUUM ABO UNIT 6-87
SECTION 26, T17S, R35E, N.M.P.M.
2407' FSL 2460' FEL**



UELS, LLC
Corporate Office * 85 South 200 East
Vernal, UT 84078 * (435) 789-1017

DRAWN BY: J.J.	DATE DRAWN: 07-09-14
SCALE: 1" = 60'	REVISED: 00-00-00
LOCATION LAYOUT	FIGURE #1



LEGEND:

○ PROPOSED LOCATION

ConocoPhillips Company

**VACUUM ABO UNIT 6-87
SECTION 26, T17S, R35E, N.M.P.M.
2407' FSL 2460' FEL**



DRAWN BY: L.S.
SCALE: 1:100,000

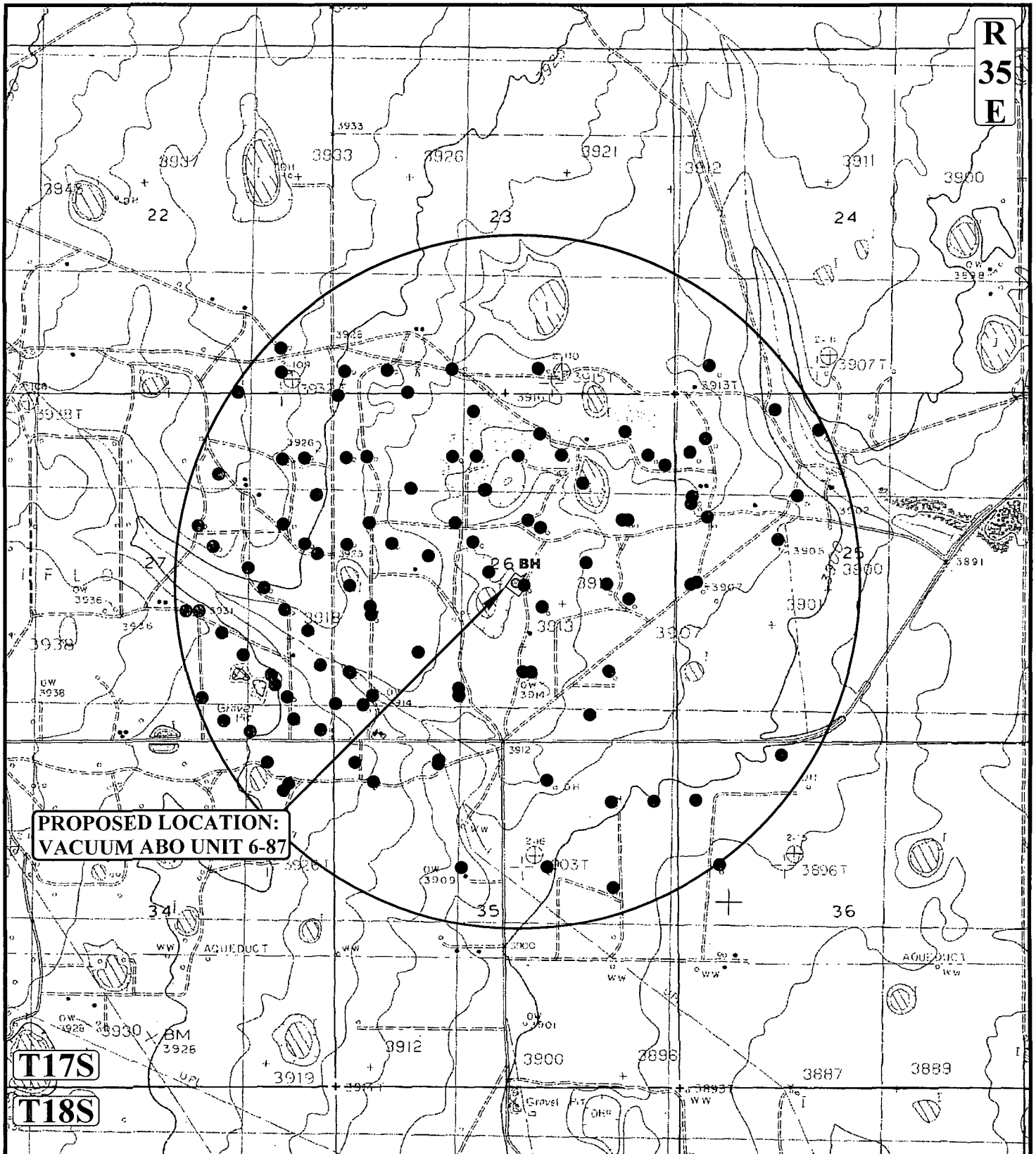
DATE DRAWN: 07-10-14
REVISED: 00-00-00

ACCESS ROAD MAP

TOPO A



UELS, LLC
Corporate Office * 85 South 200 East
Vernal, UT 84078 * (435) 789-1017



**PROPOSED LOCATION:
VACUUM ABO UNIT 6-87**

T17S

T18S

LEGEND:

- DISPOSAL WELLS
- PRODUCING WELLS
- ⊕ SHUT IN WELLS
- ⊕ WATER WELLS
- ⊕ ABANDONED WELLS
- ⊕ TEMPORARILY ABANDONED



UELS, LLC
Corporate Office * 85 South 200 East
Vernal, UT 84078 * (435) 789-1017



ConocoPhillips Company

**VACUUM ABO UNIT 6-87
SECTION 26, T17S, R35E, N.M.P.M.
2407' FSL 2460' FEL**

DRAWN BY: L.S.	DATE DRAWN: 07-10-14
SCALE: 1" = 2000'	REVISED: 00-00-00
WELL PROXIMITY MAP	TOPO C



H₂S Contingency Plan

H₂S Contingency Plan Holders:

Attached is an H₂S Contingency Plan for COPC Permian Drilling working in the West Texas and Southeastern New Mexico areas operated by ConocoPhillips Company.

If you have any questions regarding this plan, please call Tom Samarripa at ConocoPhillips Company, 432.368.1263.

Table of Contents

Section

I. Purpose

II. Scope

III. Procedures

IV. Emergency Equipment and Maintenance

Emergency Equipment Suppliers

General Information

H₂S Safety Equipment and Monitoring Systems

V. Emergency Call List

VI. Public/Media Relations

VII. Public Notification/Evacuation

VIII. Forms/Reports