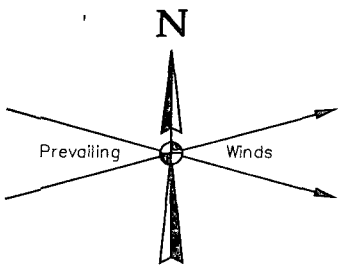
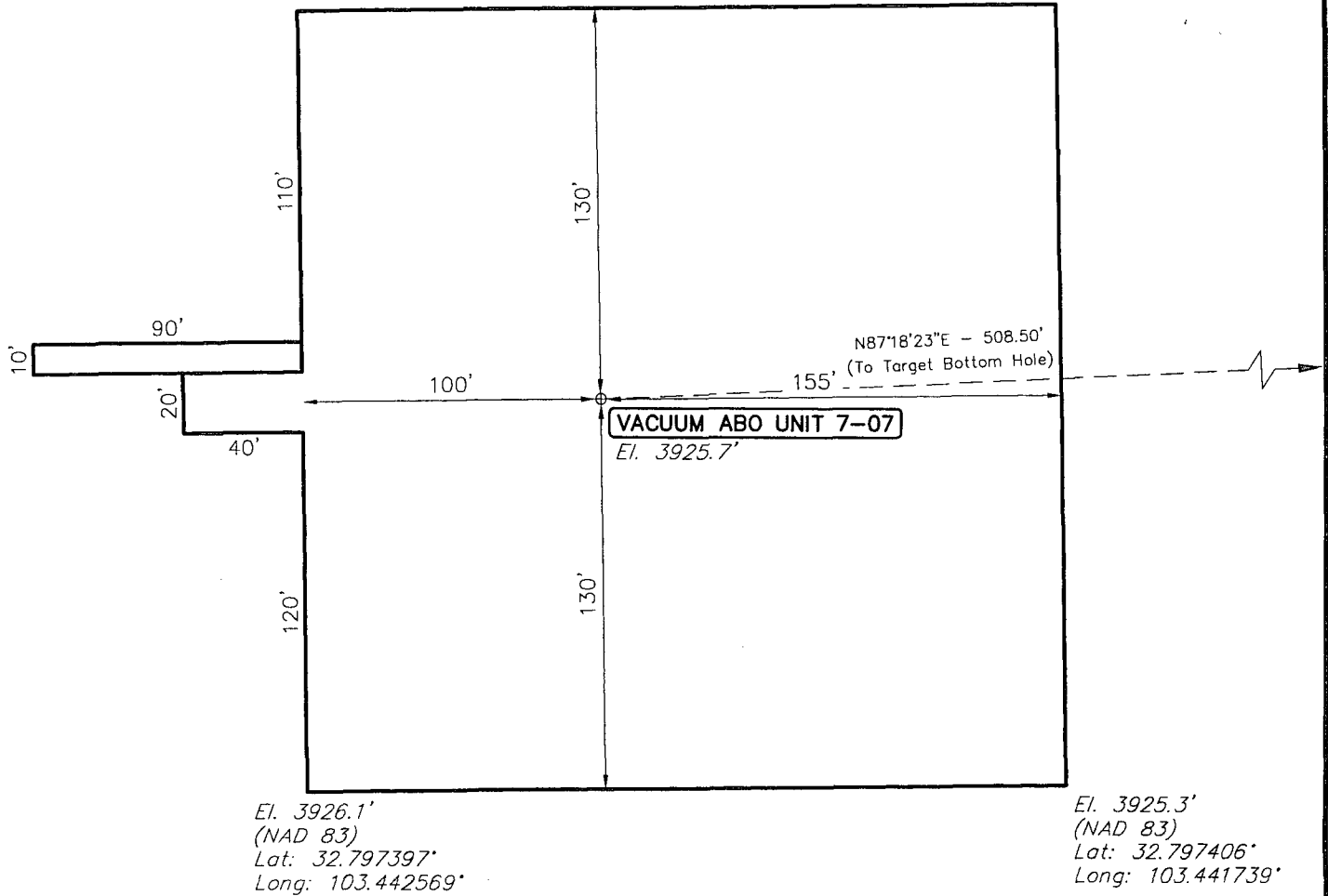


AUG 26 2014



El. 3926.5'
(NAD 83)
Lat: 32.798111°
Long: 103.442581°

El. 3926.1'
(NAD 83)
Lat: 32.798119°
Long: 103.441750°



ELEV. UNGRADED GROUND AT LOC. STAKE = 3925.7'

NOTES:

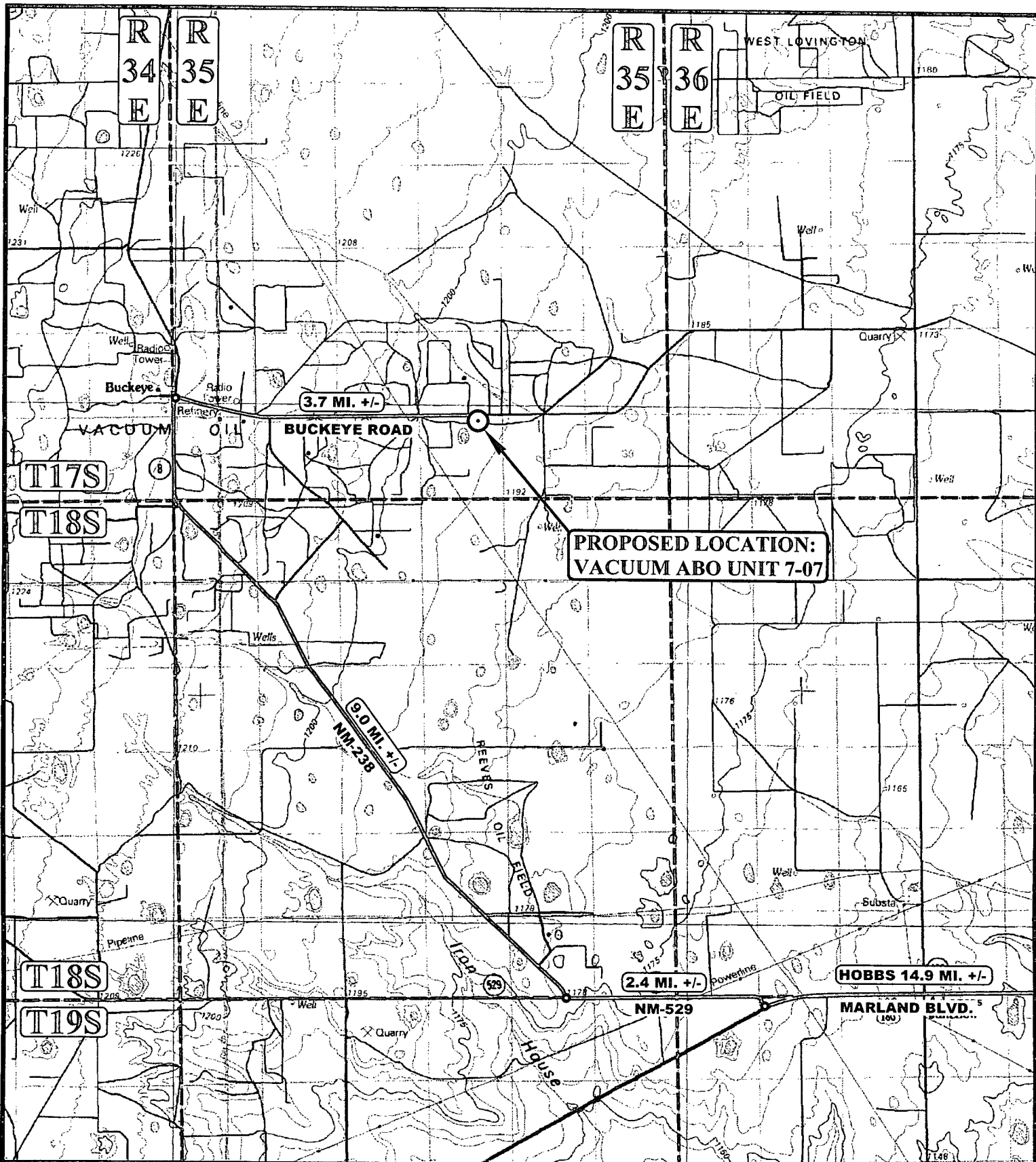
ConocoPhillips Company

VACUUM ABO UNIT 7-07
SECTION 34, T17S, R35E, N.M.P.M.
285' FNL 1674' FEL



UELS, LLC
Corporate Office * 85 South 200 East
Vernal, UT 84078 * (435) 789-1017

DRAWN BY: J.J.	DATE DRAWN: 07-09-14
SCALE: 1" = 60'	REVISED: 00-00-00
LOCATION LAYOUT	FIGURE #1



LEGEND:

⊙ PROPOSED LOCATION

ConocoPhillips Company

VACUUM ABO UNIT 7-07
SECTION 34, T17S, R35E, N.M.P.M.
285' FNL 1674' FEL



UELS, LLC
 Corporate Office * 85 South 200 East
 Vernal, UT 84078 * (435) 789-1017



DRAWN BY: L.S.

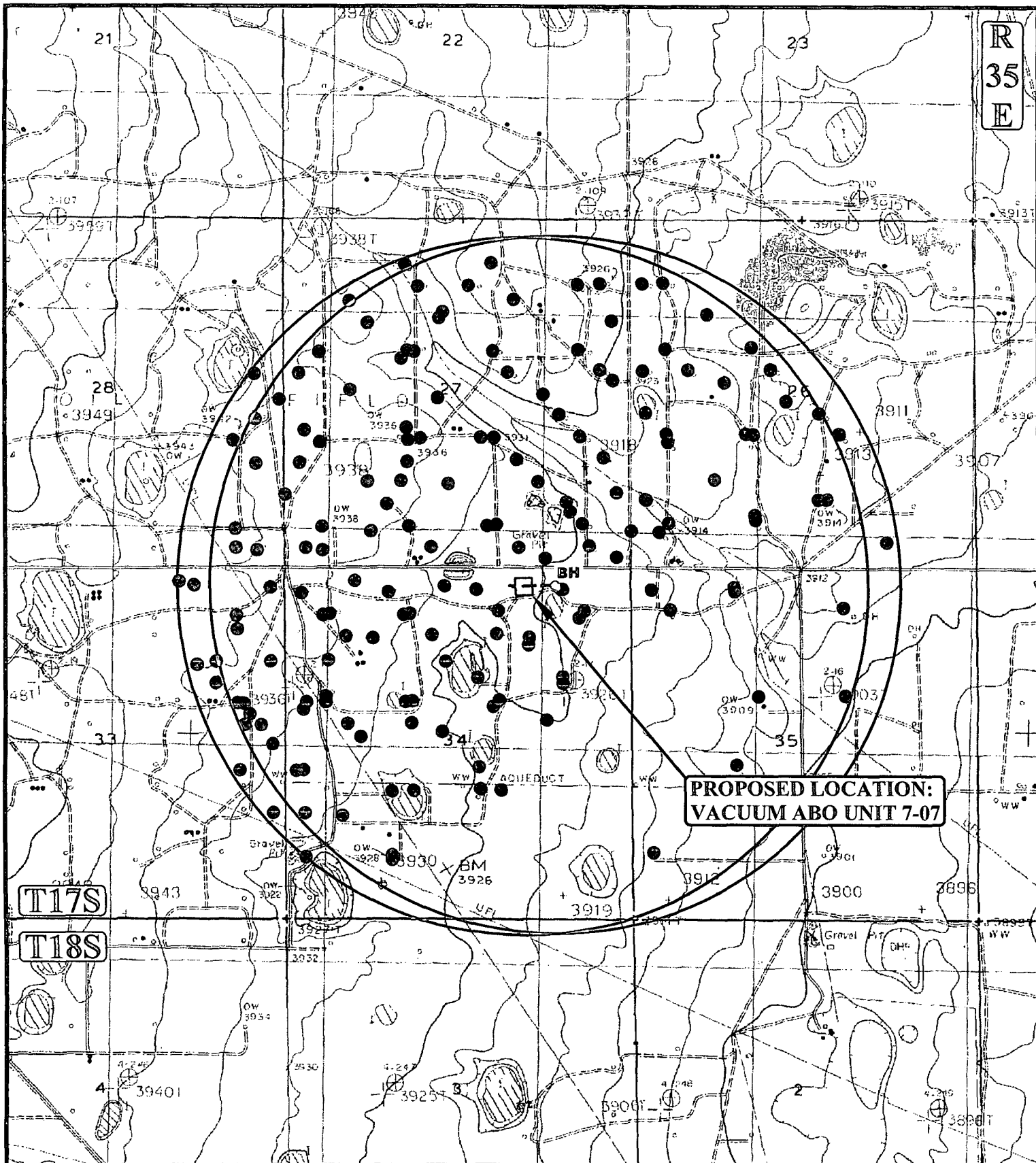
DATE DRAWN: 07-09-14

SCALE: 1:100,000

REVISED: 00-00-00

ACCESS ROAD MAP

TOPO A



LEGEND:

- DISPOSAL WELLS
- PRODUCING WELLS
- ⊕ ABANDONED WELLS
- ⊙ SHUT IN WELLS
- ⊙ TEMPORARILY ABANDONED

ConocoPhillips Company

VACUUM ABO UNIT 7-07
SECTION 34, T17S, R35E, N.M.P.M.
285' FNL 1674' FEL



DRAWN BY: L.S.

DATE DRAWN: 07-09-14

SCALE: 1" = 2000'

REVISED: 00-00-00

WELL PROXIMITY MAP

TOPO C.



UELS, LLC
 Corporate Office * 85 South 200 East
 Vernal, UT 84078 * (435) 789-1017



H₂S Contingency Plan

H₂S Contingency Plan Holders:

Attached is an H₂S Contingency Plan for COPC Permian Drilling working in the West Texas and Southeastern New Mexico areas operated by ConocoPhillips Company.

If you have any questions regarding this plan, please call Tom Samarripa at ConocoPhillips Company, 432.368.1263.

Table of Contents

Section

I. Purpose

II. Scope

III. Procedures

IV. Emergency Equipment and Maintenance

Emergency Equipment Suppliers

General Information

H2S Safety Equipment and Monitoring Systems

V. Emergency Call List

VI. Public/Media Relations

VII. Public Notification/Evacuation

VIII. Forms/Reports