

District I  
1625 N. French Dr., Hobbs, NM 88240  
Phone: (575) 393-6161 Fax: (575) 393-0720  
District II  
811 S. First St., Artesia, NM 88210  
Phone: (575) 748-1283 Fax: (575) 748-9720  
District III  
1000 Rio Brazos Road, Aztec, NM 87410  
Phone: (505) 334-6178 Fax: (505) 334-6120  
District IV  
1220 S. St. Francis Dr., Santa Fe, NM 87505  
Phone: (505) 476-3460 Fax: (505) 476-3462

State of New Mexico  
Energy, Minerals & Natural Resources Department  
OIL CONSERVATION DIVISION  
1220 South St. Francis Dr.  
Santa Fe, NM 87505

Form C-102  
Revised August 1, 2011  
Submit one copy to appropriate  
District Office  
☐ AMENDED REPORT

HOBBS OCD  
AUG 29 2014  
RECEIVED

WELL LOCATION AND ACREAGE DEDICATION PLAT

<sup>1</sup> API Number 30-025-42080	<sup>2</sup> Pool Code 50461	<sup>3</sup> Pool Name QUAIL RIDGE, B9, SOUTH
<sup>4</sup> Property Code 313633	<sup>5</sup> Property Name NORTH LEA 3 FED COM	<sup>6</sup> Well Number 1H
<sup>7</sup> OGRID No. 18917	<sup>8</sup> Operator Name READ & STEVENS, INC.	<sup>9</sup> Elevation 3678.6

<sup>10</sup> Surface Location									
UL or lot no.	Section	Township	Range	Lot Idn	Feet from the	North/South line	Feet from the	East/West line	County
1	3	20 S	34 E		200	NORTH	350	EAST	LEA

<sup>11</sup> Bottom Hole Location If Different From Surface									
UL or lot no.	Section	Township	Range	Lot Idn	Feet from the	North/South line	Feet from the	East/West line	County
P	3	20 S	34 E		330	SOUTH	350	EAST	LEA

<sup>12</sup> Dedicated Acres 16.0	<sup>13</sup> Joint or Infill	<sup>14</sup> Consolidation Code	<sup>15</sup> Order No.
---------------------------------------	-------------------------------	----------------------------------	-------------------------

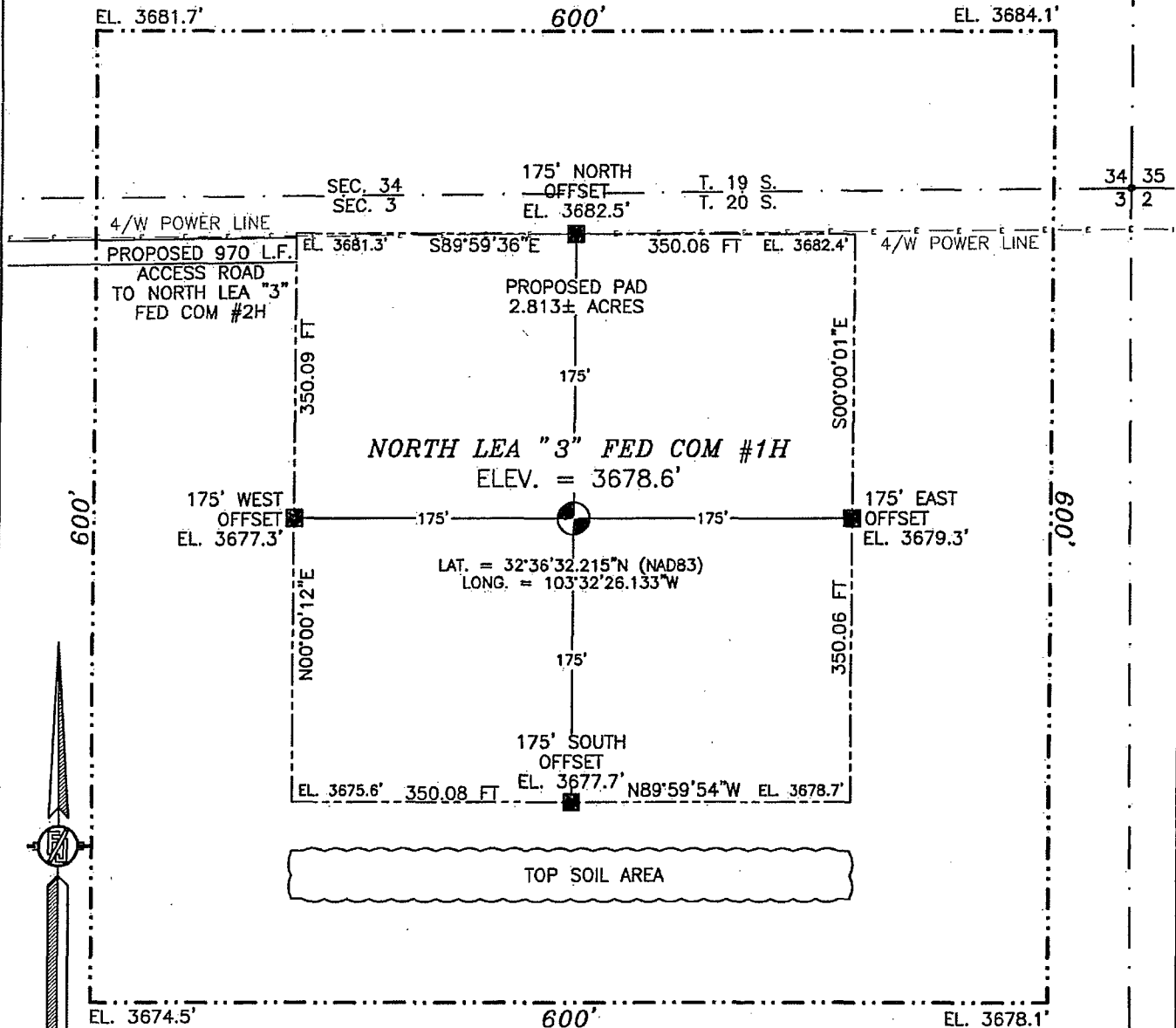
No allowable will be assigned to this completion until all interests have been consolidated or a non-standard unit has been approved by the division. Red items inserted at direction of operator email 7/14/14 WWI 7-11-14

<p>N89°29'50"E 2642.95 FT</p> <p>NW CORNER SEC. 3 LAT. = 32°36'34.097"N LONG. = 103°33'23.785"W</p> <p>N/4 CORNER SEC. 3 LAT. = 32°36'34.134"N LONG. = 103°32'52.893"W</p> <p>NORTH LEA "3" FED COM #1H ELEV. = 3678.6' LAT. = 32°36'32.215"N (NAD83) LONG. = 103°32'26.133"W</p> <p>W/4 CORNER SEC. 3 LAT. = 32°36'07.840"N LONG. = 103°33'23.804"W</p> <p>SW CORNER SEC. 3 LAT. = 32°35'41.520"N LONG. = 103°33'23.804"W</p> <p>S89°19'33"W 2632.55 FT</p>		<p>N89°25'36"E 2639.86 FT</p> <p>40.32 AC. (40.65 AC. BLM)</p> <p>LI</p> <p>SURFACE LOCATION</p> <p>NE CORNER SEC. 3 LAT. = 32°36'34.202"N LONG. = 103°32'22.038"W</p> <p>E/4 CORNER SEC. 3 LAT. = 32°36'07.865"N LONG. = 103°32'22.094"W</p> <p>SE CORNER SEC. 3 LAT. = 32°35'41.724"N LONG. = 103°32'22.156"W</p> <p>S89°22'54"W 2642.75 FT</p>		<p><sup>17</sup> OPERATOR CERTIFICATION</p> <p>I hereby certify that the information contained herein is true and complete to the best of my knowledge and belief, and that this organization either owns a working interest or undivided mineral interest in the land including the proposed bottom hole location or has a right to drill this well at this location pursuant to a contract with an owner of such a mineral or working interest, or to a voluntary pooling agreement or a compulsory pooling order heretofore entered by the division.</p> <p><i>[Signature]</i> 8/20/2014 Signature Date Rory McMillan Printed Name rmmillan@read-stevens.com E-mail Address</p> <p><sup>18</sup> SURVEYOR CERTIFICATION</p> <p>I hereby certify that the well location shown on this plat was plotted from field notes of actual surveys made by me or under my supervision, and that the same is true and correct to the best of my belief.</p> <p>AUGUST 27, 2013 Date of Survey <i>[Signature]</i> Signature and Seal of Professional Surveyor Certificate Number: 12797 SURVEY NO. 1890</p>
--	--	---	--	--

SEP 02 2014

SECTION 3, TOWNSHIP 20 SOUTH, RANGE 34 EAST, N.M.P.M.  
LEA COUNTY, STATE OF NEW MEXICO

NOTE: LATITUDE AND LONGITUDE COORDINATES ARE SHOWN USING THE  
NORTH AMERICAN DATUM OF 1983 (NAD83) IN DEGREES, MINUTES  
AND DECIMAL SECONDS FORMAT. BASIS OF BEARING IS NEW MEXICO  
STATE PLANE EAST (NAD83) COORDINATES MODIFIED TO SURFACE.



010 50 100 200

SCALE 1" = 100'

DIRECTIONS TO LOCATION

FROM MILE MARKER #79 ON HWY 62-180 GO EAST ON HWY 62-180  
APPROX. 0.7 MILES TO A LEASE ROAD ON RIGHT (SOUTH) TURN  
SOUTH ON LEASE ROAD GO APPROX. 0.7 MILES ROAD TURNS RIGHT  
(WEST) GO WEST APPROX. 0.2 MILES TO LEASE ROAD ON LEFT  
(SOUTH) TURN SOUTH GO APPROX. 0.1 MILES TO STAKED NORTH LEA  
'3' FED COM #2H AT NORTHEAST CORNER OF STAKED PAD IS A  
ROAD LATH WITH WHITE AND RED FLAGGING FOLLOW LATHS EAST  
APPROX 0.2 MILES TO THE NORTH LEA '3' FED COM #1H

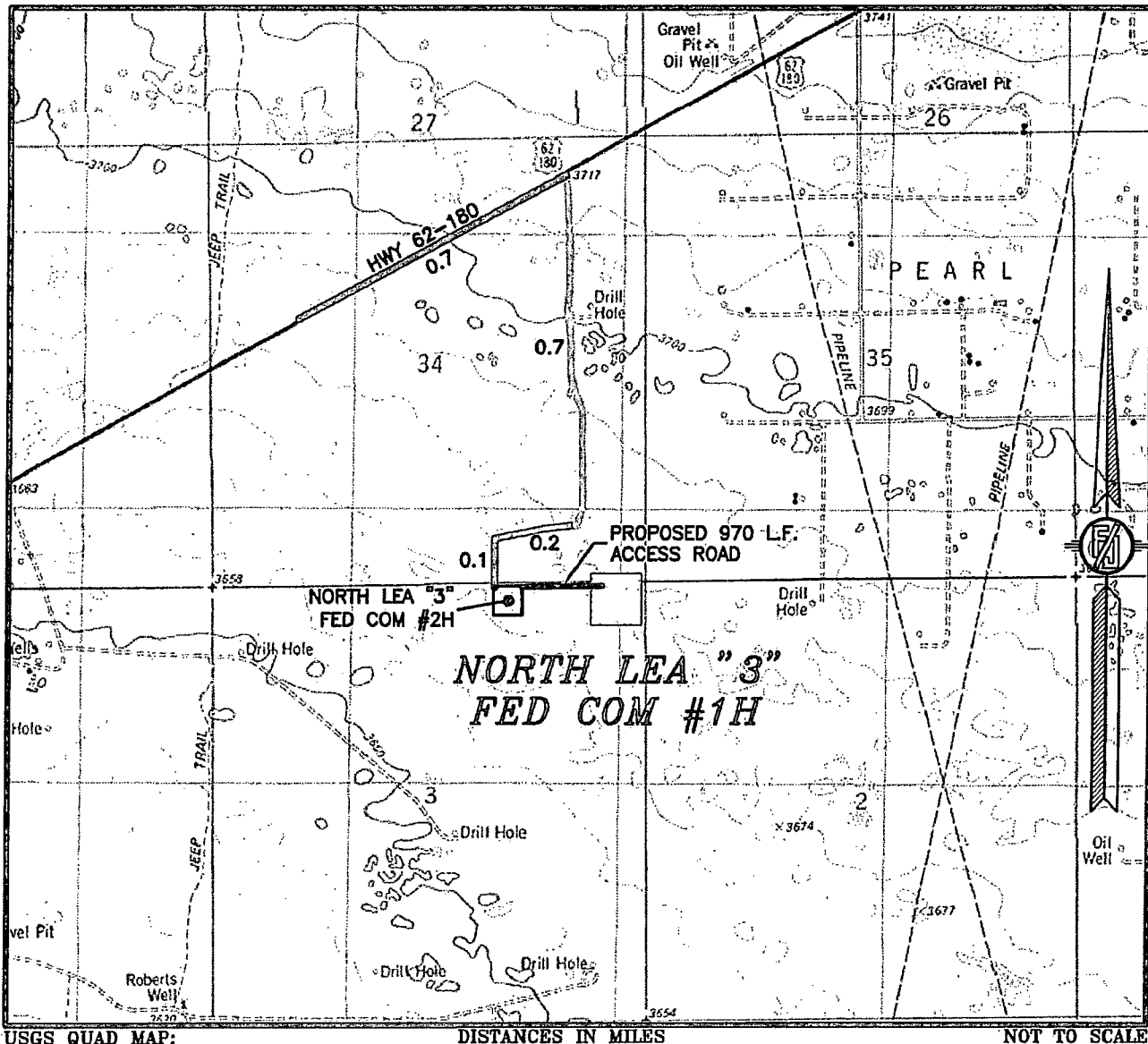
READ & STEVENS, INC.  
NORTH LEA "3" FED COM #1H  
LOCATED 200 FT. FROM THE NORTH LINE  
AND 350 FT. FROM THE EAST LINE OF  
SECTION 3, TOWNSHIP 20 SOUTH,  
RANGE 34 EAST, N.M.P.M.  
LEA COUNTY, STATE OF NEW MEXICO

AUGUST 27, 2013

SURVEY NO. 1890

MADRON SURVEYING, INC. 301 SOUTH CANAL (575) 234-3341 CARLSBAD, NEW MEXICO

SECTION 3, TOWNSHIP 20 SOUTH, RANGE 34 EAST, N.M.P.M.  
LEA COUNTY, STATE OF NEW MEXICO  
LOCATION VERIFICATION MAP



USGS QUAD MAP:  
LEA

DISTANCES IN MILES

NOT TO SCALE

**DIRECTIONS TO LOCATION**

FROM MILE MARKER #79 ON HWY 62-180 GO EAST ON HWY 62-180  
APPROX. 0.7 MILES TO A LEASE ROAD ON RIGHT (SOUTH) TURN  
SOUTH ON LEASE ROAD GO APPROX. 0.7 MILES ROAD TURNS RIGHT  
(WEST) GO WEST APPROX. 0.2 MILES TO LEASE ROAD ON LEFT  
(SOUTH) TURN SOUTH GO APPROX 0.1 MILES TO STAKED NORTH LEA  
"3" FED COM #2H AT NORTHEAST CORNER OF STAKED PAD IS A  
ROAD LATH WITH WHITE AND RED FLAGGING FOLLOW LATHS EAST  
APPROX 0.2 MILES TO THE NORTH LEA "3" FED COM #1H

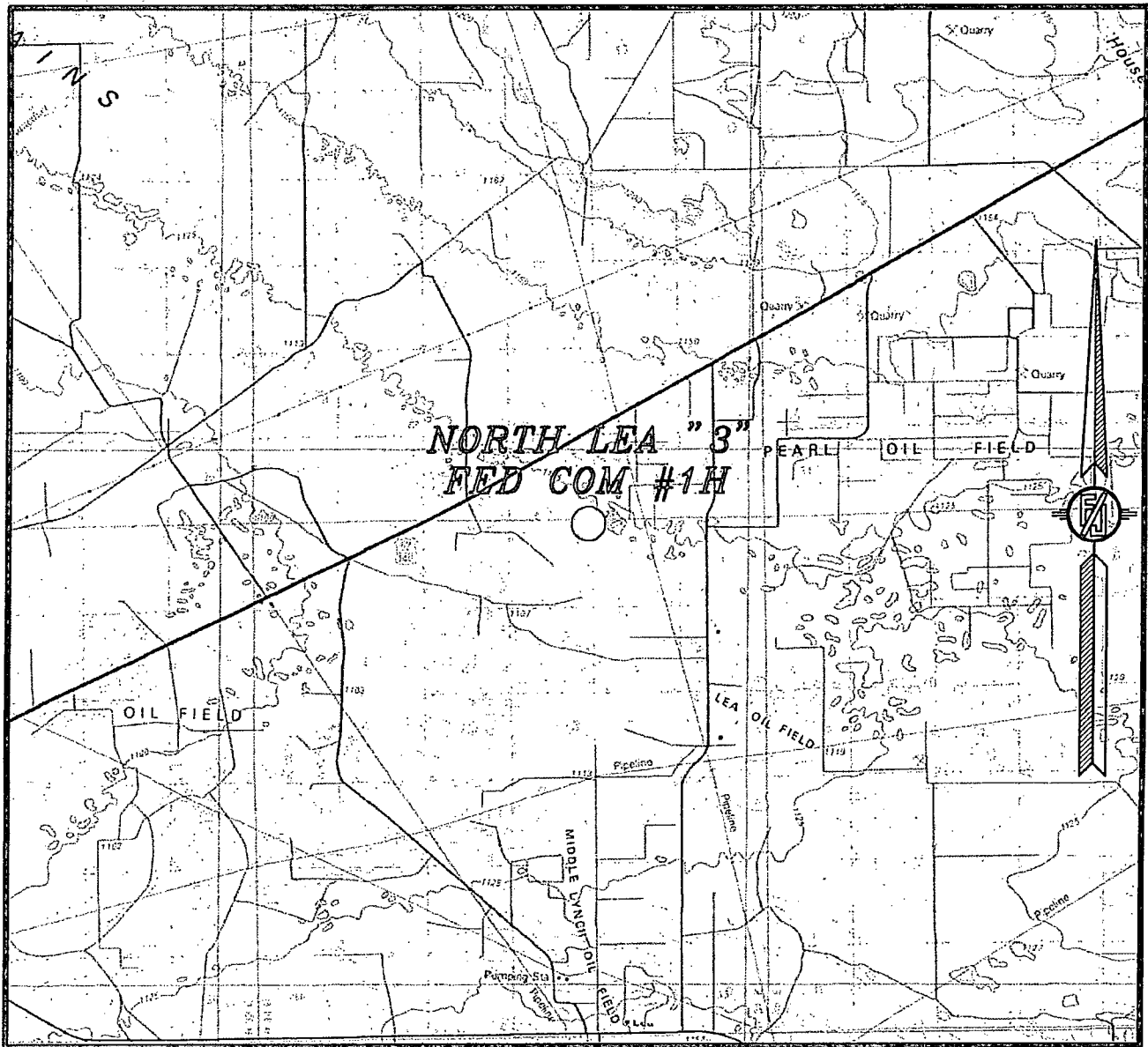
READ & STEVENS, INC.  
**NORTH LEA "3" FED COM #1H**  
LOCATED 200 FT. FROM THE NORTH LINE  
AND 350 FT. FROM THE EAST LINE OF  
SECTION 3, TOWNSHIP 20 SOUTH,  
RANGE 34 EAST, N.M.P.M.  
LEA COUNTY, STATE OF NEW MEXICO

AUGUST 27, 2013

MADRON SURVEYING, INC. 301 SOUTH CANAL  
(575) 234-3341

SURVEY NO. 1890  
CARLSBAD, NEW MEXICO

SECTION 3, TOWNSHIP 20 SOUTH, RANGE 34 EAST, N.M.P.M.  
LEA COUNTY, STATE OF NEW MEXICO  
VICINITY MAP



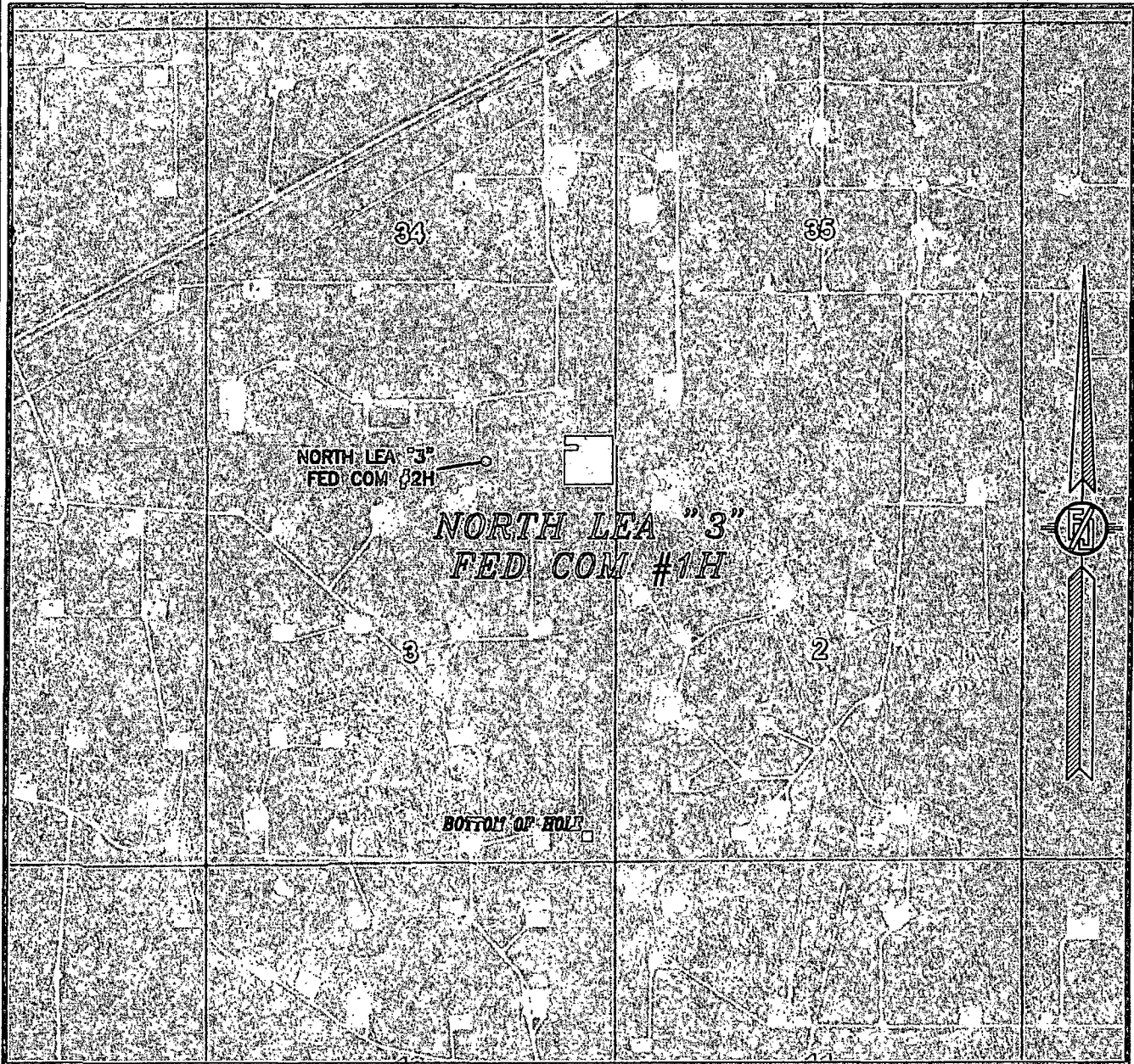
NOT TO SCALE

READ & STEVENS, INC.  
NORTH LEA "3" FED COM #1H  
LOCATED 200 FT. FROM THE NORTH LINE  
AND 350 FT. FROM THE EAST LINE OF  
SECTION 3, TOWNSHIP 20 SOUTH,  
RANGE 34 EAST, N.M.P.M.  
LEA COUNTY, STATE OF NEW MEXICO

AUGUST 27, 2013

MADRON SURVEYING, INC. 301 SOUTH CANAL (575) 234-3341 CARLSBAD, NEW MEXICO SURVEY NO. 1890

SECTION 3, TOWNSHIP 20 SOUTH, RANGE 34 EAST, N.M.P.M.  
LEA COUNTY, STATE OF NEW MEXICO  
**AERIAL PHOTO**



NOT TO SCALE  
AERIAL PHOTO:  
GOOGLE EARTH  
MARCH 2012

**READ & STEVENS, INC.**  
**NORTH LEA "3" FED COM #1H**  
LOCATED 200 FT. FROM THE NORTH LINE  
AND 350 FT. FROM THE EAST LINE OF  
SECTION 3, TOWNSHIP 20 SOUTH,  
RANGE 34 EAST, N.M.P.M.  
LEA COUNTY, STATE OF NEW MEXICO

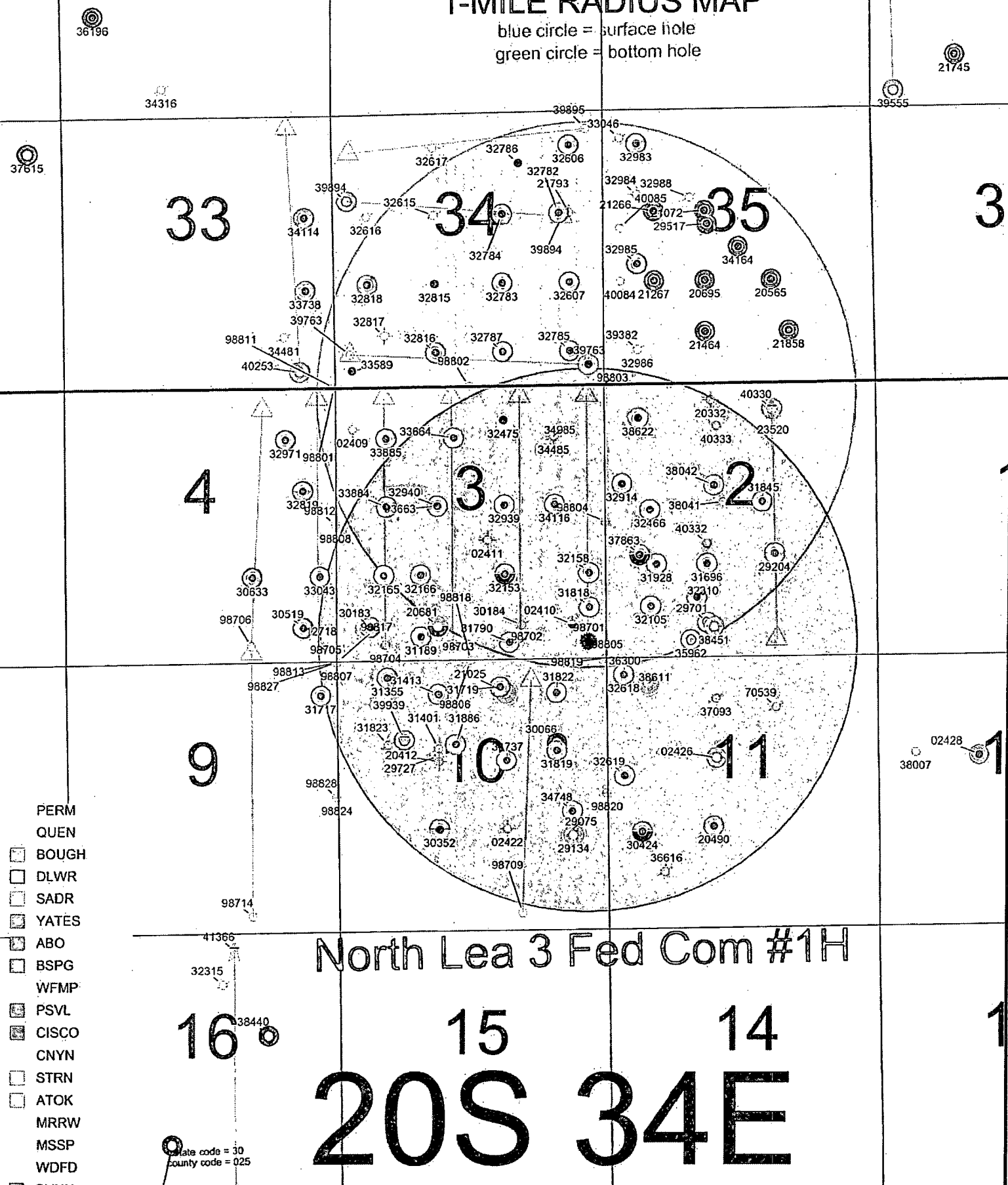
AUGUST 27, 2013

SURVEY NO. 1890

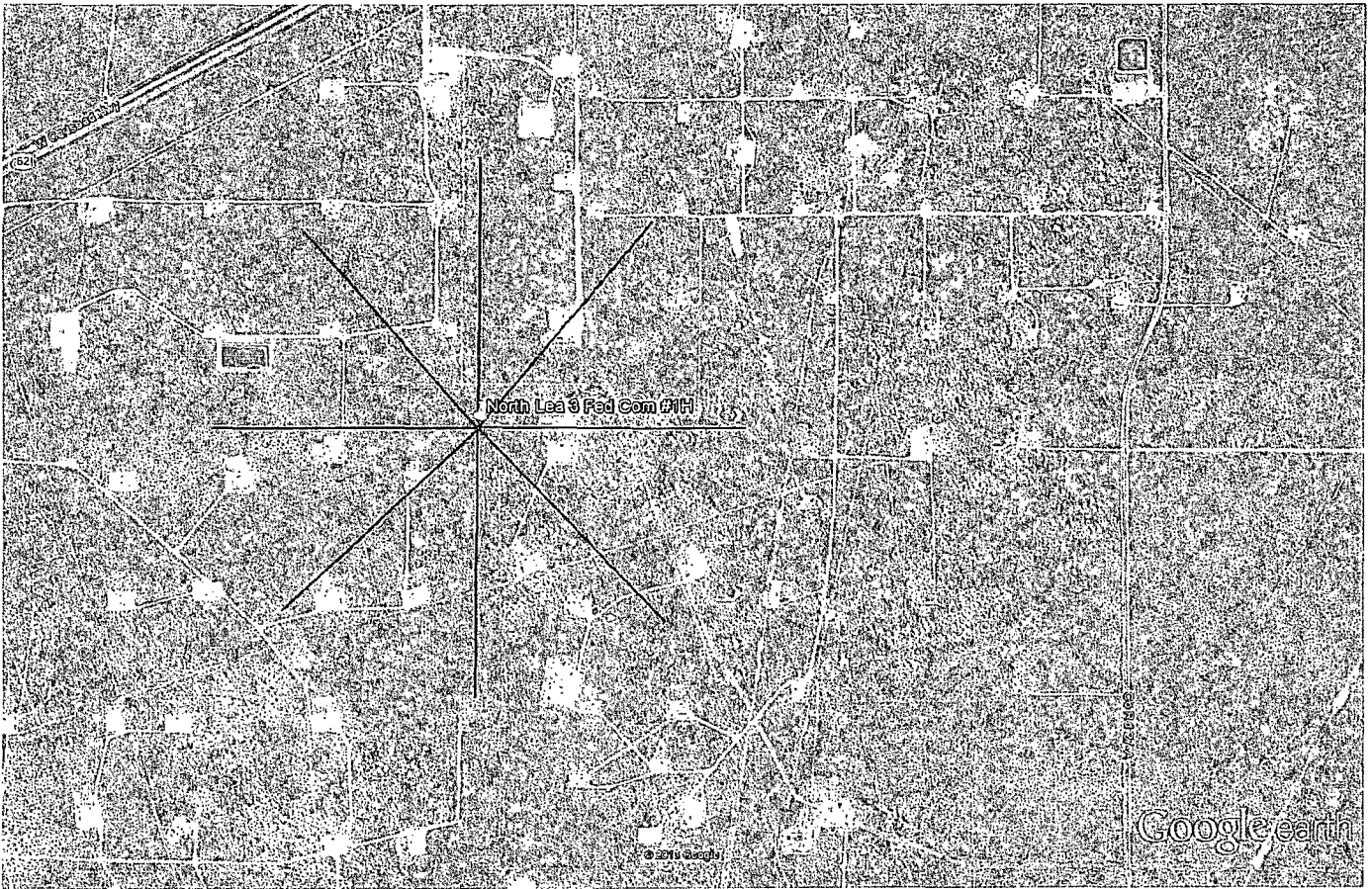
MADRON SURVEYING, INC. 301 SOUTH CANAL (575) 234-3341 CARLSBAD, NEW MEXICO

2

blue circle = surface hole  
green circle = bottom hole







Google earth

