

HOBBS OCD

District I  
1625 N. French Dr., Hobbs, NM 88240  
Phone: (575) 393-6161 Fax: (575) 393-0720  
District II  
811 S. First St., Artesia, NM 88210  
Phone: (575) 748-1283 Fax: (575) 748-0720  
District III  
1000 Rio Brazos Road, Aztec, NM 87410  
Phone: (505) 334-6178 Fax: (505) 334-6170  
District IV  
1220 S. St. Francis Dr., Santa Fe, NM 87505  
Phone: (505) 476-3460 Fax: (505) 476-3462

SEP 04 2014 State of New Mexico  
Energy, Minerals & Natural Resources  
Department  
**RECEIVED** CONSERVATION DIVISION  
1220 South St. Francis Dr.  
Santa Fe, NM 87505

FORM C-102

Revised August 1, 2011

Submit one copy to appropriate

District Office

☐ AMENDED REPORT

## WELL LOCATION AND ACREAGE DEDICATION PLAT

<sup>1</sup> API Number <b>30025-41586</b>		<sup>2</sup> Pool Code <b>45193</b>		<sup>3</sup> Pool Name <b>MESCALERO ESCARPE, BONE Spring</b>	
<sup>4</sup> Property Code <b>40309</b>		<sup>5</sup> Property Name <b>PICKARD STATE</b>			<sup>6</sup> Well Number <b>#1H</b>
<sup>7</sup> GRID No. <b>228937</b>		<sup>8</sup> Operator Name <b>MATADOR PRODUCTION COMPANY</b>			<sup>9</sup> Elevation <b>4053'</b>

<sup>10</sup> Surface Location									
UL or lot no. <b>0</b>	Section <b>20</b>	Township <b>18-S</b>	Range <b>34-E</b>	Lot Idn <b>-</b>	Feet from the <b>699'</b>	North/South line <b>SOUTH</b>	Feet from the <b>1806'</b>	East/West line <b>EAST</b>	County <b>LEA</b>

UL or lot no. <b>B</b>	Section <b>20</b>	Township <b>18-S</b>	Range <b>34-E</b>	Lot Idn <b>-</b>	Feet from the <b>231' 230</b>	North/South line <b>NORTH</b>	Feet from the <b>2247' 2288</b>	East/West line <b>EAST</b>	County <b>LEA</b>
---------------------------	----------------------	-------------------------	----------------------	---------------------	----------------------------------	----------------------------------	------------------------------------	-------------------------------	----------------------

<sup>12</sup> Dedicated Acres <b>320.00</b>	<sup>13</sup> Joint or Infill	<sup>14</sup> Consolidation Code	<sup>15</sup> Order No.
--	-------------------------------	----------------------------------	-------------------------

No allowable will be assigned to this completion until all interests have been consolidated or a non-standard unit has been approved by the division.

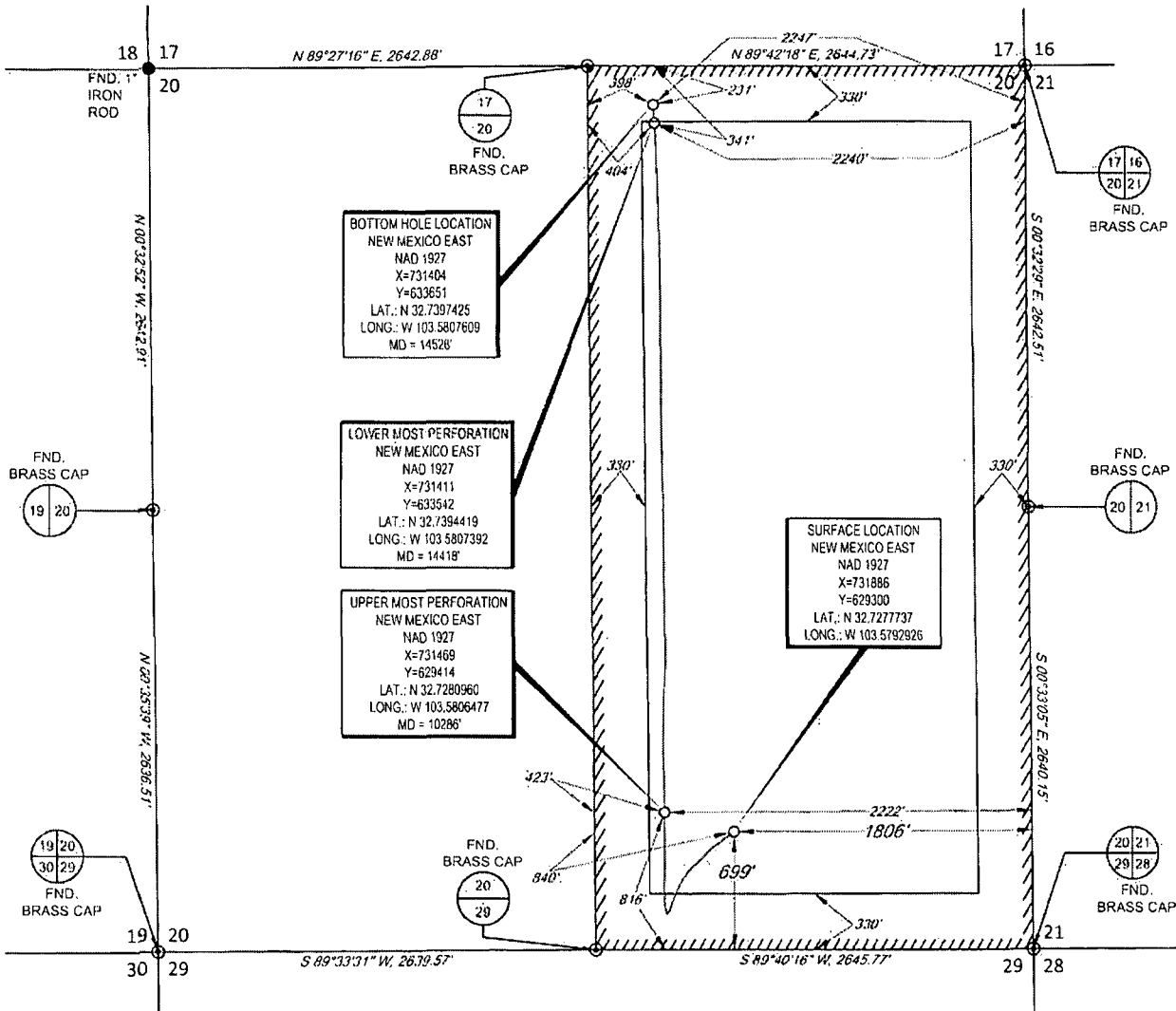
	<p><b>17 OPERATOR CERTIFICATION</b></p> <p>I hereby certify that the information contained herein is true and complete to the best of my knowledge and belief, and that this organization either owns a working interest or undivided mineral interest in the land including the proposed bottom hole location or has a right to drill this well at this location pursuant to a contract with an owner of such a mineral or working interest, or to a secondary pooling agreement or a compulsory pooling order heretofore entered by the division.</p> <p><i>Clayton Sporich</i> 8/6/14 Signature Date</p> <p>Clayton Sporich Printed Name</p> <p>csporich@matadorresources.com E-mail Address</p>
	<p><b>18 SURVEYOR CERTIFICATION</b></p> <p>I hereby certify that the well location shown on this plat was plotted from field notes of actual surveys made by me or under my supervision, and that the same is true to the best of my belief.</p> <p>8/01/2014 Date of Survey</p> <p><i>Michael Brown</i> Signature of Professional Surveyor</p> <p>NEW MEXICO 18329 PROFESSIONAL SURVEYOR</p> <p>Certificate Number</p>

S:\SURVEY\MATADOR\_RESOURCES\PICKARD\_STATE\WELL\_PRODUCING\_AREA\PICKARDSTATE\_11H.DWG 8/6/2014 10:58:15 AM dwh

SEP 08 2014

SCALE: 1" = 1000'  
0' 500' 1000'

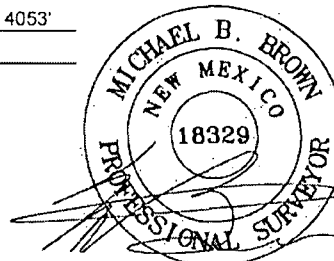
SECTION 20, TOWNSHIP 18 SOUTH, RANGE 34 EAST, N.M.P.M.  
LEA COUNTY, NEW MEXICO



LEASE NAME & WELL NO.: PICKARD STATE #1H  
SECTION 20 TWP 18-S RGE 34-E SURVEY N.M.P.M.  
COUNTY LEA STATE NM ELEVATION 4053'  
DESCRIPTION 699' FSL & 1806' FEL



**TOPOGRAPHIC**  
LOYALTY INNOVATION LEGACY  
1400 EVERMAN PARKWAY, Ste. 197 • FT. WORTH, TEXAS 76140  
TELEPHONE: (817) 744-7512 • FAX (817) 744-7548  
2903 NORTH BIG SPRING • MIDLAND, TEXAS 79705  
TELEPHONE: (432) 682-1553 OR (800) 767-1553 • FAX (432) 682-1743  
WWW.TOPOGRAPHIC.COM



Michael Blake Brown, P.S. No. 18329  
AUGUST 1, 2014

PICKARD STATE #1H AS-COMPLETED	REVISION:		NOTES:
	INT	DATE	
DATE: 08/01/14			1 ORIGINAL DOCUMENT SIZE 8 5/8" X 11" 2 ALL BEARINGS, DISTANCES, AND COORDINATE VALUES CONTAINED HEREIN ARE GRID BASED UPON THE NEW MEXICO STATE PLANE COORDINATE SYSTEM, EAST ZONE, U.S. SURVEY FEET, NORTH AMERICAN DATUM 19 27 3 THIS EASEMENT/SERVITUDE LOCATION SHOWN HEREON HAS BEEN SURVEYED ON THE GROUND UNDER MY SUPERVISION AND PREPARED ACCORDING TO THE EVIDENCE FOUND AT THE TIME OF SURVEY, AND DATA PROVIDED BY MATADOR PRODUCTION CO. THIS CERTIFICATION IS MADE AND LIMITED TO THOSE PERSONS OR ENTITIES SHOWN ON THE FACE OF THIS PLAT AND IS NON-TRANSFERABLE. THIS SURVEY IS CERTIFIED FOR THIS TRANSACTION ONLY.
FILE: AD_PICKARDSTATE_1H			
DRAWN BY: G.O.			
SHEET: 1 OF 1			