

District I
1625 N. French Dr., Hobbs, NM 88240
Phone: (575) 393-6161 Fax: (575) 393-0720
District II
811 S. First St., Artesia, NM 88210
Phone: (575) 748-1283 Fax: (575) 748-9720
District III
1000 Rio Brazos Road, Aztec, NM 87410
Phone: (505) 334-6178 Fax: (505) 334-6170
District IV
1220 S. St. Francis Dr., Santa Fe, NM 87505
Phone: (505) 476-3460 Fax: (505) 476-3462

State of New Mexico
Energy, Minerals & Natural Resources Department
OIL CONSERVATION DIVISION
1220 South St. Francis Dr.
Santa Fe, NM 87505

Form C-102
Revised August 1, 2011
Submit one copy to appropriate
District Office

☐ AMENDED REPORT

SEP 08 2014

RECEIVED

WELL LOCATION AND ACREAGE DEDICATION PLAT

¹ API Number 30025-42094	² Pool Code 17644	³ Pool Name Diamondtail Bone Spring/ Wildcat
⁴ Property Code 39203	⁵ Property Name CUERVO FEDERAL	⁶ Well Number #26H
⁷ OGRID No. 162683	⁸ Operator Name CIMAREX ENERGY CO OF COLORADO	⁹ Elevation 3740'

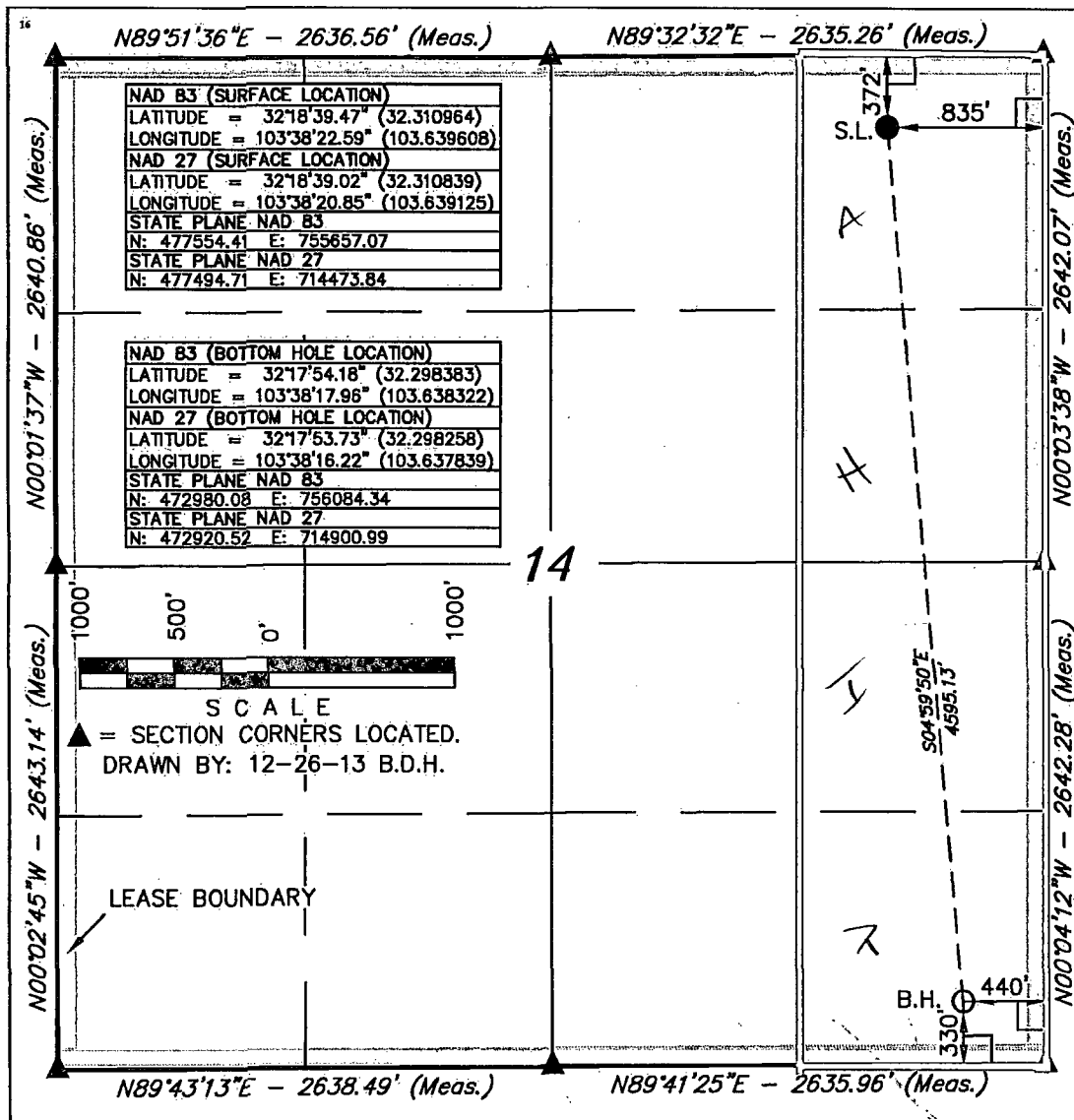
¹⁰ Surface Location

UL or lot no.	Section	Township	Range	Lot Idn	Feet from the	North/South line	Feet from the	East/West line	County
A	14	23 S	32 E		372	NORTH	835	EAST	LEA

¹¹ Bottom Hole Location If Different From Surface

UL or lot no.	Section	Township	Range	Lot Idn	Feet from the	North/South line	Feet from the	East/West line	County
P	14	23 S	32 E		330	SOUTH	440	EAST	LEA
¹² Dedicated Acres 160	¹³ Joint or Infill	¹⁴ Consolidation Code	¹⁵ Order No.						

No allowable will be assigned to this completion until all interests have been consolidated or a non-standard unit has been approved by the division.



¹⁷ OPERATOR CERTIFICATION

I hereby certify that the information contained herein is true and complete to the best of my knowledge and belief, and that this organization either owns a working interest or unleased mineral interest in the land including the proposed bottom hole location or has a right to drill this well at this location pursuant to a contract with an owner of such a mineral or working interest, or to a voluntary pooling agreement or a compulsory pooling order heretofore entered by the division.

Aricka Easterling 6-14
Signature Date

Aricka Easterling

Printed Name

aeasterling@cimarex.com

E-mail Address

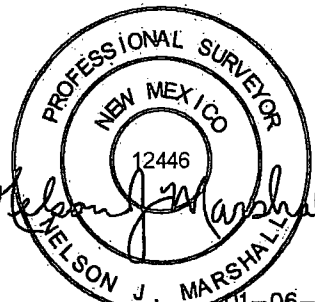
¹⁸ SURVEYOR CERTIFICATION

I hereby certify that the well location shown on this plat was plotted from field notes of actual surveys made by me or under my supervision, and that the same is true and correct to the best of my belief.

November 5, 2013

Date of Survey

Signature and Seal of Professional Surveyor:





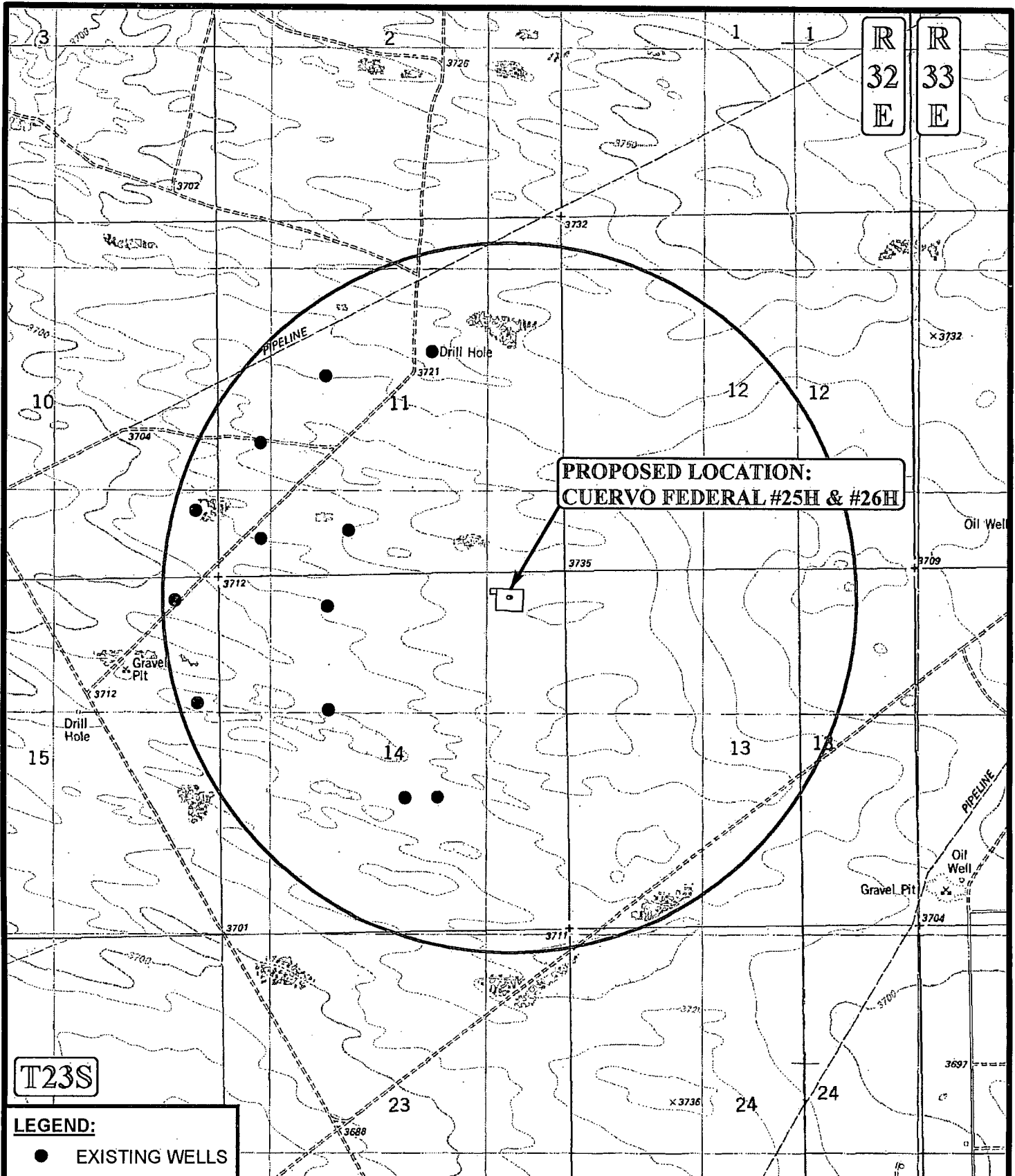
Certificate Number:

SEP 10 2014

BEGINNING AT THE INTERSECTION OF JAL HIGHWAY/ HWY 128 AND AN EXISTING ROAD TO THE NORTHEAST LOCATED IN THE SE 1/4 OF SECTION 1, T24S, R31E, N.M.P.M. PROCEED IN A NORTHEASTERLY DIRECTION APPROXIMATELY 5.6 MILES TO THE JUNCTION OF THIS ROAD AND AN EXISTING ROAD TO THE NORTHWEST; TURN LEFT AND PROCEED IN A NORTHWESTERLY DIRECTION APPROXIMATELY 1.4 MILES TO THE JUNCTION OF THIS ROAD AND AN EXISTING ROAD TO THE NORTHEAST; TURN RIGHT AND PROCEED IN A NORTHEASTERLY DIRECTION APPROXIMATELY 0.8 MILES TO THE JUNCTION OF THIS ROAD AND AN EXISTING ROAD TO THE SOUTHEAST; TURN RIGHT AND PROCEED IN A SOUTHEASTERLY, THEN SOUTHERLY DIRECTION APPROXIMATELY 0.3 MILES TO THE JUCTION OF THIS ROAD AND AN EXISTING TO THE EAST; TURN LEFT AND PROCEED IN AN EASTERLY DIRECTION APPROXIMATELY 0.5 MILES TO THE BEGINNING OF THE PROPOSED ACCESS ROAD TO THE SOUTH; FOLLOW ROAD FLAGS IN A SOUTHERLY DIRECTION APPROXIMATELY 49' TO THE PROPOSED LOCATION.

TOTAL DISTANCE FROM THE INTERSECTION OF JAL HIGHWAY/ HWY 128 AND AN EXISTING ROAD TO THE NORTHEAST LOCATED IN THE SE 1/4 OF SECTION 1, T24S, R31E, N.M.P.M. HIGHWAY/ HWY 128 TO THE PROPOSED LOCATION IS APPROXIMATELY 8.6 MILES.

DRAWN BY: J.M.C.	REVISED: 00-00-00		CIMAREX ENERGY CO.
DATE DRAWN: 12/10/2013			
		CUERVO FEDERAL #25H & #26H SECTION 14, T23S, R32E, N.M.P.M. NE 1/4 NE 1/4	
Corporate Office * 85 South 200 East Vernal, UT 84078 * (435) 789-1017		ROAD DESCRIPTION	EXHIBIT J



SCALE: 1" = 2000'

REVISED: 00-00-00

DRAWN BY: J.M.C.

DATE DRAWN: 12/10/2013



CIMAREX ENERGY CO.

**CUERVO FEDERAL #25H & #26H
SECTION 14, T23S, R32E, N.M.P.M.
NE 1/4 NE 1/4**

ONE MILE RADIUS PLAT

EXHIBIT A



Corporate Office * 85 South 200 East
Vernal, UT 84078 * (435) 789-1017

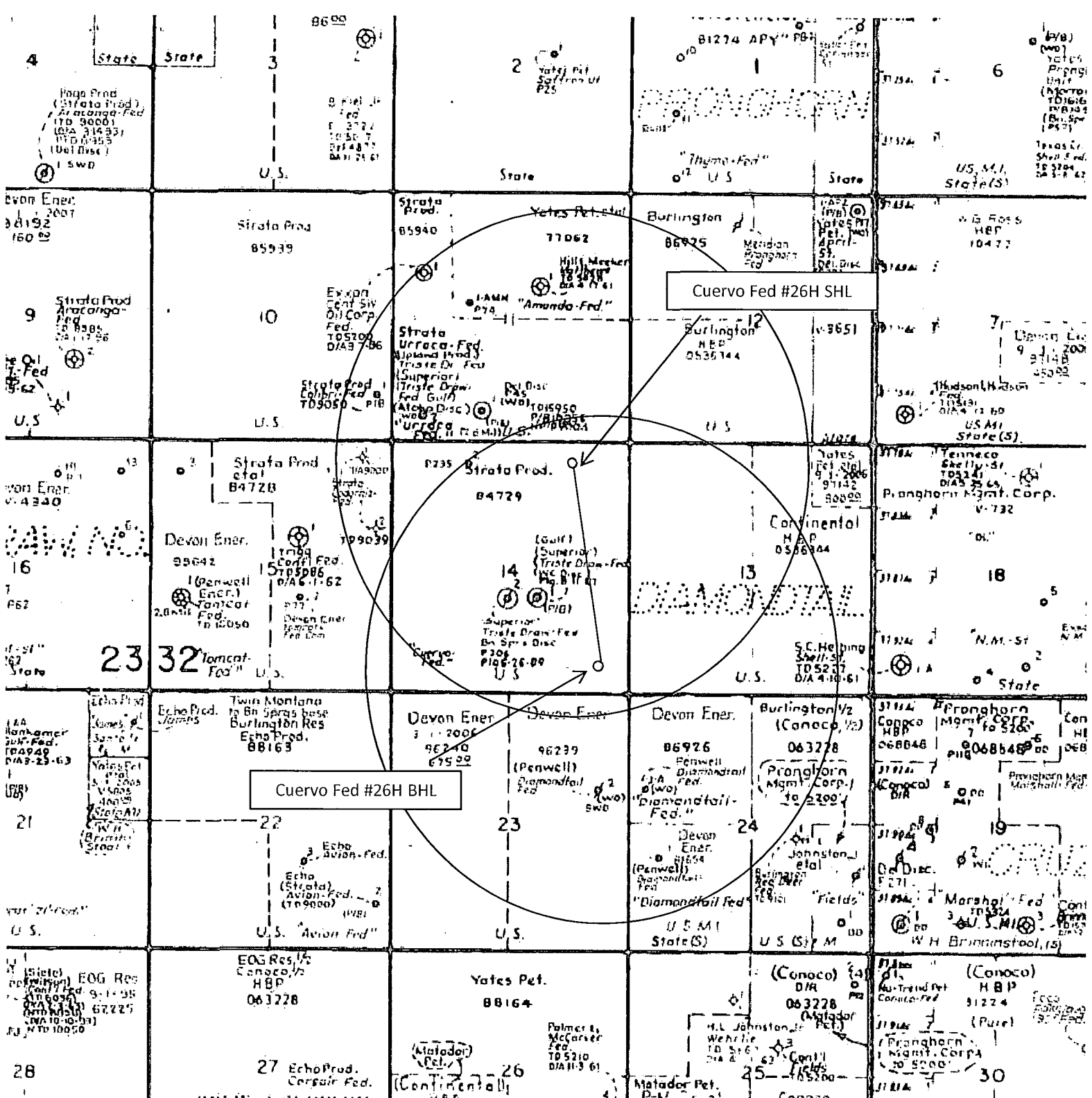
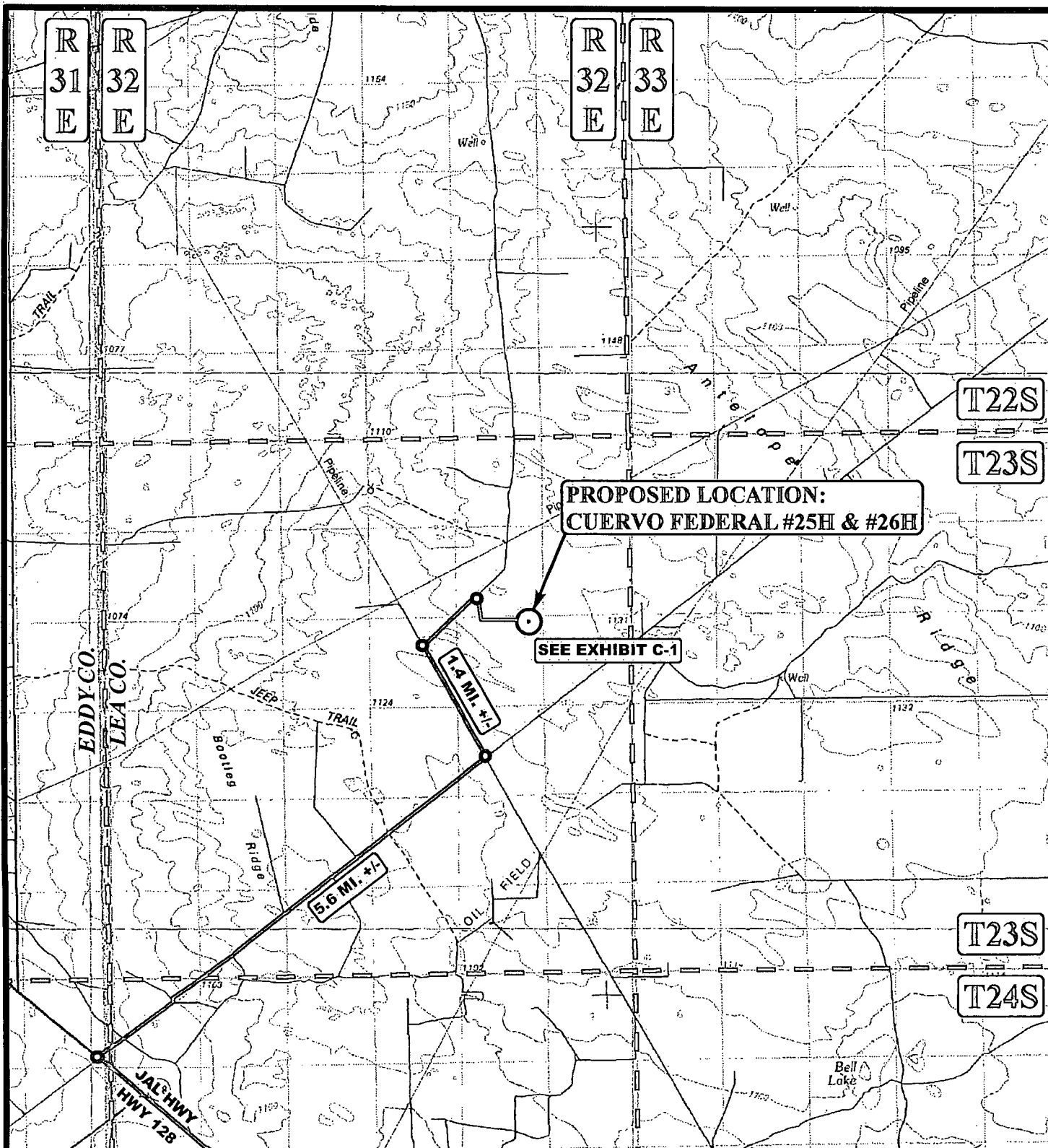


Exhibit A – One-Mile Radius Map
 Cuervo Federal 26H
 Cimarex Energy Co. of Colorado
 14-23S-32E
 SHL 372 FNL & 835 FEL
 BHL 330 FSL & 440 FEL
 Lea County, NM



LEGEND:



PROPOSED LOCATION

MALAGA, NEW MEXICO IS
+/- 26.0 MILES
SOUTHWESTERLY

SCALE: 1:100,000

REVISED: 00-00-00

DRAWN BY: J.M.C.

DATE DRAWN: 12/10/2013

N



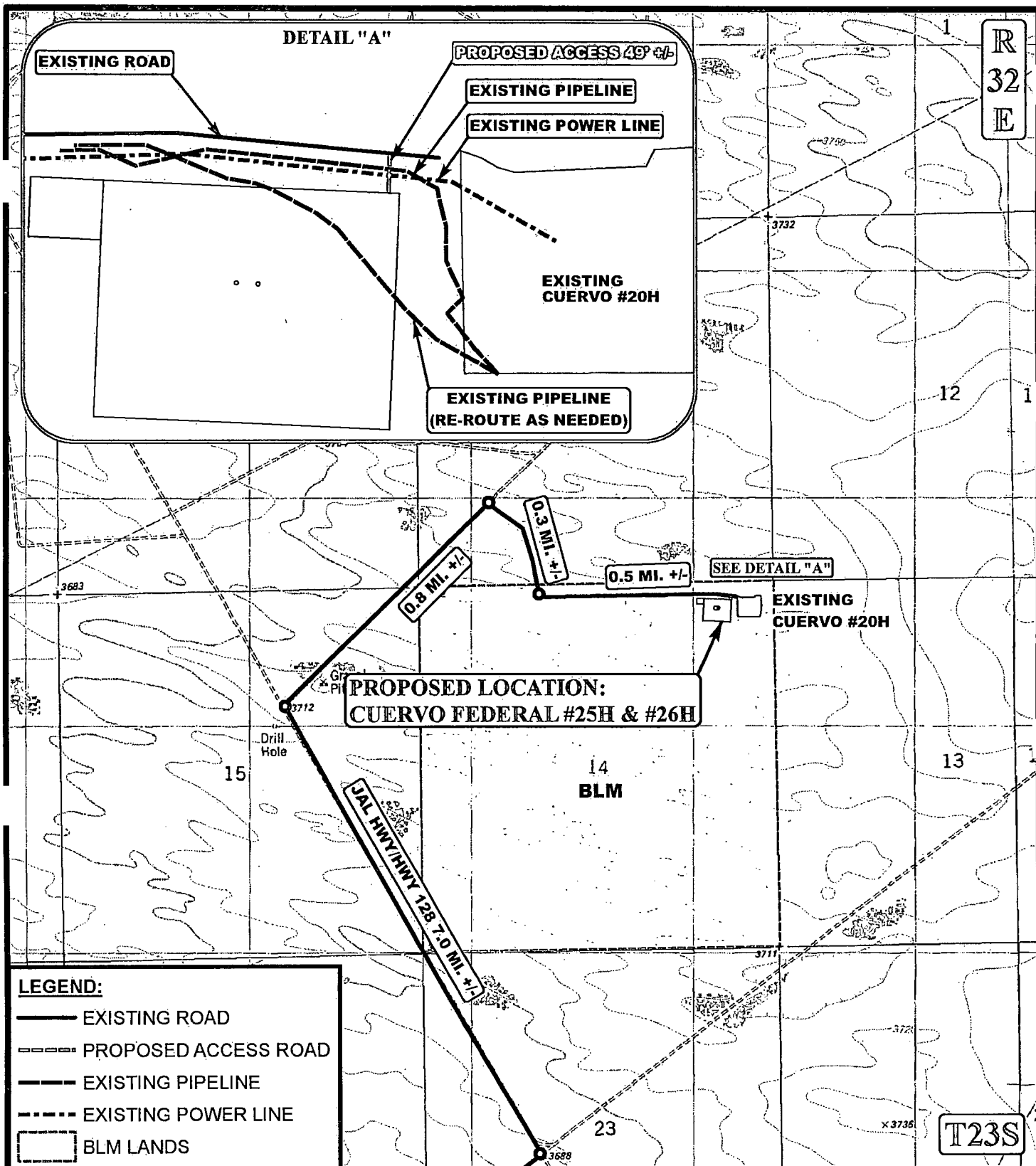
CIMAREX ENERGY CO.

CUERVO FEDERAL #25H & #26H
SECTION 14, T23S, R32E, N.M.P.M.
NE 1/4 NE 1/4

PUBLIC ACCESS ROAD MAP EXHIBIT B



Corporate Office * 85 South 200 East
Vernal, UT 84078 * (435) 789-1017



*PARCEL DATA SHOWN HAS BEEN OBTAINED FROM VARIOUS SOURCES AND SHOULD BE USED FOR MAPPING, GRAPHIC AND PLANNING PURPOSES ONLY. NO WARRANTY IS MADE BY UINAH ENGINEERING & LAND SURVEYING (UELS) FOR ACCURACY OF THE PARCEL DATA.

SCALE: 1" = 2000'

REVISED: 00-00-00

DRAWN BY: J.M.C.

DATE DRAWN: 12/10/2013



CIMAREX ENERGY CO.

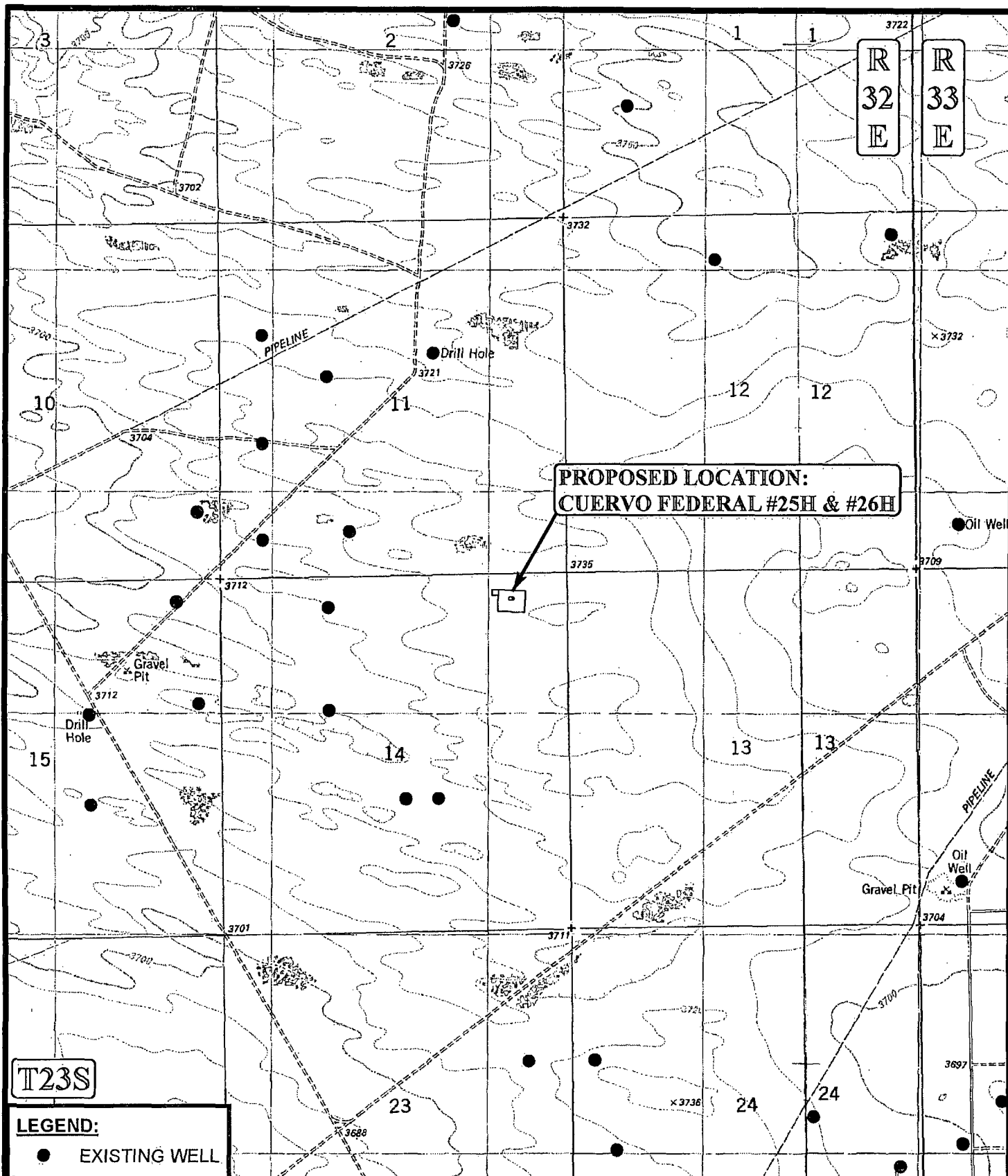
CUERVO FEDERAL #25H & #26H
SECTION 14, T23S, R32E, N.M.P.M.
NE 1/4 NE 1/4

ACCESS ROAD MAP

EXHIBIT C-1



Corporate Office * 85 South 200 East
Vernal, UT 84078 * (435) 789-1017



SCALE: 1" = 2000'

REVISED: 00-00-00

DRAWN BY: J.M.C.

DATE DRAWN: 12/10/2013



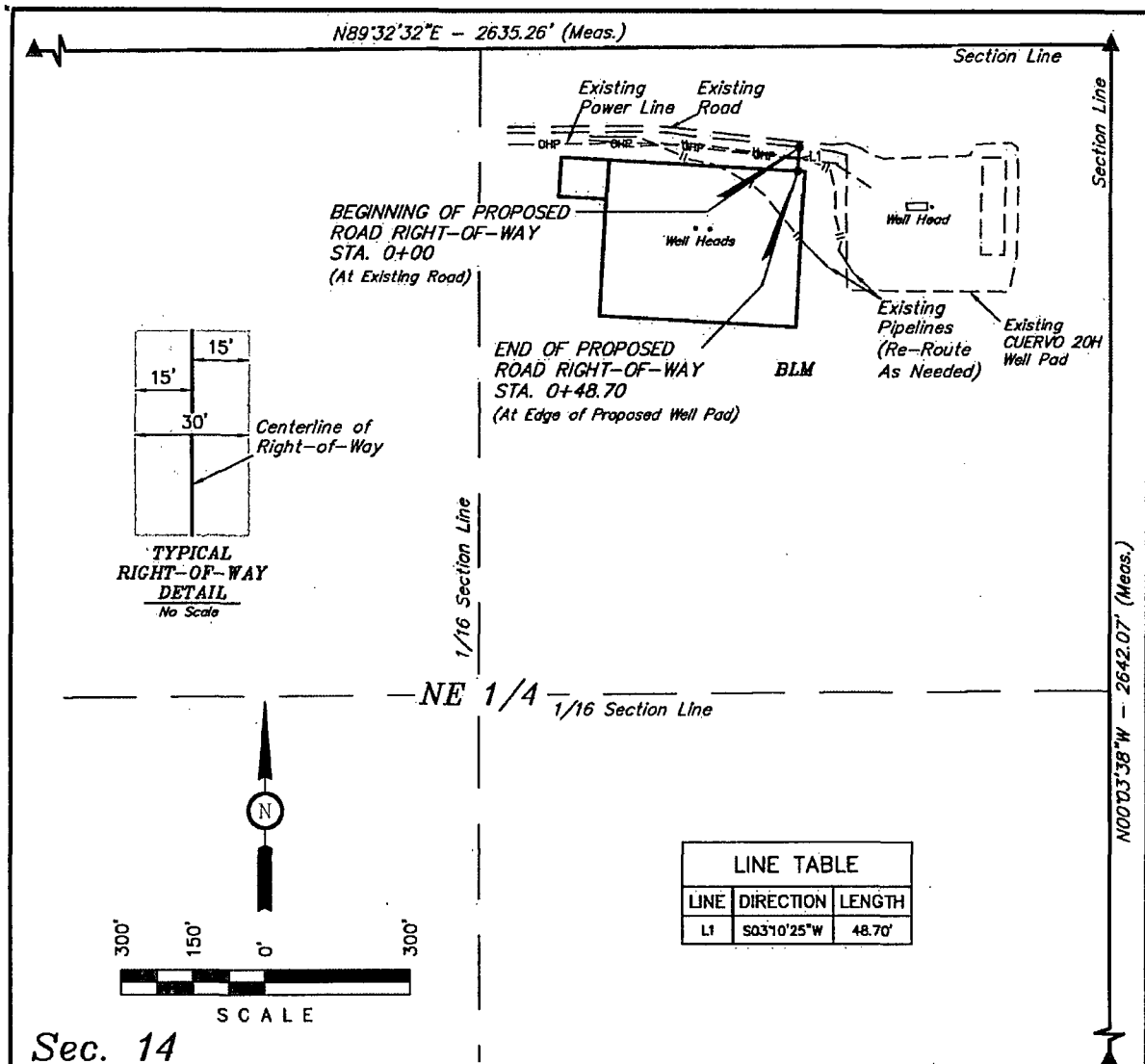
Corporate Office * 85 South 200 East
Vernal, UT 84078 * (435) 789-1017



CIMAREX ENERGY CO.

**CUERVO FEDERAL #25H & #26H
SECTION 14, T23S, R32E, N.M.P.M.
NE 1/4 NE 1/4**

USGS TOPOGRAPHIC MAP EXHIBIT C



A 30' WIDE RIGHT-OF-WAY 15' ON EACH SIDE OF THE FOLLOWING DESCRIBED CENTERLINE.

BEGINNING AT A POINT IN THE NE 1/4 NE 1/4 OF SECTION 14, T23S, R32E, N.M.P.M., WHICH BEARS S72°03'18"W 683.17' FROM THE NORTHEAST CORNER OF SAID SECTION 14, THENCE S03°10'25"W 48.70' TO A POINT IN THE NE 1/4 NE 1/4 OF SAID SECTION 14, WHICH BEARS S68°20'45"W 702.19' FROM THE NORTHEAST CORNER OF SAID SECTION 14. THE SIDE LINES OF SAID DESCRIBED RIGHT-OF-WAY BEING SHORTENED OR ELONGATED TO MEET THE GRANTOR'S PROPERTY LINES. BASIS OF BEARINGS IS A G.P.S. OBSERVATION. CONTAINS 0.034 ACRES MORE OR LESS.

BEGINNING OF ROAD STA. 0+00 BEARS S72°03'18"W 683.17' FROM THE NORTHEAST CORNER OF SECTION 14, T23S, R32E, N.M.P.M.

END OF ROAD STA. 0+48.70 BEARS S68°20'45"W 702.19' FROM THE NORTHEAST CORNER OF SECTION 14, T23S, R32E, N.M.P.M.

RIGHT-OF-WAY LENGTHS			
DESCRIPTION	FEET	ACRES	RODS
BLM	48.70	0.034	2.95

▲ = SECTION CORNERS LOCATED.

CERTIFICATE OF PROFESSIONAL SURVEYOR

THIS IS TO CERTIFY THAT THE ABOVE PLAT WAS PREPARED FROM FIELD NOTES OF ACTUAL SURVEYS MADE BY ME OR UNDER MY SUPERVISION AND THAT THE SAME ARE TRUE AND CORRECT TO THE BEST OF MY KNOWLEDGE AND BELIEF.

12446

Helen J. Marshall

REGISTERED LAND SURVEYOR
REGISTRATION NO. 12446
STATE OF NEW MEXICO

01-06-14

NOTES:

CIMAREX

CIMAREX ENERGY CO.

CUERVO FEDERAL #25H & #26H
SECTION 14, T23S, R32E, N.M.P.M.
NE 1/4 NE 1/4

DRAWN BY: B.D.H.

SCALE: 1" = 300'

DATE: 12-26-13

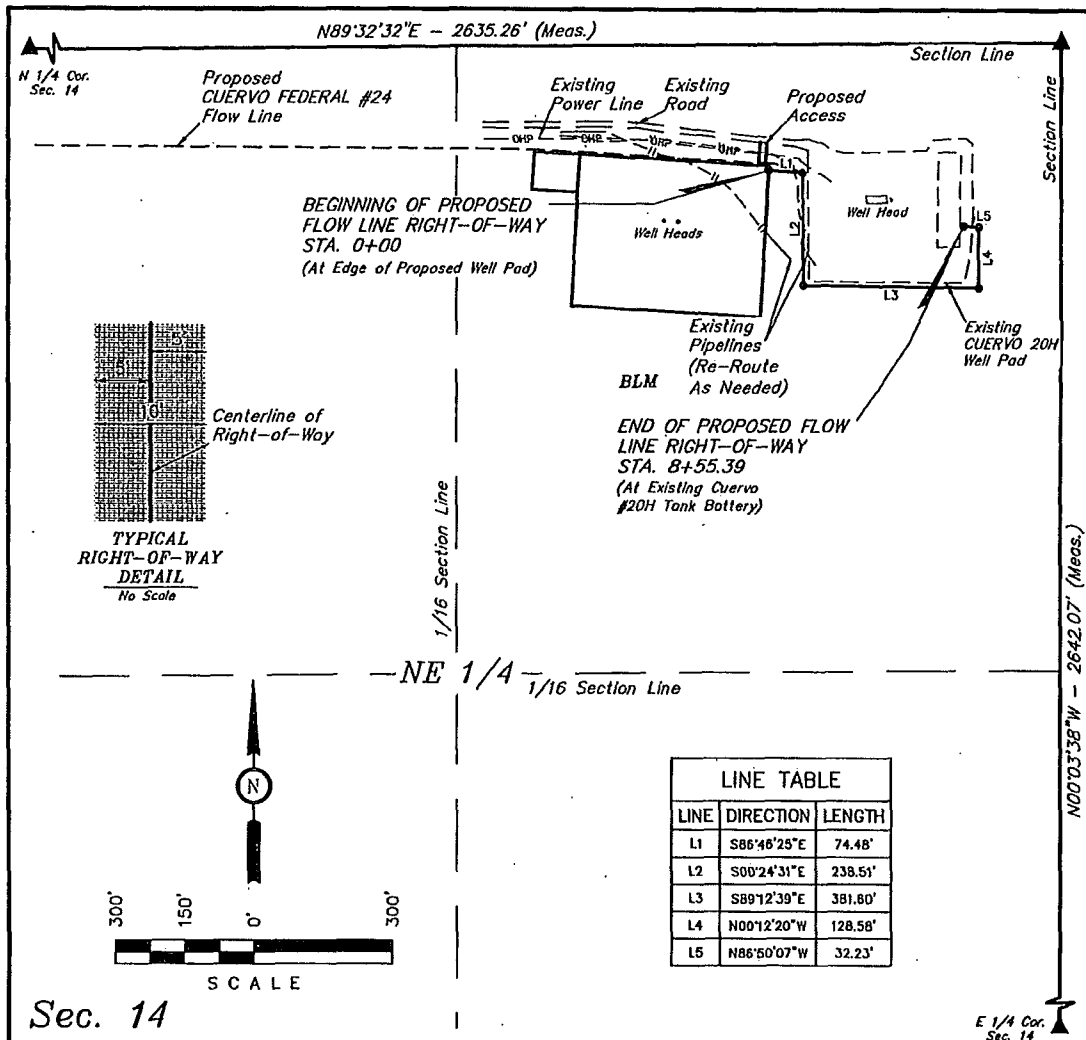
REVISED:

ACCESS ROAD R-O-W

EXHIBIT C-2



Corporate Office * 85 South 200 East
Vernal, UT 84078 * (435) 789-1017



Sec. 14

FLOW LINE RIGHT-OF-WAY DESCRIPTION

A 10' WIDE RIGHT-OF-WAY 5' ON EACH SIDE OF THE FOLLOWING DESCRIBED CENTERLINE.

BEGINNING AT A POINT IN THE NE 1/4 NE 1/4 OF SECTION 14, T23S, R32E, N.M.P.M., WHICH BEARS S67°04'32"W 692.95' FROM THE NORTHEAST CORNER OF SAID SECTION 14, THENCE S86°46'25"E 74.48'; THENCE S00°24'31"E 238.51'; THENCE S89°12'39"E 381.80'; THENCE N00°12'20"W 128.58'; THENCE N86°50'07"W 32.23' TO A POINT IN THE NE 1/4 NE 1/4 OF SAID SECTION 14, WHICH BEARS S28°49'21"W 442.29' FROM THE NORTHEAST CORNER OF SAID SECTION 14. THE SIDE LINES OF SAID DESCRIBED RIGHT-OF-WAY BEING SHORTENED OR ELONGATED TO MEET THE GRANTOR'S PROPERTY LINES. BASIS OF BEARINGS IS A G.P.S. OBSERVATION. CONTAINS 0.196 ACRES MORE OR LESS.

BEGINNING OF FLOW LINE STA. 0+00 BEARS S67°04'32"W 692.95' FROM THE NORTHEAST CORNER OF SECTION 14, T23S, R32E, N.M.P.M.

END OF FLOW LINE STA. 8+55.39 BEARS S28°49'21"W 442.29' FROM THE NORTHEAST CORNER OF SECTION 14, T23S, R32E, N.M.P.M.

RIGHT-OF-WAY LENGTHS			
DESCRIPTION	FEET	ACRES	RODS
BLM	855.39	0.196	51.84

▲ = SECTION CORNERS LOCATED.

CERTIFICATE OF PROFESSIONAL SURVEYOR
THIS IS TO CERTIFY THAT THE ABOVE PLAT WAS PREPARED FROM FIELD NOTES OF ACTUAL SURVEYS MADE BY ME OR UNDER MY SUPERVISION AND THAT THE SAME ARE TRUE AND CORRECT TO THE BEST OF MY KNOWLEDGE AND BELIEF.

REGISTERED LAND SURVEYOR
REGISTRATION NO. 12446
STATE OF NEW MEXICO

NOTES:

CIMAREX

CIMAREX ENERGY CO.

CUERVO FEDERAL #25 & #26
SECTION 14, T23S, R32E, N.M.P.M.
NE 1/4 NE 1/4

DRAWN BY: B.D.H.

SCALE: 1" = 300'

DATE: 12-26-13

REVISED: 06-17-14

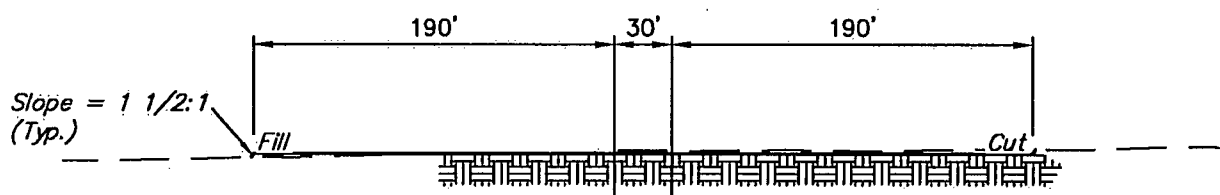
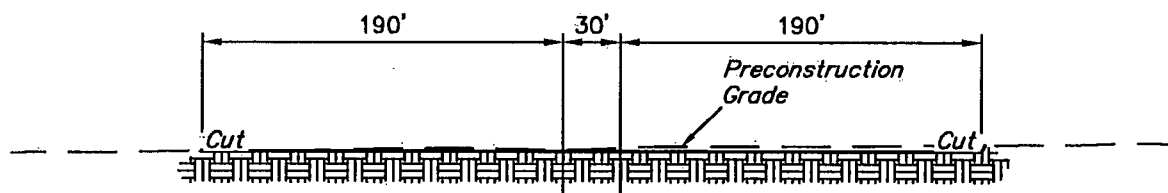
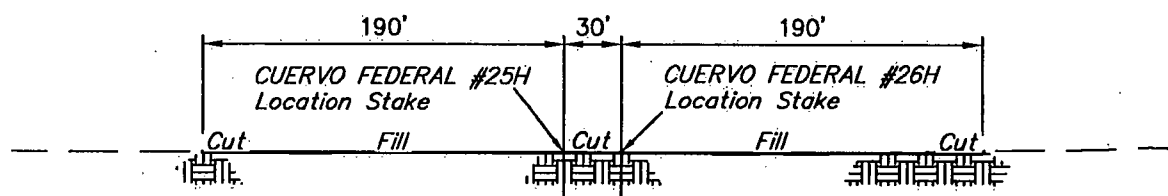
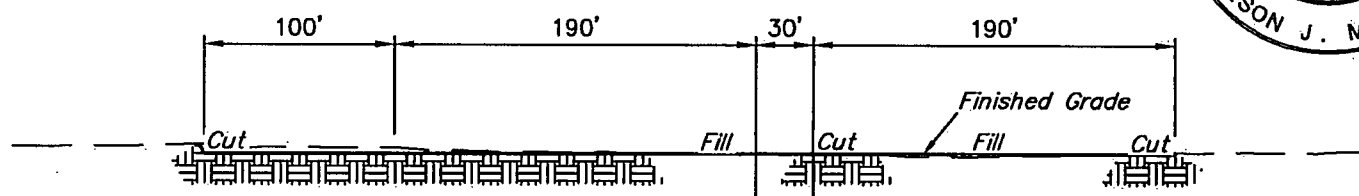
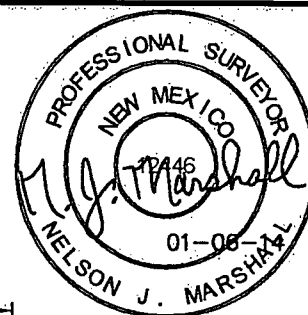


Corporate Office * 85 South 200 East
Vernal, UT 84078 * (435) 789-1017

FLOWLINE R-O-W

EXHIBIT G-1

1" = 40'
X-Section
Scale
1" = 100'



APPROXIMATE EARTHWORK QUANTITIES		APPROXIMATE SURFACE DISTURBANCE AREAS		
(3") TOPSOIL STRIPPING	1,300 Cu. Yds.		DISTANCE	ACRES
REMAINING LOCATION	1,100 Cu. Yds.	WELL SITE DISTURBANCE	NA	±3.501
TOTAL CUT	2,400 Cu. Yds.	ACCESS ROAD DISTURBANCE	±48.70'	±0.034
FILL	1,100 Cu. Yds.	PIPELINE DISTURBANCE	±74.48'	±0.017
EXCESS MATERIAL	1,300 Cu. Yds.			
TOPSOIL	1,300 Cu. Yds.			
EXCESS UNBALANCE (After Interim Rehabilitation)	0 Cu. Yds.	TOTAL DISTURBANCE	±123.18'	±3.552

- NOTES:**
- Fill quantity includes 5% for compaction.
 - Topsoil should not be stripped below finished grade on substructure area.

CIMAREX **CIMAREX ENERGY CO.**

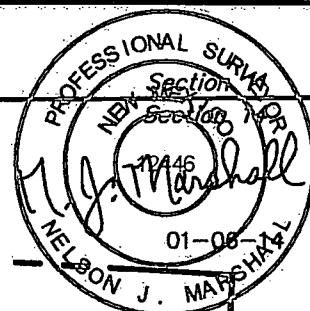
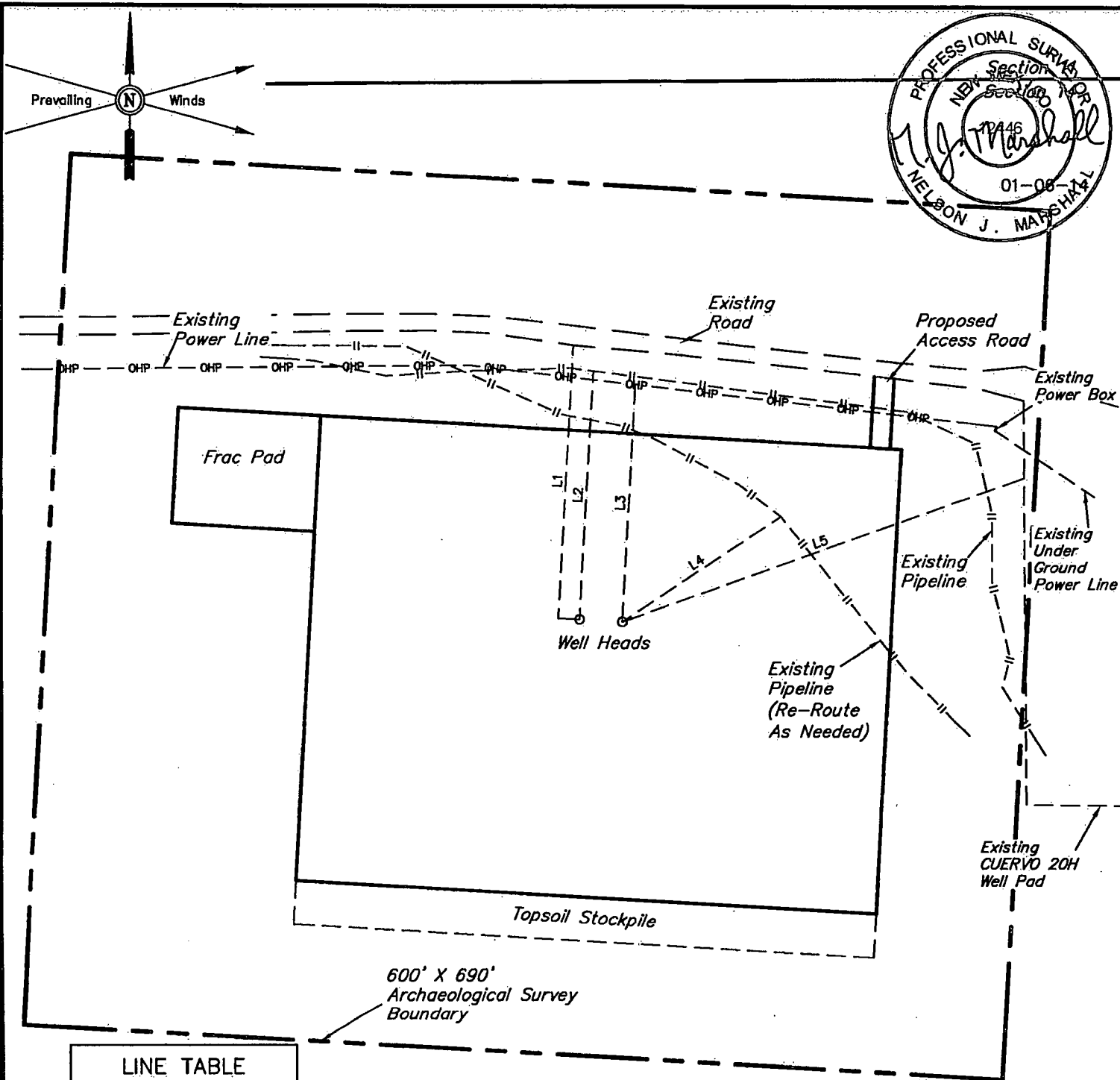
CUERVO FEDERAL #25H & #26H
SECTION 14, T23S, R32E, N.M.P.M.
NE 1/4 NE 1/4

DRAWN BY: B.D.H. SCALE: AS SHOWN
DATE: 12-26-13 REVISED:

TYPICAL CROSS SECTIONS **EXHIBIT D**



Corporate Office * 85 South 200 East
Vernal, UT 84078 * (435) 789-1017



LINE TABLE

LINE	DIRECTION	LENGTH
L1	N03°E	188'
L2	N03°E	171'
L3	N03°E	164'
L4	N57°E	133'
L5	N71°E	300'

NOTES:



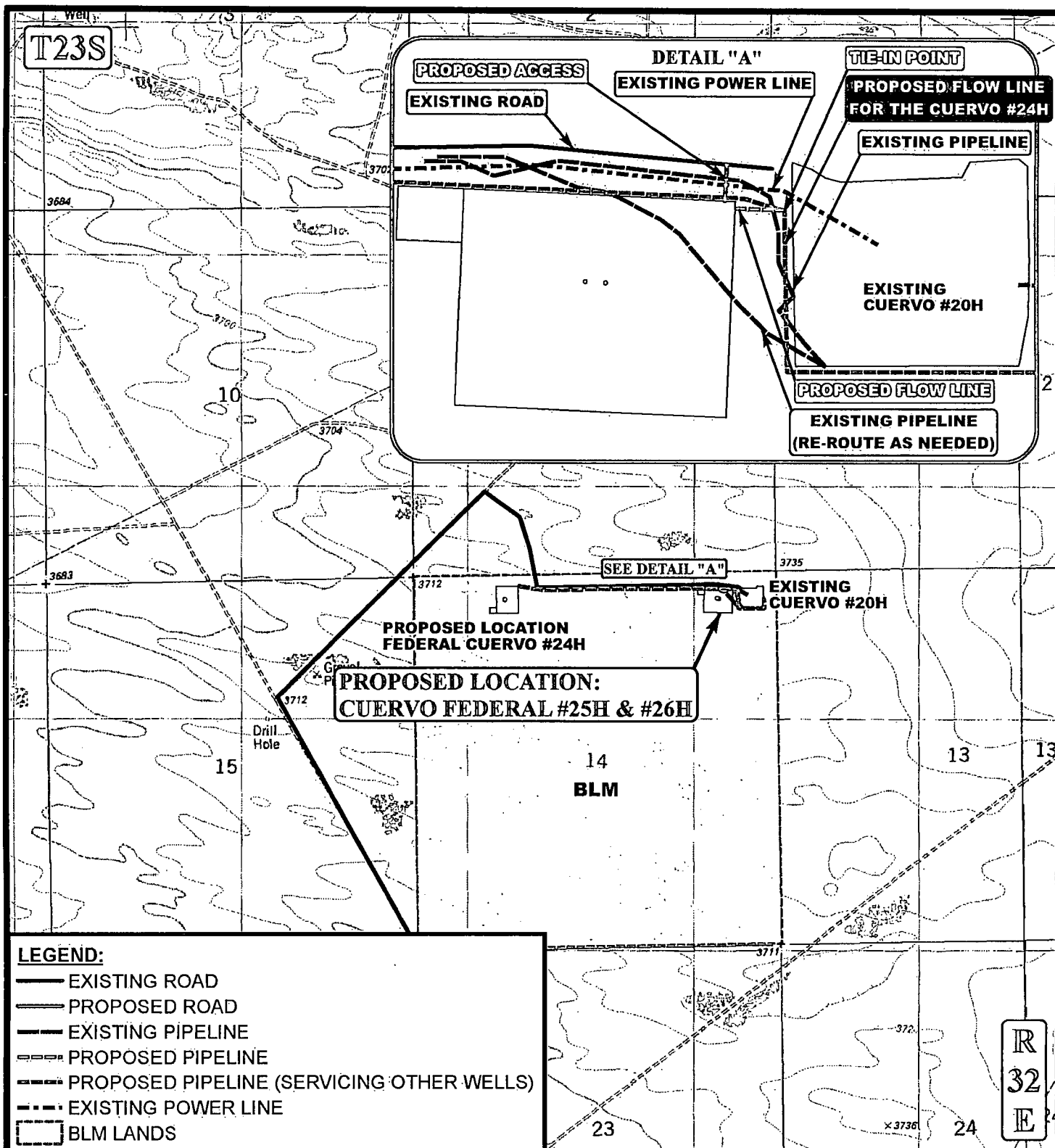
CIMAREX ENERGY CO.

CUERVO FEDERAL #25H & #26H
SECTION 14, T23S, R32E, N.M.P.M.
NE 1/4 NE 1/4

DRAWN BY: B.D.H.	SCALE: 1" = 100'	
DATE: 12-26-13	REVISED:	
ARCHAEOLOGICAL SURVEY BOUNDARY		EXHIBIT D



Corporate Office * 85 South 200 East
Vernal, UT 84078 * (435) 789-1017



APPROXIMATE TOTAL FLOW LINE DISTANCE = 74' +/-

*PARCEL DATA SHOWN HAS BEEN OBTAINED FROM VARIOUS SOURCES AND SHOULD BE USED FOR MAPPING, GRAPHIC AND PLANNING PURPOSES ONLY. NO WARRANTY IS MADE BY UINAH ENGINEERING & LAND SURVEYING (UELS) FOR ACCURACY OF THE PARCEL DATA.

SCALE: 1" = 2000'

REVISED: 00-00-00

DRAWN BY: J.M.C.

DATE DRAWN: 12/10/2013



CIMAREX ENERGY CO.

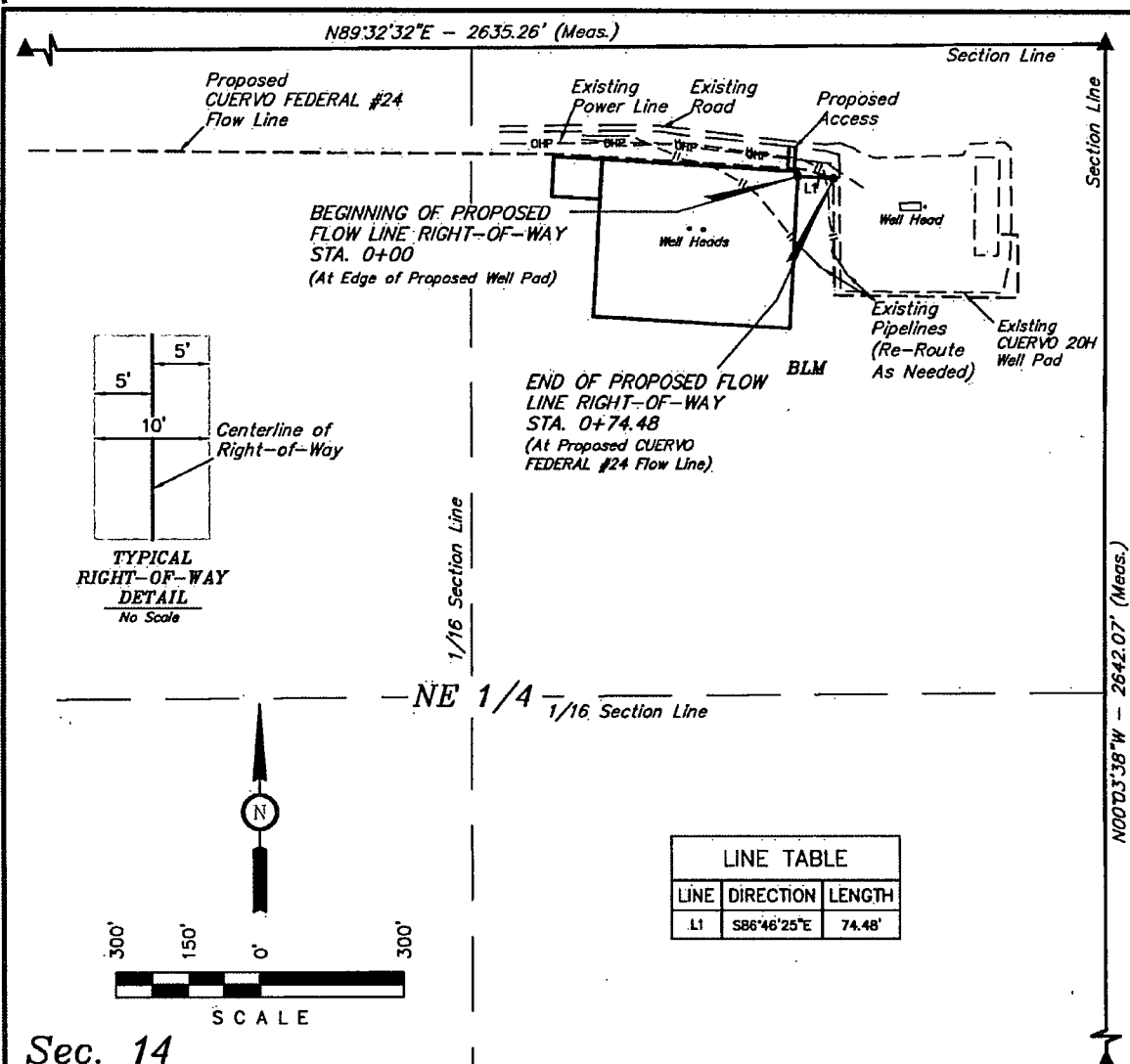
**CUERVO FEDERAL #25H & #26H
SECTION 14, T23S, R32E, N.M.P.M.
NE 1/4 NE 1/4**

FLOW LINE MAP

EXHIBIT C



Corporate Office * 85 South 200 East
Vernal, UT 84078 * (435) 789-1017



Sec. 14

FLOW LINE RIGHT-OF-WAY DESCRIPTION

A 10' WIDE RIGHT-OF-WAY 5' ON EACH SIDE OF THE FOLLOWING DESCRIBED CENTERLINE.

BEGINNING AT A POINT IN THE NE 1/4 NE 1/4 OF SECTION 14, T23S, R32E, N.M.P.M., WHICH BEARS S67°04'32"W 692.95' FROM THE NORTHEAST CORNER OF SAID SECTION 14, THENCE S86°46'25"E 74.48' TO A POINT IN THE NE 1/4 NE 1/4 OF SAID SECTION 14, WHICH BEARS S64°04'28"W 626.95' FROM THE NORTHEAST CORNER OF SAID SECTION 14. THE SIDE LINES OF SAID DESCRIBED RIGHT-OF-WAY BEING SHORTENED OR ELONGATED TO MEET THE GRANTOR'S PROPERTY LINES. BASIS OF BEARINGS IS A G.P.S. OBSERVATION. CONTAINS 0.017 ACRES MORE OR LESS.

BEGINNING OF FLOW LINE STA. 0+00 BEARS S67°04'32"W 692.95' FROM THE NORTHEAST CORNER OF SECTION 14, T23S, R32E, N.M.P.M.

END OF FLOW LINE STA. 0+74.48 BEARS S64°04'28"W 626.95' FROM THE NORTHEAST CORNER OF SECTION 14, T23S, R32E, N.M.P.M.

RIGHT-OF-WAY LENGTHS			
DESCRIPTION	FEET	ACRES	RODS
BLM	74.48	0.017	4.51

▲ = SECTION CORNERS LOCATED.

CERTIFICATE OF PROFESSIONAL SURVEYOR
THIS IS TO CERTIFY THAT THE ABOVE PLAT WAS PREPARED FROM FIELD NOTES OF ACTUAL SURVEYS MADE BY ME OR UNDER MY SUPERVISION AND THAT THE SAME ARE TRUE AND CORRECT TO THE BEST OF MY KNOWLEDGE AND BELIEF.
12446
Nelson Marshall
REGISTERED LAND SURVEYOR
REGISTRATION NO. 12446
STATE OF NEW MEXICO
01-06-14

NOTES:

CIMAREX

CIMAREX ENERGY CO.

CUERVO FEDERAL #25 & #26
SECTION 14, T23S, R32E, N.M.P.M.
NE 1/4 NE 1/4

DRAWN BY: B.D.H.

SCALE: 1" = 300'

DATE: 12-26-13

REVISED:

FLOWLINE R-O-W

EXHIBIT C-1

UINTAH
ENGINEERING & LAND SURVEYING

Corporate Office * 85 South 200 East
Vernal, UT 84078 * (435) 789-1017