

DISTRICT I
1625 N. French Dr., Hobbs, NM 88240

DISTRICT II
811 South First, Artesia, NM 88210

DISTRICT III
1000 Rio Brazos Rd., Aztec, NM 87410

DISTRICT IV
2040 South Pacheco, Santa Fe, NM 87505

State of New Mexico
Energy, Minerals and Natural Resources Department

Form C-102
Revised August 1, 2011

Submit one copy to Appropriate
District Office

OIL CONSERVATION DIVISION

1220 South St. Francis Dr.
Santa Fe, New Mexico 87505

SEP 10 2014 AMENDED REPORT

WELL LOCATION AND ACREAGE DEDICATION PLAT

API Number 30-025-26323	Pool Code 46340	Pool Name MIDWAY (STRAWN)
Property Code 309596	Property Name WARREN	Well Number 1
OGRID No. 296255	Operator Name COBALT OPERATING, LLC	Elevation 3785'

Surface Location

UL or lot No.	Section	Township	Range	Lot Idn	Feet from the	North/South line	Feet from the	East/West line	County
G	8	17-S	37-E		2088	North	1976	East	LEA

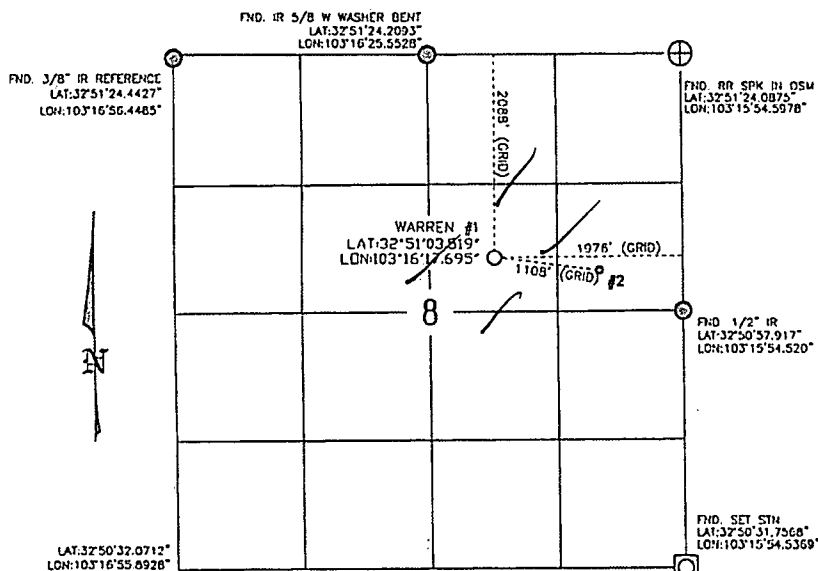
Bottom Hole Location If Different From Surface

UL or lot No.	Section	Township	Range	Lot Idn	Feet from the	North/South line	Feet from the	East/West line	County

Dedicated Acres	Joint or Infill	Consolidation Code	Order No.
40			

NO ALLOWABLE WILL BE ASSIGNED TO THIS COMPLETION UNTIL ALL INTERESTS HAVE BEEN CONSOLIDATED
OR A NON-STANDARD UNIT HAS BEEN APPROVED BY THE DIVISION

SECTION 8
T-17-S, R-37-E



- NOTES:
1. BASIS OF BEARING IS A TRANSVERSE MERCATOR PROJECTION OF THE NEW MEXICO STATE PLANE COORDINATE SYSTEM, EAST ZONE (3001), NAD 83 (GORS96)
 2. SCALE 1" = 2000'

OPERATOR CERTIFICATION

I hereby certify that the information contained herein is true and complete to the best of my knowledge and belief, and that this organization either owns a working interest or unleased mineral interest in the land including the proposed bottom hole location or has a right to drill this well at this location pursuant to a contract with an owner of such a mineral or working interest, or to a voluntary pooling agreement or compulsory pooling order heretofore entered by the division.

Signature: [Signature] Date: 6/18/14
Printed Name: James Thompson
Date: 6/18/14

SURVEYOR CERTIFICATION

I hereby certify that the well location shown on this plat was plotted from field notes of actual surveys made by me or under my supervision and that the same is true and correct to the best of my belief.

6/18/14
Date Surveyed: 6/18/14
Signature: [Signature]
Professional Engineer
NEW MEXICO
REGISTERED PROFESSIONAL ENGINEER
AND LAND SURVEYOR
NO. 3959
WILSON D. WATSON JR.
WATSON PROFESSIONAL GROUP INC

SEP 11 2014