

District I
1625 N. French Dr., Hobbs, NM 88240
Phone: (575) 393-6161 Fax: (575) 393-0720
District II
811 S. First St., Artesia, NM 88210
Phone: (575) 748-1283 Fax: (575) 748-9720
District III
1000 Rio Brazos Road, Aztec, NM 87410
Phone: (505) 334-6178 Fax: (505) 334-6170
District IV
1220 S. St. Francis Dr., Santa Fe, NM 87505
Phone: (505) 476-3460 Fax: (505) 476-3462

State of New Mexico
Energy, Minerals & Natural Resources Department
OIL CONSERVATION DIVISION
1220 South St. Francis Dr. **HOBBS OCD**
Santa Fe, NM 87505

Form C-102
Revised August 1, 2011
Submit one copy to appropriate
District Office

☐ AMENDED REPORT

SEP 12 2014

WELL LOCATION AND ACREAGE DEDICATION

1 API Number 30025- 42109	2 Well Name DIAMONDTAIL; BONE SPRING
3 Property Code 3134-60	4 Property Name URRACA FEDERAL COM
5 OGRID No. 215099	6 Operator Name CIMAREX ENERGY CO.
	7 Well Number #23H
	8 Elevation 3724'

10 Surface Location

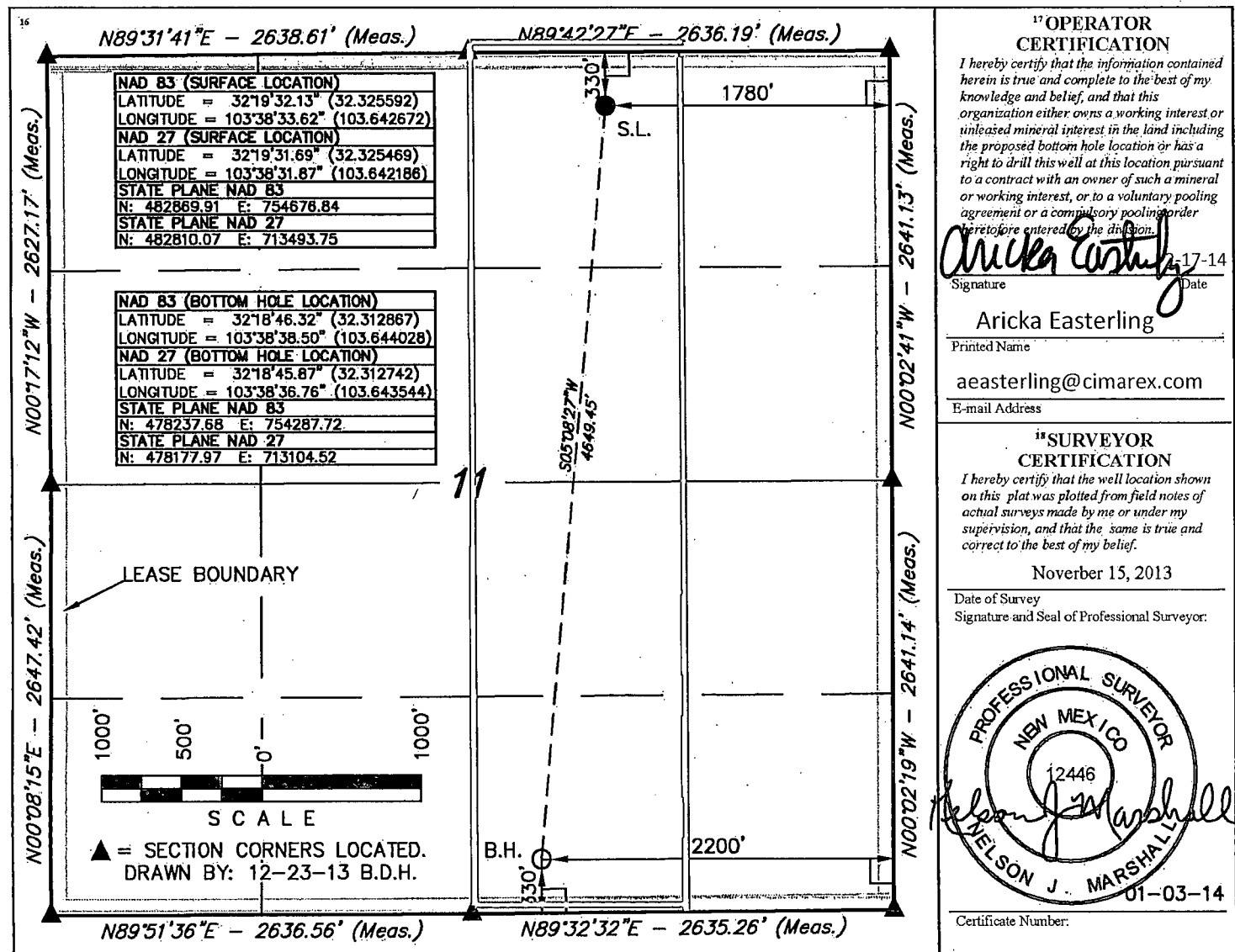
UL or lot no.	Section	Township	Range	Lot Idn	Feet from the	North/South line	Feet from the	East/West line	County
B	11	23 S	32 E		330	NORTH	1780	EAST	LEA

11 Bottom Hole Location If Different From Surface

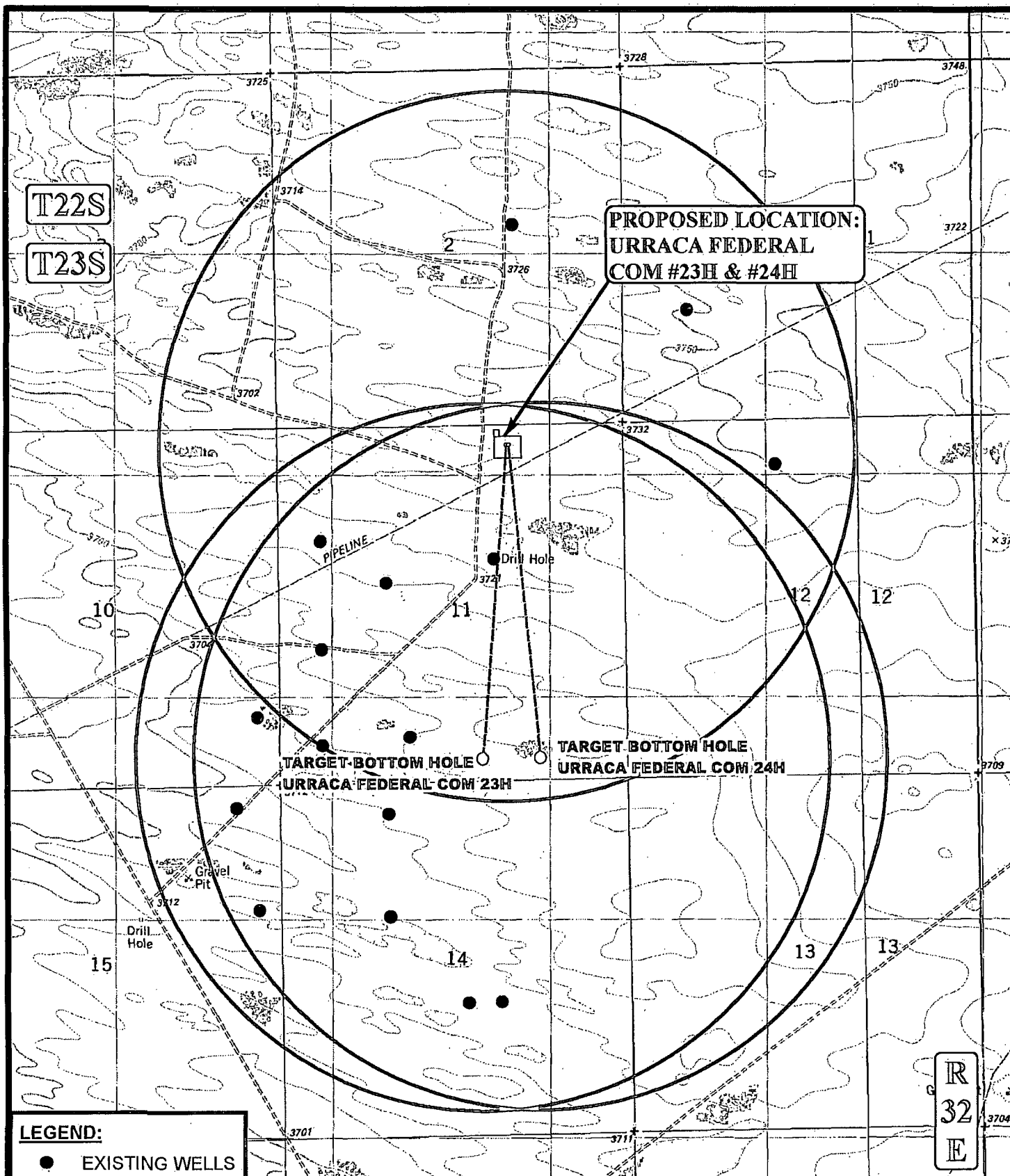
UL or lot no.	Section	Township	Range	Lot Idn	Feet from the	North/South line	Feet from the	East/West line	County
O	11	23 S	32 E		330	SOUTH	2200	EAST	LEA

12 Dedicated Acres 160	13 Joint or Infill	14 Consolidation Code	15 Order No.
---------------------------	--------------------	-----------------------	--------------

No allowable will be assigned to this completion until all interests have been consolidated or a non-standard unit has been approved by the division.



SFP 16 2014



Corporate Office * 85 South 200 East
Vernal, UT 84078 * (435) 789-1017

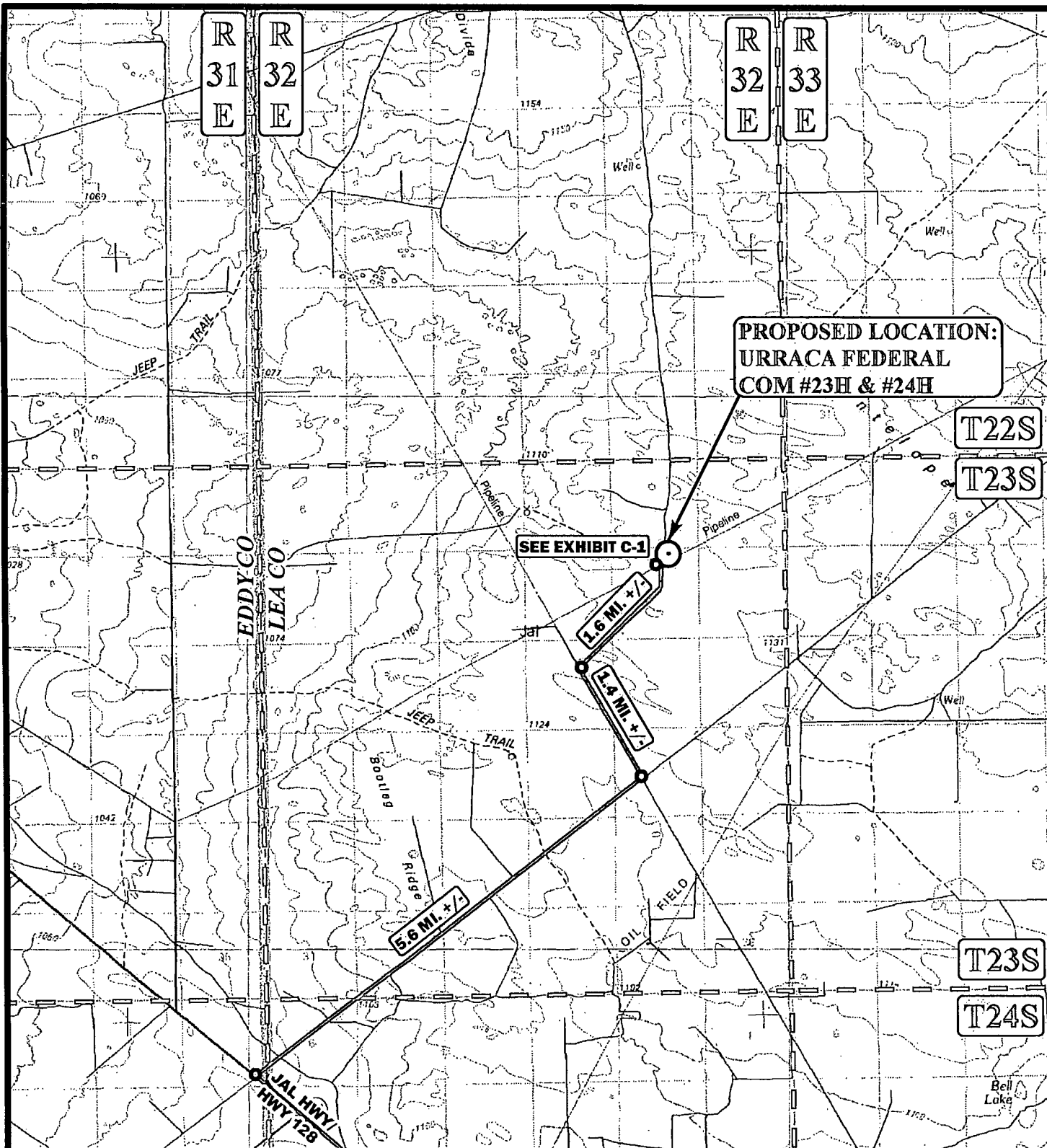


CIMAREX ENERGY CO.

URRACA FEDERAL COM #23H & #24H
SECTION 11, T23S, R32E, N.M.P.M.
NW 1/4 NE1/4

ONE MILE RADIUS PLAT

EXHIBIT A



LEGEND:



PROPOSED LOCATION

MALAGA, NEW MEXICO IS
+/- 26.1 MILES
NORTHWESTERLY

SCALE: 1:100,000

REVISED: 00-00-00

DRAWN BY: L.S.

DATE DRAWN: 12-18-13

N



CIMAREX ENERGY CO.

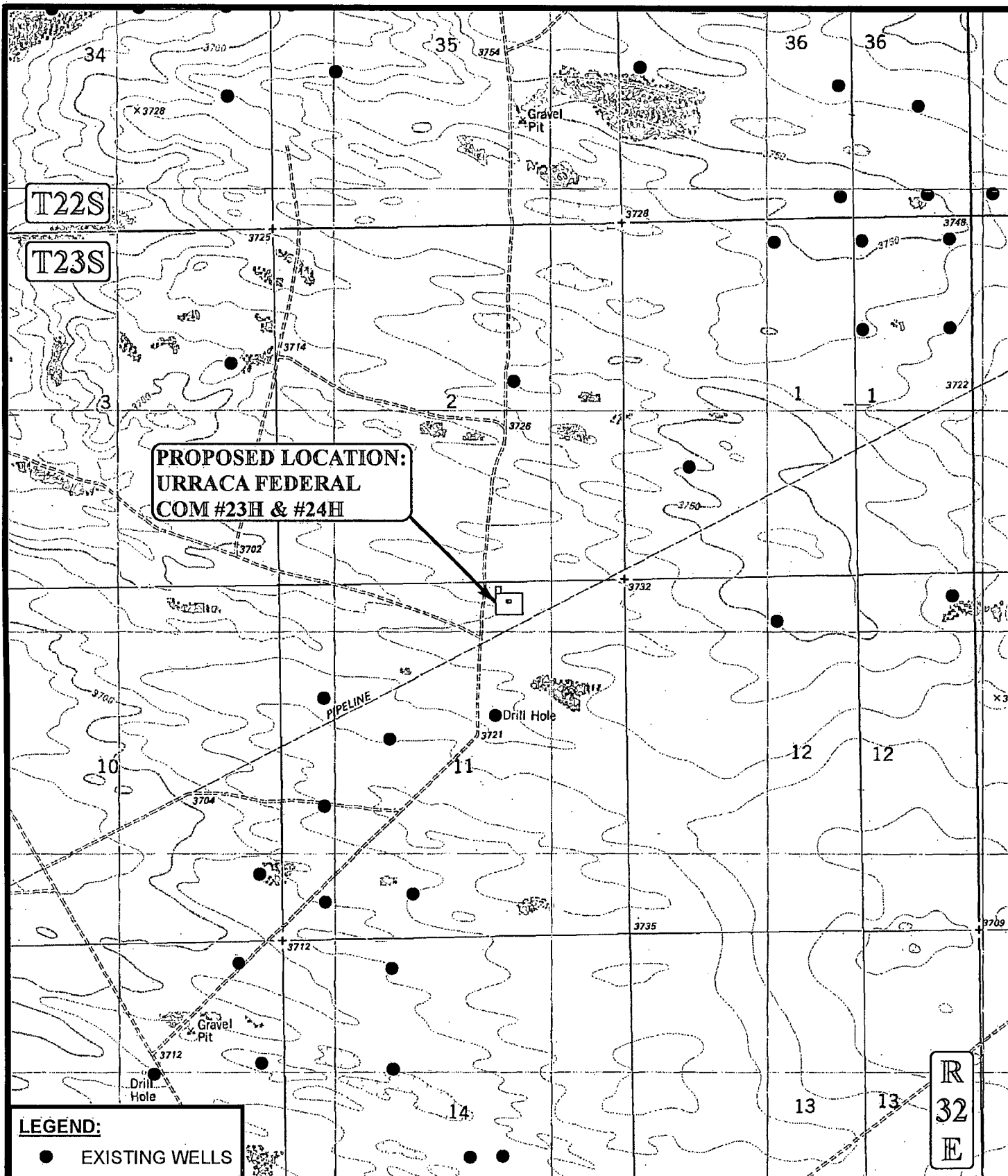
URRACA FEDERAL COM #23H & #24H
SECTION 11, T23S, R32E, N.M.P.M.
NW 1/4 NE1/4

PUBLIC ACCESS ROAD MAP

EXHIBIT B



Corporate Office * 85 South 200 East
Vernal, UT 84078 * (435) 789-1017



SCALE: 1" = 2000'

REVISED: 00-00-00

DRAWN BY: L.S.

DATE DRAWN: 12-18-13



CIMAREX ENERGY CO.

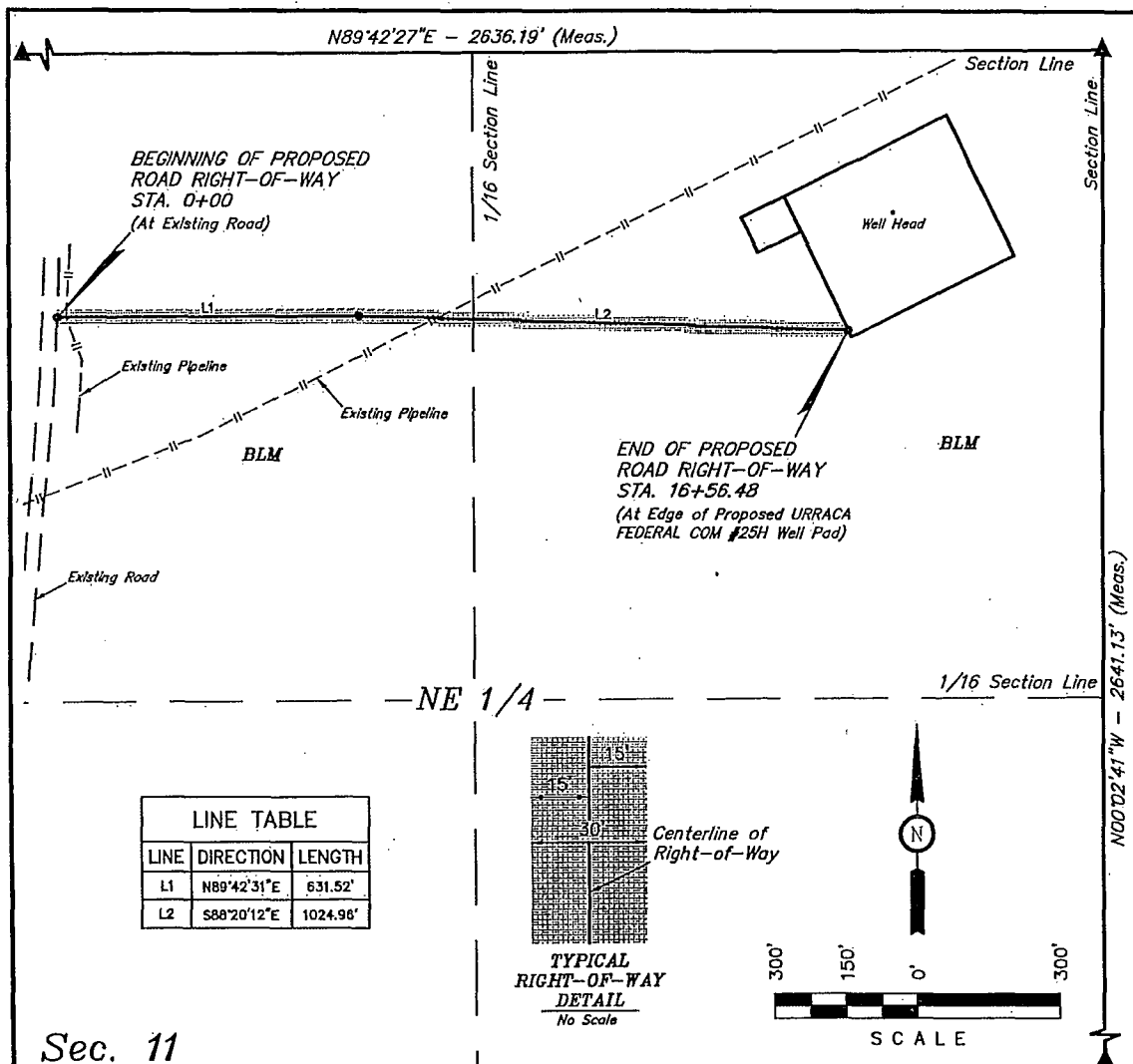
URRACA FEDERAL COM #23H & #24H
SECTION 11, T23S, R32E, N.M.P.M.
NW 1/4 NE1/4

USGS TOPOGRAPHIC MAP

EXHIBIT C



Corporate Office * 85 South 200 East
Vernal, UT 84078 * (435) 789-1017



Sec. 11

ROAD RIGHT-OF-WAY DESCRIPTION

A 30' WIDE RIGHT-OF-WAY 15' ON EACH SIDE OF THE FOLLOWING DESCRIBED CENTERLINE.

BEGINNING AT A POINT IN THE NW 1/4 NE 1/4 OF SECTION 11, T23S, R32E, N.M.P.M., WHICH BEARS S39°55'54"E 694.74' FROM THE NORTH 1/4 CORNER OF SAID SECTION 11, THENCE N89°42'31"E 631.52'; THENCE S88°20'12"E 1024.96' TO A POINT IN THE NE 1/4 NE 1/4 OF SAID SECTION 11, WHICH BEARS S43°00'18"W 783.18' FROM THE NORTHEAST CORNER OF SAID SECTION 11. THE SIDE LINES OF SAID DESCRIBED RIGHT-OF-WAY BEING SHORTENED OR ELONGATED TO MEET THE GRANTOR'S PROPERTY LINES. BASIS OF BEARINGS IS A G.P.S. OBSERVATION. CONTAINS 1.141 ACRES MORE OR LESS.

BEGINNING OF ROAD STA. 0+00 BEARS
S39°55'54"E 694.74' FROM THE NORTH 1/4
CORNER OF SECTION 11, T23S, R32E,
N.M.P.M.

END OF ROAD STA. 16+56.48 BEARS
S43°00'18"W 783.18' FROM THE NORTHEAST
CORNER OF SECTION 11, T23S, R32E,
N.M.P.M.

RIGHT-OF-WAY LENGTHS

DESCRIPTION	FEET	ACRES	RODS
BLM	1656.48	1.141	100.39

▲ = SECTION CORNERS LOCATED.

NOTES:

- The maximum grade of existing ground for the proposed access road is $\pm 1.0\%$.

THIS IS TO CERTIFY THAT THE ABOVE PLAT WAS PREPARED FROM
FIELD NOTES OF ACTUAL SURVEYS MADE BY ME OR UNDER MY
SUPERVISION AND THAT THE SAME ARE TRUE AND CORRECT TO THE
BEST OF MY KNOWLEDGE AND BELIEF.

CERTIFICATE OF PROFESSIONAL SURVEYOR

REGISTERED LAND SURVEYOR
REGISTRATION NO. 12446
STATE OF NEW MEXICO
01-02-14



Corporate Office * 85 South 200 East
Vernal, UT 84078 * (435) 789-1017



CIMAREX ENERGY CO.

URRACA FEDERAL COM #25H
SECTION 11, T23S, R32E, N.M.P.M.
330' FNL 440' FEL

DRAWN BY: B.D.H.

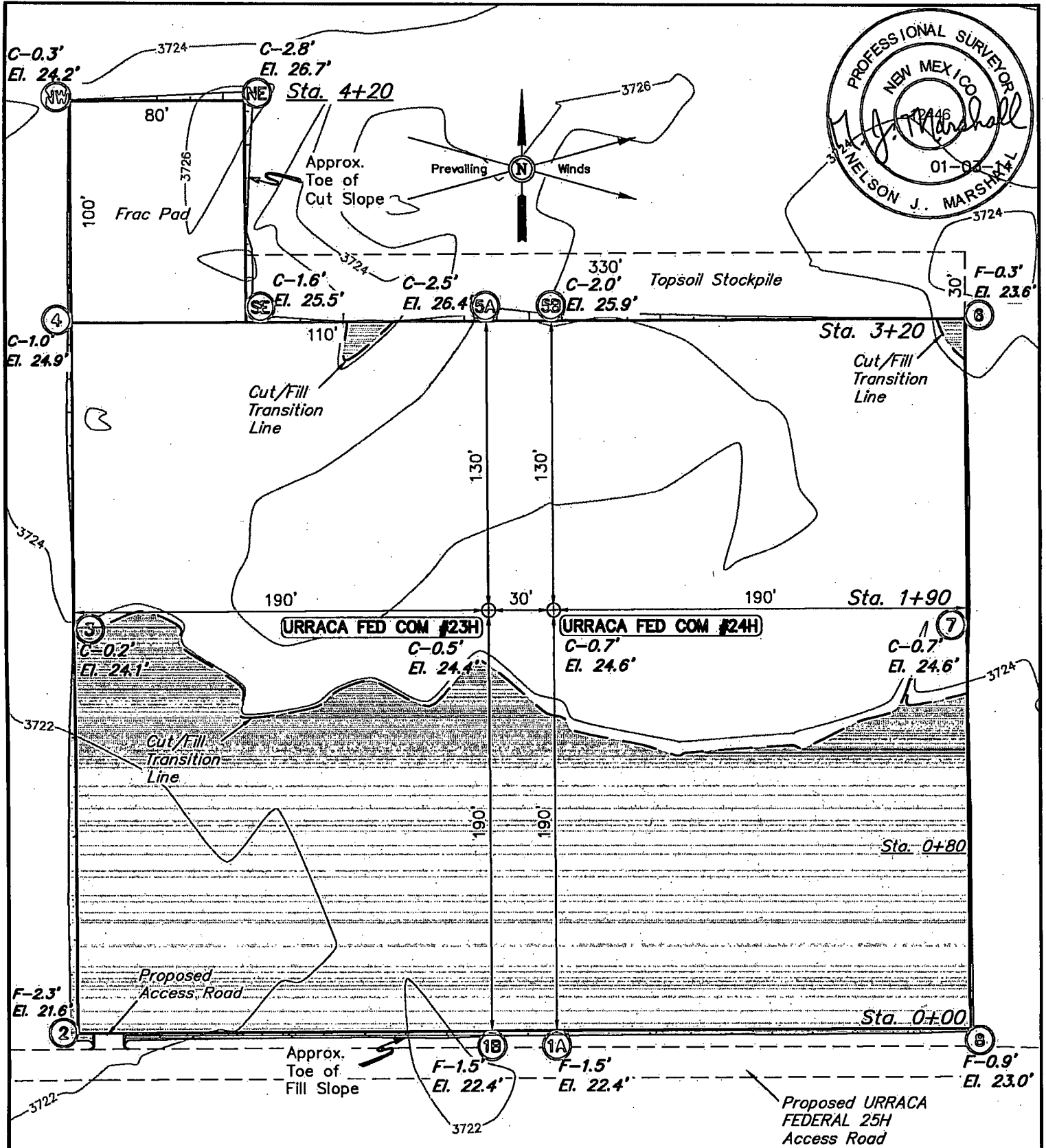
SCALE: 1" = 300'

DATE: 12-19-13

REVISED:

ACCESS ROAD R-O-W

EXHIBIT C-2



ELEV. UNGRADED GROUND AT #23 LOC. STAKE = 3724.4' FINISHED GRADE ELEV. AT #23 LOC. STAKE = 3723.9'

NOTES:

- Flare pit is to be located a min. of 100' from the well head.
- Underground utilities shown on this sheet are for visualization purposes only, actual locations to be determined prior to construction.



CIMAREX ENERGY CO.

URRACA FEDERAL COM #23H & #24H
SECTION 11, T23S, R32E, N.M.P.M.
NW 1/4 NE 1/4

DRAWN BY: B.D.H.

SCALE: 1" = 60'

DATE: 12-23-13

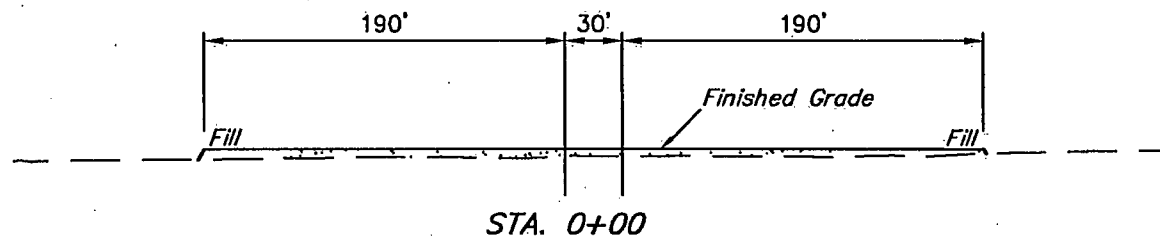
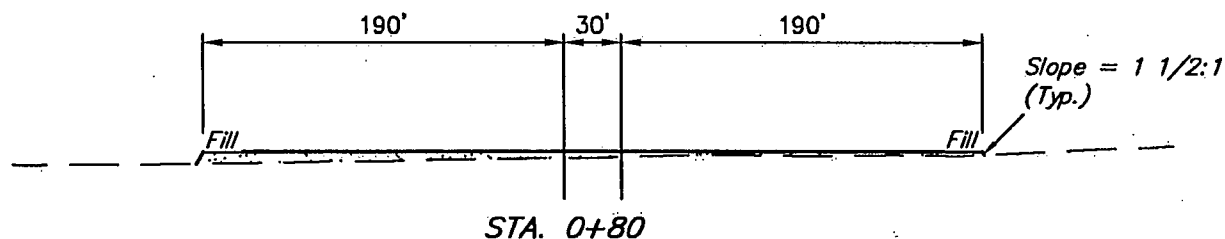
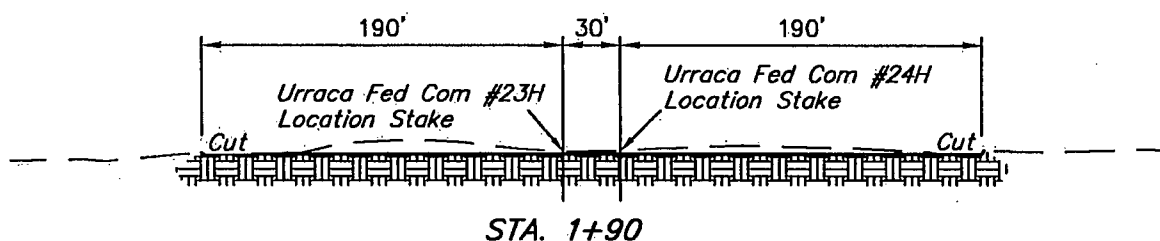
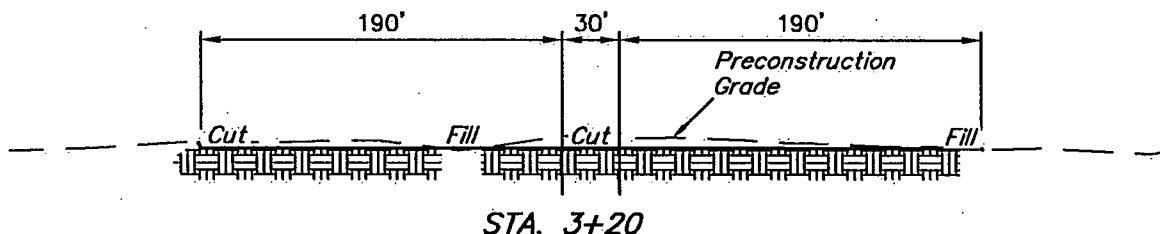
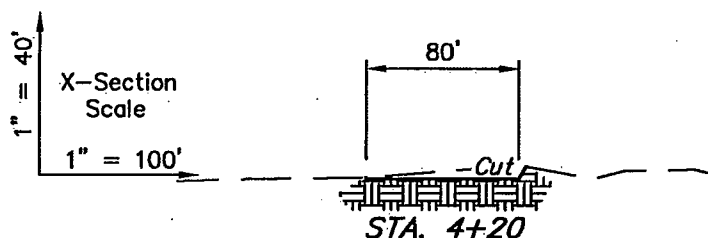
REVISED:

LOCATION LAYOUT

EXHIBIT D



Corporate Office * 85 South 200 East
Vernal, UT 84078 * (435) 789-1017



APPROXIMATE EARTHWORK QUANTITIES		APPROXIMATE SURFACE DISTURBANCE AREAS		
(3") TOPSOIL STRIPPING	1,320 Cu. Yds.		DISTANCE	ACRES
REMAINING LOCATION	3,730 Cu. Yds.	WELL SITE DISTURBANCE	NA	±3.480
TOTAL CUT	5,050 Cu. Yds.	ACCESS ROAD DISTURBANCE	±15.03'	±0.010
FILL	3,730 Cu. Yds.	PIPELINE DISTURBANCE	±35.08'	±0.008
EXCESS MATERIAL	1,320 Cu. Yds.			
TOPSOIL	1,320 Cu. Yds.			
EXCESS UNBALANCE (After Interim Rehabilitation)	0 Cu. Yds.	TOTAL DISTURBANCE	±50.11'	±3.498

- NOTES:
- Fill quantity includes 5% for compaction.
 - Topsoil should not be stripped below finished grade on substructure area.



CIMAREX ENERGY CO.

URRACA FEDERAL COM #23H & #24H
SECTION 11, T23S, R32E, N.M.P.M.
NW 1/4 NE 1/4

DRAWN BY: B.D.H.

SCALE: AS SHOWN

DATE: 12-23-13

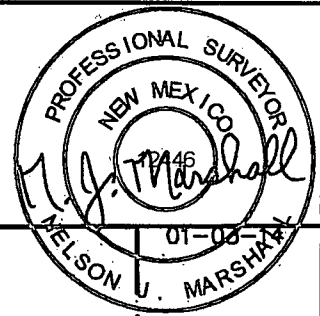
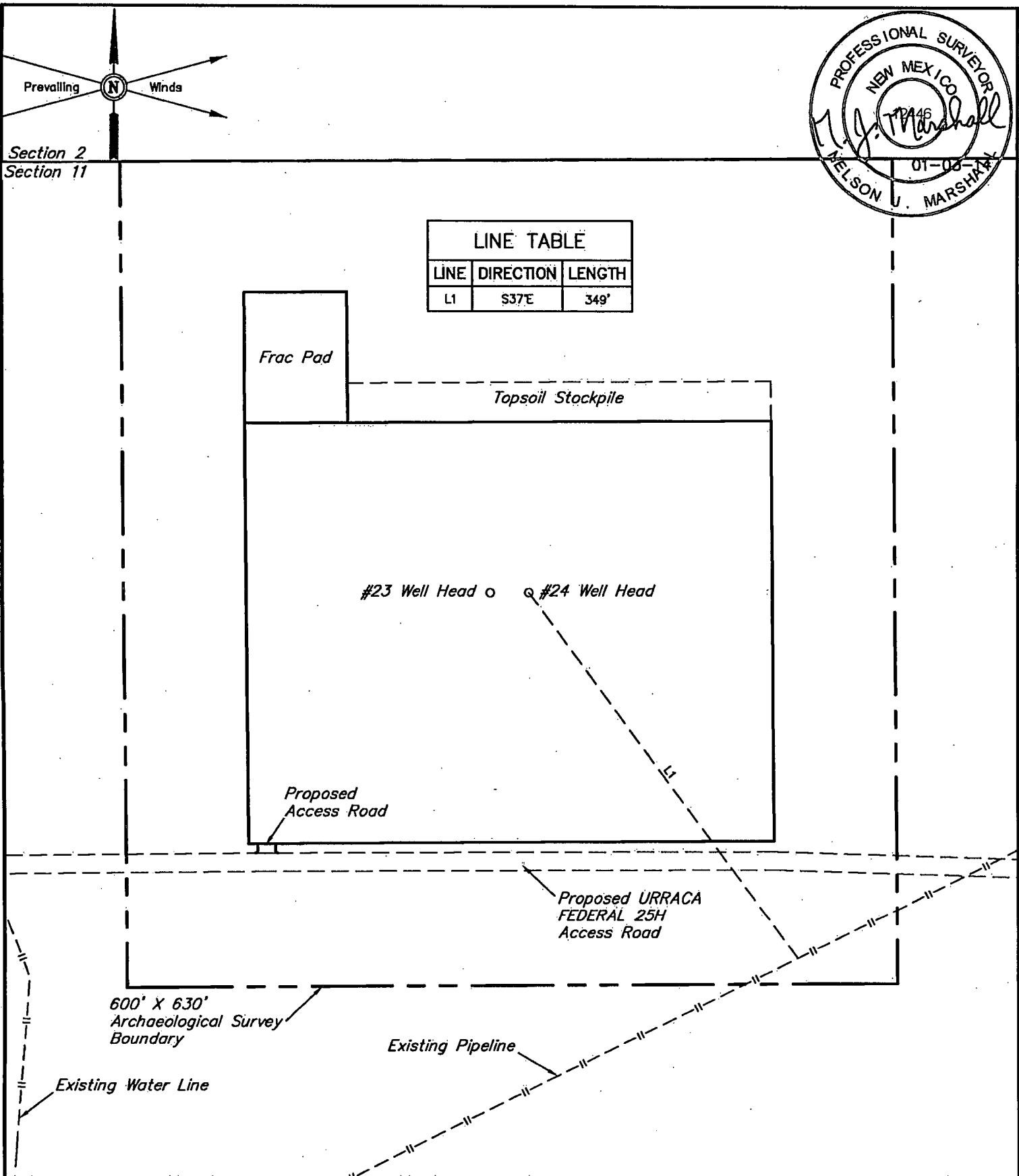
REVISED:

TYPICAL CROSS SECTIONS

EXHIBIT D



Corporate Office * 85 South 200 East
Vernal, UT 84078 * (435) 789-1017



LINE TABLE		
LINE	DIRECTION	LENGTH
L1	S37°E	349'

NOTES:



CIMAREX ENERGY CO.

URRACA FEDERAL COM #23H & #24H
SECTION 11, T23S, R32E, N.M.P.M.
NW 1/4 NE 1/4

DRAWN BY: B.D.H.

SCALE: 1" = 100'

DATE: 12-23-13

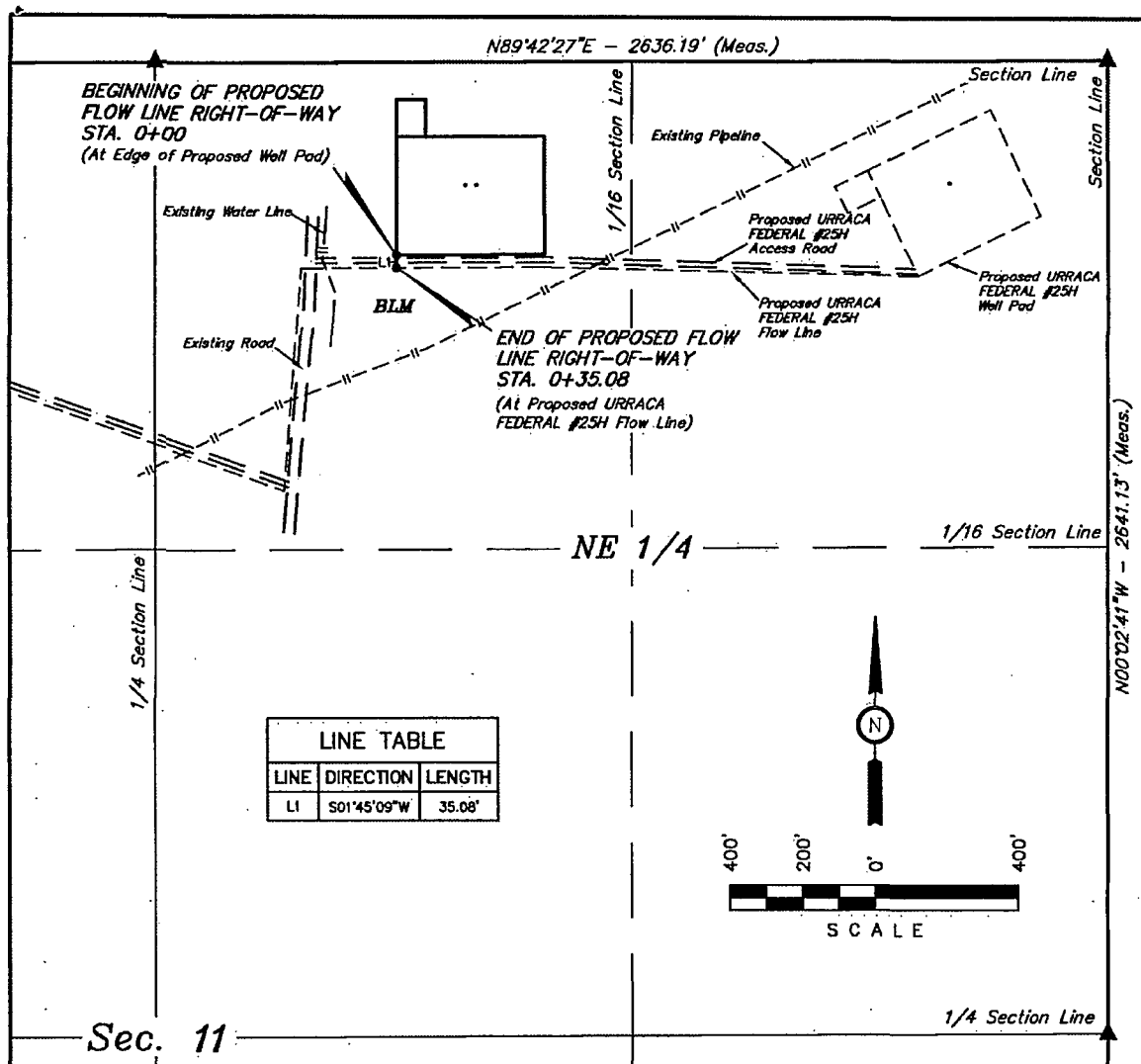
REVISED:

**ARCHAEOLOGICAL SURVEY
BOUNDARY**

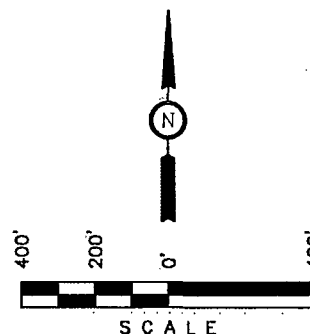
EXHIBIT D



Corporate Office * 85 South 200 East
Vernal, UT 84078 * (435) 789-1017



LINE TABLE		
LINE	DIRECTION	LENGTH
L1	S01°45'09\"W	35.08'



FLOW LINE RIGHT-OF-WAY DESCRIPTION

A 10' WIDE RIGHT-OF-WAY 5' ON EACH SIDE OF THE FOLLOWING DESCRIBED CENTERLINE.

BEGINNING AT A POINT IN THE NW 1/4 NE 1/4 OF SECTION 11, T23S, R32E, N.M.P.M., WHICH BEARS S52°15'27\"E 843.96' FROM THE NORTH 1/4 CORNER OF SAID SECTION 11, THENCE S01°45'09\"W 35.08' TO A POINT IN THE NW 1/4 NE 1/4 OF SAID SECTION 11, WHICH BEARS FROM THE NORTH 1/4 CORNER OF SAID SECTION 11. THE SIDE LINES OF SAID DESCRIBED RIGHT-OF-WAY BEING SHORTENED OR ELONGATED TO MEET THE GRANTOR'S PROPERTY LINES. BASIS OF BEARINGS IS A G.P.S. OBSERVATION. CONTAINS 0.008 ACRES MORE OR LESS.

BEGINNING OF FLOW LINE STA. 0+00 BEARS S52°15'27\"E 843.96' FROM THE NORTH 1/4 CORNER OF SECTION 11, T23S, R32E, N.M.P.M.

END OF FLOW LINE STA. 0+35.08 BEARS S50°22'38\"E 865.04' FROM THE NORTH 1/4 CORNER OF SECTION 11, T23S, R32E, N.M.P.M.

RIGHT-OF-WAY LENGTHS			
DESCRIPTION	FEET	ACRES	RODS
BLM	35.08	0.008	2.13

▲ = SECTION CORNERS LOCATED.

THIS IS TO CERTIFY THAT THE ABOVE PLAT WAS PREPARED FROM FIELD NOTES OF ACTUAL SURVEYS MADE BY ME OR UNDER MY SUPERVISION AND THAT THE SAME ARE TRUE AND CORRECT TO THE BEST OF MY KNOWLEDGE AND BELIEF.

CERTIFICATE OF PROFESSIONAL SURVEYOR
 Nelson J. Marshall
 REGISTERED LAND SURVEYOR
 REGISTRATION NO. 12446
 STATE OF NEW MEXICO
 01-03-14

NOTES:

CIMAREX

CIMAREX ENERGY CO.

URRACA FEDERAL COM #23H & #24H
 SECTION 11, T23S, R32E, N.M.P.M.
 NW 1/4 NE 1/4

DRAWN BY: B.D.H.

SCALE: 1" = 400'

DATE: 12-23-13

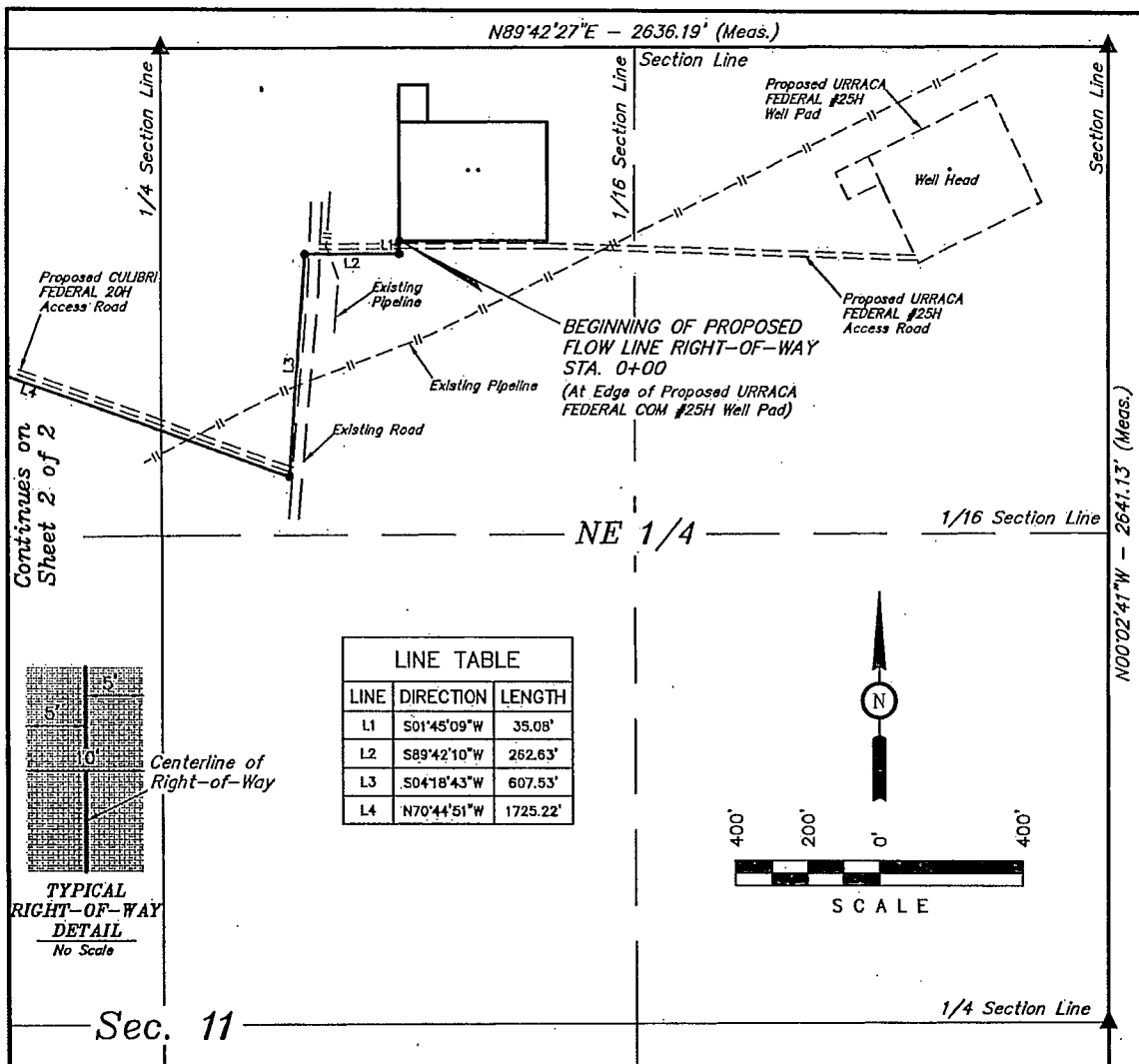
REVISED:

FLOW LINE R-O-W

EXHIBIT C-1



Corporate Office * 85 South 200 East
 Vernal, UT 84078 * (435) 789-1017



FLOW LINE RIGHT-OF-WAY DESCRIPTION

A 10' WIDE RIGHT-OF-WAY 5' ON EACH SIDE OF THE FOLLOWING DESCRIBED CENTERLINE.

BEGINNING AT A POINT IN THE NW 1/4 NE 1/4 OF SECTION 11, T23S, R32E, N.M.P.M., WHICH BEARS S52°15'27"E 843.96' FROM THE NORTHEAST CORNER OF SAID SECTION 11, THENCE S01°45'09"W 35.08'; THENCE S89°42'10"W 262.63'; THENCE S04°18'43"W 607.53'; THENCE N70°44'51"W 1725.22'; THENCE N88°41'16"W 736.30'; THENCE N00°04'08"W 34.98' TO A POINT IN THE NW 1/4 NW 1/4 OF SAID SECTION 11, WHICH BEARS S50°43'55"E 815.87' FROM THE NORTHWEST CORNER OF SAID SECTION 11. THE SIDE LINES OF SAID DESCRIBED RIGHT-OF-WAY BEING SHORTENED OR ELONGATED TO MEET THE GRANTOR'S PROPERTY LINES. BASIS OF BEARINGS IS A G.P.S. OBSERVATION. CONTAINS 0.781 ACRES MORE OR LESS.

BEGINNING OF FLOW LINE STA. 0+00 BEARS S52°15'27"E 843.96' FROM THE NORTH 1/4 CORNER OF SECTION 11, T23S, R32E, N.M.P.M.

RIGHT-OF-WAY LENGTHS			
DESCRIPTION	FEET	ACRES	RODS
NE 1/4 SEC. 11	1283.45	0.295	77.78
NW 1/4 SEC. 11	2118.28	0.486	128.38
TOTAL	3401.73	0.781	206.17

▲ = SECTION CORNERS LOCATED.

CERTIFICATE OF PROFESSIONAL SURVEY
THIS IS TO CERTIFY THAT THE ABOVE PLAT WAS PREPARED FROM FIELD NOTES OF ACTUAL SURVEYS MADE BY ME OR UNDER MY SUPERVISION AND THAT THE SAME ARE TRUE AND CORRECT TO THE BEST OF MY KNOWLEDGE AND BELIEF.

REGISTERED LAND SURVEYOR
REGISTRATION NO. 12446
STATE OF NEW MEXICO

04-23-14
Sheet 1 of 2

NOTES:



Corporate Office * 85 South 200 East
Vernal, UT 84078 * (435) 789-1017



CIMAREX ENERGY CO.

URRACA FEDERAL COM #23H & #24H
SECTION 11, T23S, R32E, N.M.P.M.
NW 1/4 NE 1/4

DRAWN BY: B.D.H.

SCALE: 1" = 400'

DATE: 12-19-13



REVISED: 04-21-14

FLOWLINE R-O-W

EXHIBIT G-1

BEGINNING AT THE INTERSECTION OF JAL HIGHWAY/ HWY 128 AND AN EXISTING ROAD TO THE NORTHEAST LOCATED IN THE SE 1/4, OF SECTION 1, T24S, R31E, N.M.P.M. PROCEED IN A NORTHEASTERLY DIRECTION APPROXIMATELY 5.6 MILES TO THE JUNCTION OF THIS ROAD AND AN EXISTING ROAD TO THE NORTHWEST; TURN LEFT AND PROCEED IN A NORTHWESTERLY DIRECTION APPROXIMATELY 1.4 MILES TO THE JUNCTION OF THIS ROAD AND AN EXISTING ROAD TO THE NORTHEAST; TURN RIGHT AND PROCEED IN A NORTHEASTERLY, THEN NORTHERLY DIRECTION APPROXIMATELY 1.6 MILES TO THE BEGINNING OF THE PROPOSED ACCESS FOR THE URRACA FEDERAL 25H TO THE EAST; FOLLOW ROAD FLAGS IN AN EASTERLY DIRECTION APPROXIMATELY 234' TO THE BEGINNING OF THE PROPOSED ACCESS TO THE NORTH; FOLLOW ROAD FLAGS IN A NORTHERLY DIRECTION APPROXIMATELY 15' TO THE PROPOSED LOCATION.

TOTAL DISTANCE FROM THE INTERSECTION OF JAL HIGHWAY/ HWY 128 AND AN EXISTING ROAD TO THE NORTHEAST LOCATED IN THE SE 1/4 OF SECTION 1, T24S, R31E, N.M.P.M. HIGHWAY/ HWY 128 TO THE PROPOSED LOCATION IS APPROXIMATELY 8.9 MILES.

DRAWN BY: L.S.	REVISED: 00-00-00	 CIMAREX ENERGY CO.
DATE DRAWN: 12-18-13		
 Corporate Office * 85 South 200 East Vernal, UT 84078 * (435) 789-1017		URRACA FEDERAL COM #23H & #24H SECTION 11, T23S, R32E, N.M.P.M. NW 1/4 NE1/4
		ROAD DESCRIPTION
		EXHIBIT J