

District I  
1625 N. French Dr., Hobbs, NM 88240  
Phone: (575) 393-6161 Fax: (575) 393-0720  
District II  
811 S. First St., Artesia, NM 88210  
Phone: (575) 748-1283 Fax: (575) 748-9720  
District III  
1000 Rio Brazos Road, Aztec, NM 87410  
Phone: (505) 334-6178 Fax: (505) 334-6170  
District IV  
1220 S. St. Francis Dr., Santa Fe, NM 87505  
Phone: (505) 476-3460 Fax: (505) 476-3462

State of New Mexico  
Energy, Minerals & Natural Resources  
Department  
OIL CONSERVATION DIVISION  
1220 South St. Francis Dr.  
Santa Fe, NM 87505

FORM C-102

Revised August 1, 2011

Submit one copy to appropriate

District Office

☐ AMENDED REPORT

WELL LOCATION AND ACREAGE DEDICATION PLAT

<sup>1</sup> API Number 30-025- 41665	<sup>2</sup> Pool Code 96434	<sup>3</sup> Pool Name Red Hills; Bone Spring, North
<sup>4</sup> Property Code 40398	<sup>5</sup> Property Name JOLLY ROGER 16 STATE	
<sup>7</sup> OGRID No. 7377	<sup>8</sup> Operator Name EOG RESOURCES, INC.	<sup>6</sup> Well Number #1H  <sup>9</sup> Elevation 3551'

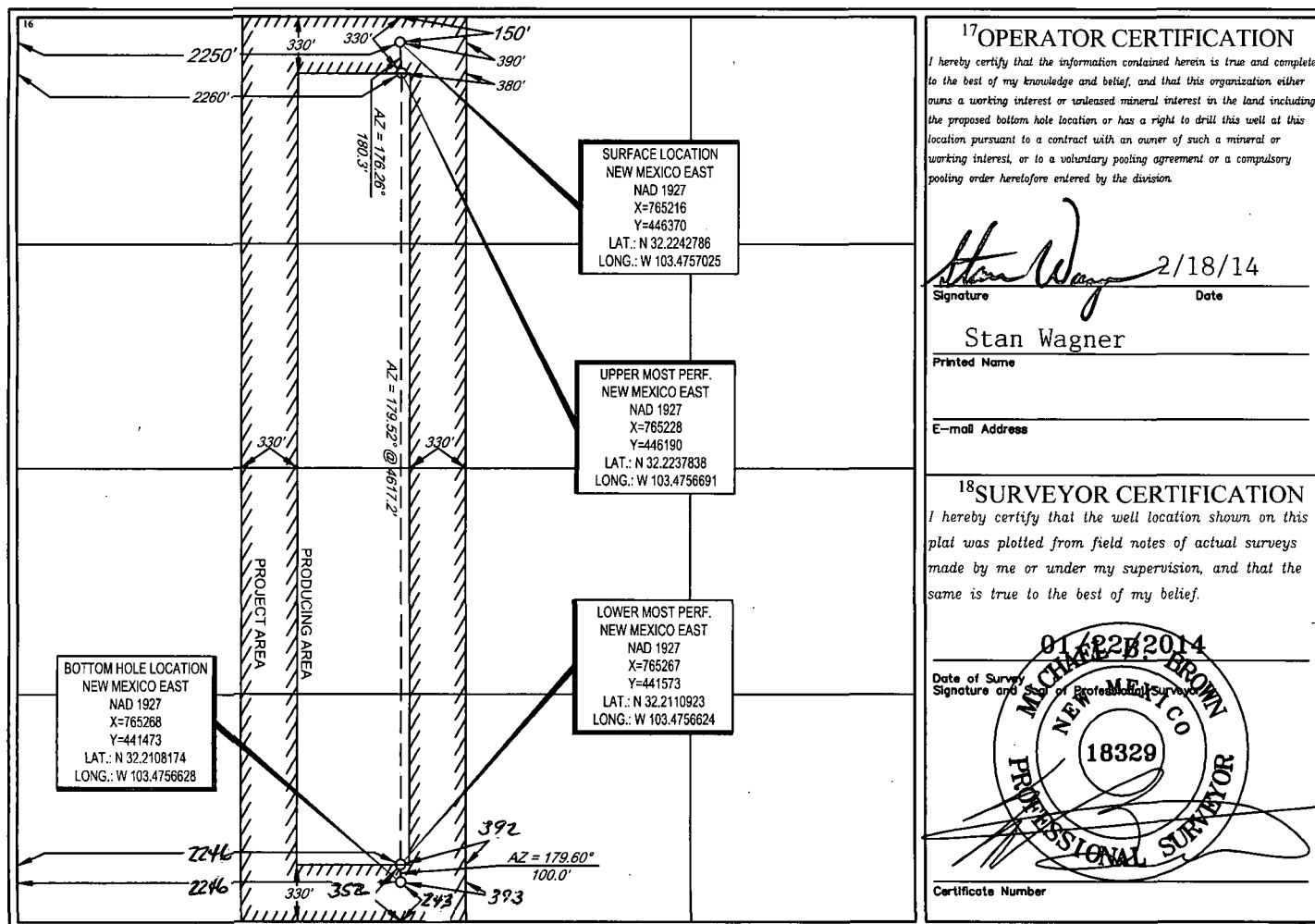
<sup>10</sup>Surface Location

UL or lot no.	Section	Township	Range	Lot Idn	Feet from the	North/South line	Feet from the	East/West line	County
C	16	24-S	34-E	-	150'	NORTH	2250'	WEST	LEA

UL or lot no.	Section	Township	Range	Lot Idn	Feet from the	North/South line	Feet from the	East/West line	County
N	16	24-S	34-E	-	243 2245	SOUTH	2246	WEST	LEA

<sup>12</sup> Dedicated Acres 160	<sup>13</sup> Joint or Infill	<sup>14</sup> Consolidation Code	<sup>15</sup> Order No. 2257
--------------------------------------	-------------------------------	----------------------------------	---------------------------------

No allowable will be assigned to this completion until all interests have been consolidated or a non-standard unit has been approved by the division.

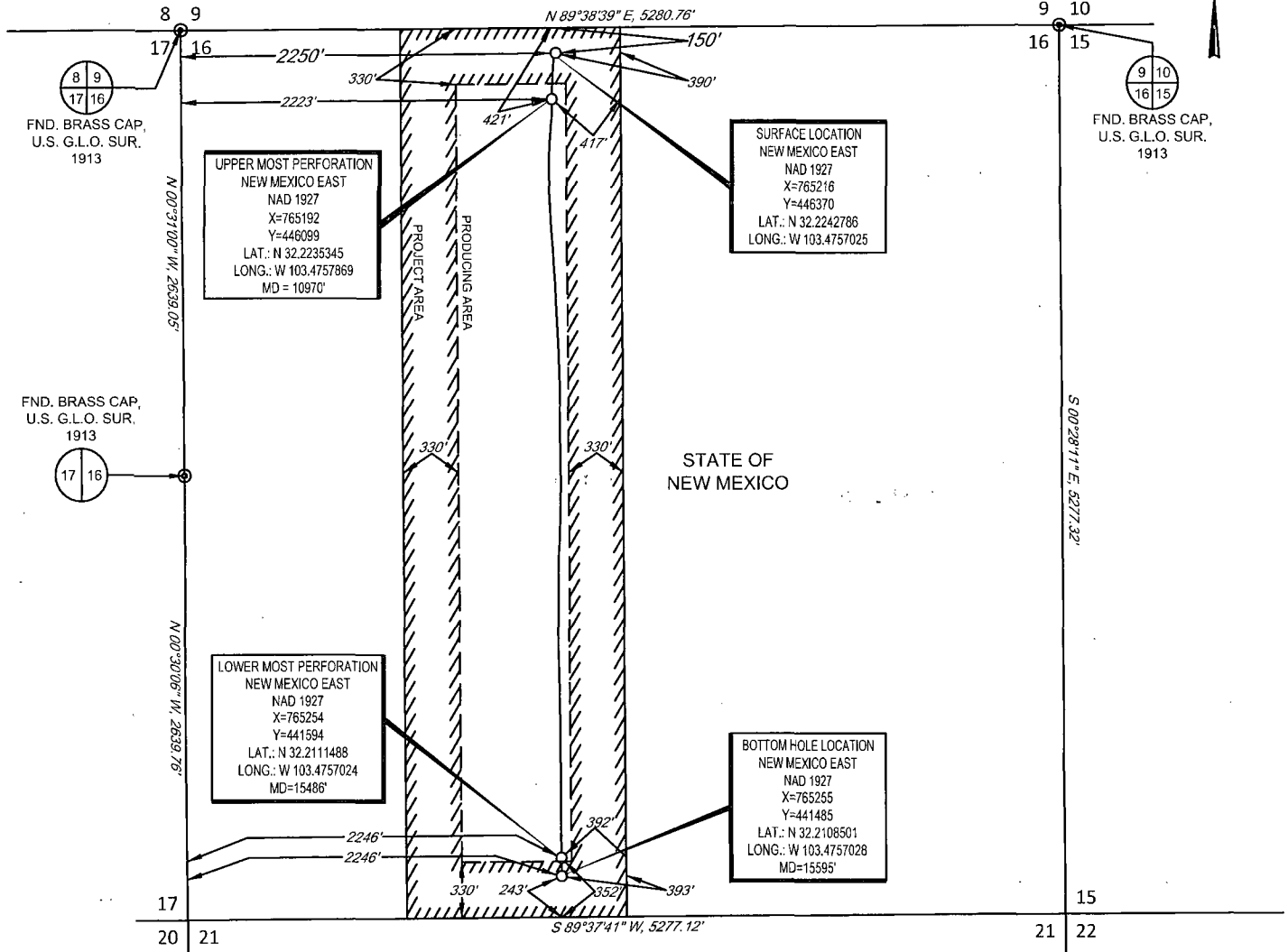


SEP 16 2014

SCALE: 1" = 1000'

0' 500' 1000'

SECTION 16, TOWNSHIP 24 SOUTH, RANGE 33 EAST, N.M.P.M.  
LEA COUNTY, NEW MEXICO

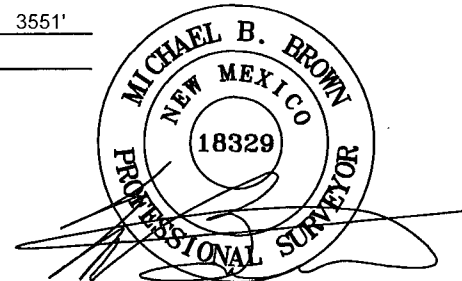


LEASE NAME & WELL NO.: JOLLY ROGER 16 STATE #1H  
SECTION 16 TWP 24-S RGE 33-E SURVEY N.M.P.M.  
COUNTY LEA STATE NM ELEVATION 3551'  
DESCRIPTION 150' FNL & 2250' FWL



TOPOGRAPHIC  
LOYALTY INNOVATION LEGACY

1400 EVERMAN PARKWAY, Ste. 197 • FT. WORTH, TEXAS 76140  
TELEPHONE: (817) 744-7512 • FAX (817) 744-7548  
2903 NORTH BIG SPRING • MIDLAND, TEXAS 79705  
TELEPHONE: (432) 682-1653 OR (800) 767-1653 • FAX (432) 682-1743  
WWW.TOPOGRAPHIC.COM



Michael Blake Brown, P.S. No. 18329  
JULY 25, 2014

JOLLY ROGER 16 STATE #1H AS-COMPLETED	REVISION:	
	INT	DATE
DATE: 07/25/14		
FILE: AD_JOLLYROGER16STATE_1H		
DRAWN BY: G.O.		
SHEET: 1 OF 1		

NOTES:

1. ORIGINAL DOCUMENT SIZE: 8.5" X 11"
2. ALL BEARINGS, DISTANCES, AND COORDINATE VALUES CONTAINED HEREIN ARE GRID BASED UPON THE NEW MEXICO STATE PLANE COORDINATE SYSTEM, EAST ZONE, U.S. SURVEY FEET, NORTH AMERICAN DATUM 1927.
3. THIS EASEMENT/SERVITUDE LOCATION SHOWN HEREON HAS BEEN SURVEYED ON THE GROUND UNDER MY SUPERVISION AND PREPARED ACCORDING TO THE EVIDENCE FOUND AT THE TIME OF SURVEY, AND DATA PROVIDED BY EOG RESOURCES, INC. THIS CERTIFICATION IS MADE AND LIMITED TO THOSE PERSONS OR ENTITIES SHOWN ON THE FACE OF THIS PLAT AND IS NON-TRANSFERABLE. THIS SURVEY IS CERTIFIED FOR THIS TRANSACTION ONLY.