

SEP 16 2014

DISTRICT I
1625 N. French Dr., Hobbs, NM 88240
Phone: (575) 393-6161 Fax: (575) 393-0720

DISTRICT II
811 S. First St., Artesia, NM 88210
Phone: (575) 748-1283 Fax: (575) 748-9720

DISTRICT III
1000 Rio Brazos Road, Aztec, NM 87410
Phone: (505) 334-6178 Fax: (505) 334-6170

DISTRICT IV
1220 S. St. Francis Dr., Santa Fe, NM 87505
Phone: (505) 476-3460 Fax: (505) 476-3462

RECEIVED State of New Mexico
Energy, Minerals & Natural Resources Department

OIL CONSERVATION DIVISION

1220 South St. Francis Dr.
Santa Fe, New Mexico 87505

Form C-102

Revised August 1, 2011

Submit one copy to appropriate
District Office

□ AMENDED REPORT

WELL LOCATION AND ACREAGE DEDICATION PLAT

API Number 30-015-025-42122	Pool Code 97293 96553	Pool Name Ojo Chiso; Bone Spring, South
Property Code 313707	Property Name 8711 CHISO 14 STATE	Well Number 1H
OGRID No. 260297	Operator Name BTA OIL PRODUCERS, LLC	Elevation 3513'

Surface Location

UL or lot No.	Section	Township	Range	Lot Idn	Feet from the	North/South line	Feet from the	East/West line	County
D	14	22-S	34-E		180	NORTH	250	WEST	LEA

Bottom Hole Location If Different From Surface

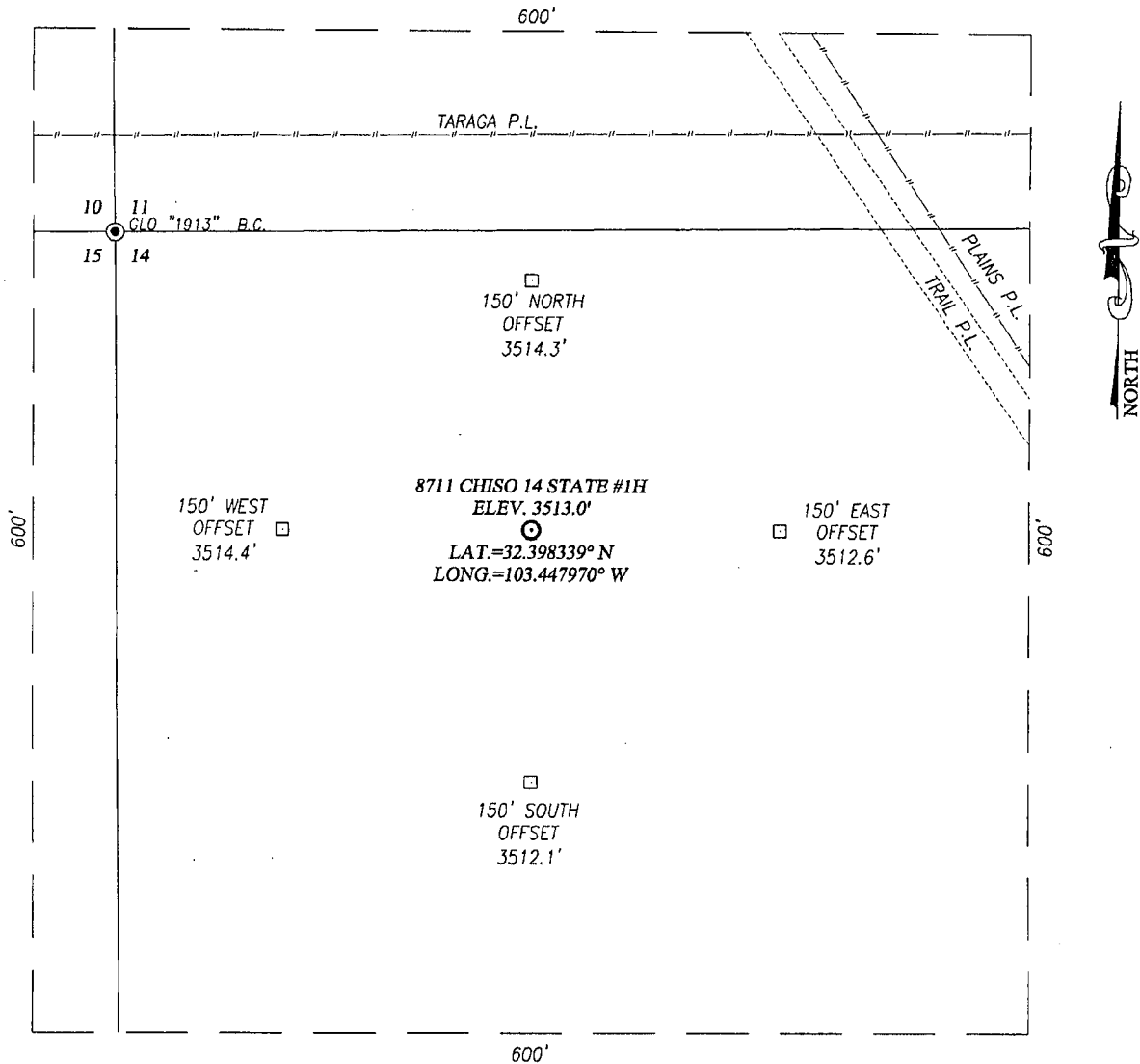
UL or lot No.	Section	Township	Range	Lot Idn	Feet from the	North/South line	Feet from the	East/West line	County
M	14	22-S	34-E		330	SOUTH	380	WEST	LEA

Dedicated Acres	Joint or Infill	Consolidation Code	Order No.
160			

NO ALLOWABLE WILL BE ASSIGNED TO THIS COMPLETION UNTIL ALL INTERESTS HAVE BEEN CONSOLIDATED OR A NON-STANDARD UNIT HAS BEEN APPROVED BY THE DIVISION

<p>GRID AZ. = 178°06'07" HORIZ. DIST. = 4766.8'</p> <p>380' B.H. 330'</p>	<p>GEODETIC COORDINATES NAD 27 NME SURFACE LOCATION</p> <p>Y=509761.8 N X=773269.3 E</p> <p>LAT. = 32.398340° N LONG. = 103.447970° W</p>	<p>OPERATOR CERTIFICATION</p> <p>I hereby certify that the information herein is true and complete to the best of my knowledge and belief, and that this organization either owns a working interest or unleased mineral interest in the land including the proposed bottom hole location or has a right to drill this well at this location pursuant to a contract with an owner of such mineral or working interest, or to a voluntary pooling agreement or a compulsory pooling order heretofore entered by the division.</p> <p><i>Pam Inskeep</i> 09/12/14 Signature Date</p> <p>Pam Inskeep, Regulatory Admin. Printed Name</p> <p>pinskeep@btaoil.com E-mail Address</p>
	<p>CORNER COORDINATES TABLE</p> <p>A - Y=509939.5 N, X=773018.2 E B - Y=509951.3 N, X=774337.4 E C - Y=504675.6 N, X=774368.6 E D - Y=504665.8 N, X=773049.0 E</p>	<p>SURVEYOR CERTIFICATION</p> <p>I hereby certify that the well location shown on this plat was plotted from field notes of actual surveys made by me or under my supervision, and that the same is true and correct to the best of my belief.</p> <p>AUGUST 1, 2014</p> <p>Date of Survey</p> <p>Signature & Seal of Professional Surveyor:</p> <p><i>Ronald J. Eidson</i> 08/12/2014 Certificate Number: Gary S. Eidson 12641 Ronald J. Eidson 3239</p> <p>ACK JWSC W.O.: 14.11.0776</p>

SEP 18 2014

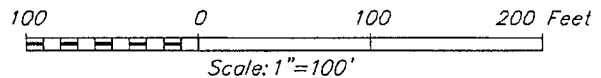


NOTE:
1) SEE "LOCATION VERIFICATION MAP"
FOR PROPOSED ROAD LOCATION.

ARCHEOLOGICAL SURVEY BOUNDARY

DIRECTIONS TO 8711 CHISO 14 STATE #1H:

FROM THE INTERSECTION OF ST. HWY. 207 AND ST. HWY. 176
IN EUNICE, NEW MEXICO. GO SOUTH ON ST. HWY. #207
APPROX. 2.5 MILES. TURN RIGHT AND GO WEST ON CO. RD.
#21 (DELAWARE BASIN ROAD), APPROX. 20.5 MILES. TURN
RIGHT AND GO NORTH 3.8 MILES. VEER RIGHT AND GO
NORTH-NORTHEAST APPROX. 1.35 MILES. TURN LEFT AND GO
WEST ON LEASE ROAD APPROX. 800 FEET TO MEWBOURNE
WELL-CABRA LOCA 11 BSOB ST#1H. CONTINUE WEST ALONG
TARGA P.L. APPROX. 2900 FEET TO THE LOCATION.



BTA OIL PRODUCERS, LLC

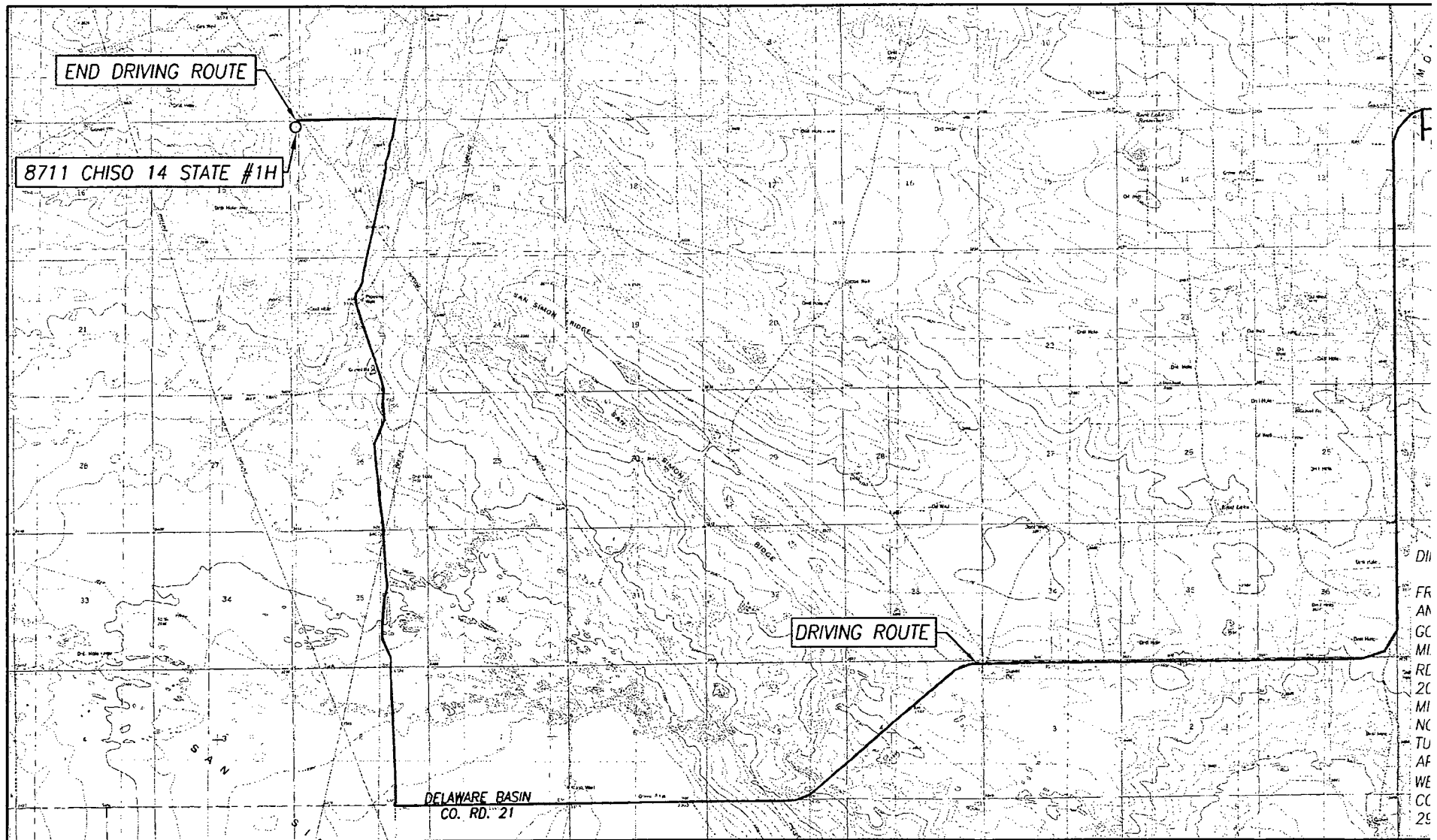
8711 CHISO 14 STATE #1H WELL
LOCATED 180 FEET FROM THE NORTH LINE
AND 250 FEET FROM THE WEST LINE OF SECTION 14,
TOWNSHIP 22 SOUTH, RANGE 34 EAST, N.M.P.M.,
LEA COUNTY, NEW MEXICO



PROVIDING SURVEYING SERVICES
SINCE 1946
JOHN WEST SURVEYING COMPANY
412 N. DAL PASO HOBBS, N.M. 88240
(575) 393-3117 www.jwsc.biz
TBPLS# 10021000

Survey Date: 8/1/14	CAD Date: 8/11/14	Drawn By: ACK
W.O. No.: 14110776	Rev: .	Rel. W.O.: Sheet 1 of 1

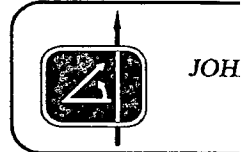
LOCATION VERIFICATION MAP



SEC. 14 TWP. 22-S RGE. 34-E
 COUNTY EDDY STATE NEW MEXICO
 DESCRIPTION 180' FNL & 250' FWL
 ELEVATION 3513'
 OPERATOR BTA OIL PRODUCERS, LLC
 LEASE 8711 CHISO 14 STATE
 U.S.G.S. TOPOGRAPHIC MAP
 SAN SIMON SINK, N.M. SURVEY N.M.P.M.

SCALE: 1" = 1 MILE

EAST LAKE, N.M. - 10
 OIL CENTER, N.M. -



DRIVING ROUTE:

