

DISTRICT I  
1625 N. French Dr., Hobbs, NM 88240  
Phone: (575) 393-6161 Fax: (575) 393-0720

DISTRICT II  
811 S. First St., Artesia, NM 88210  
Phone: (575) 748-1283 Fax: (575) 748-9720

DISTRICT III  
1000 Rio Brazos Road, Aztec, NM 87410  
Phone: (505) 334-6178 Fax: (505) 334-6170

DISTRICT IV  
1220 S. St. Francis Dr., Santa Fe, NM 87505  
Phone: (505) 476-3460 Fax: (505) 476-3462

State of New Mexico  
Energy, Minerals & Natural Resources Department  
OIL CONSERVATION DIVISION  
1220 South St. Francis Dr.  
Santa Fe, New Mexico 87505

HOBBES OCD  
SEP 18 2014  
RECEIVED

Form C-102  
Revised August 1, 2011  
Submit one copy to appropriate  
District Office

AMENDED REPORT

WELL LOCATION AND ACREAGE DEDICATION PLAT

API Number <b>30-025-418103</b>	Pool Code <b>97983</b>	Pool Name <b>WC-025 6-08 52035NED; Bone Spring</b>
Property Code <b>313270</b>	Property Name <b>PERLA VERDE 31 STATE</b>	Well Number <b>4H</b>
OGRID No. <b>005380</b>	Operator Name <b>XTO ENERGY</b>	Elevation <b>3699'</b>

Surface Location

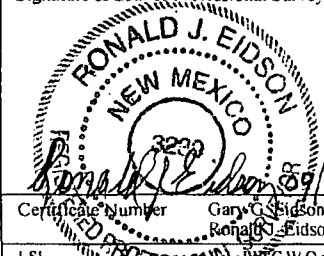
UL or lot No.	Section	Township	Range	Lot Idn	Feet from the	North/South line	Feet from the	East/West line	County
<b>P</b>	<b>31</b>	<b>19-S</b>	<b>35-E</b>		<b>170</b>	<b>SOUTH</b>	<b>700</b>	<b>EAST</b>	<b>LEA</b>

Bottom Hole Location If Different From Surface

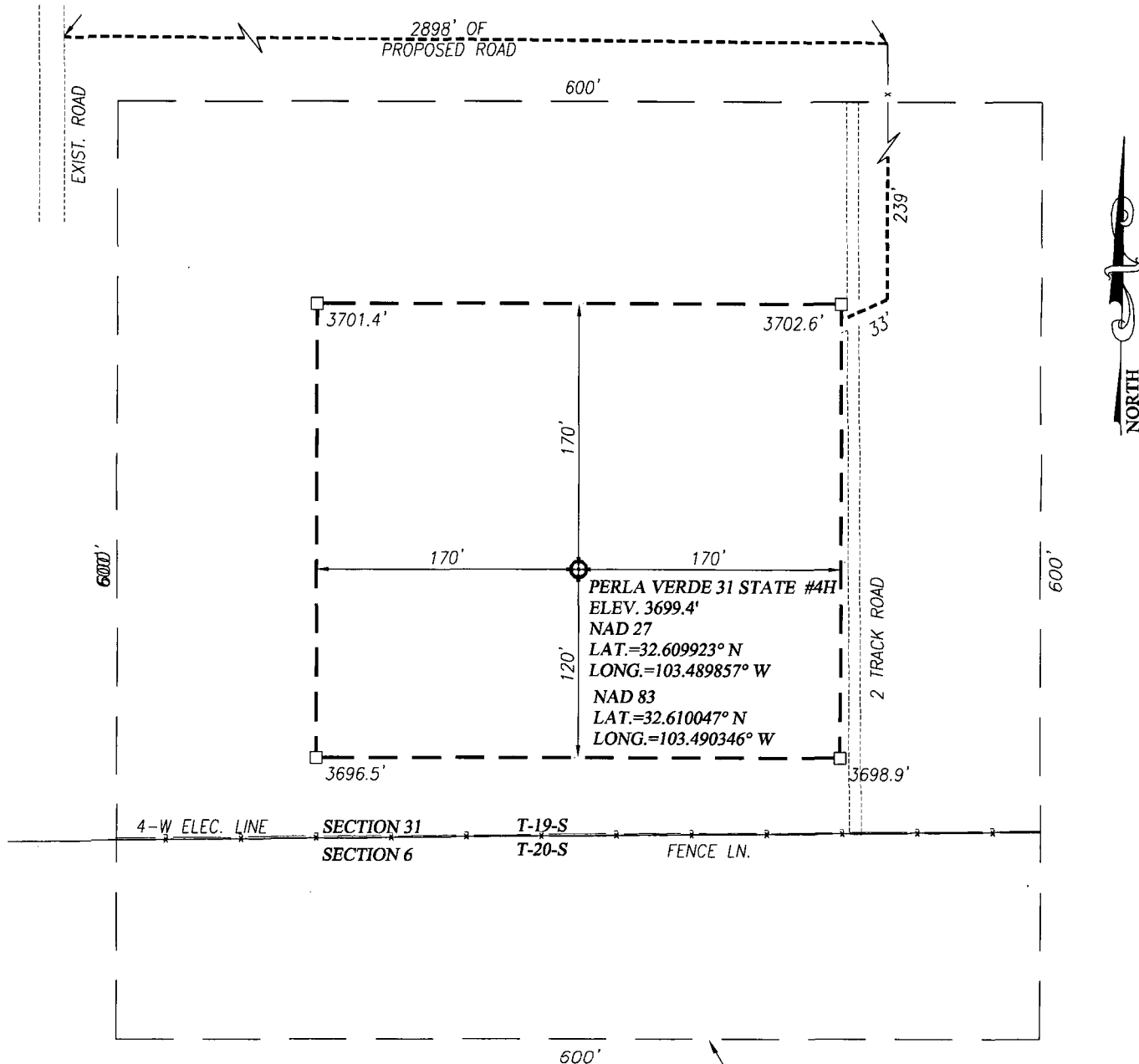
UL or lot No.	Section	Township	Range	Lot Idn	Feet from the	North/South line	Feet from the	East/West line	County
<b>A</b>	<b>31</b>	<b>19-S</b>	<b>35-E</b>		<b>200</b>	<b>NORTH</b>	<b>330</b>	<b>EAST</b>	<b>LEA</b>

Dedicated Acres <b>11.60</b>	Joint or Infill	Consolidation Code	Order No.
---------------------------------	-----------------	--------------------	-----------

NO ALLOWABLE WILL BE ASSIGNED TO THIS COMPLETION UNTIL ALL INTERESTS HAVE BEEN CONSOLIDATED OR A NON-STANDARD UNIT HAS BEEN APPROVED BY THE DIVISION

<p><b>NAD 27</b> BOTTOM HOLE LOCATION Y= 591570.3 N X= 760054.1 E  LAT.=32.623489° N LONG.=103.488682° W</p>	<p><b>NAD 83</b> BOTTOM HOLE LOCATION Y= 591633.6 N X= 801234.8 E  LAT.=32.623913° N LONG.=103.489172° W</p>	<p><b>OPERATOR CERTIFICATION</b> I hereby certify that the information herein is true and complete to the best of my knowledge and belief, and that this organization either owns a working interest or unleased mineral interest in the land including the proposed bottom hole location or has a right to drill this well at this location pursuant to a contract with an owner of such mineral or working interest, or to a voluntary pooling agreement or a compulsory pooling order heretofore entered by the division.</p> <p><i>Stephanie Rabadue</i> 9/10/14 Signature Date <i>Stephanie Rabadue</i> Printed Name <i>Stephanie.rabadue@xtoenergy.com</i> E-mail Address</p>
<p><b>CORNER COORDINATES TABLE</b> <b>NAD 27 NME</b> A - Y= 586456.1 N, X= 759110.7 E B - Y= 586468.3 N, X= 760433.1 E C - Y= 591772.5 N, X= 760382.1 E D - Y= 591763.6 N, X= 759062.1 E</p>	<p><b>CORNER COORDINATES TABLE</b> <b>NAD 83 NME</b> A - Y= 586519.2 N, X= 800291.6 E B - Y= 586531.4 N, X= 801614.0 E C - Y= 591835.8 N, X= 801562.8 E D - Y= 591826.8 N, X= 800242.7 E</p>	<p><b>SURVEYOR CERTIFICATION</b> I hereby certify that the well location shown on this plat was plotted from field notes of actual surveys made by me or under my supervision, and that the same is true and correct to the best of my belief.</p> <p><b>AUGUST 28, 2014</b> Date of Survey Signature &amp; Seal of Professional Surveyor:  Certificate Number Gary C. Eidson 12641 Ronald J. Eidson 3239 LSL</p>
<p><b>GEODETIC COORDINATES</b> <b>NAD 27 NME</b>  SURFACE LOCATION Y= 586631.9 N X= 759731.6 E  LAT.=32.609923° N LONG.=103.489857° W</p>	<p><b>GEODETIC COORDINATES</b> <b>NAD 83 NME</b>  SURFACE LOCATION Y= 586695.0 N X= 800912.5 E  LAT.=32.610047° N LONG.=103.490346° W</p>	<p><b>Diagram</b> A B 170' 700' GRID AZ.=03°44'01" HORIZ. DIST.=4950.1' B.H. 200' 330'</p>

SEP 19 2014

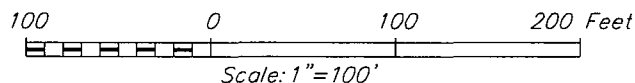


NOTE:  
1) SEE "LOCATION VERIFICATION MAP"  
FOR PROPOSED ROAD LOCATION.

— ARCHEOLOGICAL SURVEY BOUNDARY

#### DIRECTIONS TO PERLA VERDE 31 STATE #4H:

FROM THE INTERSECTION OF U.S. HWY. 62-180 AND MARATHON ROAD, GO SOUTH ON MARATHON ROAD FOR APPROX. 1.95 MILES. TURN LEFT AND GO EAST APPROX. 0.9 MILES. TURN LEFT AND GO NORTH APPROX. 0.25 MILES. TO PROPOSED STAKED ROAD. FOLLOW STAKED ROAD EAST 2898', THEN SOUTH 239', THEN SOUTHWEST 33' TO THE LOCATION



## XTO ENERGY

**PERLA VERDE 31 STATE #4H WELL  
LOCATED 170 FEET FROM THE SOUTH LINE  
AND 700 FEET FROM THE EAST LINE OF SECTION 31,  
TOWNSHIP 19 SOUTH, RANGE 35 EAST, N.M.P.M.,  
LEA COUNTY, NEW MEXICO**

PROVIDING SURVEYING SERVICES  
SINCE 1946

**JOHN WEST SURVEYING COMPANY**

412 N. DAL PASO HOBBS, N.M. 88240  
(575) 393-3117 www.jwsc.biz  
TBPLS# 10021000

Survey Date: 8/28/14

CAD Date: 9/9/14

Drawn By: LSL

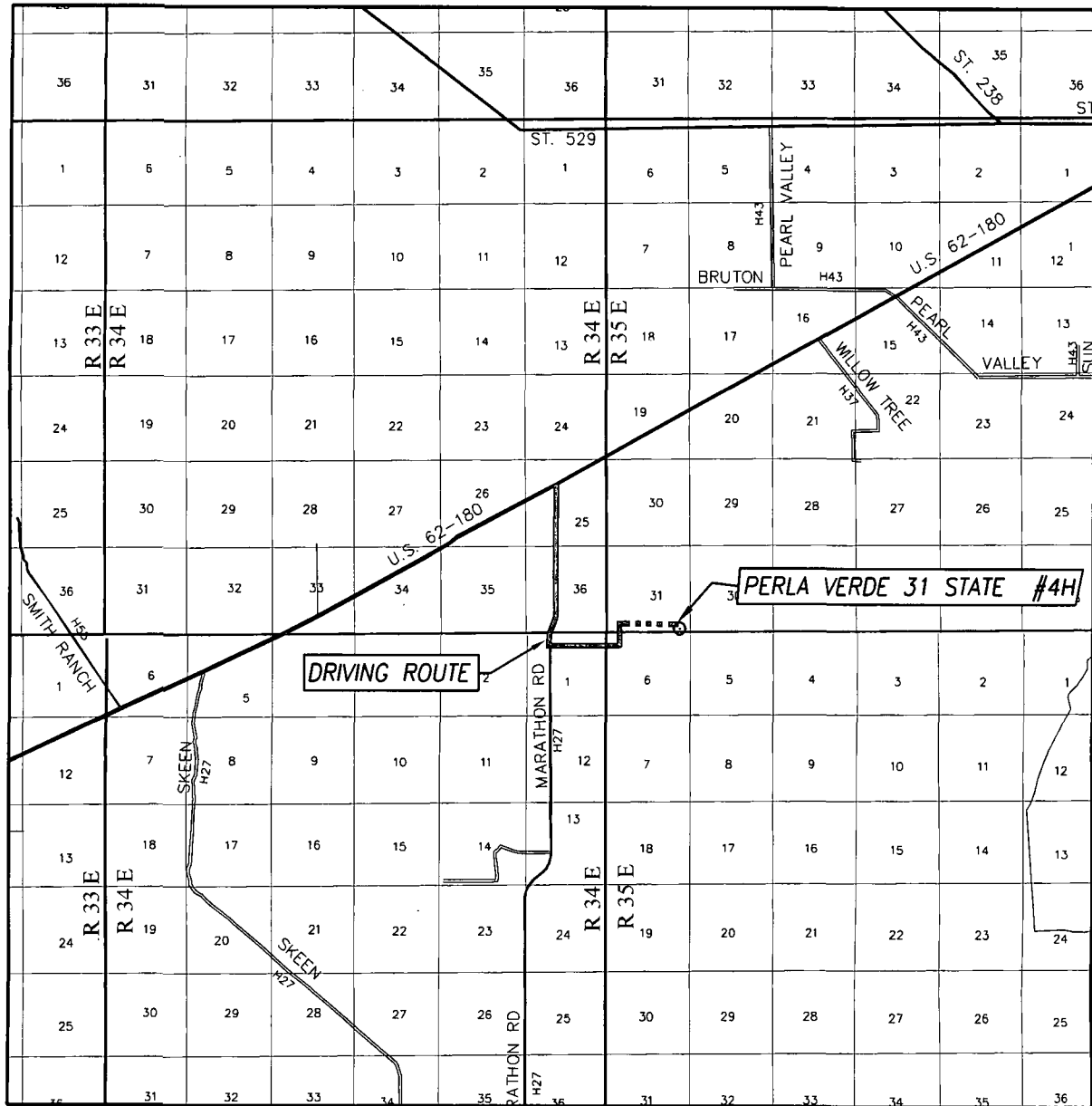
W.O. No.: 14110929

Rev: .

Rel. W.O.:


Sheet 1 of 1

# VICINITY MAP



SCALE: 1" = 2 MILES  
DRIVING ROUTE: SEE LOCATION VERIFICATION MAP

SEC. 31 TWP. 19-S RGE. 35-E  
SURVEY \_\_\_\_\_ N.M.P.M. \_\_\_\_\_  
COUNTY LEA STATE NEW MEXICO  
DESCRIPTION 170' FSL & 700 FEL  
ELEVATION 3699'  
OPERATOR XTO ENERGY  
LEASE PERLA VERDE 31 STATE

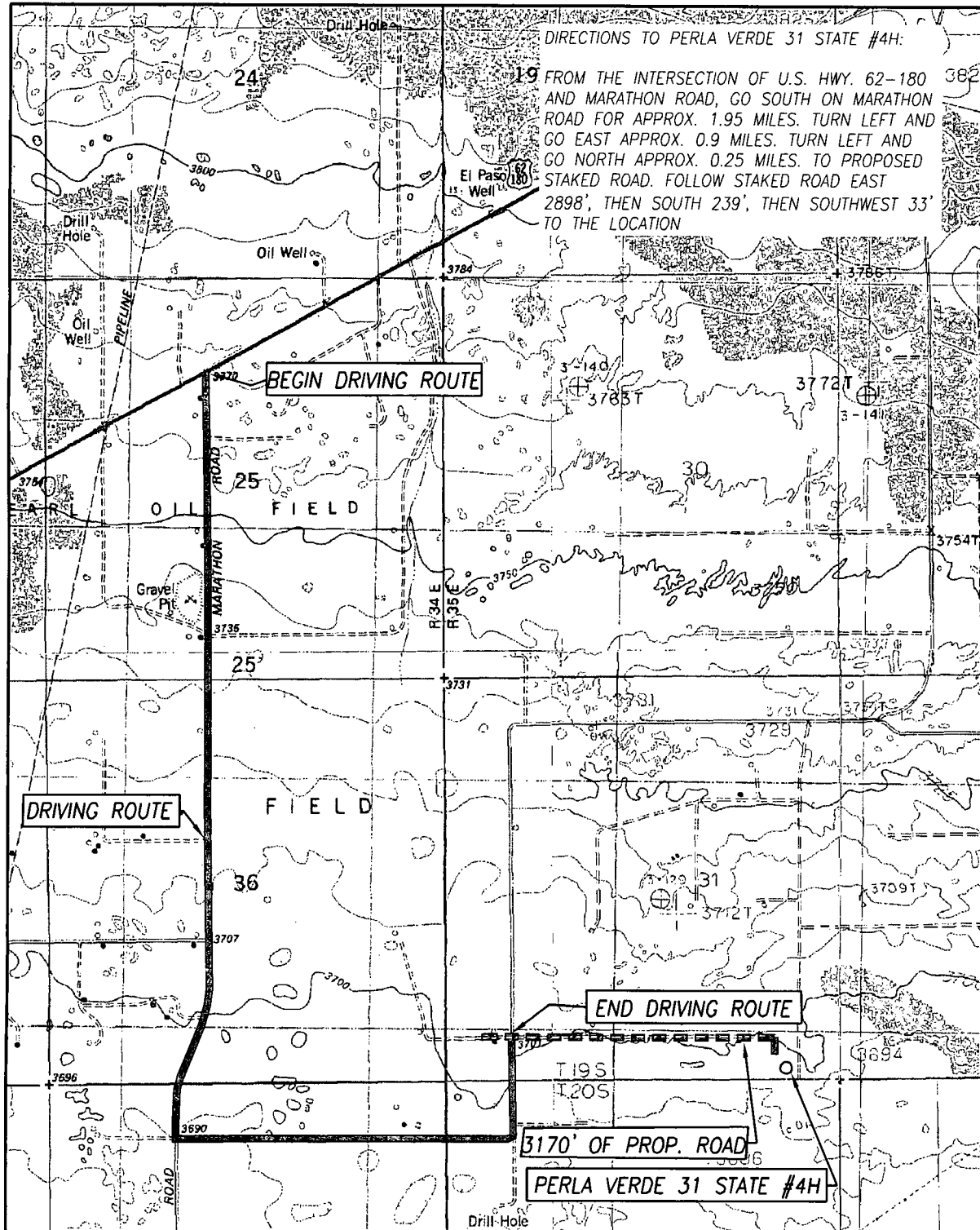


PROVIDING SURVEYING SERVICES  
SINCE 1946

**JOHN WEST SURVEYING COMPANY**

412 N. DAL PASO HOBBS, N.M. 88240  
(575) 393-3117 [www.jwsc.biz](http://www.jwsc.biz)  
TBPLS# 10021000

# LOCATION VERIFICATION MAP



SEC. 31 TWP. 19-S RGE. 35-E  
 COUNTY LEA STATE NEW MEXICO  
 DESCRIPTION 170' FSL & 700' FEL  
 ELEVATION 3699'  
 OPERATOR XTO ENERGY  
 LEASE PERLA VERDE 31 STATE  
 U.S.G.S. TOPOGRAPHIC MAP  
 LEA, N.M.

SCALE: 1" = 2000'  
 IRONHOUSE DRAW, N.M. - 10'  
 IRONHOUSE WELL, N.M. - 10' MONUMENT SW, N.M. - 10'

CONTOUR INTERVAL:  
 LEA, N.M. - 10'

PROVIDING SURVEYING SERVICES  
 SINCE 1946  
**JOHN WEST SURVEYING COMPANY**  
 412 N. DAL PASO HOBBS, N.M. 88240  
 (575) 393-3117 www.jwsc.biz  
 TBPLS# 10021000