

DISTRICT I
1625 N. French Dr., Hobbs, NM 88240
Phone (575) 393-6161 Fax: (575) 393-0720

DISTRICT II
811 S. First St., Artesia, NM 88210
Phone (575) 746-1283 Fax: (575) 746-9720

DISTRICT III
1000 Rio Brazos Rd., Aztec, NM 87410
Phone (505) 334-6178 Fax: (505) 334-6170

DISTRICT IV
1220 S. St. Francis Dr., Santa Fe, NM 87505
Phone (505) 476-3460 Fax: (505) 476-3462

State of New Mexico
Energy, Minerals and Natural Resources Department

Form C-102
Revised August 1, 2011
HOBBS OCD
Submit one copy to appropriate
District Office

OIL CONSERVATION DIVISION
1220 South St. Francis Dr.
Santa Fe, New Mexico 87505

SEP 29 2014

WELL LOCATION AND ACREAGE DEDICATION PLAT

RECEIVED AMENDED REPORT

API Number 30-025-	Pool Code 6660	Pool Name Blincbry O & G (oil)
Property Code 24428	Property Name LOCKHART B12	Well Number 14
GRID No. 873	Operator Name APACHE CORPORATION	Elevation 3508

Surface Location

UL or lot No.	Section	Township	Range	Lot Idn	Feet from the	North/South line	Feet from the	East/West line	County
B	12	21 S	37 E		660	NORTH	1905	EAST	LEA

Bottom Hole Location If Different From Surface

UL or lot No.	Section	Township	Range	Lot Idn	Feet from the	North/South line	Feet from the	East/West line	County
Dedicated Acres 40	Joint or Infill	Consolidation Code	Order No.						

NO ALLOWABLE WILL BE ASSIGNED TO THIS COMPLETION UNTIL ALL INTERESTS HAVE BEEN CONSOLIDATED
OR A NON-STANDARD UNIT HAS BEEN APPROVED BY THE DIVISION

N 548012.24 E 913795.56 (NAD-83)	N 548043.12 E 916435.81 (NAD-83)	<div style="border: 1px solid black; padding: 5px; text-align: center;"><p>660'</p><p>1905'</p><p>SURFACE LOCATION Lat - N 32°29'56.16" Long - W 103°06'51.42" NMSPCE- N 547391.54 E 917179.79 (NAD-83)</p><p>Lat - N 32°29'55.74" Long - W 103°06'49.73" NMSPCE- N 547332.31 E 875995.89 (NAD-27)</p></div>	N 548072.93 E 919077.06 (NAD-83)
			N 545434.05 E 919106.89 (NAD-83)
N 542704.08 E 913856.11 (NAD-83)			N 542793.63 E 919136.34 (NAD-83)

OPERATOR CERTIFICATION

I hereby certify that the information contained herein is true and complete to the best of my knowledge and belief, and that this organization either owns a working interest or unleased mineral interest in the land including the proposed bottom hole location or has a right to drill this well at this location pursuant to a contract with an owner of such a mineral or working interest, or to a voluntary pooling agreement or a compulsory pooling order heretofore entered by the division.

Sorina L. Flores 8/14/13
Signature Date

Sorina L. Flores
Printed Name

Sorina.Flores@apachecorp.com
Email Address

SURVEYOR CERTIFICATION

I hereby certify that the well location shown on this plat was plotted from field notes of actual surveys made by me or under my supervision, and that the same is true and correct to the best of my belief.

NOVEMBER 2012
Date Surveyed

NEW MEXICO
7977
Professional Surveyor

Certificate No. Gary L. Jones 7977

BASIN SURVEYS 27579

SEP 30 2014

DISTRICT I
1625 N. French Dr., Hobbs, NM 88240
Phone (575) 393-6161 Fax: (575) 393-0720

DISTRICT II
811 S. First St., Artesia, NM 88210
Phone (575) 748-1283 Fax: (575) 748-9720

DISTRICT III
1000 Rio Brazos Rd., Aztec, NM 87410
Phone (505) 334-6178 Fax: (505) 334-6170

DISTRICT IV
1220 S. St. Francis Dr., Santa Fe, NM 87505
Phone (505) 478-3460 Fax: (505) 478-3462

State of New Mexico
Energy, Minerals and Natural Resources Department

Form C-102
Revised August 1, 2011

Submit one copy to appropriate
District Office

OIL CONSERVATION DIVISION
1220 South St. Francis Dr.
Santa Fe, New Mexico 87505

WELL LOCATION AND ACREAGE DEDICATION PLAT

☐ AMENDED REPORT

API Number 30-025-	Pool Code 19190	Pool Name Drinkard
Property Code 24428	Property Name LOCKHART B12	Well Number 14
OGRID No. 873	Operator Name APACHE CORPORATION	Elevation 3508

Surface Location

UL or lot No. B	Section 12	Township 21 S	Range 37 E	Lot Idn	Feet from the 660	North/South line NORTH	Feet from the 1905	East/West line EAST	County LEA
---------------------------	----------------------	-------------------------	----------------------	---------	-----------------------------	----------------------------------	------------------------------	-------------------------------	----------------------

Bottom Hole Location If Different From Surface

UL or lot No.	Section	Township	Range	Lot Idn	Feet from the	North/South line	Feet from the	East/West line	County
Dedicated Acres 40	Joint or Infill	Consolidation Code	Order No.						

NO ALLOWABLE WILL BE ASSIGNED TO THIS COMPLETION UNTIL ALL INTERESTS HAVE BEEN CONSOLIDATED
OR A NON-STANDARD UNIT HAS BEEN APPROVED BY THE DIVISION

N 548012.24 E 913795.56 (NAD-83)	N 548043.12 E 916435.81 (NAD-83)	<div><p>1905'</p><p>SURFACE LOCATION Lat - N 32°29'56.16" Long - W 103°06'51.42" NMSPCE- N 547391.54 E 917179.79 (NAD-83)</p><p>Lat - N 32°29'55.74" Long - W 103°06'49.73" NMSPCE- N 547332.31 E 875995.89 (NAD-27)</p></div>	N 548072.93 E 919077.06 (NAD-83)	<p>OPERATOR CERTIFICATION</p> <p>I hereby certify that the information contained herein is true and complete to the best of my knowledge and belief, and that this organization either owns a working interest or unleased mineral interest in the land including the proposed bottom hole location or has a right to drill this well at this location pursuant to a contract with an owner of such a mineral or working interest, or to a voluntary pooling agreement or a compulsory pooling order heretofore entered by the division.</p> <p><i>Sorina L. Flores</i> 8/14/13 Signature Date</p> <p>Sorina L. Flores Printed Name</p> <p><i>Sorina.Flores@apachecorp.com</i> Email Address</p>
			N 545434.05 E 919106.89 (NAD-83)	<p>SURVEYOR CERTIFICATION</p> <p>I hereby certify that the well location shown on this plat was plotted from field notes of actual surveys made by me or under my supervision, and that the same is true and correct to the best of my belief.</p> <p>NOVEMBER 14 2012 Date Surveyed</p> <p><i>[Signature]</i> Signature & Seal of Professional Surveyor</p> <p>7977 No. 27579 Certificate No. Gary L. Jones</p>
N 542704.08 E 913856.11 (NAD-83)			N 542793.63 E 919136.34 (NAD-83)	<p>BASIN SURVEYS 27579</p>

DISTRICT I

1625 N. French Dr., Hobbs, NM 88240
Phone (575) 393-6161 Fax: (575) 393-0720

DISTRICT II

811 S. First St., Artesia, NM 88210
Phone (575) 748-1283 Fax: (575) 748-9720

DISTRICT III

1000 Rio Brazos Rd., Aztec, NM 87410
Phone (505) 334-6178 Fax: (505) 334-6170

DISTRICT IV

1220 S. St. Francis Dr., Santa Fe, NM 87505
Phone (505) 476-3460 Fax: (505) 476-3462

State of New Mexico
Energy, Minerals and Natural Resources Department

Form C-102
Revised August 1, 2011

Submit one copy to appropriate
District Office

OIL CONSERVATION DIVISION

1220 South St. Francis Dr.
Santa Fe, New Mexico 87505

WELL LOCATION AND ACREAGE DEDICATION PLAT

☐ AMENDED REPORT

API Number 30-025-	Pool Code 60240	Pool Name Tubb D & G (oil)
Property Code 24428	Property Name LOCKHART B12	Well Number 14
GRID No. 873	Operator Name APACHE CORPORATION	Elevation 3508

Surface Location

UL or lot No.	Section	Township	Range	Lot Idn	Feet from the	North/South line	Feet from the	East/West line	County
B	12	21 S	37 E		660	NORTH	1905	EAST	LEA

Bottom Hole Location If Different From Surface

UL or lot No.	Section	Township	Range	Lot Idn	Feet from the	North/South line	Feet from the	East/West line	County

Dedicated Acres 40	Joint or Infill	Consolidation Code	Order No.
------------------------------	-----------------	--------------------	-----------

NO ALLOWABLE WILL BE ASSIGNED TO THIS COMPLETION UNTIL ALL INTERESTS HAVE BEEN CONSOLIDATED
OR A NON-STANDARD UNIT HAS BEEN APPROVED BY THE DIVISION

N 548012.24 E 913795.56 (NAD-83)	N 548043.12 E 916435.81 (NAD-83)	<p>SURFACE LOCATION Lat - N 32°29'56.16" Long - W 103°06'51.42" NMSPEC- N 547391.54 E 917179.79 (NAD-83)</p>	N 548072.93 E 919077.06 (NAD-83)	OPERATOR CERTIFICATION I hereby certify that the information contained herein is true and complete to the best of my knowledge and belief, and that this organization either owns a working interest or unleased mineral interest in the land including the proposed bottom hole location or has a right to drill this well at this location pursuant to a contract with an owner of such a mineral or working interest, or to a voluntary pooling agreement or a compulsory pooling order heretofore entered by the division. <u>Sorina L. Flores</u> 8/14/13 Signature Date <u>Sorina L. Flores</u> Printed Name <u>Sorina.L.Flores@apachecorp.com</u> Email Address
		Lat - N 32°29'55.74" Long - W 103°06'49.73" NMSPEC- N 547332.31 E 875995.89 (NAD-27)		
			N 545434.05 E 919106.89 (NAD-83)	SURVEYOR CERTIFICATION I hereby certify that the well location shown on this plat was plotted from field notes of actual surveys made by me or under my supervision, and that the same is true and correct to the best of my belief. Date Surveyed NOVEMBER 02 2012 Signature & Seal of Professional Surveyor Certificate No. Gary L. Jones 7977 BASIN SURVEYS 27579
N 542704.08 E 913856.11 (NAD-83)			N 542793.63 E 919136.34 (NAD-83)	

DISTRICT I

1625 N. French Dr., Hobbs, NM 88240
Phone (575) 393-6181 Fax: (575) 393-0720

DISTRICT II

811 S. First St., Artesia, NM 88210
Phone (575) 748-1283 Fax: (575) 748-9720

DISTRICT III

1000 Rio Brazos Rd., Aztec, NM 87410
Phone (505) 334-6178 Fax: (505) 334-6170

DISTRICT IV

1220 S. St. Francis Dr., Santa Fe, NM 87505
Phone (505) 476-3460 Fax: (505) 476-3462

State of New Mexico
Energy, Minerals and Natural Resources Department

OIL CONSERVATION DIVISION

1220 South St. Francis Dr.
Santa Fe, New Mexico 87505

Form C-102

Revised August 1, 2011

Submit one copy to appropriate
District Office

WELL LOCATION AND ACREAGE DEDICATION PLAT

☐ AMENDED REPORT

API Number 30-025-	Pool Code 62700	Pool Name Wantz; ABD
Property Code 24428	Property Name LOCKHART B12	Well Number 14
OGRID No. 873	Operator Name APACHE CORPORATION	Elevation 3508

Surface Location

UL or lot No.	Section	Township	Range	Lot Idn	Feet from the	North/South line	Feet from the	East/West line	County
B	12	21 S	37 E		660	NORTH	1905	EAST	LEA

Bottom Hole Location If Different From Surface

UL or lot No.	Section	Township	Range	Lot Idn	Feet from the	North/South line	Feet from the	East/West line	County
Dedicated Acres 40	Joint or Infill	Consolidation Code	Order No.						

NO ALLOWABLE WILL BE ASSIGNED TO THIS COMPLETION UNTIL ALL INTERESTS HAVE BEEN CONSOLIDATED
OR A NON-STANDARD UNIT HAS BEEN APPROVED BY THE DIVISION

N 548012.24 E 913795.56 (NAD-83)	N 548043.12 E 916435.81 (NAD-83)		N 548072.93 E 919077.06 (NAD-83)	OPERATOR CERTIFICATION I hereby certify that the information contained herein is true and complete to the best of my knowledge and belief, and that this organization either owns a working interest or unleased mineral interest in the land including the proposed bottom hole location or has a right to drill this well at this location pursuant to a contract with an owner of such a mineral or working interest, or to a voluntary pooling agreement or a compulsory pooling order heretofore entered by the division. <u>Sorina L. Flores</u> 8/14/13 Signature Date <u>Sorina L. Flores</u> Printed Name <u>Sorina.L.Flores@apachecorp.com</u> Email Address
			N 545434.05 E 919106.89 (NAD-83)	SURVEYOR CERTIFICATION I hereby certify that the well location shown on this plat was plotted from field notes of actual surveys made by me or under my supervision, and that the same is true and correct to the best of my belief. NOVEMBER 2012 Date Surveyed Signature & Seal of Professional Surveyor
N 542704.08 E 913856.11 (NAD-83)			N 542793.63 E 919136.34 (NAD-83)	Certificate No. Gary L. Jones 7977 BASIN SURVEYS 27579

**Boone Arch Services of NM, LLC
506 E. Chapman Road
Carlsbad, NM 88220**



May 19, 2014

Apache Corporation
2000 Post Oak Blvd, Ste. 100
Houston, TX 77056
Attn: Harold Swain

Re: Lockhart B12 #14 FLOWline

Dear Mr. Swain,

A records search was conducted on May 15, 2014 at the Bureau of Land Management Carlsbad Field Office for a flowline which lies in T21S R37E Section 12. During the records search it was noted that the proposed project lies entirely within the boundaries of previous surveys, NMCRIS #'s 7766, 8931, 9062, 9522, 121727, 128808, 128810, and 128811. In consultation with BLM archaeologist Stacy Galassini on May 15, 2014, it was determined that no further survey is required. Apache Corporation's project is recommended for approval as currently staked without further archaeological survey.

Legal Description: (NE ¼ NW ¼) (SE ¼ NW ¼) (NW ¼ NE ¼) (SW ¼ NE ¼) of Section 12, T21S R37E in Lea County, New Mexico

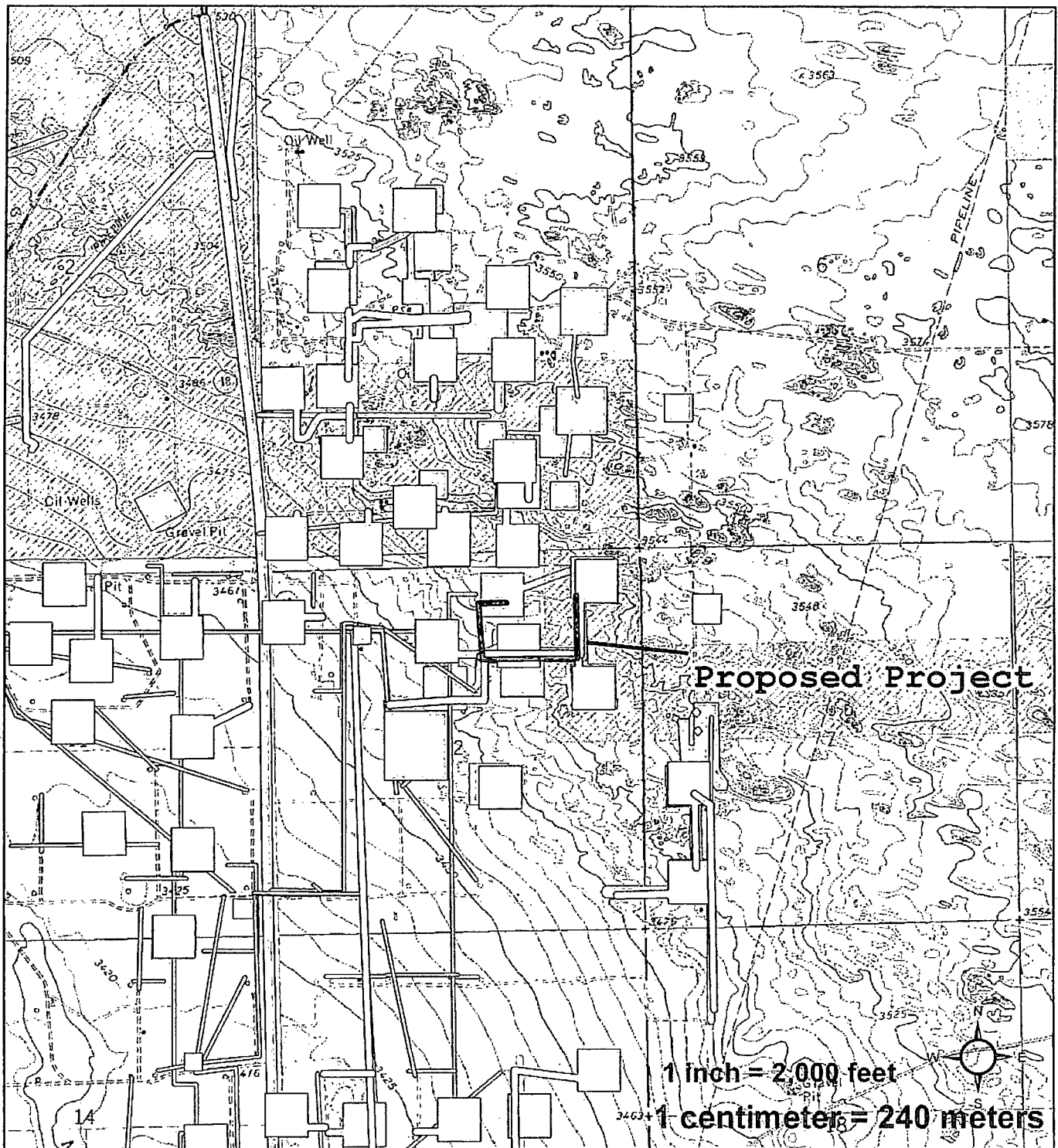
Map Reference: U.S.G.S. 7.5' Quadrangle Map Eunice NE 32102-D1

Sincerely,

Rebecca Hill
Owner/Principal Investigator
Boone Arch Services of NM, LLC

Encl: (1) project map
(2) NMCRIS Map

Apache Corporation Lockhart B12 #14 Flowline



Legend

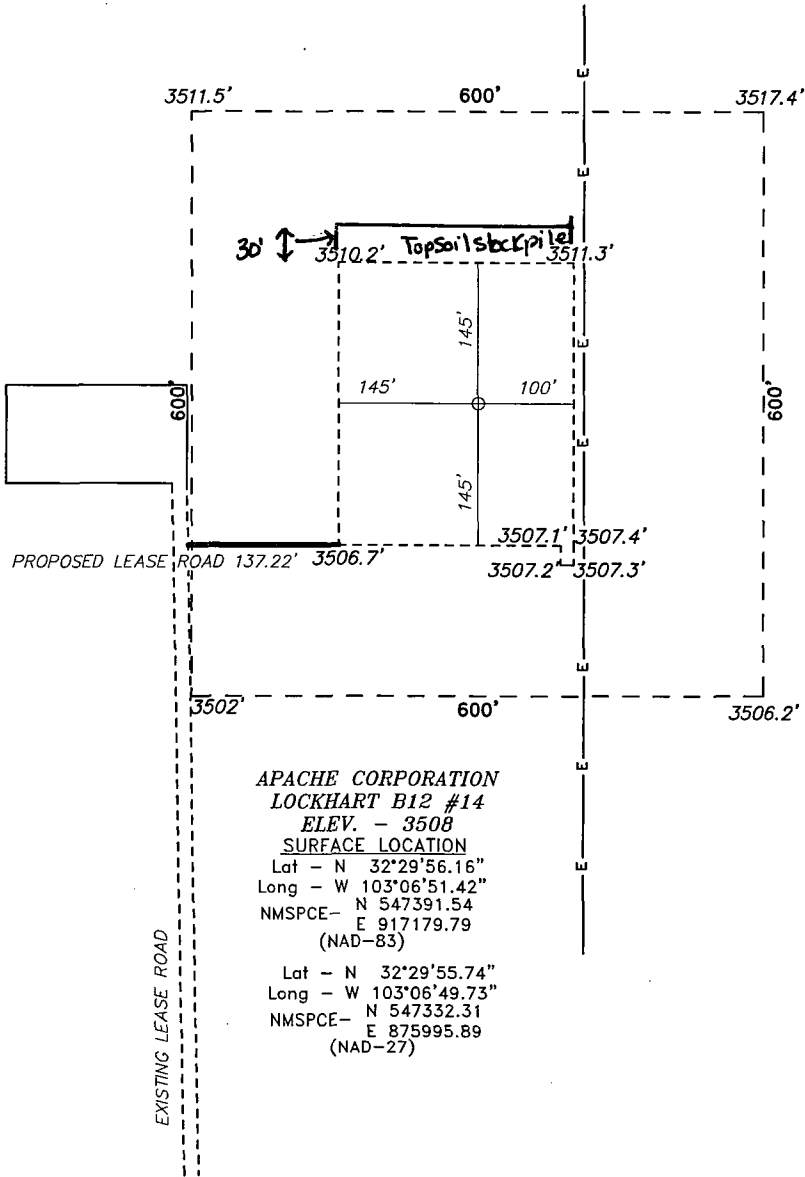
Lockhart_B12_#14_Flowline	BOR	NPS
Daily_Surveyed_Space_0113	DOE	Private
Historic_Surveyed_Space_0113	Forest Service	NM State Trust Lands
BLM	BOI	NM State Game & Fish
		NM State Park

Eunice NE 32102-D1
T21S R37E S12

1:24,000

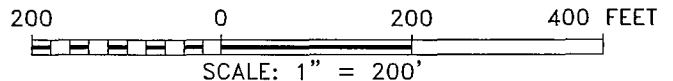
BASNM 05-14-45

SECTION 12, TOWNSHIP 21 SOUTH, RANGE 37 EAST, N.M.P.M.,
LEA COUNTY, NEW MEXICO.



APACHE CORPORATION
LOCKHART B12 #14
ELEV. - 3508
SURFACE LOCATION
Lat - N 32°29'56.16"
Long - W 103°06'51.42"
NMSPCE- N 547391.54
 E 917179.79
 (NAD-83)

Lat - N 32°29'55.74"
Long - W 103°06'49.73"
NMSPCE- N 547332.31
 E 875995.89
 (NAD-27)



APACHE CORPORATION

REF: LOCKHART B12 #14 / WELL PAD TOPO

THE LOCKHART B12 #14 LOCATED 660'

FROM THE NORTH LINE AND 1905' FROM THE EAST LINE OF
SECTION 12, TOWNSHIP 21 SOUTH, RANGE 37 EAST,
N.M.P.M., LEA COUNTY, NEW MEXICO.

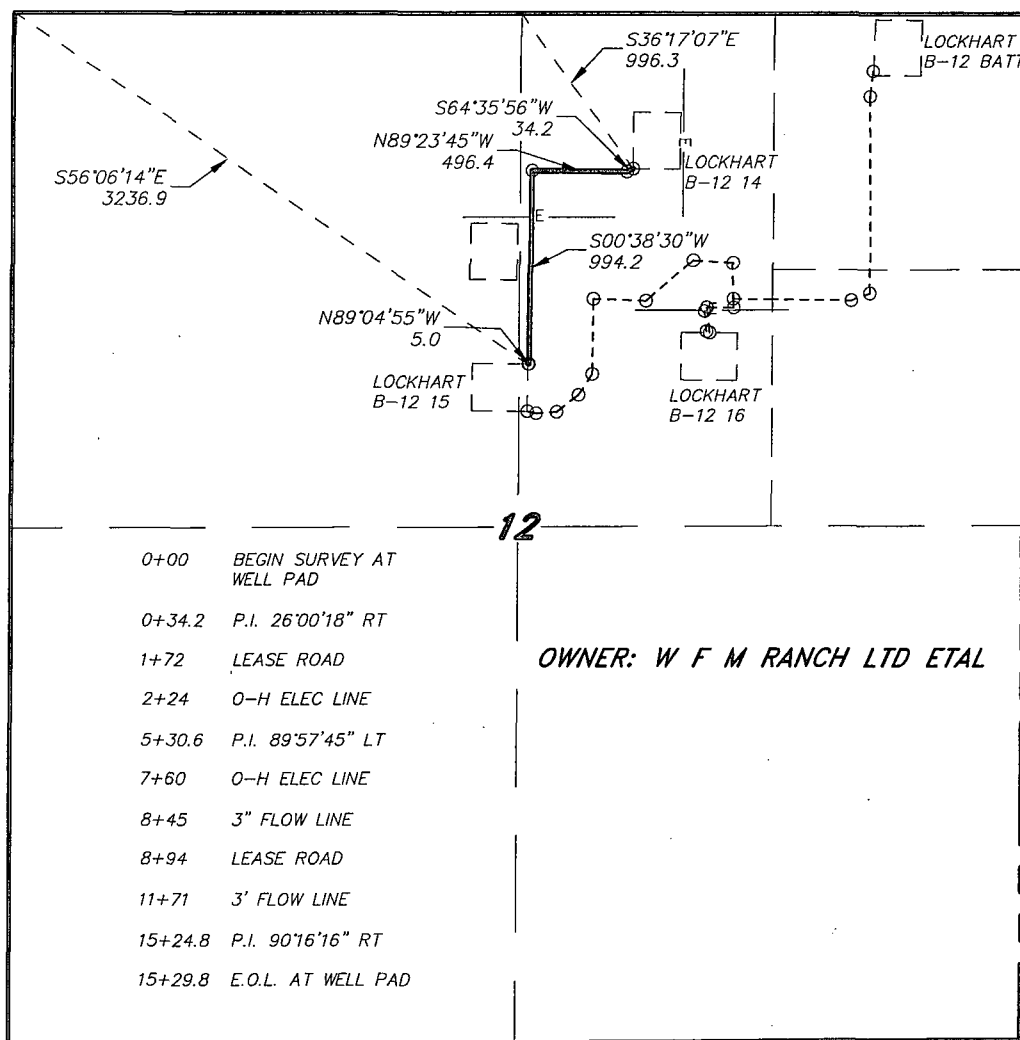
BASIN SURVEYS P.O. BOX 1786 -HOBBS, NEW MEXICO

W.O. Number: 27579	Drawn By: D. JONES
--------------------	--------------------

Date: 11-16-2012	Disk: DAJ 27579
------------------	-----------------

Survey Date: 11-12-2012	Sheet 1 of 1 Sheets
-------------------------	---------------------

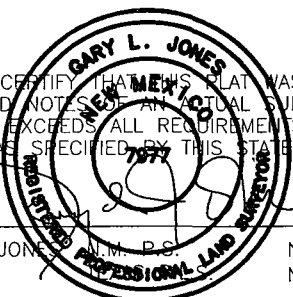
SECTION 12, TOWNSHIP 21 SOUTH, RANGE 37 EAST, N.M.P.M.,
LEA COUNTY, NEW MEXICO.



LEGAL DESCRIPTION

A STRIP OF LAND 30.0 FEET WIDE, LOCATED IN SECTION 12, TOWNSHIP 21 SOUTH, RANGE 37 EAST, N.M.P.M., LEA COUNTY, NEW MEXICO AND BEING 15.0 FEET LEFT AND RIGHT OF THE FOLLOWING DESCRIBED CENTERLINE SURVEY. BEGINNING AT A POINT WHICH LIES S.36°17'07\"E., 996.3 FEET FROM THE NORTH QUARTER CORNER OF SAID SECTION 12; THENCE S.64°35'56\"W., 34.2 FEET; THENCE N.89°23'45\"W., 496.4 FEET; THENCE S.00°38'30\"W., 994.2 FEET; THENCE N.89°04'55\"W., 5.0 FEET TO THE END OF THIS LINE WHICH LIES S.56°06'14\"E., 3236.9 FEET FROM THE NORTHWEST CORNER OF SAID SECTION 12. SAID STRIP OF LAND BEING 1529.8 FEET OR 92.71 RODS IN LENGTH.

I HEREBY CERTIFY THAT THIS PLAT WAS PREPARED FROM FIELD NOTES OF AN ACTUAL SURVEY AND MEETS OR EXCEEDS ALL REQUIREMENTS FOR LAND SURVEYS AS SPECIFIED BY THIS STATE.



basin surveys
focused on excellence
in the oilfield

GARY L. JONES, N.M. P.S. No. 7977
P.O. Box 1786 (575) 393-7316 - Office
1120 N. West County Rd. (575) 392-2206 - Fax
Hobbs, New Mexico 88241 basinsurveys.com

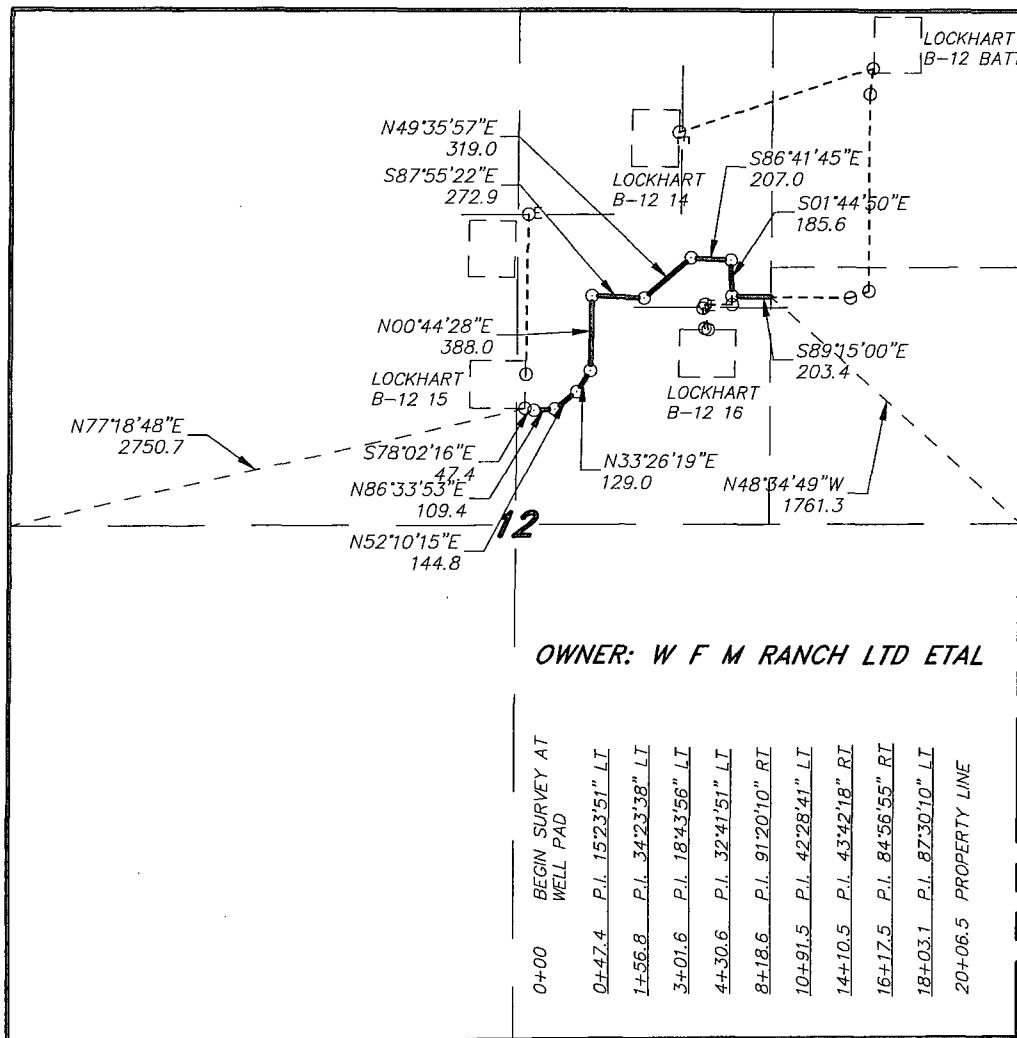
1000 0 1000 2000 FEET

Apache
EXPLORING WHAT'S POSSIBLE

REF: PROPOSED FLOWLINE TO LOCKHART B 12 14

A PIPELINE CROSSING FEE LAND IN
SECTION 12, TOWNSHIP 21 SOUTH, RANGE 37 EAST,
N.M.P.M., LEA COUNTY, NEW MEXICO.

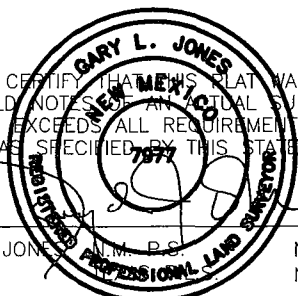
SECTION 12, TOWNSHIP 21 SOUTH, RANGE 37 EAST, N.M.P.M.,
LEA COUNTY, NEW MEXICO.



LEGAL DESCRIPTION

A STRIP OF LAND 30.0 FEET WIDE, LOCATED IN SECTION 12, TOWNSHIP 21 SOUTH, RANGE 37 EAST, N.M.P.M., LEA COUNTY, NEW MEXICO AND BEING 15.0 FEET LEFT AND RIGHT OF THE FOLLOWING DESCRIBED CENTERLINE SURVEY. BEGINNING AT A POINT WHICH LIES N.77°18'48"E., 2750.7 FEET FROM THE WEST QUARTER CORNER OF SAID SECTION 12; THENCE S.78°02'16"E., 47.4 FEET; THENCE N.86°33'53"E., 109.4 FEET; THENCE N.52°10'15"E., 144.8 FEET; THENCE N.33°26'19"E., 129.0 FEET; THENCE N.00°44'28"E., 388.0 FEET; THENCE S.87°55'22"E., 272.9 FEET; THENCE N.49°35'57"E., 319.0 FEET; THENCE S.86°41'45"E., 207.0 FEET; THENCE S.01°44'50"E., 185.6 FEET; THENCE S.89°15'00"E., 203.4 FEET TO A POINT ON THE EAST PROPERTY LINE WHICH LIES N.48°34'49"W., 1761.3 FEET FROM THE EAST QUARTER CORNER OF SAID SECTION 12. SAID STRIP OF LAND BEING 2006.5 FEET OR 121.61 RODS IN LENGTH.

I HEREBY CERTIFY THAT THIS PLAT WAS PREPARED FROM FIELD NOTES OF AN ACTUAL SURVEY AND MEETS OR EXCEEDS ALL REQUIREMENTS FOR LAND SURVEYS AS SPECIFIED BY THIS STATE.



basin surveys
focused on excellence
in the oilfield

GARY L. JONES, N.M.P.S.
No. 7977
No. 5074

P.O. Box 1786
1120 N. West County Rd.
Hobbs, New Mexico 88241
(575) 393-7316 - Office
(575) 392-2206 - Fax
basinsurveys.com

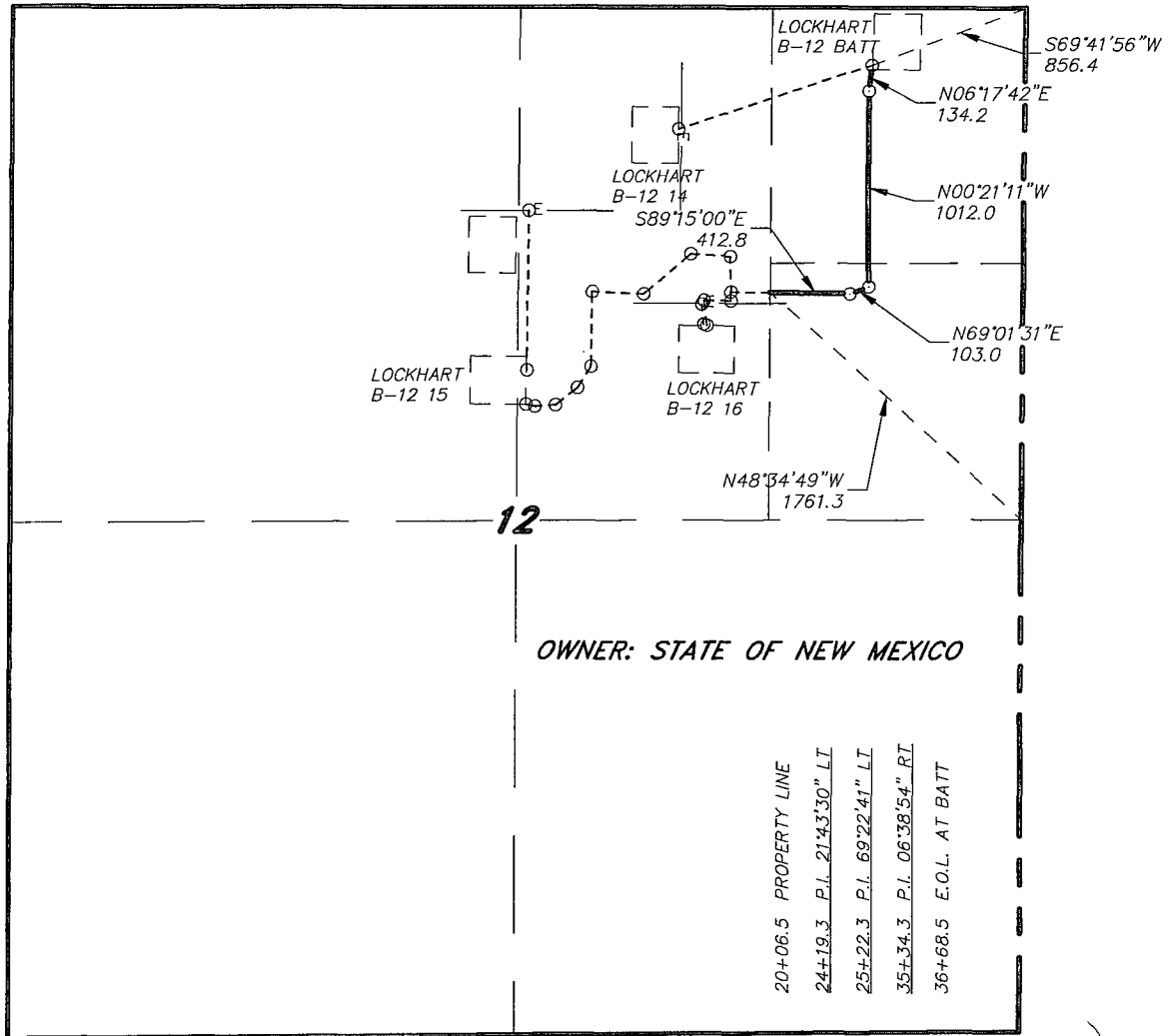
1000 0 1000 2000 FEET



REF: PROPOSED FLOWLINE TO THE LOCKHART B 12 15

A PIPELINE CROSSING FEE LAND IN
SECTION 12, TOWNSHIP 21 SOUTH, RANGE 37 EAST,
N.M.P.M., LEA COUNTY, NEW MEXICO.

SECTION 12, TOWNSHIP 21 SOUTH, RANGE 37 EAST, N.M.P.M.,
LEA COUNTY, NEW MEXICO.



OWNER: STATE OF NEW MEXICO

20+06.5 PROPERTY LINE
24+19.3 P.L. 21°43'30" LT
25+22.3 P.L. 69°22'41" LT
35+34.3 P.L. 06°38'54" RT
36+68.5 E.O.L. AT BATT

LEGAL DESCRIPTION

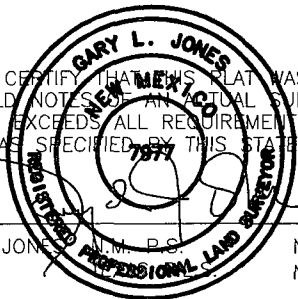
A STRIP OF LAND 30.0 FEET WIDE, LOCATED IN SECTION 12, TOWNSHIP 21 SOUTH, RANGE 37 EAST, N.M.P.M., LEA COUNTY, NEW MEXICO AND BEING 15.0 FEET LEFT AND RIGHT OF THE FOLLOWING DESCRIBED CENTERLINE SURVEY.

BEGINNING AT A POINT WHICH LIES N.48°34'49"W., 1761.3 FEET FROM THE EAST QUARTER CORNER OF SAID SECTION 12; THENCE S.89°15'00"E., 412.8 FEET; THENCE N.69°01'31"E., 103.0 FEET; THENCE N.00°21'11"W., 1012.0 FEET; THENCE N.06°17'42"E., 134.2 FEET TO THE END OF THIS LINE WHICH LIES S.69°41'56"W., 856.4 FEET FROM THE NORTHEAST CORNER OF SAID SECTION 12. SAID STRIP OF LAND BEING 1662.0 FEET OR 100.73 RODS IN LENGTH AND CONTAINING 1.14 ACRES, MORE OR LESS, AND BEING ALLOCATED BY FORTIES AS FOLLOWS:

SE/4 NE/4 = 38.61 RODS = 0.44 ACRES NE/4 NE/4 = 62.12 RODS = 0.70 ACRES

1000 0 1000 2000 FEET

I HEREBY CERTIFY THAT THIS PLAT WAS PREPARED FROM FIELD NOTES OF AN ACTUAL SURVEY AND MEETS OR EXCEEDS ALL REQUIREMENTS FOR LAND SURVEYS AS SPECIFIED BY THIS STATE.



basin surveys
focused on excellence
in the oilfield

GARY L. JONES N.M.P.S.

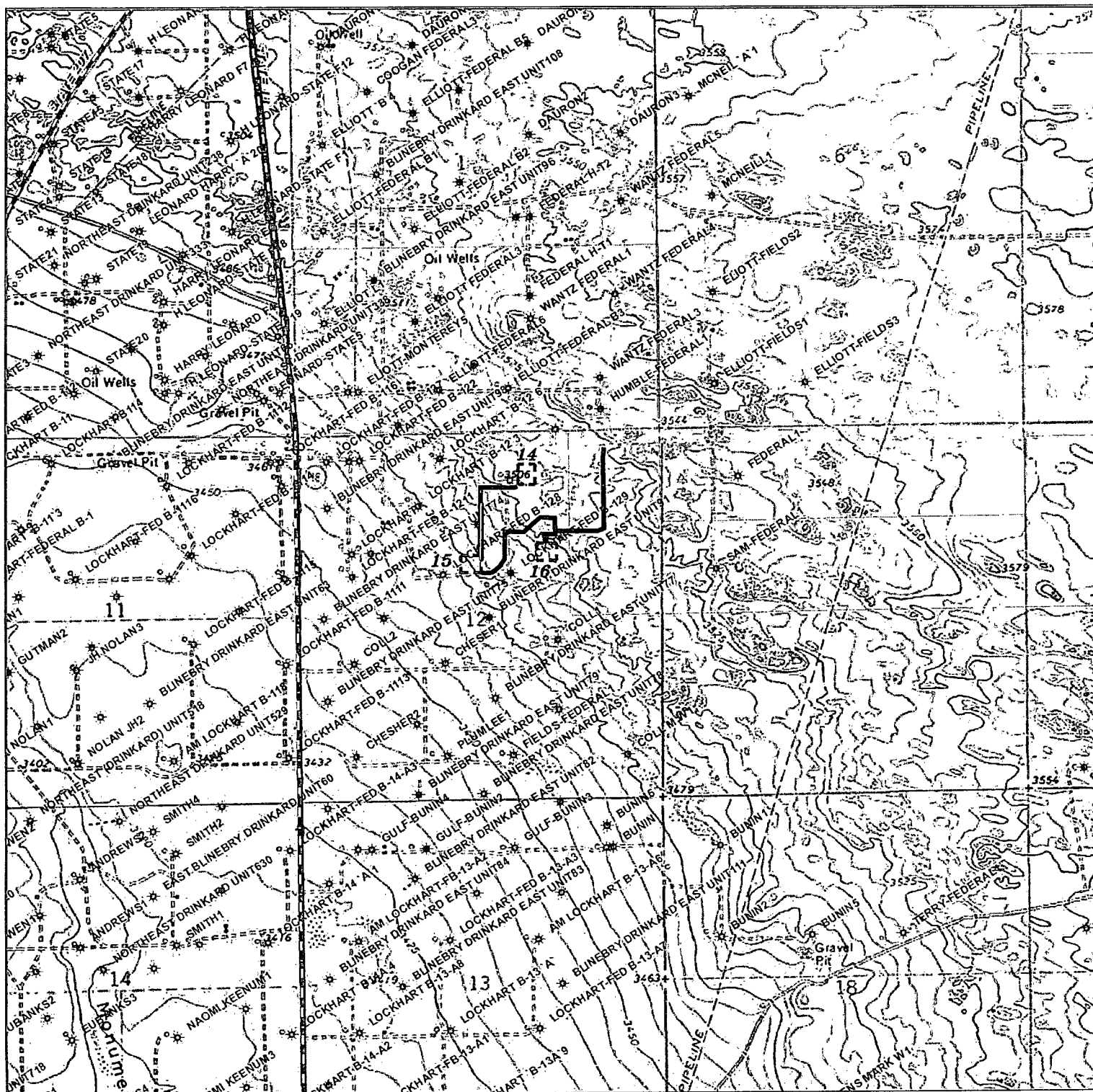
No. 7977
No. 5074

P.O. Box 1786 (575) 393-7316 - Office
1120 N. West County Rd. (575) 392-2206 - Fax
Hobbs, New Mexico 88241 basinsurveys.com

Apache
EXPLORING WHAT'S POSSIBLE

REF: PROPOSED FLOWLINE TO THE LOCKHART B 12 15

A PIPELINE CROSSING STATE LAND IN
SECTION 12, TOWNSHIP 21 SOUTH, RANGE 37 EAST,
N.M.P.M., LEA COUNTY, NEW MEXICO.



LOCKHART B 12 ELECTRIC AND FLOWLINES
 Section 12, Township 21 South, Range 37 East,
 N.M.P.M., Lea County, New Mexico.

basin
surveys
 focused on excellence
 in the oilfield

P.O. Box 1786
 1120 N. West County Rd.
 Hobbs, New Mexico 88241
 (575) 393-7316 - Office
 (575) 392-2206 - Fax
 basinsurveys.com

0' 1000' 2000' 3000' 4000'

SCALE: 1" = 2000'

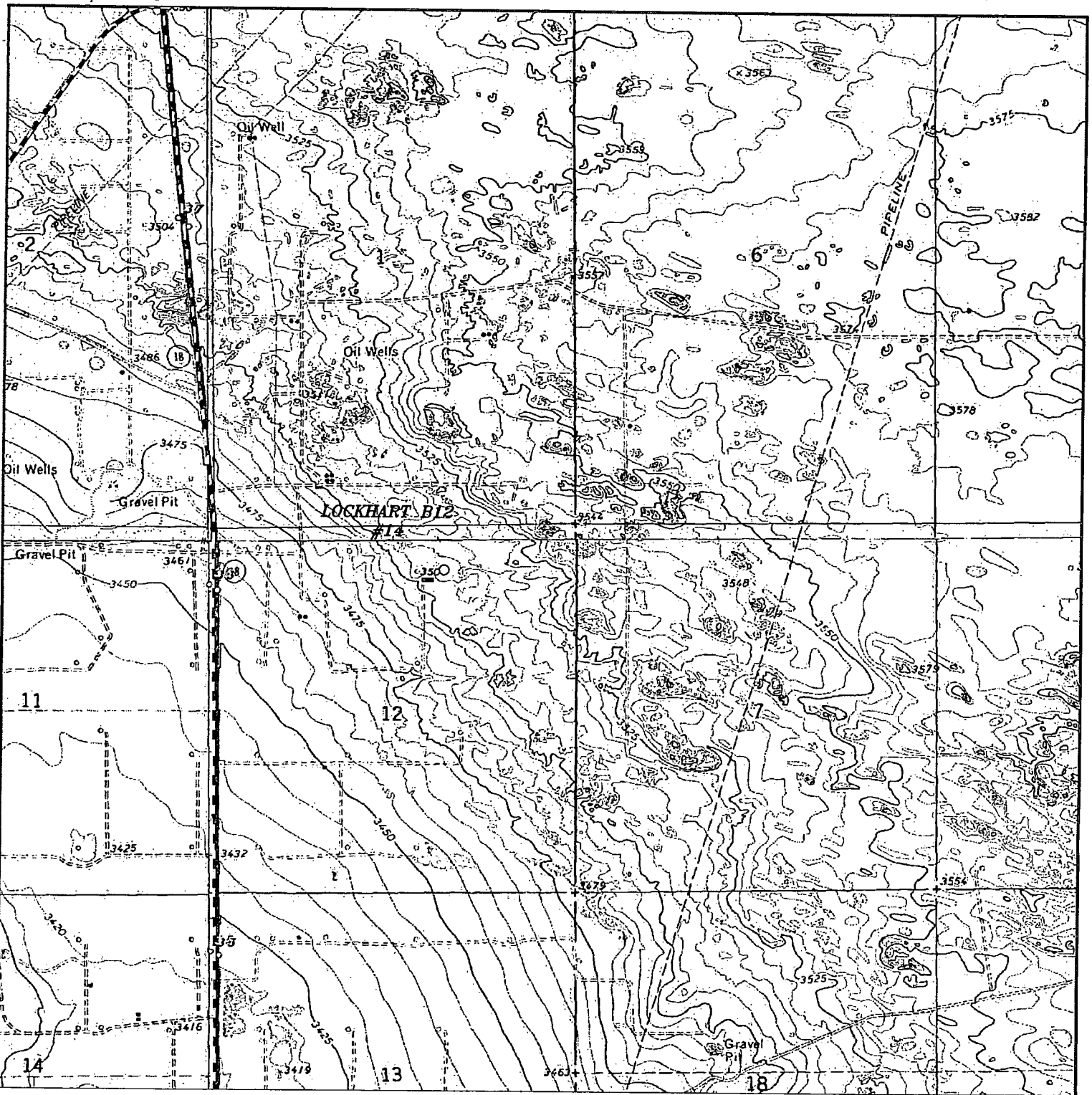
W.O. Number: JMS 30469

Survey Date: 05-21-2014

YELLOW TINT - USA LAND
 BLUE TINT - STATE LAND
 NATURAL COLOR - FEE LAND

Apache

EXPLORING WHAT'S POSSIBLE



LOCKHART B12 #14
 Located 660' FNL and 1905' FEL
 Section 12, Township 21 South, Range 37 East,
 N.M.P.M., Lea County, New Mexico.

basin
surveys
 focused on excellence
 in the oilfield

P.O. Box 1786
 1120 N. West County Rd.
 Hobbs, New Mexico 88241
 (575) 393-7316 - Office
 (575) 392-2206 - Fax
 basinsurveys.com

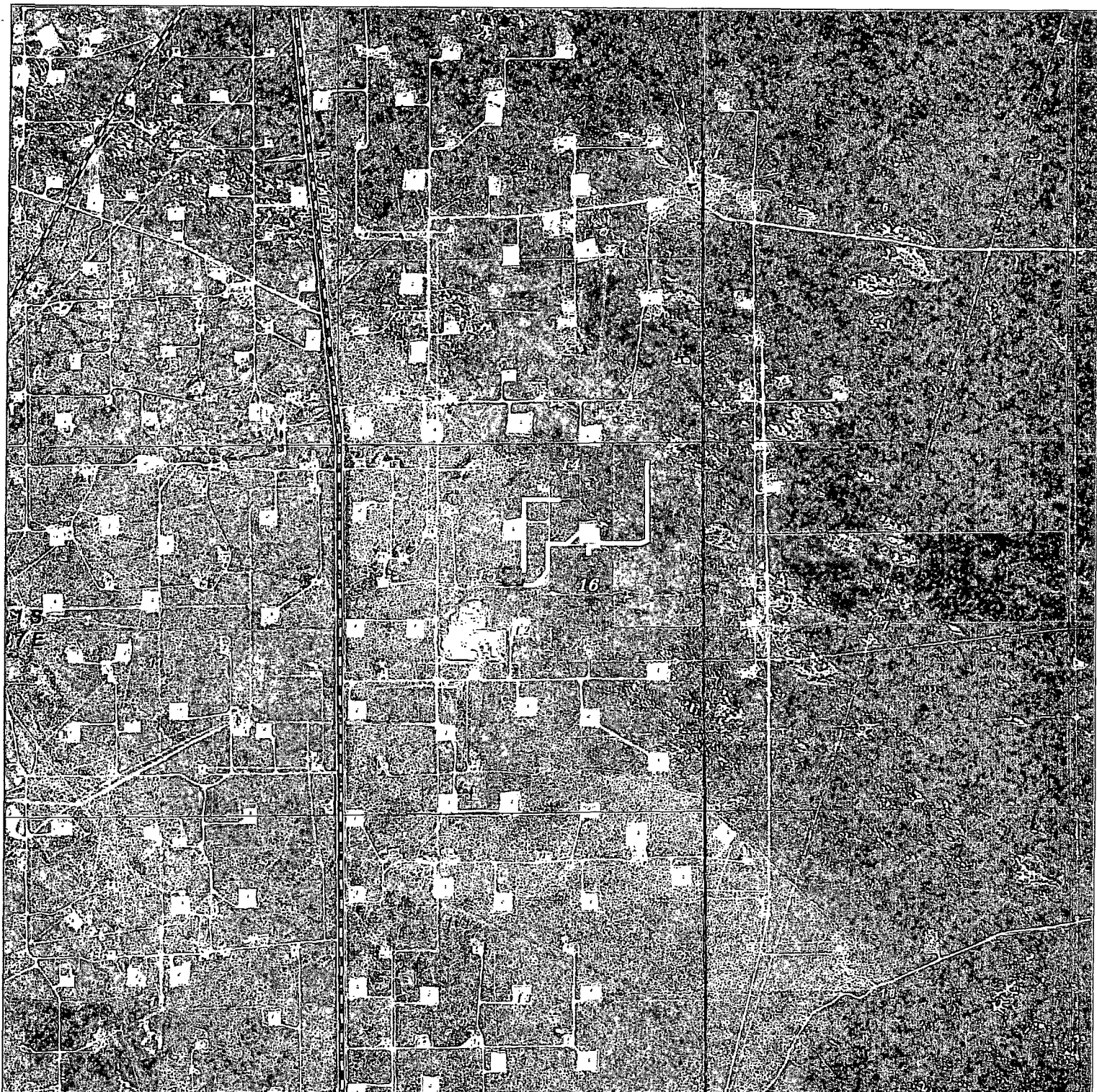
W.O. Number: DAJ 27579

Survey Date: 11-12-2012

Scale: 1" = 2000'

Date: 11-16-2012

APACHE
CORPORATION



LOCKHART B 12 ELECTRIC AND FLOWLINES
 Section 12, Township 21 South, Range 37 East,
 N.M.P.M., Lea County, New Mexico.

basin
surveys
 focused on excellence
 in the oilfield

P.O. Box 1786
 1120 N. West County Rd.
 Hobbs, New Mexico 88241
 (575) 393-7316 - Office
 (575) 392-2206 - Fax
 basinsurveys.com

0' 1000' 2000' 3000' 4000'
 SCALE: 1" = 2000'

W.O. Number: JMS 30469

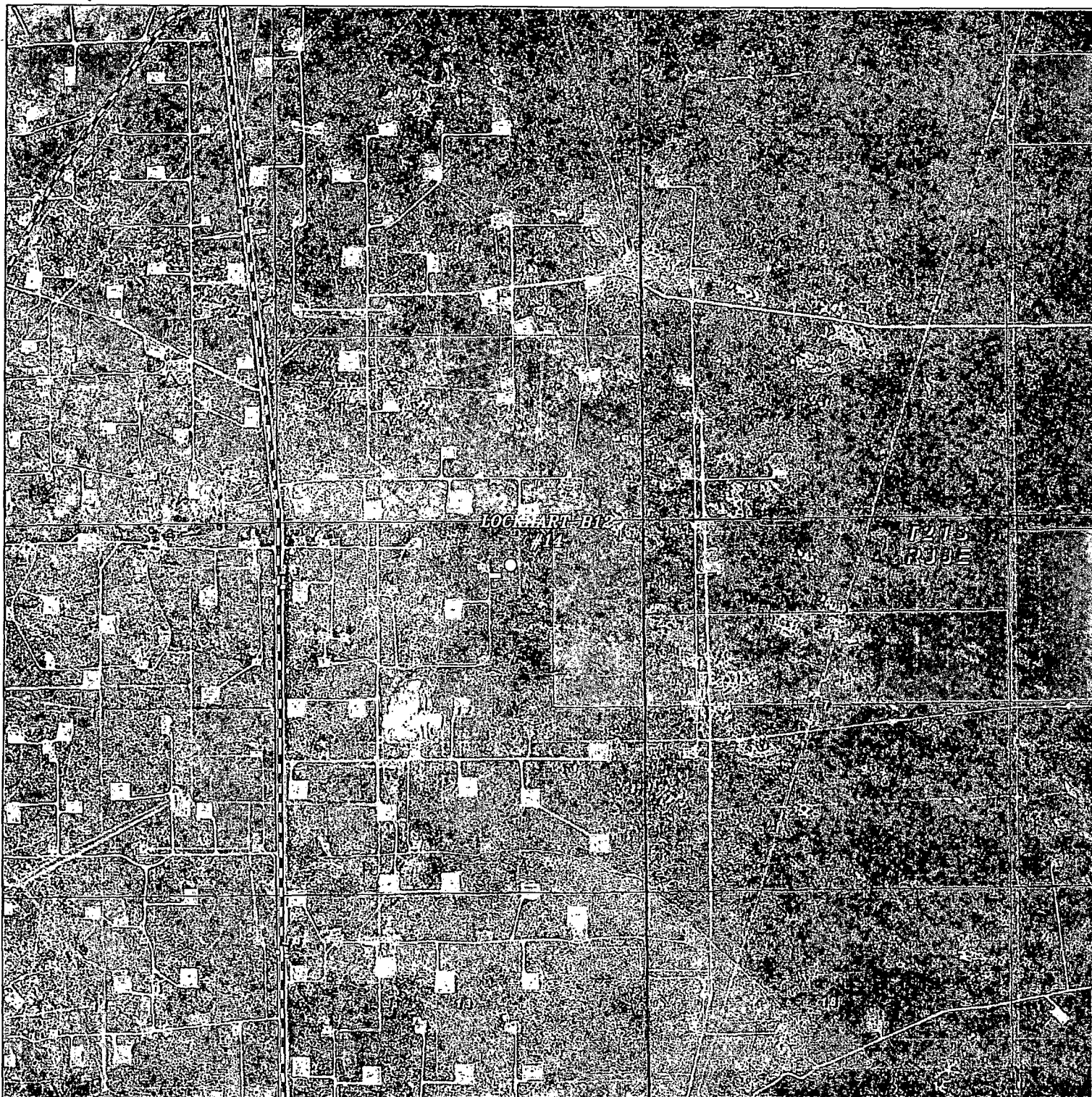
Survey Date: 05-21-2014

YELLOW TINT - USA LAND
 BLUE TINT - STATE LAND
 NATURAL COLOR - FEE LAND



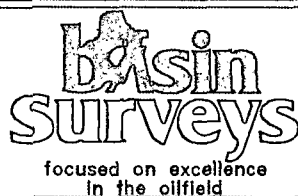
Apache

EXPLORING WHAT'S POSSIBLE



LOCKHART B12 #14

Located 660' FNL and 1905' FEL
Section 12, Township 21 South, Range 37 East,
N.M.P.M., Lea County, New Mexico.



P.O. Box 1786
1120 N. West County Rd.
Hobbs, New Mexico 88241
(575) 393-7316 - Office
(575) 392-2206 - Fax
basinsurveys.com

W.O. Number: DAJ 27579

Scale: 1" = 2000'

YELLOW TINT - USA LAND
BLUE TINT - STATE LAND
NATURAL COLOR - FEE LAND



APACHE
CORPORATION

APACHE CORPORATION

LOCKHART B 12 #14

660' FNL & 1905' FEL

UL: **B** SEC: 12 T21S R37E

1 MILE RADIUS



POSTED WELL DATA

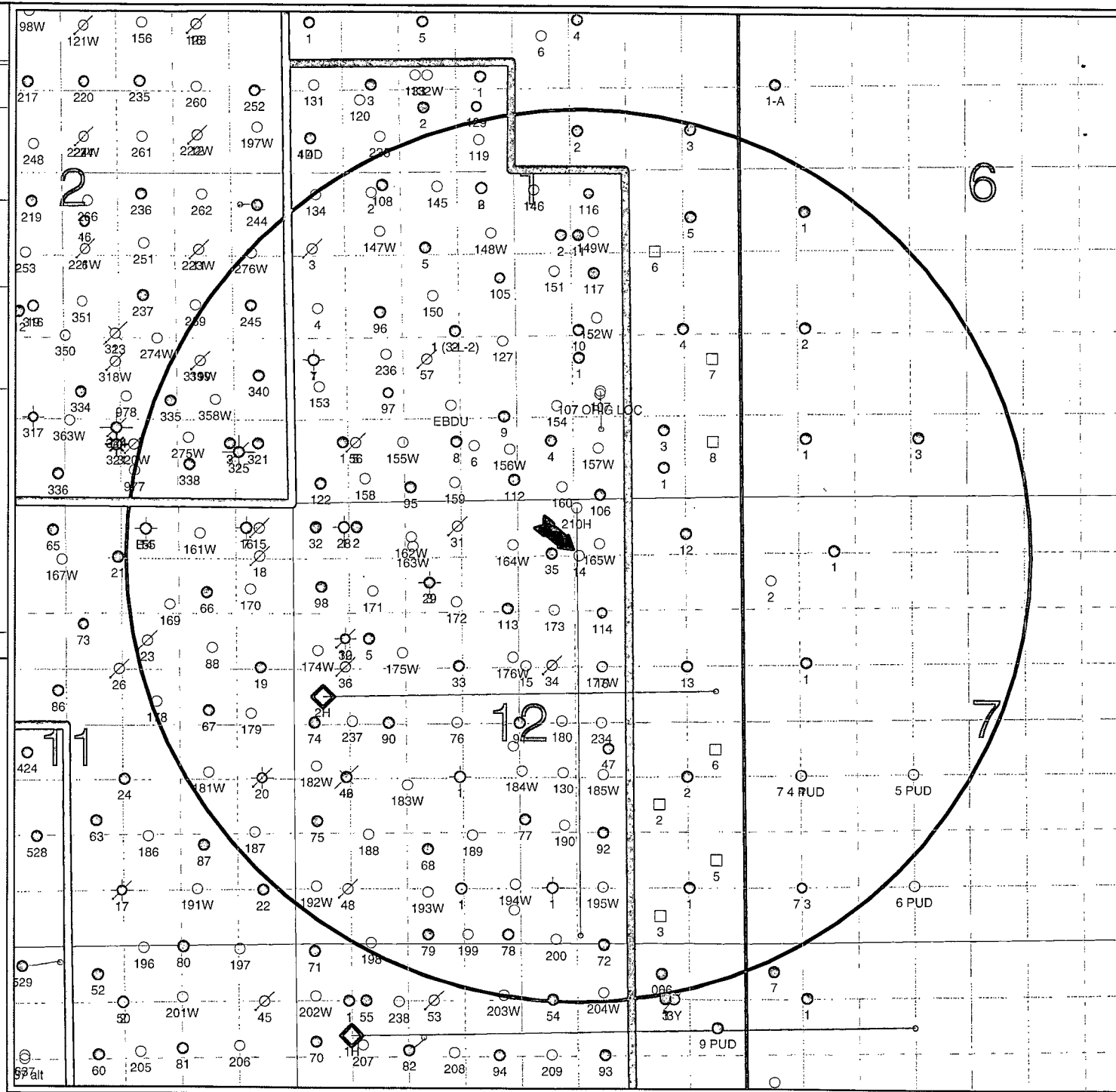
Well Number

WELL SYMBOLS

- WELL SYMBOLS**
- Deeper Exploratory
 - Gas Well
 - Location Only
 - Non Apache
 - Oil Well
 - Plugged and Abandoned
 - Active Producer
 - Producing Oil Shut In
 - Temporarily Abandoned Oil Well
 - Plugged Injection
 - Active Injection

February 21, 2013

Exhibit #2



**LOCKHART B 12 #14 ACCESS ROAD PLAT
EXHIBIT #1**

