

DISTRICT I
1833 N. Fourth Dr., Hobbs, NM 88240
Phone: (505) 386-6181 Fax: (505) 331-6720

DISTRICT II
211 E. Main St., Aragon, NM 88210
Phone: (505) 338-1221 Fax: (505) 338-4726

DISTRICT III
1000 Rio Bravo Rd., Artes, NM 87419
Phone: (505) 334-4178 Fax: (505) 334-6176

DISTRICT IV
1700 S. St. Francis Dr., Santa Fe, NM 87503
Phone: (505) 476-2460 Fax: (505) 476-1465

State of New Mexico
Energy, Minerals & Natural Resources Department
OIL CONSERVATION DIVISION
1220 South St. Francis Dr.
Santa Fe, New Mexico 87505

Form C-102
Revised August 1, 2011
Submit one copy to appropriate
District Office
☐ AMENDED REPORT

WELL LOCATION AND ACREAGE DEDICATION PLAT

API Number 30-025-41232	Pool Code Q7892	Pool Name WILCOX 6-06 526 3407P; Bone Spring
Property Code 39974	Property Name GREEN WAVE 17 FED	Well Number 1H
OGRID No 6137	Operator Name DEVON ENERGY PRODUCTION COMPANY, LP.	Elevation 3353.8'

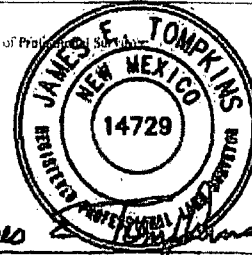
Surface Location

UL or lot no	Section	Township	Range	Lot Idn	Feet from the	North/South line	Feet from the	East/West line	County
N	17	26 S	34 E		25	SOUTH	1980	WEST	LEA

Bottom Hole Location If Different From Surface

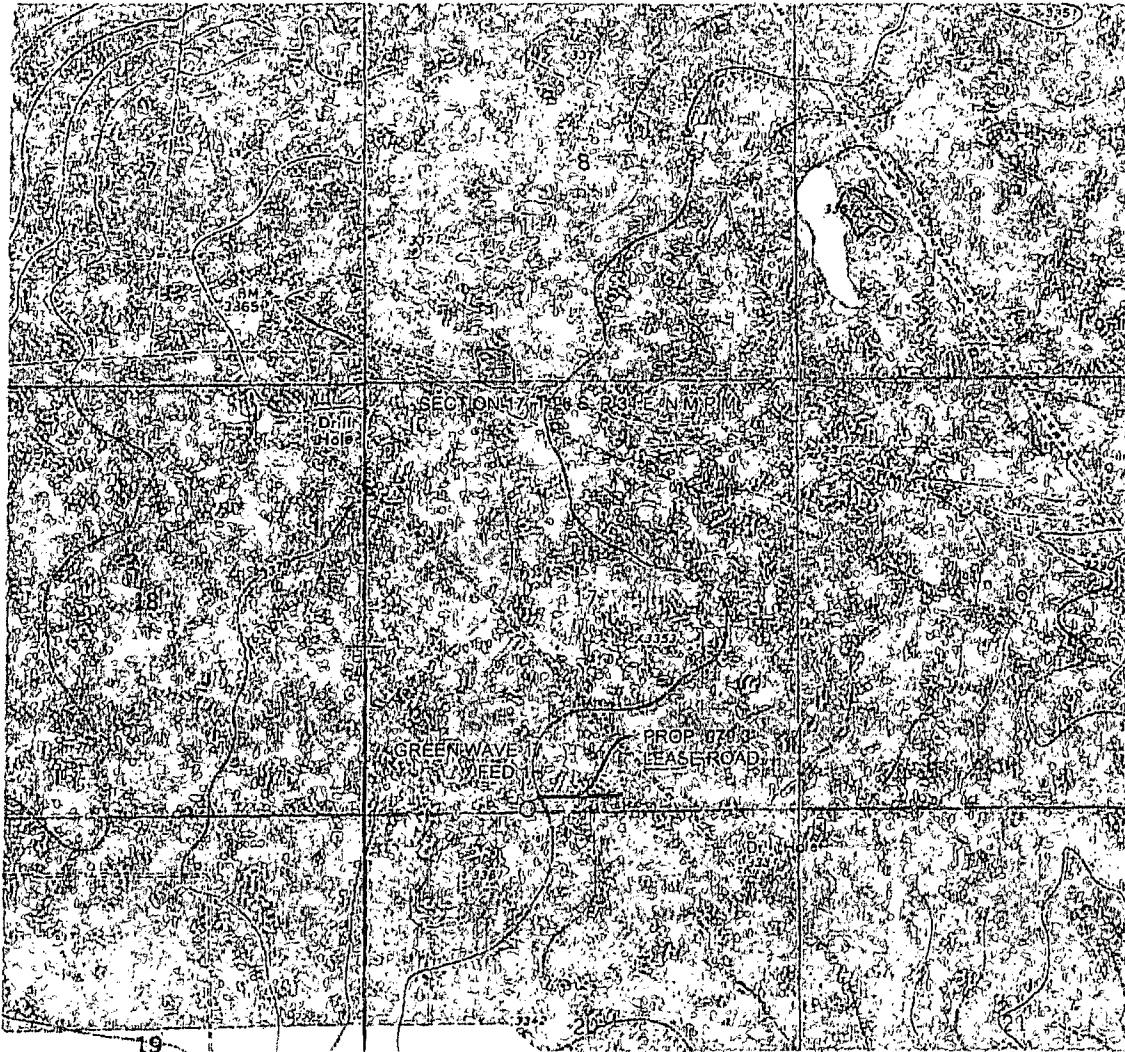
UL or lot no	Section	Township	Range	Lot Idn	Feet from the	North/South line	Feet from the	East/West line	County
C	17	26 S	34 E		330	NORTH	1980	WEST	LEA
Dedicated Acres 160	Joint or Infill	Consolidated Code	Order No.						

No allowable will be assigned to this completion until all interests have been consolidated or a non-standard unit has been approved by the division.

<p>NW COR SEC 17 NMSP-E (NAD 83) Y = 383178.4' N X = 708386.3' E N LAT. = N32° 03' 02.52" W LONG. = W103° 30' 01.60"</p>	<p>330'</p>	<p>GREEN WAVE 17 FED-1H BHL NMSP-E (NAD 83) Y = 382862.9' N X = 801368.2' W N LAT. = N32° 02' 59.25" W LONG. = W103° 29' 38.59"</p>	<p>NE COR SEC 17 NMSP-E (NAD 83) Y = 383218.2' N X = 804674.4' E N LAT. = N32° 03' 02.51" W LONG. = W103° 29' 00.14"</p>	<p>OPERATOR CERTIFICATION I hereby certify that the information contained herein is true and complete to the best of my knowledge and belief, and that this organization either owns a working interest or unleased mineral interest in the land including the proposed bottom hole location or has a right to drill this well at this location pursuant to a contract with an owner of such a mineral or working interest, or to voluntary pooling agreement or a compulsory pooling order heretofore entered by the division.</p> <p><i>Trina C. Couch</i> 9/19/14 Signature Title Trina C. Couch, Regulatory Analyst Print Name trina.couch@dvn.com E-mail Address</p>
<p>SW COR SEC 17 NMSP-E (NAD 83) Y = 377902.6' N X = 798430.8' E N LAT. = N32° 02' 10.31" W LONG. = W103° 30' 01.54"</p>	<p>N 00° 28' 33" W - 4914.3'</p>	<p>GREEN WAVE 17 FED-1H SHL NMSP-E (NAD 83) Y = 377948.8' N X = 801410.4' W N LAT. = N32° 02' 10.62" W LONG. = W103° 29' 38.54"</p>	<p>SE COR SEC 17 NMSP-E (NAD 83) Y = 377935.9' N X = 804720.1' E N LAT. = N32° 02' 10.24" W LONG. = W103° 29' 00.09"</p>	<p>SURVEYORS CERTIFICATION I hereby certify that the well location shown on this plat was plotted from field notes of actual surveys made by me or under my supervision, and that the same is true and correct to the best of my belief.</p> <p>May 31, 2012 Date of Survey Signature and Seal of Professional Surveyor  Job No. WTC48540 JAMES E. TOMPKINS 14729 Certificate Number</p>

OCT 01 2014

LOCATION VERIFICATION MAP



SCALE: 1" = 2000'

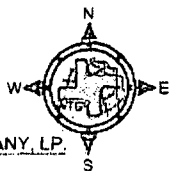
SECTION 17, T 26 S, R 34 E, N.M.P.M.

COUNTY: LEA STATE: NM

DESCRIPTION: 25' FSL & 1980' FWL

OPERATOR: DEVON ENERGY PRODUCTION COMPANY, LP.

WELL NAME: GREEN WAVE 17 FED-1H



DRIVING DIRECTIONS:

FROM THE JUNCTION OF STATE HIGHWAY 128 AND BATTLE AXE ROAD/J-2, ABOUT 14 MILES WEST OF JAL, NM. GO 12.3 MILES ON BATTLE AXE ROAD TO A LEASE ROAD. GO SOUTH 0.6 MILES TO EL PASO R.O.W. ROAD. GO EAST 1.9 MILES TO LEASE ROAD. GO SOUTH 1.1 TO AN OLD LEASE ROAD. GO SOUTHEAST 1.2 MILES TO BEGINNING OF A PROPOSED LEASE ROAD, LOCATION FLAG IS ±1456 TO THE WEST.

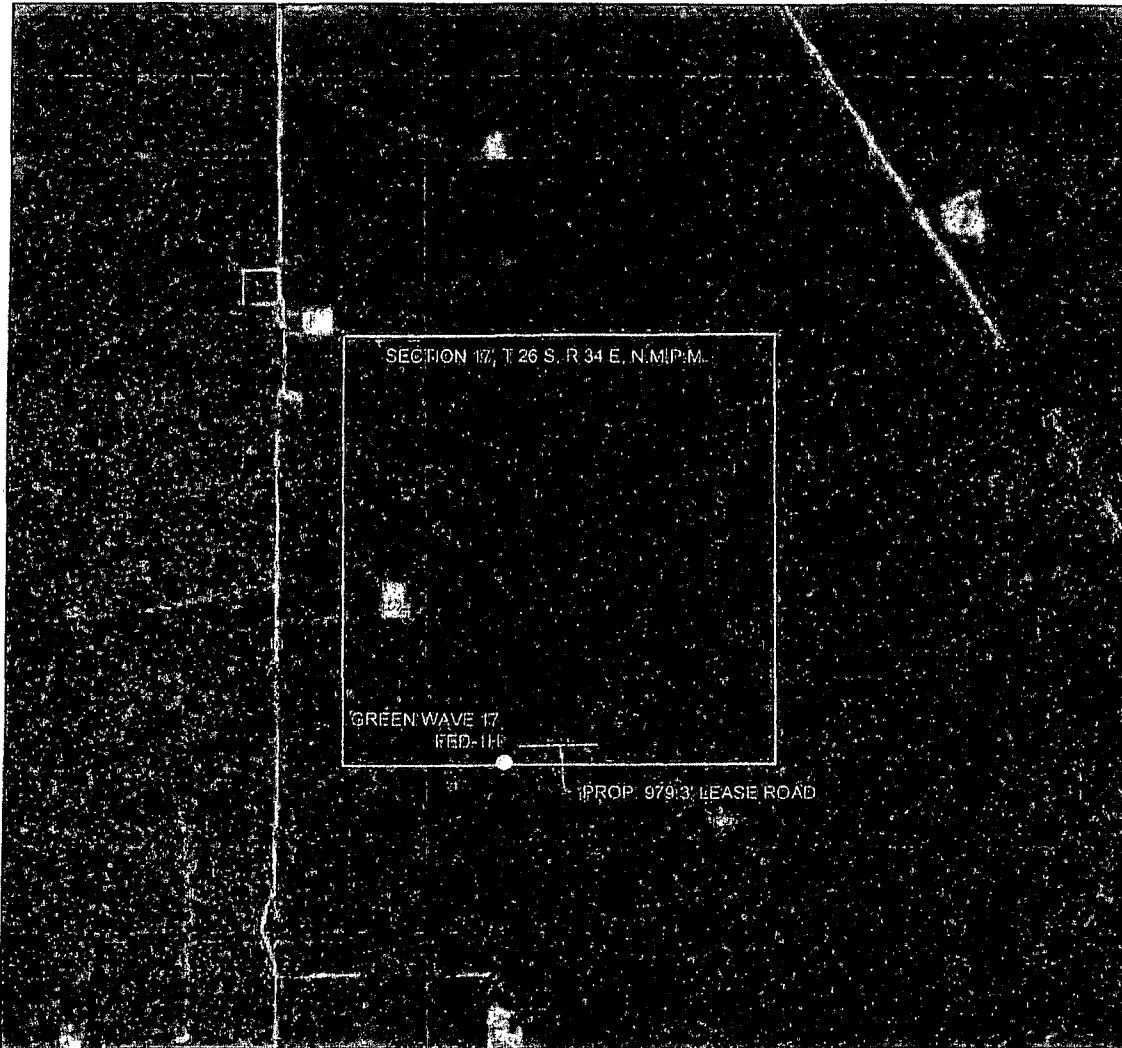


WEST TEXAS CONSULTANTS, INC.
ENGINEERS PLANNERS SURVEYORS
405 S.W. 1st STREET
ANDREWS, TEXAS 79714
(432) 523-2181



JOB No.: WTC48540

AERIAL MAP



SCALE: 1" = 2000'

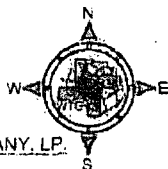
SECTION 17, T 26 S. R 34 E. N.M.P.M.

COUNTY: LEA STATE: NM

DESCRIPTION: 25' FSL & 1980' FWL

OPERATOR: DEVON ENERGY PRODUCTION COMPANY, L.P.

WELL NAME: GREEN WAVE 17 FED-1H

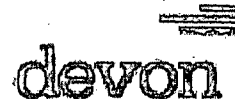


DRIVING DIRECTIONS:

FROM THE JUNCTION OF STATE HIGHWAY 128 AND BATTLE AXE ROAD/J-2, ABOUT 14 MILES WEST OF JAL, NM. GO 12.3 MILES ON BATTLE AXE ROAD TO A LEASE ROAD. GO SOUTH 0.6 MILES TO EL PASO R.O.W. ROAD. GO EAST 1.9 MILES TO LEASE ROAD. GO SOUTH 1.1 TO AN OLD LEASE ROAD. GO SOUTHEAST 1.2 MILES TO BEGINNING OF A PROPOSED LEASE ROAD, LOCATION FLAG IS ±1456 TO THE WEST.



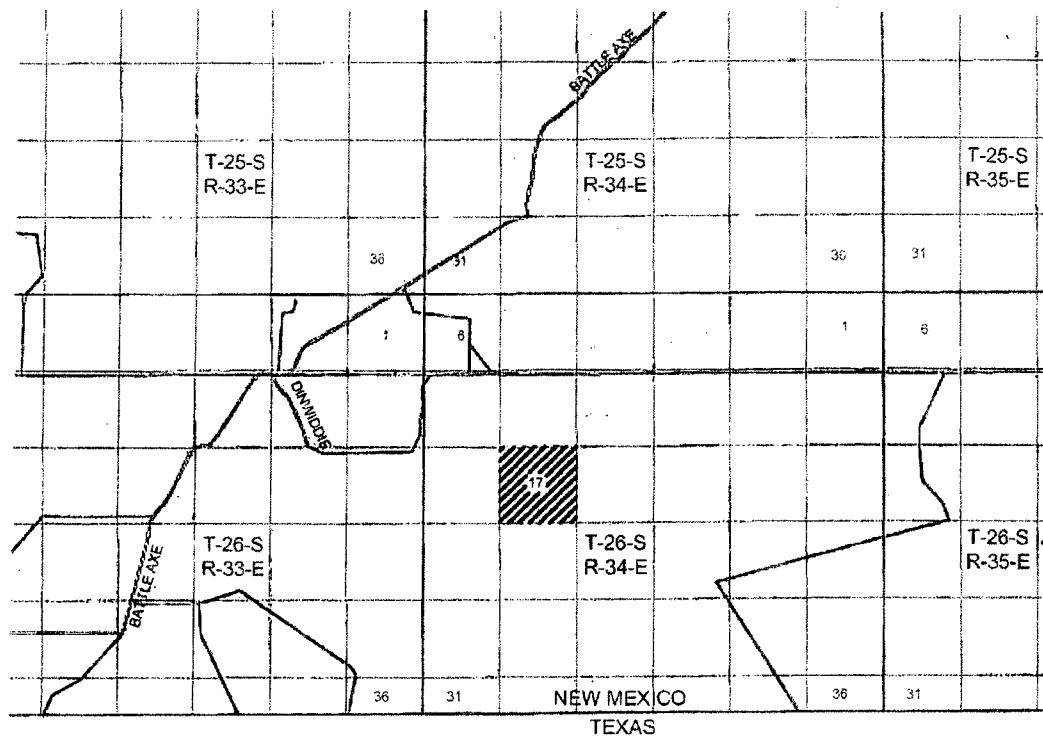
WEST TEXAS CONSULTANTS, INC.
ENGINEERS PLANNERS SURVEYORS
405 S.W. 1st STREET
ANDREWS, TEXAS 79714
(432) 523-2181



JOB No.: WTC-18540

Copyright © 2000 by Devon Energy Corporation. All rights reserved. This document is the property of Devon Energy Corporation. It is to be used only for the project and location specified herein. It is not to be reproduced or transmitted in any form or by any means electronic or mechanical, including photocopying, recording, or by any information storage and retrieval system, without permission in writing from Devon Energy Corporation.

VICINITY MAP



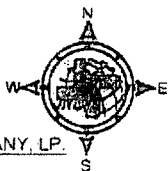
SECTION 17, T 26 S, R 34 E, N.M.P.M.

COUNTY: LEA STATE: NM

DESCRIPTION: 25' FSL & 1980' FWL

OPERATOR: DEVON ENERGY PRODUCTION COMPANY, LP.

WELL NAME: GREEN WAVE 17 FED-1H



DRIVING DIRECTIONS:

FROM THE JUNCTION OF STATE HIGHWAY 128 AND BATTLE AXE ROAD/J-2, ABOUT 14 MILES WEST OF JAL., NM. GO 12.3 MILES ON BATTLE AXE ROAD TO A LEASE ROAD. GO SOUTH 0.6 MILES TO EL PASO R.O.W. ROAD. GO EAST 1.9 MILES TO LEASE ROAD. GO SOUTH 1.1 TO AN OLD LEASE ROAD. GO SOUTHEAST 1.2 MILES TO BEGINNING OF A PROPOSED LEASE ROAD. LOCATION FLAG IS ±1456 TO THE WEST.



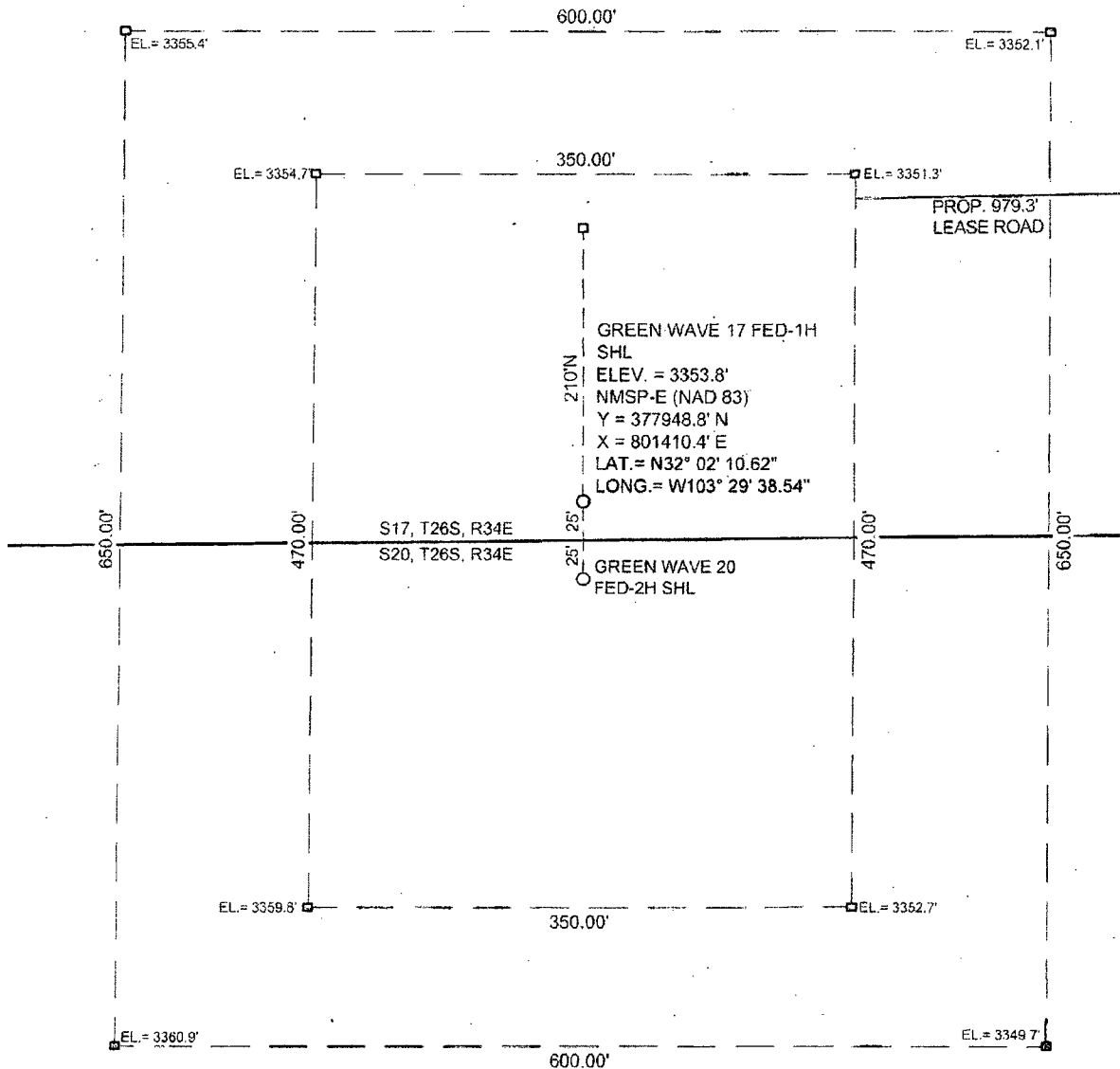
West Texas Consultants, Inc.
ENGINEERS PLANNERS SURVEYORS
405 S.W. 1st STREET
ANDREWS, TEXAS 79714
(432) 523-2181



JOB No.: WTC48540

Copyright © 2000, West Texas Consultants, Inc. All Rights Reserved. This map is the property of West Texas Consultants, Inc. and is not to be reproduced without written permission.

SITE LOCATION



SCALE: 1" = 100'

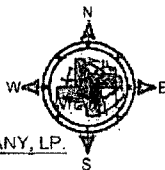
SECTION 17, T 26 S, R 34 E, N.M.P.M.

COUNTY: LEA STATE: NM

DESCRIPTION: 25' FSL & 1980' FWL

OPERATOR: DEVON ENERGY PRODUCTION COMPANY, LP.

WELL NAME: GREEN WAVE 17 FED-1H

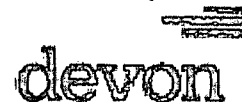


DRIVING DIRECTIONS:

FROM THE JUNCTION OF STATE HIGHWAY 128 AND BATTLE AXE ROAD/J-2, ABOUT 14 MILES WEST OF JAL, NM. GO 12.3 MILES ON BATTLE AXE ROAD TO A LEASE ROAD. GO SOUTH 0.6 MILES TO EL PASO R.O.W. ROAD. GO EAST 1.9 MILES TO LEASE ROAD. GO SOUTH 1.1 TO AN OLD LEASE ROAD. GO SOUTHEAST 1.2 MILES TO BEGINNING OF A PROPOSED LEASE ROAD, LOCATION FLAG IS ±1456 TO THE WEST.



WEST TEXAS CONSULTANTS, INC.
ENGINEERS PLANNERS SURVEYORS
405 S.W. 1st STREET
ANDREWS, TEXAS 79714
(432) 523-2181



JOB No.: WTC48540

COPYRIGHT © 2004 Surveyors & Engineers, Inc. All Rights Reserved. This is a preliminary drawing and should not be used for construction purposes without the approval of the Surveyors & Engineers, Inc.