

District I  
1625 N. French Dr., Hobbs, NM 88240  
Phone: (575) 393-6161 Fax: (575) 393-0720  
District II  
811 S. First St., Artesia, NM 88210  
Phone: (575) 748-1283 Fax: (575) 748-9720  
District III  
1000 Rio Brazos Road, Aztec, NM 87410  
Phone: (505) 334-6178 Fax: (505) 334-6170  
District IV  
1220 S. St. Francis Dr., Santa Fe, NM 87505  
Phone: (505) 476-3460 Fax: (505) 476-3462

State of New Mexico  
Energy, Minerals & Natural Resources Department  
OIL CONSERVATION DIVISION  
1220 South St. Francis Dr.  
Santa Fe, NM 87505

Form C-102  
Revised August 1, 2011  
Submit one copy to appropriate  
District Office  
☐ AMENDED REPORT

WELL LOCATION AND ACREAGE DEDICATION PLAT

<sup>1</sup> API Number <b>90-025-42161</b>	<sup>2</sup> Pool Code <b>97775</b>	<sup>3</sup> Pool Name <b>SWD; DEV-FUS-MON-SIMP-ELL</b>
<sup>4</sup> Property Code <b>313750</b>	<sup>5</sup> Property Name <b>SEAWOLF 16 SWD</b>	<sup>6</sup> Well Number <b>1</b>
<sup>7</sup> OGRID No. <b>6137</b>	<sup>8</sup> Operator Name <b>DEVON ENERGY PRODUCTION COMPANY, L.P.</b>	<sup>9</sup> Elevation <b>3120.4</b>

<sup>10</sup> Surface Location

UL or lot no.	Section	Township	Range	Lot Idn	Feet from the	North/South line	Feet from the	East/West line	County
<b>P</b>	<b>16</b>	<b>26 S.</b>	<b>35 E</b>		<b>220</b>	<b>SOUTH</b>	<b>180</b>	<b>EAST</b>	<b>LEA</b>

<sup>11</sup> Bottom Hole Location If Different From Surface

UL or lot no.	Section	Township	Range	Lot Idn	Feet from the	North/South line	Feet from the	East/West line	County
<sup>12</sup> Dedicated Acres <b>40</b>	<sup>13</sup> Joint or Infill	<sup>14</sup> Consolidation Code	<sup>15</sup> Order No.						

No allowable will be assigned to this completion until all interests have been consolidated or a non-standard unit has been approved by the division.

<p>N 89°33'27"E 2641.63 FT</p> <p>N O CORNER SEC. 16 LAT. = 32.0505440°N LONG. = 103.3724140°W NMSP EAST (FT) N = 383450.79 E = 839053.65</p> <p>NE CORNER SEC. 16 LAT. = 32.0505351°N LONG. = 103.3638898°W NMSP EAST (FT) N = 383471.19 E = 841694.79</p> <p>NOTE: LATITUDE AND LONGITUDE COORDINATES ARE SHOWN USING THE NORTH AMERICAN DATUM OF 1983 (NAD83). LISTED NEW MEXICO STATE PLANE EAST COORDINATES ARE GRID (NAD83). BASIS OF BEARING AND DISTANCES USED ARE NEW MEXICO STATE PLANE EAST COORDINATES MODIFIED TO THE SURFACE.</p> <p>W O CORNER SEC. 16 LAT. = 32.0432880°N LONG. = 103.3809323°W NMSP EAST (FT) N = 380787.73 E = 836437.66</p> <p>E O CORNER SEC. 16 LAT. = 32.0432700°N LONG. = 103.3638849°W NMSP EAST (FT) N = 380828.20 E = 841720.06</p> <p>SEAWOLF "16" SWD 1 ELEV. = 3120.4' LAT. = 32.0366156°N (NAD83) LONG. = 103.3644619°W NMSP EAST (FT) N = 378405.75 E = 841562.96</p> <p>SW CORNER SEC. 16 LAT. = 32.0360296°N LONG. = 103.3809251°W NMSP EAST (FT) N = 378147.20 E = 836463.17</p> <p>S O CORNER SEC. 16 LAT. = 32.0360218°N LONG. = 103.3723963°W NMSP EAST (FT) N = 378167.76 E = 839106.15</p> <p>SE CORNER SEC. 16 LAT. = 32.0360101°N LONG. = 103.3638807°W NMSP EAST (FT) N = 378187.09 E = 841745.05</p> <p>SURFACE LOCATION</p> <p>022'</p> <p>589°33'15"W 2643.47 FT</p> <p>589°34'49"W 2639.37 FT</p> <p>500°32'51"E 2643.51 FT</p> <p>500°32'51"E 2643.51 FT</p> <p>500°32'51"E 2641.63 FT</p>		<p><b><sup>17</sup> OPERATOR CERTIFICATION</b></p> <p>I hereby certify that the information contained herein is true and complete to the best of my knowledge and belief, and that this organization either owns a working interest or unleased mineral interest in the land including the proposed bottom hole location or has a right to drill this well at this location pursuant to a contract with an owner of such a mineral or working interest, or to a voluntary pooling agreement or a compulsory pooling order heretofore entered by the Division.</p> <p><i>[Signature]</i> 9/29/2014 Signature Date</p> <p>David H. Cook Regulatory Specialist Printed Name</p> <p>david.cook@dmn.com E-mail Address</p> <p><b><sup>18</sup> SURVEYOR CERTIFICATION</b></p> <p>I hereby certify that the well location shown on this plat was plotted from field notes of actual surveys made by me or under my supervision, and that the same is true and correct to the best of my belief.</p> <p>SEPTEMBER 11, 2014 Date of Survey</p> <p><i>[Signature]</i> Signature and Seal of Professional Surveyor</p> <p>Certificate Number: FILLIPON F. JARAMILLO, PLS 12797 SURVEY NO. 3316A</p>
---	--	---

PM

OCT 02 2014

# SITE MAP



SCALE 1" = 100

IN JAL NM AT THE INTERSECTION OF SR 126 (KANSAS) AND SR 205 (THIRD STREET) GO SOUTH ON SR 205 8.16 MILES, KEEP RIGHT TO BECKHAM ROAD ON RIGHT, GO WEST ON CALICHE LEASE ROAD (BECKHAM ROAD) 5.4 MILES TO ROAD INTERSECTION, TURN RIGHT GO NORTH 0.95 MILES TO CALICHE LEASE ROAD ON RIGHT JUST BEFORE CATTLE GUARD, GO NORTH 0.81 MILES JUST BEFORE EAST-WEST FENCE LINE, FOLLOW FLAGS WEST THROUGH NORTH-SOUTH FENCE 0.43 MILES (2255') TO SOUTHEAST CORNER OF PROPOSED PAD.

SEAWOLF "16" SWD 1

SEPTEMBER 11, 2014

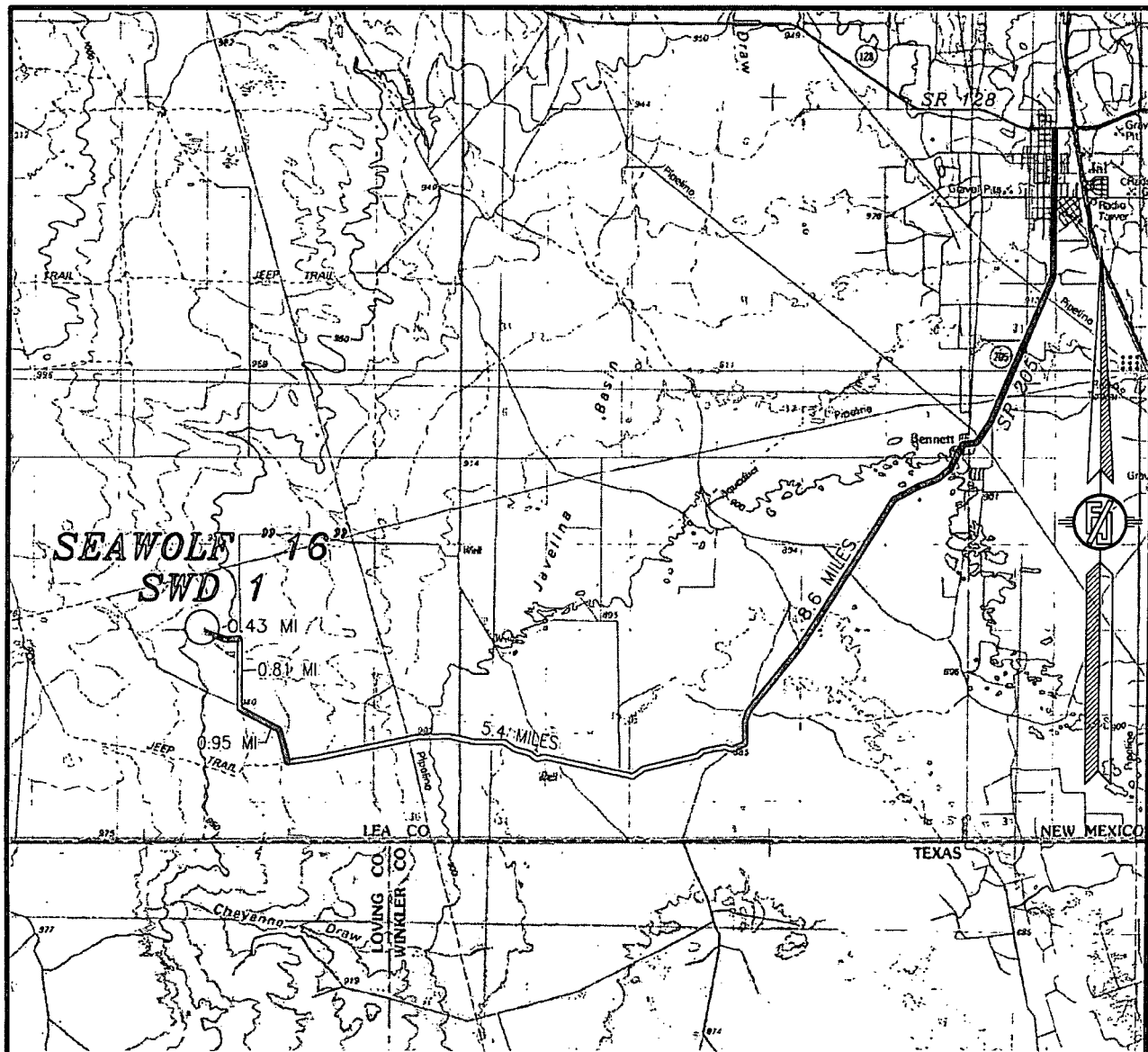
*SURVEY NO. 3316A*

MADRON SURVEYING, INC.

301 SOUTH CANAL  
(575) 234-3341

CARLSBAD, NEW MEXICO

SECTION 16, TOWNSHIP 26 SOUTH, RANGE 35 EAST, N.M.P.M.  
LEA COUNTY, STATE OF NEW MEXICO  
VICINITY MAP



DISTANCES IN MILES

NOT TO SCALE

DEVON ENERGY PRODUCTION COMPANY, L.P.

**SEAWOLF "16" SWD 1**

LOCATED 220 FT. FROM THE SOUTH LINE  
AND 180 FT. FROM THE EAST LINE OF  
SECTION 16, TOWNSHIP 26 SOUTH,  
RANGE 35 EAST, N.M.P.M.  
LEA COUNTY, STATE OF NEW MEXICO

**DIRECTIONS TO LOCATION**

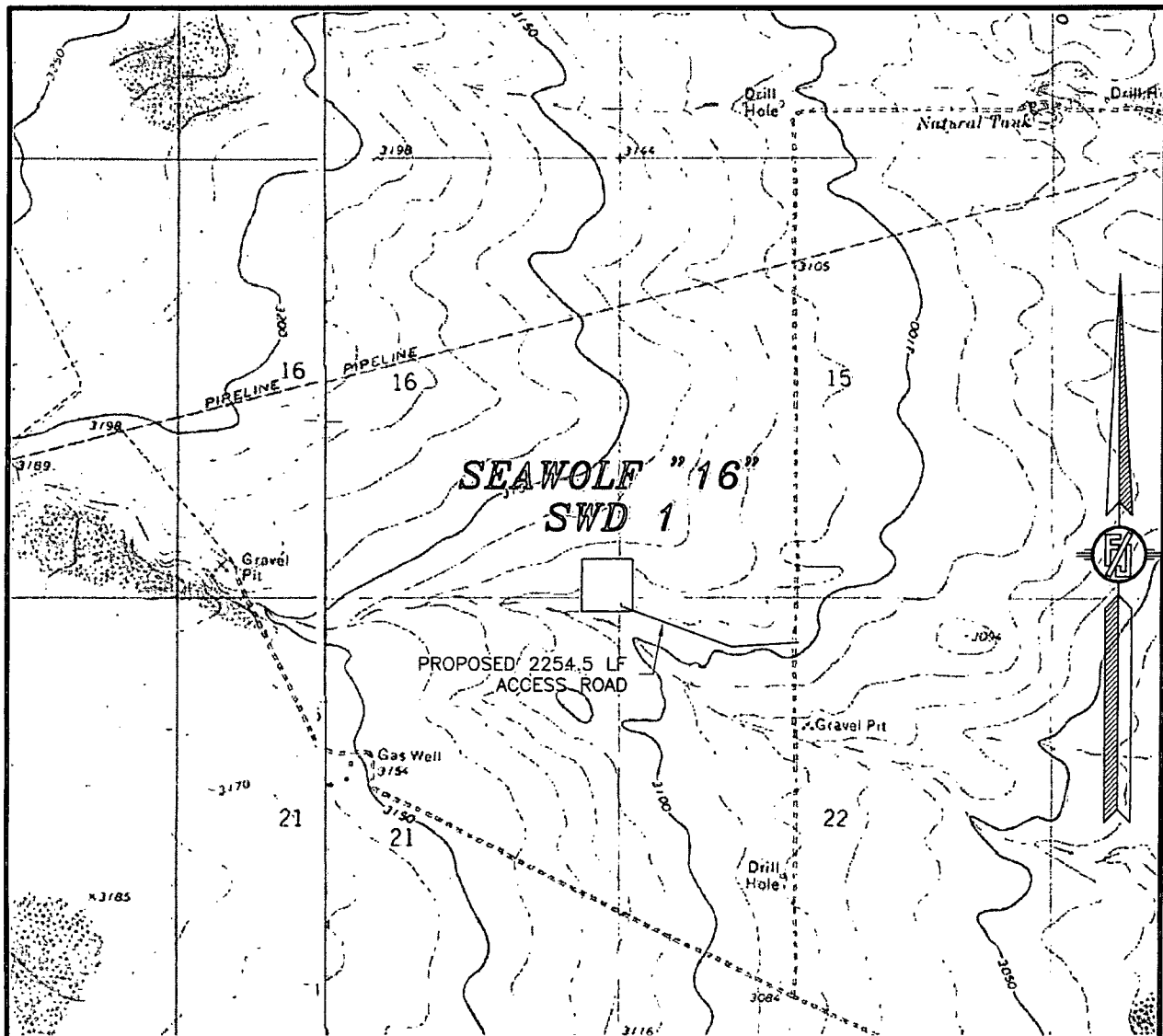
IN JAL NM AT THE INTERSECTION OF SR 128 (KANSAS) AND SR 205 (THIRD STREET) GO SOUTH ON SR 205 8.6 MILES, KEEP RIGHT TO BECKHAM ROAD ON RIGHT, GO WEST ON CALICHE LEASE ROAD (BECKHAM ROAD) 5.4 MILES TO ROAD INTERSECTION. TURN RIGHT GO NORTH 0.95 MILES TO CALICHE LEASE ROAD ON RIGHT JUST BEFORE CATTLE GUARD. GO NORTH 0.81 MILES JUST BEFORE EAST-WEST FENCE LINE. FOLLOW FLAGS WEST THROUGH NORTH-SOUTH FENCE. 0.43 MILES (2255') TO SOUTHEAST CORNER OF PROPOSED PAD.

SEPTEMBER 11, 2014

SURVEY NO. 3316A

MADRON SURVEYING, INC. 301 SOUTH CANAL (575) 234-3341 CARLSBAD, NEW MEXICO

SECTION 16, TOWNSHIP 26 SOUTH, RANGE 35 EAST, N.M.P.M.  
LEA COUNTY, STATE OF NEW MEXICO  
LOCATION VERIFICATION MAP



USGS QUAD MAP:  
JAVELINA BASIN &  
ANDREWS PLACE

NOT TO SCALE

DEVON ENERGY PRODUCTION COMPANY, L.P.

**SEAWOLF "16" SWD 1**

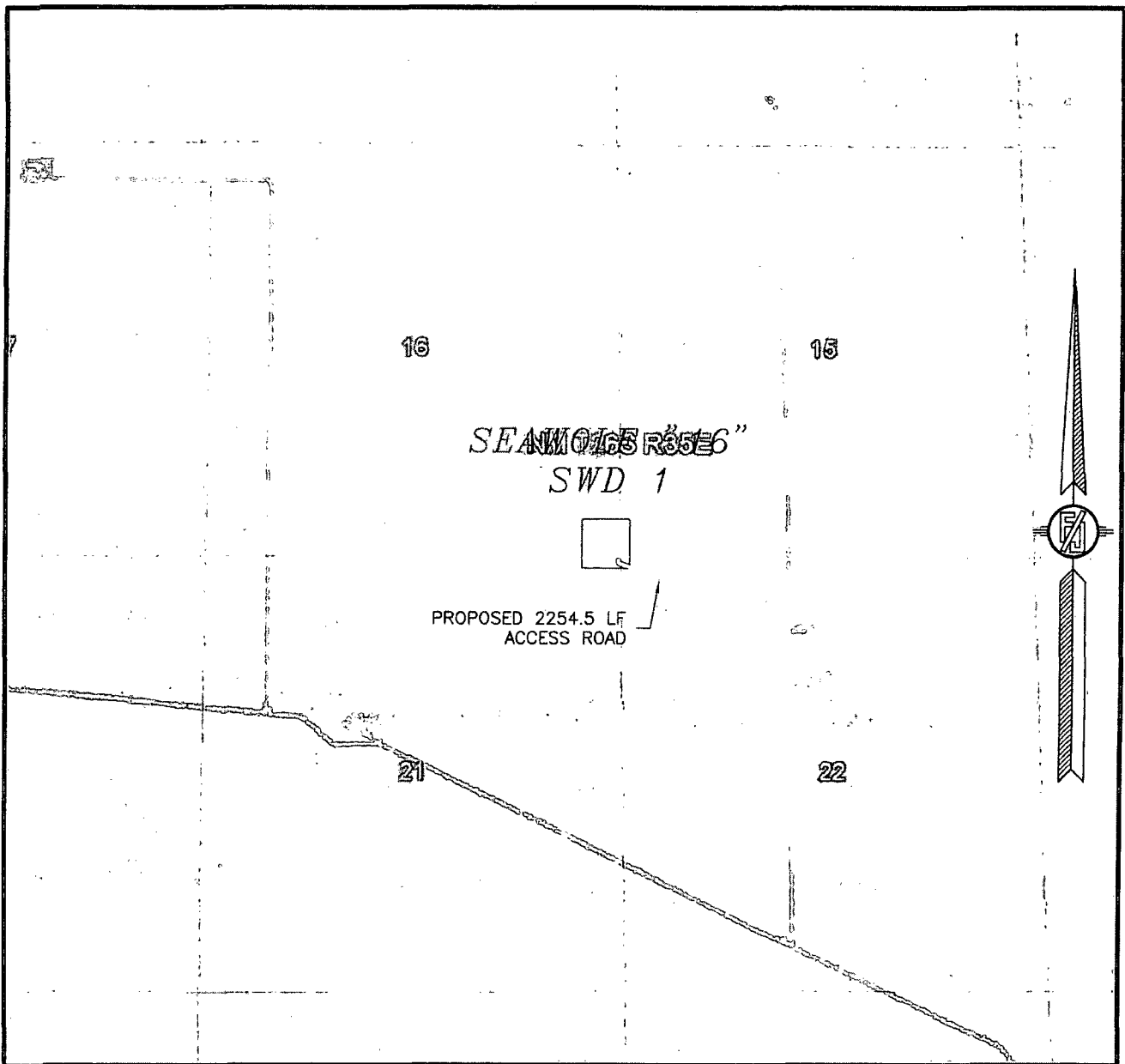
LOCATED 220 FT. FROM THE SOUTH LINE  
AND 180 FT. FROM THE EAST LINE OF  
SECTION 16, TOWNSHIP 26 SOUTH,  
RANGE 35 EAST, N.M.P.M.  
LEA COUNTY, STATE OF NEW MEXICO

SEPTEMBER 11, 2014

SURVEY NO. 3316A

MADRON SURVEYING, INC. 301 SOUTH CANAL (575) 234-3341 CARLSBAD, NEW MEXICO

SECTION 16, TOWNSHIP 26 SOUTH, RANGE 35 EAST, N.M.P.M.  
LEA COUNTY, STATE OF NEW MEXICO  
AERIAL PHOTO



NOT TO SCALE  
AERIAL PHOTO:  
GOOGLE EARTH  
APRIL 2013

DEVON ENERGY PRODUCTION COMPANY, L.P.

**SEAWOLF "16" SWD 1**

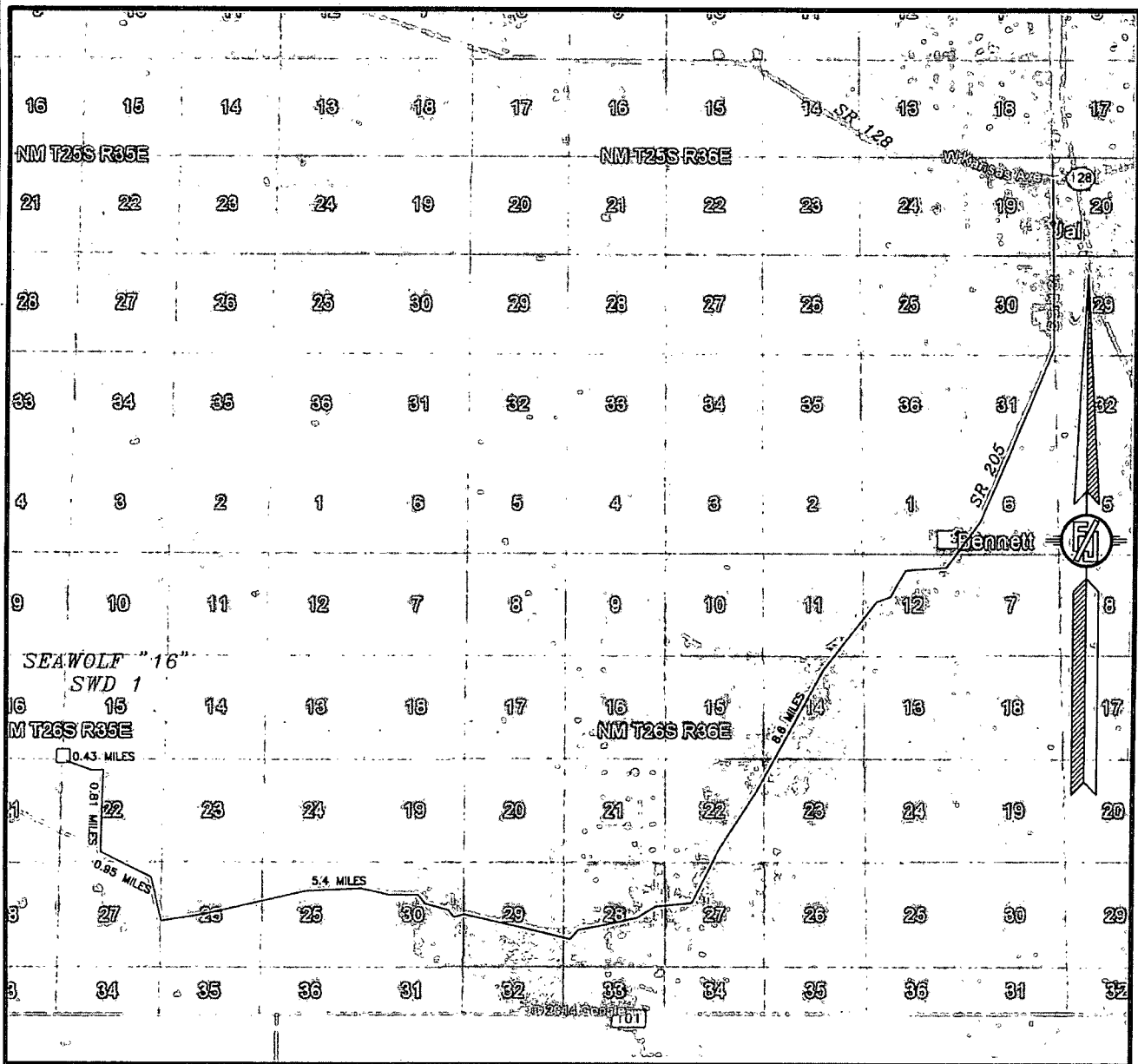
LOCATED 220 FT. FROM THE SOUTH LINE  
AND 180 FT. FROM THE EAST LINE OF  
SECTION 16, TOWNSHIP 26 SOUTH,  
RANGE 35 EAST, N.M.P.M.  
LEA COUNTY, STATE OF NEW MEXICO

SEPTEMBER 11, 2014

SURVEY NO. 3316A

MADRON SURVEYING, INC. 301 SOUTH CANAL (575) 234-3341 CARLSBAD, NEW MEXICO

SECTION 16, TOWNSHIP 26 SOUTH, RANGE 35 EAST, N.M.P.M.  
LEA COUNTY, STATE OF NEW MEXICO  
ACCESS AERIAL ROUTE MAP



NOT TO SCALE  
AERIAL PHOTO:  
GOOGLE EARTH  
APRIL 2013

DEVON ENERGY PRODUCTION COMPANY, L.P.

SEAWOLF "16" SWD 1

LOCATED 220 FT. FROM THE SOUTH LINE  
AND 180 FT. FROM THE EAST LINE OF  
SECTION 16, TOWNSHIP 26 SOUTH,  
RANGE 35 EAST, N.M.P.M.  
LEA COUNTY, STATE OF NEW MEXICO

SEPTEMBER 11, 2014

SURVEY NO. 3316A

MADRON SURVEYING, INC. 301 SOUTH CANAL CARLSBAD, NEW MEXICO  
(575) 234-3341