

District I  
1625 N. French Dr., Hobbs, NM 88240  
Phone: (575) 393-6161 Fax: (575) 393-0720  
District II  
811 S. First St., Artesia, NM 88210  
Phone: (575) 748-1283 Fax: (575) 748-9720  
District III  
1000 Rio Brazos Road, Aztec, NM 87410  
Phone: (505) 334-6178 Fax: (505) 334-6170  
District IV  
1220 S. St. Francis Dr., Santa Fe, NM 87505  
Phone: (505) 476-3460 Fax: (505) 476-3462

State of New Mexico  
Energy, Minerals & Natural Resources Department  
OIL CONSERVATION DIVISION  
1220 South St. Francis Dr.  
Santa Fe, NM 87505

HOBBS OCD

OCT 03 2014

RECEIVED

Form C-102  
Revised August 1, 2011  
Submit one copy to appropriate  
District Office

☐ AMENDED REPORT

WELL LOCATION AND ACREAGE DEDICATION PLAT

<sup>1</sup> API Number <b>30-025-42166</b>	<sup>2</sup> Pool Code <b>29270</b>	<sup>3</sup> Pool Name <b>FEATHERSTONE; BONE SPRING</b>	<b>East</b>
<sup>4</sup> Property Code <b>313760</b>	<sup>5</sup> Property Name <b>ISABEL 23 FEE FED COM</b>		<sup>6</sup> Well Number <b>1H</b>
<sup>7</sup> OGRID No. <b>6137</b>	<sup>8</sup> Operator Name <b>DEVON ENERGY PRODUCTION COMPANY, L.P.</b>		<sup>9</sup> Elevation <b>3673.3</b>

<sup>10</sup> Surface Location

UL or lot no.	Section	Township	Range	Lot Idn	Feet from the	North/South line	Feet from the	East/West line	County
<b>M</b>	<b>23</b>	<b>20 S</b>	<b>35 E</b>		<b>330</b>	<b>SOUTH</b>	<b>660</b>	<b>WEST</b>	<b>LEA</b>

<sup>11</sup> Bottom Hole Location If Different From Surface

UL or lot no.	Section	Township	Range	Lot Idn	Feet from the	North/South line	Feet from the	East/West line	County
<b>D</b>	<b>23</b>	<b>20 S</b>	<b>35 E</b>		<b>330</b>	<b>NORTH</b>	<b>660</b>	<b>WEST</b>	<b>LEA</b>

<sup>12</sup> Dedicated Acres	<sup>13</sup> Joint or Infill	<sup>14</sup> Consolidation Code	<sup>15</sup> Order No.
<b>160</b>			

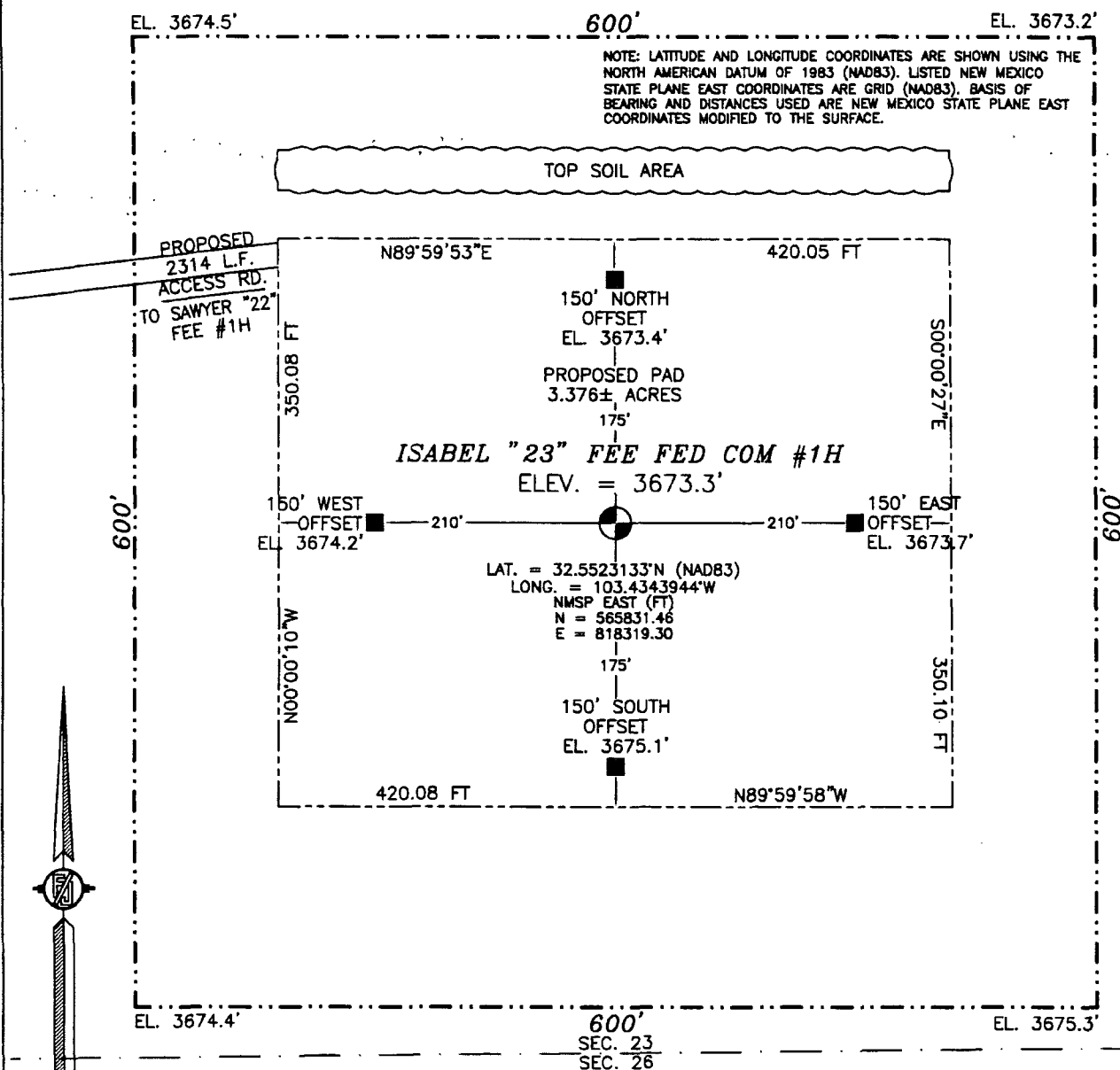
No allowable will be assigned to this completion until all interests have been consolidated or a non-standard unit has been approved by the division.

<p>N89°23'47"E 2644.08 FT</p> <p>660' 330'</p> <p>BOTTOM OF HOLE</p> <p>NW CORNER SEC. 23 LAT. = 32.5659335°N LONG. = 103.4365209°W</p> <p>NMSP EAST (FT) N = 570781.23 E = 817622.33</p> <p>W/4 CORNER SEC. 23 LAT. = 32.5586671°N LONG. = 103.4365279°W</p> <p>NMSP EAST (FT) N = 568137.56 E = 817642.42</p> <p>SW CORNER SEC. 23 LAT. = 32.5514071°N LONG. = 103.4365371°W</p> <p>NMSP EAST (FT) N = 565496.20 E = 817661.86</p> <p>660' 330'</p> <p>SURFACE LOCATION</p> <p>S89°25'22"W 2645.33 FT</p>		<p>N89°23'26"E 2643.57 FT</p> <p>N/4 CORNER SEC. 23 LAT. = 32.5659485°N LONG. = 103.4279404°W</p> <p>NMSP EAST (FT) N = 570809.07 E = 820265.80</p> <p>NE CORNER SEC. 23 LAT. = 32.5659637°N LONG. = 103.4193616°W</p> <p>NMSP EAST (FT) N = 570837.18 E = 822908.76</p> <p>E/4 CORNER SEC. 23 LAT. = 32.5586982°N LONG. = 103.4193688°W</p> <p>NMSP EAST (FT) N = 568193.81 E = 822929.24</p> <p>SE CORNER SEC. 23 LAT. = 32.5514256°N LONG. = 103.4193741°W</p> <p>NMSP EAST (FT) N = 565547.91 E = 822950.31</p> <p>S89°27'25"W 2644.30 FT</p>	
<p>NOTE: LATITUDE AND LONGITUDE COORDINATES ARE SHOWN USING THE NORTH AMERICAN DATUM OF 1983 (NAD83). LISTED NEW MEXICO STATE PLANE EAST COORDINATES ARE GRID (NAD83). BASIS OF BEARING AND DISTANCES USED ARE NEW MEXICO STATE PLANE EAST COORDINATES MODIFIED TO THE SURFACE.</p> <p>ISABEL "23" FEE FED COM #1H ELEV. = 3673.3' LAT. = 32.5523133°N (NAD83) LONG. = 103.4343944°W</p> <p>NMSP EAST (FT) N = 565831.46 E = 818319.30</p> <p>S/4 CORNER SEC. 23 LAT. = 32.5514188°N LONG. = 103.4279539°W</p> <p>NMSP EAST (FT) N = 565522.85 E = 820306.59</p>		<p><sup>17</sup> OPERATOR CERTIFICATION</p> <p>I hereby certify that the information contained herein is true and complete to the best of my knowledge and belief, and that this organization either owns a working interest or released mineral interest in the land including the proposed bottom hole location or has a right to drill this well at this location pursuant to a contract with an owner of such a mineral or working interest, or to a voluntary pooling agreement or a compulsory pooling order heretofore entered by the division.</p> <p><i>[Signature]</i> 7/26/2013</p> <p>Signature Date</p> <p>David H. Cook Regulatory Specialist</p> <p>Printed Name</p> <p>david.cook@dmv.com</p> <p>E-mail Address</p>	
<p><sup>18</sup> SURVEYOR CERTIFICATION</p> <p>I hereby certify that the well location shown on this plat was plotted from field notes of actual surveys made by me or under my supervision, and that the same is true and correct to the best of my belief.</p> <p>JULY 22, 2014</p> <p>Date of Survey</p> <p><i>[Signature]</i></p> <p>Signature and Seal of Professional Surveyor</p> <p>Certificate Number: 12797</p> <p>NEW MEXICO</p> <p>12797</p> <p>PLS 12797</p> <p>SURVEY NO. 1982</p>			

PP: 580 FSL & 660 FWL

OCT 09 2014

**SECTION 23, TOWNSHIP 20 SOUTH, RANGE 35 EAST, N.M.P.M.  
LEA COUNTY, STATE OF NEW MEXICO  
SITE MAP**



010 50 100 200

SCALE 1" = 100'

**DIRECTIONS TO LOCATION**

FROM MILE MARKER 19 ON STATE HWY 176 GOING EAST GO 0.3 MILES TO PAVED ROAD ON LEFT (NORTH) PEARSON ROAD TURN NORTH GO APPROX. 1.2 MILES PAVEMENT END GO APPROX. 0.3 MILES ROAD TURNS LEFT (NORTHEAST) FOLLOW ROAD GO APPROX. 4.0 MILES TO "Y" INTERSECTION STAY LEFT GO APPROX. 2.7 MILES TO "Y" INTERSECTION STAY LEFT GO APPROX. 0.4 MILES ROAD TURNS LEFT (WEST) GO WEST APPROX. 0.55 MILES TO LEASE ROAD LEFT (SOUTH) TURN SOUTH GO APPROX. 0.81 MILES THERE IS A PROPOSED WELL SITE ON LEFT (EAST) 200 FT. FROM THE NORTHEAST CORNER OF PROPOSED PAD IS A ROAD LATH WITH RED & WHITE FLAGGING FOLLOW ROAD LATH APPROX. 0.43 MILES TO ISABEL "23" FEE FED COM #1H

**DEVON ENERGY PRODUCTION COMPANY, L.P.  
ISABEL "23" FEE FED COM #1H  
LOCATED 330 FT. FROM THE SOUTH LINE  
AND 660 FT. FROM THE WEST LINE OF  
SECTION 23, TOWNSHIP 20 SOUTH,  
RANGE 35 EAST, N.M.P.M.  
LEA COUNTY, STATE OF NEW MEXICO**

**JULY 22, 2013**

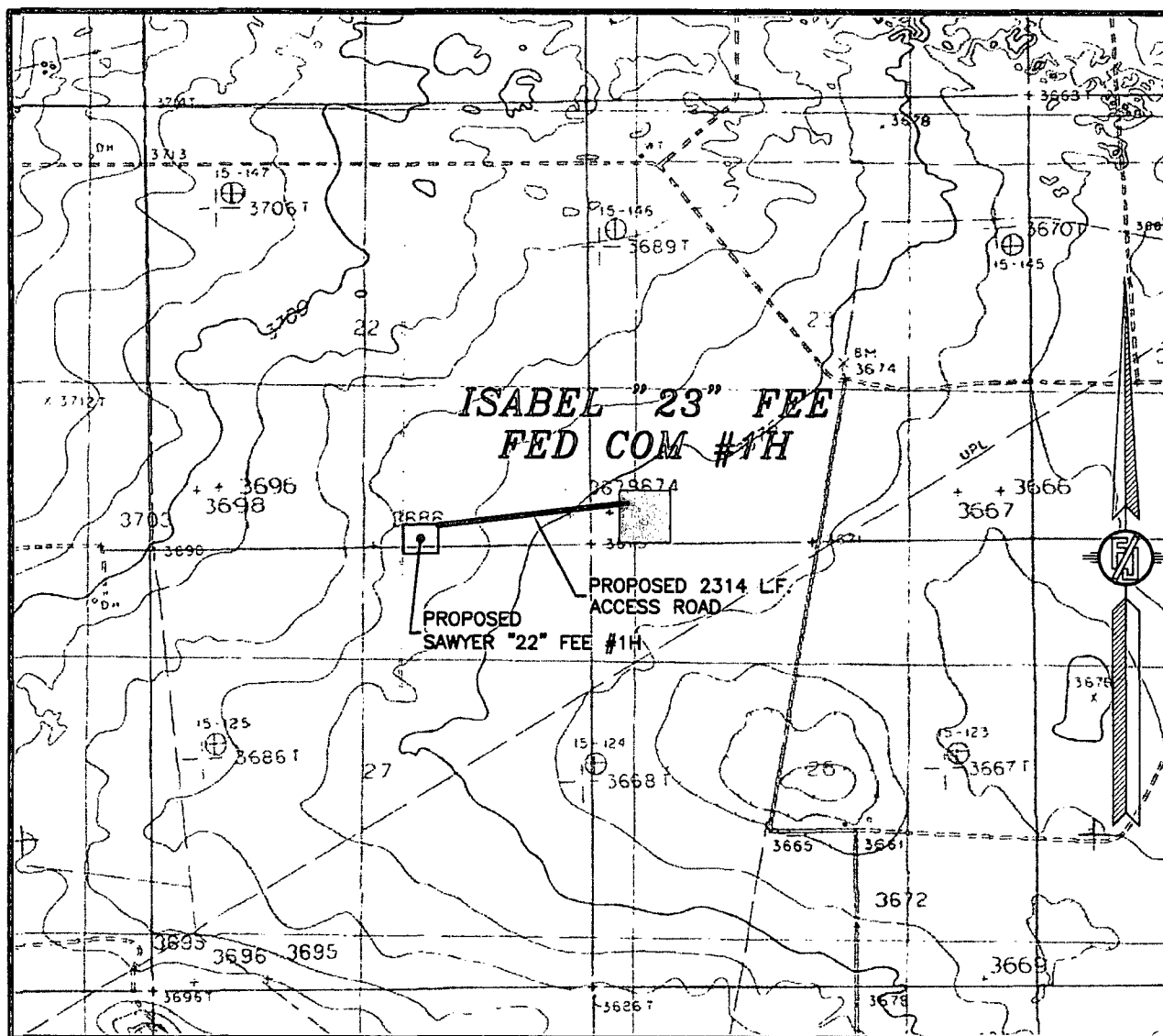
**SURVEY NO. 1982**

**MADRON SURVEYING, INC.**

301 SOUTH CANAL  
(575) 234-3341

**CARLSBAD, NEW MEXICO**

23, TOWNSHIP 20 SOUTH, RANGE 35 EAST, N.M.P.M.  
LEA COUNTY, STATE OF NEW MEXICO  
LOCATION VERIFICATION MAP



USGS QUAD MAP:  
MONUMENT SW

**NOT TO SCALE**

DEVON ENERGY PRODUCTION COMPANY, L.P.  
ISABEL "23" FEE FED COM #1H  
LOCATED 330 FT. FROM THE SOUTH LINE  
AND 660 FT. FROM THE WEST LINE OF  
SECTION 23, TOWNSHIP 20 SOUTH,  
RANGE 35 EAST, N.M.P.M.  
LEA COUNTY, STATE OF NEW MEXICO

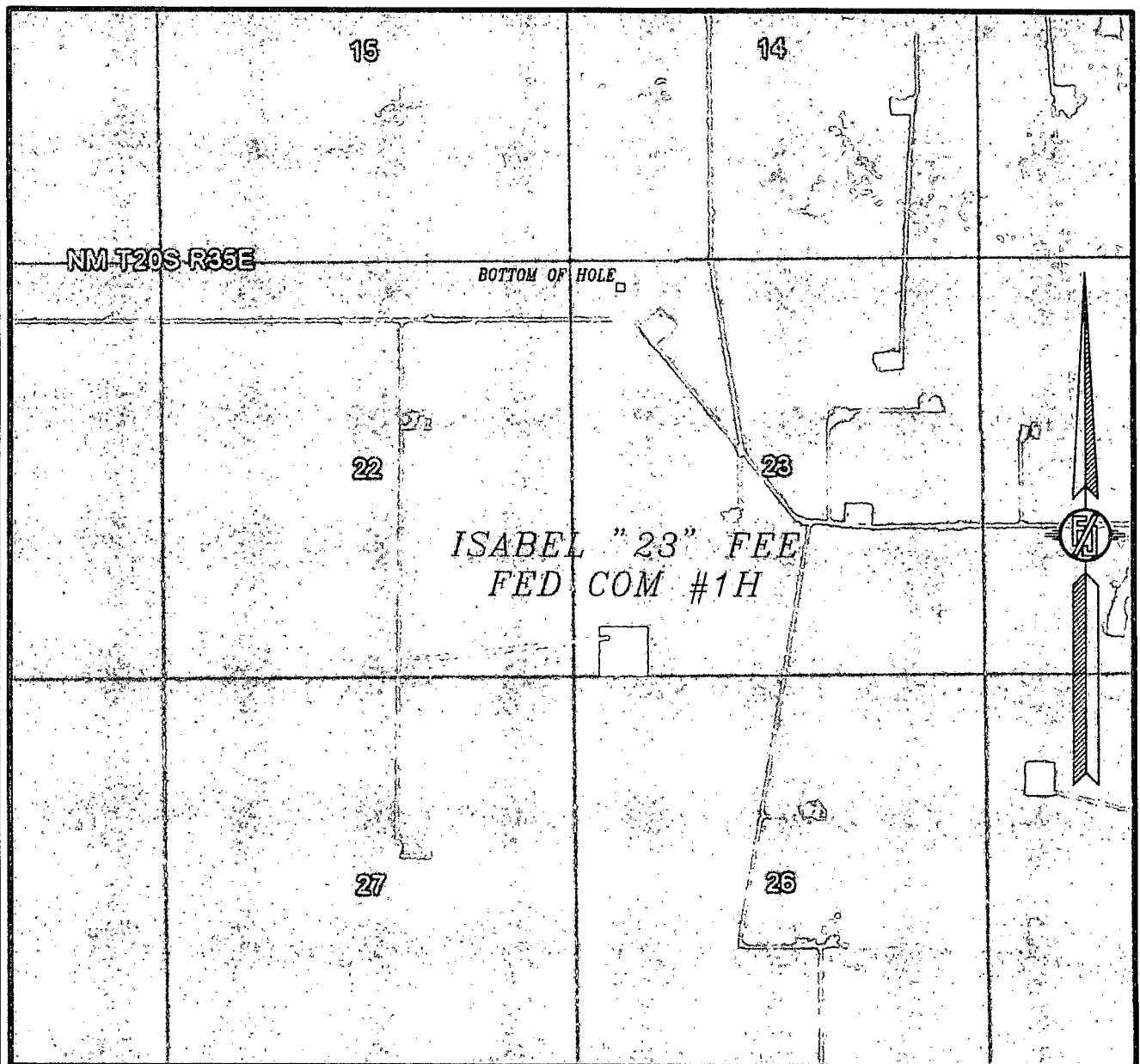
*JULY 22, 2013*

*SURVEY NO. 1982*

**MADRON SURVEYING, INC.** 301 SOUTH CANAL CARLSBAD, NEW MEXICO  
(575) 234-3341



SECTION 23, TOWNSHIP 20 SOUTH, RANGE 35 EAST, N.M.P.M.  
LEA COUNTY, STATE OF NEW MEXICO  
AERIAL PHOTO



NOT TO SCALE  
AERIAL PHOTO:  
GOOGLE EARTH  
MARCH 2012

DEVON ENERGY PRODUCTION COMPANY, L.P.  
ISABEL "23" FEE FED COM #1H  
LOCATED 330 FT. FROM THE SOUTH LINE  
AND 660 FT. FROM THE WEST LINE OF  
SECTION 23, TOWNSHIP 20 SOUTH,  
RANGE 35 EAST, N.M.P.M.  
LEA COUNTY, STATE OF NEW MEXICO

*JULY 22, 2013*

*SURVEY NO. 1982*

**MADRON SURVEYING, INC.** 301 SOUTH CANAL  
(575) 234-3341 CARLSBAD, NEW MEXICO

ISABEL 23 FEE FED COM 1H  
T20S - R35E

SHL to nearest lease line: 330 ft.  
SHL to nearest wellbore: 311 ft. S.  
SHL to BHL 4627 ft.  
BHL to nearest wellbore: 1450 ft. SW.

USA WEST MONUMENT 1 10 ft. E.  
UPLAND 23 FEDERAL CO 1 425 ft. E.  
WATKINS A GAS COM 1 2650 ft. W.  
WATKINS B GAS COM 1 1308 ft. E.\*

\*All distances are estimated.

35E

1 MILE

BHL

USA-WEST MONUMENT 1

UPLAND 23 FEDERAL CO #1

BYERS #2

WATKINS 'A' GAS COM 1

BEST GAS COM 1

BYERS 8605 JV-P 1

22

23

HELLER CO TRUST COM 1

WATKINS 'B' GAS COM 1

BYERS #1

BEST GAS COM 2

1 MILE

SHL

ISABEL 23 FED COM 1H

MANGO BRM STATE 1H

TANGERINE BRT STATE 1H

SIMS '27' STATE 1

27

SOUTHEAST LEA UNIT 3

26

SOUTHEAST LEA UNIT 1

SOUTHEAST L

ONE MILE RADIUS MAP

NEUHAUS '14' FEDERAL 2

STATE 1-

KATIE LEE 1

SIMS 13 STATE #

NEUHAUS 14 FEDERAL #4

NEUHAUS 14 FEDERAL #5

FEDERAL 'AG' COM 1

INGO '14' FEDERAL 1

14

NEUHAUS '14' FED 1

NEUHAUS '14' FEDERAL 3

DEVON

ISABEL 23 FEE FED COM 1H