

- 1 All Company and Contract personnel admitted on location must be trained by a qualified H2S safety instructor to the following:
 - A. Characteristics of H₂S
 - B. Physical effects and hazards
 - C. Principal and operation of H₂S detectors, warning system and briefing areas.
 - D. Evacuation procedure, routes and first aid.
 - E. Proper use of safety equipment & life support systems
 - F. Essential personnel meeting Medical Evaluation criteria will receive additional training on the proper use of 30 minute pressure demand air packs.
- 2 H₂S Detection and Alarm Systems:
 - A. H₂S sensors/detectors to be located on the drilling rig floor, in the base of the sub structure/cellar area, on the mud pits in the shale shaker area. Additional H₂S detectors may be placed as deemed necessary.
 - B. An audio alarm system will be installed on the derrick floor and in the top doghouse.
- 3 Windsock and/or wind streamers:
 - A. Windsock at mudpit area should be high enough to be visible.
 - B. Windsock on the rig floor and / or top doghouse should be high enough to be visible.
- 4 Condition Flags and Signs
 - A. Warning sign on access road to location.
 - B. Flags to be displayed on sign at entrance to location. Green flag indicates normal safe condition. Yellow flag indicates potential pressure and danger. Red flag indicates danger (H₂S present in dangerous concentration). Only H₂S trained and certified personnel admitted to location.
- 5 Well control equipment:
 - A. See exhibit "E-1"
- 6 Communication:
 - A. While working under masks chalkboards will be used for communication.
 - B. Hand signals will be used where chalk board is inappropriate.
 - C. Two way radio will be used to communicate off location in case of emergency help is required. In most cases cellular telephones will be available at most drilling foreman's trailer or living quarters.
- 7 Drillstem Testing:

No DSTs or cores are planned at this time.
- 8 Drilling contractor supervisor will be required to be familiar with the effects H₂S has on tubular goods and other mechanical equipment.
- 9 If H₂S is encountered, mud system will be altered if necessary to maintain control of formation. A mud gas separator will be brought into service along with H₂S scavengers if necessary.

H₂S Contingency Plan
Colibri Federal 23H
Cimarex Energy Co.
UL: B, Sec. 10, 23S, 32E
Lea Co., NM

Emergency Procedures

In the event of a release of gas containing H₂S, the first responder(s) must:

- « Isolate the area and prevent entry by other persons into the 100 ppm ROE.
- « Evacuate any public places encompassed by the 100 ppm ROE.
- « Be equipped with H₂S monitors and air packs in order to control the release.
- « Use the "buddy system" to ensure no injuries occur during the response.
- « Take precautions to avoid personal injury during this operation.
- « Contact operator and/or local officials to aid in operation. See list of phone numbers attached.
- « Have received training in the:
 - Detection of H₂S, and
 - Measures for protection against the gas,
 - Equipment used for protection and emergency response.

Ignition of Gas Source

Should control of the well be considered lost and ignition considered, take care to protect against exposure to Sulfur Dioxide (SO₂). Intentional ignition must be coordinated with the NMOCD and local officials. Additionally, the NM State Police may become involved. NM State Police shall be the Incident Command on scene of any major release. Take care to protect downwind whenever there is an ignition of the gas.

Characteristics of H₂S and SO₂

Please see attached International Chemical Safety Cards.

Contacting Authorities

Cimarex Energy Co. of Colorado's personnel must liaise with local and state agencies to ensure a proper response to a major release. Additionally, the OCD must be notified of the release as soon as possible but no later than 4 hours. Agencies will ask for information such as type and volume of release, wind direction, location of release, etc. Be prepared with all information available including directions to site. The following call list of essential and potential responders has been prepared for use during a release. Cimarex Energy Co. of Colorado's response must be in coordination with the State of New Mexico's "Hazardous Materials Emergency Response Plan" (HMER).

H₂S Contingency Plan Emergency Contacts

Colibri Federal 23H

Cimarex Energy Co.

UL: B, Sec. 10, 23S, 32E

Lea Co., NM

Company Office			
Cimarex Energy Co. of Colorado		800-969-4789	
Co. Office and After-Hours Menu			
Key Personnel			
Name	Title	Office	Mobile
Larry Seigrist	Drilling Manager	432-620-1934	580-243-8485
Doug McQuitty	Drilling Superintendent	432-620-1933	806-640-2605
Scott Lucas	Drilling Superintendent	432-620-1989	432-894-5572
Roy Shirley	Construction Superintendent		432-634-2136
Artesia			
Ambulance		911	
State Police		575-746-2703	
City Police		575-746-2703	
Sheriff's Office		575-746-9888	
Fire Department		575-746-2701	
Local Emergency Planning Committee		575-746-2122	
New Mexico Oil Conservation Division		575-748-1283	
Carlsbad			
Ambulance		911	
State Police		575-885-3137	
City Police		575-885-2111	
Sheriff's Office		575-887-7551	
Fire Department		575-887-3798	
Local Emergency Planning Committee		575-887-6544	
US Bureau of Land Management		575-887-6544	
Santa Fe			
New Mexico Emergency Response Commission (Santa Fe)		505-476-9600	
New Mexico Emergency Response Commission (Santa Fe) 24 Hrs		505-827-9126	
New Mexico State Emergency Operations Center		505-476-9635	
National			
National Emergency Response Center (Washington, D.C.)		800-424-8802	
Medical			
Flight for Life - 4000 24th St.; Lubbock, TX		806-743-9911	
Aerocare - R3, Box 49F; Lubbock, TX		806-747-8923	
Med Flight Air Amb - 2301 Yale Blvd S.E., #D3; Albuquerque, NM		505-842-4433	
SB Air Med Service - 2505 Clark Carr Loop S.E.; Albuquerque, NM		505-842-4949	
Other			
Boots & Coots IWC		800-256-9688	or 281-931-8884
Cudd Pressure Control		432-699-0139	or 432-563-3356
Halliburton		575-746-2757	
B.J. Services		575-746-3569	

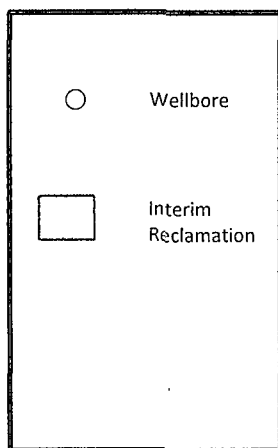
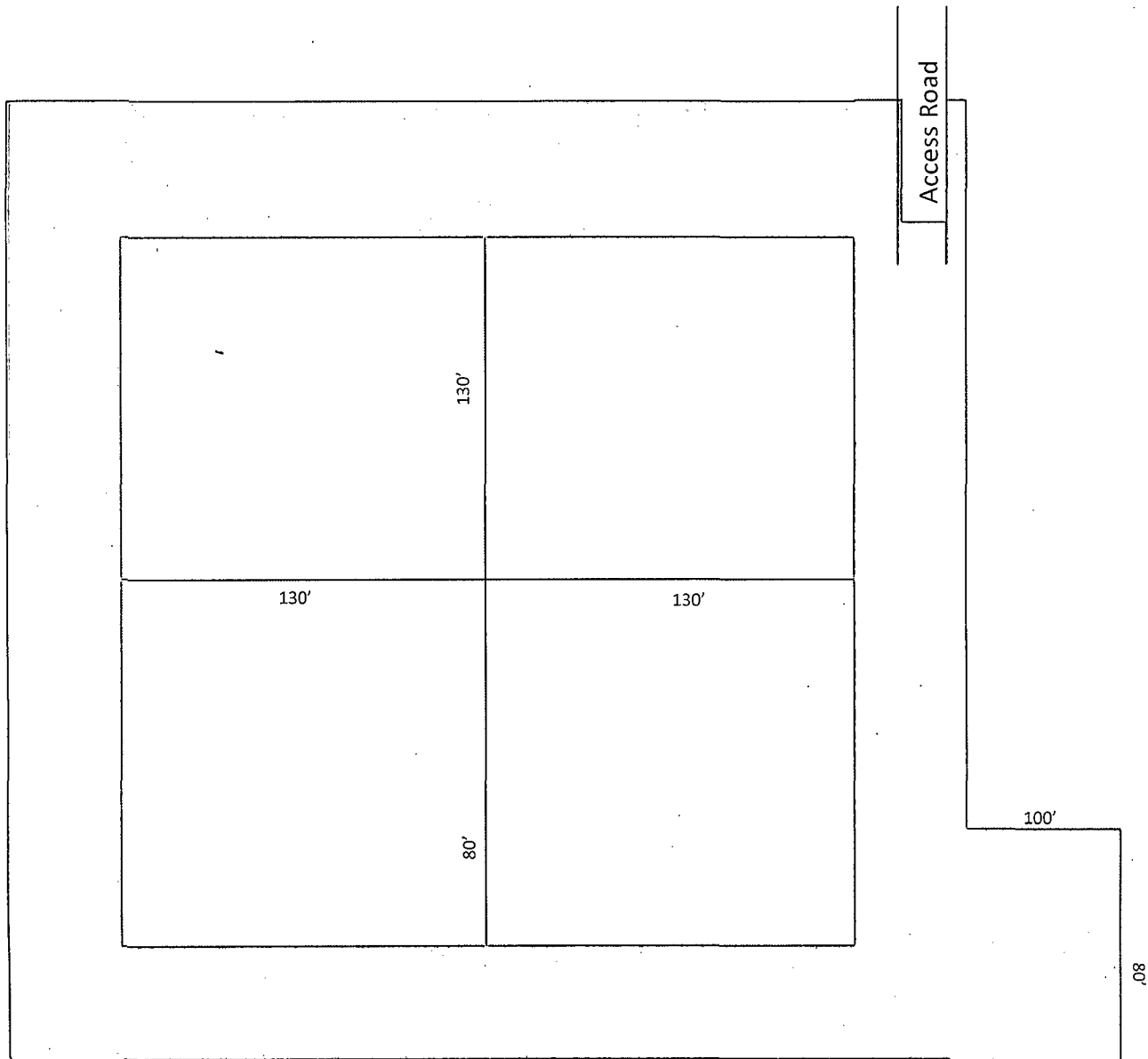


Exhibit D-1
Interim Reclamation Diagram
Colibri Federal 23H
Cimarex Energy Co.
10-23S-32E
SHL 230 FNL & 2200 FEL
BHL 330 FSL & 2200 FEL
Lea County, NM

OCT 15 2014

Surface Use Plan
Colibri Federal #23H
Cimarex Energy Co.
UL: B, Sec. 10, 23S, 32E
Lea Co., NM

The following surface use plan of operations will be followed and carried out once the APD is approved. No other disturbance will be created other than what is submitted in this surface use plan without approval. If any other disturbance is needed after the APD is approved, a BLM approved sundry notice or right of way application will be submitted for approval prior to any new surface disturbance.

1.Existing Roads:

Area access roads and general road maps:

- Exhibit B: General Highway Map
- Exhibit C: USGS Topographic Map
- Exhibit C-1: Public Access Road Map
- Exhibit C-2: Existing and proposed access roads plat

The maximum width of the driving surface will be 14.' The road will be crowned and ditched with a 2% slope from the tip of the crown to the edge of the driving surface. The ditches will be 1' deep with 3:1 slopes. The driving surface will be made of 6" rolled and compacted caliche.

Existing access road route to the proposed project is depicted on the public access point map if applicable. Improvements to the driving surface will be done where necessary. No new surface disturbance will be done, unless otherwise noted in the New or Reconstructed Access Roads section of the surface use plan.

BEGINNING AT THE INTERSECTION OF JAL HIGHWAY/ HWY 128 AND AN EXISTING ROAD TO THE NORTHEAST LOCATED IN THE SE 1/4 OF SECTION 1, T24S, R 31E, N.M.P.M. PROCEED IN A NORTHEASTERLY DIRECTION APPROXIMATELY 5.6 MILES TO THE JUNCTION OF THIS ROAD AND AN EXISTING ROAD TO THE NORTHWEST; TURN LEFT AND PROCEED IN A NORTHWESTERLY DIRECTION APPROXIMATELY 1.4 MILES TO THE JUNCTION OF THIS ROAD AND AN EXISTING ROAD TO THE NORTHEAST; TURN RIGHT AND PROCEED IN A NORTHEASTERLY, THEN NORTHERLY DIRECTION APPROXIMATELY 1.5 MILES TO THE BEGINNING OF THE PROPOSED ACCESS FOR THE COLIBRI FEDERAL #20H TO THE NORTHWEST; FOLLOW ROAD FLAGS IN A NORTHWESTERLY, THEN WESTERLY DIRECTION APPROXIMATELY 5,245' TO THE BEGINNING OF THE PROPOSED ACCESS ROAD TO THE SOUTH; FOLLOW ROAD FLAGS IN A SOUTHERLY DIRECTION APPROXIMATELY 15' TO THE PROPOSED LOCATION.

If existing roads are used, the operator will improve or maintain existing roads in a condition the same as or better than before the operations began. The operator will repair pot holes, etc. All existing structures on the entire access route such as cattle guards, other range improvement projects, culverts, etc. will be properly repaired or replaced if they are damaged or have deteriorated beyond practical use.

The operator will prevent and abate fugitive dust as needed, whether created by vehicular traffic, equipment operations, or other events. The operator will obtain written BLM approval prior to the application of surfactants, binding agents, or other dust suppression chemicals on the roadways.

2. New or Reconstructed Access Roads:

A new road will be constructed for this project.

Cimarex Energy plans to construct 5613.33' of off-lease access road to service the well. The proposed access road does cross lease boundaries, a right of way grant will be submitted to and obtained from the BLM.

The maximum width of the driving surface will be 14'. The road will be crowned and ditched with a 2% slope from the tip of the crown to the edge of the driving surface. The ditches will be 1' deep with 3:1 slopes. The driving surface will be made of 6" rolled and compacted caliche.

Proposed and existing access road route to the proposed wellsite is depicted on Exhibit C-2. Improvements to the driving surface will be done where necessary. No new surface disturbance will be done without prior approval from the BLM.

The operator will prevent and abate fugitive dust as needed, whether created by vehicular traffic, equipment operations, or other events.

3. Planned Electric Line:

No new electric lines are planned.

4. Location of Existing Well in a One-Mile Radius -Exhibit A:

- Water Wells - None known
- Disposal Wells - None known
- Drilling Wells - None known
- Producing Wells - As shown on Exhibit A
- Abandoned Wells - As shown on Exhibit A