

OCT 17 2014

District I
1625 N. French Dr., Hobbs, NM 88240
Phone: (575) 393-6161 Fax: (575) 393-0720

District II
811 S. First St., Artesia, NM 88210
Phone: (575) 748-1283 Fax: (575) 748-9720

District III
1000 Rio Brazos Road, Aztec, NM 87410
Phone: (505) 334-6178 Fax: (505) 334-6170

District IV
1220 S. St. Francis Dr., Santa Fe, NM 87505
Phone: (505) 476-3460 Fax: (505) 476-3462

State of New Mexico
Energy, Minerals & Natural Resources Department **RECEIVED**
OIL CONSERVATION DIVISION
1220 South St. Francis Dr.
Santa Fe, NM 87505

Form C-102
Revised August 1, 2011
Submit one copy to appropriate
District Office

☐ AMENDED REPORT

WELL LOCATION AND ACREAGE DEDICATION PLAT

¹ API Number 30-025-42191	² Pool Code 96660	³ Pool Name BERRY; BONE SPRING, SOUTH
⁴ Property Code 313803	⁵ Property Name MONK "21" STATE	⁶ Well Number 2H
⁷ OGRID No. 6137	⁸ Operator Name DEVON ENERGY PRODUCTION COMPANY, L.P.	⁹ Elevation 3722.7

¹⁰ Surface Location

UL or lot no.	Section	Township	Range	Lot Idn	Feet from the	North/South line	Feet from the	East/West line	County
B	21	21 S	34 E		200	NORTH	2080	EAST	LEA

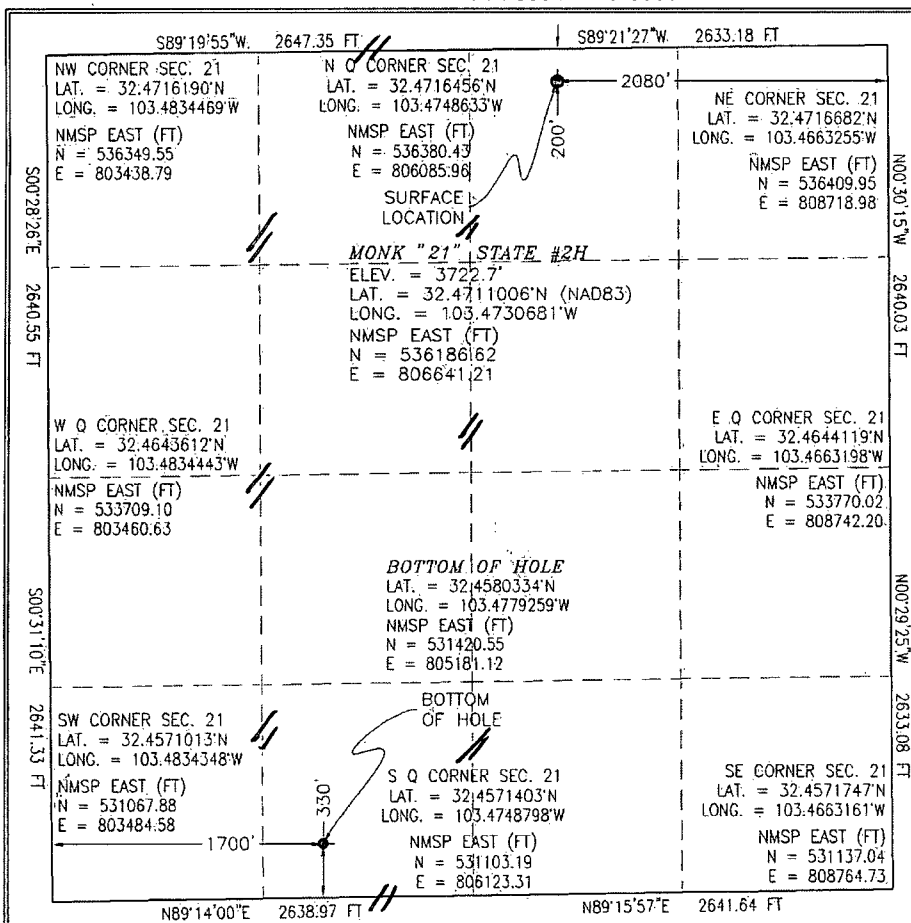
¹¹ Bottom Hole Location If Different From Surface

UL or lot no.	Section	Township	Range	Lot Idn	Feet from the	North/South line	Feet from the	East/West line	County
N	21	21 S	34 E		330	SOUTH	1700	WEST	LEA

¹² Dedicated Acres 160	¹³ Joint or Infill	¹⁴ Consolidation Code	¹⁵ Order No.
--------------------------------------	-------------------------------	----------------------------------	-------------------------

No allowable will be assigned to this completion until all interests have been consolidated or a non-standard unit has been approved by the division.

PP: 660 FNL & 3580 FEL

¹⁷ OPERATOR CERTIFICATION

I hereby certify that the information contained herein is true and complete to the best of my knowledge and belief, and that this organization either owns a working interest or unleased mineral interest in the land including the proposed bottom hole location or has a right to drill this well at this location pursuant to a contract with an owner of such a mineral or working interest, or to a voluntary pooling agreement or a compulsory pooling order heretofore entered by the division.

Signature: *[Signature]* Date: 10/16/2014

David H. Cook Regulatory Specialist
Printed Name

david.cook@dvn.com
E-mail Address

¹⁸ SURVEYOR CERTIFICATION

I hereby certify that the well location shown on this plat was plotted from field notes of actual surveys made by me or under my supervision, and that the same is true and correct to the best of my belief.

JANUARY 23, 2014

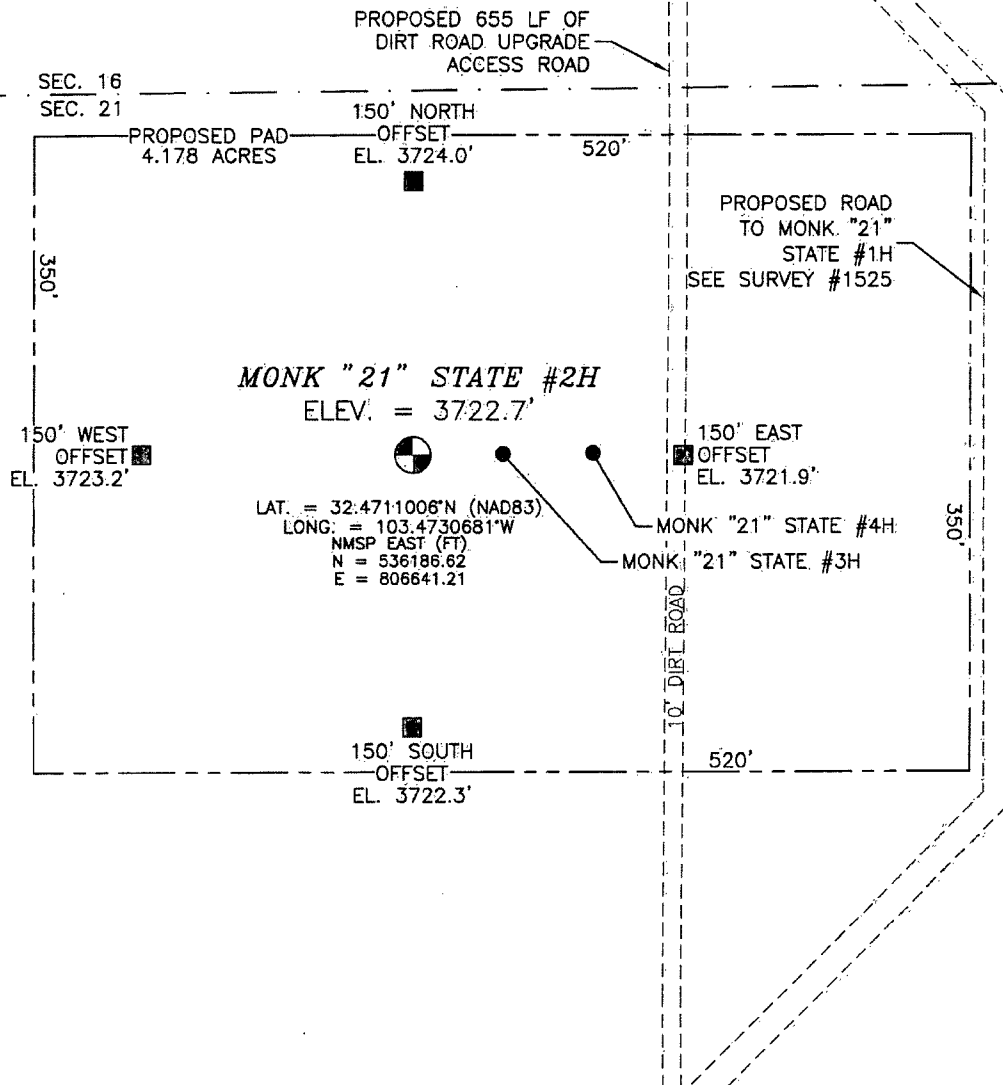
Date of Survey

Signature and Seal of Professional Surveyor
Certificate Number: 12797

SURVEY NO. 1526

OCT 20 2014

SECTION 21, TOWNSHIP 21 SOUTH, RANGE 34 EAST, N.M.P.M.
LEA COUNTY, STATE OF NEW MEXICO



010 50 100 200

SCALE 1" = 100'

DIRECTIONS TO LOCATION

FROM US HIGHWAY 62-180 AND STATE HIGHWAY 176 GO
EAST-SOUTHEAST ON STATE HIGHWAY 176 16.8 MILES, TURN RIGHT
ON CALICHE ROAD AND GO SOUTHWEST 0.9 MILES, BEND LEFT AND
GO SOUTH 0.5 MILES, BEND RIGHT AND GO SOUTHWEST 0.38 MILES,
BEND LEFT AND GO SOUTHEAST 0.25 MILES, TURN RIGHT AND GO
WEST 0.3 MILES, TURN LEFT AND GO SOUTH 655 FT. TO THE NORTH
EDGE OF PROPOSED PAD FOR THIS LOCATION.

DEVON ENERGY PRODUCTION COMPANY, L.P.

MONK "21" STATE #2H

LOCATED 200 FT. FROM THE NORTH LINE
AND 2080 FT. FROM THE EAST LINE OF
SECTION 21, TOWNSHIP 21 SOUTH,
RANGE 34 EAST, N.M.P.M.
LEA COUNTY, STATE OF NEW MEXICO

JANUARY 23, 2013

SURVEY NO. 1526

MADRON SURVEYING, INC. 1301 SOUTH CANAL
(575) 234-3341

CARLSBAD, NEW MEXICO

Topographic map showing the proposed 655 LF of dirt road upgrade access road. The map includes contour lines, a grid, and labels for 'MONK STATE #2H', 'WILSON', 'FIELD', 'Rainy Tank', and 'Drill Hole'. A north arrow is present on the right side.

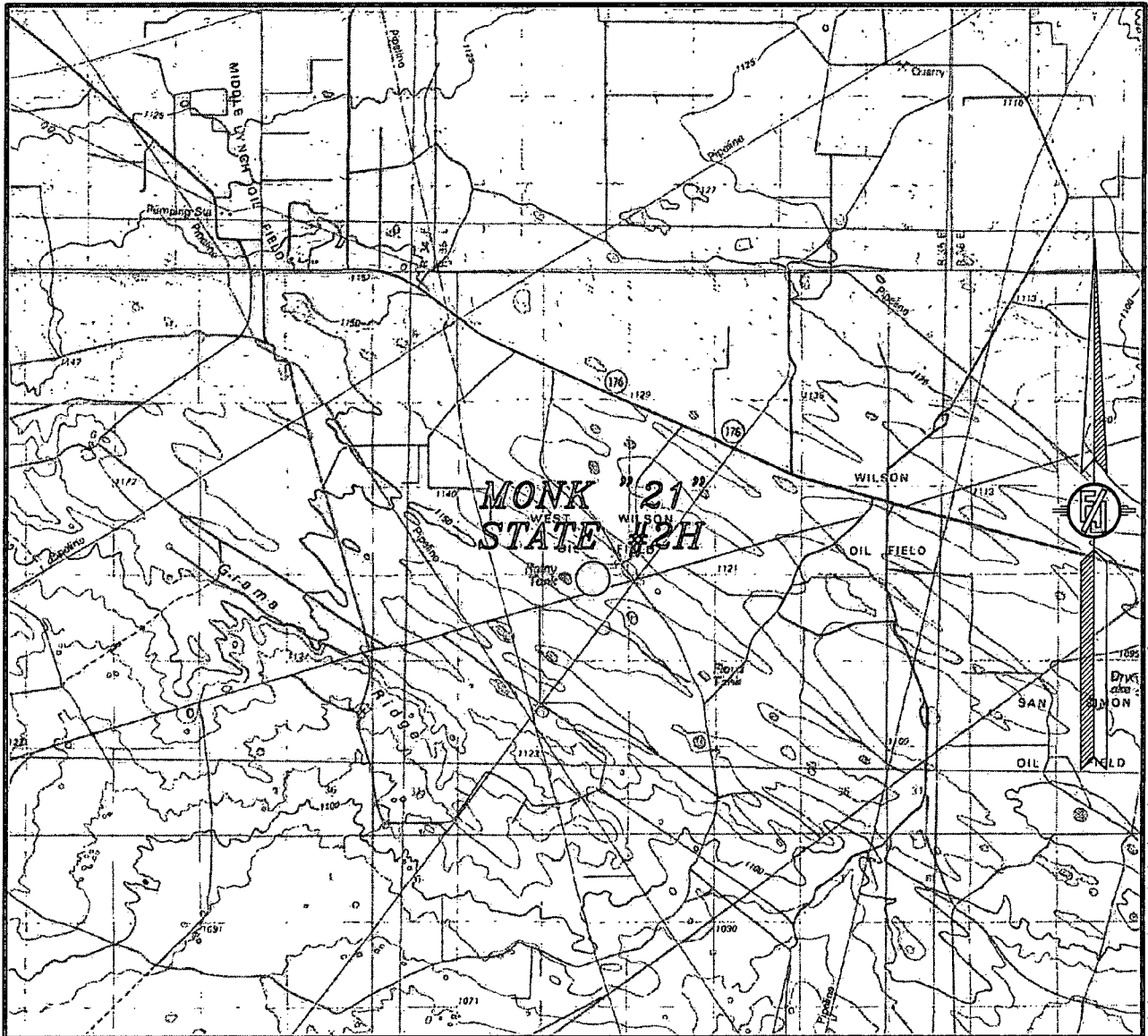
NOT TO SCALE

LOCATED 200 FT. FROM THE "NORTH LINE"
AND 2080 FT. FROM THE EAST LINE OF
SECTION 21, TOWNSHIP 21 SOUTH,
RANGE 34 EAST, N.M.P.M.
LEA COUNTY, STATE OF NEW MEXICO

SURVEY NO. 1526

MADRON SURVEYING, INC. 301 SOUTH CANAL CARLSBAD, NEW MEXICO
(575) 234-3341

SECTION 21, TOWNSHIP 21 SOUTH, RANGE 34 EAST, N.M.P.M.
LEA COUNTY, STATE OF NEW MEXICO
VICINITY MAP



NOT TO SCALE

DEVON ENERGY PRODUCTION COMPANY, L.P.

MONK "21" STATE #2H

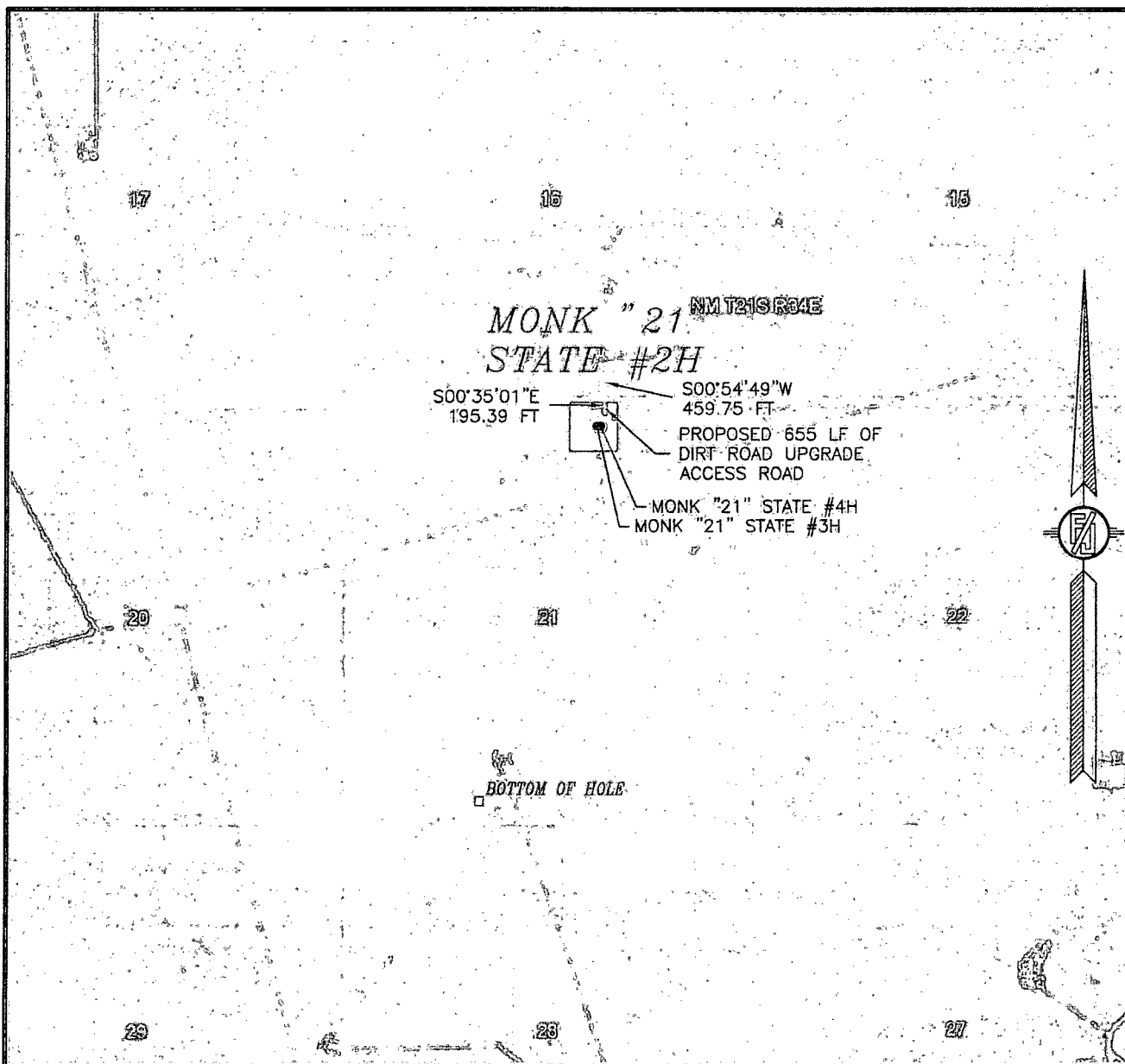
LOCATED 200 FT. FROM THE NORTH LINE
AND 2080 FT. FROM THE EAST LINE OF
SECTION 21, TOWNSHIP 21 SOUTH,
RANGE 34 EAST, N.M.P.M.
LEA COUNTY, STATE OF NEW MEXICO

JANUARY 23, 2013

SURVEY NO. 1526

MADRON SURVEYING, INC. 301 SOUTH CANAL (575) 234-3341 CARLSBAD, NEW MEXICO

SECTION 21, TOWNSHIP 21 SOUTH, RANGE 34 EAST, N.M.P.M.
LEA COUNTY, STATE OF NEW MEXICO
AERIAL PHOTO



NOT TO SCALE
AERIAL PHOTO:
GOOGLE EARTH
MARCH 2012

DEVON ENERGY PRODUCTION COMPANY, L.P.

MONK "21" STATE #2H

LOCATED 200 FT. FROM THE NORTH LINE
AND 2080 FT. FROM THE EAST LINE OF
SECTION 21, TOWNSHIP 21 SOUTH,
RANGE 34 EAST, N.M.P.M.
LEA COUNTY, STATE OF NEW MEXICO

JANUARY 23, 2013

SURVEY NO. 1526

MADRON SURVEYING, INC.

301 SOUTH CANAL
(575) 234-3341

CARLSBAD, NEW MEXICO