

District I
1625 N. French Dr., Hobbs, NM 88240
Phone: (505) 393-6161 Fax: (505) 393-0720
District II
811 S. First St., Artesia, NM 88210
Phone: (505) 748-1283 Fax: (505) 748-9720
District III
1000 Rio Brazos Road, Aztec, NM 87410
Phone: (505) 334-6178 Fax: (505) 334-6170
District IV
1220 S. St. Francis Dr., Santa Fe, NM 87505
Phone: (505) 476-3460 Fax: (505) 476-3462

State of New Mexico
Energy, Minerals & Natural Resources Department
OIL CONSERVATION DIVISION
1220 South St. Francis Dr.
Santa Fe, NM 87505

OCT 17 2014

RECEIVED

Form C-102
Revised August 1, 2011
Submit one copy to appropriate
District Office

☐ AMENDED REPORT

WELL LOCATION AND ACREAGE DEDICATION PLAT

¹ API Number 30-025-42193	² Pool Code 96660	³ Pool Name BERRY, BONE SPRING, SOUTH
⁴ Property Code 313803	⁵ Property Name MONK "21" STATE	⁶ Well Number 4H
⁷ OGRID No. 6137	⁸ Operator Name DEVON ENERGY PRODUCTION COMPANY, L.P.	⁹ Elevation 3723.1

¹⁰ Surface Location

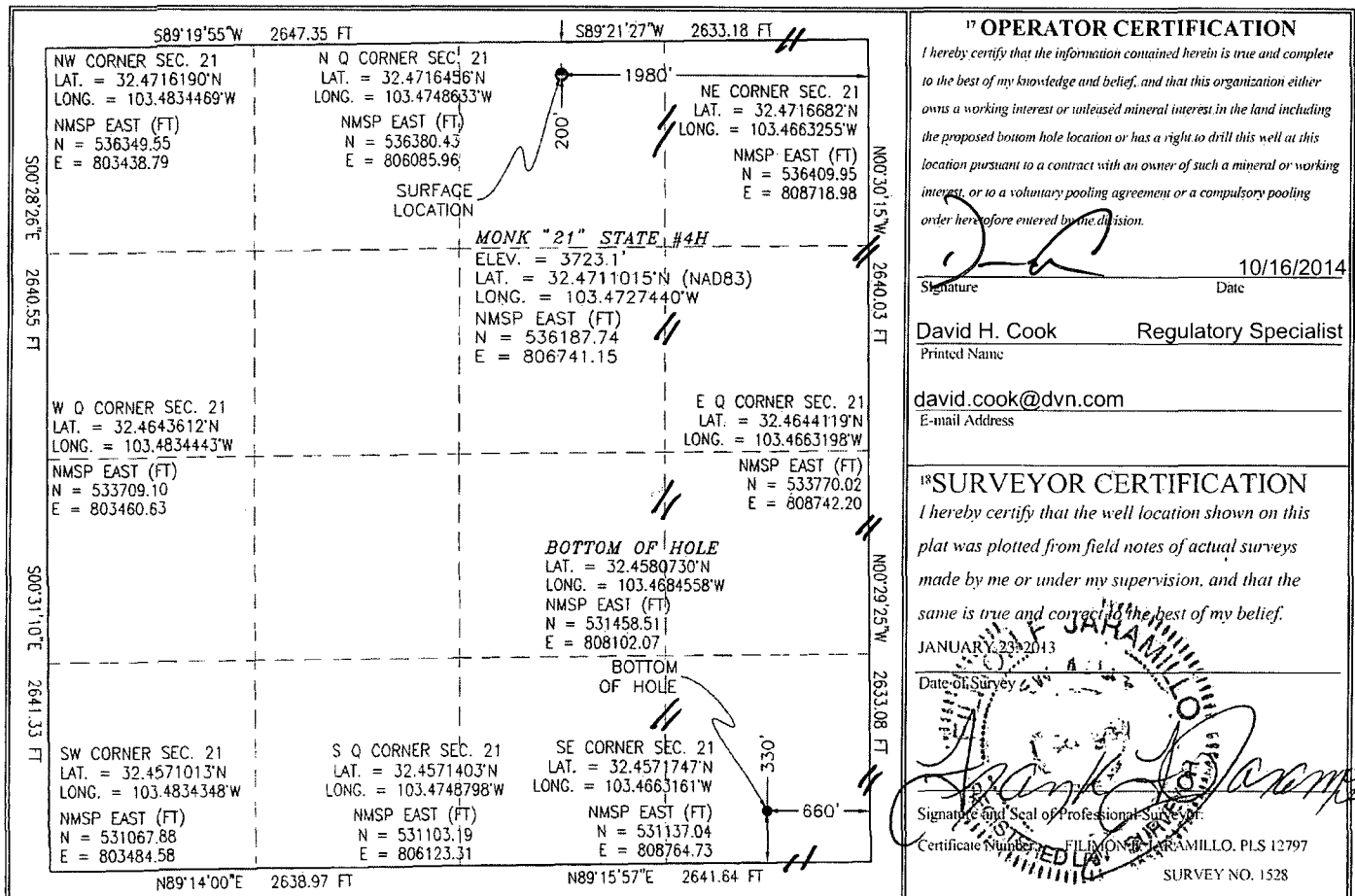
UL or lot no.	Section	Township	Range	Lot Idn	Feet from the	North/South line	Feet from the	East/West line	County
B	21	21 S	34 E		200	NORTH	1980	EAST	LEA

¹¹ Bottom Hole Location If Different From Surface

UL or lot no.	Section	Township	Range	Lot Idn	Feet from the	North/South line	Feet from the	East/West line	County
P	21	21 S	34 E		330	SOUTH	660	EAST	LEA
¹² Dedicated Acres 160	¹³ Joint or Infill	¹⁴ Consolidation Code	¹⁵ Order No.						

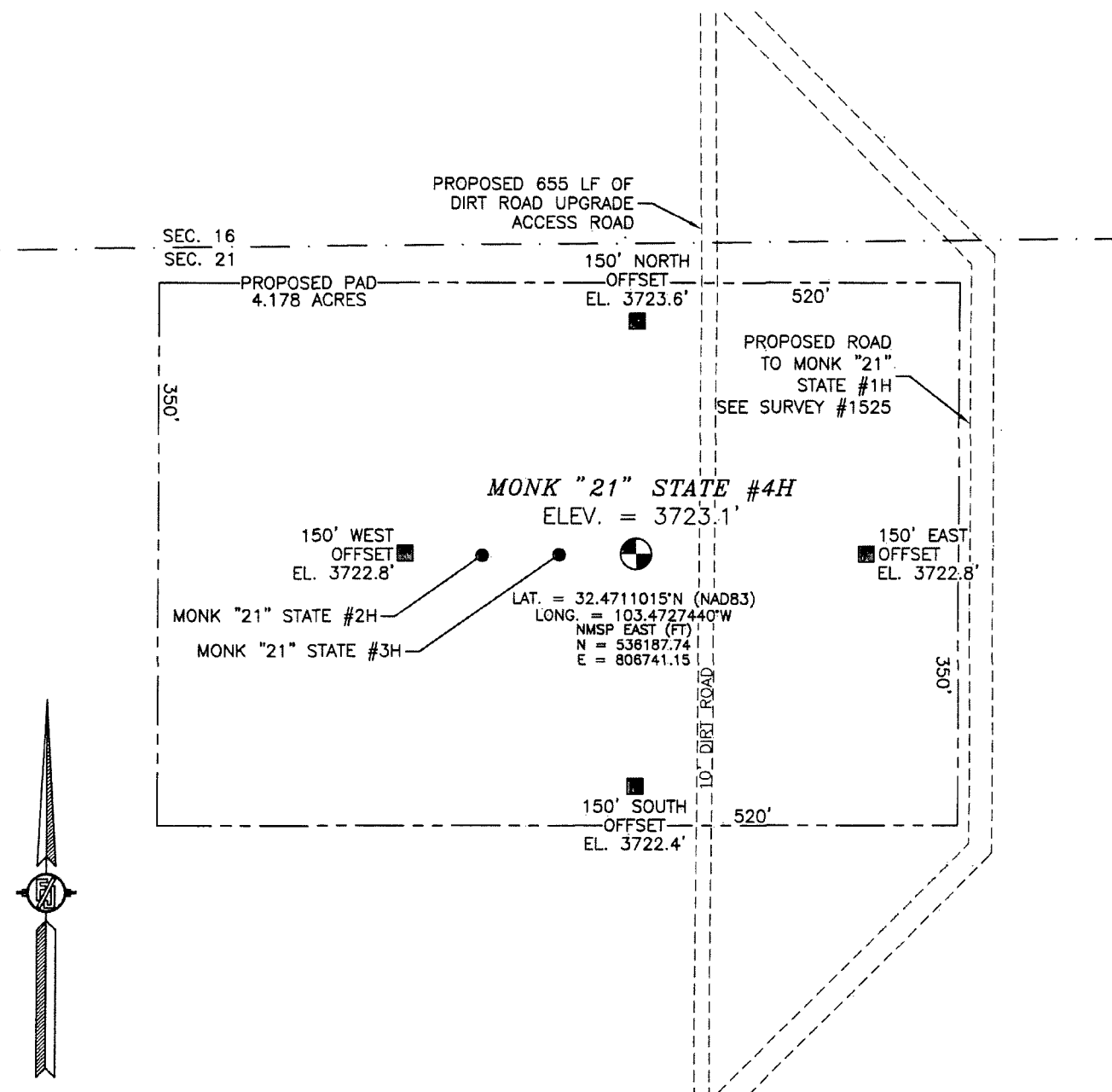
No allowable will be assigned to this completion until all interests have been consolidated or a non-standard unit has been approved by the division.

PP: 660 FNL & 660 FEL



OCT 20 2014

SECTION 21, TOWNSHIP 21 SOUTH, RANGE 34 EAST, N.M.P.M.
LEA COUNTY, STATE OF NEW MEXICO



0 10 50 100 200

SCALE 1" = 100'

DIRECTIONS TO LOCATION

FROM US HIGHWAY 62-180 AND STATE HIGHWAY 176 GO
EAST-SOUTHEAST ON STATE HIGHWAY 176 16.8 MILES, TURN RIGHT
ON CALICHE ROAD AND GO SOUTHWEST 0.9 MILES, BEND LEFT AND
GO SOUTH 0.5 MILES, BEND RIGHT AND GO SOUTHWEST 0.38 MILES,
BEND LEFT AND GO SOUTHEAST 0.25 MILES, TURN RIGHT AND GO
WEST 0.3 MILES, TURN LEFT AND GO SOUTH 855 FT TO THE NORTH
EDGE OF PROPOSED PAD FOR THIS LOCATION.

DEVON ENERGY PRODUCTION COMPANY, L.P.

MONK "21" STATE #4H

LOCATED 200 FT. FROM THE NORTH LINE
AND 1980 FT. FROM THE EAST LINE OF
SECTION 21, TOWNSHIP 21 SOUTH,
RANGE 34 EAST, N.M.P.M.
LEA COUNTY, STATE OF NEW MEXICO

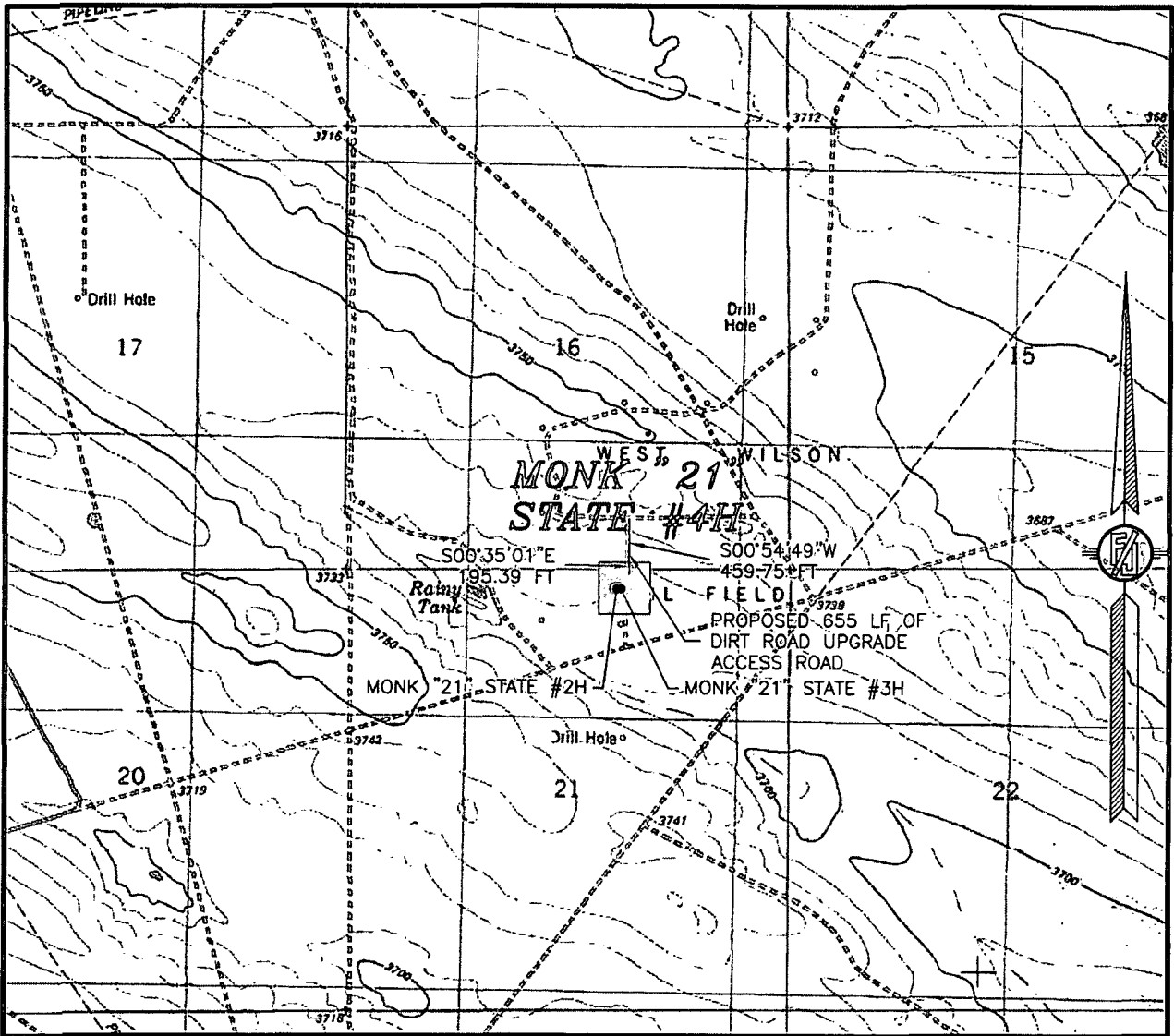
JANUARY 23, 2013

SURVEY NO. 1528

MADRON SURVEYING, INC. 301 SOUTH CANAL
(575) 234-3341

CARLSBAD, NEW MEXICO

21, TOWNSHIP 21 SOUTH, RANGE 34 EAST, N.M.P.M.
LEA COUNTY, STATE OF NEW MEXICO
LOCATION VERIFICATION MAP



USGS QUAD MAP:
SAN SIMON RANCH

NOT TO SCALE

DEVON ENERGY PRODUCTION COMPANY, L.P.

MONK "21" STATE #4H

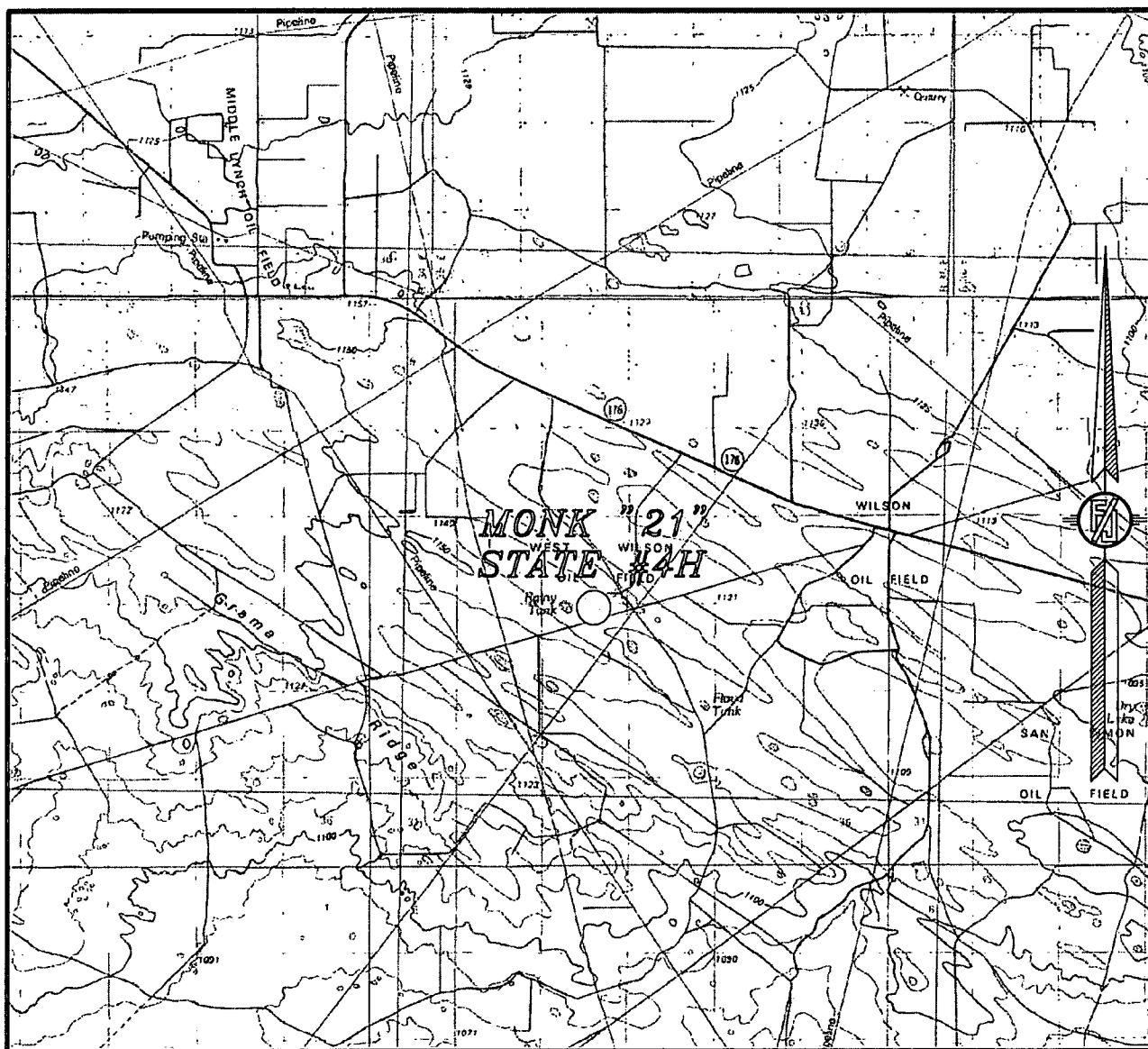
LOCATED 200 FT. FROM THE "NORTH LINE"
AND 1980 FT. FROM THE EAST LINE OF
SECTION 21, TOWNSHIP 21 SOUTH,
RANGE 34 EAST, N.M.P.M.
LEA COUNTY, STATE OF NEW MEXICO

JANUARY 23, 2013

SURVEY NO. 1528.

MADRON SURVEYING, INC. 301 SOUTH CANAL CARLSBAD, NEW MEXICO
(575) 234-3341

SECTION 21, TOWNSHIP 21 SOUTH, RANGE 34 EAST, N.M.P.M.
LEA COUNTY, STATE OF NEW MEXICO
VICINITY MAP



NOT TO SCALE

DEVON ENERGY PRODUCTION COMPANY, L.P.

MONK "21" STATE #4H

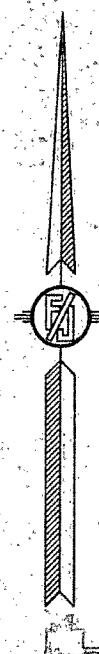
LOCATED 200 FT. FROM THE NORTH LINE
AND 1980 FT. FROM THE EAST LINE OF
SECTION 21, TOWNSHIP 21 SOUTH,
RANGE 34 EAST, N.M.P.M.
LEA COUNTY, STATE OF NEW MEXICO

JANUARY 23, 2013

SURVEY NO. 1528

MADRON SURVEYING, INC. 301 SOUTH CANAL (575) 234-3341 CARLSBAD, NEW MEXICO

AERIAL PHOTO



DEVON ENERGY PRODUCTION COMPANY, L.P.

LOCATED 200 FT. FROM THE "NORTH LINE"
AND 1980 FT. FROM THE EAST LINE OF
SECTION 21, TOWNSHIP 21 SOUTH,
RANGE 34 EAST, N.M.P.M.
LEA COUNTY, STATE OF NEW MEXICO

SURVEY NO. 1528

MADRON SURVEYING, INC. 301 SOUTH CANAL (575) 234-3341 CARLSBAD, NEW MEXICO

301 SOUTH CANAL
(575) 234-3341