

DISTRICT I  
1625 N. FRENCH DR., HOBBS, NM 88240  
Phone: (505) 393-8161 Fax: (505) 393-0720

DISTRICT II  
1301 W. GRAND AVENUE, ARTESIA, NM 88210  
Phone: (505) 748-1283 Fax: (505) 748-9720

DISTRICT III  
1000 RIO BRAZOS RD., AZTEC, NM 87410  
Phone: (505) 334-6178 Fax: (505) 334-6170

DISTRICT IV  
11865 S. ST. FRANCIS DR., SANTA FE, NM 87505  
Phone: (505) 476-3460 Fax: (505) 476-3462

State of New Mexico  
Energy, Minerals & Natural Resources Department  
**OIL CONSERVATION DIVISION**  
11885 SOUTH ST. FRANCIS DR.  
Santa Fe, New Mexico 87505

Form C-102  
Revised August 1, 2011  
Submit one copy to appropriate

OCT 27 2014

☐ AMENDED REPORT

WELL LOCATION AND ACREAGE DEDICATION PLAT

API Number 30-025- <b>42211</b>	Pool Code 41440	Pool Name Lusk; Bone Spring
Property Code <b>308161</b>	Property Name LUSK DEEP UNIT A	Well Number 35H
OGRID No. 229137	Operator Name COG OPERATING, LLC	Elevation 3590.9

Surface Location

UL or lot No.	Section	Township	Range	Lot Idn	Feet from the	North/South line	Feet from the	East/West line	County
H	20	19-S	32-E		1980	NORTH	190	EAST	LEA

Bottom Hole Location If Different From Surface

UL or lot No.	Section	Township	Range	Lot Idn	Feet from the	North/South line	Feet from the	East/West line	County
E	20	19-S	32-E		1980	NORTH	330	WEST	LEA

Dedicated Acres	Joint or Infill	Consolidation Code	Order No.
160			

NO ALLOWABLE WILL BE ASSIGNED TO THIS COMPLETION UNTIL ALL INTERESTS HAVE BEEN CONSOLIDATED  
OR A NON-STANDARD UNIT HAS BEEN APPROVED BY THE DIVISION

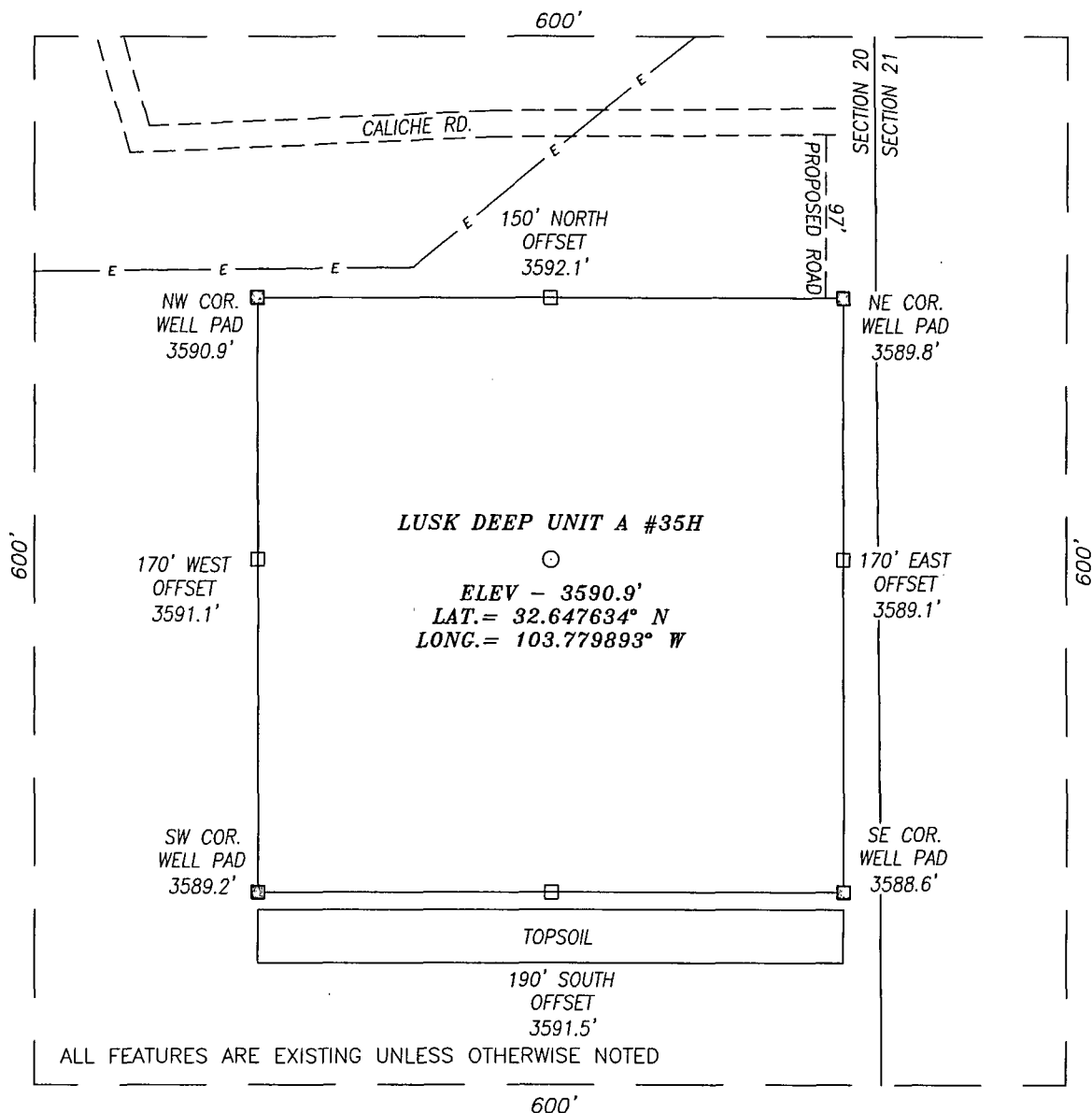
				<b>OPERATOR CERTIFICATION</b> I hereby certify that the information herein is true and complete to the best of my knowledge and belief, and that this organization either owns a working interest or unleased mineral interest in the land including the proposed bottom hole location or has a right to drill this well at this location pursuant to a contract with an owner of such mineral or working interest, or to a voluntary pooling agreement or a compulsory pooling order heretofore entered by the division. <i>Melanie J Parker</i> 5/19/14 Signature Date Melanie J Parker Printed Name mparker@concho.com E-mail Address	
<b>SURVEYOR CERTIFICATION</b> I hereby certify that the well location shown on this plat was plotted from field notes of actual surveys made by me or under my supervision, and that the same is true and correct to the best of my belief. JUNE 11, 2013 Date of Survey Signature & Seal of Professional Surveyor  Certificate No. CHAD HARCROW 17777 W.O. # 13-357 DRAWN BY: VD					

OCT 28 2014

# SECTION 20, TOWNSHIP 19 SOUTH, RANGE 32 EAST, N.M.P.M.,

LEA COUNTY

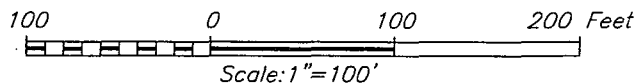
NEW MEXICO



ALL FEATURES ARE EXISTING UNLESS OTHERWISE NOTED

## DIRECTIONS TO LOCATION

FROM THE INTERSECTION OF DRY LAKE RD AND CR #126A (MALJAMAR RD) GO EAST ALONG CALICHE RD FOR APPROX. 0.7 MILE; THEN TURN RIGHT (SOUTHEAST) AND GO APPROX. 0.3 MILE; THEN TURN RIGHT (SOUTH) AND GO APPROX. 0.1 MILE TO EXISTING #001 W/W LUSK WEST DELAWARE UNIT WELL PAD CONTINUE SOUTH FOR APPROX. 0.3 MILE; THEN TURN LEFT (EAST) AND GO APPROX. 0.1 MILE AND PROPOSED WELL IS APPROX. 300 FEET SOUTHWEST.



## HARCROW SURVEYING, LLC

1107 WATSON, ARTESIA, N.M. 88210  
PH: (575) 513-2570 FAX: (575) 746-2158  
chad\_harcrow77@yahoo.com



## COG OPERATING, LLC

LUSK DEEP UNIT A #35H WELL  
LOCATED 1980 FEET FROM THE NORTH LINE  
AND 190 FEET FROM THE EAST LINE OF SECTION 20,  
TOWNSHIP 19 SOUTH, RANGE 32 EAST, N.M.P.M.,  
LEA COUNTY, NEW MEXICO

SURVEY DATE: 06/11/2013

PAGE: 1 OF 1

DRAFTING DATE: 06/17/2013

APPROVED BY: CH

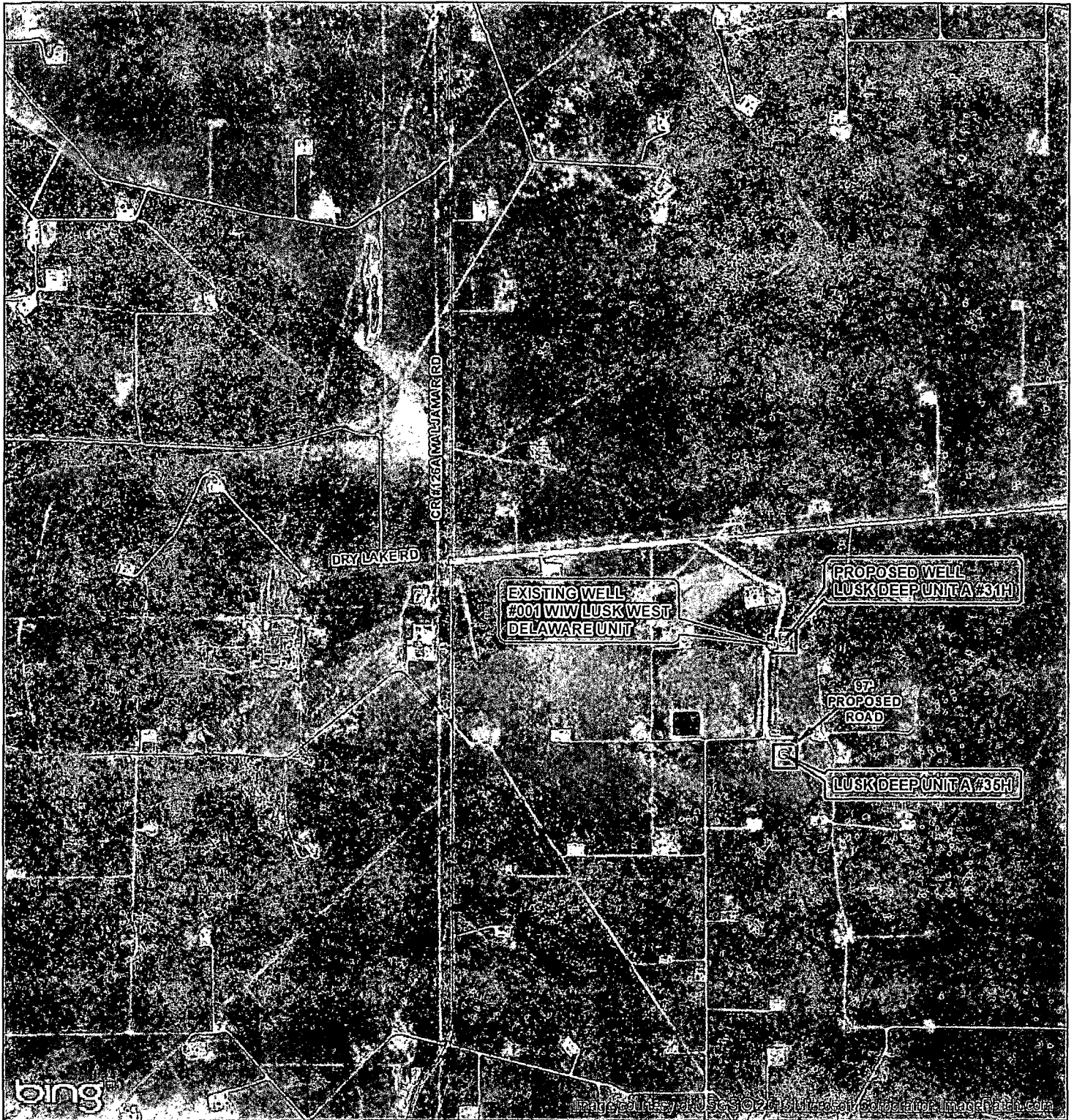
DRAWN BY: VD

FILE: 13-357

## LOCATION VERIFICATION MAP



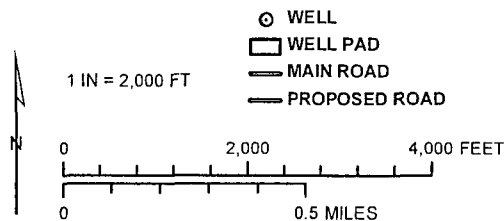
# LOCATION VERIFICATION MAP



SEC. 20, TWP. 19S, RGE. 32E  
 SURVEY: N.M.P.M  
 COUNTY: LEA STATE: NEW MEXICO  
 DESCRIPTION: LUSK DEEP UNIT A #35H  
 1980' FNL, 190' FEL

ELEVATION: 3590.9'  
 OPERATOR: COG OPERATING LLC  
 LEASE: LUSK DEEP UNIT

W.O. # 13-357

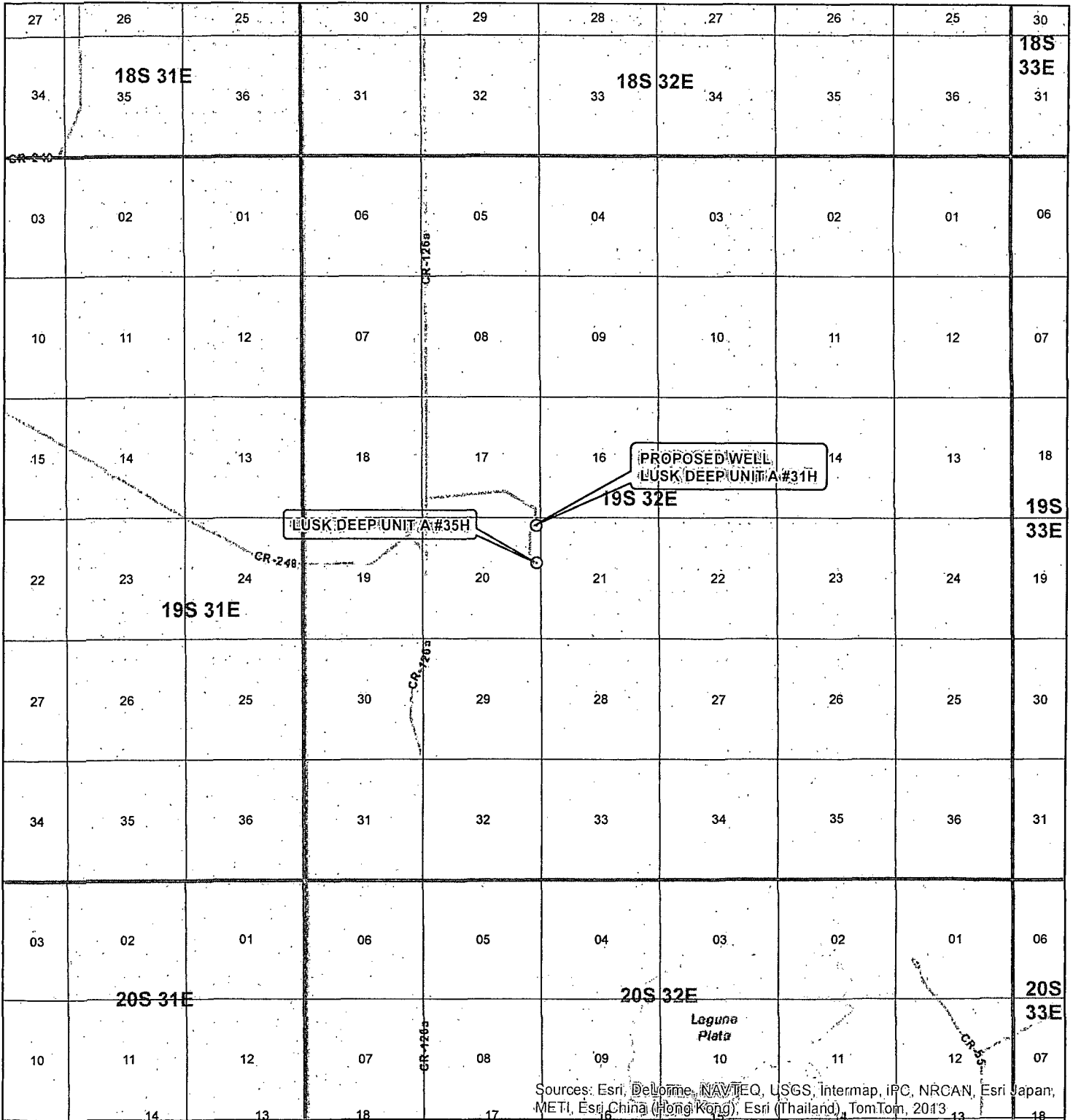


HARCROW SURVEYING, LLC  
 1107 WATSON, ARTESIA N.M. 88210  
 PH: (575) 513-2570 FAX: (575) 746-2158  
 chad\_harcrow77@yahoo.com



MAP DATE: 6/21/2013

# VICINITY MAP



Sources: Esri, DeLorme, NAVTEQ, USGS, Intermap, iPC, NRCAN, Esri Japan, METI, Esri China (Hong Kong), Esri (Thailand), TomTom, 2013

SEC. 20, TWP. 19S, RGE. 32E  
 SURVEY: N.M.P.M  
 COUNTY: LEA STATE: NEW MEXICO  
 DESCRIPTION: LUSK DEEP UNIT A #35H  
 1980' FNL, 190' FEL

ELEVATION: 3590.9'  
 OPERATOR: COG OPERATING LLC  
 LEASE: LUSK DEEP UNIT

W.O. # 13-357



1 IN = 6,000 FT

0 0.5 MILES

○ WELL  
 □ TOWNSHIP  
 □ SECTION

HARCROW SURVEYING, LLC  
 1107 WATSON, ARTESIA N.M. 88210  
 PH: (575) 513-2570 FAX: (575) 746-2158  
 chad\_harcrow77@yahoo.com



MAP DATE: 6/21/2013