

## ARTESIA DISTRICT

**FORM C-102**

State of New Mexico

Energy, Minerals &amp; Natural Resources 06

OCT 09 2014

Revised August 1, 2011

**Submit one copy to appropriate**

District Office

Department

OIL CONSERVATION DIVISION RECEIVED

1220 South St. Francis Dr.

Sante Fe, NM 87505

☐ **AMENDED REPORT**

**District I**  
1625 N. French Dr., Hobbs, NM 88240  
Phone: (575) 393-6161 Fax: (575) 393-0720

**District II**  
811 S. First St., Artesia, NM 88210  
Phone: (575) 748-1283 Fax: (575) 748-9720

**District III**  
1000 Rio Brazos Road, Aztec, NM 87410  
Phone: (505) 334-6178 Fax: (505) 334-6170

**District IV**  
1220 S. St. Francis Dr., Santa Fe, NM 87505  
Phone: (505) 746-3460 Fax: (505) 746-3462

**HOBBS OCD**

OCT 24 2014

**RECEIVED**

## WELL LOCATION AND ACREAGE DEDICATION PLAT

<sup>1</sup> API Number 30-025- 41815	<sup>2</sup> Pool Code <del>7289</del> 1280	<sup>3</sup> Pool Name Bradley; Bone Spring
<sup>4</sup> Property Code 39814	<sup>5</sup> Property Name OPHELIA 27	<sup>6</sup> Well Number 602H
<sup>7</sup> OGRID No. 7377	<sup>8</sup> Operator Name EOG RESOURCES, INC.	<sup>9</sup> Elevation 3293'

## <sup>10</sup>Surface Location

UL or lot no.	Section	Township	Range	Lot Idn	Feet from the	North/South line	Feet from the	East/West line	County
H	27	26-S	33-E	-	2420'	NORTH	917'	EAST	LEA

UL or lot no.	Section	Township	Range	Lot Idn	Feet from the	North/South line	Feet from the	East/West line	County
I	22	26-S	33-E	-	2408	SOUTH	736 29	EAST	LEA

<sup>12</sup> Dedicated Acres 160	<sup>13</sup> Joint or Infill	<sup>14</sup> Consolidation Code	<sup>15</sup> Order No.
--------------------------------------	-------------------------------	----------------------------------	-------------------------

No allowable will be assigned to this completion until all interests have been consolidated or a non-standard unit has been approved by the division.

16				<p><b>17 OPERATOR CERTIFICATION</b></p> <p>I hereby certify that the information contained herein is true and complete to the best of my knowledge and belief, and that this organization either owns a working interest or unleased mineral interest in the land including the proposed bottom hole location or has a right to drill this well at this location pursuant to a contract with an owner of such a mineral or working interest, or to a voluntary pooling agreement or a compulsory pooling order heretofore entered by the division.</p> <p>Signature: <u>Stan Wagner</u> Date: <u>5/8/14</u></p> <p>Printed Name: <u>Stan Wagner</u></p> <p>E-mail Address: _____</p>
22				<p><b>18 SURVEYOR CERTIFICATION</b></p> <p>I hereby certify that the well location shown on the plat was plotted from field notes of actual surveys made by me or under my supervision, and that the same is true to the best of my belief.</p> <p>Date of Survey: <u>8/29/2013</u></p> <p>Signature of Professional Surveyor: <u>Michael B. Brown</u></p> <p>Certificate Number: <u>18329</u></p>
27				

**BOTTOM HOLE LOCATION**  
 NEW MEXICO EAST  
 NAD 1927  
 X=741711  
 Y=374526  
 LAT.: N 32.0272886  
 LONG.: W 103.5533853

**LOWER MOST PERF.**  
 NEW MEXICO EAST  
 NAD 1927  
 X=741712  
 Y=374426  
 LAT.: N 32.0270136  
 LONG.: W 103.5533852

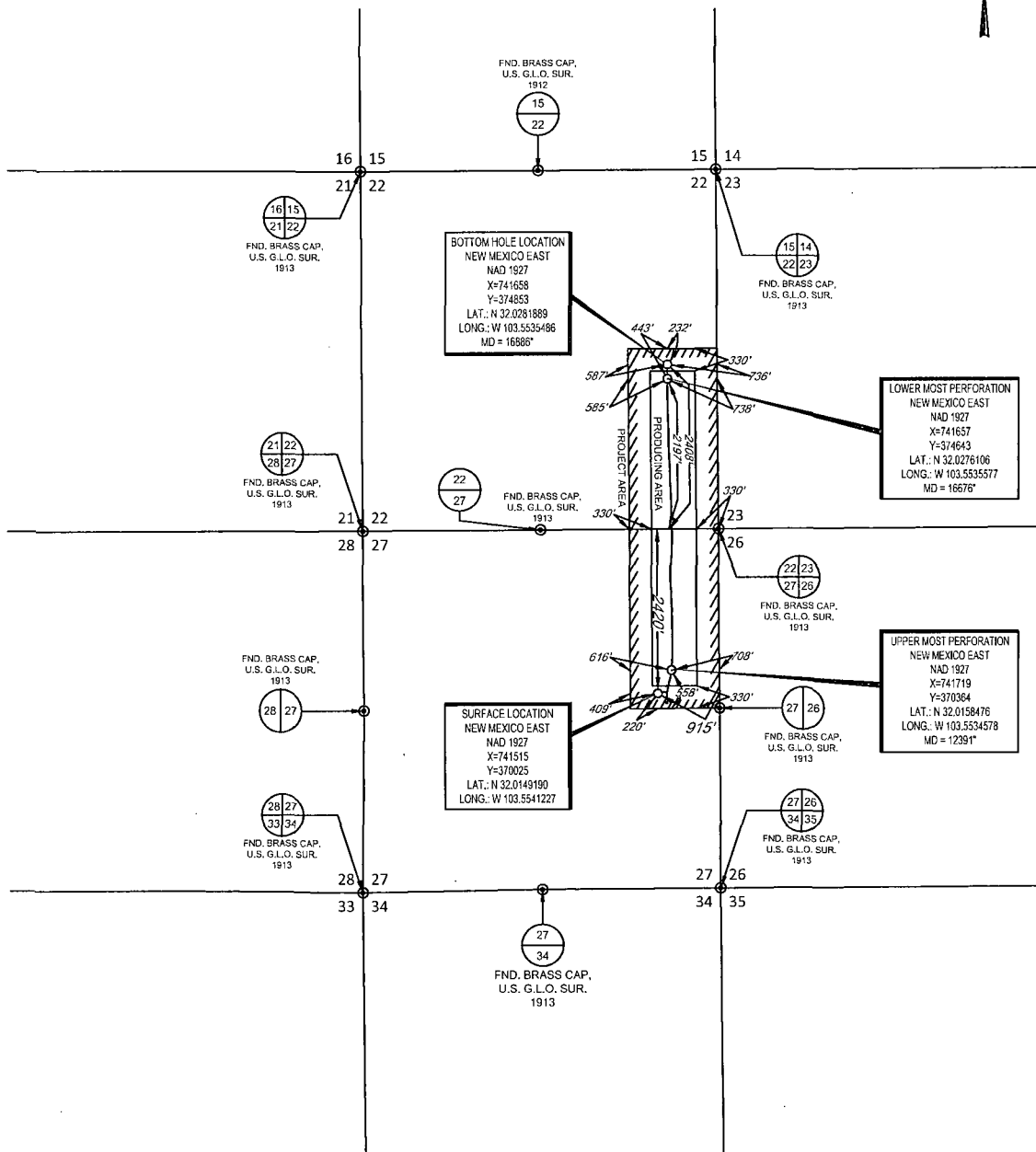
**UPPER MOST PERF.**  
 NEW MEXICO EAST  
 NAD 1927  
 X=741742  
 Y=370466  
 LAT.: N 32.0161281  
 LONG.: W 103.5533818

**SURFACE LOCATION**  
 NEW MEXICO EAST  
 NAD 1927  
 X=741515  
 Y=370025  
 LAT.: N 32.0149189  
 LONG.: W 103.5541226

NOV 01 2014

SCALE: 1" = 2000'  
0' 1000' 2000'

SECTION 27, TOWNSHIP 26 SOUTH, RANGE 33 EAST, N.M.P.M.  
LEA COUNTY, NEW MEXICO



LEASE NAME & WELL NO.: OPHELIA 27 #602H  
SECTION 27 TWP 26-S RGE 33-E SURVEY N.M.P.M.  
COUNTY LEA STATE NM ELEVATION 3307'  
DESCRIPTION 2420' FNL & 915' FEL

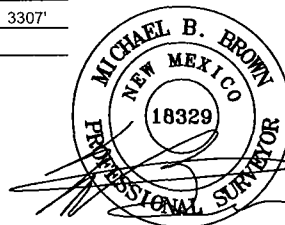


**TOPOGRAPHIC**  
LOYALTY INNOVATION LEGACY

1400 EVERMAN PARKWAY, Ste. 197 • FT. WORTH, TEXAS 76140  
TELEPHONE: (817) 744-7512 • FAX (817) 744-7548  
2903 NORTH BIG SPRING • MIDLAND, TEXAS 79705  
TELEPHONE: (432) 862-1653 OR (800) 761-1653 • FAX (432) 862-1743  
WWW.TOPOGRAPHIC.COM



**eog resources, Inc.**



Michael Blake Brown, P. S. No. 18329  
AUGUST 14, 2014

OPHELIA 27 #602H AS-COMPLETED	REVISION:	
	INT	DATE
DATE: 08/14/14		
FILE: AD_OPHELIA27_602H		
DRAWN BY: G.O.		
SHEET: 1 OF 1		

- NOTES:
1. ORIGINAL DOCUMENT SIZE: 8.5" X 11"
  2. ALL BEARINGS, DISTANCES, AND COORDINATE VALUES CONTAINED HEREIN ARE GRID BASED UPON THE NEW MEXICO STATE PLANE COORDINATE SYSTEM, EAST ZONE, U.S. SURVEY FEET, NORTH AMERICAN DATUM 1927.
  3. CERTIFICATION IS MADE ONLY TO THE LOCATION OF THIS EASEMENT, IN RELATION TO THE EVIDENCE FOUND DURING A FIELD SURVEY, MADE ON THE GROUND, UNDER MY SUPERVISION, AND USING DOCUMENTATION PROVIDED BY EOG RESOURCES, INC. ONLY UTILITIES/EASEMENTS THAT WERE VISIBLE ON THE DATE OF THIS SURVEY, WITHIN/ADJOINING THIS EASEMENT, HAVE BEEN LOCATED AS SHOWN HEREON OF WHICH I HAVE KNOWLEDGE. THIS CERTIFICATION IS LIMITED TO THOSE PERSONS OR ENTITIES SHOWN ON THE FACE OF THIS PLAT AND IS NON-TRANSFERABLE, AND MADE FOR THIS TRANSACTION ONLY.
  4. B.O.L.P. O.B. = BEGINNING OF LINE/POINT OF BEGINNING
  5. E.O.L.P. O.E. = END OF LINE/POINT OF EXIT