

District I

1625 N. French Dr., Hobbs, NM 88240

Phone: (575) 393-6161 Fax: (575) 393-6162

District II

811 S. First St., Artesia, NM 88210

Phone: (575) 748-1283 Fax: (575) 748-0730

District III

1600 Rio Brazos Road, Aztec, NM 87410

Phone: (505) 334-6178 Fax: (505) 334-6170

District IV

1220 S. St. Francis Dr., Santa Fe, NM 87505

Phone: (505) 476-3460 Fax: (505) 476-3462

State of New Mexico

Oil, Gas, Minerals & Natural Resources Department

OIL CONSERVATION DIVISION

1220 South St. Francis Dr.

Santa Fe, NM 87505

Form C-102

Revised August 1, 2011

Submit one copy to appropriate

District Office

☐ AMENDED REPORT

WELL LOCATION AND ACREAGE DEDICATION PLAT

¹ API Number 30-025-43228	² Pool Code 50461	³ Pool Name Quail Ridge Lea Bore Spring South
⁴ Property Code 313633	⁵ Property Name NORTH LEA 3 FED COM	
⁷ OGRID No. 18917	⁸ Operator Name READ & STEVENS, INC.	⁶ Well Number 3H
		⁹ Elevation 3667.7

¹⁰ Surface Location

U1. or lot no.	Section	Township	Range	Lot Idn	Feet from the	North/South line	Feet from the	East/West line	County
3	3	20 S	34 E		200	NORTH	2290	WEST	LEA

¹¹ Bottom Hole Location If Different From Surface

U1. or lot no.	Section	Township	Range	Lot Idn	Feet from the	North/South line	Feet from the	East/West line	County
N	3	20 S	34 E		330	SOUTH	2290	WEST	LEA

¹² Dedicated Acres 160	¹³ Joint or Infill	¹⁴ Consolidation Code	¹⁵ Order No.
---	-------------------------------	----------------------------------	-------------------------

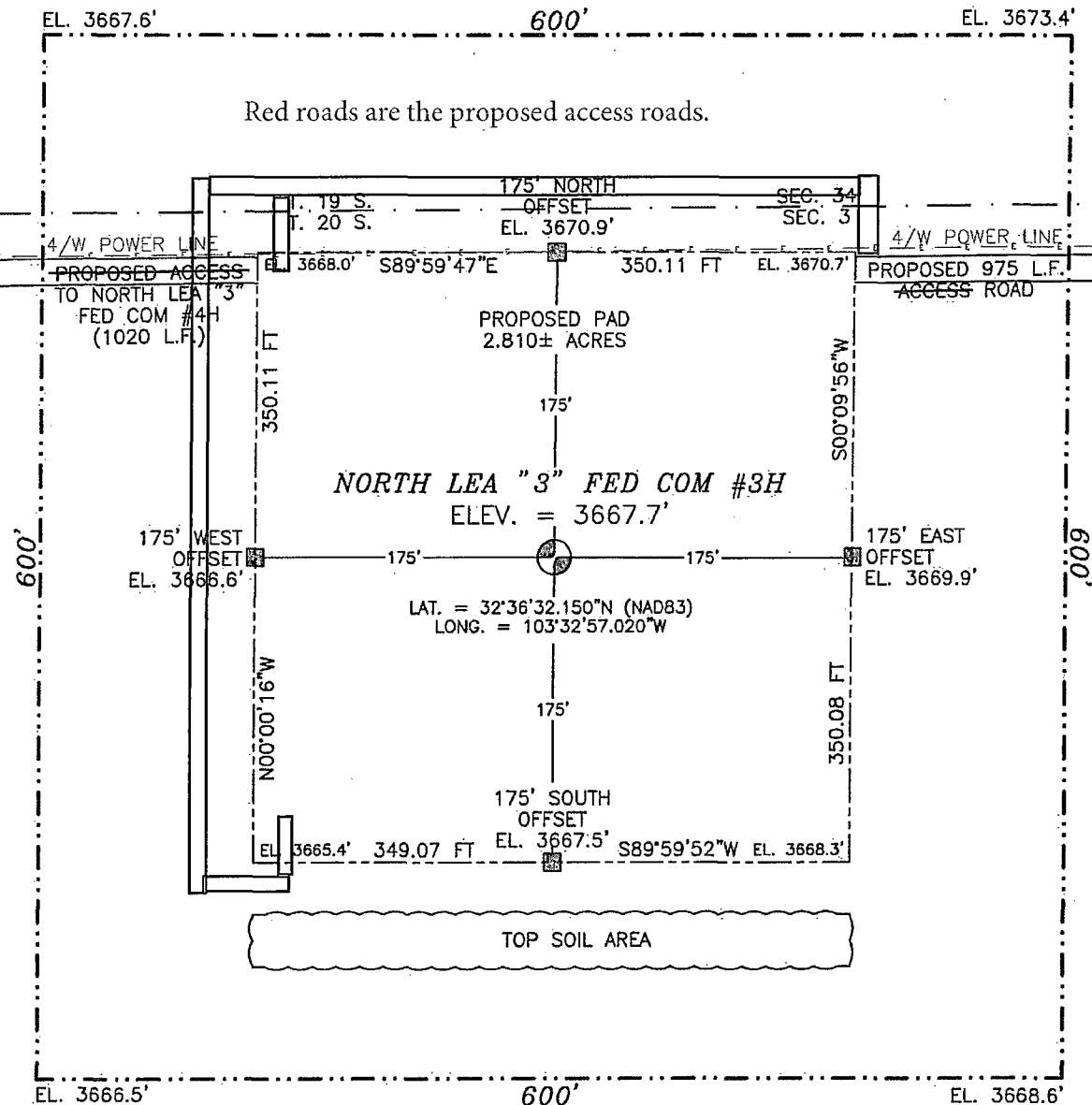
No allowable will be assigned to this completion until all interests have been consolidated or a non-standard unit has been approved by the division. *Green items inserted by direction of operator 7/10/14 e-mail*

<p>N89°29'50"E 2642.95 FT</p> <p>2290'</p> <p>SURFACE LOCATION</p> <p>200'</p> <p>NW CORNER SEC. 3 LAT. = 32°36'34.097"N LONG. = 103°33'23.785"W</p> <p>40.30 AC. (40.85 AC. BLM)</p> <p>L4</p> <p>L3</p> <p>L2</p> <p>L1</p> <p>W/4 CORNER SEC. 3 LAT. = 32°36'07.810"N LONG. = 103°33'23.804"W</p> <p>NOTE: LATITUDE AND LONGITUDE COORDINATES ARE SHOWN USING THE NORTH AMERICAN DATUM OF 1983 (NAD83) IN DEGREES MINUTES DECIMAL SECONDS FORMAT. BASIS OF BEARING IS NEW MEXICO STATE PLANE EAST (NAD83) COORDINATES MODIFIED TO SURFACE.</p> <p>SW CORNER SEC. 3 LAT. = 32°35'41.520"N LONG. = 103°33'23.804"W</p> <p>2290'</p> <p>BOTTOM OF HOLE</p> <p>330'</p> <p>S/4 CORNER SEC. 3 LAT. = 32°35'41.635"N LONG. = 103°32'53.040"W</p> <p>SE CORNER SEC. 3 LAT. = 32°35'41.724"N LONG. = 103°32'22.156"W</p> <p>S89°19'33"W 2632.55 FT</p> <p>S89°22'54"W 2642.75 FT</p>		<p>N89°25'36"E 2639.86 FT</p> <p>N/4 CORNER SEC. 3 LAT. = 32°36'34.134"N LONG. = 103°32'52.893"W</p> <p>NE CORNER SEC. 3 LAT. = 32°36'34.202"N LONG. = 103°32'22.038"W</p> <p>NORTH LEA "3" FED COM #3H ELEV. = 3667.7' LAT. = 32°36'32.150"N (NAD83) LONG. = 103°32'57.020"W</p> <p>500°19'32"E 2662.21 FT</p> <p>500°18'45"E 2642.45 FT</p>	<p>17 OPERATOR CERTIFICATION</p> <p>I hereby certify that the information contained herein is true and complete to the best of my knowledge and belief, and that this organization either owns a working interest or released mineral interest in the land including the proposed bottom hole location or has a right to drill this well at this location pursuant to a contract with an owner of such a mineral or working interest, or to a voluntary pooling agreement or a compulsory pooling order heretofore entered by the division.</p> <p><i>[Signature]</i> 01/23/2014 Date</p> <p>Rory McMinn Printed Name</p> <p>rmcminn@read-stevens.com E-mail Address</p> <p>18 SURVEYOR CERTIFICATION</p> <p>I hereby certify that the well location shown on this plat was plotted from field notes of actual surveys made by me or under my supervision, and that the same is true and correct to the best of my belief.</p> <p>AUGUST 28, 2014 Date of Survey</p> <p><i>[Signature]</i> Signature and Seal of Professional Surveyor</p> <p>Certificate Number: 12797 FERNANDO J. JARAMILLO, PLS 12797 SURVEY NO. 1892</p>
---	--	---	--

NOV 04 2014

SECTION 3, TOWNSHIP 20 SOUTH, RANGE 34 EAST, N.M.P.M.
LEA COUNTY, STATE OF NEW MEXICO

NOTE: LATITUDE AND LONGITUDE COORDINATES ARE SHOWN USING THE NORTH AMERICAN DATUM OF 1983 (NAD83) IN DEGREES, MINUTES AND DECIMAL SECONDS FORMAT. BASIS OF BEARING IS NEW MEXICO STATE PLANE EAST (NAD83) COORDINATES MODIFIED TO SURFACE.



010 50 100 200

SCALE 1" = 100'

DIRECTIONS TO LOCATION

FROM MILE MARKER #79 ON HWY 62-180 GO EAST ON HWY 62-180 APPROX. 0.7 MILES TO A LEASE ROAD ON RIGHT (SOUTH) TURN SOUTH ON LEASE ROAD GO APPROX. 0.7 MILES ROAD TURNS RIGHT (WEST) GO WEST APPROX. 0.2 MILES TO LEASE ROAD ON LEFT (SOUTH) TURN SOUTH GO APPROX. 0.1 MILES TO A ROAD LATH ON RIGHT (WEST) FOLLOW ROAD LATHS WEST APPROX. 0.2 MILES TO LOCATION.

READ & STEVENS, INC.
NORTH LEA "3" FED COM #3H
LOCATED 200 FT. FROM THE NORTH LINE
AND 2290 FT. FROM THE WEST LINE OF
SECTION 3, TOWNSHIP 20 SOUTH,
RANGE 34 EAST, N.M.P.M.
LEA COUNTY, STATE OF NEW MEXICO

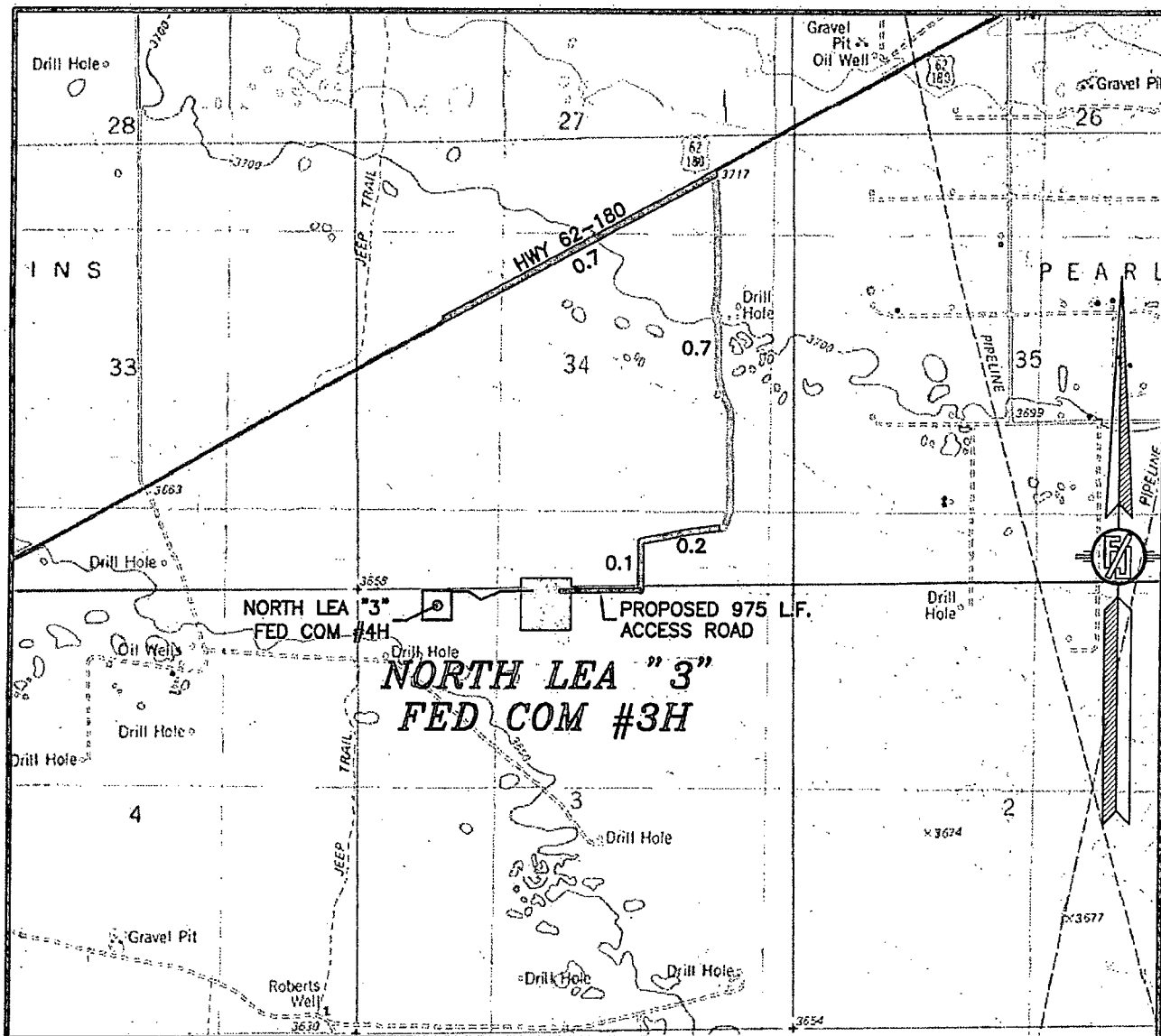
AUGUST 28, 2013

SURVEY NO. 1892

MADRON SURVEYING, INC. 301 SOUTH CANAL (575) 234-3341

CARLSBAD, NEW MEXICO

SECTION 3, TOWNSHIP 20 SOUTH, RANGE 34 EAST, N.M.P.M.
LEA COUNTY, STATE OF NEW MEXICO
LOCATION VERIFICATION MAP



USGS QUAD MAP:
LEA

DISTANCES IN MILES

NOT TO SCALE

DIRECTIONS TO LOCATION

FROM MILE MARKER #79 ON HWY 62-180 GO EAST ON HWY 62-180 APPROX. 0.7 MILES TO A LEASE ROAD ON RIGHT (SOUTH) TURN SOUTH ON LEASE ROAD GO APPROX. 0.7 MILES ROAD TURNS RIGHT (WEST) GO WEST APPROX. 0.2 MILES TO LEASE ROAD ON LEFT (SOUTH) TURN SOUTH GO APPROX. 0.1 MILES TO A ROAD LATH ON RIGHT (WEST) FOLLOW ROAD LATHS WEST APPROX. 0.2 MILES TO LOCATION.

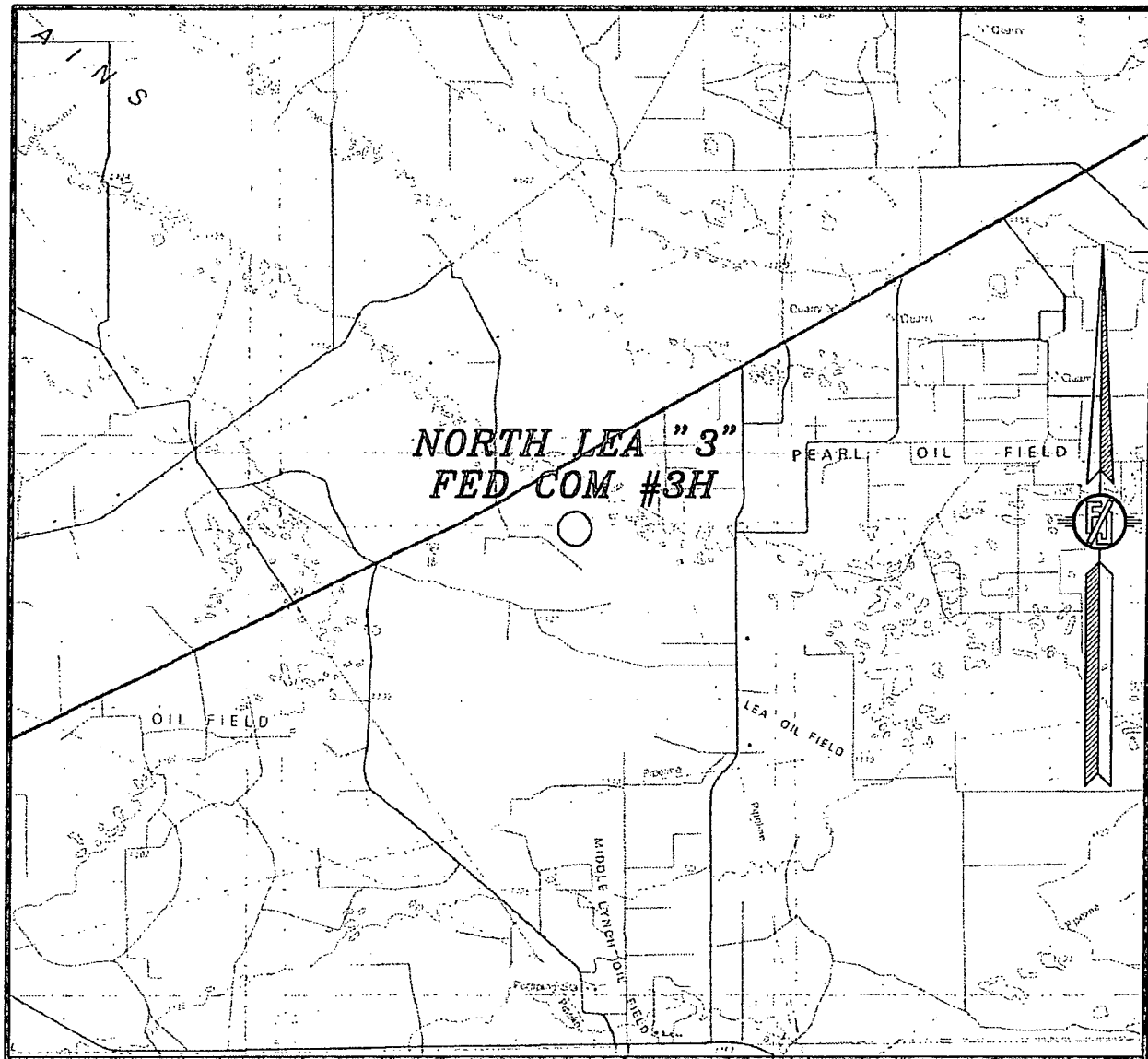
READ & STEVENS, INC.
NORTH LEA "3" FED COM #3H
LOCATED 200 FT. FROM THE NORTH LINE
AND 2290 FT. FROM THE WEST LINE OF
SECTION 3, TOWNSHIP 20 SOUTH,
RANGE 34 EAST, N.M.P.M.
LEA COUNTY, STATE OF NEW MEXICO

AUGUST 28, 2013

MADRON SURVEYING, INC. 301 SOUTH CANAL
(575) 234-3341

SURVEY NO. 1892
CARLSBAD, NEW MEXICO

SECTION 3, TOWNSHIP 20 SOUTH, RANGE 34 EAST, N.M.P.M.
LEA COUNTY, STATE OF NEW MEXICO
VICINITY MAP



NOT TO SCALE

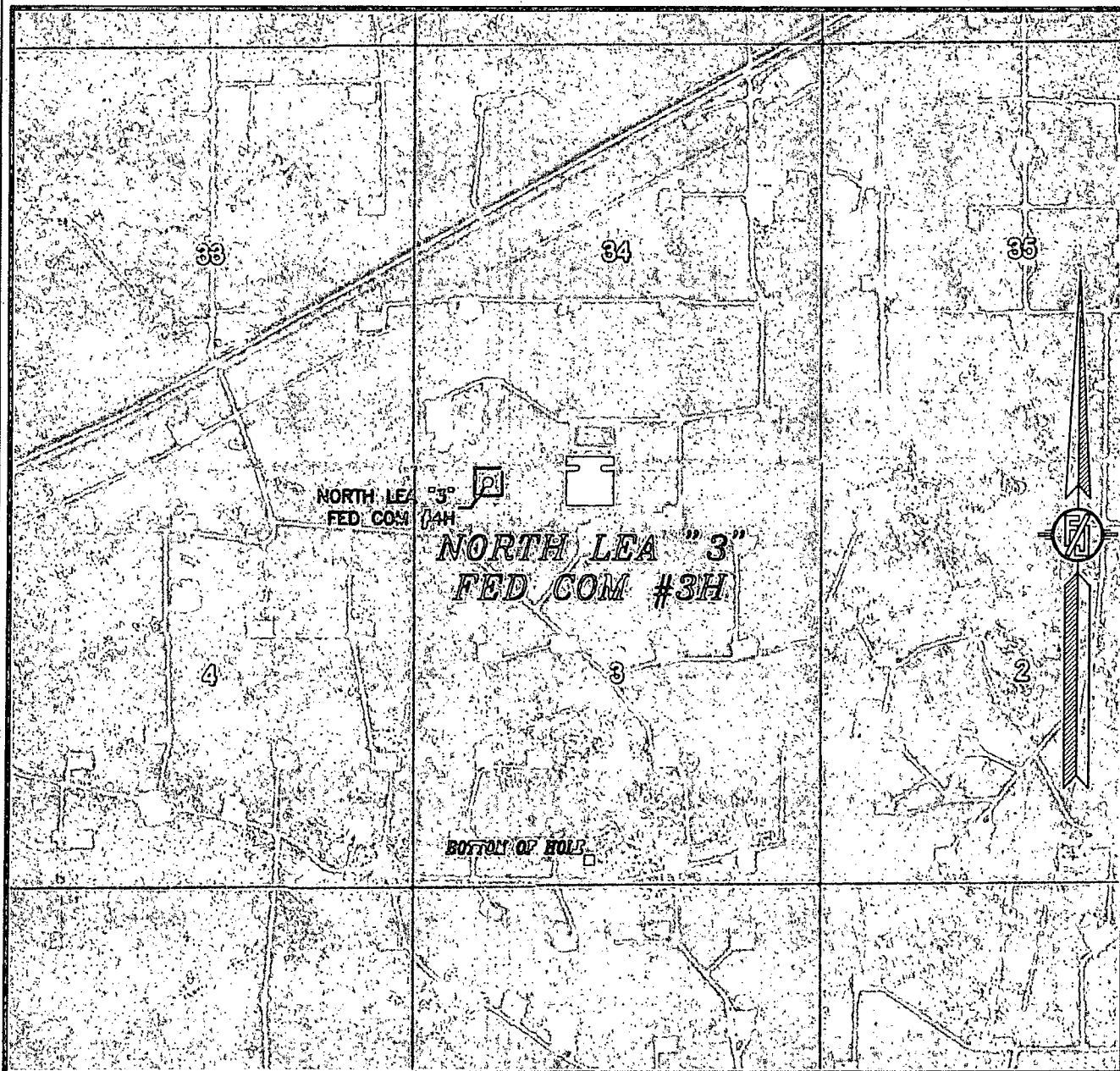
READ & STEVENS, INC.
NORTH LEA "3" FED COM #3H
LOCATED 200 FT. FROM THE NORTH LINE
AND 2290 FT. FROM THE WEST LINE OF
SECTION 3, TOWNSHIP 20 SOUTH,
RANGE 34 EAST, N.M.P.M.
LEA COUNTY, STATE OF NEW MEXICO

AUGUST 28, 2013

SURVEY NO. 1892

MADRON SURVEYING, INC. 301 SOUTH CANAL (575) 234-3341 CARLSBAD, NEW MEXICO

SECTION 3, TOWNSHIP 20 SOUTH, RANGE 34 EAST, N.M.P.M.
LEA COUNTY, STATE OF NEW MEXICO
AERIAL PHOTO



NOT TO SCALE
AERIAL PHOTO:
GOOGLE EARTH
MARCH 2012

READ & STEVENS, INC.
NORTH LEA "3" FED COM #3H
LOCATED 200 FT. FROM THE NORTH LINE
AND 2290 FT. FROM THE WEST LINE OF
SECTION 3, TOWNSHIP 20 SOUTH,
RANGE 34 EAST, N.M.P.M.
LEA COUNTY, STATE OF NEW MEXICO

AUGUST 28, 2013

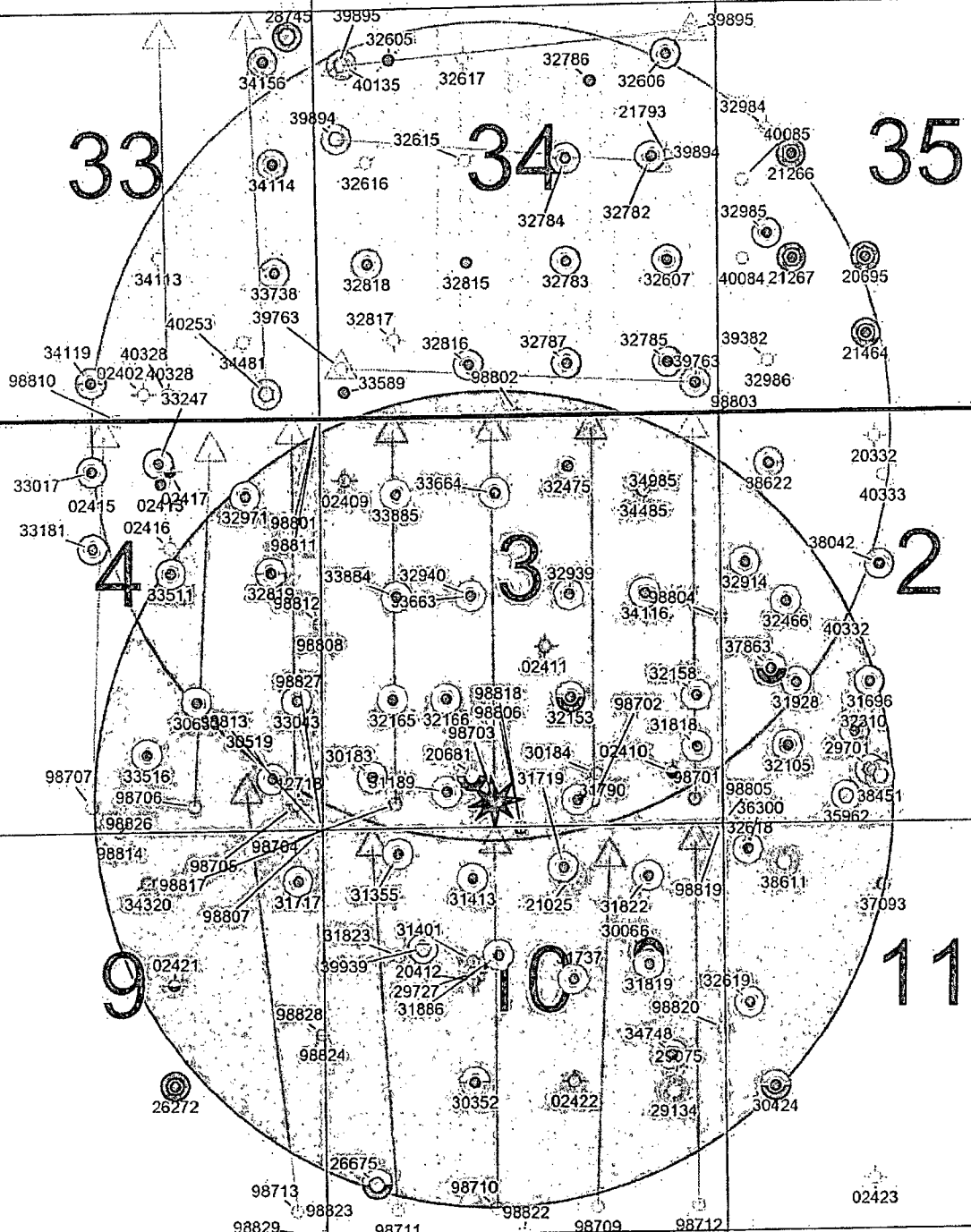
SURVEY NO. 1892

MADRON SURVEYING, INC. 301 SOUTH CANAL (575) 234-3341 CARLSBAD, NEW MEXICO

1-MILE RADIUS MAP

blue circle = surface hole
green circle = bottom hole

37615



- PERM
- QUEN
- BOUGH
- DLWR
- SADR
- YATES
- ABO
- BSPG
- WFMF
- PSVL
- CISCO
- CNYN
- STRN
- ATOK
- MRRW
- MSSP
- WDFD
- DVNN
- CLDN

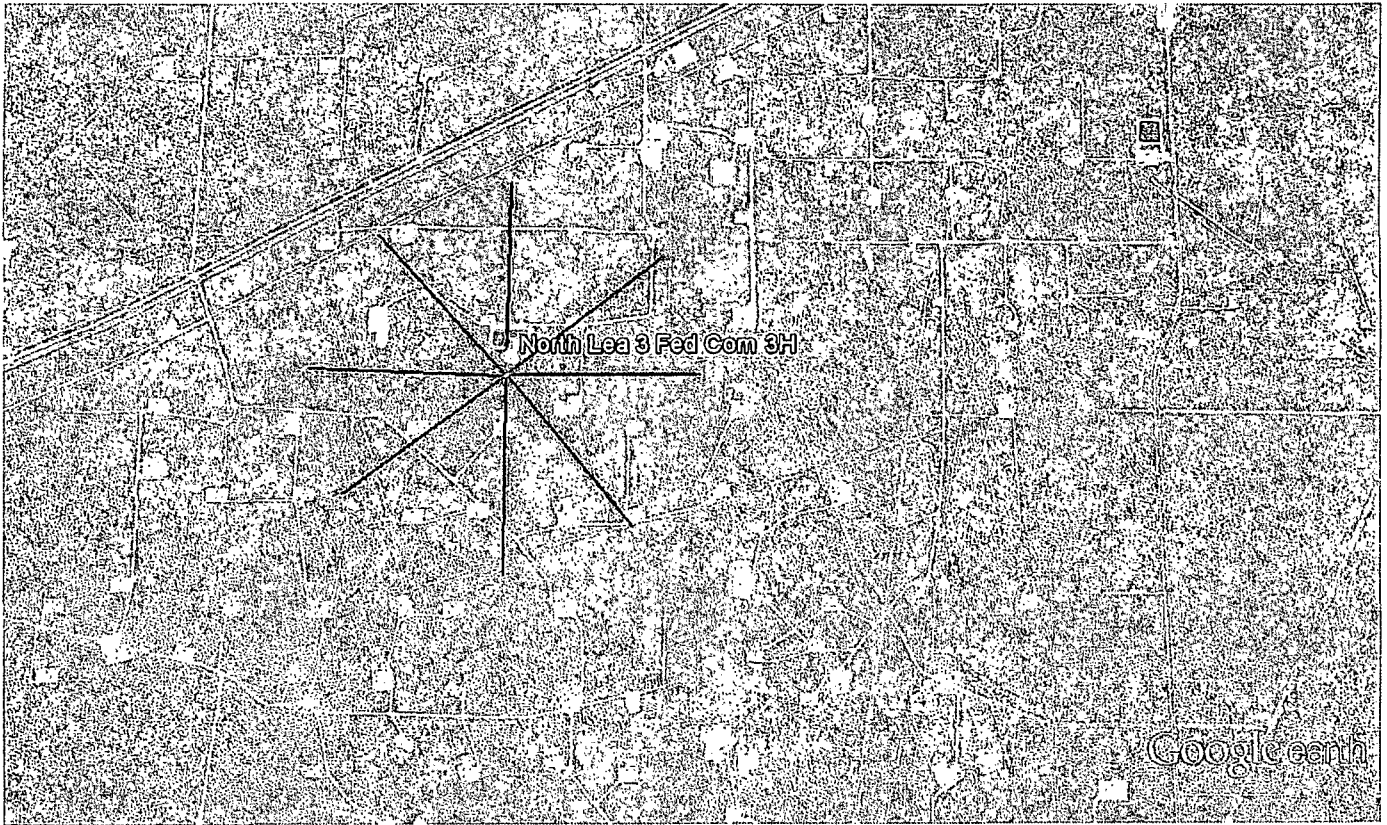
40531

North Lea 3 Fed Com #3H

16 15 14
20S 34E

state code = 30
county code = 025

20386



Google earth

miles
km

1

3



**Read and Stevens, Inc.
Drilling Prognosis
North Lea 3 Fed Com #3H**

Revision date: March 25, 2014

Surface Location: 586,150.20usft N, 782,801.05usft E
200' FNL, 2290' FWL

Section 3, T-20-S, R-34-E
Lea County, New Mexico

Bottom Hole: 581,370.62usft N, 782,832.62usft E
330' FSL, 2290' FWL

Section 3, T-20-S, R-34-E
Lea County, New Mexico

Planned Total Depth: 10,923' TVD /15,408' MD

RKB: 3689.7' GL: 3667.7'

Preparer: Steve Morris